

GOVERNMENT OF INDIA

DEPARTMENT OF ARCHAEOLOGY

**CENTRAL ARCHAEOLOGICAL  
LIBRARY**

Acc. 21797

CALL No. **R913.02** **I.D.A.-Ann**

D.G A. 79.

915.05 1847













APPENDIX III

TO THE

ANNUAL REPORT

OF THE

ARCHÆOLOGICAL SURVEY OF INDIA

1930-31



CALCUTTA  
GOVERNMENT OF INDIA PRESS  
1933

D 169(a)

GOVERNMENT OF INDIA  
DEPARTMENT OF ARCHAEOLOGY  
CENTRAL ARCHAEOLOGICAL  
LIBRARY

---

CLASS \_\_\_\_\_

CALL No. D169 (a) \_\_\_\_\_

D.G.A. 79.

APPENDIX III  
TO THE  
ANNUAL REPORT  
OF THE  
ARCHÆOLOGICAL SURVEY OF INDIA

1930-31



R. 913.02  
I.D.A./Ann

21797

CALCUTTA  
GOVERNMENT OF INDIA PRESS  
1933



ANNUAL REPORT  
OF THE  
ARCHAEOLOGICAL SURVEY OF INDIA

D. 1924

1930-31

MAHARAJA

---

### APPENDIX III.

Statement showing Budget grants and expenditure of the Archæological Department  
for the year 1930-31.

---

CENTRAL ARCHAEOLOGICAL  
LIBRARY, NEW DELHI.

Acc. No. 21797

Date 20.10.55

Call No. R 913.02 / I.D.A. / Arn

## Statement showing Budget grants and expenditure of the

	A. PAY OF OFFICERS.		B. Pay of Estab- lishment.	C. ALLOWANCES, HONORARIA, ETC.		D. CONSERVATION OF ANCIENT MONUMENTS.		
	Non-voted.	Voted.		Non-voted.	Voted.	Special Repairs.	Annual Repairs.	Grants in aid.
Original Budget grant . . . .	44,900	1,96,900	2,26,900	9,400	83,400	3,18,300	3,75,000	14,500
Net Budget grant as subsequently modi- fied.	45,566	1,92,291	2,25,900	5,949	83,747	3,06,427	3,65,783	14,500
<i>Expenditure.</i>								
Director General of Archaeology . .	15,921	32,496	55,757	836	13,744	656	2,789	9,186
Northern Circle, Agra . . . .	..	20,157	28,366	..	11,217	63,753	1,63,431	..
Northern Circle, Lahore . . . .	..	7,398	9,635	..	6,050	1,519	6,863	..
Frontier Circle, Lahore . . . .	14,974	6,367	23,800	1,241	6,118	58,923	47,578	..
Western Circle, Poona . . . .	..	15,593	14,881	..	10,036	98,335	50,273	..
Central Circle, Patna . . . .	..	12,701	9,261	..	6,176	36,443	17,225	..
Eastern Circle, Calcutta . . . .	..	8,919	10,829	..	6,189	29,110	15,434	..
Southern Circle, Kotagiri Nūgiris. .	14,400	..	7,541	2,718	1,145	7,856	21,750	..
Burma Circle, Mandalay . . . .	..	21,000	10,595	..	5,636	13,815	30,364	..
Government Epigraphist, Ootacamund.	..	32,773	8,768	..	3,255	..	..	..
Assistant Superintendent of Archaeology for Epigraphy, Madras.	..	3,652	14,243	..	1,995	..	..	..
Archaeological Chemist, Dehra Dun .	..	11,982	2,950	..	2,345	..	..	..
Indian Museum Archaeological Section, Calcutta.	..	10,065	12,879	..	5,816	..	..	..
Central Asian Antiquities Museum, New Delhi.	..	4,658	3,205	..	154	..	..	..
Delhi Museum of Archaeology . . .	..	..	12,378	..	..	..	..	..
Moslem Epigraphist, Hyderabad . .	..	1,800	..	..	..	..	..	..
GRAND TOTAL . .	45,295	1,89,531	2,25,088	4,795	79,885	3,10,410	3,55,716	9,186



## DIX III.

*Archæological Department for the year 1930-31.*

E. Library and Publications.	F. Archæo- logical Explorations (including pay and allowances).	G. Museums at Taxila, Nalanda and in the U. P.	H. Other Supplies and Services.	I. Contin- gencies.	K. PUBLICATION OF AR- CHÆOLOGICAL MATERIALS		L. Works (construction and petty repairs of civil buildings.)	TOTAL.
					Non-voted.	Voted.		
55,500	2,54,400	9,100	20,600	73,200	15,700	4,200	..	17,03,000
16,947	2,49,458	8,093	18,043	70,857	12,800	4,290	16,520	16,37,081
16,999	1,38,164	..	6,685	10,569	11,902	4,167	3,990	3,23,840
..	4,496	1,126	834	5,040	..	..	1,794	3,00,214
..	23,808	4,408	1,133	6,245	..	..	7,714	74,782
..	14,026	2,427	717	3,008	..	..	939	1,80,168
..	800	..	1,193	4,044	..	..	183	1,95,338
..	23,701	..	1,098	3,970	..	..	600	1,11,175
..	17,558	..	762	3,114	..	..	..	91,915
..	1,339	..	942	3,445	..	..	..	61,145
..	2,457	..	786	3,257	..	..	462	88,372
1,032	..	..	..	5,603	..	..	..	51,431
..	..	..	216	4,299	..	..	..	24,405
..	7,601	..	1,490	2,649	..	..	..	29,017
..	..	..	1,499	5,497	..	..	..	35,756
..	..	..	..	4,245	..	..	1,315	13,577
..	..	..	..	2,516	..	..	..	14,894
..	..	..	..	..	..	..	..	1,800
18,031	2,33,950	7,961	17,355	67,501	11,902	4,167	17,056	15,97,820

## APPENDIX III—contd.

(a) EXPENDITURE ON ESTABLISHMENT, ETC., EXCLUDING CONSERVATION

*Director General of Archaeology in India.*

Budget heads.	Original Budget allotment for the year 1930-31.	Total allotment as subsequently modified.	Expenditure.
	Rs.	Rs.	Rs.
<b>A. Pay of Officers—</b>			
Non-voted . . . . .	15,600	15,600	15,921
Voted . . . . .	30,950	35,251	32,466
<b>B. Pay of Establishment . . . . .</b>	<b>54,980</b>	<b>55,580</b>	<b>55,757</b>
<b>C. Allowances, Honoraria, etc.—</b>			
Non-voted.			
(i) Payment on account of medical treatment of British Officers of the superior Civil Services.	300	113	..
(ii) Travelling allowance of Officers . . . . .	1,500	1,000	836
Voted.			
(i) House rent and other allowances . . . . .	3,190	3,750	3,903
(ii) Winter allowances . . . . .	500	500	345
(iii) Travelling allowance of Officers. . . . .	4,000	4,472	4,411
(iv) Travelling allowance of Establishment . . . . .	6,040	5,044	5,043
(v) Compensation for dearness of provisions . . . . .	50	20	2
(vi) Payment on account of medical treatment of British Officers of the Superior Civil Services.	200	159	..
(vii) Cost of passages granted under the Superior Civil Services Rules, 1924.	..	41	40
<b>E. Library and Publications—</b>			
Gross charges . . . . .	75,000	16,064	17,548
Deduct Recoveries . . . . .	—23,500	—853	—549
<b>F. Archaeological, Explorations—</b>			
(1) Pay of Officers (Voted) . . . . .	27,881	27,881	25,889
(2) Pay of Establishment . . . . .	11,892	13,976	13,814
(3) Allowances, Honoraria, etc.—			
Voted.			
(i) Cost of passages granted under the Superior Civil Services Rules, 1924.	4,000	4,000	..
(ii) Travelling allowance of Officers . . . . .	6,500	6,500	6,978
(iii) Travelling allowance of Establishment . . . . .	3,800	3,800	3,790
(iv) House rent and other allowances . . . . .	700	300	276
(4) Supplies and Services—			
(i) Purchase of photographs and photo-materials . . . . .	2,000	1,500	1,300
(ii) Archaeological scholarships . . . . .	4,100	1,523	1,505
(iii) Excavations at Mohenjodaro (Sindh) . . . . .	60,000	65,000	64,997
(iv) Excavations at Taxila (Punjab) . . . . .	16,000	16,000	16,000
(5) Contingencies. . . . .	3,500	3,600	3,715
<b>H. Other Supplies and Services—</b>			
(i) Purchase and acquisitions of antiquities . . . . .	6,100	3,777	3,777
(ii) Purchase of photographs and photo-materials . . . . .	1,900	1,665	1,682
(iii) Archaeological scholarships . . . . .	1,200	1,226	1,226
Carried over . . . . .	3,27,383	2,87,480	2,80,572



APPENDIX III—*contd.*(a) EXPENDITURE ON ESTABLISHMENT, ETC., EXCLUDING CONSERVATION—*contd.**Director General of Archaeology in India—contd.*

Budget heads.	Original Budget allotment for the year 1930-31.	Total allotment as subsequently modified.	Expenditure.
	Rs.	Rs.	Rs.
Brought forward . . . . .	3,27,383	2,87,489	2,80,572
I. Contingencies . . . . .	12,020	10,734	10,569
K. Publication of Archaeological Materials—			
(1) Pay of Officers (Non-voted) . . . . .	11,500	10,500	10,486
(2) Pay of Establishment . . . . .	2,200	2,204	2,204
(3) Allowances, Honoraria, etc.—			
<i>Non-voted.</i>			
(i) Cost of passages granted under the Superior Civil Services Rules, 1924. . . . .	1,000	..	..
(ii) Payment on account of medical treatment of British Officers of the Superior Civil Services. . . . .	200	200	..
(iii) Travelling allowance of Officers . . . . .	3,000	2,100	1,416
<i>Voted.</i>			
(i) Travelling allowance of Establishment . . . . .	1,400	900	888
(ii) Compensation for dearness of provisions . . . . .	100	100	5
(4) Contingencies . . . . .	500	1,090	1,600
L. Works . . . . .	..	4,003	3,999
TOTAL . . . . .	3,59,303	3,19,329	3,11,209

*Northern Circle, Muhammadan and British Monuments, Agra.*

Budget heads.	Original Budget allotment for the year 1930-31.	Total allotment as subsequently modified.	Expenditure.
	Rs.	Rs.	Rs.
A. Pay of officers (Voted) . . . . .	20,813	20,813	20,157
B. Pay of Establishment . . . . .	28,475	28,475	28,366
C. Allowances, Honoraria, etc.—			
<i>Voted.</i>			
(i) House rent and other allowances . . . . .	..	521	515
(ii) Travelling allowance of Officers . . . . .	4,000	4,100	4,096
(iii) Travelling allowance of establishment. . . . .	6,140	6,619	6,606
(iv) Compensation for dearness of provisions . . . . .	30	..	..
F. Archaeological Explorations—			
Excavation and clearance of debris at Bijaimandal, Delhi . . . . .	2,000	4,500	4,496
G. Museums and Bungalows in the U. P. and Delhi—			
(1) Taj Museum, Agra . . . . .	250	250	165
(2) Dāk Bungalow at Sikandra . . . . .	250	122	122
(3) Dāk Bungalow at Fatehpur Sikri, District Agra . . . . .	700	828	839
H. Other Supplies and Services—			
(i) Purchase of photographs and photo-materials . . . . .	750	835	834
(ii) Petty supplies and services . . . . .	50	..	..
I. Contingencies . . . . .	5,400	5,200	5,040
L. Works—			
Repairs and Maintenance—			
(1) Office of the Superintendent, Archaeological Survey, Muhammadan and British Monuments, Northern Circle, Agra. . . . .	650	650	644
(2) Archaeological Bungalow at Sikandra . . . . .	200	200	179
(3) Archaeological Dāk Bungalow at Fatehpur Sikri, Agra . . . . .	550	550	508
Original Works—			
(1) Installation of electric lights and fans in the quarters of the Custo- dian, Archaeological Area, Agra Fort. . . . .	..	765	463
TOTAL . . . . .	70,258	74,428	73,039



APPENDIX III—*contd.*(a) EXPENDITURE ON ESTABLISHMENT, ETC., EXCLUDING CONSERVATION—*contd.**Northern Circle, Hindu and Buddhist Monuments.*

Budget heads.	Original budget allotment for the year 1930-31.	Total allotment as subsequently modified.	Expenditure.
	Rs.	Rs.	Rs.
A. Pay of Officers (Voted) . . . . .	7,400	7,400	7,398
B. Pay of Establishment (Voted) . . . . .	10,081	9,681	9,635
C. Allowances, Honoraria, etc.—			
<i>Voted.</i>			
(i) House-rent and other allowances . . . . .	150	150	150
(ii) Travelling allowance of officers . . . . .	2,900	2,900	2,899
(iii) Travelling allowance of establishment . . . . .	2,340	3,040	3,019
(iv) Compensation for dearness of provisions . . . . .	80	..	..
F. Archaeological Explorations—			
(2) Pay of Establishment . . . . .	3,590	3,590	3,587
(3) Allowances, Honoraria, etc.—			
(ii) Travelling allowance of establishment . . . . .	400	400	371
(4) Supplies and Services—			
(i) Excavations at Harappa . . . . .	20,000	20,000	19,850
G. Museums and Bungalows in the U. P., etc. . . . .	3,400	4,430	4,408
H. Other supplies and services—			
(i) Purchase of photographs and photo-materials . . . . .	800	800	790
(ii) Purchase and repair of tents . . . . .	200	175	161
(iii) Petty supplies and services . . . . .	150	175	173
I. Contingencies . . . . .	5,710	6,710	6,245
L. Works—			
(1) Constructing an additional room for antiquities and chaukidar's quarters at Harappa. . . . .	..	4,000	4,001
(2) Annual repairs to the Combined Godown and Archaeological Rest House at Harappa. . . . .	160	160	125
(3) Annual repairs to Civil Buildings at Taxila, district Rawalpindi . . . . .	..	2,165	2,165
(4) Annual repairs to Archaeological Museum and attached buildings at Sarnath. . . . .	1,284	1,284	1,268
(5) Annual repairs to Custodian's and Servants quarters at Sarnath . . . . .	168	168	118
(6) Annual repairs to Sculptured Godown at Deogarh. . . . .	30	30	30
(7) Annual repairs to Sculptured Godown at Lakhmandel . . . . .	10	10	7
GRAND TOTAL . . . . .	[58,853	67,268	66,490

APPENDIX III—*contd.*(7) EXPENDITURE ON ESTABLISHMENT, ETC., EXCLUDING CONSERVATION—*contd.**Frontier Circle.*

Budget heads.	Original Budget allotment for the year 1930-31.	Total allotment as subsequently modified.	Expenditure.
	Rs.	Rs.	Rs.
A. Pay of officers—			
Non-voted . . . . .	14,900	14,900	14,074
Voted . . . . .	6,367	6,367	6,367
B. Pay of establishment . . . . .	24,310	23,910	23,800
C. Allowances, Honoraria, etc.—			
Non-voted.			
(i) Travelling allowance of officers . . . . .	1,500	1,500	1,241
Voted.			
(i) Travelling allowance of officers . . . . .	1,500	1,000	780
(ii) Travelling allowance to establishment . . . . .	4,800	4,100	4,118
(iii) House-rent and other allowances . . . . .	1,320	1,257	1,210
(iv) Compensation for dearness of provisions . . . . .	80	80	1
F. Archaeological Explorations—			
(i) Excavation charges . . . . .	..	14,000	14,026
G. Museums and Bungalows (Lahore Fort Museum) . . . . .	4,500	2,463	2,427
H. Other Supplies and Services—			
(i) Petty Supplies and Services . . . . .	100	100	..
(ii) Purchase of photographs and photo-materials . . . . .	700	700	717
I. Contingencies . . . . .	3,010	3,010	3,008
F. Works . . . . .	807	989	989
TOTAL . . . . .	63,994	74,376	73,667

*Western Circle.*

Budget heads.	Original Budget allotment for the year 1930-31.	Total allotment as subsequently modified.	Expenditure.
	Rs.	Rs.	Rs.
A. Pay of officers (Voted) . . . . .	14,000	14,000	15,593
B. Pay of establishment . . . . .	15,487	14,987	14,881
C. Allowances, Honoraria, etc.—			
Voted.			
(i) Travelling allowance of officers . . . . .	3,700	5,800	5,786
(ii) Travelling allowance of establishment . . . . .	2,200	2,300	2,513
(iii) House-rent and other allowances . . . . .	1,800	1,800	1,737



APPENDIX III—*contd.*(a) EXPENDITURE ON ESTABLISHMENT, ETC., EXCLUDING CONSERVATION—*contd.**Western Circle—contd.*

Budget heads.	Original Budget allotment for the year 1930-31.	Total allotment as subsequently modified.	Expenditure.
	Rs.	Rs.	Rs.
<i>F. Archaeological explorations—</i>			
(i) Excavations at Kondivte, (District Thana) . . . . .	..	800	800
<i>H. Other Supplies and Services—</i>			
(i) Purchase of photographs and photo-materials . . . . .	550	1,200	[1,101
(ii) Petty supplies and services . . . . .	100	100	92
<i>I. Contingencies . . . . .</i>	4,770	4,120	4,044
<i>L. Works . . . . .</i>	183	183	183
<b>TOTAL</b>	<b>42,850</b>	<b>45,490</b>	<b>46,730</b>

*Central Circle.*

Budget heads.	Original Budget allotment for the year 1930-31.	Total allotment as subsequently modified.	Expenditure.
	Rs.	Rs.	Rs.
<i>A. Pay of officers (Voted) . . . . .</i>	12,429	12,429	12,701
<i>B. Pay of establishment . . . . .</i>	9,388	9,388	9,261
<i>C. Allowances, Honoraria, etc.—</i>			
<i>Voted.</i>			
(i) Travelling allowance of officers . . . . .	2,500	2,885	3,885
(ii) Travelling allowance of establishment . . . . .	3,000	2,292	2,291
(iii) Compensation for dearness of provisions . . . . .	100	..	..
<i>F. Archaeological Explorations—</i>			
(i) Pay of establishment . . . . .	3,590	3,590	3,590
(ii) Travelling allowance of establishment. . . . .	400	400	117
(iii) Compensation for dearness of provisions . . . . .	..	..	..
(iv) <i>Excavation charges—</i>			
(1) Excavation at Nalanda . . . . .	15,000	20,000	19,994
(2) Excavations at Buxar . . . . .	500	..	..
<i>H. Other Supplies and Services—</i>			
(i) Photographs and photo-materials . . . . .	750	925	923
(ii) Petty supplies and services . . . . .	100	175	175
<i>I. Contingencies . . . . .</i>	4,780	4,538	3,970
<i>L. Works—</i>			
Upkeep of Museum and Bungalow at Nalanda . . . . .	600	600	600
<b>TOTAL</b>	<b>53,137</b>	<b>58,223</b>	<b>57,507</b>



## APPENDIX III—contd.

## (a) EXPENDITURE ON ESTABLISHMENT, ETC., EXCLUDING CONSERVATION.

*Eastern Circle.*

Budget heads.	Original budget allotment for the year 1930-31.	Total allotment as subsequently modified.	Expenditure.
	Rs.	Rs.	Rs.
A. Pay of officers (voted) . . . . .	10,632	10,632	8,910
B. Pay of Establishment (voted) . . . . .	10,701	10,251	10,829
C. Allowances, Honoraria, etc. (voted)—			
(i) Travelling allowance of officers . . . . .	2,600	2,600	2,405
(ii) Travelling allowance of establishment . . . . .	1,640	1,640	1,491
(iii) House-rent and other allowances . . . . .	2,880	2,380	2,293
F. Archaeological Exploration—			
(i) Excavations at Paharpur, District Rajshahi . . . . .	14,000	15,082	15,082
(ii) Excavations at Mahaasthan, District Bogra . . . . .	1,500	962	962
(iii) Acquisition of land for excavations at Rangamati, District Murshidabad . . . . .	515	515	515
(iv) Excavations at Rangamati, District Murshidabad . . . . .	1,000	1,000	990
H. Other Supplies and Services—			
(i) Petty supplies and services . . . . .	1,150	750	762
(ii) Purchase of photo-goods and photo-materials . . . . .			
I. Contingencies . . . . .	4,090	3,490	3,114
TOTAL . . . . .	50,708	49,302	47,371

*Southern Circle.*

Budget heads.	Original budget allotment for the year 1929-30.	Total allotment as subsequently modified.	Expenditure.
	Rs.	Rs.	Rs.
A. Pay of Officers (Non-voted) . . . . .	14,400	14,400	14,400
B. Pay of Establishment . . . . .	7,574	7,574	7,541
C. Allowances, Honoraria, etc.—			
(Non-voted).			
(i) Cost of passages granted under the S. C. S. Rules, 1924 . . . . .	3,400	715	355
(ii) Payment on account of medical treatment of British Officers of the S. C. Service . . . . .	200	100	..
(iii) Travelling allowance of officers . . . . .	2,500	3,000	2,363
(Voted).			
(iv) Travelling allowance of establishment . . . . .	1,600	11,300	1,145
F. Archaeological Explorations—			
Excavations at Nagarjunakonda . . . . .	2,000	1,900	1,339
H. Other Supplies and Services—			
(i) Purchase of photographs and photo-materials . . . . .	1,250	950	942
I. Contingencies . . . . .	4,080	3,580	3,445
TOTAL . . . . .	37,004	33,519	31,530

APPENDIX III—*contd.*(a) EXPENDITURE ON ESTABLISHMENT, ETC., EXCLUDING CONSERVATION—*contd.**Burma Circle.*

Budget heads.	Original budget allotment for the year 1930-31.	Total allotment as subsequently modified.	Expenditure.
	Rs.	Rs.	Rs.
A. Pay of Officers (Voted) . . . . .	21,000	21,000	21,000
B. Pay of Establishment . . . . .	11,335	10,880	10,595
C. Allowances, Honoraria, etc. (Voted)—			
(i) Burma allowance . . . . .	1,100	1,100	1,080
(ii) House-rent and other allowances . . . . .	1,800	1,800	1,800
(iii) Travelling allowance of officers . . . . .	2,900	850	847
(iv) Travelling allowance of establishment . . . . .	1,950	1,950	1,909
(v) Payments on account of medical treatment of British Officers of Superior Civil Services. . . . .	300	300	..
F. Archaeological Exploration—			
Explorations and Excavations at—			
(i) Pagan . . . . .	3,500	2,500	2,238
(ii) Hmawza . . . . .			200
(iii) Halingyi . . . . .			19
H. Supplies and Services—			
(i) Purchase of books for library . . . . .	500	..	..
(ii) Archaeological scholarship . . . . .	1,200	1,200	..
(iii) Purchase of photographs and photo-materials . . . . .	800	800	786
(iv) Petty supplies and services . . . . .	200	200	..
I. Contingencies . . . . .	3,620	3,620	3,257
L. Works . . . . .	595	463	462
TOTAL . . . . .	60,800	46,563	44,193

*Office of the Government Epigraphist for India.*

Budget heads.	Original budget allotment for the year 1930-31.	Total allotment as subsequently modified.	Expenditure.
	Rs.	Rs.	Rs.
A. Pay of Officers (Voted) . . . . .	32,600	32,600	32,773
B. Pay of Establishment . . . . .	9,780	9,226	8,768
C. Allowances, Honoraria, etc. (Voted)—			
(i) Travelling allowance of officers . . . . .	2,000	2,000	1,725
(ii) Travelling allowance of establishment . . . . .	1,100	1,950	1,530
(iii) Compensation for dearness of provisions . . . . .	80	..	..
E. Library and Publications—			
Purchase of books for library and other publications (Reproduction of plates and Honoraria for contributions to the Epigraphia Indica). . . . .	4,500	1,700	1,032
H. Other Supplies and Services—			
(i) Petty supplies and services . . . . .	150	..	..
I. Contingencies . . . . .	5,720	5,720	5,803
TOTAL . . . . .	55,930	53,196	51,431



APPENDIX III—*contd.*(a) EXPENDITURE ON ESTABLISHMENT, ETC., EXCLUDING CONSERVATION—*contd.**Office of the Assistant Archaeological Superintendent for Epigraphy, Southern Circ'e.*

Budget heads.	Original budget allotment for the year 1930-31.	Total allotment as subsequently modified.	Expenditure.
	Rs.	Rs.	Rs.
A. Pay of Officers (Voted) . . . . .	4,944	4,944	3,653
B. Pay of Establishment . . . . .	14,108	14,108	14,243
C. Allowances, Honoraria, etc. (Voted)—			
(i) House-rent and other allowances . . . . .	260	260	180
(ii) Travelling allowance of officers . . . . .	1,500	1,200	787
(iii) Travelling allowance of establishment . . . . .	1,950	1,950	1,028
H. Other Supplies and Services—			
(i) Petty supplies and services . . . . .	600	400	216
I. Contingencies . . . . .	5,300	5,300	4,299
TOTAL . . . . .	28,662	28,163	24,405

*Office of the Archaeological Chemist in India.*

Budget heads.	Original budget allotment for the year 1930-31.	Total allotment as subsequently modified.	Expenditure.
	Rs.	Rs.	Rs.
A. Pay of Officers (Voted) . . . . .	12,000	12,000	11,982
B. Pay of Establishment . . . . .	3,062	3,062	2,950
C. Allowances, Honoraria, etc. (Voted)—			
(i) Travelling allowance of officers . . . . .	2,800	2,300	1,871
(ii) Travelling allowance of establishment . . . . .	1,000	600	474
E. Archaeological Exploration—			
(i) Pay of Assistant Archaeological Chemist . . . . .	5,819	5,819	5,596
(ii) Pay of establishment . . . . .	1,028	1,028	1,025
(iii) Travelling allowance of Assistant Archaeological Chemist . . . . .	1,500	1,400	729
(iv) Travelling allowance of establishment . . . . .	400	400	251
H. Other Supplies and Services—			
(i) Purchase of Stores . . . . .	1,500	1,500	1,400
I. Contingencies . . . . .	2,550	2,650	2,649
TOTAL . . . . .	31,859	30,759	29,017



APPENDIX III—*contd.*(a) EXPENDITURE ON ESTABLISHMENT, ETC., EXCLUDING CONSERVATION—*contd.**Indian Museum, Archaeological Section.*

Budget heads.	Original budget allotment for the year 1930-31.	Total allotment as subsequently modified.	Expenditure.
	Rs.	Rs.	Rs.
A. Pay of Officers (Voted) . . . . .	10,065	10,065	10,065
B. Pay of Establishment . . . . .	13,219	13,219	12,879
C. Allowances, Honoraria, etc. (Voted)—			
(i) House-rent and other allowances . . . . .	2,940	2,940	2,940
(ii) Travelling allowance of officers . . . . .	1,600	1,800	1,786
(iii) Travelling allowance of establishment . . . . .	640	1,090	1,090
H. Other Supplies and Services—			
(i) Purchase and acquisition of antiquities . . . . .	1,500	1,500	1,499
I. Contingencies . . . . .	4,750	5,500	5,497
TOTAL . . . . .	34,714	36,114	35,756

*Central Asian, Antiquities Museum.*

Budget heads.	Original budget allotment for the year 1930-31.	Total allotment as subsequently modified.	Expenditure.
	Rs.	Rs.	Rs.
A. Pay of Officers (Voted) . . . . .	4,700	4,700	4,658
B. Pay of Establishment . . . . .	2,602	3,311	3,205
C. Allowances, Honoraria, etc. (Voted)—			
(i) Travelling allowance of officers . . . . .	..	151	150
(ii) Travelling allowance of establishment . . . . .	..	6	4
I. Contingencies . . . . .	4,850	4,478	4,245
L. Works . . . . .	1,500	1,314	1,315
TOTAL . . . . .	13,652	13,960	13,577

*Delhi Museum of Archaeology.*

Budget heads.	Original budget allotment for the year 1930-31.	Total allotment as subsequently modified.	Expenditure.
	Rs.	Rs.	Rs.
B. Pay of Establishment . . . . .	11,798	11,798	12,378
C. Allowances, Honoraria, etc. (Voted)—			
(i) Compensation for dearth of provisions . . . . .	80	..	..
I. Contingencies . . . . .	2,550	2,550	2,616
TOTAL . . . . .	14,428	14,348	14,894

## APPENDIX III—contd.

## Summary of Expenditure on Conservation Works, 1930-31.

Province.	Original budget allotment for the year 1930-31.	Total allotment as subsequently modified.	Expenditure.
	Rs.	Rs.	Rs.
United Provinces of Agra and Oudh—			
Muhammadan and British Monuments . . . . .	1,25,898	1,32,924	1,28,993
Hindu and Buddhist Monuments . . . . .	11,509	10,653	10,187
Delhi . . . . .	92,836	95,095	88,009
Punjab—			
Muhammadan and British Monuments . . . . .	83,642	1,01,490	1,03,113
Hindu and Buddhist Monuments . . . . .	9,935	8,665	8,382
North-West Frontier Province . . . . .	2,516	3,474	3,388
Bombay . . . . .	1,44,264	1,41,608	1,48,608
Bihar and Orissa . . . . .	30,652	26,707	23,583
Central Provinces and Berar . . . . .	35,785	33,405	31,350
Bengal . . . . .	30,964	30,596	29,350
Assam . . . . .	17,126	15,867	15,194
Madras . . . . .	30,959	29,623	28,497
Coorg . . . . .	1,547	1,547	1,118
Burma . . . . .	43,517	45,897	44,179
Rajputana and Central India . . . . .	3,898	4,029	3,445
Datla State . . . . .	2,500	2,500	2,500
Chhatarpur State . . . . .	4,686	4,686	4,686
Dhar State . . . . .	2,000	2,000	2,000
Reserve . . . . .	27,880	..	..
TOTAL	7,02,114	6,90,766	6,75,577
Deduct—Contribution of the Bihar and Orissa Government for special repairs to Rohtasgarh Fort in Bihar and Orissa.	..	—1,312	—1,265
NET TOTAL	7,02,114	6,89,454	6,75,312



## APPENDIX III—contd.

## (b) EXPENDITURE ON CONSERVATION.

## Northern Circle, Muhammadan and British Monuments.

District.	Locality.	Name of work and description.	Amount of sanctioned estimate.	Allotment for the year 1930-31.	Total allotment as subsequently modified.	Amount spent during the year.	REMARKS.
1	2	3	4	5	6	7	8
			Ra.	Ra.	Ra.	Ra.	
		UNITED PROVINCES OF AGRA AND OUDH.					
		<i>Special Repairs (Non-recurring charges) carried out by the Archaeological Department.</i>					
Agra . .	Itbari Khan's mosque.	Providing an enclosure wall round Itbari Khan's mosque and the statue of Akbar's horse at Agra.	640	640	..	..	The work could not be taken up in hand as the proposals for the acquisition of land required for the work were not sanctioned.
Do. . .	Agra . .	Providing frames for historical notices for the monuments at Agra.	212	250	250	244	Completed.
Do. . .	Fatehpur Sikri	Reconstruction of the roof of the Zenana Rauza at Fatehpur Sikri.	14,421	..	14,421	14,229	In progress.
Do. . .	Taj Mahal .	Special repairs to Electric Installation at the Taj Mahal.	110	..	110	110	Completed.
Cawnpore .	Cawnpore .	Lay out of Wheeler's Entrenchment at Cawnpore.	9,846	9,846	4,331	3,750	In progress.
Mainpuri .	Rapri . .	Special repairs to Idgah at Rapri .	1,903	1,903	1,258	1,258	Completed.
Do. . .	Do. . .	Special repairs to the tombs of Shah Nizamuddin Nasiruddin, Fariduddin and his mother at Rapri.	1,441	1,441	981	980	Do.
Jaunpur . .	Jaunpur . .	Special repairs to Khalis Mukhalis or Char Ungli mosque at Jaunpur.	5,741	5,741	4,435	4,435	Do.
Do. . .	Do. . .	Reroofing the kiosk No. 88 on Akbari bridge at Jaunpur.	204	204	191	191	Do.
Bareilly . .	Bareilly . .	Special repairs to the tomb of Hafiz Rahmat Khan at Bareilly.	859	859	761	761	Do.
Banda . . .	Banda . . .	Special repairs to Jami Masjid at Banda.	470	470	492	492	Do.
Lucknow . .	Lucknow . .	Converting the cattle shed into Bankati's quarters at Residency Lucknow.	332	332	316	316	Do.
Do. . .	Do. . .	Special repairs to the Dargah of Hazrat Abbas at Lucknow.	4,200	2,406	3,761	3,761	Do.
Moradabad .	Sambhal . .	Special repairs to the Jami Masjid at Sambhal.	1,092	1,092	1,057	1,056	Do.
Moorut . . .	Moorut . . .	Special repairs to the Shahpir's tomb at Moorut.	1,030	1,030	1,076	1,076	Do.
		TOTAL	..	26,214	33,440	32,659	
		<i>Annual repairs (Recurring charges) carried out by the Archaeological Department.</i>					
Agra . . .	Agra . . .	Roman Catholic Cemetery . .	384	350	372	372	
Do. . .	Do. . .	Kans gate and Pul Chhanga Modi	5	5	5	5	
		Carried over		365	377	377	



## APPENDIX III—contd.

## (b) EXPENDITURE ON CONSERVATION—contd.

## Northern Circle, Muhammadan and British Monuments—contd.

District.	Locality.	Name of work and description.	Amount of sanctioned estimate.	Allotment for the year 1980-31.	Total allotment as subsequently modified.	Amount spent during the year.	REMARKS.
1	2	3	4	5	6	7	8
		Brought forward		355	377	377	
		UNITED PROVINCES OF AGRA AND OUDH—contd.					
		<i>Annual repairs (Recurring charges) carried out by the Archaeological Department—contd.</i>					
Agra	Agra	Itbari Khan's tomb	50	50	50	19	
Do.	Do.	Salabat Khan and Sadiq Khan's tombs.	25	25	25	15	
Do.	Do.	Guru-ka-Tal	30	30	35	35	
Do.	Do.	Jodha Bai's Chhatri	20	20	20	20	
Do.	Do.	Chhatri on Agra Muttra road	10	10	10	5	
Do.	Do.	Dhakre-ka-Mahal	5	5	5	5	
Do.	Do.	Delhi Gate	10	10	10	9	
Do.	Do.	Agra Fort buildings	9,150	9,150	9,150	9,231	
Do.	Do.	Humayn's mosque	10	10	10	10	
Do.	Do.	Itmadu-d-Daulah's tomb	1,646	1,300	1,660	1,661	
Do.	Do.	Ram Bagh Bara daris, kiosks terrace, katra and gateways.	931	800	1,060	1,049	
Do.	Do.	Chini-ka-Rauza, including well tank and kiosks.	408	750	750	471	
Do.	Do.	Kala Gumbad near Chini-ka-Rauza	10	10	13	13	
Do.	Do.	Zohra Bagh river side kiosks adjoining Chini-ka-Rauza.	..	50	50	..	
Do.	Do.	Chhatri on the bank of Jumna river to the north of Ram Bagh.	..	50	50	..	
Do.	Do.	Mehtab Bagh on the river bank facing the Taj.	35	35	35	44	
Do.	Do.	Mosque adjoining the mausoleum of Jafar Khan.	100	100	160	97	
Do.	Do.	Well and flight of steps in the Char Bagh.	100	100	108	108	
Do.	Do.	Tomb of Firoz Khan	200	200	205	204	
Do.	Tajgunj	Taj buildings	7,900	7,900	7,900	7,990	
Do.	Do.	Gateways in Tajgunj	50	50	56	55	
Do.	Do.	Maintenance of Electric line at the Taj.	1,200	1,200	1,200	1,044	
Do.	Sikandra	Akbar's tomb	5,200	5,200	5,200	4,887	
Do.	Do.	Kanch Mahal	50	50	54	53	
Do.	Do.	Mariam's tomb	300	300	300	288	
Do.	Itmadpur	Burhis-ka-Tal	350	350	350	295	
Do.	Kagaraul	Barakhamba	10	10	10	10	
		Carried over		28,120	28,793	27,895	

## APPENDIX III—contd.

## (b) EXPENDITURE ON CONSERVATION—contd.

## Northern Circle, Muhammadan and British Monuments—contd.

District.	Locality.	Name of work and description.	Amount of sanctioned estimate.	Allotment for the year 1930-31.	Total allotment as subsequently modified.	Amount spent during the year.	REMARKS.
1	2	3	4	5	6	7	8
		Brought forward		28,120	28,793	27,905	
		UNITED PROVINCES OF AGRA AND OUDH—contd.					
		Annual repairs (Recurring charges) carried out by the Archaeological Department—contd.					
Agra	Fatehpur Sikri	Fatehpur Sikri group of buildings	8,000	8,000	7,108	6,467	
Do.	Jahner	Jagner Fort	500	500	500	480	
Aligarh	Aligarh	Aligarh Fort	150	150	150	150	
Farrukhabad	Qaimganj	Tomb of Nawab Rashid Khan	24	24	24	23	
Do.	Kananj	Tomb and mosque of Makhdum Jahanian.	200	200	214	213	
Do.	Do.	Tomb of Balapir	75	75	75	69	
Meerut	Meerut	Tomb of Abu Muhammad Khan	400	400	400	350	
Do.	Sardhana	Cemetery	250	250	255	255	
Do.	Do.	Roman Catholic Church	150	150	150	150*	*Carried out by the Roman Catholic Archbishop of Agra.
Mattrā	Agra-Delhi Road.	Kas Minars	93	100	100	93	
Bijnor	Najibabad	Tomb of Nawab Najibuddaula	10	10	10	10	
Do.	Do.	Pathargarh Fort	225	225	225	200	
Do.	Madawar	Jami Masjid and well	..	..	12	12	
Dehra Dun	Dehra Dun	Kalinga monuments	16	10	10	10	
Hardoi	Shahabad	Maqbara of Nawab Diler Khan	50	50	50	48	
Cawnpore	Cawnpore	Swada Kothi monuments including flight of steps and surrounding plateau.	20	20	20	20	
Do.	Do.	Cross situated at the Masacre ghat	10	10	10	9	
Do.	Do.	Memorial well garden	200	200	..	.. †	†The work was not taken up.
Fyzabad	Akbarpur	Mosque in the fort	25	25	25	24	
Do.	Fyzabad	Gulab Bari tomb	400	500	500	500‡	‡Carried out by the Deputy Commissioner, Fyzabad.
Rai Bareilly	Rai Bareilly	Sai Bridge	10	10	10	10	
Do.	Do.	Baoli or Bara Kunwan	5	5	5	5	
Do.	Do.	Gateway to the Fort	10	10	10	10	
Mirzapur	Chunar	Iftikhar Khan's tomb	169	170	170	170	
Benares	Benares	Tomb of Lal Khan	10	10	10	9	
Do.	Do.	Aurangzeb's mosque	..	..	19	19	
Ghazipur	Bhitri	Stone bridge	15	15	15	15	
		Carried over		39,239	38,870	37,316	



## APPENDIX III—contd.

## (b) EXPENDITURE ON CONSERVATION—contd.

## Northern Circle, Muhammadan and British Monuments—contd.

District.	Locality.	Name of work and description.	Amount of sanctioned estimate.	Allotment for the year 1930-31.	Total allotment as subsequently modified.	Amount spent during the year.	REMARKS.
1	2	3	4	5	6	7	8
		Brought forward		39,239	38,870	37,316	
		UNITED PROVINCES OF AGRA AND OUDH—contd.					
		<i>Annual repairs (recurring charges) carried out by the Archaeological Department—contd.</i>					
Azamgarh	Mehnagar	Daulat's tomb . . . . .	191	191	194	193	
Sultanpur	Isauli	Mosque at Isauli . . . . .	20	20	20	20	
Allahabad	Allahabad	Zanana Palace in Allahabad Fort	147	147	150	149	
Do.	Do.	Tomb of Sultan Khusru, his mother and sister, Bibi Tamolin and enclosure wall and gateway of Khusru Bagh.	506	506	506	463	
Jaunpur	Jaunpur	Gomti bridge, Rauza of Shah Firoz, Tomb of Sher Khan, etc.	1,020	1,020	1,032	1,031	
Fatehpur	Khajurha	Aurangzeb's pavilion including surrounding gardens.	140	140	140	138	
Jalaun	Kalpi	Chaurasi Gumbad . . . . .	50	50	50	50	
Do.	Do.	Muhammadan and British Monuments.	..	..	52	52	
Jhansi	Erich	Jami Masjid . . . . .	..	..	22	22	
Lucknow	Lucknow	Nadan Mahal and Ibrahim Chishti's Tomb.	100	100	100	62	
Do.	Do.	Bibiapur House . . . . .	175	175	175	145	
Do.	Do.	Neil's gate . . . . .	20	15	17	17	
Do.	Do.	Residency buildings and caretaker's quarters.	1,200	1,350	1,400	1,378	
Do.	Do.	Sikandar Bagh . . . . .	100	100	100	75	
Do.	Do.	Alam Bagh House . . . . .	200	200	210	206	
Do.	Do.	Dilkusha Palace . . . . .	200	200	200	167	
Do.	Do.	Qaisar Bagh gates . . . . .	50	50	50	45	
Do.	Do.	Janab Aliya's tomb . . . . .	50	50	65	63	
Do.	Do.	Koofa mosque in Rauza Kazmain	75	75	75	73	
Do.	Do.	Dargah Hazrat Abbas . . . . .	250	275	275	267	
United Provinces.	United Provinces.	Two temporary draftsmen for Survey work at Rs. 55 per mensem for 12 months.	..	1,320	1,320	1,320	
Do.	Do.	Travelling allowance for above . . . . .	..	200	200	..	
Do.	Do.	Contingencies for above . . . . .	..	500	500	77	
		TOTAL		45,923	45,723	43,329	



## APPENDIX III—contd.

## (b) EXPENDITURE ON CONSERVATION—contd.

## Northern Circle, Muhammadan and British Monuments—contd.

District.	Locality.	Name of Gardens.	Allotment for the year 1930-31.	Total allotment as subsequently modified.	Amount spent during the year.	REMARKS.
1	2	3	4	5	6	7
		UNITED PROVINCES OF AGRA AND OUDH—concl'd.	Rs.	Rs.	Rs.	
		<i>Maintenance of Gardens (Recurring charges).</i>				
Agra . . .	Agra . . .	Taj, Khan-i-Alam, Agra Fort, Itimad-ud-Daula, Chini-ka-Reza, Ram Bagh, Roman Catholic Cemetery.	53,125	53,125	52,470	
Do. . .	Sikandra . . .	Akbar's tomb . . . . .				
Lucknow . . .	Lucknow . . .	The Residency, Nadan Mahal and Ibrahim Chishti's tomb.				
Allahabad . . .	Allahabad . . .	Khusru Bagh . . . . .				
Cawnpore . . .	Cawnpore . . .	Wheeler's Entrenchment and Iona Cross gardens.	636	636	534	
		TOTAL GARDENS . . . . .	53,761	53,761	53,004	

## SUMMARY.

	Rs.
(1) Total Special Repairs carried out by the Archaeological Department . . . . .	32,659
(2) Total Annual Repairs carried out by the Archaeological Department . . . . .	43,329
(3) Total for maintenance of gardens . . . . .	53,004
GRAND TOTAL FOR THE UNITED PROVINCES . . . . .	128,992

District.	Locality.	Name of work and description.	Amount of sanctioned estimate.	Allotment for the year 1930-31.	Total allotment as subsequently modified.	Amount spent during the year.	REMARKS.
1	2	3	4	5	6	7	8
		DELHI PROVINCE.	Rs.	Rs.	Rs.	Rs.	
		<i>Special repairs (Non-recurring charges) carried out by the Public Works Department.</i>					
Delhi . . .	Delhi . . .	Conservation of surrounding Dalans at Purana Qila.	15,000	875	1,073	903	Completed.
Do. . .	Do. . .	Conservation of Shikargah at Kushak.	4,508	2,628	2,699	2,699	Do.
Do. . .	Do. . .	Conservation of Kali Masjid at Nizamuddin.	5,129	764	784	758	Do.
Do. . .	Do. . .	Conservation of Satpulla at Khirkee.	1,579	1,416	1,416	1,333	Do.
Do. . .	Do. . .	Conservation of gates at Badarpur Sarai.	2,378	2,133	2,133	486	In progress.
Do. . .	Do. . .	Conservation of tomb of Mirza Musaffar Husain locally known as Bata Batachewala Mahal.	2,450	2,198	2,170	1,809	Completed.
		Carried over . . . . .		10,014	10,255	7,979	

## APPENDIX III—contd.

## (b) EXPENDITURE ON CONSERVATION—contd.

## Northern Circle, Muhammadan and British Monuments—contd.

District.	Locality.	Name of work and description.	Amount of sanctioned estimate.	Allotment for the year 1930-31.	Total allotment as subsequently modified.	Amount spent during the year.	REMARKS.
1	2	3	4	5	6	7	8
		Brought forward .	Rs.	Rs. 10,014	Rs. 10,225	Rs. 7,979	
		DELHI PROVINCE—contd. <i>Special repairs (Non-recurring charges) carried out by the Public Works Department—contd.</i>					
Delhi	Delhi	Conservation of tomb locally known as Chhota Bataabewala Mahal.	565	507	507	475	Completed.
Do.	Do.	Conservation of Nili Chhatra .	1,130	909	1,014	869	Do.
Do.	Do.	Conservation of tomb to the east of Bara Bataabewala Mahal.	772	692	720	720	Do.
Do.	Do.	Conservation of tomb locally known as Sunderwala Mahal.	2,201	1,974	1,974	1,974	Do.
Do.	Do.	Conservation of tomb locally known as Sunderwala Burj.	304	273	273	220	Do.
Do.	Do.	Conservation of an unknown tomb	1,438	1,290	1,290	1,216	Do.
Do.	Do.	Conservation of gateway at Badli Sarai.	2,123	1,904	559	1,891	Do.
Do.	Do.	Special repairs to the well at Haus Khas.	170	152	nil	nil	
Do.	Do.	Planting of cypress trees at Sanderson Sundial Memorial at the Qutb.	29	nil	26	27	Do.
Do.	Do.	Extension of pipe line and the construction of two hydrants at Qutb gardens.	521	nil	467	437	Do.
Do.	Do.	Demantling walls of Kutchra and pacca houses around Kali Masjid at Nizamuddin and fixing boundary pillars.	540	nil	484	472	Do.
Do.	Do.	Altering situation of supply pipes for Mutiny Memorial lawns in Delhi.	56	nil	50	40	
Do.	Do.	Renewal of the roof of Diwan-i-Khas in Delhi Fort.	2,271	nil	2,036	2,112	Completed.
Do.	Do.	Erection of 4 turnstiles of teakwood at Safdarjang's tomb.	190	nil	170	168	Do.
Do.	Do.	Improving the drainage of the courtyard of Khairul Manzil mosque and removing the modern buttresses of its gateway.	916	..	807	nil	
Do.	Do.	Special repairs to Nai ka Kot at Tughlaqabad.	1,110	..	538	nil	
		TOTAL .	..	17,715	21,170	18,600	
		Add agency charges at 11½ per cent.	..	2,038	2,434	2,139	
		TOTAL .	..	19,752	23,605	20,739	
		<i>Special repairs (Non-recurring charges) carried out by the Archaeological Department.</i>					
Delhi	Begumpur	Special repairs to the Begumpuri mosque.	13,452	3,000	3,000	2,996	In progress.
Do.	Roshan Ara garden.	Special repairs to the tomb and Baradari of Roshan Ara.	749	..	749	746	Completed.
Do.	Delhi Province.	Providing frames for the historical notices.	211	200	174	174	Do.
		TOTAL .	..	3,200	3,923	3,916	



## APPENDIX III—contd.

## (b) EXPENDITURE ON CONSERVATION—contd.

## Northern Circle, Muhammadan and British Monuments—contd.

District.	Locality.	Name of work and description.	Amount of sanctioned estimate.	Allotment for the year 1930-31.	Total allotment as subsequently modified.	Amount spent during the year.	REMARKS.
1	2	3	4	5	6	7	8
			Rs.	Rs.	Rs.	Rs.	
		DELHI PROVINCE—contd.					
		<i>Annual repairs (recurring charges) carried out by the Public Works Department.</i>					
Delhi	Notified Area Section.	1. Miniature batteries . . .					
		2. Asoka pillar on the ridge .					
		3. Baoli and underground passage at Ridge.					
		4. Mutiny Memorial . . .					
		5. Chauburji Masjid . . .					
		6. Wazirabad mosque and bridge					
		7. Gateway and mosque in Qudsia Bagh.					
		8. Tripolia . . . . .					
		9. Baradari and Punjabee gate of Roohanara garden.					
		10. Pir Ghalb . . . . .					
	Delhi Fort and City Section.	11. Shah Burj and Hayat Bakhsb garden.					
		12. Diwan-i-Khas, Rang Mahal .					
		13. Naubat Khana . . . .					
		14. Mumtaz Mahal . . . .					
		15. Tank in Delhi Fort . . .					
		16. Sawan Bhadon and Zafar Mahal.					
		17. Moti Masjid, Hammam and Samman Burj.					
		18. Sunheri Masjid . . . .					
		19. Tomb of Razia Begam . .					
		20. Kalan Masjid . . . . .					
		21. Kashmere Gate . . . .					
		22. Delhi Gate . . . . .					
		23. Portion of city wall near which Brigadier General John Nicholson was mortally wounded.					
	Qutb Section	24. Qutb Minar and all buildings in the area.					
		25. Jahaz Mahal . . . . .					
		26. Adham Khan's tomb at Mehrauli.					
		27. Bahadur Shah II's Palace at Mehrauli.					
		28. Haуз Shamal with central pavilion.					
		29. Moti Masjid . . . . .					



## APPENDIX III—contd.

## (b) EXPENDITURE ON CONSERVATION—contd.

## Northern Circle, Muhammadan and British Monuments—contd.

District.	Locality.	Name of work and description.	Amount of sanctioned estimate.	Allotment for the year 1930-31.	Total allotment as subsequently modified.	Amount spent during the year.	REMARKS.
1	2	3	4	5	6	7	8
			Rs.	Rs.	Rs.	Rs.	
		DELHI PROVINCE—contd.					
		<i>Annual Repairs (recurring charges) carried out by the Public Works Department—contd.</i>					
Delhi	Qutb Section	30. Rajon-ki-Bain . . . . .					
		31. Gandak-ki-Baoli (also called diving well).					
		32. Mosque at the south-west corner of Bagh-i-Nazir.					
		33. Tomb and mosque of Jamali Kamali.					
		34. Muhammad Quli Khan's tomb at Mehrauli.					
		35. Wall mosque at Mehrauli . . . . .					
		36. Qila Rai Pithora . . . . .					
		37. Badaun gate . . . . .					
		38. Sultan Ghari's tomb at Mahapalpur.					
	Siri Section	39. Kalu Sarai mosque . . . . .					
		40. Bijai Mandal . . . . .					
		41. Begampuri mosque . . . . .					
		42. Sarai Shahji . . . . .					
		43. Lal Gumbad . . . . .					
		44. Tomb of Yusuf Qattal Khirki . . . . .					
		45. Khirki Masjid . . . . .					
		46. Satpula Khirki . . . . .					
		47. Bahlol Lodi's tomb . . . . .					
		48. Unnamed tomb at Chiragh Delhi.					
		49. Bastion at Siri . . . . .					
		50. Siri old city wall and internal buildings.					
		51. Muhammadi Wali Masjid near Shahpur.					
		52. Nili Masjid . . . . .					
		53. Chor Minar . . . . .					
		54. Moth-ki-Masjid . . . . .					
		55. Tomb of Shaikh Kabiruddin also known as Rakab wala gumbad.					
	Tughlaqabad Section.	56. Road front of Tughlaqabad . . . . .					
		57. Ghiasuddin Tughlaq's tomb at Tughlaqabad.					
		58. Wall, gates, bastions of Adilabad and Nai-ka-Kot.					

## APPENDIX III—contd.

## (b) EXPENDITURE ON CONSERVATION—contd.

## Northern Circle, Muhammadan and British Monuments—contd.

District.	Locality.	Name of work and description.	Amount of sanctioned estimate.	Allotment for the year 1930-31.	Total allotment as subsequently modified.	Amount spent during the year.	REMARKS.
1	2	3	4	5	6	7	8
			Rs.	Rs.	Rs.	Rs.	
		DELHI PROVINCE—contd.					
		<i>Annual Repairs (recurring charges) carried out by the Public Works Department—contd.</i>					
Delhi	Lodi Section	59. Kotla Mubarakpur group					
		60. Darya Khan's tomb					
		61. Zamurdpur monuments					
		62. Basti Baoli group					
		63. Tomb of Najaf Khan					
		64. Safdarjang's tomb and mosque					
		65. Lodi's tomb at Khairpur					
		66. Old Lodi Bridge with approaches.					
		67. Humayun's tomb and tomb of his barber.					
		68. Isa Khan's tomb with Mosque					
		69. Bu Halima's garden, Gateway and wall.					
		70. Arab Sarai gateway and wall					
		71. Tomb and mosque of Afzarwala to the west of Humayun's mosque.					
		72. Nila Gumbad to the east of Humayun's tomb.					
		73. Khan Khanan's tomb					
		74. Sabz Burj					
		75. Bara pula					
		76. Tomb and Baoli at Nizamuddin.					
		77. Dargah of Amir Khusru at Nizamuddin.					
		78. Atgah Khan's tomb					
		79. Junan Shah's Masjid					
		80. Three domed tomb near old railway station Nizamuddin.					
	Hauz Khas Section	81. Tomb between Qutb road and Hauz Khas.					
		82. Hauz Khas group of buildings including tomb of Firozshah.					
		83. Repairs to approach road to Hauz Khas.					
		84. Humayunpur monuments					
		85. Muhammadpur monuments					
		86. Manir-ka-monuments					
	Purana Qila Section	87. Purana Qila					
		88. Khairul Manzil and Sher Shah's gateway.					



## APPENDIX III—contd.

## (b) EXPENDITURE ON CONSERVATION—contd.

## Northern Circle, Muhammadan and British Monuments—contd.

District.	Locality.	Name of work and description.	Amount of sanctioned estimate.	Allotment for the year 1930-31.	Total allotment as subsequently modified.	Amount spent during the year.	REMARKS.
1	2	3	4	5	6	7	8
			Rs.	Rs.	Rs.	Rs.	
		DELHI PROVINCE—contd.					
Delhi	Purana Qila Section.	Annual Repairs (recurring charges) carried out by the Public Works Department—contd.					
		89. Kotla Firuz Shah . . . . .					
		90. Lal Darwaza . . . . .					
		91. Abdun-Nabi's mosque near Haveli Mahabat Khan.					
		92. Lal Bangla . . . . .					
		93. Monuments between Purana Qila and Humayun's tomb.					
	Miscellaneous Section.	94. Shikargah Kushak . . . . .					
		95. Bistdari buildings . . . . .	17,775	16,143	15,000	14,489	Completed.
		96. Qadam Sharif . . . . .					
		97. Bholi Bhatlari-ka-Mahal . . . . .					
		98. Tomb and mosque of Ghazi-uddin outside Ajmeri gate.					
		99. Koe Minar . . . . .					
		100. Pul Chaddar about $\frac{1}{4}$ mile to the south of village Chaukri Muharakabad.					
		Supply of liveries to Chaukidars of Archaeological buildings.	1,066	..	..	125	
		TOTAL . . . . .	..	16,143	15,000	14,614	
		Add agency charges at 11 $\frac{1}{4}$ % . . . . .	..	1,856	1,725	1,680	
		TOTAL . . . . .	..	17,999	16,725	16,294	
		Maintenance of gardens (recurring charges) including pumping installation at the Qutb carried out by the Public Works Department.					
Delhi	Delhi	Kotla Firuz Shah, Purana Qila, Humayun's tomb, Bu Halima's garden, Isa Khan's tomb, Arab Sarai, Safdarjung's tomb, Hazrat Khan and Qutb gardens.	43,100	38,654	38,090	34,839	
Do.	Delhi Fort	Fort gardens water supply including maintenance of pipes, etc.	3,757	3,370	3,370	3,396	
		TOTAL . . . . .		42,024	41,460	38,235	
		Agency charges at 11 $\frac{1}{4}$ % . . . . .		4,834	4,707	4,391	
		TOTAL . . . . .		46,858	46,167	42,626	



APPENDIX III—*contd.*(b) EXPENDITURE ON CONSERVATION—*contd.*Northern Circle, Muhammadan and British Monuments—*concl.*

District.	Locality.	Name of work and description.	Amount of sanctioned estimate.	Allotment for the year 1930-31.	Total allotment as subsequently modified.	Amount spent during the year.	REMARKS.
1	2	3	4	5	6	7	8
			Rs.	Rs.	Rs.	Rs.	
		Brought forward		46,858	46,217	42,596	
		<i>Maintenance of Delhi Fort Gardens carried out by the Deputy Commissioner, Delhi.</i>					
Delhi	Delhi Fort	Maintenance of Delhi Fort gardens	5,026	5,026	4,626	4,460	
		TOTAL		5,026	4,626	4,460	
		GRAND TOTAL FOR MAINTENANCE OF ARCHÆOLOGICAL GARDENS AT DELHI		51,884	50,843	47,056	

## SUMMARY.

	Rs.
(1) Total Special Repairs carried out by the Public Works Department . . . . .	20,739
(2) Total Special Repairs carried out by the Archæological Department . . . . .	3,916
(3) Total Annual Repairs carried out by the Public Works Department . . . . .	16,294
(4) Total for Maintenance of Gardens . . . . .	47,056

GRAND TOTAL FOR DELHI PROVINCE . . . . . 88,005

*Summary of expenditure incurred on the conservation of Muhammadan and British Monuments in the United Provinces and Delhi during the year 1930-31.*

Province.	Total amount spent on Special Repairs during the year 1930-31.	Total amount spent on Annual Repairs during the year 1930-31.	Total amount spent on the maintenance of gardens during the year 1930-31.	TOTAL.
	Rs.	Rs.	Rs.	Rs.
United Provinces . . . . .	22,659	43,329	53,004	1,28,992
Delhi Province . . . . .	24,655	16,294	47,056	88,005
TOTAL	57,314	59,623	1,00,060	2,16,997

## APPENDIX III.

## (b) EXPENDITURE ON CONSERVATION—contd.

## Frontier Circle, Muhammadan and British Monuments in the Punjab—contd.

District.	Locality.	Name of work and description.	Amount of sanctioned estimate.	Allotment for the year 1930-31.	Total allotment as subsequently modified.	Amount spent during the year.	REMARKS.
1	2	3	4	5	6	7	8
		PUNJAB.	Rs.	Rs.	Rs.	Rs.	
		<i>Special Repairs (non-recurring charges) carried out by the Archaeological Department.</i>					
Lahore	Lahore Fort	Levelling and dressing the area of Diwan-i-Am enclosure for turfing.	6,138	873	873	873	Completed.
Do.	Do.	Repairs to servants' quarters at Lahore Fort.	2,450	2,450	2,506	2,506	Do.
Do.	Do.	Providing compound wall to above	990	990	952	952	Do.
Do.	Do.	Raising 2 feet above the ground level the walls of the ruined compartments at the north-east corner of the Diwan-i-Am courtyard.	9,352	..	9,035	8,980	Do.
Do.	Do.	Demolishing modern structures and levelling their courts.	978	978	2,278	2,367	Do.
Do.	Do.	Dismantling roads, excavating earth from raised portions.	1,641	1,641	..	..	Do.
Do.	Do.	Special Repairs to Hathipole Gate.	3,146	3,146	2,819	2,818	Do.
Do.	Do.	Special Repairs to Hazuri Bagh Gate.	8,206	1,977	3,568	3,568	In progress.
Do.	Chauburji	Special Repairs to Chauburji Monument.	3,336	3,336	3,336	3,338	Completed.
Do.	Lahore	Petty Repairs to Badshahi Mosque.	204	..	322	322	Do.
Do.	Lahore Fort	Constructing drain at the Hathipole Gate.	327	..	327	320	Do.
Do.	Do.	Constructing drain at the roadside in Lahore Fort.	394	..	394	395	Do.
Do.	Do.	Providing squares at the crossings of pathways, the spreading and ramming of Delhi murum over them and purchase of shrubs.	2,477	..	2,477	2,459	Do.
Gujrat	Kharian	Filling up Aurangzeb's Baoli at Kharian.	4,976	4,976	4,802	4,802	Do.
Do.	Do.	Pumping of water from the well of the above Baoli.	2,340	2,340	2,340	2,340	Do.
Attock	Begum-Ki-Sarai.	Special Repairs to Begum-Ki-Sarai (supplementary estimate).	4,663	4,463	4,270	4,270	Do.
Sheikhupura	Shahdara	Special Repairs to Jahangir's Tomb at Shahdara. (Restoration of the northern causeway from the main entrance to the central tank in Jahangir's Tomb at Shahdara).	3,300	3,300	3,300	3,299	Do.
Rohtak	Mahem	Fixing boundary pillars at the principal corners of the land attached to Shah Jahan's Baoli at Mahem.	102	102	..	..	
Gurdaspur	Kalanaur	Special Repairs to Takht-i-Akbari at Kalanaur.	967	967	..	..	
Multan	Multan	Special Repairs to Sawi Masjid at Multan.	850	850	..	..	
Lahore	Nawankot	Conservation of two corner towers and a gateway at Nawankot.	5,381	1,000	..	..	
Do.	Lahore Fort	Grassing lawns in Diwan-i-Am enclosure.	7,891	..	6,591	6,584	Completed.
		TOTAL		33,389	50,190	50,193	



## APPENDIX III—contd.

## (b) EXPENDITURE ON CONSERVATION—contd.

## Frontier Circle, Muhammadan and British Monuments in the Punjab—contd.

District.	Locality.	Name of work and description.	Amount of sanctioned estimate.	Allotment for the year 1930-31.	Total allotment as subsequently modified.	Amount spent during the year.	REMARKS.
1	2	3	4	5	6	7	8
			Rs.	Rs.	Rs.	Rs.	
Lahore . .	Hazuri Bagh .	<i>Special Repairs (non-recurring charges) carried out by the Public Works Department.</i> Replacing the existing oil engine and pump by an electric motor and centrifugal pump.	4,924	1,148	1,148	1,146	
Do. . .	Do. . .	Installing electric motor in place of oil engine for centrifugal pumps, Hazuri Bagh, Lahore.	2,427	..	302	553	
Do. . .	Lahore Fort .	Installing electric lights in pumping station at Old Fort.	84	..	19	18	
Do. . .	Do. . .	Lining the inside of the service reservoir, Old Fort.	1,520	..	1,288	1,264	
		TOTAL . .		1,148	2,757	2,981	
		Add departmental charges at 18 per cent.		207	496	536	
		TOTAL . .		1,355	3,253	3,517	
		<i>Carried out by the Deputy Commissioner, Lahore.</i>					
Lahore . .	Shalamar Garden.	Lowering the grass plots in the 3rd terrace of the Shalamar Garden.	4,107	4,107	4,107	4,053	
		GRAND TOTAL SPECIAL REPAIRS.		38,851	57,550	57,763	
		<i>Annual Repairs (recurring charges) carried out by the Archaeological Department.</i>					
Lahore . .	Lahore . .	Tomb of Ali Mardan Khan . . . .	480	480	430	430	
Do. . .	Do. . .	Sargwala Maqbara . . . . .	9	15	5	5	
Do. . .	Do. . .	Budhu's Tomb . . . . .	75	30	75	75	
Do. . .	Do. . .	Chanburji . . . . .	250	250	267	267	
Do. . .	Nawankot .	Gateway and two corner towers at Nawankot.	250	250	243	243	
Do. . .	Lahore . .	Gulabi Bagh Gateway . . . . .	215	200	215	215	
Do. . .	Do. . .	Dai Anga's Tomb . . . . .	90	100	70	70	
Do. . .	Do. . .	Shalamar Garden . . . . .	3,500	3,500	3,064	3,065	
Do. . .	Do. . .	Bodhu-Ka-Awa . . . . .	20	200	45	45	
Do. . .	Do. . .	Three Kos Minars . . . . .	40	60	41	40	
Do. . .	Do. . .	Baradari of Maharaja Sher Singh .	360	180	339	339	
Jullundur .	Nur Mahal .	Gateway and Sarai at Nur Mahal.	46	50	51	51	
Do. . .	Nakodar .	Dakhni Sarai . . . . .	400	400	435	430	
Do. . .	Do. . .	Mughal Bridge near Dakhni Sarai	50	50	55	55	
		Carried over . . . . .		5,765	5,335	5,330	

## APPENDIX III—contd.

## (b) EXPENDITURE ON CONSERVATION—contd.

## Frontier Circle, Muhammadan and British Monuments in the Punjab—contd.

District.	Locality.	Name of work and description.	Amount of sanctioned estimate.	Allotment for the year 1930-31.	Total allotment as subsequently modified.	Amount spent during the year.	REMARKS.
1	2	3	4	5	6	7	8
		Brought forward .	Rs.	Rs. 5,765	Rs. 5,335	Rs. 5,330	
		<i>Annual Repairs (recurring charges) carried out by the Archaeological Department—contd.</i>					
Jullundur	Nakodar	Tombs at Nakodar . . . .	160	160	172	172	
Do.	Do.	Kos Minars . . . . .	50	60	32	32	
Ambala	Ambala	Kos Minars . . . . .	7	10	7	7	
Karnal	Panipat	Kabuli Bagh Mosque . . . .	60	100	157	157	
Do.	Karnal	Old Badshahi Bridge . . . .	35	50	29	29	
Do.	Do.	Gateways of Old Mughal Sarai .	73	100	67	67	
Do.	Panipat	Ibrahim Lodhi's Tomb . . . .	55	30	67	67	
Do.	Thanesar	Pathar Masjid . . . . .	21	21	16	16	
Do.	Do.	Sheikh Chhillie's Tomb . . . .	225	200	224	224	
Do.	Karnal	Kos Minars . . . . .	85	70	68	68	
Do.	Panipat	Obelisk commemorating III Battle of Panipat.	10	10	8	8	
Do.	Do.	Bab-i-Faiz Gate . . . . .	10	50	9	8	
Do.	Kaithal	Brick Baoli near Talao Chhajju Mal.	185	185	179	179	
Ludhiana	Ludhiana	Kos Minars . . . . .	15	15	15	15	
Rohtak	Sonepat	Kos Minars . . . . .	20	150	15	15	
Do.	Do.	Khwaja Khizr's Tomb . . . .	285	150	320	320	
Do.	Mahmud	Shah Jahan's Baoli . . . . .	45	150	42	42	
Gurgaon	Gurgaon	Kos Minars . . . . .	268	200	305	305	
Do.	Do.	Mughal Bridge over Budhanwala Nala.	200	200	190	190	
Gurdaspur	Kalanaur	Takht-i-Akbari . . . . .	20	40	10	10	
Do.	Batala	Shamsher Khan's Tomb . . . .	200	200	185	185	
Hissar	Hissar	Gujri Mahal . . . . .	32	40	31	31	
Do.	Do.	Town Wall . . . . .	200	300	142	142	
Do.	Do.	Lat-Ki-Masjid . . . . .	22	100	19	19	
Do.	Do.	Jahaz Kothi . . . . .	97	100	118	118	
Do.	Do.	Feroze Shah's Palace and Tekhanas.	329	400	349	349	
Do.	Hansi	Barsi Gate . . . . .	100	100	188	188	
Do.	Fatehabad	Lat of Feroze Shah . . . . .	10	10	40	9	
Do.	Do.	Humayun's Mosque . . . . .	100	100	69	69	
Lahore	Lahore	Hozuri Bagh . . . . .	790	400	720	720	
Do.	Do.	Dai Anga's Mosque . . . . .	100	100	112	112	
Do.	Do.	Maharaja Ranjit Singh's Scudh .	300	300	298	298	
Do.	Do.	Qutub-ud-Din Aibak's Tomb . .	5	5	3	3	
		Carried over .		9,871	9,511	9,504	



## APPENDIX III—contd.

## (b) EXPENDITURE ON CONSERVATION—contd.

## Frontier Circle, Muhammadan and British Monuments in the Punjab—contd.

District.	Locality.	Name of work and description.	Amount of sanctioned estimate.	Allotment for the year 1930-31.	Total allotment as subsequently modified.	Amount spent during the year.	REMARKS.
1	2	3	4	5	6	7	8
		Brought forward	Rs.	Rs.	Rs.	Rs.	
		<i>Annual Repairs (recurring charges) carried out by the Archaeological Department—contd.</i>		9,571	9,511	9,504	
Lahore .	Lahore .	Lahore Fort . . . . .	5,829	5,000	6,565	6,547	
Mianwali .	Wanbhachran	Sher Shah's Baoli . . . . .	..	..	12	12	
Sheikhupura .	Sheikhupura .	Hiran Minar and Tank . . . . .	700	700	693	693	
Do. .	Shahdara .	Jahangir's Tomb, Akbari Sarai and Asaf Khan's Tomb.	5,900	5,900	5,694	5,694	
Do. .	Do. .	Nur Jahan's Tomb . . . . .	300	300	299	299	
Do. .	Do. .	Kamran's Barsadari at Ravi . . . . .	200	200	200	199	
Gujrat .	Gujrat .	Akbari Baoli . . . . .	..	100	..	..	
Do. .	Kharian .	Aurangzeb's Baoli . . . . .	132	225	199	199	
Jhelum .	Rohtas .	Rohtas Fort . . . . .	926	800	921	921	
Attock .	Hasan Abdal	Lala Rukh's Tomb . . . . .	243	350	242	242	
Do. .	Do. .	Hakim's Tomb . . . . .	238	30	254	254	
Do. .	Do. .	Lozar Baoli . . . . .	22	125	17	17	
Do. .	Hatti .	Saidan Baoli . . . . .	36	36	37	37	
Do. .	Attock .	Begum-Ki-Sarai . . . . .	263	400	253	253	
Do. .	Pindi. Sulaiman Makhan.	Chitti Baoli . . . . .	104	104	71	71	
Multan .	Multan .	Sawi Masjid . . . . .	50	50	50	50	
Muzaffargarh .	Sitpur .	Tahar Khan Nahar's Tomb . . . . .	175	175	177	176	
Do. .	Do. .	Tahar Khan Nahar's Mosque . . . . .	80	80	80	80	
		TOTAL		24,446	25,275	25,248	
		<i>Annual Repairs (recurring charges) carried out by the Public Works Department.</i>					
Sheikhupura .	Shahdara .	Maintenance of water supply at Jahangir's Tomb.	9,910	8,398	8,398	8,902	
Lahore .	Lahore .	Maintenance of water supply at Hazuri Bagh.	2,834	2,402	2,402	1,921	
Do. .	Do. .	Maintenance of water supply and distribution system, Old Fort, Lahore.	4,288	3,634	3,634	3,449	
Do. .	Do. .	Maintenance of water supply at Shalamar Garden.	3,313	2,808	2,808	2,764	
		TOTAL		17,242	17,242	17,036	
		Add agency charges at 18 per cent.		3,103	3,103	3,066	
		TOTAL		20,345	20,345	20,102	
		GRAND TOTAL ANNUAL REPAIRS.		44,791	45,620	45,350	

APPENDIX III—*contd.*(b) EXPENDITURE ON CONSERVATION—*contd.**Frontier Circle, Muhammadan and British Monuments in the Punjab—concl'd.*

District.	Locality.	Name of work and description.	Amount of sanctioned estimate.	Allotment for the year 1930-31.	Total allotment as subsequently modified.	Amount spent during the year.	REMARKS.
1	2	3	4	5	6	7	8
			Rs.	Rs.	Rs.	Rs.	
		<i>Maintenance of Gardens (recurring charges) Provincial Government Funds.</i>					
Lahore .	Lahore .	Shalamar Gardens . . . .	..	8,846	8,846	7,627	
Do. .	Do. .	Hazuri Bagh . . . .	..	1,400	1,400	1,091	
Sheikhupura .	Shahdara .	Shahdara Gardens . . . .	..	11,280	11,280	9,749	
Do. .	Do. .	Raj Ghat Baradari . . . .	..	500	500	520	
		TOTAL .	..	22,026	22,026	18,987	

## SUMMARY.

	Rs.
Special Repairs carried out by the :—	
Archaeological Department . . . . .	50,193
Public Works Department . . . . .	3,517
Deputy Commissioner, Lahore . . . . .	4,053
Annual Repairs carried out by the :—	
Archaeological Department . . . . .	25,248
Public Works Department . . . . .	20,102
TOTAL .	1,03,113
Maintenance of Gardens (Provincial Funds) . . . . .	18,987
GRAND TOTAL .	1,22,100



## APPENDIX III—contd.

## (b) EXPENDITURE ON CONSERVATION—contd.

## Frontier Circle, North-West Frontier Province.

District.	Locality.	Name of work and description.	Amount of sanctioned estimate.	Allotment for the year 1930-31.	Total allotment as subsequently modified.	Amount spent during the year.	REMARKS.
1	2	3	4	5	6	7	8
		<i>Special Repairs (non-recurring charges) carried out by the Public Works Department.</i>	Rs.	Rs.	Rs.	Rs.	
Hazara .	Shahdaur .	Constructing an enclosure wall round the inscribed rock of Shahdaur, Agror Valley, Hazara District.	2,022	..	..	16	
		Add departmental charges at 24½ per cent.		..	..	4	
		TOTAL .		..	..	20	
		<i>Special Repairs (non-recurring charges) carried out by the Deputy Commissioner, Hazara.</i>					
Hazara .	Bhamala .	Acquisition of land at Bhamala .		1,140	1,140	1,140	
		GRAND TOTAL SPECIAL REPAIRS .		1,140	1,140	1,160	
		<i>Annual Repairs (recurring charges) carried out by the Archaeological Department.</i>					
Peshawar .	Takhti Bahi .	Takhti Bahi Monuments .	598	630	630	603	
Do.	Jamal Garhi .	Jamal Garhi Monuments .	380	380	380	369	
Do.	Peshawar .	Asota .	16	20	20	15	
Do.	Shahbaz Garhi	Shahbaz Garhi Monuments .	32	30	30	27	
Hazara .	Taxila .	Jandial and Lal Chak .	232	337	248	247	
Do.	Do.	Jaulian .	717	726	653	653	
Do.	Do.	Pipplan .	218	222	206	206	
Do.	Do.	Badalpur .	39	52	48	37	
Do.	Do.	Wall of Sirsukh .	32	33	33	32	
Do.	Do.	Hajran .	24	26	26	17	
Do.	Mansehra .	Mansehra Monuments .	20	20	20	12	
Do.	Agror Valley	Enclosure wall around the inscribed rock at Shahdaur.		40	40	10	
		TOTAL .		2,516	2,334	2,228	

## SUMMARY.

Special Repairs carried out by the :—	Rs.
Public Works Department . . . . .	20
Deputy Commissioner, Hazara . . . . .	1,140
Annual Repairs carried out by the :—	
Archaeological Department . . . . .	2,228
TOTAL . . . . .	3,388

## Summary of Expenditure on conservations in the Frontier Circle.

Province.	Total amount spent on Special Repairs.	Total amount spent on Annual Repairs.	Total amount spent on gardens from Provincial Funds.	GRAND TOTAL.
Punjab . . . . .	Rs. 67,763	Rs. 45,350	Rs. 18,987	Rs. 1,22,100
North-West Frontier Province . . . . .	1,160	2,228	..	3,388
TOTAL . . . . .	58,923	47,578	18,987	1,25,488

## APPENDIX III—contd.

## (b) EXPENDITURE ON CONSERVATION—contd.

## Northern Circle, Hindu and Buddhist Monuments.

District.	Locality.	Name of work and description.	Amount of sanctioned estimate.	Allotment for the year 1930-31.	Total allotment as subsequently modified.	Amount spent during the year.	REMARKS.
1	2	3	4	5	6	7	8
		PUNJAB.					
		<i>Special Repairs (non-recurring charges) carried out by other agencies.</i>					
Kangra .	Nurpur	Removal and re-erection of the kitchen inside the Nurpur fort.	..	..	500	500	
		TOTAL SPECIAL REPAIRS	..	..	500	500	
		<i>Special Repairs (non-recurring charges) carried out by the Archaeological Department.</i>					
Kangra .	Maarur .	Special repairs to Rock-cut temples.	959	959	959	936	
Karnal .	Sewan .	Constructing boundary pillars at Theh Polar.	255	255	215	..	
Do. .	Amin .	Constructing boundary pillars at the ancient mound.	36	36	..	..	
Do. .	Do. .	Fixing iron pillars at the ancient mound.	76	..	76	69	
..	..	Registration charges for agreements in respect of Hindu and Buddhist Monuments in the Punjab.	..	50	45	14	
		TOTAL SPECIAL REPAIRS	..	1,300	1,295	1,019	
		GRAND TOTAL SPECIAL REPAIRS	..	1,300	1,795	1,519	
		<i>Annual Repairs (recurring charges) carried out by Archaeological Department.</i>					
Rawalpindi .	Mankiala	Buddhist Tops . . . . .	20	20	20	19	
Do. .	Bhallar	Buddhist Tops . . . . .	20	20	17	17	
Jhelum .	Malot .	Temple and Gateway . . . .	250	300	251	251	
Do. .	Rohtas .	Raja Man Singh's Haveli . .	100	100	100	100	
Do. .	Katas .	Sardar Hari Singh's Haveli .	200	170	204	203	
Do. .	Bhera .	Ancient site . . . . .	25	25	21	21	
Shahpur .	Vijhi .	Ancient site . . . . .	70	60	69	69	
Do. .	Amb .	Ancient temples in the fort .	275	230	295	295	
Gurgaon .	Tughlaqabad	Suraj Kund . . . . .	185	250	177	177	
Karnal .	Thanesar .	Raja Karan ka Qila . . . .	15	30	15	15	
Ratnra .	Kangra .	Kangra fort . . . . .	350	350	361	361	
Do. .	Nurpur .	Temple in the Nurpur fort .	180	240	183	183	
		Carried over	..	1,795	1,713	1,711	



## APPENDIX III—contd.

## (b) EXPENDITURE ON CONSERVATION—contd.

## Northern Circle, Hindu and Buddhist Monuments—contd.

District.	Locality.	Name of work and description.	Amount of sanctioned estimate.	Allotment for the year 1930-31.	Total allotment as subsequently modified.	Amount spent during the year.	REMARKS.
1	2	3	4	5	6	7	8
		Brought forward	Rs.	Rs.	Rs.	Rs.	
		<i>Annual Repairs (recurring charges) carried out by the Archaeological Department—contd.</i>		1,795	1,713	1,711	
Kangra .	Kanhara .	Rock-cut inscription . . . .	7	5	10	10	
Do. .	Pathara .	Rock-cut inscription . . . .	5	5	5	3	
Do. .	Masur .	Rock-cut temples . . . .	175	160	177	176	
Do. .	Baljnath .	Temple . . . . .	78	20	55	55	
Do. .	Bajaura .	Temple of Badeshwar Mahadeo .	30	30	30	30	
Do. .	Naggur .	Temple of Gauri Shankar . . .	10	10	6	5	
Do. .	Dassal .	Temple of Gauri Shankar . . .	10	10	10	9	
Do. .	Kotla .	Kotla fort . . . . .	..	..	20	20	
Do. .	Jagat Sukh .	Miniature stone Siva temple. .	..	..	9	9	
Rawalpindi .	Taxila .	Maintenance of monuments . .	..	6,600	4,835	4,835	
		TOTAL ANNUAL REPAIRS . . . .	..	8,635	6,870	6,863	

## SUMMARY.

	Rs.
Total Special repairs carried out by other agencies . . . . .	500
Total Special repairs carried out by the Archaeological Department . . . . .	1,019
Total Annual repairs carried out by the Archaeological Department . . . . .	6,863
GRAND TOTAL . . . . .	8,382

## APPENDIX A.

(b) EXPENDITURE ON CONSERVATION—*contd.**Northern Circle, Hindu and Buddhist Monuments.*

District.	Locality.	Name of work and description.	Amount of sanctioned estimate.	Allotment for the year 1930-31.	Total allotment as subsequently modified.	Amount spent during the year.	REMARKS.
1	2	3	4	5	6	7	8
			Rs.	Rs.	Rs.	Rs.	
		UNITED PROVINCES.					
		<i>Special Repairs (non-recurring charges) carried out by the Archaeological Department.</i>					
Dehra Dun	Kalsi	Special repairs to Asoka rock edict stone.	133	133	98	97	Completed.
Do.	Lakhamandal	Compensation for Dharamsala demolished by the Archaeological Department.	85	85	85	85	Do.
Banda	Kalinjar	Conservation of monuments inside the fort.	1,882	1,882	1,882	1,845	Do.
Do.	Ramnagar	Clearance of jungle from the ruins of a large Chandella temple.	65	65	65	65	Do.
Do.	Karwi	Conservation of the stone temple in Ganesh Bagh.	26	26	25	25	Do.
Do.	Man	Conservation of (a) two ruined temples near Rithaura and (b) the ruins of a Linga temple near Hatovar.	100	100	100	81	Do.
Do.	Barh-Kotrah.	Conservation of (a) Bhardeul temple, (b) Rikhian Caves and (c) a small temple near Rikhian Caves.	150	150	150	142	Do.
Do.	Lauri	Providing a notice board at the ruins of some Jain temples.	25	25	25	26	Do.
Do.	Kalinjar	Demolition and rebuilding of the roof of the 3rd gateway to the fort.	651	..	651	638	Do.
Allahabad	Garkwa	Conservation of monuments inside the fort.	2,200	2,220	2,045	2,042	Do.
Do.	Kosam	Conservation of a fortress	26	26	26	25	Do.
Do.	Allahabad	Providing notice board at the inscribed Asoka stone pillar inside the fort.	23	23	23	23	Do.
Gonda	Sabeth Maheth	Special repairs to the Buddhist remains.	1,000	1,000	27	..	Do.
Mirzapur	Bijaigarh	Special repairs to fort and monuments inside it.	329	329	327	327	Do.
Do.	Somrath	Special repairs to Siva temple	100	100	102	102	Do.
Jhansi	Marha	Conservation of Chandella temple	65	65	59	59	Do.
		Carried over		6,229	5,690	5,582	



## APPENDIX A—contd.

## (b) EXPENDITURE ON CONSERVATION—contd.

## Northern Circle, Hindu and Buddhist Monuments—contd.

District	Locality.	Name of work and description.	Amount of sanctioned estimate.	Allotment for the year 1930-31.	Total allotment as subsequently modified.	Amount spent during the year.	REMARKS.
1	2	3	4	5	6	7	8
			Rs.	Rs.	Rs.	Rs.	
		Brought forward		6,229	5,690	5,582	
		<i>Special Repairs (non-recurring charges) carried out by the Archaeological Department—contd.</i>					
Jhansi	Lalitpur	Conservation of Bansa Building	45	45	45	44	Completed.
Gorakhpur	Amaoni	Conservation of conical stupa shaped mound.	20	20	20	20	Do.
		Purchase of standard notice boards for Hindu and Buddhist Monuments in the United Provinces.	50	50	50	44	Do.
Hamirpur	Mahoba	Conservation of Alla-ki-Giffi	35	35	35	35	Do.
Do.	Rawatpur	Conservation of a temple	347	347	1	..	
Do.	Paraohari	Conservation of the well	5	5	5	5	Completed.
Do.	Urvara	Conservation of the Chandel temple	535	535	535	348	Do.
		Fee for drafting agreement	32	32	..	..	
		Registration charges for agreements in respect of Hindu and Buddhist Monuments in the United Provinces.	..	300	361	361	
		TOTAL SPECIAL REPAIRS	..	7,618	6,762	6,439	
		<i>Annual repairs (recurring charges) carried out by the Archaeological Department.</i>					
Almora	Dwarahat	A group of temples	156	156	156	155	
Do.	Jageshwar	Temples	130	130	130	120	
Azamgarh	Pukri	Inscribed stone pillar	25	25	27	27	
Dehra Dun	Lakhamandal	Temples	163	163	144	123	
Do.	Kalsi	Asoka Edict stone	37	37	37	37	
Gonda	Sabeth Mahesh	Buddhist remains	500	500	500	485	
Gorakhpur	Kasin	Buddhist remains	200	200	200	194	
Jhansi	Talbehut	Fort	230	230	230	223	
Do.	Dudhai and Chandpur.	Temples	200	200	200	194	
		Carried over		1,641	1,624	1,558	

## APPENDIX A—contd.

## (b) EXPENDITURE ON CONSERVATION—contd.

## Northern Circle, Hindu and Buddhist Monuments—contd.

District.	Locality.	Name of work and description.	Amount of sanctioned estimate.	Allotment for the year 1930-31.	Total allotment as subsequently modified.	Amount spent during the year.	REMARKS.
1	2	3	4	5	6	7	8
		Brought forward	Rs.	Rs.	Rs.	Rs.	
				1,641	1,624	1,558	
		<i>Annual repairs (recurring charges) carried out by the Archaeological Department—contd.</i>					
Jhansi	Deogarh	Antiquities.	260	260	260	230	
Banda	Kalinjar	Fort and monuments inside it	250	250	250	241	
Allahabad	Garhwa	Fort and monuments inside it	490	490	507	506	
Muttra	Brindaban	Radha Ballabh temple	389	389	389	357	
Do.	Do.	Jugal Kishore temple	27	27	27	26	
Do.	Do.	Govind Deo temple	338	338	338	337	
Etah	Soron	Sita Ramji's temple	61	61	61	60	
Hamirpur	Mahoba	Kakramark temple	15	15	15	15	
Do.	Rahilya	Rahilya temple	20	20	20	20	
Do.	Sakura	Jain temple	11	11	11	10	
Do.	Do.	Brahmanical temple	11	11	11	10	
Do.	Akauna	Four Chandella temples and a small masonry tank.	25	25	25	25	
Do.	Makarbai	Makarbai temple	48	48	48	48	
Do.	Sijari	Sijari temple	5	5	5	5	
Benares	Sarnath	Buddhist remains	300	300	300	300	
		TOTAL ANNUAL REPAIRS		3,891	3,891	3,748	

## SUMMARY.

	Rs.
Special repairs carried out by the Archaeological Department	6,439
Annual repairs carried out by the Archaeological Department	3,748
GRAND TOTAL FOR THE UNITED PROVINCES OF AGRA AND OUDH	10,187

## Summary of expenditure in the Northern Circle, Hindu and Buddhist Monuments.

Provinces.	Total amount spent on Special Repairs.	Total amount spent on Annual Repairs.	Grand Total.
1	2	3	4
	Rs.	Rs.	Rs.
Punjab	1,519	6,863	8,382
United Provinces	6,439	3,748	10,187
GRAND TOTAL	7,958	10,611	18,569



## APPENDIX III.

## (b) EXPENDITURE ON CONSERVATION.

## Western Circle.

S. No.	District. (P. W. D.)	Locality.	Name of work and description.	Amount of sanc- tioned estimate.	Allotment for the year 1930-31.	Total allotment as sub- sequently modified.	Amount spent during the year.	REMARKS.
1	2	3	4	5	6	7	8	9
			<i>Works carried out by the Superin- tendent, Archaeological Survey, Western Circle.</i>	Rs.	Rs.	Rs.	Rs.	
			<i>D-1.—Special repairs (non-recur- ring charges).</i>					
1	Poona . .	Poona . .	Shanwar Wada (fort walls) . .	807	450	807	806	Completed.
2	Presidency .	Elephanta .	Caves . . . . .	35,277 (9 esti- mates)	1,000	1,000	980	Work closed.
3	Do . . . .	Do . . . .	Surveying land to be acquired	20	20	20	20	Completed.
4	Thana . .	Bassein . .	Portuguese Remains . . .	24,621 (10 esti- mates)	1,000	2,000	2,000	In progress.
5	Do . . . .	Khunawada .	Caves on Barad Hills . . .	2,526	1,284	884	877	Completed.
6	Do . . . .	Jogeshwari .	Caves . . . . .	11,900	250	250	255	In progress.
7	Poona . .	Karla . . .	Caves (acquisition of land) .	855	..	855	854	Completed.
8	Do . . . .	Junnar . .	Fort on the Shivneri Hill (com- pound wall).	590	590	590	590	Do.
9	Western Circle	Western Circle	Enamelled steel notice boards for monuments.	693	300	700	693	Do.
			TOTAL . . . . .		4,894	7,106	7,075	
			<i>D-2.—Annual repairs (recur- ring charges).</i>					
			Current Repairs to—					
1	Karia and Panesh Mahale.	Sarnal . . .	and maintenance charges for Galteshwar Mahadeo temple.	150	150	150	149	Completed.
2	Thana . .	Bassein . .	and maintenance charges for the Portuguese Remains.	425	425	425	425	Do.
3	Do . . . .	Jogeshwari .	and maintenance charges for the caves.	220	220	220	220	Do.
4	Do . . . .	Khunawada .	the Caves on Barad Hill . .	50	50	50	50	Do.
5	Do . . . .	Mulgaon . .	the Old Hindu temple. . .	25	25	25	25	Do.
6	Ahmednagar.	Ahmednagar .	and maintenance charges for the Faris Bagh Palace.	200	200	175	176	Do.
7	Poona . .	Bhaja . . .	and maintenance charges for the caves.	300	300	300	300	Do.
8	Do . . . .	Karla . . .	and maintenance charges for the caves.	1,250	1,250	1,275	1,276	Do.
9	Do . . . .	Junnar . .	and maintenance charges for the Shivneri Fort and Caves.	500	500	500	500	Do.
10	Do . . . .	Do . . . .	and maintenance charges for the Tuljalena group of Caves.	240	240	240	240	Do.
			Carried over . . . . .		3,360	3,360	3,361	

## APPENDIX III—contd.

## (b) EXPENDITURE ON CONSERVATION—contd.

## Western Circle—contd.

No.	District. (P. W. D.)	Locality.	Name of work and description.	Amount of sanc- tioned estimate.	Allotment for the year 1930-31.	Total allotment as sub- sequently modified.	Amount spent during the year.	REMARKS.
1	2	3	4	5	6	7	8	9
			Brought forward .	Rs.	Rs.	Rs.	Rs.	
			Works carried out by the Superintendent, Archaeologi- cal Survey, Western Circle— contd.		3,360	3,360	3,361	
			D-2.—Annual Charges (recur- ring charges)—contd.					
11	Poona .	Junnar .	Current Repairs to— and maintenance charges for the Bhimashankar, Ambika and Bhutnath group of caves.	300	300	300	300	Completed.
12	Do. .	Do. .	and maintenance charges for the Ganesh Lena group of caves.	280	280	280	280	Do.
13	Do. .	Do. .	Habshi Gumbaz .	70	70	70	70	Do.
14	Do. .	Naneghat .	and maintenance charges for the Brahmanical caves.	60	60	60	60	Do.
15	Do. .	Poona .	and maintenance charges for the Pataleshwar Caves at Bhamburda.	275	275	275	274	Do.
16	Do. .	Do. .	Kotwal's residence .	30	30	30	30	Do.
17	Do. .	Do. .	and maintenance charges for the Shanwar Wada, Poona City.	1,200	1,200	1,200	1,200	Do.
			TOTAL .	..	5,575	5,575	5,575	
			Works carried out by the Public Works Department. D-1.—Special repairs (non-re- curring charges).					
1	Kaira & Panch Mahals.	Champaner .	Conserving certain monuments (15).	1,05,223	5,000	8,412	8,412	In progress.
2	Do. .	Do. .	Gabal Shah's well (culvert) .	6,361	1,134	1,134	1,134	Completed.
3	Do. .	Do. .	Gates on Pavaged Hill .	5,055	1,361	1,361	1,361	Do.
4	Do. .	Do. .	Panch Mahuda-ki-Masjid .	427	427	427	427	Do.
5	Do. .	Do. .	Nagina Masjid .	3,921	3,412	..	..	Cancelled.
6	Do. .	Do. .	Lila Gumbaz-ki-masjid (Re- moving dhabra from covered passage in front).	158	158	158	158	Completed.
7	Do. .	Kankanpur .	Mahadeo's temple (preliminary repairs).	2,345	477	477	477	Do.
8	Do. .	Do. .	Mahadeo's temple (removal of tamarind tree).	53	..	53	53	Do.
9	Ahmedabad .	Ahmedabad .	Rajpur gate .	155	155	155	155	Do.
10	Do. .	Do. .	Ahmed Shah's mosque (pro- viding 1" meter for the garden).	155	..	155	135	Do.
11	Do. .	Viramgam .	Mansar Tank .	24,965	1,948	1,948	1,947	Do.
12	Do. .	Ranpur .	Azamkhan's Palace .	347	..	347	340	Do.
13	Do. .	Do. .	Azamkhan's Palace (dema- rating boundaries).	21	..	21	18	Do.
			Carried over .	..	14,072	14,649	14,617	



## APPENDIX III—contd.

## (b) EXPENDITURE ON CONSERVATION—contd.

## Western Circle—contd.

No.	District. (P. W. D.)	Locality.	Name of work and description.	Amount of sanc- tioned estimate.	Budget Allotment for the year 1939-31.	Total allotment as sub- sequently modified.	Amount spent during the year.	REMARKS.
1	2	3	4	5	6	7	8	9
			Brought forward		Rs. 14,073	Rs. 14,649	Rs. 14,617	
			Works carried out by the Public Works Department—contd.					
			D-1.—Special Repairs (non- recurring charges)—contd.					
14	Ahmedabad	Vatwa	Tombs	3,850	3,850	3,850	3,845	Completed.
15	Do.	Dholka	Balolkhan Quazi's mosque (removing debris, etc.).	312	..	312	312	Do.
16	Do.	Kochrab-Paldi	Small stone mosque	147	..	147	147	Do.
17	Do.	Ahmedabad	Providing stands for enamelled notice boards.	151	..	151	149	Do.
18	Do.	Do.	Ditto	141	..	141	141	Do.
19	Do.	Do.	Queen's mosque at Sarangpur	913	651	..	..	Work closed.
20	Presidency	Elephanta	Caves (stone steps)	1,415	1,490	1,490	1,400	Completed.
21	Thana	Mandapeswar	Caves	4,521	4,521	..	..	
22	Do.	Alibagh	Fort	180	180	180	180	Completed.
23	Sholapur	Velapur	Viragal stones (removal of)	41	41	41	38	Do.
24	Do.	Mahalung	Hemadpanti temple of Mahadev.	470	470	..	..	
25	Do.	Do.	Mahadev stones	40	40	..	..	
26	Do.	Do.	Covered colonnades	560	560	..	..	
27	Do.	Begampur	Begam's Mahal	20,550	10,000	2,700	2,690	In progress.
28	Khandesh	Vaghali.	Mudhai Devi temple (im- provements).	1,593	1,593	..	..	
29	Do.	Patan	Maheshwar Mahadev Temple	1,177	1,177	1,177	1,177	Completed.
30	Do.	Vaghali.	Mudhai Devi's Temple	248	248	248	248	Do.
31	Thalner	Thalner	Muhammadan Tombs	9,833	..	1,000	1,590	In progress.
32	Poona	Visapur	Fort (Preliminary repairs)	502	502	502	490	Completed.
33	Do.	Bedas	Caves	1,873	625	625	621	In progress.
34	Nasik	Ankai	Caves (clearance of debris)	460	..	460	455	Completed.
35	Ahmednagar	Toka	Temples of Shiv, Devi and ghats.	200	200	200	199	Do.
36	Kanara	Bilgi	Small deserted temple	60	60	60	60	Do.
37	Dharwar	Badami	Ancient walls, moat and moat walls (Removing cactus).	616	259	259	255	Do.
38	Do.	Bevoor	Rameshwar Temple	1,351	332	315	314	Do.
39	Do.	Aiholli	Charanthi math	87	87	60	60	Do.
40	Do.	Hangal	Tarkeshwar Temple	1,443	196	196	189	Do.
41	Do.	Naregal	Sarveshwar temple	621	458	618	618	Do.
42	Do.	Pattadkal	Dolmens	29	29	20	16	Do.
43	Do.	Badami	Banshankari Tank (clearing weeds.)	545	..	94	73	In progress.
44	Belgaum	Bijapur.	Gol Gumbaz (filling cracks).	8,573	1,006	1,006	1,006	Completed.
			Carried over	..	42,549	31,071	30,890	

## APPENDIX III—contd.

## (b) EXPENDITURE ON CONSERVATION—contd.

## Western Circle—contd.

No.	District (P. W. D.)	Locality.	Name of work and description.	Amount of sanc- tioned estimate.	Allotment for the year 1930-31.	Total allotment as sub- sequently modified.	Amount spent during the year.	REMARKS.
1	2	3	4	5	6	7	8	9
			Brought forward		42,549	31,071	30,890	
			<i>Works carried out by the Public Works Department—contd.</i>					
			<i>D-I.—Special Repairs (non- recurring charges)—contd.</i>					
45	Belgaum	Bijapur	Asar Mahal . . . . .	1,420	470	314	314	Completed.
46	Do.	Do.	Sikandar Adil Shah's tomb (treatment of area).	2,551	180	180	178	Do.
47	Do.	Do.	Mulla mosque (compound wall)	1,034	559	99	99	In progress.
48	Do.	Do.	Taj Bavdi . . . . .	855	..	855	853	Completed.
49	Do.	Do.	Mangoli gate (fallen portion of bastion).	469	99	99	99	Do.
50	Do.	Do.	City walls and moats (cutting cactus from Malik Maidan Gun bastion to Bahmini gate).	782	782	782	782	Do.
51	Do.	Do.	City wall and Bahmini gate	1,462	1,462	1,462	1,462	Do.
52	Do.	Do.	Rantling tank, dam and pavil- lion.	1,105	1,105	1,105	1,105	Do.
53	Do.	Do.	Jod Gumbaz (compound wall)	4,149	..	2,663	2,662	In progress.
54	Do.	Do.	Fixing notice boards to certain protected ancient monuments in Bijapur.	133	..	133	124	Completed.
55	Do.	Do.	City walls (rebuilding of fallen portion near Jorapur gate).	1,366	1,366	1,366	1,366	Do.
56	Do.	Torvi	Nari Mahal . . . . .	4,940	2,365	2,365	2,365	Do.
57	Do.	Do.	Sangit Mahal (excavating a Karanja).	8,044	2,007	5,327	5,321	Do.
58	Do.	Navraspur	Nari Mahal (removing debris).	1,275	1,395	1,273	1,269	Do.
59	Do.	Ainapur	Begum's Mahal (excavating drain).	730	385	460	460	Do.
60	Do.	Ibrahimpur	Mosque and small well . . .	300	300	300	300	Do.
61	Ratnagiri	Malwan	Vijayadurg fort . . . . .	22,121	11,355	14,323	14,019	In progress.
62	Do.	Nagothna	Mohammadan Bridge (Rebuild- ing minaret).	192	192	192	188	Completed.
63	Do.	Raigad	Shivaji's Samadhi (retaining wall).	4,805	60	60	60	Do.
64	Fuleli Canals	Gaja Head	Buddhist Stupa . . . . .	244	250	250	250	Do.
65	Karachi Canals	Tatta	Tombs on Makli hills . . .	1,764	664	653	653	Do.
66	Hyderabad Canals.	Hyderabad	Gulam Nabi Kalhora's tomb .	3,607	3,607	2,722	2,687	Do.
			TOTAL		71,652	68,054	67,500	



## APPENDIX III—contd.

## (b) EXPENDITURE ON CONSERVATION—contd.

## Western Circle—contd.

Serial No.	District.	Locality.	Name of work and description.	Amount of sanctioned estimate.	Budget allotment for the year 1930-31.	Total allotment as subsequently modified.	Amount spent during the year.	REMARKS.
1	2	3	4	5	6	7	8	9
			<i>D-2.—Annual repairs and maintenance (recurring charges) Works carried out by the Public Works Department.</i>					
1	Ahmedabad	Ahmedabad	Maintaining establishment for the upkeep of monuments in the Ahmedabad Division.	1,608	1,608	1,608	1,608	Completed.
2	Do.	Do.	Maintaining a garden in Ahmedabad's mosque.	407	407	407	407	Do.
3	Do.	Do.	Maintenance charges for a garden in Siddi Sayad's mosque.	204	204	204	204	Do.
			Current repairs to—					
4	Do.	Do.	Ahmedshah's mosque . .	30	30	30	30	Do.
5	Do.	Do.	Bava Loli's mosque . .	45	45	45	45	Do.
6	Do.	Do.	Dada Harir's well . .	193	193	193	193	Do.
7	Do.	Do.	Dada Harir's tombs and mosque.	30	30	30	30	Do.
8	Do.	Do.	Dutch tombs near Kankaria tank.	65	65	65	65	Do.
9	Do.	Do.	Inlets to Kankaria tank .	80	80	80	80	Do.
10	Do.	Do.	Mahafiz Khan's mosque .	20	20	20	20	Do.
11	Do.	Do.	Sidi Sayad's mosque . .	25	25	25	25	Do.
12	Do.	Do.	Teen Darwaja . . .	70	70	70	70	Do.
13	Do.	Do.	Bhadar Tower . . .	100	100	100	100	Do.
14	Do.	Do.	Miyan Khan Jahan's mosque	60	60	60	60	Do.
15	Do.	Do.	Brick minars on Railway Station.	150	150	150	150	Do.
16	Do.	Do.	Tomb of Mir Abu Turab .	60	60	60	60	Do.
17	Do.	Do.	Futti masjid . . .	100	100	100	100	Do.
18	Do.	Do.	Queen's mosque in Sarangpur	50	50	50	50	Do.
19	Do.	Vatwa	Tombs . . .	160	160	160	160	Do.
20	Do.	Dholka	Paloi Khan Quazi's mosque	100	100	100	100	Do.
21	Do.	Do.	Khan masjid . . .	66	60	60	57	Do.
22	Do.	Do.	Malay tank . . .	70	70	70	70	Do.
23	Do.	Do.	Khan tank . . .	70	70	70	70	Do.
24	Do.	Adalaj	Stepped well . . .	90	90	90	89	Do.
25	Do.	Koehrab Paldi	Small stone mosque . .	50	50	50	48	Do.
26	Do.	Waana	Rosa of Azam Khan . .	50	50	50	50	Do.
27	Do.	Virangam	Mansar tank . . .	70	70	70	70	Do.
28	Do.	Isanpur	Small stone mosque to south of Malik Isan-ul-Mulk's tomb.	50	50	50	50	Do.
			Carried over . .		4,067	4,067	4,061	

## APPENDIX III—contd.

## (b) EXPENDITURE ON CONSERVATION—contd.

## Western Circle—contd.

Serial No.	District.	Locality.	Name of work and description.	Amount of sanctioned estimate.	Budget allotment for the year 1930-31.	Total allotment as subsequently modified.	Amount spent during the year.	REMARKS.
1	2	3	4	5	6	7	8	9
				Rs.	Rs.	Rs.	Rs.	
			Brought forward		4,067	4,067	4,061	
			<i>D-2.—Annual repairs and maintenance (recurring charges) works carried out by the Public Works Department—contd.</i>					
			BENGAL—contd.					
			Current repairs to—					
29	Ahmedabad	Usmanpur	Sayad Usman's tomb and mosque.	50	50	50	50	Completed.
30	Kaira and Panch Mahals.	Champaner	Maintaining establishment for the upkeep of monuments.	948	948	948	946	Do.
31	Do	Do.	Current repair to Citadel wall.	196	125	125	125	Do.
32	Do.	Do.	Tomb near Panch Mahudaki masjid.	5	5	5	5	Do.
33	Do.	Do.	Sakar Khan's Darga near Pata-Roza.	14	14	14	14	Do.
34	Do.	Do.	Gabal Shah's well	15	15	15	15	Do.
35	Do.	Do.	Helical stepped well	8	8	8	8	Do.
36	Do.	Do.	Tomb with big dome and 4 smaller ones at corners near Wada Talao.	5	5	5	5	Do.
37	Do.	Do.	City walls of south-east corner of citadel.	5	5	5	5	Do.
38	Do.	Do.	Bava Man's mosque	25	25	25	25	Do.
39	Do.	Do.	Gate No. 1 with 2 gateways	13	13	13	13	Do.
40	Do.	Do.	Gate No. 2 with 3 gateways.	22	22	22	22	Do.
41	Do.	Do.	Gate No. 3	5	5	5	5	Do.
42	Do.	Do.	Sat Manzil	15	15	15	15	Do.
43	Do.	Do.	Gate No. 6 near Makai Kothar.	4	4	4	4	Do.
44	Do.	Do.	Makai Kothar	15	15	15	15	Do.
45	Do.	Do.	Gate No. 7	5	5	5	5	Do.
46	Do.	Do.	Gate No. 8	7	7	7	7	Do.
47	Do.	Do.	Naviakha Kothar	16	16	16	16	Do.
48	Do.	Do.	Old temple of Mahadeva in Chasia Talao.	20	..	20	20	Do.
49	Do.	Do.	Palace of Patai Raval	20	..	20	20	Do.
50	Do.	Do.	Panch Mahudaki Masjid	15	15	15	15	Do.
51	Do.	Do.	Ek-minarki masjid	19	19	19	19	Do.
52	Do.	Do.	Halol gateway	16	16	16	16	Do.
53	Do.	Do.	Boraki masjid	16	16	16	16	Do.
54	Do.	Do.	Mandvi	10	10	10	10	Do.
			Carried over			5,445	5,485	5,477



APPENDIX III—*contd.*(b) EXPENDITURE ON CONSERVATION—*contd.*Western Circle—*contd.*

Serial No.	District.	Locality.	Name of work and description.	Amount of sanctioned estimate.	Budget allotment for the year 1939-31.	Total allotment as subsequently modified.	Amount spent during the year.	REMARKS.
1	2	3	4	5	6	7	8	9
			Brought forward .	Rs.	Rs.	Rs.	Rs.	
					5,445	5,485	5,477	
			<i>D-2.—Annual repairs and maintenance (recurring charges) works carried out by the Public Works Department—contd.</i>					
			Current repairs to—					
55	Kaira and Mahals—	Champaner .	Godhra gateway . . .	6	6	6	6	Completed.
56	Do.	Do.	Jami masjid . . .	100	100	100	98	Do.
57	Do.	Do.	Kevda masjid . . .	41	41	41	41	Do.
58	Do.	Do.	Two brick minars . . .	60	60	60	60	Do.
59	Do.	Do.	Nagina masjid . . .	30	30	30	29	Do.
60	Do.	Do.	Lila Gumbaz . . .	50	50	50	50	Do.
61	Do.	Do.	Kamani Masjid . . .	15	15	15	15	Do.
62	Do.	Do.	Khajuri masjid . . .	13	13	13	13	Do.
63	Do.	Do.	Gate No. 4 on Pavagad hill	107	107	107	106	Do.
64	Do.	Kankanpur .	Mahadeva's temple . . .	25	25	25	25	Do.
65	Do.	Ratanpur .	Old Mahadeva's temple .	20	20	20	20	Do.
66	Do.	Kapadwanj .	Kund . . .	31	31	31	31	Do.
67	Do.	Sojani . . .	Tomb of Saifuddin and Nizamuddin Mubarak.	120	120	120	120	Do.
68	Do.	Mehamadabad	Rhamaria well . . .	50	50	50	50	Do.
69	Do.	Borsad . . .	Stepped well . . .	50	50	50	50	Do.
70	Presidency	Elephanta (Gharapuri).	and maintenance charges for the Caves.	3,000	3,000	3,000	2,999	Do.
71	Do.	Sion . . .	the Fort . . .	380	380	380	380	Do.
72	Thana	Ambarnath .	the Temple . . .	35	35	35	35	Do.
73	Do.	Mahuli . . .	Fort . . .	80	80	80	80	Do.
74	Do.	Palsonala .	Brahmanical caves . . .	15	15	15	15	Do.
75	Do.	Arnala . . .	Fort . . .	60	60	60	60	Do.
76	Do.	Kanheri . . .	Caves . . .	300	300	300	297	Do.
77	Do.	Kondivata .	Caves . . .	50	50	50	50	Do.
78	Do.	Mandpeshwar	Caves . . .	100	100	100	99	Do.
79	Do.	Bandra . . .	Fort . . .	40	40	40	40	Do.
80	Do.	Ambivali . .	Caves . . .	60	60	60	60	Do.
81	Do.	Korlai . . .	Old fort . . .	75	75	75	75	Do.
82	Do.	Alibag . . .	Kolaba fort . . .	175	175	175	175	Do.
83	Do.	Do. . . . .	Hirakot fort . . .	50	50	50	50	Do.
84	Do.	Peth . . . .	Korlai fort . . .	75	75	75	75	Do.
			Carried over		10,688	10,698	10,681	

## APPENDIX III—contd.

## (b) EXPENDITURE ON CONSERVATION—contd.

## Western Circle—contd.

Serial No.	District.	Locality.	Name of work and description.	Amount of sanctioned estimate.	Budget allotment for the year 1930-31.	Total allotment as subsequently modified.	Amount spent during the year.	REMARKS.
1	2	3	4	5	6	7	8	9
			Brought forward	Rs.	Rs.	Rs.	Rs.	
					10,658	10,698	10,681	
			<i>D-2.—Annual repairs and maintenance (recurring charges) Works carried out by the Public Works Department—contd.</i>					
			Current repairs to—					
85	Thana	Rev danda (chow).	and maintenance charges for the Portuguese and Mahomedan Remains.	300	300	300	300	Completed.
86	Do.	Rev danda (Agarkot).	Portuguese Remains	368	368	368	368	Do.
87	Do.	Kondane	Caves	114	114	114	114	Do.
88	Surat and Broach.	Surat	and maintenance charges for the English Cemetery.	239	239	239	239	Do.
89	Do.	Do.	and maintenance charges for the Dutch and Armenian cemeteries.	255	255	255	255	Do.
90	Do.	Broach	Jami masjid	160	160	160	160	Do.
91	Sholapur	Sholapur	and maintenance charges for the Fort.	525	525	525	525	Do.
92	Do.	Velapur	Double shired temple	170	170	170	159	Do.
93	Do.	Do.	Old temple of Mahadeo by road side.	69	69	69	61	Do.
94	Do.	Do.	Gateway and old temple of Maruti with virgal stones.	40	40	40	37	Do.
95	Do.	Do.	Old temple in Sarkarvada, locally known as Parsenath temple.	128	128	128	124	Do.
96	Do.	Mahalung	Mahadev stones	20	20	20	10	Do.
97	Do.	Do.	Hemadpanti well	115	115	115	105	Do.
98	Do.	Do.	Covered colonnades	64	64	64	54	Do.
99	Do.	Begampur	Begam's tomb	160	160	..	..	..
100	Satara	Karanja	Brick column erected by the Emperor Aurangzeb.	10	10	10	10	Completed.
101	Do.	Jakhinwadi	and maintenance charges for the Buddhist Caves.	260	260	260	258	Do.
102	Poona	Lohogarb	Fort	160	160	160	158	Do.
103	Do.	Visapur	Fort	110	110	110	109	Do.
104	Do.	Rajmachi	Fort	140	140	140	140	Do.
105	Do.	Shelarvadi	Caves	110	110	110	106	Do.
106	Do.	Bedsa	Caves	160	160	160	156	Do.
107	Do.	Tulapur	Vishnu Vallabheshwar temple	60	60	60	59	Do.
108	Do.	Fulgaon	Peahwa's Ghats	80	80	80	80	Do.
			Carried over		14,475	14,355	14,268	



## APPENDIX III—contd.

## (b) EXPENDITURE ON CONSERVATION—contd.

## Western Circle—contd.

Serial No.	District.	Locality.	Name of work and description.	Amount of sanctioned estimate.	Budget allotment for the year 1930-31.	Total allotment as subsequently modified.	Amount spent during the year.	REMARKS.
1	2	3	4	5	6	7	8	9
			Brought forward .	Rs.	Rs.	Rs.	Rs.	
					14,475	14,355	14,268	
			D-2.—Annual repairs and maintenance (recurring charges) Works carried out by the Public Works Department—contd.					
			Current repairs to—					
109	Poona .	Koregaon .	Monument. . . . .	50	50	50	49	Completed.
110	Do. .	Tulapur .	Mahadeo's Temple with ghat . . . . .	50	50	50	49	Do.
111	Do. .	Do. .	Sangameshwar Temple with ghat. . . . .	100	100	100	98	Do.
112	Do. .	Khed .	Dilawarkhan's tomb with masjid. . . . .	80	80	80	75	Do.
113	Do. .	Do. .	Old dam . . . . .	50	50	50	50	Do.
114	Mutha Canal	Singarh .	Fort . . . . .	100	100	100	100	Do.
115	Khandesh .	Bahana .	and maintenance charges for the temples. . . . .	300	300	300	300	Do.
116	Do. .	Thalner .	Muhammadan tombs . . . . .	126	126	126	126	Do.
117	Do. .	Changdeo .	Temple of Changdev . . . . .	100	100	100	86	Do.
118	Do. .	Erandol .	Pandawas Wada (Masjid) . . . . .	100	100	100	99	Do.
119	Do. .	Patan .	Temple of Maheshwar Mahadeo. . . . .	40	40	40	40	Do.
120	Do. .	Do. .	Shringar Chawdi, Sita's Wah-ahli, and Nagarjuna Caves. . . . .	100	100	100	100	Do.
121	Do. .	Vaghali .	Mudhai Devi temple . . . . .	50	50	50	50	Do.
122	Do. .	Do. .	Siddheshwar temple . . . . .	42	40	40	40	Do.
123	Do. .	Sangameshwar	Old temple of Mahadeva . . . . .	50	50	50	50	Do.
124	Do. .	Dighi .	Temple of Devi and Sambha . . . . .	40	40	40	40	Do.
125	Nasik .	Nasik .	and maintenance charges for the Pandulena Caves. . . . .	350	350	350	348	Do.
126	Do. .	Ankai .	and maintenance charges for the Caves. . . . .	325	325	325	325	Do.
127	Do. .	Sinnar .	and maintenance charges for the Gondewara temple. . . . .	300	300	300	299	Do.
128	Do. .	Do. .	Aishwar temple . . . . .	60	60	60	56	Do.
129	Do. .	Anjeneri .	and maintenance charges for the Anjeneri temples. . . . .	317	317	317	304	Do.
130	Do. .	Jhodga .	Hemadpanti temple of Man-keshwar. . . . .	75	75	75	75	Do.
131	Do. .	Ambeegaon .	Shiva temple . . . . .	70	70	70	70	Do.
132	Do. .	Deothan .	Mahadeo temple . . . . .	25	25	25	25	Do.
133	Nasik Irriga-tion.	Kokamthan .	Old temple . . . . .	60	60	60	57	Do.
134	Ahmednagar .	Ahmednagar .	Nizam Ahmedshah's tomb . . . . .	50	50	50	48	Do.
135	Do. .	Do. .	Tomb near Changis Khan's Palace. . . . .	16	16	16	14	Do.
			Carried over . . . . .		17,499	17,379	17,241	

## APPENDIX III—contd.

## (b) EXPENDITURE ON CONSERVATION—contd.

## Western Circle—contd.

Serial No.	District.	Locality.	Name of work and description.	Amount of sanctioned estimate.	Budget allotment for the year 1930-31.	Total allotment as subsequently modified.	Amount spent during the year.	REMARKS.
1	2	3	4	5	6	7	8	9
			Brought forward	Ra.	Ra.	Ra.	Ra.	
					17,499	17,379	17,241	
			D-2.—Annual repairs and maintenance (recurring charges) Works carried out by the Public Works Department—contd.					
			Current repairs to—					
136	Ahmednagar	Ahmednagar	Gate near Niyamat Khan's tomb	5	5	5	5	Completed.
137	Do.	Do.	and maintenance charges for Salabat Khan's tomb.	212	212	212	208	Do.
138	Do.	Do.	Damri masjid	20	20	20	18	Do.
139	Do.	Tisgaon	Five stone gates	65	65	65	65	Do.
140	Do.	Toka	Five ghats and Shiv, Devi and Vishnu temples.	50	50	50	49	Do.
141	Do.	Mandavgan Karjat.	Devi Temple	28	28	28	28	Do.
142	Do.	Do.	Malikarjun's temple at Karjat	45	45	45	45	Do.
143	Do.	Do.	Nakatiche Deul	40	40	40	40	Do.
144	Do.	Pedgaon	Babaleshwar temple	45	45	45	45	Do.
145	Do.	Do.	Laxminarayan's temple	28	28	28	28	Do.
146	Do.	Takli Dhoke-shwar.	Caves	30	30	30	30	Do.
147	Kanara	Bilgi	the small deserted temple dedicated to Shiva.	10	10	10	10	Do.
148	Do.	Gerasappa	Chaturmukha Basti	35	35	35	35	Do.
149	Do.	Do.	Veerabhadra temple	15	15	15	15	Do.
150	Do.	Do.	Vardhaman Swami's temple	15	15	15	15	Do.
151	Do.	Do.	Inscription stones	3	3	3	3	Do.
152	Do.	Sonda	Temple close to the south of King's seat.	10	10	10	10	Do.
153	Do.	Do.	King's seat	15	15	15	15	Do.
154	Do.	Somsagar	Temple of Shiva	10	10	10	10	Do.
155	Do.	Mirjan	Fort	35	35	35	34	Do.
156	Do.	Bhatkal	Jattapa Naikan Chandra Natheswar Basti.	10	10	10	10	Do.
157	Do.	Kumta	Figure of a tiger opposite English school.	3	3	3	3	Do.
158	Do.	Mirjan	Inscription and the figure of a tiger in the compound of the District Bungalow.	7	7	7	6	Do.
159	Do.	Kumta	Tomb on the right side of Manki Kumta road.	6	6	6	6	Do.
160	Ratnagiri	Raigadh Fort	Shri Shivaji's samadhi and Mahadeo's temple.	400	400	400	400	Do.
161	Do.	Pala	Caves	40	40	40	40	Do.
			Carried over		18,681	18,561	18,414	



## APPENDIX III—contd.

## (b) EXPENDITURE ON CONSERVATION—contd.

## Western Circle—contd.

Serial No.	District.	Locality.	Name of work and description.	Amount of sanctioned estimate.	Budget allotment for the year 1930-31.	Total allotment as subsequently modified.	Amount spent during the year.	REMARKS.
1	2	3	4	5	6	7	8	9
			Brought forward	Rs.	Rs.	Rs.	Rs.	
					18,681	18,561	18,414	
			D-2.—Annual repairs and maintenance (recurring charges) Works carried out by the Public Works Department—contd.					
			Current repairs to—					
162	Ratnagiri	Kuda .	Caves . . . . .	80	80	80	45	Completed.
163	Do.	Nagothna .	Old Mahomedan Bridge . . . . .	100	100	100	100	Do.
164	Do.	Dabhol .	the mosque . . . . .	200	200	200	200	Do.
165	Do.	Harnai .	Suvarnadurg fort . . . . .	150	150	150	150	Do.
166	Do.	Jaigad .	Fort wall . . . . .	150	150	150	149	Do.
167	Do.	Vizaidurg .	Fort wall . . . . .	480	480	480	456	Do.
168	Do.	Malwan .	Sindhudurga fort . . . . .	240	240	240	239	Do.
169	Dharwar	Dharwar .	Two fort gates . . . . .	25	25	25	25	Do.
170	Do.	Havuri .	Sidheshwar temple . . . . .	20	20	20	20	Do.
171	Do.	Balambid .	Rameshwar temple . . . . .	15	15	15	14	Do.
172	Do.	Do.	Kalmeshwar temple . . . . .	15	15	15	15	Do.
173	Do.	Naregal .	Sarveshwar temple . . . . .	25	25	25	25	Do.
174	Do.	Hangal .	Tarkeshwar temple . . . . .	22	22	22	22	Do.
175	Do.	Do.	Old ruined temple between Fort and tank.	7	7	7	7	Do.
176	Do.	Do.	Virabhadra temple . . . . .	17	17	17	17	Do.
177	Do.	Retgiri .	Viragal (Mallaraya Katti) . . . . .	30	30	30	30	Do.
178	Do.	Chowadanpur	Mukteshwar temple . . . . .	25	25	25	23	Do.
179	Do.	Haralhalli .	Somsagar temple . . . . .	30	30	30	30	Do.
180	Do.	Galagnath .	Galgeshwar temple . . . . .	32	32	32	31	Do.
181	Do.	Bankapur .	Nagareswar temple . . . . .	40	40	40	40	Do.
182	Do.	Rattihalli .	Kadambeshwar temple . . . . .	25	25	25	23	Do.
183	Do.	Hangal .	Establishment charges for the upkeep of Archaeological Buildings.	168	168	168	168	Do.
184	Do.	Gadag .	the Someswar temple . . . . .	10	10	10	10	Do.
185	Do.	Do.	the Saraswati temple . . . . .	10	10	10	10	Do.
186	Do.	Dambal .	the Someswar temple . . . . .	15	15	15	15	Do.
187	Do.	Do.	the Dodd Basvanna's temple . . . . .	15	15	15	15	Do.
188	Do.	Lakhundi .	the Kumbhargiri temple . . . . .	24	24	24	24	Do.
189	Do.	Do.	the Naneswar temple . . . . .	15	15	15	16	Do.
190	Do.	Do.	Jain Basti . . . . .	15	15	15	16	Do.
191	Do.	Do.	Kashi Visheshwar temple . . . . .	25	25	25	25	Do.
192	Do.	Do.	Maskinbhavi well . . . . .	30	30	30	28	Do.
			Carried over		20,706	20,586	20,472	

## APPENDIX III—contd.

## (b) EXPENDITURE ON CONSERVATION—contd.

## Western Circle—contd.

Serial No.	District.	Locality.	Name of work and description.	Amount of sanctioned estimate.	Budget allotment for the year 1930-31.	Total allotment as subsequently modified.	Amount spent during the year.	REMARKS.
1	2	3	4	5	6	7	8	9
			Brought forward	Rs.	Rs.	Rs.	Rs.	
					20,706	20,586	20,402	
			<i>D-2.—Annual repairs and maintenance (recurring charges) Works carried out by the Public Works Department—contd.</i>					
			Current repairs to—					
193	Dharwar	Lakhundi	Mankeshwar temple	15	15	15	15	Completed
194	Do.	Do.	Nagnath temple	23	23	23	21	Do.
195	Do.	Unkal	four porched temple	28	28	28	28	Do.
196	Do.	Tambur	Basavanna temple	30	30	30	30	Do.
197	Do.	Deogaon	Old Jain temple	69	69	69	69	Do.
198	Do.	Nandgad	Old Jain temple with fine carvings.	10	10	10	10	Do.
199	Do.	Sampgaon	Jumma Masjid	20	20	3	3	Do.
200	Do.	Badami	group of monuments	100	100	100	96	Do.
201	Do.	Banabankari	Ditto	60	60	60	59	Do.
202	Do.	Nagral	Nagnath temple	90	90	90	85	Do.
203	Do.	Pattadkal	Temples	50	50	50	50	Do.
204	Do.	Aiholi	Temples	200	200	200	199	Do.
205	Do.	Amingad	Old gateway	20	20	20	20	Do.
206	Do.	Hallur	Old Jain temple on the top of a hill	50	50	50	46	Do.
207	Do.	Bevoor	Kalikabhavani Temple	35	35	35	33	Do.
208	Do.	Badami, Pattadkal and Aiholi.	Establishment charges for the upkeep of Archaeological Buildings in the Bagalkot Sub Division.	840	840	840	840	Do.
209	Do.	Annigeri	Current repairs to—the Amritahwar Temple	35	35	35	35	Do.
210	Do.	Amargol	Shankaralinga temple	30	30	30	30	Do.
211	Belgaum	Bijapur	Maintaining establishment for general upkeep of monuments.	5,232	5,232	5,232	5,174	Do.
212	Do.	Do.	Current repairs to—the Gol Gumbaz	500	500	500	499	Do.
213	Do.	Do.	water towers of ancient water supply.	100	100	100	99	Do.
214	Do.	Do.	tomb of Pir Shaik Hamid Kadri.	50	50	50	50	Do.
215	Do.	Do.	Karimuddin's mosque	50	50	50	50	Do.
216	Do.	Do.	Gagan Mahal	100	100	100	99	Do.
217	Do.	Do.	Old mosque No. 294	50	50	50	50	Do.
218	Do.	Do.	Chanda Bavdi	100	100	100	99	Do.
			Carried over		28,593	28,456	28,191	



APPENDIX III—*contd.*(b) EXPENDITURE ON CONSERVATION—*contd.*Western Circle—*contd.*

Serial No.	District.	Locality.	Name of work and description.	Amount of sanctioned estimate.	Budget allotment for the year 1930-31.	Total allotment as subsequently modified.	Amount spent during the year.	REMARKS.
1	2	3	4	5	6	7	8	9
			Brought forward	Rs.	Rs.	Rs.	Rs.	
					28,593	28,456	28,191	
			<i>D-2.—Annual repairs and maintenance (recurring charges) Works carried out by the Public Works Department—contd.</i>					
			Current repairs to—					
219	Belgaum	Bijapur	Jod Gumbaz . . . .	50	50	50	50	Completed.
220	Do.	Do.	Kamarki Gumbaz . . . .	100	100	100	99	Do.
221	Do.	Do.	Chotta Asar Mosque . . . .	50	50	50	50	Do.
222	Do.	Do.	Now Gumbaz . . . .	50	50	50	49	Do.
223	Do.	Torvi	Sangit and Nari Mahal . . . .	100	100	100	100	Do.
224	Do.	Ibrahimpur	Well and mosque . . . .	100	100	100	100	Do.
225	Do.	Bijapur	Jumma Masjid . . . .	100	100	100	100	Do.
226	Do.	Do.	Asar Mahal . . . .	150	150	150	150	Do.
227	Do.	Do.	Ibrahim Roza . . . .	100	100	100	100	Do.
228	Do.	Do.	City walls and gates and bastion containing guns.	200	200	200	200	Do.
229	Do.	Do.	Small masjid over regulator dam to the south of Afzul-khan's wife's tomb.	50	50	..	..	..
230	Do.	Do.	Upli (Hyderi) Buruj . . . .	50	50	50	50	Completed.
231	Do.	Do.	Dekkani Idga . . . .	50	50	50	50	Do.
232	Do.	Do.	Gamat Baydi . . . .	50	50	50	50	Do.
233	Do.	Do.	Taj Baydi . . . .	50	80	50	50	Do.
234	Do.	Do.	Usaff Old Jami Masjid . . . .	100	100	100	100	Do.
235	Do.	Do.	Sikandar Shah's tomb . . . .	50	50	50	50	Do.
236	Do.	Do.	Zamrud Masjid . . . .	50	50	50	50	Do.
237	Do.	Ainapur	Begam's Mahal and Ain-ul-mulk's tomb.	60	60	60	60	Do.
238	Do.	Kumatgi	Pavillon . . . .	40	40	40	40	Do.
239	Do.	Belgaum Fort	Safa Masjid . . . .	30	30	30	30	Do.
240	Do.	Do.	Old Jain temple on the corner of the Commissariat Store yard in the Fort.	46	46	46	46	Do.
241	Do.	Do.	Old Hindu temple near barrack No. 1 in the fort.	30	30	30	30	Do.
242	Do.	Do.	Old Jain temple near Barrack No. 4 in Fort.	42	42	42	42	Do.
243	Do.	Do.	Maintenance charges for Archaeological Buildings in the Fort at Belgaum.	180	180	180	180	Do.
			Current repairs to—					
244	Fulgi Canals	Tando	to the Buddhist stupa at Gaja Head.	19	19	19	19	Do.
			Carried over		30,490	30,303	30,036	

APPENDIX III—*contd.*EXPENDITURE ON CONSERVATION—*contd.*Western Circle—*conold.*

Serial No.	District.	Locality.	Name of work and description.	Amount of sanctioned estimate.	Budget allotment for the year 1930-31.	Total allotment as subsequently modified.	Amount spent during the year.	REMARKS.
1	2	3	4	5	6	7	8	9
			Brought forward	Ra.	Ra.	Ra.	Ra.	
					30,490	30,303	30,036	
			<i>D-2—Annual repairs and maintenance (recurring charges) Works carried out by the Public Works Department—conold.</i>					
			Current repairs to—					
245	Nasrat Canals	Thul	Buddhist stupa . . . .	28	28	28	16	Completed.
246	Do.	Daulatpur	Nurmahomed Kalhora's tomb	123	123	123	104	Do.
247	Do.	Shahpur	Kuba Mir Shahdad . . . .	39	39	39	34	Do.
248	Hyderabad Canals	Hyderabad	Surfrax Khan Kalhora's tomb	200	200	200	200	Do.
249	Do.	Do.	Ghulam Shah Kalhora's tomb	200	200	200	200	Do.
250	Do.	Do.	Ghulam Nabi Kalhora's tomb	200	200	200	200	Do.
251	Do.	Do.	Mir's Harem in Fort . . . .	25	25	25	25	Do.
252	Northern Jamrao Canal.	Alpurkhas	Buddhist stupa . . . .	50	50	50	50	Do.
253	Do.	Dalor	and maintenance charges for Brahmra-ka-thul.	180	180	180	180	Do.
254	Shikarpur Canal.	Bohri	the Satyan-jo-than . . . .	130	130	130	118	Do.
255	Karachi Canal	Makli Hills near Tatta.	and maintenance charges for the monuments.	685	685	685	651	Do.
256	Do.	Tatta	Jumma Masjid . . . .	180	180	180	180	Do.
257	Do.	Do.	Dabgir Masjid . . . .	105	105	105	107	Do.
258	Western Nara	Khudabad	and maintenance charges for Jumma Masjid.	220	220	220	219	Do.
259	Do.	Do.	and maintenance charges for Yar Mahomed's tomb.	234	234	234	232	Do.
260	Mithrao Remodelling.	Naokot	the fort . . . .	75	75	75	67	Do.
261	Khijro Canal	Umarkot	the fort wall . . . .	150	150	150	143	Do.
262	Do.	Bodesar	mosque . . . .	150	150	150	150	Do.
263	Do.	Do.	Jain temple . . . .	150	150	150	149	Do.
264	Do.	Virawah	Jain temple . . . .	125	125	36		
			TOTAL		33,739	33,463	33,061	

## SUMMARY.

	Ra.
Special repairs carried out by the—	7,075
(a) Archaeological Department . . . . .	91,260
(b) Public Works Department . . . . .	
Annual repairs carried out by the—	5,075
(a) Archaeological Department . . . . .	44,698
(b) Public Works Department . . . . .	1,48,608



## APPENDIX III—contd.

## EXPENDITURE ON CONSERVATION—contd.

## Central Circle.

District.	Locality.	Name of work and description.	Amount of sanctioned estimate.	Allotment for the year 1930-31.	Total allotment as subsequently modified.	Amount spent during the year.	REMARKS.
1	2	3	4	5	6	7	8
		BIHAR AND ORISSA.	Rs.	Rs.	Rs.	Rs.	
		D-1 (a) (i) <i>Special Repairs (non-recurring charges) carried out by the Public Works Department.</i>					
Santal Pargannas.	Rajmahal	Preservation of ancient monuments.	4,458	2,498	2,498	2,490	In progress.
Patna	Rajgir	Son Bhandar cave	9	11	9	9	Completed.
Do.	Do.	Clearance of the enclosure of the inscribed pathway (Shell inscription).	108	88	58	53	Do.
Do.	Do.	Preservation and protection of ancient monuments.	4,853	Nil	30	12	Do.
Do.	Kumrahar	Provision of boundary pillars around the land acquired by the Archaeological Department.	139	139	139	132	Do.
Do.	Bankipur	Notice board attached to Gola	17	Nil	17	16	Do.
Shahabad	Sasaram	Revised estimate to ancient tombs and monuments.	6,143	1,870	1,870	1,871	Do.
Do.	Do.	Asoka inscription on Chandan Shahid Hill.	27	27	27	25	Do.
Do.	Do.	Certain repair to Hasan Shah and Alawal Khan's tomb.	877	136	345	336	In progress.
Do.	Arrah	Arrah House	144 738	144	507	450	Do.
Do.	Ramgarh	Providing lightening conductor to Mundeshwari temple.	835	835	535	426	Do.
Do.	Chainpur	Bakhtiar Khan's tomb	305	300	Nil	Nil	Not commenced.
Champaran	Kesariya	Protecting the base of Buddhist stupas.	1,480	1,004	304	271	In progress.
Palamau	Palamau	Palamau Fort	3,116	3,116	1,000	1,000	Do.
Cuttack	Cuttack	Barabati Fort	1,001	923	923	629	Completed.
Do.	Jaipur	Providing shelter over the Colossal images in the compound of the Civil Sub-Divisional Officer's residence.	2,090	2,779	2,089	1,312	In progress.
Puri	Bhubaneswar.	Raja Rani temple	117	80	95	80	Do.
Do.	Puri	Atharanalla bridge	867	406	406	390	Do.
Shahabad	Rohtas	Rohtas Fort (less urgent works)	17,219 5,783 3,347 1,716	2,133	2,057	2,057	Completed.
		TOTAL			12,909	11,559	
		Add—Agency Charges at 23 per cent.			2,069	2,659	
		TOTAL SPECIAL REPAIRS			15,878	14,218	

## APPENDIX III—contd.

## EXPENDITURE ON CONSERVATION—contd.

## Central Circle—contd.

District.	Locality.	Name of work and description.	Amount of sanctioned estimate.	Allotment for the year 1930-31.	Total allotment as subsequently modified.	Amount spent during the year.	REMARKS.
1	2	3	4	5	6	7	8
			Rs.	Rs.	Rs.	Rs.	
		BIHAR AND ORISSA—contd.					
		D-1 (a) (ii) <i>Special Repairs (non-recurring charges) carried out by the Archaeological Superintendent.</i>					
Patna . .	Nalanda .	Conservation of excavated remains (D-1).	..	5,000	5,000	4,997	
		TOTAL .			5,000	4,997	
		(a) (iii) <i>Acquisition carried out by Revenue Department (non-recurring charges).</i>					
Champaran .	Kesariya .	Acquisition of land around the Buddhist stupas.	985	985	985	..	
		TOTAL .			985	4,997	
		GRAND TOTAL .			21,863	19,215	
		D-2 (b) (i) <i>Annual Repairs (recurring charges) carried out by the Public Works Department.</i>					
Patna . .	Bihar . .	Syed Ibrahim's tomb . . . .	28	30	28	21	Completed.
Do. . . .	Rajgir . .	Manyar Matha . . . . .	19	20	19	16	Do.
Do. . . .	Do. . . .	Jain temple . . . . .	10	10	10	9	Do.
Do. . . .	Bankipur .	The Gola (Granary) . . . .	39	50	39	31	Do.
Do. . . .	Maner . .	Mukhdum Shah's tomb . . .	234	300	238	196	Do.
Santal Par-ganna .	Hadaf . .	Juma Musjid and bridge . .	104	110	104	84	Do.
Shahabad .	Sassaram .	Sher Shah's tomb . . . . .	299	159	246	241	Do.
				177			
Do. . . .	Do. . . .	Hasan Shah's tomb . . . . .	235	139	200	204	Do.
				115			
Do. . . .	Do. . . .	Alawal Khan's tomb . . . .	213	134	177	178	Do.
				93			
Do. . . .	Rohtas . .	Rohtas Fort . . . . .	977	833	470	422	Do.
Do. . . .	Ramgarh .	Mundeshwari temple . . . .	25	35	25	28	Do.
Do. . . .	Chainpur .	Bukhtiar Khan's tomb . . .	108	108	98	108	Do.
Do. . . .	Katkauli .	Tombs of Ghulam Haider Khan and Shuja Quli Khan.	6	6	6	10	Do.
Do. . . .	Arrah . .	Arrah House . . . . .	120	188	132	120	Do.
Gaya . . .	Shams her-nagar.	Shams her Khan's tomb . . .	23	48	23	16	Do.
Do. . . .	Ghinjan . .	Budha statue shed . . . . .	11	10	10	6	Do.
Do. . . .	Guner . . .	Budha statue shed . . . . .	14	48	14	10	Do.
Do. . . .	Barabar Hills	Barabar Caves . . . . .	35	35	35	24	Do.
		Carried over . . . . .			1,894	1,724	



## APPENDIX III—contd.

## EXPENDITURE ON CONSERVATION—contd.

## Central Circle—contd.

District.	Locality.	Name of work and description.	Amount of sanctioned estimate.	Allotment for the year 1930-31.	Total allotment as subsequently modified.	Amount spent during the year.	REMARKS.
1	2	3	4	5	6	7	8
		Brought forward	Rs.	Rs.	Rs.	Rs.	
					1,894	1,724	
		BIHAR AND ORISSA—contd.					
		D-2 (b) (i) Annual Repairs (recurring charges) carried out by the Public Works Department—contd.					
Burau	Manjhi	Old Fort	20	20	20	13	Completed.
Champaran	Govindganj	Asoka pillar	15	5	5	5	Do.
Do.	Nandagarh	Asoka pillar	20	5	5	1	Do.
Do.	Do.	Vedic burial mounds	15	5	5	5	Do.
Do.	Do.	Ruined fortress	4	4	4	3	Do.
Do.	Rampurva	Asoka pillar	15	6	6	6	Do.
Do.	Chankigarh	Ruined fortress	10	5	5	2	Do.
Do.	Sagardih	Ruined fortress	20	8	8	5	Do.
Do.	Kesariya	Buddhist stupa	80	65	30	30	Do.
Monghyr	Monghyr	Fort gate	200	200	200	200	Do.
Bhagalpur	Colgong	Rock temple	15	15	15	10	Do.
Do.	Patharghatta	Rock sculptures	80	80	80	70	Do.
Palamanu	Palamanu	Palamanu Forts	484	500	484	484	Do.
Cuttack	Cuttack	Barabati Fort	25	30	25	25	Do.
Do.	Do.	Moat wall	50	75	50	50	Do.
Do.	Jajpur	Protected monuments at Jajpur	27	33	33	30	Do.
Puri	Bhubaneswar	Raja Rani temple	70	250	70	9	Do.
Do.	Do.	Khandagiri and Udaigiri caves	223	225	225	191	Do.
Do.	Do.	Inscription at Dhauli Hills	8	10	8	8	Do.
Do.	Konark	Sculpture shed	40	50	50	40	Do.
Do.	Do.	Black Pagoda	400	500	500	435	Do.
Do.	Puri	Atharvanalla bridge	90	100	100	84	Do.
		TOTAL			3,822	3,435	
		Add—Agency Charges at 23 per cent.			879	790	
		TOTAL ANNUAL REPAIRS			4,701	4,225	

APPENDIX III—*contd.*EXPENDITURE ON CONSERVATION—*contd.*Central Circle—*contd.*

District.	Locality.	Name of work and description.	Amount of sanctioned estimate.	Allotment for the year 1930-31.	Total allotment as subsequently modified.	Amount spent during the year.	REMARKS.
1	2	3	4	5	6	7	8
			Rs.	Rs.	Rs.	Rs.	
		BIHAR AND ORISSA— <i>concl.</i>					
		D-2 (b) (ii) Annual Repairs (recurring charges) carried out by the Archaeological Superintendent.					
Shahabad	Arrah	Municipal Tax to Arrah House	..	143	143	143	
		GRAND TOTAL			4,844	4,368	

## SUMMARY.

	Rs.
Special repairs carried out by—	
(1) Public Works Department	14,218
(2) Archaeological Department	4,997
Annual Repairs carried out by—	
(1) Public Works Department	4,225
(2) Archaeological Department	143
	23,583
Deduct contribution of the Bihar and Orissa Government for Special Repairs to Rohtasgarh Fort	1,265
TOTAL BIHAR AND ORISSA	22,318



## APPENDIX III—contd.

## EXPENDITURE ON CONSERVATION—contd.

## Central Circle—contd.

District.	Locality.	Name of work and description.	Amount of sanctioned estimate.	Allotment for the year 1930-31.	Total allotment as subsequently modified.	Amount spent during the year.	REMARKS.
1	2	3	4	5	6	7	8
			Rs.	Rs.	Rs.	Rs.	
		CENTRAL PROVINCES AND BEHAR.					
		D-1 (a) <i>Special Repairs (non-recurring charges) carried out by the Public Works Department.</i>					
Akola . .	Balapur . .	Lower bastion of the fort . . .	4,869	4,869	4,869	4,549	Completed.
Amraoli . .	Lasur . .	Anandeswar temple . . .	3,012	1,929	1,929	1,804	In progress.
Buldana . .	Dhotra . .	Mahadeo temple, 18 miles south of Chikli.	980	500	500	486	Do.
Do. . .	Siudkbed . .	Certain improvements to the Mahadeo temple.	186	150	215	215	Completed.
Balaghat . .	Sonkhar . .	Fortress at Sonkhar . . .	50	50	50	8	Do.
Do. . .	Piparwara . .	Temple at Piparwara . . .	50	50	50	30	Do.
Do. . .	Baihar . .	Temple at Baihar . . .	294	294	294	272	Do.
Chanda . .	Markanda . .	Main temple at Markanda . .	172	172	172	127	Do.
Do. . .	Ballarpur . .	Providing 6" thick terraced floor on the top of the rampart wall and bastion Kanguras at Ballarpur Fort.	249	437	249	243	Do.
Do. . .	Do. . .	Special Repair to the fort wall.	1,214	882	615	577	Do.
Do. . .	Lalpeth . .	Manoliths at Lalpeth . . .	662	538	324	288	Do.
Jabalpur . .	Bheraghat . .	Chausath Jogani Temple . . .	64	64	64	35	Do.
Do. . .	Burgason . .	Somnath temple . . .	233	233	233	117	Do.
Do. . .	Bilheri . .	Vishnu Varaha temple . . .	16	16	16	17	Do.
Demoh . .	Kodal . .	Mahadeo temple . . .	1,082	1,082	1,082	904	Do.
Hoshangabad . .	Pachmarhi . .	Proposed channel to drain off water lodging on the floor of the main cave.	20	20	20	19	Do.
Nimar . .	Mahal Gulara . .	Pitching on the west side of Mahal buildings at Gulara.	892	943	894	838	Do.
Do. . .	Burhanpur . .	Proposed lay out of the enclosure of Shah Shojah's tomb.	696	710	697	665	Do.
Do. . .	Do. . .	Terraced flooring 1½" thick of the Shah Nawaz Khan's tomb.	568	653	568	534	Do.
Seoni . .	Ashta . .	Providing galvanized wire fencing round the Ashta temple.	413	413	413	371	Do.
Chhindwara . .	Deogarh . .	Certain repairs to the fort at Deogarh.	3,246	1,351	1,721	1,663	Do.
Bhandara . .	Padampur near Amgaon . .	Preserving the old scattered remains after collecting them in one place of the building.	45	45	45	35	Do.
Raipur . .	Sirpur . .	Special Repair to the sculpture shed at Sirpur.	392	392	392	338	Do.
		TOTAL . .			15,412	14,225	
		Add—Agency Charges at 30 per cent.			4,624	4,268	
		TOTAL SPECIAL REPAIRS . .			20,036	18,493	

## APPENDIX III—contd.

## EXPENDITURE ON CONSERVATION—contd.

## Central Circle—contd.

District.	Locality.	Name of work and description.	Amount of sanctioned estimate.	Allotment for the year 1930-31.	Total allotment as subsequently modified.	Amount spent during the year.	REMARKS.
1	2	3	4	5	6	7	8
			Rs.	Rs.	Rs.	Rs.	
		CENTRAL PROVINCES AND BERAR —contd.					
		D-2 (b) Annual Repairs (recurring charges) carried out by the Public Works Department.					
Nagpur .	Ramtek	Remains of old shrine on western side of Ramtek Hill.	25	25	25	25	Completed.
Do.	Ghogra Khapa	Temple of Mahadeo . . . . .	10	10	10	10	Do.
Bhandara .	Padampur	Temple . . . . .	5	5	5	5	Do.
Balaghat .	Baihar .	Temple . . . . .	5	5	5	5	Do.
Do.	Lanji .	Fort . . . . .	100	100	85	65	Do.
Chanda .	Chanda	Fort wall . . . . .	500	500	500	500	Do.
Do.	Do.	Temple of Mahadeo near Municipal Office.	6	6	6	6	Do.
Do.	Do.	Gond Raja's tombs . . . . .	230	230	230	229	Do.
Do.	Do.	A small well inside Jatpura gate . . . . .	30	30	30	30	Do.
Do.	Ghugas	Stone cave with an image of Bahram Doo within it and a stone pillar standing in front.	5	5	5	5	Do.
Do.	Ghosri .	Hemadpanthi temple of Mahadeo . . . . .	10	10	10	9	Do.
Do.	Ballarpur	Fort wall . . . . .	50	50	50	48	Do.
Do.	Lalpath	16 monoliths . . . . .	150	150	150	152	Do.
Do.	Bhejageon	Temple of Mahadeo . . . . .	10	10	10	9	Do.
Do.	Churul .	Temple of Keshavnath . . . . .	5	5	5	5	Do.
Do.	Rajgarh	Old temple of Mahadeo . . . . .	20	20	20	19	Do.
Do.	Bhandak	Temple of Chandika Devi . . . . .	15	15	15	8	Do.
Do.	Do.	Stone bridge in a tank . . . . .	3	3	3	Nil.	Do.
Do.	Do.	Baji Rao's cave . . . . .	4	4	4	1	Do.
Do.	Khatora	Remains of Old Fort . . . . .	20	20	20	19	Do.
Do.	Keslabori	Carved figures of Warriors . . . . .	5	5	5	5	Do.
Do.	Neri .	Temple of Mahadeo . . . . .	18	18	18	18	Do.
Do.	Deotak	Asoka slab inscription . . . . .	6	6	6	5	Do.
Do.	Palebaras	An old Hemadpanthi temple . . . . .	10	10	10	10	Do.
Do.	Markanda	Group of temples . . . . .	16	16	16	16	Do.
Do.	Thanegaon	Temple of Mahadeo (large) . . . . .	16	16	16	16	Do.
Do.	Armori	Old temple . . . . .	20	20	20	20	Do.
Do.	Wairagarh	Temple of Bhandareashwar . . . . .	20	20	20	20	Do.
Do.	Chantursi	Group of 20 cromlechs or Kistvans . . . . .	3	3	3	3	Do.
Do.	Mahadwari	Temple of Mahadeo . . . . .	15	15	15	15	Do.
		Carried over . . . . .			1,317	1,276	



## APPENDIX III—contd.

## EXPENDITURE ON CONSERVATION—contd.

## Central Circle—contd.

District.	Locality.	Name of work and description.	Amount of sanctioned estimate.	Allotment for the year 1930-31.	Total allotment as subsequently modified.	Amount spent during the year.	REMARKS.
1	2	3	4	5	6	7	8
		Brought forward .			1,317	1,276	
		CENTRAL PROVINCES AND BERAR—contd.					
		D-2 (b) Annual Repairs (recurring charges) carried out by the Public Works Department—contd.					
Amraoti	Chikalda	Gawilgarh Fort . . . . .	500	500	500	492	Completed.
Do.	Amner	Tomb of Lal Khan with tank in front of it.	150	150	150	130	Do.
Do.	Ellichpur	Monuments of Ellichpur . . . .	325	250	250	209	Do.
Do.	Lasur	Anandewar Temple . . . . .	150	150	150	123	Do.
Yotmal	Lohara	Mahadeo Temple . . . . .	25	25	25	25	Do.
Akola	Barsi Takli	Bhawani Temple . . . . .	50	50	50	35	Do.
Do.	Patur	Caves . . . . .	50	50	50	58	Do.
Do.	Balapur	Fort . . . . .	150	150	150	160	Do.
Do.	Do.	Chhatra near the Dāk Bungalow .	50	50	50	63	Do.
Do.	Narnalla	Narnalla Fort . . . . .	1,375	1,375	1,375	1,342	Do.
Do.	Akola	Hawa Khana or Darbar bastion of the inner fortification.	75	75	75	94	Do.
Do.	Do.	Dahihanda gateway . . . . .	25	25	25	8	Do.
Do.	Do.	Khirkī gate in the outer city wall.	25	25	25	3	Do.
Do.	Do.	S. E. angle bastion of the outer city wall together with 10 yds. of the adjacent wall on each side.	50	50	50	37	Do.
Buldana	Robinkheda	Mosque . . . . .	40	40	40	39	Do.
Do.	Kothali	Two old temples . . . . .	50	50	50	45	Do.
Do.	Lonar	Gaimukh Temples Nos. 1 to 16 .	370	370	370	364	Do.
Do.	Do.	Dharamsala on the west of the town which is partially ruined and locally called Chhatra.	50	50	50	53	Do.
Do.	Do.	Square Kund on the east of the town.	50	50	50	44	Do.
Do.	Dhotra	Three old temples . . . . .	100	100	100	90	Do.
Do.	Sategaon	Old temple of Vishnu . . . . .	50	50	50	50	Do.
Do.	Sakegaon	Old temple of Mahadeo . . . .	40	40	40	39	Do.
Jabulpur	Bheraghat	Chausath Jogini . . . . .	60	60	60	98	Do.
Do.	Garha	Madan Mahal . . . . .	134	134	134	123	Do.
Do.	Panagarh	Vishnu Varaha . . . . .	5	5	5	4	Do.
Do.	Padaria	Rupnath inscription . . . . .	10	10	10	11	Do.
		Carried over .			5,201	5,015	

## APPENDIX III—contd.

## EXPENDITURE ON CONSERVATION—contd.

## Central Circle—contd.

District.	Locality.	Name of work and description.	Amount of sanctioned estimate.	Allotment for the year 1930-31.	Total allotment as subsequently modified.	Amount spent during the year.	REMARKS.
1	2	3	4	5	6	7	8
		Brought forward .	Rs.	Rs.	Rs.	Rs.	
		CENTRAL PROVINCES AND BERAR—contd.			5,201	5,015	
		D-2 (b) Annual Repairs (recurring charges) carried out by the Public Works Department—contd.					
Jubbulpur	Bilhari .	Vishnu Varaha temple . . .	16	16	16	19	Completed.
Do. .	Burgaon .	Temple of Somnath . . .	12	12	12	10	Do.
Do. .	Karitalai	Kacha and Macha . . .	16	14	14	7	Do.
Do. .	Madho Deori	Ruined temple near the sources of the Kiyan river.	60	60	60	11	Do.
Mandla .	Mandla .	Shahburj also known as Satkhanda.	25	25	25	38	Do.
Do. .	Do. .	Temple attached to Shahburj .	100	100	100	88	Do.
Do. .	Chargaon Ryotwari.	Begum Mahal . . .	300	300	300	298	Do.
Do. .	Khaddeori	Siva's temple . . .	75	75	75	73	Do.
Damoh .	Damoh .	Slabs in the Deputy Commissioner's Garden.	5	5	5	Nil.	Do.
Do. .	Nohta .	Temple . . .	25	25	25	22	Do.
Do. .	Singargarh	Fort . . .	150	150	150	155	Do.
Do. .	Rajnagar .	Fort . . .	25	25	25	28	Do.
Do. .	Hatta .	Rangmahal palace . . .	25	25	25	15	Do.
Do. .	Kanorabari	Temple . . .	30	30	30	28	Do.
Do. .	Jatashankar	Fort . . .	30	30	30	34	Do.
Do. .	Raneh .	Matha . . .	25	25	25	30	Do.
Do. .	Kodal .	Old temple . . .	10	10	10	Nil.	Do.
Do. .	Mariadoh	Fort . . .	50	50	50	48	Do.
Do. .	Kundalpur	Flat roofed temple below the hill .	50	50	50	43	Do.
Seoni .	Ashta .	Temple . . .	31	31	31	26	Do.
Narsinghpur	Chowargarh	Temple in the fort . . .	30	30	30	29	Do.
Hoshangabad	Joga .	Old Mughal Fort . . .	272	272	272	273	Do.
Betul .	Khedla	Fort with two fine gateways . .	20	20	20	17	Do.
Hoshangabad	Pachmarhi	Caves . . .	15	15	15	15	Do.
Nimar .	Buzhanpur	Tomb of Shah Shuja . . .	59	59	59	56	Do.
Do. .	Do. .	Tombs of Adil Shah and Nadir Shah.	246	246	246	250	Do.
Do. .	Do. .	Raja-ki-Chhatra . . .	131	131	131	98	Do.
Do. .	Do. .	Bibi-ki-Masjid . . .	203	53	203	201	Do.
		Carried over .			7,235	6,927	



## APPENDIX III—contd.

## EXPENDITURE ON CONSERVATION—contd.

## Central Circle—contd.

District.	Locality.	Name of work and description.	Amount of sanctioned estimate.	Allotment for the year 1930-31.	Total allotment as subsequently modified.	Amount spent during the year.	REMARKS.
1	2	3	4	5	6	7	8
		Brought forward			7,235	6,927	
		CENTRAL PROVINCES AND BEHAR—contd.					
		D-2 (b) Annual Repairs (recurring charges) carried out by the Public Works Department—contd.					
Nimar	Burhanpur	Palace in fort . . . . .	140	140	140	172	Completed.
Do.	Do.	Tomb of Shah Nawaz Khan . . . . .	132	132	109	108	Do.
Do.	Do.	Groynes below the Shah Nawaz Khan's tomb. . . . .	74	201	74	74	Do.
Do.	Do.	Palace with buildings of Mahal Gulara. . . . .	275	275	275	273	Do.
Do.	Astargarh	Mahadeo temple in fort . . . . .	132	132	132	134	Do.
Do.	Do.	Mahadeo temple in village . . . . .	105	105	105	98	Do.
Do.	Do.	Juma Masjid with side rooms and steps. . . . .	157	187	187	153	Do.
Do.	Do.	Inner and outer walls of the fort with gate. . . . .	215	253	253	234	Do.
Do.	Do.	Sat Darwaza . . . . .	38				
Do.	Do.	Tomb of Shah Numan . . . . .	84	84	84	83	Do.
Do.	Do.	Tomb of Shah Gouhar with Compound. . . . .	43	43	43	40	Do.
Do.	Do.	Idgah front wall with open Platform. . . . .	50	40	50	67	Do.
Do.	Do.	Approach road to the fort . . . . .	382	382	382	380	Do.
Chhindwara	Deogarh	Fort . . . . .	143	143	143	148	Do.
Saugor	Eran	Maintenance of Chowkidar for looking after the monuments. . . . .	132	132	132	131	Do.
Do.	Bamora	Temple . . . . .	6	6	6	6	Do.
Do.	Artillery Mess House.	Collection of ancient sculptures . . . . .	5	5	5	5	Do.
Do.	Gachpahra	All structures in or connected with the Mahal (Fort) of the old Dangi Rulers. . . . .	97	97	97	97	Do.
Do.	Dhamoni	Rani Mahal . . . . .	59	59	59	60	Do.
Do.	Rahatgarh	Fort . . . . .	124	124	124	120	Do.
Do.	Deori	Fort . . . . .	35	35	35	35	Do.
Do.	Khimlaa	Tomb of Panch Pire and maintenance of Chowkidar. . . . .	181	181	181	170	Do.
Raipur	Arang	Bhani Deval . . . . .	15	15	15	6	Do.
Do.	Sirpur	Lakshmana temple . . . . .	30	30	30	18	Do.
		Carried over . . . . .			9,866	9,539	

## APPENDIX III—contd.

## EXPENDITURE ON CONSERVATION—contd.

## Central Circle—contd.

District.	Locality.	Name of work and description.	Amount of sanctioned estimate.	Allotment for the year 1930-31.	Total allotment as subsequently modified.	Amount spent during the year.	REMARKS.
1	2	3	4	5	6	7	8
		Brought forward .	Rs.	Rs.	Rs.	Rs.	
		CENTRAL PROVINCES AND BERAR—contd.			9,866	9,539	
		D-2 (b) Annual Repairs (recurring charges) carried out by the Public Works Department—contd.					
Raipur .	Sirpur .	Area round the Sirpur village .	10	75	75	61	Completed.
Do. .	Do. .	A new shelter for sculpture .	65				
Bilaspur.	Janjgir .	The large Vaishnava temple .	20	20	20	18	Do.
Do.	Do. .	Small temple . . . . .	20	20	20	19	Do.
Do.	Pali .	Mahadeo temple . . . . .	20	20	20	23	Do.
Do.	Kharod. .	Brick temple of Savari south of the village.	8	8	8	6	Do.
Do.	Do. .	Brick temple north of the village .	3	3	3	3	Do.
Do.	Do. .	Two inscriptions inside the Lakshman temple.	2	2	2	2	Do.
Do.	Do. .	Very old Surja temple . . .	15	15	15	14	Do.
Do.	Ratanpur .	The doorway built into the ruined wall beside the gateway to the fort and the stones of images lying about within the boundaries of the village.	20	20	20	20	Do.
Do.	Do. .	Kanthi Dewal temple . . .	10	10	10	10	Do.
Do.	Do. .	Moose Khan's Dargah . . .	5	5	5	5	Do.
Do.	Semarsal .	Pali inscription . . . . .	5	5	5	Nil	Do.
Do.	Gatora .	Temple . . . . .	10	10	10	Nil	Do.
Do.	Patgaon .	Temple . . . . .	10	10	10	10	Do.
Do.	Chandarpur .	Temple of Mahadeo . . . .	15	15	15	15	Do.
Do.	Dhanpur .	Rock . . . . .	5	5	5	Nil	Do.
Do.	Bagdera .	Chaiturgarh . . . . .	20	20	20	18	Do.
Do.	New Burgason	Kotgarh Fort . . . . .	20	20	20	10	Do.
Do.	Bhawanbadi .	Kushigarh Fort . . . . .	15	15	15	15	Do.
Do.	Konar .	Konargarh Fort . . . . .	20	20	20	Nil	..
Do.	Sheorinarayan	Chandra Chuda Mahadeo . .	10	10	10	10	Completed.
Do.	Do. .	Ruined temple of Keshava Narayan	20	20	20	22	Do.
Drug .	Deobaloda .	Siva temple . . . . .	20	20	20	20	Do.
		Carried over .			10,234	9,860	



APPENDIX III—*contd.*EXPENDITURE ON CONSERVATION—*contd.**Central Circle—concl.*

District.	Locality.	Name of work and description.	Amount of sanctioned estimate.	Allotment for the year 1930-31.	Total allotment as subsequently modified.	Amount spent during the year.	REMARKS.
1	2	3	4	5	6	7	8
		Brought forward .	Rs.	Rs.	Rs. 10,234	Rs. 9,850	
		CENTRAL PROVINCES AND BEHAR— <i>concl.</i>					
		<i>D-2 (b) Annual Repairs (recurring charges) carried out by the Public Works Department—concl.</i>					
Drug	Gandai	Old temple . . . . .	20	20	20	13	Completed.
Do.	Dhamda	Temple of Shoo on Buddha tank .	10	10	10	7	Do.
Do.	Deorbija	Temple of Sita Devi and Sati pillar.	20	20	20	20	Do.
		TOTAL .			10,234	9,890	
		Add—Agency Charges at 30 per cent.			3,085	2,967	
		TOTAL ANNUAL REPAIRS .			13,369	12,857	

## SUMMARY.

	Rs.
Special repairs carried out by the Public Works Department . . . . .	18,493
Annual Repairs carried out by the Public Works Department . . . . .	12,857
TOTAL CENTRAL PROVINCES AND BEHAR . . . . .	31,350

*Summary of expenditure incurred in the Central Circle.*

Province.	Special Repairs.	Annual Repairs.	TOTAL.
	Rs.	Rs.	Rs.
Bihar and Orissa . . . . .	19,215	4,368	23,583
Central Provinces and Berar . . . . .	18,493	12,857	31,350
GRAND TOTAL . . . . .	37,708	17,225	54,933

## APPENDIX III—contd.

## (b) EXPENDITURE ON CONSERVATION—contd.

## Eastern Circle.

District.	Locality.	Name of work and description.	Amount of sanctioned estimate.	Allotment for the year 1930-31.	Total allotment as subsequently modified.	Amount spent during the year.	REMARKS.
1	2	3	4	5	6	7	8
		BENGAL.	Rs.	Rs.	Rs.	Rs.	
		<i>Special Repairs (non-recurring charges) carried out by the Archaeological Department).</i>					
Rajshahi	Paharpur	Conservation of the temple . .	2,300	2,500	2,500	2,500	In progress.
		TOTAL .		2,500	2,500	2,500	
		<i>Special Repairs (non-recurring charges) carried out by the Public Works Department.</i>					
Bankura	Vishnupur	Acquisition of land for the construction of a retaining wall of the tank near Radha Govind temple.	17	17	17	17	Completed.
Do.	Ghutghoria and Sarengarh.	Cost of execution of agreements in respect of the temples of Damodar Jew and Paresanath.	139	139	139	139	Do.
Burdwan	Garui . .	Special repairs to stone temple . .	7,594	3,606	3,606	2,944	In progress.
Dacca . .	Rampal . .	Law charges in connection with the acquisition of land for Baba dAam's mosque.	100	100	36	12	Completed.
Do. . . .	Do. . . .	Special repairs to Baba Adam's mosque.	4,042	349	349	349	Do.
Hooghly	Tribeni . .	Special repairs to the mosque of Zafar Khan Gazi.	3,060	1,200	1,110	1,105	In progress.
Do. . . .	Do. . . .	Special repairs to the tomb of Zafar Khan Gazi.	1,860	1,860	1,860	1,821	Do.
Khulna . .	Bagerhat . .	Special repairs to Sathgambuz mosque.	9,094	4,000	4,750	4,750	Do.
Malda . .	Gaur . . .	Construction of a shed for a chowkidar and a durwan for the museum at Guntigateway and erection of a pucca enclosure wall for the shed and sinking a 2'-6" diam. cement concrete ring well in the courtyard.	1,958	1,825	1,446	1,299	Do.
Do. . . .	Do. . . .	Acquisition of land for a chowkidar and a durwan for the museum at Guntigateway and erection of a pucca enclosure wall for the shed and sinking a 2'-6" diam. cement concrete ring well in the courtyard.	146	147	147	146	Completed.
Do. . . .	Gour and Pandua.	Earthquake damage repairs to the archaeological building.	253	253	251	251	Do.
Murshidabad .	Khushbagh .	Earthquake damage repairs to the tombs of Siraj-ud-dowla and Aliverdi Khan, including the mausoleum.	71	71	71	69	Do.
Do. . . .	Roshnibagh .	Earthquake damage repairs to the tomb of Sujauddin including the mausoleum and compound wall.	37	37	37	35	Do.
		TOTAL .		13,604	13,819	12,937	
		Agency charges at 25 per cent.		3,300	3,370	3,156	
				16,904	17,189	16,093	



## APPENDIX III—contd.

## EXPENDITURE ON CONSERVATION—contd.

## Eastern Circle—contd.

District.	Locality.	Name of work and description.	Amount of sanctioned estimate.	Allotment for the year 1930-31.	Total allotment as subsequently modified.	Amount spent during the year.	REMARKS.
1	2	3	4	5	6	7	8
		Brought forward	Rs.	Rs.	Rs.	Rs.	
		BENGAL—contd.					
		<i>Annual repairs (recurring charges) carried out by the Public Works Department.</i>					
24 Parganas	Sundarbans	Jatar Deul temple . . . .	150	150	150	146	
Do.	Berachampa	Chandra Ketu's fort . . . .	156	200	200	156	
Murshidabad	Azimnagar	Tomb of Azimunnessa Begum . .	25	25	24	24	
Do.	Faridola	Tomb of Mirmadan . . . .	7	7	7	7	
Do.	Kunjaghata	Tablet of Maharsja Nanda Kumar .	2	2	2	2	
Do.	Kalikapur	Six tombs in the Dutch cemetery .	16	25	16	16	
Do.	Khusbagh	Tombs of Sirajuddowla, Aliverdi Khan, including mausoleum and compound.	336	120	336	336	
Do.	Katra .	Tomb and mosque of Murahid Kuli Khan.	223	208	223	223	
Do.	Kharaul	Mosque . . . . .	172	172	172	172	
Do.	Lalbagh	Tomb of Nowab Sarfarsaj Khan . .	9	10	9	9	
Do.	Roshnibagh	Tomb of Sujauddin including mausoleum and compound.	118	100	118	118	
Do.	Topkhana	Jahan Kosha Gun . . . .	10	10	10	10	
Do.	Rangamati	Raja Karna's palace . . . .	7	7	7	7	
Nadia	Chakdah	Palpara temple . . . . .	40	50	40	40	
Do.	Kaliganj	New Plassy monument . . . .	44	50	43	43	
Do.	Do.	Pillars demarcating the battle field of Plassy.	35	35	35	35	
Do.	Bamanpukur	Ruins of fort . . . . .	44	44	44	44	
Midnapore	Gaganeswar	Karambera fort . . . . .	205	250	205	192	
Bankura	Vishnupur	Nineteen temples . . . . .	792	800	792	791	
Do.	Do.	Dalmadal gun . . . . .	41	50	41	38	
Do.	Do.	Patpur temple . . . . .	131	100	131	125	
Do.	Do.	Stone chariot . . . . .	17	10	17	14	
Do.	Madanpur	Syam Sundar temple . . . .	12	15	12	12	
Do.	Bahulara	Siddheswar temple . . . . .	119	122	119	118	
Do.	Susunia hill	Rock inscription of Raja Chandra Verma.	15	15	15	15	
Do.	Mouza Jagannathpur.	Ratneswar temple . . . . .	10	10	10	10	
Do.	Mouza Ghutghoria.	Radha Damodar Jew temple . .	18	20	18	18	
Hooghly	Serampore	Henry Martine's pagoda . . . .	116	150	112	112	
Do.	Satgaon	Tomb and mosque . . . . .	23	36	23	23	
		Carried over . . . . .		2,793	2,931	2,856	

## APPENDIX III—contd.

## (b) EXPENDITURE ON CONSERVATION—contd.

## Eastern Circle—contd.

District.	Locality.	Name of work and description.	Amount of sanctioned estimate.	Allotment for the year 1930-31.	Total allotment as subsequently modified.	Amount spent during the year.	REMARKS.
1	2	3	4	5	6	7	8
		Brought forward		2,793	2,931	2,856	
		BENGAL—contd.					
		Annual repairs (recurring charges) carried out by the Public Works Department—contd.					
Hooghly	Tribeni	Tomb and mosque of Zafar Khan Gazi.	43	73	43	43	
Do.	Panduah	Minar and mosque	63	100	63	58	
Burdwan	Burdwan	Tomb of Bahram Sakka, Kutbuddin and Sber Afghan.	158	200	158	157	
Do.	Kalna	Two mosques	77	97	77	77	
Do.	Buddipore	Two ancient temples	35	46	35	35	
Do.	Gaurangpur	Ichai Ghosh's temple	43	100	33	33	
Do.	Bantoonarah	Ratheswar Siva temple	49	100	39	39	
Birbhum	Nanoor	Temples	67	100	46	6	
Do.	Kenduli	Jaydev temple	49	150	36	36	
Do.	Suri	Damodar temple.	28	50	25	25	
Do.	Bhadiawar	Mounds	3	9	3	3	
Rajshahi	Bagha	Mosque	209	200	209	200	
Do.	Kusumba	Mosque	156	200	127	127	
Malda	Gaur and Pandua.	Archæological buildings	3,002	3,438	3,002	2,986	
Pabna	Dakshin Ra-ghabpur.	Jore Bangla temple	27	27	27	27	
Dinajpur	Mangalbari	Badal pillar	14	14	14	14	
Do.	Agradigun	Mound	6	6	6	6	
Do.	Bangarh	Ruins of fort	20	20	20	19	
Do.	Mahisantosh	Mosque	14	14	14	14	
Do.	Gangarampur	Dargah of Shah Ata	20	20	20	20	
Rangpur	Ishtailpur	Dargah of Shah Ismail Ghazi	50	50	50	49	
Dacca	Ramna Sub-Division.	Maintenance of a caretaker	144	144	144	144	
Do.	Atoakhana	Khan Muhammad Mirdha's mosque.	156	125	156	154	
Do.	Lalbagh	Old fort	99	120	99	98	
Do.	Do.	Gateway at the south-east corner of the old fort.	33	40	33	33	
Do.	Do.	Bibi Peri's tomb	48	48	48	47	
Do.	Do.	Mosque attached to Bibi Peri's tomb.	41	48	41	41	
Do.	Munshiganj	Remains of Idrakpur fort	35	40	35	35	
Do.	Satmasjid	Satgambuz mosque	73	73	73	72	
		Carried over		8,445	7,607	7,494	



APPENDIX III—*contd.*(b) EXPENDITURE ON CONSERVATION—*contd.*Eastern Circle—*contd.*

District.	Locality.	Name of work and description.	Amount of sanctioned estimate.	Allotment for the year 1930-31.	Total allotment as subsequently modified.	Amount spent during the year.	REMARKS.
1	2	3	4	5	6	7	8
			Rs.	Rs.	Rs.	Rs.	Rs.
		Brought forward .		8,445	7,607	7,494	
		BENGAL— <i>concl.</i>					
		Annual repairs (recurring charges) carried out by the Public Works Department— <i>concl.</i>					
Dacca . .	Magrapara .	Tomb of Ghiyasuddin Azam Shah .	12	20	12	10	
Do. . .	Raghurampur	Tank of Hariachandra . .	3	4	3	3	
Do. . .	Narainganj	Khondkar's masjid . . .	2	4	2	2	
Do. . .	Sabbar . .	Mounds . . . . .	4	4	4	4	
Do. . .	Rampal . .	Mosque of Baba Adam . .	150	160	150	150	
Mymensingh .	Masjidpara .	Aurangzeb mosque . . .	37	25	37	36	
Do. . .	Astogram .	Kutb mosque . . . . .	57	40	57	54	
Do. . .	Agarsindur .	Sach mosque . . . . .	23	23	23	23	
Do. . .	Do. . .	Shah Mahmud mosque . .	40	40	40	40	
Bakarganj .	Masjidbari .	Mosque . . . . .	20	40	20	19	
Kulna . .	Bagerhat .	Shatgambuz mosque . . .	480	600	480	480	
Do. . .	Do. . .	Khan Jehan Ali's tomb . .					
Do. . .	Do. . .	Pir Ali's tomb . . . . .					
Do. . .	Masjidkur .	Khan Jehan Ali's mosque .	240	300	240	240	
Jessore . .	Bharat Bhayana .	Stupa mound . . . . .	76	100	76	75	
		TOTAL . . . . .		9,807	8,751	8,630	
		Agency charges at 15 and 25 per cent.		2,417	2,153	2,127	
				12,224	10,904	10,757	

## SUMMARY.

Special repairs carried out by the—	Rs.
(1) Archaeological Department . . . . .	2,500
(2) Public Works Department . . . . .	16,093
Annual Repairs carried out by the—	
(1) Public Works Department . . . . .	10,757
GRAND TOTAL, BENGAL . . . . .	29,350

## APPENDIX III—contd.

## (b) EXPENDITURE ON CONSERVATION—contd.

## Eastern Circle—contd.

District.	Locality.	Name of work and description.	Amount of sanctioned estimate.	Allotment for the year 1930-31.	Total allotment as subsequently modified.	Amount spent during the year.	REMARKS.
1	2	3	4	5	6	7	8
			Rs.	Rs.	Rs.	Rs.	
		ASSAM.					
		<i>Special repairs (non-recurring charges) carried out by the Public Works Department.</i>					
Darrang	Bishnath	Special repairs to Baradole temple	422	422	422	421	Completed.
Do.	Dah Parbatiya	Providing notice board and a green hedge to the Gupta Temple.	187	183	183	94	In progress.
Sibsagar.	Garhgaon (Nazira).	Special repairs to Ahom Raja's Palace.	1,658	522	827	827	Completed.
Do.	Gaurisagar	Special repairs to Debidole and Bishnudole.	7,658	5,551	2,471	2,422	In progress.
Do.	Jaysagar	Special repairs to Golaghar or magazine.	6,713	1,000	3,000	2,908	Do.
Do.	Do.	Surveying land for proposed diversion of the Local Board road running between the protected temples.	17	17	17	8	Do.
Do.	Do.	Making a diversion of the Local Board road near Bishnudole temple	1,135	500	500	182	In progress.
		TOTAL		8,195	7,420	6,952	
		Tools and plant charges at 1½ per cent.		123	111	104	
				8,318	7,531	7,056	
		<i>Annual repairs (recurring charges) carried out by the Public Works Department.</i>					
Cachar	Rhaspur	Kachari Ruins	280	240	240	255	
Do.	Tulargram	Sivatilla	50	10	10	35	
Do.	Maibong	Rock-cut temple and two inscribed stones.	22	10	10	10	
Do.	North Cachar hills.	Four monolithic groups	200	200	200	48	
Darrang	Bishnath	Baradole temple	78	85	78	78	
Do.	Tezpur	Ruined stone temple on the Bamuni hill.	150	150	150	146	
Do.	Do.	Maintenance of a platform at the Municipal park.	30	30	30	28	
Do.	Dah Parbatiya	Gupta temple	195	195	195	149	
Kamrup.	Kamakhya	Rock inscription at the foot of the Kamakhya hill.	10	10	10	10	
Do.	Gauhati	Inscription on the Urbasi Island	10	10	10	10	
Do.	Do.	Rock Sculpture of Vishnu Janardan	30	30	30	30	
Goalpara	Jogighopa	Two rock-cut caves	20	20	20	12	
Khasi and Jaintia hills.	Syndai	Tank	50	50	50	48	
Do.	Nartiang	Monolith (U. Mawthoh Duf)					
Do.	Bholi Country.	Monolith (U. Mawthoh Dur)					
Naga hills	Dimapur	Ruins	400	400	400	398	
		Carried over		1,440	1,433	1,257	



## APPENDIX III—contd.

## (b) EXPENDITURE ON CONSERVATION—contd.

## Eastern Circle—concld.

District.	Locality.	Name of work and description.	Amount of sanctioned estimate.	Allotment for the year 1930-31.	Total allotment as subsequently modified.	Amount spent during the year.	REMARKS.
1	2	3	4	5	6	7	8
		Brought forward	Rs.	Rs.	Rs.	Rs.	
		ASSAM—contd.		1,440	1,433	1,257	
		Annual repairs (recurring charges) carried out by the Public Works Department—contd.					
Sibsagar.	Kasomari Pathar.	Monolith . . . . .	18	18	18	18	
Do.	Deopani	Image . . . . .	20	20	20	20	
Do.	Harupani	Images . . . . .	14	14	14	14	
Do.	Nigriting	Sibdole temple . . . . .	50	50	50	50	
Do.	Sibsagar	Sibdole, Debidole and Bishnudole temples.	300	300	300	300	
Do.	Gaurisagar	Sibdole, Debidole and Bishnudole temples.	174	150	150	150	
Do.	Jaysagar	Sibdole, Debidole and Bishnudole temples.	300	300	300	300	
Do.	Do.	Rungbar Ruins . . . . .	149	150	149	145	
Do.	Do.	Karangbar Ruins . . . . .	250	250	250	250	
Do.	Do.	Golaghar or magazine . . . . .	110	100	110	98	
Do.	Gorhgaon (Nazira).	Ahom Raja's Palace . . . . .	200	200	200	200	
Eastern Frontier Tract.	Sadiya	Ahom Pillar . . . . .	5	5	5	4	
Sylhet	Badarpur	Old fort . . . . .	38	40	38	40	
Do.	Nirpat Jaintiapur.	Enclosure . . . . .	250	250	250	248	
		TOTAL		3,287	3,287	3,092	
		Tools and plant charges at 1½ per cent.		49	49	48	
				3,336	3,336	3,139	

## SUMMARY.

	Rs.
Special repairs carried out by the Public Works Department . . . . .	7,056
Annual Repairs carried out by the Public Works Department . . . . .	3,138
Establishment Charges . . . . .	5,000
GRAND TOTAL ASSAM	15,194

## Summary of expenditure incurred on conservation in the Eastern Circle.

Province.	Total amount spent on special repairs.	Total amount spent on annual repairs.	Total.
	Rs.	Rs.	Rs.
Bengal.	18,593	10,737	29,330
Assam	7,056	3,138	10,194
Establishment charges	3,461	1,539	5,000
GRAND TOTAL	29,110	15,434	44,544

## APPENDIX III—contd.

## (b) EXPENDITURE ON CONSERVATION—contd.

## Southern Circle.

District.	Locality.	Name of work and description.	Amount of sanctioned estimate.	Allotment for the year 1930-31.	Total allotment as subsequently modified.	Amount spent during the year.	REMARKS.
1	2	3	4	5	6	7	8
			Rs.	Rs.	Rs.	Rs.	
		MADRAS PRESIDENCY.					
		D.I.—Special Repairs of Monuments.					
		(a) Works in Progress.					
Guntur .	Bapatla .	Bhavanarayanasvami temple .	2,130	1,250	1,000	899	Completed.
Anantapur	Gooty .	Rock Fort . . . . .	1,990	650	500	499	
				1,900	1,500	1,398	
		Agency charges at 19 per cent. .		362	285	266	
		TOTAL .		2,262	1,785	1,664	
		(b) New Works.					
Ganjam .	Ganjam .	Ganjam Fort . . . . .	595	..	100	100	Completed.
Kistna .	Masulipatam .	Arsenal and Godowns known as Customs and Port Office at Bandar Fort.	238	200	200	197	Do.
Nellore .	Udayagiri .	Ancient Monuments . . . . .	1,050	882	582	639	
Madras .	Madras .	West Bastion Rooms—Old Town Wall—Improvements.	170	..	170	167	Completed.
Chingleput	Mahabali-puram.	Arjuna's Penance—Construction of a parapet wall in front of.	..	226	..	..	
Chittoor	Gurramkonda	Mahal—Chejja works—special repair to.	1,650	1,000	1,000	436	
Do.	Chandragiri .	Pond attached to the Rani Mahal—Provision of a notice board.	6	12	6	6	Completed.
Do.	Do.	Inspection bungalow . . . . .	50	..	40	39	Do.
Do.	Gurramkonda	Inspection bungalow . . . . .	100	..	100	63	
Bellary .	Timmalapuram	Gopalakrishna temple . . . . .	2,200	500	500	500	
Anantapur	Kambaduru .	Old Siva temple . . . . .	270	100	250	247	
Do.	Penukonda .	Sethutirtham Well with entrance in the form of a bull.	225	255	205	206	Completed.
Do.	Do.	Watch Tower known as Rama's Bastion.	138	116	103	104	Do.
Do.	Do.	The Citadel on the top of the hill .	119	100	94	94	Do.
Do.	Ratnagiri .	Hill Fort, gate and well . . . . .	130	130	80	71	Do.
Salun .	Sankaridrug .	Hill Fort and temple on the hill—clearing slips and repairs to fort walls.	1,260	..	500	475	In Progress.
Malabar	Palghat .	Fort—Special repairs to the 2 rooms in front.	..	200	..	..	Already completed.
		Carried over .		3,721	3,930	3,344	Cont.



APPENDIX III—*contd.*(b) EXPENDITURE ON CONSERVATION—*contd.**Southern Circle—contd.*

District.	Locality.	Name of work and description.	Amount of sanctioned estimate.	Allotment for the year 1930-31.	Total allotment as subsequently modified.	Amount spent during the year.	REMARKS.
1	2	3	4	5	6	7	8
		Brought forward .		Rs. 3,721	Rs. 3,930	Rs. 3,344	
		MADRAS PRESIDENCY— <i>contd.</i>					
		D-1.— <i>Special Repairs of Monuments—contd.</i>					
		(b) New Works— <i>contd.</i>					
Malabar	Palghat	Fort—Removal of water hyacinth for maintaining the moat.	..	..	200	200	
Tanjore .	Tranquebar	Dansborg Castle . . . .	830	..	310	311	Completed.
Do. .	Tanjore	Schwartz Church in the Sivaganga Little Fort.	700	..	33	33	Do.
Tinnevely	Tiruvallisvaram.	Tiruvallisvara temple . . . .	645	640	640	639	Do.
		TOTAL .		4,361	5,113	4,527	
		Agency charges at 19 per cent. .		831	971	860	
		TOTAL OF D-1 (b) .		5,192	6,084	5,387	
		TOTAL SPECIAL REPAIRS .		7,454	7,869	7,051	
		D-2.— <i>Annual Maintenance and Upkeep of Monuments and attached gardens.</i>					
Ganjam	Kottakolla	Gangadara and Jagadesvara temples on Brudhakolla hill—Annual repairs.	60	60	60	60	
Vizagapatam	Ramatirtham	Buddhist remains on Bodikonda hill—Maintenance of watchman and repairs to the watchman's shed.	160 135	200	200	169	
Do. .	Sankaram	Buddhist remains on Bojjana-konda hill—Annual maintenance of watchman.	170	200	170	168	
Kistna .	Bezwada	Akhanna Madanna Caves on the Indrakilla hill.—Repairs to.	6	15	10	10	Completed.
Do. .	Mogalraja-puram.	Rock-cut cave temples on the hill.—Repairs to.	2	2	2	2	Do.
Do. .	Ghantasala	Buddhist remains in a Mound .	10	10	10	8	Do.
Do. .	Masulipatam	Dutch Cemetery . . . .	119	30	90	95	In progress.
Do. .	Do.	Bandar fort—Armoury known as Fort and Customs Office.	60	30	..	..	
Do. .	Do.	Belfry and compound wall in the Bandar Fort.	12	10	..	..	
Do. .	Jaggayyapet	Buddhist remains of a stupa on the hill—Maintenance of a watchman.	180	180	144	144	Completed.
		Carried over .		767	686	653	

## APPENDIX III—contd.

## (b) EXPENDITURE ON CONSERVATION—contd.

## Southern Circle—contd.

District.	Locality.	Name of work and description.	Amount of sanctioned estimate.	Allotment for the year 1930-31.	Total allotment as subsequently modified.	Amount spent during the year.	REMARKS.
1	2	3	4	5	6	7	8
		Brought forward		757	686	653	
		MADRAS PRESIDENCY—contd.					
		D-2.—Annual Maintenance and Upkeep of Monuments and attached gardens—contd.					
Krishna	Gummadi-durru and Alluru.	Mounds containing remains of ancient Buddhist stupa—Maintenance of a watchman.	180	180	144	144	Completed.
West Godavari	Guntapalle	Buddhist caves and monuments—Maintenance of a watchman.	147	147	147	144	Do.
Guntur	Amaravati	Buddhist Stupa—Maintenance of a watchman.	115	115	115	114	Do.
Madras	Madras	Old Town Wall	178	178	178	176	Do.
Do.	Do.	Obelisk in R. S. No. 1697	4	4	4	4	Do.
Do.	Do.	Pillar in R. S. No. 1816	4	4	4	4	Do.
Do.	Tondiarpet	Pillar in R. S. No. 1793	4	4	4	4	Do.
Do.	Washer-manpet.	Slab R. S. No. 1764 fixed on the basement of H-1 Police Station.	4	4	4	4	Do.
Do.	George Town	Tomb of David Yale and Joseph Hymers in the compound of the Law College.	20	20	20	17	Do.
Chingleput	Chingleput	Ther Mahal	160	160	160	160	Do.
Do.	Mahabalipuram.	Conservation of ancient monuments at Seven Pagodas.	287	300	287	288	Do.
Do.	Do.	Maintenance of roads and pathways at Seven Pagodas.	420	500	420	421	Do.
Do.	Do.	Watering young trees at Mahabalipuram in Shore Temple road and Five Rath's road.	286	450	286	286	Do.
Do.	Sadras	Dutch Cemetery and Ruined fort.	45	50	45	45	Do.
Do.	Pulicat	Dutch Cemetery	190	100	190	179	Do.
Anantapur	Gorantla	Madhavaraya temple	..	250	..	..	..
Do.	Lepakshi	Veerabhadra temple	200	150	185	185	Completed.
Do.	Ratnagiri	Hill Fort and gates and well	..	380	..	..	..
Do.	Penukonda	Maintenance of ancient monuments in Penukonda Sub-Division.	150	150	146	146	Completed.
Do.	Do.	Notice boards of ancient monuments in Penukonda—repairs to.	143	120	113	112	Do.
Chittoor	Chandragiri	Inspection Bungalow—Rajah's Mahal.	798	800	770	738	Do.
Do.	Melpadi	Cholesvara temple	150	25	120	121	Do.
Do.	Do.	Somanatha temple	236	50	162	162	Do.
Do.	Gurramkonda	Fort	300	300	300	255	In progress.
		Carried over		5,198	4,490	4,362	



## APPENDIX III—contd.

## (b) EXPENDITURE ON CONSERVATION—contd.

## Southern Circle—contd.

District.	Locality.	Name of work and description.	Amount of sanctioned estimate.	Allotment for the year 1930-31.	Total allotment as subsequently modified.	Amount spent during the year.	REMARKS.
1	2	3	4	5	6	7	8
		Brought forward		5,198	4,490	4,362	
		MADRAS PRESIDENCY—contd.					
		D-2.—Annual Maintenance and Upkeep of Monuments and attached gardens—contd.					
Chittoor	Gurramkonda	Mahal—(Inspection bungalow)	250	225	250	233	Completed.
Do.	Vallimalai	Subramania Temple	105	50	73	73	Do.
Do.	Sompalli	Vishnu temple	35	35	35	28	Do.
Do.	Mangapuram	Venkatesvara temple	30		1	1	Do.
Cuddapah	Candikota	Fort with enclosed buildings	100	100	100	97	Do.
Do.	Poli	Attirala Parnasurama temple	490	500	490	489	Do.
Do.	Nandalur	Soumyanatha temple	275	300	275	274	Do.
Do.	Vontimitta	Kodandarama Temple	115	290	115	114	Do.
Do.	Siddhavattam	Fort with ancient buildings enclosed.	210	200	200	196	Do.
Kurnool	Kurnool	Tomb of Abdul Wahab Khan	50	50	50	44	Do.
Do.	Do.	Gateway Paneki Diddie	225	50	50	50	Do.
Do.	Do.	Bastion No. 1. Beech Ghantiki Burruru.	70	30	70	74	Do.
Do.	Do.	Bastion No. 2. Lal Bungalow Burruru.	15	50	15	15	Do.
Cuddapah	Pushpagiri	Temples on the Hill—Sivae and Kesave svara temple.	178 300	300	100	79 3	Do.
Anantapur	Gooty	Rock Fort—Ordinary repairs	530	590	500	511	Do.
Do.	Kambaduru	Siva temple—Ordinary repairs	195	30	180	178	Do.
Bellary	Hampi Ruins	Employment of watchmen to look after Hampi Ruins.	970	970	957	957	Do.
Do.	Do.	Stone Aqueduct	100	100	100	100	Do.
Do.	Do.	Hazara Ramachandra Temple	415	400	400	400	Do.
Do.	Do.	Guard House near Elephant Stables.	315	300	300	300	Do.
Do.	Do.	Roads and Pathways in Hampi ruins.	540	400	500	500	Do.
Do.	Do.	Malyavantha Raghunatha temple	350	300	300	300	Do.
Do.	Do.	Krishna temple	430	400	413	413	Do.
Do.	Do.	Ranga temple	110	100	100	99	Do.
Do.	Do.	Ruined tank adjoining the Soollai Bazaar.	110	100	100	99	Do.
Do.	Timmala-puram.	Siva and Gopalakrishna temples—Ordinary repairs.	80	75	75	75	Do.
Do.	Bagali	Kaliesvara temple	380	300	300	300	Do.
Do.	Magalam	Suryanarayana temple	59	50	50	50	Do.
		Carried over		11,313	10,589	10,414	

## APPENDIX III—contd.

## (b) EXPENDITURE ON CONSERVATION—contd.

## Southern Circle—contd.

District.	Locality.	Name of work and description.	Amount of sanctioned estimate.	Allotment for the year 1930-31.	Total allotment as subsequently modified.	Amount spent during the year.	REMARKS.
1	2	3	4	5	6	7	8
			Rs.	Rs.	Rs.	Rs.	
		Brought forward		11,313	10,589	10,414	
		MADRAS PRESIDENCY—contd.					
		D-2.—Annual Maintenance and Upkeep of Monuments and attached gardens—contd.					
Bellary	Uchehangidurgam.	Fort . . . . .	76	50	50	50	Completed.
Do.	Rangapuram	Narasimha temple . . . . .	115	75	75	76	Do.
Do.	Hira Hadagalle.	Kaliesvara temple . . . . .	..	100	..	..	
Coimbatore	Mettupudur .	Jain Temple . . . . .	17	20	12	16	Completed.
Do.	Sircar peria-palayam.	Sugrivesvara temple and Tank . .	25	30	30	24	Do.
Do.	Sidda y a n a-puram.	Mahalingesvara temple . . . . .	..	25	25	..	
Do.	Danay a k a n-kottai.	Three temples—Annual repairs . .	100	100	100	100	Completed.
The Nilgiris	Kotagiri .	Group of sculptured dolmens in Banagudishola.	70	70	65	65	Do.
Malabar	Tellicherry .	Fort . . . . .	200	200	200	200	Do.
Do.	Palghat .	Fort . . . . .	500	500	500	500	Do.
Do.	S u l t a n ' s Battery.	Jain Temple . . . . .	32	25	25	20	Do.
Salem .	Krishnagiri .	Hill Fort . . . . .	100	100	100	100	Do.
Do. .	Rayakota .	Hill Fort . . . . .	70	70	70	69	Do.
Do. .	Atur .	Hill Fort . . . . .	250	250	250	236	Do.
Do. .	Sankaridrug .	Hill Fort and temple on the hill .	357	300	300	305	Do.
Do. .	Namakal .	Hill Fort . . . . .	133	135	135	125	Do.
South Kanara.	Bekal .	Fort . . . . .	250	250	250	241	Do.
Do.	Mangalore	Sultan's Battery 3 miles north of Mangalore.	30	30	30	30	Do.
Do.	Do.	Mangala Devi temple, renewal of notice board.	4	..	4	4	Do.
Do.	Bappanad .	Stambha in front of Kotakeri Jain basti—Relettering the notice boards.	15	15	15	13	Do.
Do.	Nada .	Jamalabad Fort . . . . .	250	250	246	246	Do.
Do.	Hiriyangadi .	Great Manastambha . . . . .	15	15	15	14	Do.
North Arcot .	Tirumalai .	Jain rock-cut caves, sculptures, mandapas with paintings and inscriptions (Mallinatha temple).	60	50	50	48	Do.
Do.	Vellore .	Fort—Maintenance of watchmen .	870	700	624	633	Do.
Do.	Do. .	Jalakantesvara temple in the fort.	480	400	332	311	Do.
Do.	Do. .	Old Mosque in the Fort . . . .	50	50	32	32	Do.
		Carried over		15,123	14,124	13,872	



## APPENDIX III—contd.

## (b) EXPENDITURE ON CONSERVATION—contd.

## Southern Circle—contd.

District.	Locality.	Name of work and description.	Amount of sanctioned estimate.	Allotment for the year 1930-31.	Total allotment as subsequently modified.	Amount spent during the year.	REMARKS.
1	2	3	4	5	6	7	8
		Brought forward	Rs.	Rs.	Rs.	Rs.	
		MADRAS PRESIDENCY—contd.		15,123	14,124	13,872	
		D-2.—Annual Maintenance and Upkeep of Monuments and attached gardens—contd.					
North Arcot	Arcot	Delhi Gate	256	215	211	212	Completed.
Do.	Do.	Masjid and 2 ponds to the west of the Citadel.	226	238	190	184	Do.
Do.	Velappakkam	Rock-cut caves and sculptures, Panthapandavamalai.	60	42	..	..	
Do.	Siyysamangalam.	Rock-cut temples and sculptures	88	238	74	70	Completed.
Do.	Wandiwash	Fort	500	238	420	389	In progress.
Do.	Sholinghur	Rock inscriptions in the right flank of Sholinghur tank.	110	70	92	89	Completed.
South Arcot	Gingee	Gingee Fort and buildings	1,895	1,895	1,820	1,885	Do.
Do.	Do.	Gingee—Maintenance of watchmen	288	290	290	268	Do.
Tanjore	Negapatam	Dutch Cemetery	150	150	150	150	Do.
Do.	Tanjore	Sivaganga Little Fort—Maintenance of a watchman.	144	144	138	138	Do.
Do.	Tranquebar	Dansborg castle—Repairs	..	423	..	..	
Trichinopoly	Ranjangudi	Ranjangudi Fort—Maintenance of a watchman.	171	138	144	144	Completed.
Madura	Dindigul	Rock-fort buildings—annual maintenance.	300	300	300	305	
Do.	Tiruparankundram.	Rock-cut temple containing inscription on the southern side of the rock.	80	..	80	80	
Anjengo	Anjengo	Old Fort	40	40	40	39	
Do.	Tangasseri	Old Fort	30	30	30	29	
Tinnevely	Adichanallur	Prehistoric remains—Maintenance of a watchman.	108	108	108	108	
Do.	Shermadevi	Baktavatsala temple—repairs	70	70	70	60	
		TOTAL		19,752	18,281	18,022	
		Agency charges at 19 per cent.		3,753	3,473	3,424	
		GRAND TOTAL OF D-2		23,505	21,754	21,446	
		TOTAL EXPENDITURE FOR 1930-31—MADRAS PRESIDENCY.		30,059	29,023	28,497	

## SUMMARY.

Special Repairs carried out by the Public Works Department	Rs.
Annual Repairs carried out by the Public Works Department	7,051
	21,446
TOTAL	28,497

## APPENDIX III—contd.

## (b) EXPENDITURE ON CONSERVATION—contd.

## Southern Circle—contd.

District.	Locality.	Name of work and description.	Amount of sanctioned estimate.	Allotment for the year 1930-31.	Total allotment as subsequently modified.	Amount spent during the year.	REMARKS.
1	2	3	4	5	6	7	8
			Rs.	Rs.	Rs.	Rs.	
		COORG.					
		<i>D-1.—Special Repairs of Monuments.</i>					
		(b) New Works.					
Coorg	Mercara	Fort—Front gateway—Clearing the walls and roof grouting cracks with cement mortar and covering the terrace with Black-wells reinforced roofing.	800	1,000	1,000	678	
		Agency charges at 19 per cent.	..	190	190	128	
		TOTAL	..	1,190	1,190	805	
		<i>D-2.—Annual Maintenance and Upkeep of Monuments and attached gardens.</i>					
Coorg	Mercara	Fort and Raja's seat—Repairs to roads, culverts, drains in the fort and approaches; repairs to masonry elephants and rampart walls, clearing rank vegetation in and around the fort, etc.	300 } 250 }	250	250	218	
Do.	Mullur	Jain temples.—Clearing rank vegetation of roof and grouting cracks with cement, repairs to doors and painting doors, floor and clearing the compound.	50	50	50	45	
		Agency charges at 19 per cent.	..	57	57	50	
		TOTAL	..	357	357	313	

## SUMMARY.

	Rs.
Special Repairs carried out by the Public Works Department . . . . .	805
Annual Repairs carried out by the Public Works Department . . . . .	313
TOTAL . . . . .	1,118

## Summary of expenditure incurred on Conservation in the Southern Circle.

Province.	Special repairs.	Annual repairs.	Total.
	Rs.	Rs.	Rs.
Madras . . . . .	7,051	21,446	28,497
Coorg . . . . .	805	313	1,118
GRAND TOTAL . . . . .	7,856	21,759	29,615



APPENDIX III—*contd.*(b) EXPENDITURE ON CONSERVATION—*contd.*

## Burma Circle.

District.	Locality.	Name of work and description.	Amount of sanctioned estimate.	Allotment for the year 1930-31.	Total allotment as subsequently modified.	Amount spent during the year.	REMARKS.
1	2	3	4	5	6	7	8
			Rs.	Rs.	Rs.	Rs.	
		(a) <i>Special repairs (non-recurring charges) carried out by the Public Works Department.</i>					
Mandalay	Mandalay	Rebuilding Pyatthat No. 44 on the South Wall of Fort Dufferin.	6,602	6,602	6,602	6,215	
Do.	Do.	Restoring the carvings on No. 46 Pyatthat on the South Wall of Fort Dufferin.	1,453	..	1,453	1,385	
Myingyan	Myinpagan	Abeyadana Temple . . .	3,816	3,816	3,816	3,632	
		TOTAL .	..	10,418	11,871	11,232	
		Add 23 per cent. agency charges .	..	2,396	2,714	2,583	
		TOTAL .	..	12,814	14,585	13,815	
		(b) <i>Annual repairs (recurring charges) carried out by the Public Works Department.</i>					
Hanthawaddy.	Syriam	Wages of caretaker and repairs to the Old Portuguese Church.	250	250	250	250	
Prome .	Hmawza	Bawhawgyi Pagoda . . .	300	300	300	298	
Do. .	Do.	Lemyethna Pagoda . . .					
Do. .	Do.	Bebe Pagoda . . .					
Pegu .	Pegu .	Pali stone shed and an old buoy .	40	40	40	..	
Mandalay	Mandalay	Palace buildings . . .	4,000	4,000	4,000	3,875	
Do.	Do.	Pyatthats on the walls of Fort Dufferin.	4,000	4,000	4,000	3,900	
Do.	Do.	Tawgyaung Pagoda . . .	100	100	100	97	
Do.	Do.	Maintenance of the garden on the Palace platform.	3,825	4,065	4,065	3,764	
Do.	Do.	Tomb of King Mindon. . .	300	300	300	271	
Do.	Do.	Tomb of Nanmadawgyi . . .					
Do.	Do.	Tomb of Queen Sinbyumayin .					
Do.	Amarsapura	Tomb of King Bodawpaya . . .					
Do.	Do.	Tomb of King Bagyidaw . . .	100	100	100	100	
Do.	Do.	Tomb of Shwebo Min . . .					
Do.	Do.	Tomb of King Mindon's mother .					
Do.	Do.	Remains of Bodawpaya's Palace .					
Do.	Do.	Taungthaman Kyauktawgyi Pagoda.	745	250	745	744	
Do.	Do.	Wages of Caretaker to the Royal Tombs and the Remains of Bodawpaya's Palace.	180	180	180	179	
		Carried over .		13,585	14,080	13,478	

APPENDIX III—*contd.*(b) EXPENDITURE ON CONSERVATION—*contd.*Burma Circle—*contd.*

District.	Locality.	Name of work and description.	Amount of sanctioned estimate.	Allotment for the year 1930-31.	Total allotment as subsequently modified.	Amount spent during the year.	REMARKS.
1	2	3	4	5	6	7	8
			Rs.	Rs.	Rs.	Rs.	
		Brought forward .		13,585	14,080	13,478	
		(b) Annual repairs (recurring charges) carried out by the Public Works Department— <i>contd.</i>					
Kyaukse	Kalagyaung	Clearing jungles around Nandawye, Let-the and Chanthaya pagodas.	180	180	180	180	
Do.	Ehya	Clearing jungles around Shwezigon Pagoda.					
Do.	Metkaya	Clearing jungles around Shweyaung-daw Pagoda.					
Sagaing	Sagaing	Tupayon Pagoda . . . .	175	175	175	186	
Do.	Do.	Inscription shed near the Tupayon Pagoda.	35	35	35	31	
Do.	Do.	Wages of caretaker to Tupayon Pagoda and inscription shed.	168	168	168	166	
Do.	Ava	Okkyaung and Watch Tower .	155	155	155	142	
Do.	Do.	Wages of caretaker to Okkyaung and Watch Tower.	168	168	168	168	
Do.	Mingun	Tazaung and Bell . . . .	150	150	150	151	
Do.	Do.	Pondawpaya . . . . .	40	40	40	38	
Do.	Do.	Sinbyume Pagoda . . . .	320	320	320	315	
Do.	Do.	Wages of caretaker to Tazaung and Bell, Pondawpaya and Sinbyume Pagoda.	168	168	168	168	
Shwebo	Shwebo	Shed over the inscription stone in the Court House Compound.	20	20	20	20	
Myingyan	Pagan	Wages of durwans looking after pagodas and the Museum.	2,064	2,064	2,064	2,053	
Do.	Nyaungoo	Thetkyamuni Pagoda (Spent) Rs. 280.					
Do.	Do.	Kondawgyi Pagoda (Spent) Rs. 255.					
Do.	Do.	Kyaukku Onhmia or Cave Temple (Spent) Rs. 460.					
Do.	Do.	Sapada Pagoda (Spent) Rs. 60 .					
Do.	Pagan	Tilominlo Temple (Spent) Rs. 51					
Do.	Do.	Upali Thein or Ordination Hall (Spent) Rs. 20.					
Do.	Do.	Mingalazedi Pagoda (Spent) Rs. 222					
		Carried over .		17,228	17,723	17,096	



APPENDIX III—*contd.*(b) EXPENDITURE ON CONSERVATION—*contd.*Barma Circle—*contd.*

District.	Locality.	Name of work and description.	Amount of sanctioned estimate.	Allotment for the year 1930-31.	Total allotment as subsequently modified.	Amount spent during the year.	REMARKS.
1	2	3	4	5	6	7	8
			Rs.	Rs.	Rs.	Rs.	
		Brought forward		17,228	17,723	17,096	
		(b) Annual repairs (recurring charges) carried out by the Public Works Department— <i>contd.</i>					
Myingyan	Pagan	Thatbyinnya Temple (Spent) Rs. 4.					
Do.	Do.	Gawdawpalin Temple (Spent) Rs. 113.					
Do.	Do.	Shinbinthalyaung or Recumbent image of the Buddha within the precincts of the Shwesandaw Pagoda (Spent) Rs. 1,665.					
Do.	Do.	Mi-malaung-gyaung Temple (Spent) Rs. 307.					
Do.	Do.	Two Nat-shrines at the Remains of the Sarabha Gate of the Old city wall of Pagan (Spent) Rs. 80.					
Do.	Do.	Bidagat-Talk or Library (Spent) Rs. 17.					
Do.	Do.	Ngakywe Nadaung Pagoda (Spent) Rs. 3.					
Do.	Do.	Nat-hlaung-gyaung Temple (Spent) Rs. 5.	4,587	4,500	4,500	4,380	
Do.	Do.	Museum (Spent) Rs. 354					
Do.	Minnanthu	Sulamani Temple (Spent) Rs. 59					
Do.	Pwasaw	Damayazika Pagoda (Spent) Rs. 300.					
Do.	Myinpagan	Myinkaba Pagoda (Spent) Rs. 96					
Do.	Do.	Seinnyet Ama Temple (Spent) Rs. 5.					
Do.	Do.	Seinnyet Nyima Temple (Spent) Rs. 5.					
Do.	Do.	Kubyaukkyi Temple (Spent) Rs. 3					
Do.	Thiipyitsaya	Western Petleik Pagoda (Spent) Rs. 3.					
Do.	Do.	Eastern Petleik Pagoda (Spent) Rs. 3.					
Do.	Pagan	Miscellaneous—cost of brooms, etc., for durwans (Spent) Rs. 10.					
		TOTAL		21,728	22,223	21,476	
		Add 23 per cent. agency charges		4,907	5,111	4,939	
		TOTAL		26,725	27,334	26,415	

APPENDIX III—*contd.*(b) EXPENDITURE ON CONSERVATION—*contd.**Burma Circle—concl'd.*

District.	Locality.	Name of work and description.	Amount of sanctioned estimate.	Allotment for the year 1930-31.	Total allotment as subsequently modified.	Amount spent during the year.	REMARKS.
1	2	3	4	5	6	7	8
			Rs.	Rs.	Rs.	Rs.	
		(b) <i>Annual repairs (recurring charges) carried out by the Archaeological Department.</i>					
Mandalay	Mandalay	Maintenance of the Palace, including wages of durwans and sweepers, conservancy, lighting and water taxes, etc.	3,610	3,630	3,630	3,601	
Do.	Amarapura	Wages of caretaker to Taungthaman Kyauktawgyi Temple and the inscription shed near the Patodawgyi Pagoda.	168	168	168	168	
Prome	Hmawza	Wages of durwan looking after the ancient monuments and antiquities.	180	180	180	180	
		TOTAL	..	3,978	3,978	3,949	

## SUMMARY.

	Rs.
Special Repairs carried out by the Public Works Department . . . . .	13,815
Annual Repairs carried out by the Public Works Department . . . . .	26,415
Annual Repairs carried out by the Archaeological Department . . . . .	3,949
GRAND TOTAL	44,179



## APPENDIX III—concl'd.

## (b) EXPENDITURE ON CONSERVATION—concl'd.

## Central India and Rajputana Circle.

District.	Locality.	Name of work and description.	Amount of sanctioned estimate.	Budget allotment for the year 1930-31.	Total allotment as subsequently modified.	Amount spent during the year.	REMARKS.
1	2	3	4	5	6	7	8
		<b>RAJPUTANA</b>	Rs.	Rs.	Rs.	Rs.	
		<i>Special repairs (non-recurring charges) carried out by the Public Works Department.</i>					
Ajmer . .	Ajmer . .	Restoring the collapsed stone chajja at the south-east corner and the parapet at the north-east corner of the Sola Thumba Mosque at Ajmer.	319	319	319	253	
		Add agency charges at 18 per cent.				46	
		TOTAL . .				299	
		<i>Special repairs (non-recurring charges) carried out by the Archaeological Department.</i>					
Ajmer . .	Ajmer . .	Survey of ancient monuments .	1,000	1,000	1,000	357	
		TOTAL SPECIAL REPAIRS .		1,319	1,319	656	
		<i>Annual repairs (recurring charges) carried out by the Public Works Department.</i>					
Ajmer . .	Ajmer . .	Maintenance of Marble Baradari on Aneagar Bund.	1,854	1,854	1,854	1,568	
Do. . .	Do. . .	Annual repairs to Archaeological buildings.	856	725	856	711	
		TOTAL . .				2,279	
		Add agency charges at 18 per cent.				510	
		TOTAL ANNUAL REPAIRS .		2,579	2,710	2,789	

## SUMMARY.

Special Repairs carried out by the Public Works Department . . . . .	Rs.
Special Repairs carried out by the Archaeological Department . . . . .	299
Annual Repairs carried out by the Public Works Department . . . . .	357
	2,789
GRAND TOTAL RAJPUTANA . . . . .	3,445

## CENTRAL INDIA.

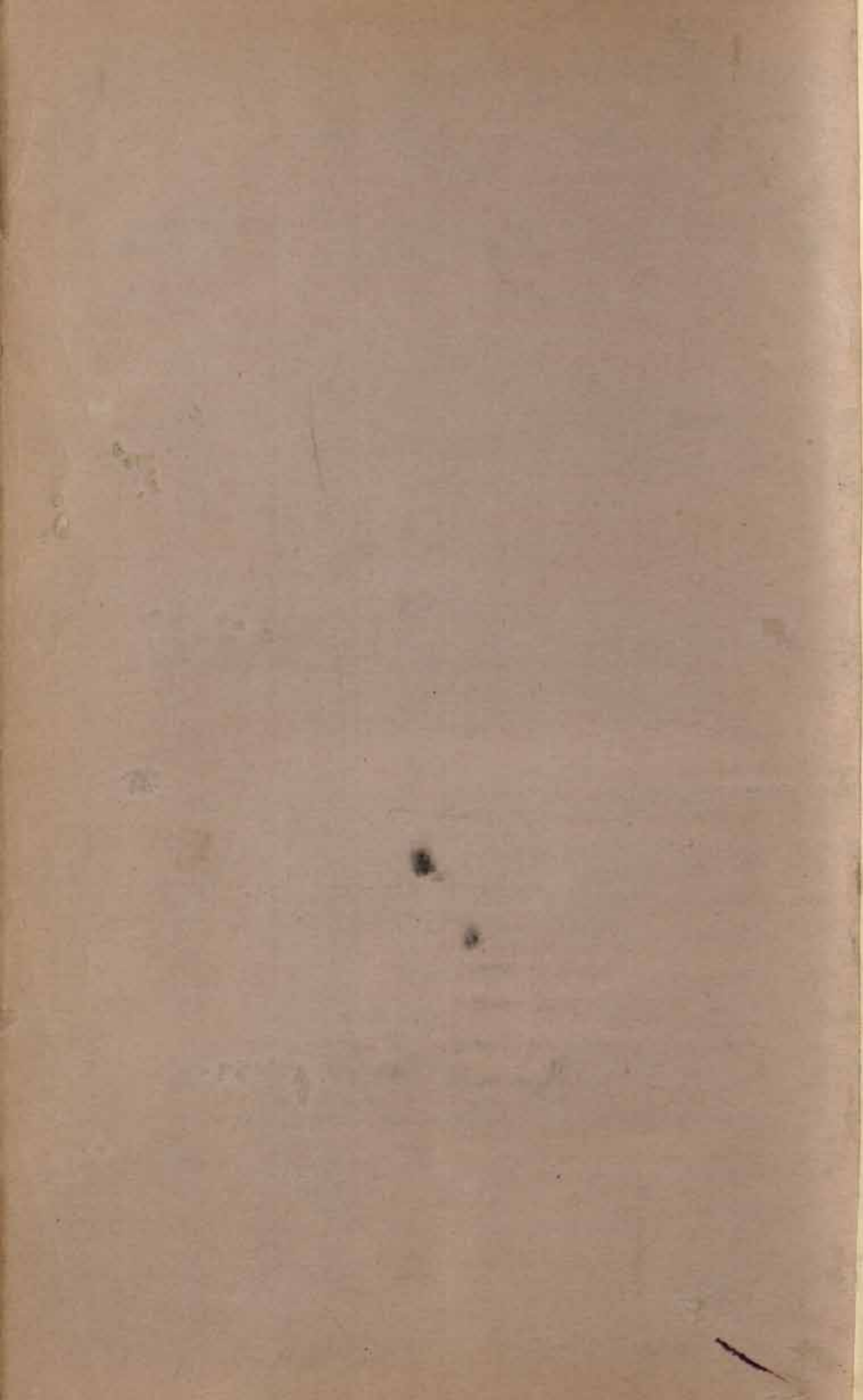
## Grants-in-aid.

1. Datia State . . . . .	Rs.
2. Chhatarpur State . . . . .	2,500
3. Dhar State} . . . . .	4,686
	2,000

TOTAL FOR CENTRAL INDIA 9,186











NC

Central Archaeological Library,  
NEW DELHI. 21797

Call No. R 913.02/I.S.A/Ann

Author—India department of  
Arch.

Title—Annual report of Arch.  
of S. India, 1930-31  
Abb.

*"A book that is shut is but a block"*

CENTRAL ARCHAEOLOGICAL LIBRARY  
GOVT. OF INDIA  
Department of Archaeology  
NEW DELHI.

Please help us to keep the book  
clean and moving.

S. S. 148, N. DELHI.