

GOVERNMENT OF INDIA

ARCHÆOLOGICAL SURVEY OF INDIA

ARCHÆOLOGICAL
LIBRARY

ACCESSION NO. 22657

CALL NO. 2913.041/I.D.A./G

D.G.A. 79

Ex. 8







A.L.
2746

ANNUAL REPORT

OF THE

ARCHÆOLOGICAL DEPARTMENT

GWALIOR STATE.

FOR SAMVAT 1980
YEAR 1923-24.

22657



R 913.041
I.D.A./G.

GWALIOR
ALIYAH DARBAR PRESS.

(593)



ANNUAL REPORT

ARCHAEOLOGICAL DEPARTMENT

OF THE

SMITHSONIAN INSTITUTION



CENTRAL ARCHAEOLOGICAL
LIBRARY, NEW DELHI.

Acc. No. 22657

Date: 14. 2. 58.

Call No. 913.041/7.D.A.G.

CONTENTS.

PART I.

| | Page. |
|--------------------------------------|-------|
| I.—1 Office Notes | 1 |
| II.—2 Circulars and Orders | 1 |
| III.—3 Work at Headquarters | 1 |
| IV.—4 Tours | 2 |
| V.—5 Conservation— | |
| Bagh | 3 |
| Ranod | 3 |
| Badoh | 3 |
| Udaypur | 5 |
| Narwar | 6 |
| VI. Annual Upkeep | 6 |
| VII. Exploration— | |
| (a) Excavations | 6 |
| (b) Listing of Monuments— | |
| Ameria or Murtizanagar | 7 |
| Udaypur | 8 |
| Sunari | 8 |
| Chirodia | 8 |
| Badoh | 8 |
| Pathari | 10 |
| Udaygiri | 10 |
| Chanderi | 11 |
| Goonia | 12 |
| Mohana | 12 |
| Kachhaua | 12 |
| Satanwada | 14 |
| Jharna | 14 |
| Piparia | 14 |
| Narwar | 15 |
| VIII. Epigraphy | 15 |
| IX. Numismatics | 16 |
| X. Archaeological Museum | 17 |
| XI. Copying of Bagh Frescoes | 17 |
| XII. At Home | 17 |
| XIII. Publications and Contributions | 17 |
| XIV. Photographs and Drawings | 18 |
| XV. Office Library | 18 |
| XVI. Income and Expenditure | 18 |
| XVII. Concluding Remarks | 18 |

PART II.—APPENDICES.

| | | | Page. |
|-----|---------------------------------|--------|----------------|
| 1. | Appendix A—Tour Diary | | 19 |
| 2. | „ B—Monuments conserved | „ .. | 21 |
| 3. | „ C— „ listed | | 22 |
| 4. | „ D—Inscriptions | | 26 |
| 5. | „ E—Coins examined | | 32 |
| 6. | „ F—Antiquities added to Museum | | 33 |
| 7. | „ G—Copies of Bagh Frescoes | | 35 |
| 8. | „ H—Photographs | | 36 |
| 9. | „ I—Lantern Slides | | 41 |
| 10. | „ J—Drawings | | 45 |
| 11. | „ K—Books | | 46 |
| 12. | „ L—Income ... | | 50 |
| 13. | „ M—Expenditure | | 50 |
| 14. | Illustrations | | Plates 1 to IV |

ANNUAL ADMINISTRATION REPORT
OF THE
ARCHÆOLOGICAL DEPARTMENT, GWALIOR STATE,
FOR THE
YEAR ENDING 30th JUNE 1924, SAMVAT 1980.

PART I.

Office Notes.

Charge.—During the year of report the undersigned held the charge of the Department except between the 19th of May and the 30th of June while he was on privilege leave. During the period of leave the charge of the current duties of the post remained with Mr. R. S. Saksena, the Archæological Overseer.

Leave.—The Superintendent availed himself of two months' privilege leave from the 19th of May to the 18th of July, out of which one month and twelve days fall within the year of report.

Members of the subordinate staff enjoyed leave as follows :—

- (a) *Archæological Overseer.*—Privilege leave of 12 days from the 22nd October to the 2nd November and again of 14 days from the 18th to the 31st December 1923.
- (b) *Photographer-Draftsman.*—Privilege leave of 28 days from the 12th May to the 8th June and sick leave on Medical Certificate from the 9th to 30th June 1924.
- (c) *General Assistant.*—Privilege leave of one month and five days from the 26th May to the 30th July 1924.
- (d) *Officer Accounts.*—Privilege leave of 15 days from the 24th July to the 8th August 1923.

General.—All the office staff discharged their respective duties harmoniously, diligently and carefully for which I am glad to record my appreciation.

II. Circulars and Orders.

No Circulars or Departmental Orders with special reference to this Department were issued in the year of report.

III. Work at Headquarters.

In addition to the ordinary routine of office the following work was done during the Headquarter season :—

- (a) A resume of the conservation and exploration work accomplished by the Department in the year 1922-23 (Samvat 1979) was prepared and contributed to the *Annual Report of the All-India Archæological Survey.*

- (b) An illustrated article on *Mandasor the ancient Dasapura* was contributed to the Birthday Special Number of the *Jayaji Pratap*.
- (c) As the first edition of the *Gwalior Fort Album* was exhausted by distribution and sale, the second edition of the same was carried through the press and published.
- (d) A number of lantern slides was prepared for being shown at the Departmental 'At Home.'
- (e) A manuscript of a classified list of some 1,300 photographic negatives prepared and stocked in this office during the last ten years, arranged alphabetically under districts and villages was under preparation.
- (f) An up-to-date alphabetical list of ancient monuments arranged under districts and villages was under preparation.
- (g) An Archæological Map of the State was prepared for easy reference.
- (h) New acquisitions brought into the Archæological Museum were arranged and labelled.
- (i) A pamphlet on '*Archæology in Gwalior*' giving a brief account of the Archæological work in Gwalior up-to-date was compiled and published.

IV. Tours.

During the year under report I spent 106 days in camp partly for supervising and directing the works of conservation in progress, for annual inspection of the principal groups of monuments conserved already, for supervising the special work of copying the ancient frescoes at Bagh, for preparing estimates of conservation works about to be undertaken, and partly for listing ancient monuments. (See Appendix A.)

I paid visits of annual inspection to the monuments at Surwaya, Gwalior, Chanderi, Ranod, Badoh, Bhilsa, Besnagar, Udaygiri and Bagh. I supervised and directed the conservation works in progress at Ranod (District Narwar), Badoh and Udaypur (District Bhilsa) and Bagh (District Amjhera). I visited Chanderi and Narwar for preparing estimates of repairs to the tomb known as Bahadurjika Mazar at Chanderi and to the old building known as Kachehri on Narwar Fort. I spent about a fortnight at Bagh directing the work of copying the ancient frescoes.

The following places were visited for listing ancient monuments :—

Mohana (District Gird), Satanwada, Jharna, Pipriah, Narwar, Sikandar-pura and Kachhaua (District Narwar), and Amera or Murtizanagar, Udaypur, Sunari, Pathari and Chirodia (District Bhilsa), and Chanderi and Goona (District Esagarh).

V. Conservation.

During the year of report conservation of ancient monuments was carried out chiefly at Bagh (District Amjhera), Ranod (District Narwar) and at Badoh and Udaypur (District Bhilsa). The list of conservation works in the year is shown in Appendix B.

(Bagh.)

At Bagh the work of freeing the *rock-cut caves* from the enormous mass of their own debris with which they are choked was continued further.

The joint verandah of Caves Nos. 4 and 5 extending over a total length of about 225 feet was cleared up excluding a small mound which was left over since it served as a scaffolding for copying the frescoes on the upper portion of the back wall of this verandah. The copying work having now been completed, the mound will be dug up and removed as soon as the clearance work is resumed next year.

Inside of Cave No. 5 which measures approximately 96' by 44' and which was covered all over with debris about 4' high was cleared up completely.

Three of the four aisles of the large hall of Cave No. 4 was also freed from debris.

The greater portion of Caves Nos. 3 and 4 still remains to be cleared and it is hoped that the work of clearance will be completed next season.

Repairs to the decaying pillars and walls and the construction of masonry supports will be taken up next.

(Ranod.)

The *Khokhai Hindu Monastery* at Ranod is under repairs for the last more than two years. The conservation of the main building had been almost completed last year. In addition to the few items that remained to be done here, the corridors, the courtyard and the precincts of the monument were attended to, in the year of report. In the main building the damaged edge of the stone floor of the verandah was renewed. The cracks in the roof slabs were repaired with country *masala* to render them water-proof. The pavement of the courtyard made up of heavy stone slabs had sunk in several places probably in consequence of huge stones from the upper storey having fallen upon it with a crash. The sunken paving slabs were raised and reset and lime *kankar* was rammed in gaps caused by missing slabs. A lintel in the northern corridor which had cracked was supported on a stone post and another in the west corridor which was dislocated was pushed back into its right position. Three heavy ceiling slabs in the north corridor had fallen down. They were lifted up and reset. A small dilapidated mosque near the monastery was freed from jungle and tidied up. The accretions of earth and rubbish which concealed the base of the monument on the exterior were dug up and removed. The heaps of debris and rubbish which disfigured the precincts of the building were dug away and the ground roughly levelled up. A Hindi summary of the contents of the large Sanskrit inscription on the monument was framed and hung up near the original for the information of the literate visitors to the monument.

(Badoh.)

At Badoh the repairs to the *Gadarmal* temple commenced last year were concluded during the year of report. The items carried out are :

The front face of the high platform on which the chief temple with its attendant shrines stands, was restored with original carved stones which had been dislodged but were lying buried in earth just near their position. The

restored face now shows mouldings and sculpture niches as they originally adorned the face of the platform. As a large number of stones in the other faces of the platform were missing these faces were roughly repaired with promiscuous blocks of stone picked from the debris so as to form a retaining wall to support the edges of the platform. The stepped approach to the platform was exposed by digging away the earth which concealed it and was restored with old stone. The top of the platform was repaved so far as possible with old paving slabs available in the debris and the remaining portion was metalled.

The existing portion of the two front attendant shrines had sagged badly. They were dismantled and properly reset.

The big carved blocks of stone picked from the debris were arranged into a sort of compound wall around the platform at a distance of 60 feet from its sides.

The entrance to the original compound was cleared and tidied up. The pillars of the porches at this entrance were reset plumb.

Some of the better preserved sculptures unearthed from the debris were arranged in order on both sides of the approach road between the outer entrance and the stairs of the platform.

Further, three more monuments at Badoh, namely, (1) the pillared hall known as *Solahkhambi*, (2) the Jaina temple, and (3) the group of Vaishnava temples received attention.

Solahkhambi as its name implies, is an open hall with a flat roof supported on sixteen pillars arranged in four rows, the whole set on a high plinth on the northern bank of a lake. The hall was evidently meant as a pleasure resort for enjoying fresh air and the view of the lake with its pretty lotuses. Judging from the shape of its pillars the building may be as old as the 9th century A. C. or even a little earlier. The repairs to this monument chiefly consisted in the clearance of jungle, the proper resetting of some of the pillars which were leaning out of plumb, and of the brackets, beams, and roof slabs, etc., which they carried, the underpinning of the undermined bases of a few pillars, the filling up of a deep pit inside and finishing the floor with *murum* rammed hard, the construction of steps to get up to the floor and lastly the throwing up of earth to conceal and strengthen the exposed foundations of the plinth.

The *Jaina temple* is a group of some twenty different shrines enclosing an oblong courtyard. The individual shrines are not all contemporary but appear to have been constructed at different times ranging from the 9th to the 12th century. Some of these are flat-roofed, others have domes and still others are crowned with *sikharas*. The monument was overgrown with a very dense jungle so much so that it was almost concealed from view. The jungle was cleared up completely although the roots of some of the bigger trees will require attention for some time to come before they are thoroughly eradicated. The interior of the courtyard and the shrines was freed from heaps of debris. The ground inside was dug up till the original floor pavements were exposed. Stone or masonry supports were set up in some places where they were necessary and petty repairs including underpinning were done to the rubble masonry of walls of the shrines and parapets.

The *Vaishnava* temples at Badoli are in an advanced condition of ruin. Originally there may have been more than a dozen temples in this group but at present only three of them are standing and these too in such a tottering condition that hardly anything can be done now to rescue them. The rest have been reduced to mere heaps of debris.

The whole site was enveloped in thick jungle. This was cleared up so as to render the ruins accessible to visitors. Important sculptures lying scattered in the ruins were picked up and arranged so as to form a small open air museum round one of the temples.

(Udaypur.)

Perhaps the most important monument taken up for conservation during the year of report is a great Siva temple known as *Nilakanthesvara* or *Uddyesvara* at Udaypur (District Bhilsa). The date of the temple is definitely known from the numerous stone records which it has the good fortune to possess. It was constructed between V. S. 1116 and 1137 (= A. C. 1059 and 1080) by Udayaditya, the well known Paramara king. It consists of a shrine room with a lofty and elegant spire, a hall, and entrance porches on its three sides. It is situated in a spacious rectangular compound with attendant shrines at corners and mid-points of its sides and a peculiar flat roofed structure in front of the chief entrance to the temple known as *vedi* which was probably used as a sacrificial room or a room for the reciting of the Vedas. The temple is built of large blocks of red sandstone which serves to enhance its effect. The temple itself is still structurally sound although one and all of the numerous figure sculptures with which the exterior facing was decorated have been mutilated and disfigured. This temple has been described by Fergusson (*History of Architecture*, Vol. II, page 147) who rightly admires the great beauty and elegance of the design of its *sikhara*. This is certainly the finest and the best preserved example of a mediaeval Hindu temple in Gwalior State and perhaps so in the whole of Central India.

In the same compound is a mosque built by Muhammad II Ibn Tughlaq with material taken from a Hindu temple which to judge from the material was probably a companion of the Udayesvara temple.

Although the temple is in a comparatively fair state of preservation nevertheless its body and surroundings need a good deal of clearance and repairs. For instance, the village people have encroached into the original compound of the temple by building a number of *kachcha* houses which have disfigured the view of the monument and which it is necessary to clear off. The proposal of acquiring these houses has made a fair progress and the acquisition is hoped to be an accomplished fact in a few months.

The following items of conservation were carried out here in the year of report :—

The temple and its precincts were freed from small jungle and vegetation. A big *pipal* tree growing on the *vedi* and a *bel* tree growing on the steps of the eastern porch of the temple were cut off and completely eradicated. In doing so a portion of masonry had to be dismantled which was afterwards re-built. The *kachcha* rubble work put in later times at the principal entrance to the temple was dismantled and the steps were repaired in carefully dressed

blocks of stone so as to match the original work. Leakages in the pyramidal roof of the hall were repaired. Later rubble accretions made to the *vedi* were cleared away.

The whole compound in general and the mosque behind the temple in particular were freed from the heaps of rubbish and earth. The pavement in the compound had sunk in a few places, the damaged patches were made good. A dilapidated rubble structure over the main entrance to the compound was dismantled and removed. A terrace roof was put over the entrance. The terrace roof of the mosque leaked in several places. A fresh 6" coat of stone concrete in good lime was therefore put over it so as to render it water proof. The main entrance was provided with an iron gate. The old doors of the main temple and its porches had badly decayed. They were replaced with decent teak wood shutters in Indian pattern so as to be in keeping with the merits of the building.

The Home Member accompanied by the Suba Bhilsa, and Tehsildar Basoda, was good enough to pay an inspection visit to this monument on the 18th April 1924 in the course of his tour in the District.

Narwar Fort.

In obedience of oral orders of H. H. the Maharaja Sahib the old Mahal known as Kachehri in the Narwar Fort was carefully examined and a conservation note and estimates of clearing up the building and converting a part of it into a Dak Bungalow, of repairing a fallen bastion and of improving the approach road were prepared and submitted to H. H. The old Mahals in the Narwar Fort are extensive and interesting buildings which have reached an advanced condition of decay. To repair the whole lot is out of question. But at least more important portions of them deserve to be tidied up and provided with convenient footpaths to enable visitors to take a round through the ruins.

VI. ANNUAL UPKEEP.

Besides the special repairs detailed above, all monuments already conserved were inspected and jungle clearance and other petty measures of annual upkeep were carried out there.

VII. EXPLORATION.

(a) Excavations.

No excavations were undertaken in the year. It had been originally proposed to carry out trial excavations at Pawaya, the site of Padmavati, but as the legal procedure preliminary to the acquisition of the desired plots of land could not be completed before the winter season had well nigh expired the proposed excavations had to be postponed to the next field season.

(b) Listing of Monuments.

Sixty-one monuments situated in 15 different places, namely, Mohana (District Gird), Satanwada, Jharna, Pipriah, Narwar, Sikandarpura and Kachhaua (District Narwar), Amera or Murtizanagar, Udaypur, Sunari, Pathari and Chirodia (District Bhilsa) and Goona and Chandari (District Esagarh) were added to the list in the year of report. They chiefly comprise sculptures, inscriptions and ruins of mediæval temples, tombs and mosques.

Appendix C shows a list of the newly listed monuments. They may be described briefly as under :—

(District Bhilsa.)

Village Amera or Murtizanagar.—The village is about $1\frac{1}{2}$ miles to the south of Udaypur in the Basoda Pargana. A short distance to the north-east of the village at the foot of a small hill is an old ruined tank with dam built of stone. The dam is now very much ruined and the tank is full of silt and consequently dried up. A stone inscription found lying loose on the slope of the adjoining hill presumably belongs to this tank. It records its construction by a Brahmana named (Vi) krama in V. S. 1151 (= A. C. 1094) during the reign of Naravarman (a Paramara king of Malwa).

On the slope of the hill a few hundred yards to the east of the tank stand the ruins of a small temple which appears to have consisted of a shrine with a porch in front. The shrine measures 6'6" in length and 5'8" in breadth, while the porch is 5'9" by 5'8". The temple is popularly known as Vedi.

About half a mile to the west of the village are the remains of what appears to be a pillared hall. The building also bears the popular name of Vedi. (People in the locality believe that the builder of the Udayesvara temple built also 12 Vedis, 3 in each direction of the great temple and so they have named all ruins of temples in the vicinity as Vedis even though they have nothing to do with the great Udayesvara temple.) On plan the building is almost square, measuring as it does 13'3" by 13'9" externally. It is a 12 pillared hall with 12 short pillars set on the dwarf compound wall which is 4' high and carries on its top a line of coping which served as a line of seats. There is a line of socket holes in this coping which evidently held back rests. The pillars, architraves and the exterior faces of the compound walls bear carvings. The ceiling consists of diminishing squares placed diagonally one within another. The north, south and east walls are pierced each with a passage opening.

Condition.—The building is very much shaken. The foundations have sunk. The walls and the pillars are leaning inside. The floor which was originally paved has lost its flag stones. The roof slabs also have been displaced.

In view of several buildings of this type existing in the locality this monument does not deserve more than mere preservation.

Udaypur.—About three quarters of a mile towards the south of the village on the slope of a hill there is a gigantic unfinished sculpture carved in a single boulder of rock. The figure is lying horizontally. It is 26' tall, 12'7" broad across the chest and hands and 4'6" thick. It is six-handed. One of the right hands holds a sword, another a *Damaru* and the third an unfinished object, probably a *Trisula*. One of the left hands holds a skull-crowned mace, another points a finger towards its left foot and the third is held in the *Abhayamudra*. The feet are in a dancing posture. A human figure (some demon) is trampled under the left foot. A serpent which is entwined round the neck has its hood on the chest and the coils of its body hanging down. The head of the figure is covered with matted hair shaped

like a crown with the sign of crescent moon on it. The sculpture is locally known as Ravana but in fact it represents a terrific form of Siva.

Sunari.—Near this village by the side of the cart track leading from Udaypur to Basoda are the bare remains of a shrine in which are sheltered two badly mutilated sculptures. One of them represents the Bauddha Avatara of Vishnu and the other Lakshmi-Narayana.

Chirodia.—This village is about 3 miles to the east of Bhilsa. Outside the village, towards the east, under a tamarind tree, there is a site of an old temple now converted into a *kachcha* platform where some of the old carvings are standing or lying about. Among these there are two rather good sculptures of Ganesa and Yama.

Badeh.—During the clearance of debris with which the Gadarmal temple and its precincts were choked, a number of mutilated images of goddesses were found. Under the base of each of these images is a tenon. On clearing the debris in the shrine of the principal temple it was found that there is a line of raised pedestals or seats touching the walls, evidently intended to support idols. On examination the seats were found to have socket holes corresponding to the tenons of the sculptures referred to above. From their style the sculptures are referable to the 9th century or thereabout which is also the date of the original temple which has been repaired later on. This original temple, sheltered the aforesaid sculptures and therefore, was dedicated to a goddess or goddesses. The image of a goddess on the dedicatory block of the shrine doorway further corroborates this view which is still further supported by the fact that a large and beautiful (though mutilated) sculpture of a mother goddess with a child was found in the shrine room lying loose in the debris, which was probably the principal idol in the temple. The mothers or female energies in the universe were common objects of worship in the Gupta and Mediæval periods. They are generally found as adjuncts of Saiva temples. But separate temples of goddesses such as the Chonsat Jogini temple at Khajuraho and Jubbulpore are also met with. The Gadarmal temple was such a temple dedicated to the Mothers.

After the original temple had suffered mutilation at the hands of Muhammedan invaders, an attempt was made to repair it. But the operations appear to have been left incomplete. The huge mass of rough rubble platforms with which the temple was enveloped were built most probably to serve as scaffolding during the repairs. As the operations broke up in the middle the scaffolding was not dismantled and cleared up. Its existence till of late cannot perhaps be explained satisfactorily in any other way.

Up to the top of the walls of the shrine the original temple has survived, the structure above including the *sikhara* is clearly a later repair which accounts for the promiscuous employment of all sorts of carvings. Some Jaina sculptures are used in these repairs which perhaps indicates that the temple was repaired by the Jainas.

About a quarter of a mile to the N. W. of the Gadarmal temple stands a Jaina temple consisting of 19 cells arranged on three sides of a rectangular courtyard. The images of Tirthankaras sheltered in the cells beginning at the north-east corner and proceeding to the right are as follow.

| Cell No. | Name of Tirthamkara. | Pose. | Lanchhana or mark. |
|----------|--|---------------|--|
| 1 | Unidentified ... | ... Standing. | No mark. |
| 2 | { Mahavira ... | ... Seated. | Lion. |
| | { Mallinatha (?) ... | ... Standing. | Water-jar (?) |
| | { Ajitanatha (polished) ... | | Elephant. |
| 3 | { Unidentified height 7' 8" biggest of the three (polished). | Standing. | Broken off. |
| | { Sambhavanath (polished) ... | .. | Horse. |
| 4 | Two images, bigger of the two is 9' tall. | .. | ... |
| | { Sambhavanatha ... | .. | Horse. |
| 5 | { Rashbhanatha height 9' .. | .. | Bull. |
| | { Ajitanatha ... | .. | Elephant. |
| | { Unidentified ... | .. | Broken. |
| | Santinatha ... | .. | Antelope. |
| | Parsvanatha ... | .. | Serpant. |
| 6 | { Unidentified ... | .. | Hidden under ground. |
| | Rishabhanatha ... | ... Seated. | Bull. |
| | Unidentified ... | .. | Unidentified. |
| | { Two small images in a niche ... | .. | No mark. |
| 7 | An empty cell for passage ... | ... | ... |
| 8 | A large image height 9' ... | ... Standing. | Hidden under ground. |
| 9 | A big image height 11' 3" (this is the principal shrine). | .. | .. |
| 10 | { Five images ... | ... Seated. | In the case of one water-jar is visible. The marks of the rest are hidden. |
| | { Three images... .. | .. | |
| | { Rishabhanatha ... | ... Standing. | Bull. |
| | Parsvanatha... .. | ... Seated. | Serpant. |
| 11 | { A third image ... | .. | No mark. |
| | Outside this cell there are two standing images of Tirthamkaras. | .. | ... |

| Cell No. | Name of Tirthamkara. | Pose. | Lanchhana or mark. |
|----------|--|----------|--------------------|
| 12 | A big image | Standing | Mark broken off. |
| 13 | Contains a standing image of Bhujavalli with 19 small seated images of <i>Tirthamkaras</i> on the back ground and a 20th figure of a goddess with child. | " | " |
| 14 | Unidentified | " | " |
| 15 | { Parsvanatha | Seated | Serpant. |
| | { Two images of Santinatha ... | Standing | Antelope. |
| 16 | Unidentified | Seated | No mark. |
| 17 | A small image | Standing | " |
| 18 | Unidentified | Seated | " |
| 19 | A Chaumukha | Standing | " |

There are two pilgrims' records on the door jambs of cells of this temple. One of them is dated in V. Samvat 1134 and the other in V. Samvat 13 which certainly omits the figure showing the century and is perhaps to be read V. Samvat 1113. Two of the images also bear short inscriptions.

Pathari.—A large monolithic pillar stands in the eastern part of the village. Its approximate height above ground is between 40 to 45 feet. Besides, it is probably a few feet deep under the ground level. It has a square base 8' above ground each side of which measures 2'9" wide, the upper portion is round with a diametre of 2'6". It has a capital in the shape of an *amalasila* surmounted by a square abacus and not a bell-shaped capital as observed by Cunningham (*Arch. Surv. of India Report*, Vol. X, page 70 where the pillar is briefly described). The pillar is crowned with a double faced standing figure of a god now only partially preserved. The pillar bears a large inscription in 38 lines of good Sanskrit language which records that a temple of Sauri or Krishna was constructed here by Parabala, a king of some branch of the Rashtrakuta dynasty in Vikrama Samvat 917 = A. C. 861 (*vide Epigraphia India*, Vol. IX, pp. 248-56).

Half a mile to the east of the pillar is a gigantic unfinished sculpture of Varaha Avatara carved out of a single boulder of rock. It was probably left unfinished and abandoned owing to some flaw in the stone. The sculpture is now in a prostrate position half buried in earth. It is 13' long, 11' high excluding a cubical block on the neck which is about 1' high but including the pedestal which is 1'3" in thickness.

Udaygiri.—A new point which suggested itself to me during the last annual inspection of the Jaina Cave (No. 20) is this. The inscription on the cave speaks of the installation of an image of Parsvanatha at the mouth of the cave. The inscription flanks the mouth of the cave on one side and on the other are two rock-cut images of Jaina *Tirthamkaras* one of which is that of Parsva. In the inscription the image of Jaina (*Jinakritim*) is qualified by

the adjective *sphhata-vikato-ikatom* which Dr. Fleet (*Gupta Inscriptions*, page 259) renders by 'richly endowed with the expanded hoods of a snake and an attendant female deity'. Of course, the hoods of the snake are present in the rock sculpture referred to above, but the female attendant is not. This however can be very easily accounted for. Because the natural interpretation of the qualifying phrase quoted above is "mighty and fierce on account of the hoods of a snake." This description fits in very well with the rock-cut images in question and I am inclined to think that the inscription refers to this image rather than (as held by Dr. Fleet) to some other loose image which has disappeared now. Further from the style of sculpture the image is referable to the same period (5th century A. C.) to which the inscription belongs. Moreover the view is corroborated by the word *achikarat* occurring in the inscription which would refer to the 'making or chiselling' of an image (in rock) rather than to the 'installation' of a loose image.

(District Esagarh.)

Chanderi.—A tomb known as Bahadurjika Mazar stands about a mile to the south of the town, between the Dhobi Talao and the Pan Baodi. A descendent of the person whose remains are sheltered by the tomb informed me that the present generation in the family is the sixth from the man buried. So the tomb is about 150 years old. It possesses no interest either from the architectural or historical view point. It is one of the many ordinary tombs which stand scattered round about Chanderi.

The tomb is a dome rising from the octagonal base supported on 12 pillars arranged on four sides of a square. The frame work of the dome is made up of brick and is plastered inside and outside. It is crowned with a high stone (?) pinnacle. The rest of the structure is built of stone. The tomb is set on a double plinth. The bases of pillars, the architraves and the brackets supporting them are of the Hindu pattern. The base and the top of the shafts are four-sided, the intervening portion being made into eight sides by chamfering the corners. The line of eave slabs (*Chhajja*) going round the base of the dome is supported on wavy brackets which are common to many other old buildings in the locality. Rosettes and mihrabs are employed in the building as decorative devices.

The upper plinth supports three tomb stones. The central appears to be the original one, the remaining have been added later on. The central and the eastern tomb stones bear inscriptions perhaps Qoranic texts. The lower plinth also bears a number of tomb stones evidently of members of the same family. The lower plinth measures 47'4" square and 5'5" to 6'8" high. The upper plinth is 21'4" square and 1'10" high.

A few feet to the west of the tomb is an interesting Sati stone lying prostrate on the ground. The stone is 6'2" high, 1'5" broad and 10" thick. It bears no inscription but the sculpture is interesting. The lower portion of the stone is plain. In the upper portion there are two panels of sculpture one above the other. The upper panel contains the usual figures of the hand, the sun, the moon and the stars. But the lower panel is noteworthy for the rather unusual representation of the cremated husband and wife as transformed into Siva and Parvati riding on the bull and the lion, respectively. Siva is four-armed and holds a snake in one of his left hands. Both figures wear crowns.

Goonā.—My attention was called to the circuit house (formerly Commanding Officer's Bungalow) at Goonā. Most of the material such as pillars, arches, eave slabs, etc., employed in the construction of the verandah of the building has been borrowed from the ruins of some Vaishnavite temple two to three centuries old. Among the figure sculptures on the brackets are the images of Vishnu, Hanumat, Karttikeya, Mahalakshmi and Gajalakshmi and many gods and saints who hold rosaries of beads in their hands. One of the brackets consists of two good figures of peacocks. There are two detached sculptures of caparisoned elephants placed so as to flank the entrance. An inscription in crude Nagari characters is seen under an image of Mahalakshmi. It reads *Fratima Mahalakshmi*. Another inscription exists under a male figure but is mostly illegible. Some sculptures have been built in the walls inside the Bungalow. Among them Vishnu, Nrisimha and a group of Rama and Lakshmana may be recognised. The artistic worth of the carvings is however small. The work is dull, shallow and stereotyped. I was told that these stones were brought from a place in the Sironj District of the Tonk State, some 17 miles from Goonā.

(District Gird.)

Mohana.—In a field about one furlong to the north of the Dak Bungalow there are three Sati pillars, all bearing inscriptions which are very much damaged. One of these is somewhat legible and is dated in Vikrama Samvat 1462.

(District Narwar.)

Kachhaua.—This is now a small village about 5 miles to the north of Pichhore. A quarter of a mile to the east of the present village lie the ruins of a fortified town, which has long disappeared. Traditionally the town is attributed to the Bundela Rajas of Orchha. Sivacharan Dube of Pichhore related the following story:—

"Raja Indrajit, a grandson of Virasimhadeva of Orchha, reigned at Kachhaua. His queen whose name was Padmavati was very beautiful. The fame of her beauty excited the cupidity of Emperor Shahjahan who besieged the town. There was no sign of surrender even after a full year's seige. A tracherous washer-woman suggested that the dam of the tank which supplied water to the garrison should be breached. This device was successful, the town was captured and the king and the queen taken prisoners. In reply to the advances of the Emperor the queen sent an ingeneous reply expressed in a verse which ran :—

*Vinati mo paravin ki suniye Sah Sujan,
Jhuti patal vs bhake ek Kauva ek Svan.*

The queen was proficient in the art of music. She sang a song of Malhara Raga and at once it began to rain. The Emperor was extremely pleased and he restored the royal couple to freedom. It is said that Pichhore was built by Rudrasimha, a brother of Indrajit, after Kachhaua had fallen."

What now exists are mere traces of the town wall with ruins of bastions here and there, remains of a gateway, ruins of a large two storeyed building the upper storey of which has totally disappeared and glimpses of the lower storey of which can be had through stray holes in the domed roofs, traces of a well and a tank and last but not least a building which is variously styled as a

row there is a projection on the exterior. The general features and lay out of the building indicate that it is a mosque.

Qazi Moajuddin of Pichhore who claims to be the owner of the mosque told me that he has got a *sanad* granted by Akbar relating to the mosque and some piece of land attached to the same. I am sorry I did not find time to see the *sanad* and verify the Qazi's assertions.

Satanwara.—Half a furlong to the north-east of the village is an old Siva temple with plain walls of fairly large sized blocks of stone, and a carved doorway. The sculpture on the doorway is rude and indicates a late date (15th or 16th century) for the existing temple. But there are some fragments of carving (*e. g.*, an *amalasila*) belonging to an 11th century temple lying about near this building which appear to show that the present temple has been built on the site of an old temple of about the 11th century. An old well about the same date (11th century) is seen in front of the temple.

On the west of the village half buried in the boundary dam of a paddy field is a carved memorial pillar, only the top of which is now exposed to view.

In a wall of a house on the north-west outskirts of the village is a stone inscription in Hindi (not yet copied) which goes back to the reign of Emperor Shah Jahan.

On the eastern outskirts of the village is a small tank on the bank of which stands a stone slab on which a pair of serpent gods (*Nagadevatas*) are carved in relief.

Nearby is the remnant of a Vishnu temple of about the 10th or 11th century. The doorway and four pillars of the *Mandapa* carrying the beams of the ceiling are all that has survived.

• Close by is the site of another temple.

In a modern room which is only a few feet to the west of the Vishnu temple are stored some fragments of old well carved sculptures. Some similar fragments are also lying outside this room.

Carved pillars and architectural pieces belonging to old temples are seen built up in modern houses and platforms and a few are also lying strewn about on the northern outskirts of the village.

A memorial pillar carved in the usual way is lying prostrate about 300 yards to the north-east of the village.

Jharna.—Towards the end of the fourth mile from Satanwada, on the Satanwada-Narwar Road, is a place called *Jharna* in the jungle. Here there are two natural springs of water from which a brook takes its rise. The water of the springs is crystal pure and shelters fishes. There is an ample shade of trees and on the whole it is a charming spot. About half a furlong towards the south-west of the road, near the upper spring lies a huge pile of carved stones which once composed a large temple or perhaps temples as old as the 11th or 12th century, which are no more standing.

Pipriah.—The old road from Narwar to Shivpuri passes through this place (*Jharna*). Ascending the *Ghati* by this road which is now a mere foot-path one comes to a table land at about $\frac{1}{2}$ mile from the *Jharna*. Here within the limits of the village Pipriah are standing two life size statues of

Hanumat, one of which is well carved. There is also the site of a small old temple in the ruins of which an image of Trimurti about 3 feet high is worthy of notice.

Narwar Fort.—There are two roads by which the Fort of Narwar is now entered, one on the east through the town and the other on the west. There was one more road in the north-west part through a gate called Dholya Pol which is now closed.

The eastern road passes through four gates: (1) Alamgiri gate, (2) Saiyadonka Darwaza, (3) Piran Paur, and (4) Hawa Paur.

On the western road there are two gates; (1) Urwahi, and (2) Gaumukha.

The monuments in the Fort may be enumerated as under :—

Mahals.—(1) Kachehri, (2) Ladau Bangala, (3) Chhipmahal, (4) Mahals in the southern portion.

Tanks.—(1) Makaradhvaja Tal. (2) Rewakund, (3) Sagartal, (4) Chandan Talaiya, (5) Katora Tal.

Mosques.—(1) The large mosque 125' 10" by 100' near Kachehri (2) mosque near Hawa Paur, (3) another mosque near Chandan Talaiya.

Tombs.—Madar Sah.

Guns.—(1) Ramban, (2) Narwar Bana, (3) Satrusamhara near Rewakund, and (4) Fatehjung.

Miscellaneous.—Roman Catholic chapel and cemetery, (2) Sati pillar on the southern bank of the Makaradhvaja tank, dated V.S. 169 [3], (3) a *Baodi* with inscription, dated V. S. 1687, (4) a curious sculpture slab in a *Chhatra* on the western bank of Makaradhvaja tank.

Narwar Town.—Near the eastern portion of the city wall inside the town in a field belonging to Bhagwanlal Panda is a tomb of an Armenian Christian nearly buried up in debris. The tomb slab visible measures 6'3" by 2', has a sunken tablet, chamfered edges and a carved *pan* or betel leaf edge. The tablet has a figure of a cross and an inscription in Portuguese (?) language incised on it. On the upper outer margin is engraved a Persian translation and on the side edges a Hindi translation of the same (see Appendix D).

Sikandarpura.—Within the boundaries of Sikandarpura, a hamlet about one mile to north of Narwar town, to the right of the road leading to Magroni, in a field owned by Kharga Kachhi, lie two other ruined tombs also of Armenian Christians and both bearing short inscriptions in Portuguese (?) and Persian (see Appendix D). The tomb slabs measure 3'7" by 1'10" and 3'11" by 2'2", respectively, have a sunken tablet for inscription and a cross engraved on the tablet.

VIII. EPIGRAPHY.

In all, twenty-three inscriptions were copied or noticed in the year of report, all but two of which are new discoveries. Nine of these are in Sanskrit, one in Prakrit, six in Hindi, four in Persian, and three in Portuguese (?). The earliest of these is dated in V. S. 917 = A. C. 861 and the latest in A. H. 1163 = A. C. 1750. One of these refers to Rashtrakuta

Parabala, another to Paramara Naravarman, still another to Paramara Jayasimha, two other to Jayasimha of Jayapur and another to Sikandarshah Lodi of Delhi. The rest mention no king or dynasty. One of these, records the construction of a tank, another of a well, a third of a mosque, a fourth of a temple, two other register charity grants, two record the making of guns, three are epitaphs of Sati, two are pilgrims' records, seven are epitaphs on tombs, one is a mason's mark and the rest are illegible or unintelligible.

One of the new epigraphical discoveries is of historical importance (Appendix D. No. 1.). It is a stone inscription found lying loose on the slope of a hill in the vicinity of an old ruined tank about $1\frac{1}{2}$ miles to the south of Udaypur (District Bhilsa). The inscription is in 23 lines of Nagari characters and Sanskrit language and records the construction of a tank (evidently the one near which the stone was found) by a Brahmana named (Vi) krama during the rule of Naravarman, a Paramara king, in V. S. 1151 = A. C. 1094. The numerous records at Udaypur have already proved that in those days this locality was under the Paramaras. The historical value of this record lies in this that it gives us a date for Naravarman 10 years earlier than any known hitherto (*e. g.*, from the Nagpur Prasasti) and thus puts back the probable beginning of his reign by ten years.

IX. NUMISMATICS.

Three hundred and thirty-one coins were examined in the year of report. Of these 330 were of silver and one of copper. All these coins came from a treasure-trove find at Ghataoda, a village in the Dasai Jagir, District Amjhera. The silver coins were all of the type known as Gadhiya which is found in south-west Rajputana, Malwa and Gujarat. It is a degenerate copy of Indo-Sassanian coinage, bearing as it does on the obverse a rude imitation of king's bust to right and on the reverse lines and dots suggesting the Sassanian fire-altar. It is not yet certain as to what dynasty or dynasties issued this coin. Numismatists assign it roughly to the 11th century A. C. (*J. M. C.*, page 233).

One copper coin found in the same lot is a punch marked piece showing on the obverse the rayed sun and a crude human figure and on the reverse some indistinct marks (see Appendix E).

X. ARCHÆOLOGICAL MUSEUM.

A Sanskrit inscription of the 11th century A. C., 45 stone sculptures of various gods of the Hindu pantheon, 5 copies in colour and 8 drawings in outline of Bagh frescoes, an old miniature painting in the Mughal style and 1 copper and 12 silver coins were added to the Archæological Museum in the year of report. Some of the sculptures notably that of Siva slaying Gajasura from Kotah, the Bauddha Avatara of Vishnu from Sunari and some beautiful busts of goddesses from Badoh are among the more interesting acquisitions for the Museum. But by far the most important are the copies of Bagh frescoes. (The acquisitions are detailed in Appendix F.)

The Museum is steadily gaining in popularity. 830 visitors have signed their names in the visitors' book this year, but the actual number of visitors was much larger as many of them being illiterate could not put

in their signatures, while others who came in groups were content by giving the signature of their leader or representative only.

The number of European and American visitors exceeded one hundred, the countries represented being England, France, Germany, Italy, Norway, Canada, U. S. A., India and Ceylon. The addresses of Indian visitors represent almost all the provinces of India, including Punjab, U. P., Bengal, C. P., Bombay, Gujrat, C. I., Rajputana and Madras.

Among distinguished visitors of the year may be mentioned Sir Alexander Muddiman, the present Home Member of the Government of India, and some Indian Members of the Indian Legislature,

XI. COPYING OF BAGH FRESCOES.

The copying of the valuable but fast fading frescoes on the Buddhist Caves at Bagh was undertaken and a greater portion of it carried out in the year 1920. In the meantime the work fell into abeyance as suitable artists were not forthcoming to complete it. Fortunately in the year of report Capt. W. E. Gladstone Soloman, the Principal of Sir J. J. School of Arts, Bombay, who takes special interest in ancient Indian Paintings, deputed Messrs. Bhonsle and Apte, two of his advanced students to do the work at Bagh. These artists assisted by Mr. Bhand, a promising art student of Gwalior, were able to do water colour copies of the remaining figure paintings and outlines of representative specimens of the floral and geometrical decorations on the interior of Cave No. 4. Equal size copies both in outline and in water colour of all the important frescoes that have survived at Bagh have thus been completed. Further the plan to publish them in a convenient book form through the India Society of London is under contemplation and it is hoped that it will materialise in the near future, thus supplying a long felt want.

XII. AT HOME.

The function of Departmental 'At Home' inaugurated last year was repeated this year. This year the Department was 'At Home' to meet His Highness at the Race Course grounds on the 19th of March. Sardars, high Officers of Government and respectable gentry in the city and His Highness' guests who had assembled for the races were invited. The copies of Bagh frescoes which were exhibited among other archaeological exhibits in a small pavilion for the inspection of guests were greatly admired. A brochure giving the brief history of the work accomplished by the Archaeological Department during the last ten years was distributed among the guests. But the special feature of this year's 'At Home' was a magic lantern display in which nearly a hundred slides illustrating the principal archaeological buildings in the State were shown. This last item made a very favourable impression on the audience and it effectively brought them into touch with the work which this Department has been doing. Thus the usefulness of this function and the desirability of repeating it from year to year is established beyond doubt.

XIII. PUBLICATIONS AND CONTRIBUTIONS.

Second edition of 300 copies of the *Gwalior Fort Album* was brought out.

A pamphlet of 40 pages giving a brief account of the archaeological work in Gwalior and entitled '*Archæology in Gwalior*' was published.

A resume of the Exploration and Conservation work in the State was contributed to the *All-India Archaeological Survey Report*.

An illustrated article on '*Mandasor the ancient Dasapura*' was contributed to the Birthday Special Number of the *Jayaji Pratap*.

XIV. PHOTOGRAPHS AND DRAWINGS.

One hundred and twenty-nine photographic negatives and one hundred and nine magic lantern slides were prepared in the year of report. (See Appendices H and I.)

Ten drawings and sketches were made in the year (see Appendix J).

An alphabetical list of photo negatives in this Office which number nearly 1,500 is now ready in manuscript and is about to be published for the benefit of the public to whom prints are supplied on payment of a nominal price.

XV. OFFICE LIBRARY.

One hundred and thirty-four volumes on Archæology, Architecture, Art, History and allied subjects were acquired for the Office Library in the year under report (see Appendix K). Out of these ninety-four were purchased and the rest were received as presents from the Government of India, Provincial Governments and Governments of Indian States to whom our thanks are due.

XVI. INCOME AND EXPENDITURE.

The budget of the Department is the same (namely, Rs. 25,000) as it has been for the last five years. Statements of income and expenditure are set forth in Appendices L and M from which it will be seen that the income in the year amounted to Rs. 433-10-7 and expenditure was Rs. 26,565-0-11.

XVII. CONCLUDING REMARKS.

The Darbar were graciously pleased to confer on me a *poshak* on the auspicious occasion of His Highness' Birthday in the year of report. I am deeply grateful for this gracious appreciation on the part of the Darbar of the humble work which I was able to put in their service. I have also to thank Sardar Major Maloji Rao Sahib Sitole for the interest he took in the work of this Department while he officiated as Home Member and especially for the ready and generous help he rendered to the Department at the time of 'At Home.' In conclusion, I beg to acknowledge my indebtedness to our Home Member Shrimant Khase Sahib Powar for the unfailing courtesy and the valuable advice with which he has continued to favour me in discharging the duties of my office.

MOTIMAHAL, GWALIOR,

15th October 1924.

M. B. GARDE,
Superintendent of Archaeology,
Gwalior State.

PART II.

APPENDIX A.

The Tour Diary of the Superintendent of Archaeology,
for Samvat 1980.

| Year and month. | Date. | Movements and Halts. |
|-----------------|-----------|-------------------------------------|
| 1923. | | |
| July ... | 16th-17th | Gwalior to Badoh <i>via</i> Kalhar. |
| | 18th-19th | Halt at Badoh. |
| | 20th-21st | Badoh to Gwalior <i>via</i> Kalhar. |
| August - | 28th | Gwalior to Shivpuri |
| | 29th | Halt at Shivpuri. |
| | 30th | Shivpuri to Surwaya and back. |
| | 31st | Halt at Shivpuri. |
| September. | 1st | Shivpuri to Gwalior. |
| | 16th | Gwalior to Shivpuri. |
| | 17th | Halt at Shivpuri. |
| | 18th | Shivpuri to Gwalior. |
| | 30th | Gwalior to Shivpuri. |
| October ... | 1st-2nd | Halt at Shivpuri. |
| | 3rd | Shivpuri to Gwalior. |
| | 25th | Gwalior to Dabra. |
| | 26th | Dabra to Dhumeswar. |
| | 27th | Dhumeswar to Pawaya. |
| | 28th | Pawaya to Dabra. |
| | Do. | Dabra to Gwalior. |
| November. | 4th | Gwalior to Shivpuri. |
| | 5th | Halt at Shivpuri. |
| | 6th | Shivpuri to Gwalior. |
| | 27th | Gwalior to Agra and back. |
| | 28th | Gwalior to Shivpuri. |
| | 29th | Shivpuri to Kolaras. |
| | 30th | Kolaras to Ranod. |
| December. | 1st | Halt at Ranod. |
| | 2nd | Ranod to Mayapur. |
| | 3rd | Mayapur to Pichhore. |
| | 4th | Pichhore to Kachhaua and back. |
| | 5th | Pichhore to Basai. |
| | 6th | Basai to Kalhar. |
| | Do. | Kalhar to Badoh. |
| | 7th | Halt at Badoh. |
| | 8th-9th | Badoh to Gwalior <i>via</i> Kalhar. |
| | 9th | Gwalior to Shivpuri. |
| | 10th | Halt at Shivpuri. |
| | 11th | Shivpuri to Narwar and back. |
| | 12th | Shivpuri to Gwalior. |
| | 14th-15th | Gwalior to Mhow. |
| | 15th | Mhow to Sardarpur. |
| | 16th | Sardarpur to Tanda. |
| | 17th | Tanda to Bagh. |

| Year and month. | Date. | Movements and Halts. |
|-----------------|-----------|--|
| 1923. | | |
| December. | 18th-19th | Halt at Bagh. |
| | 20th | Bagh to Sardarpur. |
| | 21st | Sardarpur to Mhow. |
| | 22nd-23rd | Mhow to Gwalior. |
| 1924. | | |
| January ... | 11th | Gwalior to Satanwada. |
| | 12th | Satanwada to Narwar. |
| | 13th-14th | Halt at Narwar. |
| | 15th | Narwar to Satanwada. |
| | 16th | Satanwada to Mohana. |
| | 17th | Mohana to Gwalior. |
| | 22nd | Gwalior to Agra. |
| | 23rd | Agra to Gwalior. |
| | Do. | Gwalior to Satanwada. |
| | 24th | Satanwada to Narwar. |
| | 25th-27th | Halt at Narwar. |
| | 28th | Narwar to Satanwada. |
| | 29th | Satanwada to Gwalior. |
| February. | 2nd-3rd | Gwalior to Badoh and back to Kalhar. |
| | 4th | Kalhar to Ujjain. |
| | 5th | Ujjain to Kaliadeh and back. |
| | 6th | Ujjain to Sardarpur <i>via</i> Mhow. |
| | 7th | Sardarpur to Tanda. |
| | 8th | Tanda to Bagh. |
| | 9th-15th | Halt at Bagh. |
| | 16th | Bagh to Tanda. |
| | 17th | Tanda to Sardarpur. |
| | 18th | Sardarpur to Mhow. |
| | 18th-19th | Mhow to Bhilsa <i>via</i> Ujjain. |
| | 19th | Bhilsa to Udaygiri and back. |
| | 20th | Bhilsa to Gwalior. |
| April ... | 9th-10th | Gwalior to Chanderi <i>via</i> Lalitpur. |
| | 11th | Halt at Chanderi. |
| | 12th | Chanderi to Fatehabad and back. |
| | 13th | Chanderi to Bhilsa <i>via</i> Lalitpur. |
| | 14th | Bhilsa to Chirodia and back. |
| | 15th | Bhilsa to Udaypur <i>via</i> Baret. |
| | 16th | Halt at Udaypur. |
| | 17th | Udaypur to Basoda. |
| | 18th | Basoda to Udaypur. |
| | 19th | Udaypur to Badoh. |
| | 20th | Halt at Badoh. |
| | 21st-22nd | Badoh to Gwalior <i>via</i> Kalhar. |
| | 27th-28th | Gwalior to Goona. |
| | 29th | Halt at Goona. |
| | 30th | Goona to Shivpuri. |
| May ... | 1st | Shivpuri to Surwaya. |
| | 2nd | Surwaya to Shivpuri. |
| | 3rd | Shivpuri to Gwalior. |

APPENDIX B.

Statement of Monuments conserved in Samvat 1980.

| Serial No. | Place. | Name of monument. | AMOUNT SANCTIONED. | | | AMOUNT SPENT. | | | REMARKS. |
|------------|---------|--------------------|--------------------|------------------|--------------------|-------------------|------------------|-------------------|----------|
| | | | Current year. | Last year. | Total. | Current year. | Last year. | Total. | |
| | | | Rs. a. p. | Rs. a. p. | Rs. a. p. | Rs. a. p. | Rs. a. p. | Rs. a. p. | |
| 1 | Badoh | Gadarmal Temple | 618 0 0 | 1,977 15 6 | 2,595 15 6 | 542 8 6 | 1,975 12 3 | 2,518 4 9 | |
| 2 | Ranod | Khokhai Monastery | 299 8 3 | 1,544 15 0 | 1,844 7 3 | 299 8 3 | 1,503 5 0 | 1,802 13 3 | |
| 3 | Bagh | Copying Frescoes | 2,700 0 0 | 736 5 3 | 3,436 5 3 | 2,355 15 5 | 736 5 3 | 3,092 4 8 | |
| 4 | " | Clearance of Caves | 1,210 0 0 | ... | 1,210 0 0 | 1,205 2 9 | ... | 1,205 2 9 | |
| 5 | Bhilsa | Udaygiri Caves | 10 0 0 | ... | 10 0 0 | 9 3 0 | ... | 9 3 0 | |
| 6 | Udaypur | Udayesvar Temple | 4,571 0 0 | ... | 4,571 0 0 | 2,342 6 3 | ... | 2,342 6 3 | |
| 7 | Badoh | Dasavatar Temple | 96 0 0 | ... | 96 0 0 | 95 10 0 | ... | 95 10 0 | |
| 8 | Bhilsa | Khamb-Baba | 8 0 0 | ... | 8 0 0 | 8 0 0 | ... | 8 0 0 | |
| 9 | Badoh | Solakhambi | 187 0 0 | ... | 187 0 0 | 167 9 6 | ... | 167 9 6 | |
| 10 | " | Jain Temple | 350 0 0 | ... | 350 0 0 | 315 10 6 | ... | 315 10 6 | |
| 11 | Bhilsa | Gumbazka Maqbara | 10 0 0 | ... | 10 0 0 | 3 11 6 | ... | 3 11 6 | |
| 12 | Surwaya | Gadhi | 25 0 0 | ... | 25 0 0 | 24 11 6 | ... | 24 11 6 | |
| | | TOTAL | 10,084 8 3 | 4,259 3 9 | 14,343 12 0 | 7,370 0 11 | 4,215 6 6 | 11,585 7 5 | |

APPENDIX C.

Statement of Monuments Listed in Samvat 1980.

| No. | District. | Place. | Name of Monument. | Class. | Remarks. |
|-----|-----------|--|---|--------|--|
| 1 | Bhilsa. | Amera or Murtizana-gar (near Udaypur). | An old tank with stone built dam. | III. | |
| 2 | " | " | A Sanskrit inscription belonging to this tank but now lying loose on the slope of hill close by. | I. | Removed to Museum. |
| 3 | " | " | A small ruined shrine known as Vedi on the slope of hill near the above named tank. | III. | |
| 4 | " | " | Remains of another temple also known as Vedi about $\frac{1}{2}$ mile to the north-west of the village. | III. | |
| 5 | " | Chirodia. | Site of an old mediaeval temple now converted into a <i>kachcha</i> platform where some old carvings are placed. | II. | |
| 6 | " | " | Two rather good sculptures of Ganesa and Yama on the platform mentioned above. | II. | Worth being removed to Museum. |
| 7 | " | Pathari. | A monolithic pillar (inscribed) | I. | |
| 8 | " | " | A monolithic gigantic boar unfinished | II. | |
| 9 | " | Sunari. | Two loose sculptures :—(1) Buddha Avatara of Vishnu and (2) Lakshmi Narayana near the ruins of a shrine on the north outskirts of village on the road side. | II. | The sculpture of Buddha Avatara is removed to Museum |
| 10 | " | Udaypur. | A small ruined shrine near Sitala Mata Mandir. | III. | |
| 11 | " | " | A huge but unfinished sculpture on a boulder of rock locally known Rawan Tor (रावण टोर) about a mile to south of village near a stone quarry. | II. | |
| 12 | Esagarh. | Chanderi. | Tomb known as Bahadurjika Mazar on the road to Katighati (on the bank of the Dhobi Talao). | III. | |
| 13 | " | " | An interesting Sati stone near above | II. | |
| 13A | " | Goona. | Rest house in which a few sculptures of an old Rama or Vishnu temple have been built. | III. | |
| 14 | Gwl.-Gird | Mohana. | Three inscribed Sati pillars one of which is dated in V. Samvat 1462. | III. | |
| 15 | Narwar | Kachhama. | Vestiges of a fortified village or town | III. | |
| 16 | " | " | An old Masjid | II. | |
| 17 | " | Narwar Fort | Building known as Kachehri | II. | |

| No. | District. | Place. | Name of Monument. | Class. | Remarks. |
|-----|-----------|-------------|---|--------|------------------------|
| 18 | Narwar. | Narwar Fort | Ladau Bungala | II. | |
| 19 | " | " | Chhip Mahal | II. | |
| 20 | " | " | Makaradhvaj Tal with an interesting slab of sculpture. | II. | |
| 21 | " | " | Badi Masjid with three Persian and five Hindi inscriptions. | II. | |
| 22 | " | " | Roman Catholic chapel and cemetery ... | II. | |
| 23 | " | " | Rewa Kund | II. | |
| 24 | " | " | Sagar Tal | II. | |
| 25 | " | " | Chandan Talaiya | II. | |
| 26 | " | " | A small mosque | II. | |
| 27 | " | " | Devi's temple | II. | |
| 28 | " | " | Madarshah ki Dargah | II. | |
| 29 | " | " | Mahals in the southern portion of the Fort... | II. | |
| 30 | " | " | A mosque near Hawa Paur | II. | |
| 31 | " | " | An old gun (No. 18) known as Fateh Jung. length 10'10", diameter near mouth 10½" bears a Hindi inscription in 4 lines. — | I. | |
| 32 | " | " | An old gun named Ramaban, length 10', needle at back 1' 6", circumference 3' 8", diameter of aperture 4½". | I. | |
| 33 | " | " | An old gun named Narwarban length 16'6" including needle, circumference near mouth 3'10½" and near eye 6", diameter of aperture 5½". | I. | |
| 34 | " | " | Alamgiri Darwaza ... | II. | } on the eastern road. |
| 35 | " | " | Saiyadonka " ... | II. | |
| 36 | " | " | Piran Paur ... | II. | |
| 37 | " | " | Hawa Paur ... | II. | |
| 38 | " | " | Dholya or Dulha gate on the western side, now not in use. | II. | |
| 39 | " | " | Urwahi gate on the western road ... | II. | |
| 40 | " | " | A Gaumukha near above | II. | |
| 41 | " | " | A shaking kiosque known as Halna Bungala | III. | |
| 42 | " | " | A kiosque on the western rampart known as Rewa Chhatri. | III. | |
| 43 | " | " | An old gun near Rewa Chhatri (No. 33) with a tiger's face, length 10'10", diameter near mouth 1', bears a Hindi inscription in 7 lines which gives 'Satru-Samhar' as the name of the gun. | I. | |

| No | District. | Place. | Name of Monument. | Class. | Remarks. |
|----|-----------|--------------|--|--------|--------------------|
| 44 | Narwar. | Narwar Fort. | An inscribed Sati stone on the southern bank of the Makaradhvaj Tal, dated V. Samvat 169 (3). | III. | |
| 45 | " | " | A <i>Baodi</i> or step well near Makaradhvaj Tal, diameter 27' bears an inscription, dated in V. Samvat 1687. | III. | |
| 46 | " | Town. | An Armenian tomb with Portuguese (?), Persian and Hindi inscriptions in a field belonging to Bhagwanlal Panda near the eastern city wall. | II. | |
| 47 | " | Pipria. | (About $\frac{1}{2}$ mile north from the <i>Jharna</i> on the table-land above the <i>Ghati</i> through which the old road between Narwar and Shivpuri passes). Two images of Hanumat (life size) out of which one is well carved. | III. | |
| 48 | " | " | Ruins of shrine among which is a mutilated but well-carved image of Trimurti. | III. | |
| 49 | " | Satanwada. | An old empty (Mahadeo) temple with plain masonry to the north-east of village. | II. | |
| 50 | " | " | An old well in front of the above temple ... | III. | |
| 51 | " | " | An old memorial pillar half buried in ground on the boundary dam of a paddy field to the west of village. | III. | |
| 52 | " | " | A Hindi inscription of the reign of Shah Jahan stuck up in a house on the north-west outskirts of village. | II. | |
| 53 | " | " | Sculpture in relief of a pair of Nagas on a slab on the bank of a small old tank on the eastern outskirts of the village. | II. | Removed to Museum. |
| 54 | " | " | Remnants of a Vishnu temple of about the 10th or 11th century. The door frame and four pillars of the Mandapa are standing carrying beams. | III. | |
| 55 | " | " | Site of another temple near above ... | III. | |
| 56 | " | " | Some old sculptures (well carved but now mutilated) collected in a modern room a few feet to the west of the Vishnu temple. | III. | |
| 57 | " | " | Some fragments of sculptures lying scattered outside the room. | III. | |
| 58 | " | " | Carved pillars and other architectural pieces strewn about in the village and its northern outskirts. | III. | |
| 59 | " | " | A memorial pillar carved in the usual way, lying prostrate about 300 yards towards the north-east of the village. | III. | |

| No. | District. | Place. | Name of Monument. | Class. | Remarks. |
|-----|-----------|---|--|--------|----------|
| 60 | Narwar. | Satanwada. | Four Sati stones about $1\frac{1}{2}$ mile to the south-west of village on road to Shivpuri. One bears inscription, dated V. Samvat 1521. | III. | |
| 61 | " | Sikandarpura 1 mile north of Narwar Town. | Two ruined Armenian tombs with Portuguese (?) and Persian inscriptions in a field owned by Kharga Kachhi, to the right of the road to Magroni. | II. | |
| 62 | " | Jharna on the Satanwada Narwar Road 4 miles from Satanwada. | Pile of ruins of a huge 11th century temple probably with a number of attendant shrines. There is an image of Hanumat standing on a platform, and a number of half mutilated carvings in the debris. | III. | |

22657

APPENDIX D.

List of Inscriptions copied or noticed in Samvat 1980.

| Serial No. | District. | Place. | Object inscribed. | Number of lines. | Script. | Language. | Date. | Name of Ruler. | Purport. | REMARKS. |
|------------|-----------|----------|---|------------------|------------|-----------|--|---------------------------|---|---|
| 1 | Bhilsa. | Amara. | A loose stone lying on the slope of a hill near an old ruined tank. | 23+1 =24 | Old Nagari | Sanskrit. | V. S. 1151 Asbadha Sudi 7 = Friday, 23rd June 1094 | Naravarman (Paramara). | Records the construction of a tank by a Brahmana named [Vi] krama. | 23 lines are engraved regularly. Another line of two or three letters only is engraved at the end. (This stone is now removed to Gwalior Arch. Museum). This record is engraved on the raised border of the same stone as No. 1. But the two inscriptions are separate. Their languages also differ. But to judge from characters they are contemporary. |
| 2 | " | " | On the raised border of the same stone as above. | 4 | " | Prakrit. | ... | " | Purport not intelligible. | The date evidently omits the figures expressing the century. It is perhaps to be read as स. १११. |
| 3 | " | Badoh. | On a door jamb of a cell in Jaina temple. | 4 | " | Sanskrit. | V. S. [11] 13 | ... | Is a pilgrim's record. It reads ॐ स्वस्ति श्री दादस [क] मंडले आचार्य केवळि [ददिजे?] मूपचंद्रस्य ॥ स. १३ [स] मे. | The date evidently omits the figures expressing the century. It is perhaps to be read as स. १११. |
| 4 | " | " | On another door jamb of a cell in Jaina temple. | 3 | " | " | V. S. 1134. | ... | Is also a pilgrim's record. Text: स्वस्ति श्रीदेवचंद्र आचार्य मंत्र वादिन संमत ११३४. | |
| 5 | " | Udaypur. | On a Sati stone. | 7 | Nagari | Hindi. | V. S. 1698. Saka 1563. | ... | Rudely written. Illegible, appears to record a Sati in the family of a <i>chaudhari</i> at Udaypur. | Both these inscriptions are engraved on the same stone but are in different hands. |
| 6 | " | " | On the same stone as above. | 2 | " | " | ... | ... | Illegible. | |

| 7 | " | Pathari. | On a large monolithic column. | 38 | Old Nagari | Sanskrit. | V. S. 917 | Parabala Rashtrakuta | Consists of two parts. Part I lines 1 to 31. Records the construction of a temple of Sauri. (Krishna or Vishnu) by Parabala, a king of (some branch of) the Rashtrakuta dynasty. The second part is very much damaged and hence illegible. | Published by Kielhorn on pp. 248-256, <i>Ep. Ind.</i> , Vol. IX. |
|----|----------|----------|---|-----|------------|-----------|-----------------|----------------------|--|---|
| 8 | " | Udaypur. | On a stone built into a wall outside the east entrance to the compound of the Udayesvar temple. | 12 | " | " | V. S. 13 [1] 1. | Jayasimha of Malwa. | As the latter half of the inscription is very much damaged the later portion is illegible. It appears to have registered a grant. | Noticed by Prof. Kielhorn in <i>Ind. Ant.</i> , Vol. XVIII, p. 341, and again in <i>Ibid.</i> , Vol. XX, p. 84 footnote. |
| 9 | " | " | On a pillar in the east Porch of the Udayesvar temple. | 5 | " | " | V. S. 1222 | ... | Registers grants by Thakur Sri Chinada on the occasion of अक्षय्य तृतीया. | This inscription is similar to but distinct from inscription B. Edited by Prof. Kielhorn on pp. 343-44 of <i>Ind. Anti.</i> , Vol. XVIII. |
| 10 | " | " | On a fragment of stone found during the clearance of the temple precincts. | 13 | " | " | ... | ... | This is a mere fragment of an inscription. The object of the record cannot be made out from this small piece. The date is not available in the existing portion. The characters are Nagari of the 11th or 12th century. | |
| 11 | Gird ... | Mohana. | On a Sati pillar near Dak Bungalow. | ... | Nagari. | Sanskrit. | V. S. 1462. | ... | Mentions रामेश्वर, चंडी, [से] वादिस्य, वैरिसिंह. | Not copied being mostly illegible. |

| Serial No. | District. | Place. | Object inscribed. | Number of lines. | Script. | Language. | Date. | Name of Ruler. | Purport. | REMARKS. |
|------------|-----------|--------------|---|------------------|---------|-----------|-------------|------------------------|---|------------|
| 12 | Gird. | Narwar Fort. | On a gun near Rewa Chhatri. | 7 | Nagori. | Hindi. | V. S. 1753. | Jayasimha (of Jaipur) | Text:—श्री महाराजाधिराज [श्री] राजा जयसिंघजु देव की सरकार[हैं] कान मरुत [१] श्री की तोप का नाउ सनुसंधार अगहन सुव १२ संवत १७५३. | |
| 13 | " | " | On a stone slab in a Baodi near Makardhvaj Tal. | ... | " | Hindi. | V. S. 1687. | .. | ... | |
| 14 | " | Narwar Fort. | On a gun ... | 4 | " | Hindi. | V. S. 1753. | Jayasimha (of Jaipur). | Text:—श्री महाराजाधिराज श्रीराज जौसिंघजु देव की सीरावरा में (सरकार है) तोप को नाउ फतेजंग संवत १७५३ कुवर मुदी १०. | |
| 15 | " | Satanwada. | On a Sati stone lying prostrate about 1½ miles to south-west of village near Shivpuri road. | ... | " | Sanskrit. | V. S. 1521. | ... | Mentions सतनवाडा as the name of village. The names of the Sati and her husband are given but are illegible. The full date is संवत १५२१ श्रेष्ठ सु. १५ सोमवाररे. | |
| 15 (A) | " | Narwar Fort. | Over the niches in the main hall of the big mosque. | ... | Naskh. | Persian. | A. H. 912 ? | Sikandar Shah Lodi. | There are three inscriptions. One of these (central) is a Quran text. That on the right is in prose and that on the left is in poetry. They are thickly covered with lichens and therefore are not quite legible at present. One records the construction of the mosque in commemoration of victory by Sikandar Shah in A. H. 912 (?) | Not copied |

| | | | | | | | | | |
|----|--------|--|---|-----|------------|---------------------------|-----|---|-------------------------------|
| 16 | Narwar | Narwar Fort. | Pillars borrowed from older Hindu temples and used in the big mosque. | ... | ... | ... | ... | These are five inscriptions. They appear to be mostly names of masons who dressed them. | Not copied. |
| 17 | " | Sikandar-pura hamlet 1 mile north of Narwar. | On a tomb | ... | Nastaliq. | Persian. | ... | سلیمان بیگ ولد مظفر بیگ "Sulaimanbeg s/o. Muzaifarbeg. | |
| 18 | " | " | " | ... | Portugese | ... | ... | The same as above (?) | |
| 19 | " | " | On another tomb | ... | Persian. | A.H. 1179 = A.C. 1766. | ... | The inscription is in 3 parts. The first part is not legible. The second is eulogy of God and the third records that the tomb is sacred to the memory of Mary, wife of Sulaimanbeg Armani (Armenian), who died on the 15th Ramzan A.H. 1179 (Saturday, 15th February 1766 A.C.) | |
| 20 | " | " | On the same tomb as above. | ... | Portuguese | ... | ... | Do. (?) | Not copied or deciphered yet. |
| 21 | " | Narwar Town. | On a tomb inside the east city wall in a field owned by Baghwanlal Panda. | ... | Portuguese | ... | ... | ... | |
| 22 | " | " | Do, on top | ... | Nastaliq. | Persian. | ... | Text:— بسم الله خواهی مدد از روح بزرگان یابی | Not yet copied. |

Trans. In the name of God. Invoke help and it shall come from the soul of ancestors.

| Serial No. | District. | Place. | Object inscribed. | Number of lines | Script. | Language. | Date. | Name of Ruler. | Purport. | REMARKS. |
|------------|-----------|--------------|--|-----------------|-----------|-----------|--------------------------|----------------|---|----------|
| 22 A | Narwar. | Narwar Town. | On the same tomb on the right side. | .. | ... | Persian. | A. H. 1153 = 1740 A. C. | ... | <p>Text:— تیر ازکیل بن یوغوس جلفای پادری عیسویان ارمنی که در نماز خان شاوالی بسپردند از آنجا به اتفاقات در شهر سنه ۱۱۵۳ هجری به هندوستان در فرور رسیدند و بعد استقامت ده سال در عمر</p> <p>Trans. Ter Ezakil, son of Pagoth, descendent of Jal-phai, bishop of Armenian Christians, who were living in church (monastery?) of Shubali, came by chance to Narwar in India in the year A. H. 1153 and after a stay of ten years, at age</p> | |
| 22 B | " | " | On the base of the same tomb as above. | ... | Nastaliq. | Persian. | A. H. 1163 = A. C. 1750. | ... | <p>Text:— هفتاد و دو در سال ۱۱۶۳ هجری به هفتم ماه جمادی الثانی مطابق سنه ۱۷۵۰</p> <p>Trans. 72 in the year 1163 A. H. 17th of the month Jamadi-us-sani corresponding to the year 1750.</p> | |

| | | | | | | | | |
|---------|---|---|---|-----|--------|-----|-----|--|
| 22 C | " | " | On the left side of the same Armenian tomb. | ... | " | ... | ... | Text:— تولد حضرت مسیح کرد پرواز از تشمن خاک روح پاکش باوج جلیبین و پسوانش جسم این بزرگوار تاب شش صلا در این صزار داشت درهنگی بندر رسانیدند و این نشان باقی است Trans.—from the birth of Jesus Christ flew from the earthen home the holy soul to the enlightened high. His sons after keeping the re- mains for six months in this tomb sent them to the Hoogly port and left this as a memorial. |
| 23 | " | " | On the sides of the same tomb as above. | ... | Hindi. | ... | ... | [१] तेर अद्दाकैल बटा पोगस का जलफाई अरमनीयो क नादरी [नभाज- बाने] सावली में हमेसा रहे, से० १७९७ में हिंदुस्थान में आये बरस दस नरवर में रहे सम्बत १८०७ में बहत्र ७२ बरस के उमर में [२] देह छोड़ी और महिना ६ इनका तावत इस कबर में रहा, फिर इनके (बटो) ने इस तावत को हुगली बन्दर को पहुँचाया और यादगारी के वास्ते यह जगह इनका नीसान बना रहा है ॥ |

APPENDIX E.

List of Coins examined, in Samvat 1980.

| No. | King or Dynasty. | Description. | Metal. | Number of Coins Examined. | Remarks. |
|-----|------------------|---|---------|---------------------------|---|
| 1 | ... | Obverse. | Silver. | 330 | The coins were found as Treasure-trove at village Ghataoda in Dasai Jagir. There are 3 different sizes. |
| | | Rude imitation of king's bust to right. | | | |
| 2 | ... | Reverse. | Copper. | 1 | Found in the same lot, as above. |
| | | Lines and dots suggesting the Sassanian fire-altar. | | | |
| | | Punch marked | | | |
| | | Obverse. | | | |
| | | Rayed sun and a rude human figure ... | | | |
| | | Reverse. | | | |
| | | Marks are indistinct | | | |

APPENDIX F.

List of Antiquities added to Archaeological Museum in Samvat 1980.

| No. | Find Spot. | Description. | Remarks. |
|-----|--|--|--------------------------------|
| 1 | Amera near Udaypur (Dist. Bhilsa) | A stone inscription in Sanskrit, dated Vikram Samvat 1151. | 2'7" x 3' including border. |
| 2 | Badoh (Dist. Bhilsa). | Piece of an ornamental frame of a sculpture of Vishnu. | 2'6" x 6" |
| 3 | " | Another sculpture of Vishnu | 2'2" x 1'7" |
| 4 | " | Bust of Indra holding Vajra * in one surviving hand. | 1'9" x 1'6" |
| 5 | " | Upper half of an image of Siva | 2'5" x 2' |
| 6 | " | A mother and child | 2' x 1' |
| 7 | " | A musician playing on a tabor | 3'8" x 1'4" |
| 8 | " | A figure of a soldier wielding sword and shield perhaps a fragment of bigger sculpture of the sun god. | 1' x 8" |
| 9 | " | Bust of a woman | 1'2" x 1' |
| 10 | " | " " without head | 1' x 1' |
| 11 | " | A dog's head | 10" x 8" |
| 12 | " | Bust of a woman | 1'7" x 1'5" |
| 13 | " | Bust of Varahi | 1'3" x 1'4" |
| 14 | " | Bust of a woman with a halo behind it ... | 1'6" x 1'5" |
| 15 | " | Torso of a woman... .. | 2'6" x 1' |
| 16 | " | " " | 1'6" x 1'5" |
| 17 | " | Fragment of an image of Kubera... .. | 1'6" x 8" |
| 18 | " | Torso of a man | 1'6" x 8" |
| 19 | " | An archer (fragment of a bigger sculpture) of the sun god. | 1' x 1" |
| 20 | " | A conch (fragment of a moon stone ?) ... | 1'5" x 1' |
| 21 | " | A bracket with dwarfs | 1'2" x 8" x 7" |
| 22 | " | A slab with the eight Dikpalas carved in relief. | 7'1" x 1'10" |
| 23 | " | A hunting scene | 5'3" x 1' |
| 24 | " | Head of a woman | 9" |
| 25 | " | Head of a buffalo | 7" |
| 26 | " | Head of a lion | 4" |

| No. | Find Spot. | Description. | Remarks. |
|-----|--|---|--------------------|
| 27 | Badoh (Dist. Bhilsa). | Head of an animal... .. | 4" |
| 28 | " | Torso of a woman | 9" |
| 29 | " | Bust of a woman | 7" |
| 30 | " | Figure of Garuda | 11" |
| 31 | Kota (Udhamdeka) (Dist. Narwar). | Kartikaya standing | 3'9" × 1'10" |
| 32 | " | Siva in his terrific form (Rudra) ... | 6' × 2'10" |
| 33 | " | Siva standing | 4'3" × 1'10" |
| 34 | " | A standing goddess with traces of three heads which have broken off (probably Mahesvari, one of the seven mothers). | 4'2" × 1'8" |
| 35 | " | Kaumari | 4' × 1'9" |
| 36 | Narwar Fort. | A sculpture of Vishnu standing with an ornamental frame with the ten <i>Avataras</i> in miniature. | 4' × 2'5" |
| 37 | Padhavli (Dist. Tawarghar). | Surya seated | 2'7" × 1'7" |
| 38 | " | Bust of Trimurti (in a panel) | 3'7" × 3'7" |
| 39 | " | Ganesa dancing (in a panel) | 2'10" × 2' |
| 40 | " | Wedding of Siva and Parvati (in a panel). | 3'7" × 3'7" |
| 41 | " | Back rest of a seat with an elephant's head | 2'4" × 2'5" × 1'6" |
| 42 | " | A carved ceiling slab | 3'8" × 1'6" |
| 43 | " | Pinnacle (in the form of a jar) of a Sikhara. | 3'9" × 1'6" |
| 44 | " | Upper portion of Parvati practising penance. | 1'7" × 1'7" |
| 45 | Satanwada (Dist. Narwar). | A Naga sculpture | 5'9" × 11" |
| 46 | Sunari near Udaypur (Dist. Bhilsa). | A sculpture of Buddha-Avatar (Hindu)... | 4'7" × 2'5" |

Paintings.

Five coloured copies of Bagh frescoes. (For details see Appendix G.)

Eight drawings in outline of " " "

One miniature Mughal painting having for its subject a musical dance (natch) before a Muhammadan prince attended by courtiers and a servant. Size 14½" by 10½".

Coins.

Twelve Silver coins known as Gadhiya four each of three different sizes. (See Appendix E).

One Copper coin punch marked.

List of Copies of Frescoes at Bagh Made in Samvat 1980.

| Serial No. | Description shewing locality and subject. | Dimensions. | Artist who copied. |
|--------------------------|---|-----------------|---|
| Copies in Colour. | | | |
| 1 | Music in the air from the wall of verandah Cave No. 4 ... | 4' 11" × 2' 11" | M. S. Bhand. |
| 2 | Elephant procession " " " ... | 9' 9½" × 4' 6¾" | Mainly by A.B. Bhonsle, assisted by Apte, Bhand and Wankar. |
| 3 | Musical dance " " " ... | 4' 7½" × 3' 8" | Bhonsle. |
| 4 | Horse procession " " " ... | 8' 4" × 4' 6¾" | Apte. |
| 5 | A discourse " " " ... | 4' 6" × 2' 6" | " |
| Copies in Outline | | | |
| 6 | Part of frieze on right wall, interior Cave No. 4 ... | 4' 7" × 2' 6½" | Apte. |
| 7 | Decoration on a pillar " " " ... | 3' 4" × 11" | Wankar. |
| 8 | Part of frieze on left wall " " " ... | 3' 2" × 2' 2½" | Apte. |
| 9 | Two decorative patterns from a pillar, interior Cave No. 4... | 4' 6½" × 1' 9½" | " |
| 10 | Three panels of ceiling decorations and Figure of a worshipper on a cell in Cave No. 3. | 2' 11" × 2' 9" | " |
| 11 | Two decorative patterns on a pillar in Cave No. 4 ... | 4' 6½" × 4' | " |
| 12 | Decorative pattern on a pillar in Cave No. 4 ... | 2' 6" × 11" | Wankar. |
| 13 | Part of frieze with two bulls on left wall, interior Cave No. 4 | 8' 9" × 4" | Apte. |

APPENDIX H.

List of Photographs taken in Samvat 1980.

| Serial No. | Local No. | Locality. | Subject. | Size of Negative. |
|--------------------------|-----------|------------------|---|-------------------|
| District Bhilsa. | | | | |
| 1 | 1 | Badoh ... | Jain temple before conservation, showing jungle, etc., from South-West. | Full. |
| 2 | 2 | " ... | " " " " " " North-West. | " |
| 3 | 3 | " ... | " " interior, before conservation from North-West... | " |
| 4 | 4 | " ... | " " " after conservation, from North ... | " |
| 5 | 5 | " ... | Solah Khambi showing jungle, etc., before conservation from South-West. | " |
| 6 | 6 | " ... | Solah Khambi after conservation, from South-West ... | " |
| 7 | 7 | " ... | Gadarinal temple, general view after repairs from North-West. | " |
| 8 | 8 | " ... | " " general view after repairs from North... | " |
| 9 | 9 | " ... | " " main temple from North-East ... | " |
| 10 | 10 | " ... | " " showing porch and basement of main temple from East. | " |
| 11 | 11 | " ... | " " " " " " from West | " |
| 12 | 1 | Pathari ... | Monolith (pillar) from West ... | " |
| 13 | 2 | " ... | Unfinished sculpture of Varaha to the east of village ... | " |
| 14 | 1 | Jajon ... | Memorial pillar near custom post on road ... | Half. |
| 15 | 1 | Murtizanagar ... | A ruined shrine known as Vedi ... | " |
| 16 | 1 | Udaypur ... | Udayesvar (Nilkantheswar) temple, back view from West ... | " |
| 17 | 2 | " ... | " " before repairs, showing trees growing on porch and Vedi. | " |
| District Esagarh. | | | | |
| 18 | 1 | Chanderi ... | Bahadurjika Mazar, general view from North-West ... | " |
| 19 | 2 | " ... | Sati stone in compound of Bahadurjika Mazar ... | " |
| 20 | 1 | Fatehabad ... | Koshak Mahal interior from West... ... | Full. |
| 21 | 2 | " ... | " " showing arches and ceiling on ground floor ... | " |
| 22 | 3 | " ... | " " " " " " " " " " | " |
| 23 | 4 | " ... | " " " " " " " " 1st floor. | " |

| Serial No. | Local No. | Locality. | Subject. | Size. |
|------------|-----------|-----------------------|---|-------|
| 24 | 5 | Fatehabad. | Koshak Mahal interior showing arches, and ceiling 2nd floor. | Full. |
| | | District Gird. | | |
| 25 | 1 | Gwalior ... | Muhammad Ghaus' tomb, general view from North-East ... | " |
| 26 | 1 | " Fort ... | Gujari Mahal, interior view of North-West corner ... | " |
| 27 | 1 | " Museum. | Elephant with rider, from Besnagar ... | " |
| 28 | 2 | " " ... | Vishnu and Lakshmi riding on Garuda, from Gwalior Fort. | " |
| 29 | 3 | " " ... | Ashtabhuja Devi standing, from Besnagar ... | " |
| 30 | 4 | " " ... | Lion capital, from Udaygiri ... | " |
| 31 | 5 | " " ... | " " " " another view ... | " |
| 32 | 6 | " " ... | Yogini standing, from Kota ... | " |
| 33 | 7 | " " ... | Buddha seated, from Kota ... | " |
| 34 | 8 | " " ... | Parvati standing, from Rairu ... | " |
| 35 | 9 | " " ... | Maheshvari with baby, from Mohanpur ... | " |
| 36 | 10 | " " ... | Outline of fresco painting on Bagh Caves— scene of sorrow. | " |
| 37 | 11 | " " ... | " " discourse ... | " |
| 38 | 12 | " " ... | " " music in the air ... | " |
| 39 | 13 | " " ... | " " dance No. 1 ... | " |
| 40 | 14 | " " ... | " " dance No. 2 ... | " |
| 41 | 15 | " " ... | " " horse procession ... | " |
| 42 | 16 | " " ... | " " elephant procession ... | " |
| 43 | 17 | " " ... | " " supplement of horse procession ... | " |
| 44 | 18 | " " ... | " " " of elephant procession ... | " |
| 45 | 19 | " " ... | " " Chaitya ... | " |
| 46 | 20 | " " ... | " " patterns on pillars ... | " |
| 47 | 21 | " " ... | " " a wall frieze ... | " |
| 48 | 22 | " " ... | " " another " ... | Half. |
| 49 | 23 | " " ... | " " ceiling and frieze ... | " |
| 50 | 24 | " " ... | " " ceiling only ... | " |
| 51 | 25 | " " ... | A (painted) copy of Bagh fresco ... | " |

| Serial No. | Local No. | Locality. | Subject. | Size of Negative. |
|-------------------------|-----------|----------------|---|-------------------|
| 52 | 26 | Gwalior Musum. | Yogini standing, fom Mandasor ... | Half. |
| 53 | 27 | " | " " another view ... | " |
| 54 | 28 | " | Ganapati, from Gadhi Barod ... | " |
| 55 | 29 | " | Indrani standing, from Kota ... | " |
| 56 | 30 | " | Two images in a panel, from Mandasor ... | " |
| 57 | 31 | " | Chaumukha, from Bhilsa ... | " |
| 58 | 32 | " | Kali standing, from Kota ... | " |
| 59 | 33 | " | Kubera standing, from Padhavli ... | " |
| 60 | 34 | " | Agni standing, from Kota ... | " |
| 61 | 35 | " | Chaumukha, from Mohanpur ... | " |
| 62 | 36 | " | " another view ... | " |
| 63 | 37 | " | " " " ... | " |
| 64 | 38 | " | Yogini standing, from Kota ... | " |
| 65 | 39 | " | Yama, from Kota ... | " |
| 66 | 40 | " | Varahi, from Kota ... | " |
| 67 | 41 | " | Fragment of sculpture, from Kota ... | " |
| 68 | 42 | " | Memorial pillar, from Gadhi Barod ... | " |
| 69 | 1 | Pawaya. | Site whence sculpture of Manibhadra was picked up, view from South. | Full. |
| 70 | 2 | " | Mound for excavation, view from North-East ... | " |
| 71 | 3 | " | " " " East ... | " |
| 72 | 4 | " | " " " West ... | " |
| District Narwar. | | | | |
| 73 | 1 | Kachhaua. | Mosque, view from East ... | Half. |
| 74 | 2 | " | " from South-West ... | " |
| 75 | 3 | " | " from North-West ... | " |
| 76 | 1 | Mubarikpur. | Maqbara on hill No. 1, from South-East ... | Full. |
| 77 | 2 | " | " " No. 2, from South-West ... | " |
| 78 | 1 | Narwar Fort. | Fort, distant general view from East ... | " |
| 79 | 2 | " | Kachehri from North-West ... | " |
| 80 | 3 | " | " Western portion from South-East ... | " |

| Serial No. | Local No. | Locality. | Subject. | Size of Negative. |
|------------|-----------|--------------|--|-------------------|
| 81 | 4 | Narwar Fort. | Kachehri, northern portion from South-West ... | Full. |
| 82 | 5 | " | " an arched doorway ,, ... | " |
| 83 | 6 | " | " interior view from inside ... | " |
| 84 | 7 | " | " back view ... | " |
| 85 | 8 | " | " a ceiling doorway ... | Half. |
| 86 | 9 | " | " a corner showing niches ... | " |
| 87 | 10 | " | " a pattern on a side wall of an arch ... | " |
| 88 | 11 | " | " the portion proposed for Dak Bungalow showing East face. | Full. |
| 89 | 12 | " | " interior showing arcade ... | " |
| 90 | 13 | " | " showing detail of plaster work ... | " |
| 91 | 14 | " | " showing detail of jali work ... | Half. |
| 92 | 15 | " | " Makaradhvaj Tal, showing a room on top having a sculpture, view from East. | Full. |
| 93 | 16 | " | " a sculpture from North-West ... | " |
| 94 | 17 | " | " one half of a sculptured slab ... | " |
| 95 | 18 | " | " the other half of the above slab ... | " |
| 96 | 19 | " | " another sculptured slab ... | Half. |
| 97 | 20 | " | Katora Tal, from North-East ... | Full. |
| 98 | 21 | " | Portuguese church, general view from S. East, | " |
| 99 | 22 | " | Prostrate goddess ... | " |
| 100 | 23 | " | A gun (known as Norwarban) ... | " |
| 101 | 24 | " | A large mosque, near Kachehri from North-East ... | " |
| 102 | 25 | " | Ladau Bungalow from North-East ... | " |
| 103 | 26 | " | Hawa Paur from North-East ... | " |
| 104 | 27 | " | The fallen Burj with steps and debris from East ... | " |
| 105 | 28 | " | Chhip ... | Half. |
| 106 | 29 | " | Map of Narwar Fort ... | Full. |
| 107 | 30 | " | " " " ... | Half. |
| 108 | 31 | Narwar Town. | Narwar Town, Bird's-eye-view from Fort ... | Full. |
| 109 | 32 | " | Ek-khambi Masjid ... | Half. |

| Serial No. | Local No. | Locality. | Subject. | Size of Negative. |
|-------------------------|-----------|-------------------------------|--|-------------------|
| 110 | 33 | Nawar Town. | Jait Khamb | Half |
| 111 | 34 | " | Chaukoni Baodi from South-West ... | Full. |
| 112 | 35 | Between Narwar and Magroni. | Mughal bridge over the Sindh, from North-East ... | " |
| 113 | 36 | Between Narwar and Satanwada. | Another bridge over the Sindh, Bird's-eye-view showing valley and bridge from top of hill. | " |
| 114 | 37 | " | " showing detail of arched openings of bridge. | " |
| 115 | 1 | Ranod. | Khokhai monastery after repair from North-East ... | " |
| 116 | 2 | " | " " " " " North-West ... | " |
| 117 | 3 | " | " " inscription ... | " |
| 118 | 1 | Satanwada. | Mahadeva temple from North-West ... | Half. |
| 119 | 2 | " | Vishnu temple from North-West ... | " |
| District Ujjain. | | | | |
| 120 | 1 | Kaliadeh. | Kaliadeh palace, view from South-East ... | Half. |
| 121 | 2 | " | " " " from South-West ... | " |
| 122 | 3 | " | " " " from North-West ... | " |
| 123 | 4 | " | A bridge over the Sipra river from North-West ... | " |
| 124 | 1 | Ujjain. | Jaisingh's Observatory after repairs, general view from West. | Half. |
| 125 | 2 | " | " " " " " from South. | " |
| 126 | 3 | " | " " " " " from North. | " |
| 127 | 4 | " | " " Digamsa Yantra ... | " |
| Miscellaneous. | | | | |
| 128 | 1 | Mathura Museum. | Fragment of Gandhara sculptures ... | Full. |
| 129 | 2 | " " | Bust of Bodhisatva, a Gandhara sculpture ... | " |

APPENDIX I.

List of Lantern Slides made in Samvat 1980.

| Serial No. | Object No. | Particulars. |
|-------------------|------------|---|
| Stupas. | | |
| 1 | 1 | Stupa No. 2 at Sanchi. |
| 2 | 2 | " 3 " |
| 3 | 3 | Stupa at Rajapur. |
| 4 | 4 | Dagoba at Khejadia Bhop. |
| 5 | 5 | Parts of Stupa Rail at Besnagar. |
| Gateways. | | |
| 6-7 | 1-2 | North gateway of great Stupa at Sanchi (Duplicate). |
| 8 | 3 | Torana pillar at Khilchipura. |
| 9-10 | 4-5 | Chhekhamba at Gyarpur (Duplicate). |
| 11 | 6 | Torana at Terhai. |
| 12 | 7 | Elephant gate (Man Mandir). |
| 13 | 8 | Badal Mahal at Chanderi. |
| Monoliths. | | |
| 14 | 1 | Asoka pillar Lauria Nandangarh. |
| 15 | 2 | Heliodorus Garuda pillar before repairs. |
| 16-17 | 3-4 | " " " after " |
| 18 | 5 | Yashodharman pillar A. at Sondni. |
| 19 | 6 | " " B. |
| 20 | 7 | Pillar at Pathari. |
| Capitals. | | |
| 21 | 1 | Palm Capital, Pawaya. |
| 22 | 2 | " " Besnagar. |
| 23 | 3 | Bell and rail capital at Besnagar. |
| 24 | 4 | Fish capital " |
| 25 | 5 | Bell and Lion capital at Udaygiri. |
| 26 | 6 | " " " Sarnath. |

| Serial No. | Object No. | Particulars. |
|------------------------|------------|--------------------------------------|
| Rock-cut Caves. | | |
| 27 | 1 | Chaitya Hall, Karli. |
| 28 | 2 | „ Cave No. 2, Bagh. |
| 29 | 3 | „ „ „ „ |
| 30 | 4 | Dagoba „ „ „ |
| 31 | 5 | Plan of Cave No. 4 at Bagh. |
| 32 | 6 | Pillar and frieze of Cave No. 4. |
| 33 | 7 | Restored pillar „ „ |
| 34-35 | 8-9 | Outline of painting „ „ (Duplicate). |
| 36 | 10 | Interior of Cave No. 5. |
| 37 | 11 | General view of caves at Udaygiri. |
| 38 | 12 | Caves Nos. 5 and 6 „ |
| 39 | 13 | Cave No. 19 „ |
| 40 | 14 | Door frame of Cave No. 4 at Bagh. |
| Temples. | | |
| 41 | 1 | Gupta Temple at Sanchi. |
| 42 | 2 | Model of Indo-Aryan Temple. |
| 43 | 3 | Mahadeva Temple, Jamli. |
| 44 | 4 | „ „ at Mahua. |
| 45 | 5 | Lakshmi Temple at Nimthur. |
| 46-47 | 6-7 | Temple at Udaypur (Duplicate). |
| 48 | 8 | „ „ back view |
| 49 | 9 | Bajra Math, Gyaspur. |
| 50 | 10 | Athkhamba „ interior view. |
| 51 | 11 | Gadarmal Temple, Badoh. |
| 52 | 12 | Sahdeva's Rath at Mamallapuram. |
| 53-54 | 13-14 | Telika Mandir, Gwalior (Duplicate). |
| 55 | 15 | Large Sas Bahu Temple, Gwalior. |
| 56 | 16 | „ Doorway. |
| 57 | 17 | „ Ceiling. |

| Serial No. | Object No. | Particulars. |
|-----------------------------------|------------|---|
| 58 | 18 | Temple No. 1 at Surwaya before repairs. |
| 59 | 19 | „ „ after „ |
| 60 | 20 | „ 2 „ „ „ |
| 61 | 21 | Doorway of temple No. 1 „ |
| 62 | 22 | Ceiling „ „ |
| 63 | 23 | Temple at Kadwaha. |
| Inscriptions. | | |
| 64 | 1 | Inscription on Heliodorus pillar, Besnagar. |
| 65 | 2 | „ Udaygiri Caves. |
| 66 | 3 | „ Khokhai Matha, Ranod. |
| 67 | 4 | „ „ (part only). |
| Buddhist Sculptures. | | |
| 68 | 1 | Buddha and his attendants |
| 69 | 2 | Dvarapalas |
| Hindu Sculptures. | | |
| 70 | 1 | Rudra Avatara. |
| 71 | 2 | Kartikeya. |
| 72 | 3 | Siva image from Mandasor. |
| Hindu Monasteries. | | |
| 73 | 1 | Surwaya monastery. |
| 74 | 2 | „ „ |
| 75 | 3 | „ „ |
| 76-77 | 4-5 | Ranod monastery (Duplicate). |
| 78 | 6 | „ „ |
| Sati and Memorial Pillars. | | |
| 79 | 1 | Sati stone, Kolaras. |
| 80 | 2 | Memorial pillar, Gadhi Barod. |
| Wells and Step-Wells. | | |
| 81 | 1 | Battisi Baodi, Chanderi. |
| 82 | 2 | Chopra, Ranod. |

| Serial No. | Object No. | Particulars. |
|------------|------------|---|
| 83 | 3 | Makaradhvaj Tal. |
| | | Forts. |
| 84 | 1 | Atter. |
| 85 | 2 | Narwar. |
| 86 | 3 | Gwalior. |
| 87 | 4 | Chanderi. |
| 88 | 5 | Pichhore (Narwar) Gadhi. |
| | | Palaces and Mahals. |
| 89 | 1 | Koshak Mahal, Fatehabad. |
| 90 | 2 | " " " |
| 91 | 3 | Panchamnagar Palace. |
| 92 | 4 | Man Mandir, Gwalior Fort. |
| 93 | 5 | " Interior, " |
| | | Mosques. |
| 94 | 1 | Jamah Masjid at Chanderi. |
| 95 | 2 | " Kolaras. |
| 96 | 3 | Jhinjharin Masjid, Ranod. |
| 97 | 4 | Jamah Masjid at Gwalior. |
| 98 | 5 | Masjid at Kachhava. |
| 99 | 6 | Bijamandal Masjid at Bhilsa. |
| | | Tombs. |
| 100 | 1 | Tomb of Muhammad Ghaus, Gwalior. |
| 101 | 2 | Rajakat Maqbara, Chanderi. |
| 102 | 3 | Bada Madarsa at " |
| 103 | 4 | Tomb Stone at Ranod. |
| 104-05 | 1-2 | Bridge on the Sindh between Satanwada and Narwar. |
| 106 | 3 | Confluence of the Sindh and Parwati. |
| | | Miscellaneous. |
| 107 | 4 | Welcome. |
| 108 | 5 | Good night. |
| 109 | 6 | Chhip in Narwar Fort. |

APPENDIX J.

List of Drawings Plotted during Sam vat 1980.

| No. | Place. | Description. | Scale. |
|-------------------------|-----------------|---|----------|
| District Bhilsa. | | | |
| 1 | Badoh ... | Gadarmal Temple, block plan including attendant shrines, compound, etc. | 12' = 1" |
| 2 | " ... | " " main temple... | 3' = 1" |
| 3 | " ... | Solah Khambi, plan | 6" = 1" |
| 4 | " ... | Jain temple, block plan | 6' = 1" |
| 5 | Udaypur ... | Udayeswar temple, sketch site plan. | |
| District Narwar. | | | |
| 6 | Narwar Fort ... | Kachehri buildings, block plan ... | 8' = 1" |
| 7 | " ... | Building proposed for Dak Bungalow, G. F. plan | 4' = 1" |
| 8 | " ... | " " " " 1st floor plan | 4' = 1" |
| 9 | " ... | Chhip or stone reservoir, ground plan | 2' = 1" |
| 10 | Narwar Town ... | Dehra or a covered hall containing Jain sculptures (sketch). | |

List of Books added to the Office Library in Samvat 1980.

| Serial No. | Title. | Remarks. |
|--|---|------------|
| Archæological Survey Reports and Memoirs. | | |
| 1 | Annual Report of the Archæological Department, Jammu and Kashmir State, for Samvat 1977 | Presented. |
| 2 | Archæological Survey of India, Annual Report, for 1920-21 | " |
| 3 | " " Ceylon, " " 1921-22 | " |
| 4 | Report of the Superintendent, Archæological Survey of Burma, for the year ending 31st March 1923. | " |
| 5 | Annual Report of the Mysore Archæological Department for 1923 ... | " |
| 6 | " " Watson Museum of Antiquities for 1922-23 ... | " |
| 7 | Memoirs of the Archæological Survey of India No. 14. | " |
| 8 | Report of the India Society for 1923 | " |
| Chronology. | | |
| 9 | Khare Jantri athava Sivakalina Sampurna Sakavali | Purchased |
| Epigraphy. | | |
| 10 | Epigraphia Indica, Vol. XVI, Part VII | Presented. |
| 11 | " " XVII " II | " |
| 12 | " " " " V | " |
| 13 | " " " " VI | " |
| 14 | " " " " VII | " |
| 15 | " " XVIII " IV | " |
| 16 | " Carnatica, Vol. II | " |
| 17 | " Indo-Moslemica for 1913-14 | Purchased. |
| 18 | Annual Report on Epigraphy for the year 1921-22 | Presented. |
| 19 | Epigraphia Indica, Vol. XVI, Part VI | " |
| 20 | Inscriptions at Shravana Belgola by R. Narsimhacharya | " |
| 21 | Epigraphia Indica, Vol. XVII, Part I, 1923 | " |
| 22 | " " " II | " |
| 23 | Annual Report on South Indian Epigraphy for 1923 | " |
| Dictionary. | | |
| 24 | English and Marathi Dictionary by G. V. Lele | Purchased. |

| Serial No. | Title. | Remarks. |
|------------------|---|------------|
| Art. | | |
| 25 | Introduction to Indian Art by A. K. Coomarswami | Purchased. |
| 26 | The Women of the Ajanta Caves by W. E. G. Soloman | " |
| 27 | Examples of Indian Sculptures at the British Museum | Presented. |
| History. | | |
| 28 | Eminent Orientalists | Purchased. |
| 29 | Marathi Riyashat, Part II, by G. C. Sardesai | " |
| 30 | " " III | " |
| 31 | The Light of Asia by Sir E. Arnold | " |
| 32 | Indian Teachers of the Buddhist Universities by Phanindra Nath Bose | " |
| 33 | Tutankhaman and Discovery of his Tomb by G. E. Smith | " |
| 34 | Three Years in Tibet by S. E. Kawaguchi | " |
| 35 | The Dravidian Element in Indian Culture by G. Slater | " |
| 36 | A Short History of India from the Earliest Times to the Present Day by E.B. Havell. | " |
| 37 | Shree Harsha of Kanauj by K. M. Panikkar | " |
| 38 | Tutankhaman by Sir E. A. Wallis Budge | " |
| 39 | A Peep into the Early History of India by Sir R. G. Bhandarkar | " |
| Journals. | | |
| 40 | Index to Vols. I to L (1872-1921) Indian Antiquary, Part I, by L. M. Anstey. | " |
| 41-51 | Indian Antiquary from June 1923 to April 1924 | " |
| 52-57 | Modern Review from January 1924 to June 1924 | " |
| 58 | Index to Vols. I to L (1872-1921) Indian Antiquary, Part II & III, by L. M. Anstey. | " |
| 59 | Index to Indian Antiquary, Vol. LII, 1923 | " |
| 60 | Burlington Magazine for October 1923 | " |
| 61 | The Quarterly Journal of the Mythic Society, Vol. XIII, No. 4 | " |
| 62-64 | " " " " XIV, Nos. 1 to 3 | " |
| 65-76 | Rupam Nos. 1, 2, 4, and 9 to 17 | " |
| 77 | Proceedings of the Asiatic Society of Bengal, No. II, February 1888 | " |
| 78 | Journal of the Royal Asiatic Society of Great Britain and Ireland, 3rd quarter, July 1923. | " |

| Serial No. | Title. | Remarks. |
|----------------------------|---|------------|
| 79 | Journal of the Royal Asiatic Society of Great Britain and Ireland, 4th quarter, October 1923. | Purchased. |
| 80 | Journal of the Royal Asiatic Society of Great Britain and Ireland, 2nd quarter, April 1924. | " |
| 81 | Journal of the Asiatic Society of Bengal, Vol. LVIII, Part I, No. I, 1889 ... | " |
| 82 | " " " " " II ... | " |
| 83 | " " " " " III ... | " |
| 84 | Luzac's Oriental List of Book Reviews, Vol. XXXIV, October-December, 1923. | " |
| Literature. | | |
| 85 | Brihat Samhita by Varahmihir, Vol. X, Part I ... | " |
| 86 | " " " II ... | " |
| 87 | Mayamata of Mayamuni by Ganpati Sastri ... | " |
| 88 | Kathasaritsagar by Somadeva Bhatta ... | " |
| 89 | Shri Shankaracharya ani tyancha Sampradaya by M. R. Bodas ... | " |
| 90 | Essay on Gunadhya and Brahatkatha ... | " |
| Miscellaneous. | | |
| 91 | The Ancient Monuments Preservation Regulation of Jammu and Kashmir States. | Presented. |
| Architecture. | | |
| 92 | A summary of the Manasara by P. K. Acharya ... | " |
| Numismatics. | | |
| 93 | Supplementary Catalogue of the Coins in the Indian Museum, Calcutta, Vol. V, by B. B. Bidya Binod. | " |
| State Publications. | | |
| 94 | Annual Administration Report of the Department of Economic Development Board of the Gwalior State for 1978. | " |
| 95 | Administration of the Gwalior State during the year 1920-21 ... | " |
| 96 | Catalogue of Books in the Secretariat General Library, Part I ... | " |
| 97 | " " " " " II ... | " |
| 98 | Commercial Directory of the Gwalior State ... | " |
| 99 | Guide to Gwalior and Shivpuri, by B. F. Cavanaugh ... | Purchased. |
| 100 | Darbar Policy (General) ... | " |
| 101 | Policy Home Department ... | " |

| Serial No. | Title. | | | | | | Remarks. |
|------------|---|-----|-----|-----|-----|-----|------------|
| 102 | Correspondence Manual | ... | ... | ... | ... | ... | Purchased. |
| 103 | Accounts Manual | ... | ... | ... | ... | ... | " |
| 104 | Civil Service Rules | ... | ... | ... | ... | ... | " |
| 105 | H. H. Maharaja Scindia's Speeches, Vol. I, by R. D. Vaishya | ... | ... | ... | ... | ... | " |
| 106 | " " " " II, " " " | ... | ... | ... | ... | ... | " |
| 107 | Directory of Chironji Block | ... | ... | ... | ... | ... | Presented. |
| 108 | Engineering Code, Part I | ... | ... | ... | ... | ... | Purchased. |
| 109 | General Statistics of the Gwalior State for Samvat 1980 | ... | ... | ... | ... | ... | Presented. |
| 110-25 | Memorandum Nos. 1, 2, 5, 5, 11 to 15 and 16 to 22 | ... | ... | ... | ... | ... | Purchased. |
| 126-31 | Memorandum Nos. 24-29 | ... | ... | ... | ... | ... | Presented. |
| 132 | " No. 30 | ... | ... | ... | ... | ... | " |
| 133-34 | " Nos. 10 and 23 | ... | ... | ... | ... | ... | Purchased. |

APPENDIX L.

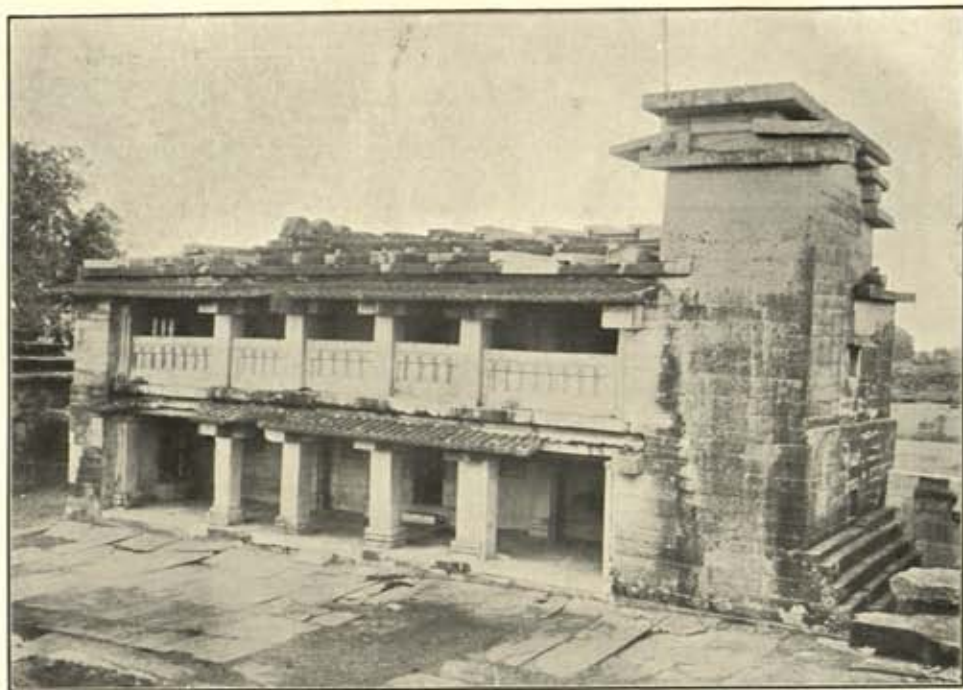
Statement of Income realised in Samvat 1980.

| No. | Head. | | | | Amount. | | | Remarks. |
|-----|--------------------------------------|-----|-----|-----|---------|----|----|----------|
| | | | | | Rs. | a. | p. | |
| 1 | By sale of stone images (duplicates) | ... | ... | .. | 350 | 0 | 0 | |
| 2 | " Guide to Surwaya | ... | ... | ... | 20 | 1 | 5 | |
| 3 | " Gwalior Fort Album | ... | ... | ... | 43 | 8 | 0 | |
| 4 | " Photo prints | ... | ... | ... | 13 | 6 | 2 | |
| 5 | Miscellaneous | ... | ... | ... | 6 | 11 | 0 | |
| | TOTAL | | | | 433 | 10 | 7 | |

APPENDIX M.

Statement of Expenditure incurred in Samvat 1980.

| No. | Head. | | | | Amount current year. | | | Amount last year. | | | Total Amount. | | |
|-----|---|-----|-----|-----|----------------------|----|----|-------------------|----|----|---------------|----|----|
| | | | | | Rs. | a. | p. | Rs. | a. | p. | Rs. | a. | p. |
| 1 | Salaries | ... | ... | ... | 8,370 | 6 | 3 | Nil. | | | 8,370 | 6 | 3 |
| 2 | Travelling allowances | ... | ... | ... | 2,259 | 3 | 0 | " | | | 2,259 | 3 | 0 |
| 3 | Contingencies | ... | ... | ... | 1,484 | 10 | 9 | " | | | 1,484 | 10 | 9 |
| 4 | Books | ... | ... | ... | 313 | 3 | 6 | " | | | 313 | 3 | 6 |
| 5 | Museum | ... | ... | ... | 901 | 12 | 10 | 127 | 8 | 0 | 1,029 | 4 | 10 |
| 6 | Works— | | | | | | | | | | | | |
| | (a) Conservation proper | ... | ... | ... | 7,370 | 0 | 11 | 4,215 | 6 | 6 | 11,585 | 7 | 5 |
| | (b) Sending copies of frescoes to England | | | | 135 | 5 | 3 | Nil. | | | 135 | 5 | 3 |
| | (c) Publication of Gwalior Fort Album | ... | | | 299 | 11 | 8 | " | | | 299 | 11 | 8 |
| | (d) Salaries of staff charged to works | ... | | | 398 | 11 | 0 | " | | | 398 | 11 | 0 |
| 7 | Miscellaneous head | ... | ... | ... | 494 | 1 | 3 | " | | | 494 | 1 | 3 |
| 8 | Expenditure over and above budget grant, | | | | 195 | 0 | 0 | " | | | 195 | 0 | 0 |
| | TOTAL | | | | 22,222 | 2 | 5 | 4,342 | 14 | 6 | 26,565 | 0 | 11 |

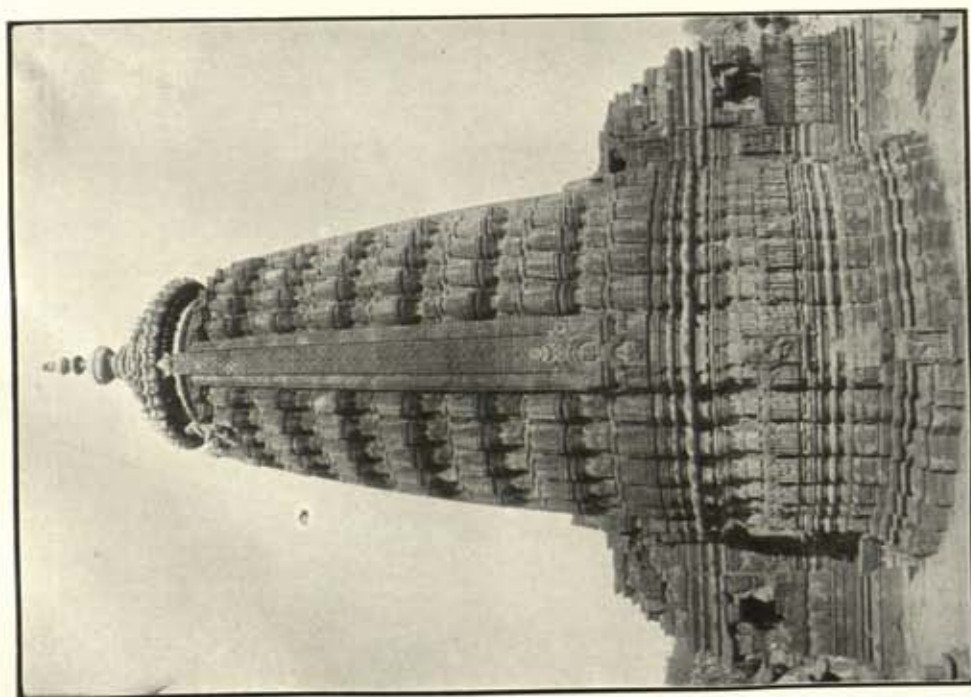


(a) Khokhai Hindu Monastery at Ranod, after repair.

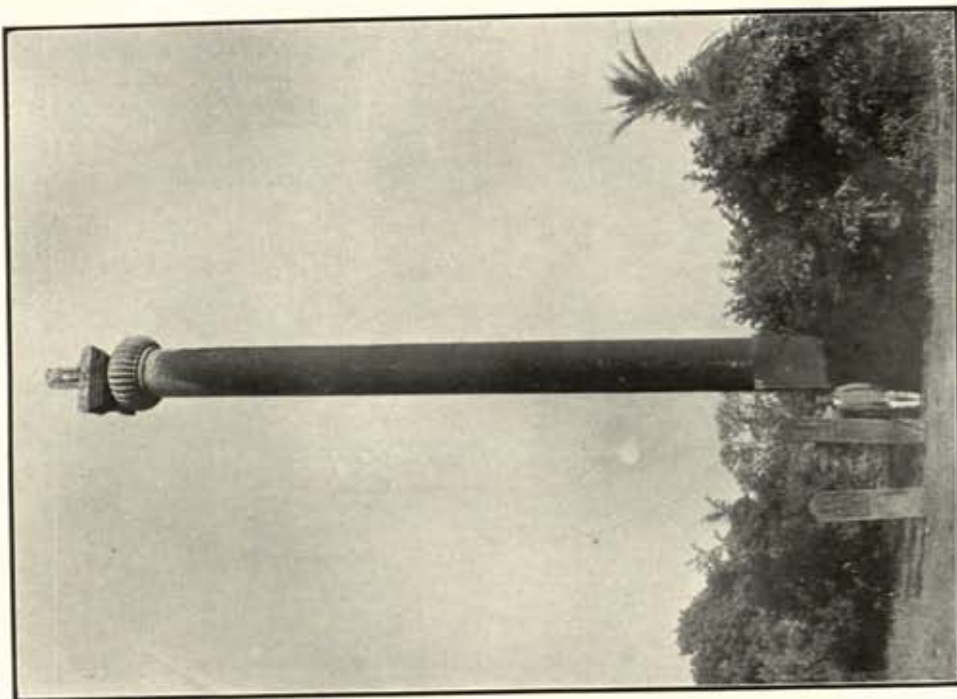


(b) Gadarmal Temple at Badoh.
General view from N. E. after clearance and repair.





(a) Udayeswar Temple, Udaypur : back view.



(b) Inscribed monolithic Pillar, Pathari.



(a) Trimurti, from Padhavli.



(b) Busts of Varahi and another goddess, from Badoh.



(c) Siva, from Badoh.



(d) Indrani, from Kota.

Reports - Annual
Archaeology - Swatlow.



N.C.
1918/20

Archaeological Library, 22657

Call No. R 913.041/I.D.H/G.

Author— India Department of
Arch.

Title— Annual Report of the
Arch. Dept. Government
State. 1923-24.

Date of Return

"A book that is shut is but a block"

CENTRAL ARCHAEOLOGICAL LIBRARY
GOVT. OF INDIA
Department of Archaeology
NEW DELHI.

Please help us to keep the book
clean and moving.