

GOVERNMENT OF INDIA

DEPARTMENT OF ARCHAEOLOGY

**CENTRAL ARCHAEOLOGICAL  
LIBRARY**

---

Acc. No 30526

CALL No. R 910.3095451G1 / M.D. 5 / N.A

D.G.A. 79.



## AGENTS FOR THE SALE OF MADRAS GOVERNMENT PUBLICATIONS.

---

### IN INDIA.

A. C. BARREAU & Co. (Late A. J. COMBRIDGE & Co.), Madras.  
R. CAMBRAY & Co., Calcutta.  
M. M. GOPALAKRISHNA KONE, Pudukmantapam, Madura.  
HIGGINBOTHAMS (Ltd.), Mount Road, Madras.  
V. KALYANARAMA IYER & Co., Esplanade, Madras.  
G. C. LOGANADHAM BROTHERS, Madras.  
S. MURTHY & Co., Madras.  
G. A. NATHAN & Co., Madras.  
The Superintendent, NASSIR KANUN HIND PRESS, Allahabad.  
P. R. RAMA IYAR & Co., Madras.  
D. B. TARAPOREVALA SONS & Co., Bombay.  
THACKER & Co. (Ltd.), Bombay.  
THACKER, SPINK & Co., Calcutta.  
S. VAS & Co., Madras.

---

### IN ENGLAND.

B. H. BLACKWELL, 59 and 51, Broad Street, Oxford.  
CONSTABLE & Co., 10, Orange Street, Leicester Square, London, W.C.  
DEIGHTON, BELL & Co. (Ltd.), Cambridge.  
T. FISHER UNWIN (Ltd.), 1, Adelphi Terrace, London, W.C.  
GRINDLAY & Co., 54, Parliament Street, London, S.W.  
KEGAN PAUL, TRENCH, TRÜBNER & Co. (Ltd.), 68-74, Carter Lane, London, E.C.  
and 25, Museum Street, London, W.C.  
HENRY S. KING & Co., 65, Cornhill, London, E.C.  
P. S. KING & SON, 2 and 4, Great Smith Street, Westminster, London, S.W.  
LUEAC & Co., 46, Great Russell Street, London, W.C.  
B. QUARITCH, 11, Grafton Street, New Bond Street, London, W.  
W. THACKER & Co., 2, Creed Lane, London, E.C.

---

### ON THE CONTINENT.

ERNEST LEROUX, 28, Rue Bonaparte, Paris.  
MARTINUS NIJHOFF, The Hague, Holland.

MADRAS DISTRICT GAZETTEERS.

---

NORTH ARCOT.

VOLUME II.



PRICE, 1 rupee.]

[1 shilling 6 pence.







MADRAS DISTRICT GAZETTEERS.

STATISTICAL APPENDIX

~~A-N.~~  
~~7226~~

FOR

NORTH ARCOT DISTRICT.

30526



~~D-8725~~

R 910.309545/G  
M.D.G./N.A.

MADRAS:

PRINTED BY THE SUPERINTENDENT, GOVERNMENT PRESS.

1915.

**CENTRAL ARCHAEOLOGICAL  
LIBRARY NEW DELHI**

Acc. No. .... 30526 .....

Date. .... 7.3.57 .....

Call No. R 910.3095451 G .....

M.D.G./N.A.

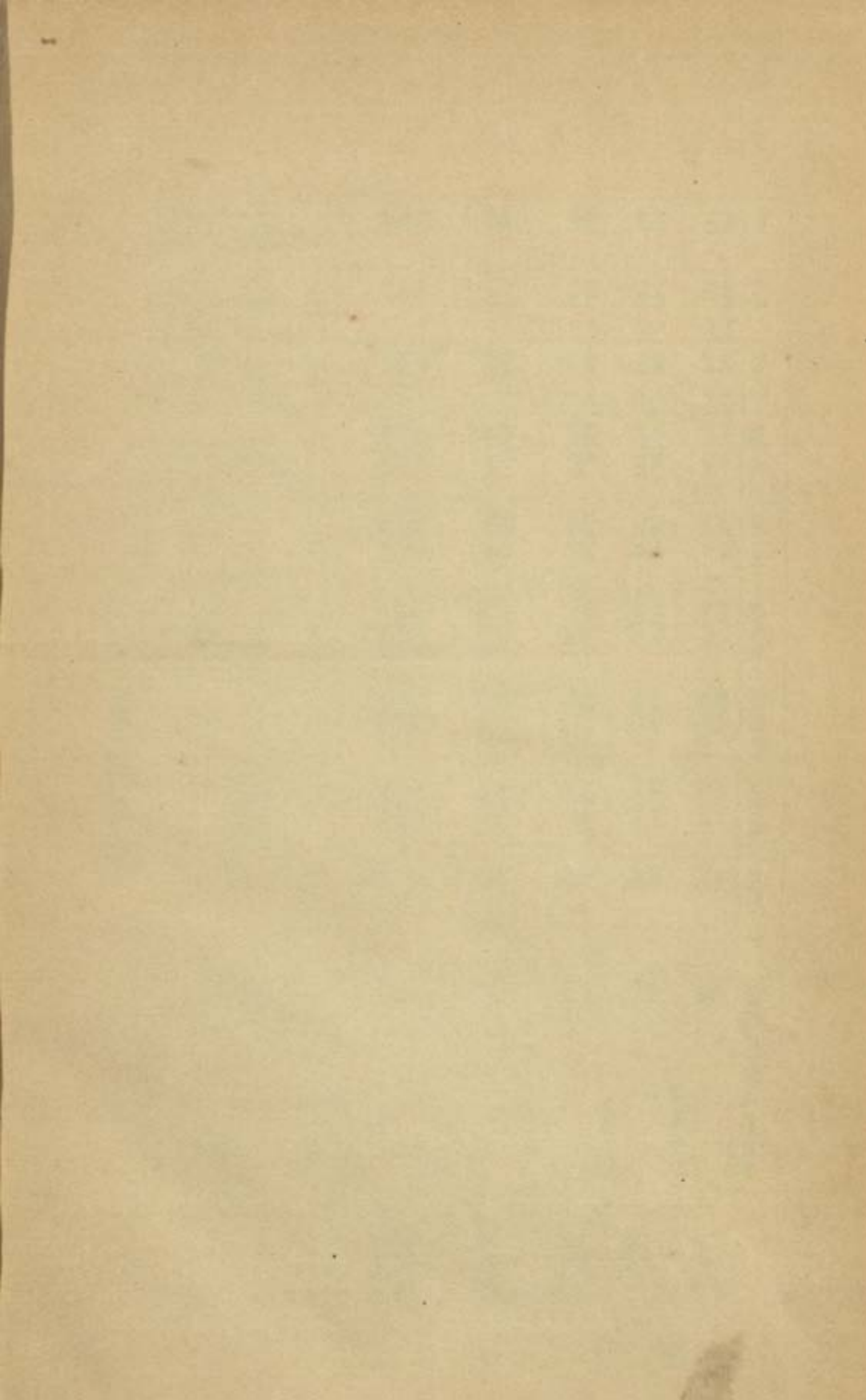
# TABLE OF CONTENTS.

TABLE	PAGE
I. Area, Population, etc., in 1911 ... ..	1
II. Variation in Population since 1891 ... ..	2
III. Roads ... ..	2
IV. List of Travellers' Bungalows ... ..	3
V. Religions in 1911 ... ..	9
VI. Vital Statistics ... ..	10
VII. Causes of Death ... ..	11
VIII. Castes, Tribes and Races in 1911 ... ..	12
IX. Classification of Area and Principal Crops in Fasli 1322 (1912-13) ... ..	14
X. Reserved Forest and Area proposed for reserva- tion on 30th June 1913 ... ..	16
XI. Classification of Area and Money rates according to the Resettlement— Part 1. Area under each money rate ... ..	17
„ 2. Classes and sorts included under each money rate ... ..	22
XII. Rainfall ... ..	26
XIII. Holdings, Cultivation and Demand in Fasli 1322 (1912-13) ... ..	28
XIV. Revenue payable by permanently-settled estates in Fasli 1322 (1912-13) ... ..	29
XV. Demand, Collection and Balance of Current Land Revenue and Cesses ... ..	31
XVI. Remissions ... ..	32
XVII. Land Improvement and Agriculturists' Loans ...	33
XVIII. Prices in seers per rupee ... ..	34
XIX. Income-tax (Part IV. "Other sources" only)...	38
XX. Abkārī and Opium ... ..	40
XXI. Revenue Receipts ... ..	40
XXII. Sea-borne Trade: Total Trade in each port.*	
XXII-A. Sea-borne Trade: Chief Imports and Exports in selected ports.*	
XXIII. Income and Expenditure of Local Boards in 1912-13 ... ..	41
XXIV. Income and Expenditure of Municipalities in 1912-13 ... ..	43
XXV. Education in 1911 ... ..	45
XXVI. Schools and Scholars on 31st March 1913 ...	46
XXVII. Expenditure on Schools in 1912-13 ... ..	47
XXVIII. Hospitals and Dispensaries in 1912 ... ..	48
XXIX. Vaccination ... ..	49
XXX. Civil Justice ... ..	50
XXXI. Criminal Justice ... ..	51
XXXII. Work of Criminal Courts ... ..	51
XXXIII. Police and Jails in 1912 ... ..	52

\* These tables are nil.









I.—Area, Population, etc., in 1911.

Locality.	Area in square miles.	Number of			Population.			Population (both sexes) in 1901.	Percentage of variation (of population).		Density of population per square mile, 1911.
		Towns.	Villages.	Occupied houses.	1911.				1891—1901.	1901—1911.	
					Total.	Males.	Females.				
(1)	(2)	(3)	(4)	(5)	(6)	(7)	(8)	(9)	(10)	(11)	(12)
TIRUPPATTUR DIVISION.											
Tirupattur...	539	2	197	38,030	207,232	100,946	106,316	205,388	+ 9.1	+ 0.6	385
Gudiyattam	446	2	182	32,182	206,835	101,549	105,286	195,665	+ 10.7	+ 5.7	464
Kangundi ...	346	...	272	13,503	68,210	34,059	34,151	64,446	+ 19.2	+ 5.8	197
TIRUVANNAMALAI DIVISION.											
Tiruvannamalai	1,010	1	401	40,370	285,641	143,332	142,279	214,085	+ 18.8	+ 17.0	283
Polar	585	2	177	23,631	169,557	83,747	85,810	152,475	+ 10.8	+ 11.2	290
RANIPET DIVISION.											
Walajpet ...	395	5	181	30,644	216,795	106,446	110,349	191,231	+ 0.7	+ 13.4	549
Arkonam ...	319	1	176	23,260	164,412	82,398	82,114	135,212	- 9.3	+ 21.6	515
CHEYAR DIVISION.											
Cheyar ...	328	1	216	20,898	148,355	73,774	74,581	128,590	+ 0.4	+ 15.4	452
Wandiwash	310	1	205	22,381	162,020	81,349	81,271	132,595	+ 4.5	+ 22.6	478
VELLORE DIVISION.											
Vellore ...	432	3	150	32,584	222,329	108,999	113,330	203,739	+ 4.5	+ 9.1	515
Arni ...	180	...	151	14,490	108,944	53,444	55,500	96,542	+ 5.2	+ 12.8	605
District Total	4,920	18	2,308	291,876	1,960,960	970,073	990,687	1,750,666	+ 6.5	+ 12.0	369



## II.—Variation in Population since 1891.

Towns.	Population.			Percentage of variation of population.	
	1911.	1901.	1891.	1891-1901.	1901-1911.
(1)	(2)	(3)	(4)	(5)	(6)
The whole district.	1,960,960	1,750,566	1,643,316	6.5	12.01
TIRUPPATTUR TALUK.					
Tiruppattur *	10,470	18,689	16,499	13.2	- 43.9
Vaniyambadi * ...	20,406	12,005	15,838	- 24.2	69.9
GUDIYATTAM TALUK.					
Gudiyattam * ...	23,390	21,335	18,747	13.8	9.6
Peranampattu ...	6,718	7,828	6,254	25.1	- 14.1
TIRUVANNAMALAI TALUK.					
Tiruvannamalai * ...	21,244	17,060	12,155	40.4	24.4
POLUR TALUK.					
Aliyabad ...	6,286	5,996	5,096	17.6	4.8
Polur ...	9,329	9,206	8,631	6.6	7.8
WALAJAPET TALUK.					
Arcoot ...	11,475	10,734	10,928	- 1.7	6.9
Ranipet ...	7,807	7,607	6,793	11.9	2.6
Sholinghur ...	7,978	6,442	6,416	.4	19.1
Visharam ...	6,455	5,424	3,995	35.7	19.0
Walajapet * ...	9,962	10,067	10,485	- 3.9	- 1.4
ARKONAM TALUK.					
Arkonam ...	6,896	5,313	4,236	25.4	29.8
CHEYAR TALUK.					
Tiruvattur ...	9,136	7,106	7,140	- .4	28.5
WANDIWASH TALUK.					
Wandiwash... ..	6,973	5,971	5,185	15.1	16.7
VELLORE TALUK.					
Ambur ... ..	18,264	15,903	10,586	50.2	14.8
Pallikondai... ..	8,008	7,679	7,416	3.5	4.2
Vellore * ... ..	49,746	43,537	44,925	- 3.08	14.2

\* Represents a Municipal town.

## II.—Roads.

Year.	Mileage of roads maintained.		
	Total.	Metalled.	Unmetalled.
1911-12 ... ..	1,188	945	243

NOTE.—The territorial limits of the district were altered with effect from 1st April 1911.





## IV.—List of Travellers' Bungalows.

Serial number.	Taluks and stations.	By whom maintained.	Nearest Railway station, if any, and the distance from it.	Nature of accommodation.
(1)	(2)	(3)	(4)	(5)
TIRUPPATTUR DIVISION.				
<i>Tiruppattūr Taluk.</i>				
1	Audiappanur ...	Forest Department.	Tiruppattūr, 12 miles.	One room.
2	Alangūyam ...	Do.	Vāniyambūdi, 11 miles.	Do.
3	Kambagudi ...	Do.	Tiruppattūr, 24 miles.	Two rooms.
4	Kottūr ...	Do.	Jalarpēt, 4 miles.	Do.
5	Tiruppattūr ...	Do.	Tiruppattūr, $\frac{1}{2}$ mile.	Do.
6	Do. ...	P.W.D.	Close to Tiruppattūr Railway station.	Sitting and dining rooms, bed rooms, drawing room, bath and store rooms.
<i>Gudiyyattam Taluk.</i>				
7	Arungaldrug ...	Forest Department.	Ambur, 8 miles.	Thatched with one room, one bath room, a kitchen and stables for three horses.
8	Gudiyyattam † ...	L.F.D.	Gudiyyattam, $3\frac{1}{4}$ miles.	Tiled. One room, two halls, one bath room, two tiled verandahs, one cook room, three store rooms, two stables, furnished with four chairs, two easy chairs, two tables, one cot complete, one coat stand, one bath room, table, two semi-circular tables, one jar, one basin and two commodes with stands. Watchman is kept. Food is supplied.
9	Katpadi * ...	L.F.D.	Katpadi, $\frac{1}{2}$ mile.	Tiled; two halls, two rooms, two bath rooms, two verandahs, one cook room, three store rooms and two stables. A watchman is kept; furnished with five chairs, two easy chairs, two dining tables, four small tables, two bath room tables, two small benches, two cots complete, a cook room table, two lamps, one commode with stand and two bathing tables. No food is supplied.
10	Kilminnel ...	Forest Department.	Tiruvalam, 2 miles.	Two rooms and a hall, kitchen and stables attached.



## IV.—List of Travellers' Bungalows—cont.

Serial number.	Taluk and stations.	By whom maintained.	Nearest Railway station, if any, and the distance from it.	Nature of accommodation.
(1)	(2)	(3)	(4)	(5)
	TIRUPPATTUR DIVISION —cont.			
	Gudiyattam Taluk —cont.			
11	Pernampattu ...	Forest Department.	Melpatti, 7 miles.	Tiled with one room, two bath rooms, a kitchen and stables for three horses.
12	Synagunta ...	Do.	Gudiyattam, 13 miles.	Do.
13	Virinchipuram ...	Do.	Virinchipuram, 2½ miles.	Two rooms and a hall, kitchen and stables attached.
	TIRUVANNAMALAI DIVISION. Tiruvannamalai Taluk.			
14	Agaram Sibbandi ..	P.W.D.	Agaram sibbandi, ¼ mile.	One room and two stalls for horses.
15	Chengam ...	Forest Department.	Tiruvannamalai, 21 miles.	Two rooms.
16	Kilpennathur * ...	L.F.D.	Tiruvannamalai, 10 miles.	Thatched building, one hall, one bath room, one stable, one cook room furnished with one easy chair, one punka and one commode.
	No food will be supplied. No servant is kept.			
17	Konchi (rest-house) near Padur. †	Forest Department.	Tiruvannamalai, 8 miles.	One room.
18	Nelpat ...	Do.	Tiruvannamalai, 31 miles.	Two rooms.
19	Paramanandal † ...	Do.	Tiruvannamalai, 24 miles.	One room.
20	Thandrapet † ...	Do.	Tiruvannamalai, 10 miles.	Do.
21	Thanipadi ...	Do.	Tiruvannamalai, 20 miles.	Two rooms.





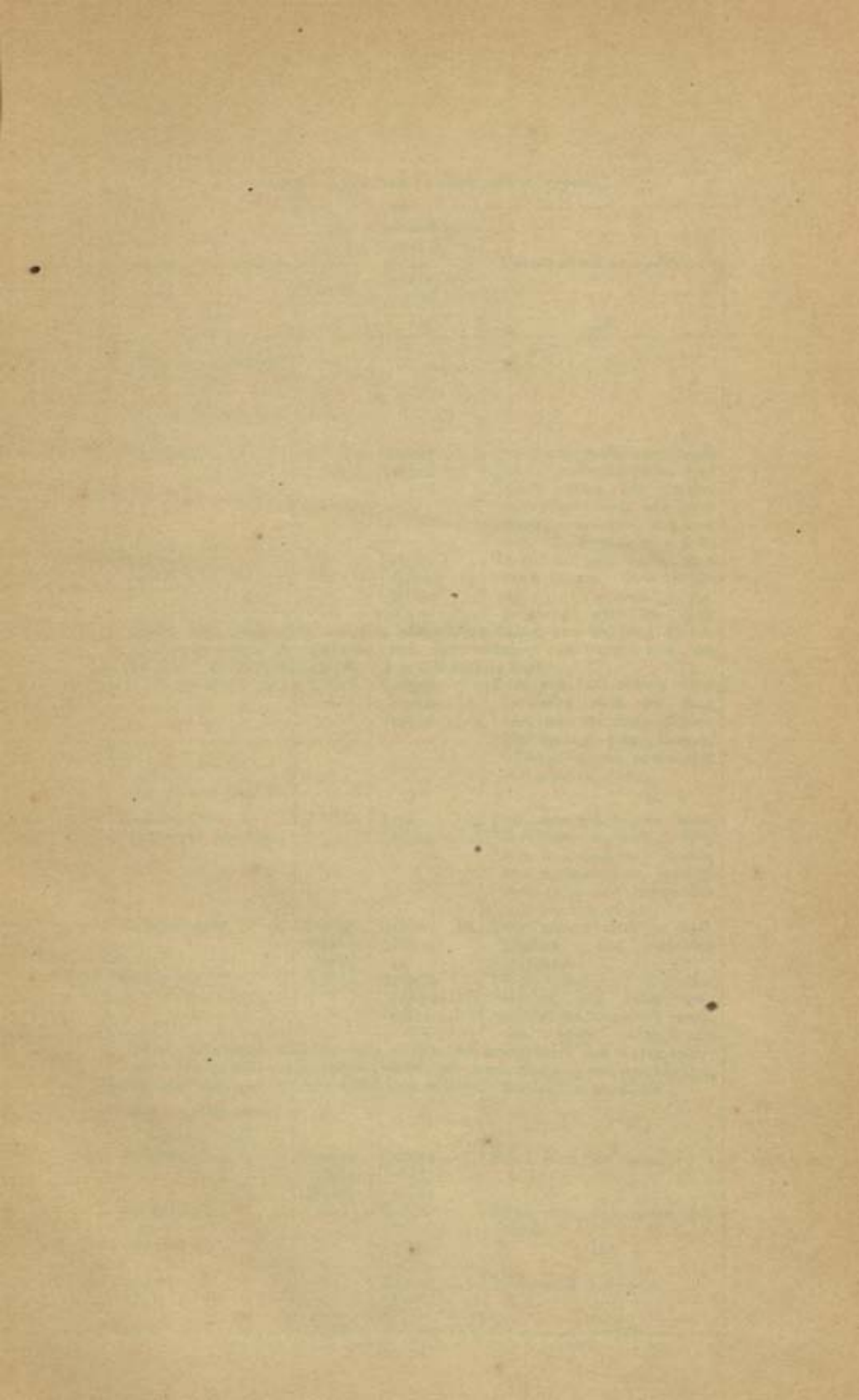
IV.—List of Travellers' Bungalows—*cont.*

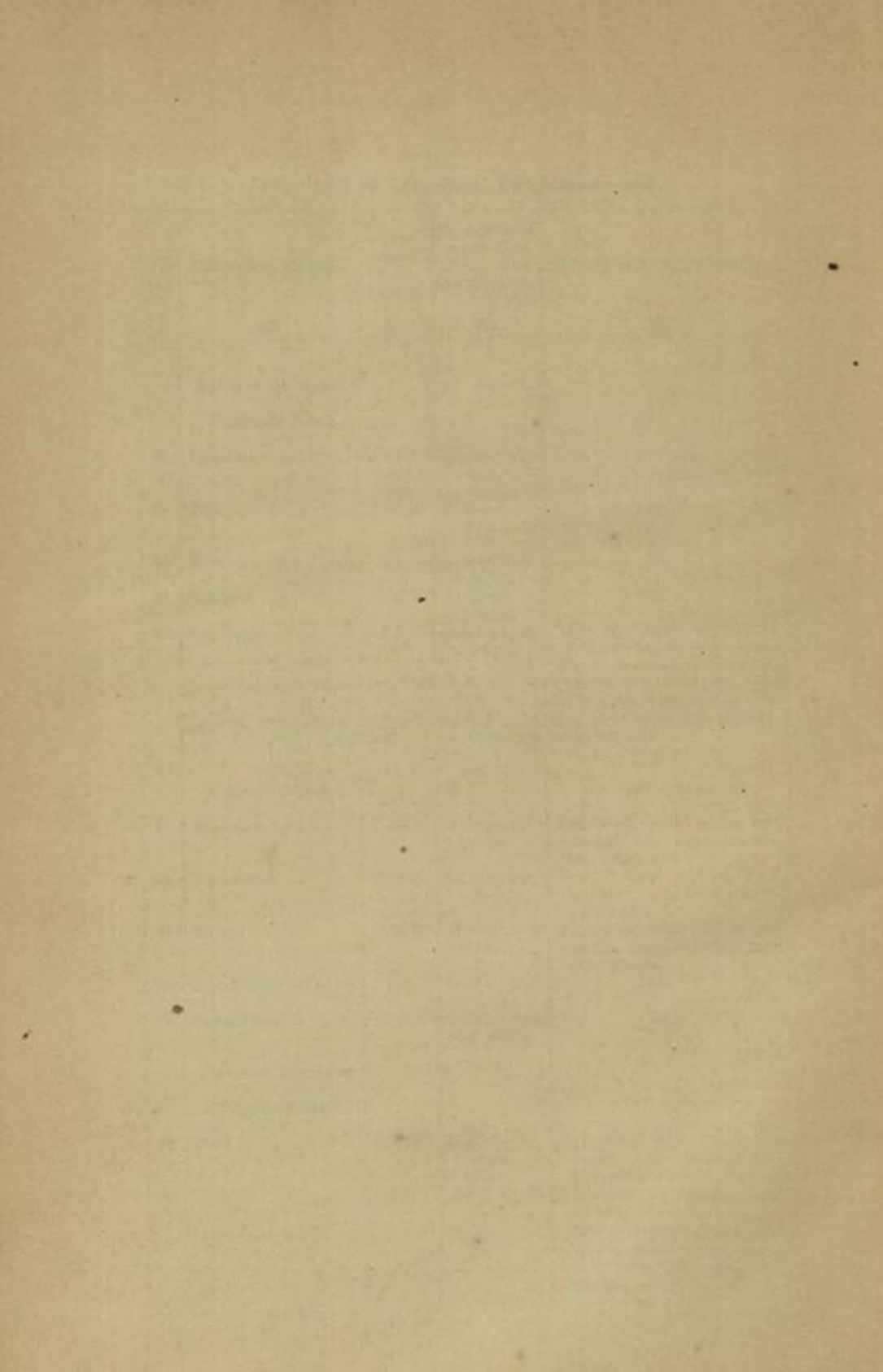
Serial number.	Taluk and stations.	By whom maintained.	Nearest Railway station, if any, and the distance from it.	Nature of accommodation.
(1)	(2)	(3)	(4)	(5)
	TIRUVANNAMALAI DIVISION— <i>cont.</i>			
	<i>Polur Taluk.</i>			
22	Aliyabad anicut ...	P.W.D.	Arni, 7 miles.	Two sets of rooms with furniture such as long arm and ordinary chairs, commodes and punkas, etc.
23	iron spring cots, tatties, bath tubs and Attuvambadi † ...	Forest Department.	Polur, 7 miles.	One room.
24	Athimore † ...	Do.	Polur, 4 miles.	Two rooms.
25	Bagmarpet ...	P.W.D.	Polur, 3 miles.	Two sets of rooms with furniture such as long arm and ordinary chairs, iron spring cots, tatties, bath tubs and commodes and punkas, etc.
26	Elattur ...	Do.	Polur, 9 miles.	Do.
27	Kadaladi ...	Do.	Polur, 15 miles.	This is a store shed not furnished.
28	Karnatighur ...	Forest Department.	Polur, 9 miles.	Two rooms.
29	Komatigiriyur ...	Do.	Vaniyam-badi, 23 miles.	Do.
30	Mandaparai ...	Do.	Polur, 23 miles.	One room.
31	Mulacad ...	Do.	Polur, 15 miles.	Do.
32	Nadanur ...	Do.	Kaniyam-badi, 17 miles.	Do.
33	Patrakad † ...	Do.	Polur, 15 miles.	Two rooms.
34	Polur * ...	L.F.D.	Polur, 1 mile.	Tiled and an out-house, thatched on all sides, one bath room, one verandah, one cook room, thatched roof store room and one stable thatched; furnished with one easy chair, one table, one stool, one bath tub, one hat rack, one cot, one arm chair; one watchman is entertained. No food is supplied.
35	Santavasal † ...	Forest Department.	Arni, 3 miles.	Two rooms.
36	Shenbagatope ...	Do.	Arni, 13 miles.	Do.
37	Thaniar ...	Do.	Polur, 6 miles.	Do.



IV.—List of Travellers' Bungalows—*cont.*

Serial number.	Taluka and stations.	By whom maintained.	Nearest Railway station, if any, and the distance from it.	Nature of accommodation.
(1)	(2)	(3)	(4)	(5)
<p>RANIPET DIVISION.</p> <p><i>Walajapet Taluk.</i></p>				
38	Kuppam ... ..	Forest Department.	Ranipet, 10 miles.	Two rooms and a hall, kitchen and stables attached.
39	Palar anicut ...	P.W.D.	Walajah Road, 7 miles.	Furnished with tables and chairs, can accommodate two officers.
40	Poincy anicut ...	Do.	Tiravalam, 9 miles.	Do.
41	Ranipet ... ..	Do.	Ranipet, 1 furlong.	Do.
42	Sholinghur * ...	L.F.D.	Sholinghur, 8 miles.	Tiled two main rooms, two bath rooms, one store room, one cook room, one watchman room, three stables; furnished with four chairs, two tables, two long arm chairs, one cot, two jugs, two soap pots, two washing basins with stand, two commodes with stand, two bathing tubs and two punkas. No food will be supplied. One watchman is entertained.
<p><i>Arkonam Taluk.</i></p>				
43	Arkonam ... ..	P.W.D.	Arkonam, 1 mile.	Furnished with tables and chairs, can accommodate two officers.
44	Banavaram ... ..	Forest Department.	Sholinghur, 1 furlong.	Two rooms and a hall, kitchen and stables attached.
45	Minnel ... ..	P.W.D.	Minnel, 3 miles.	Furnished with tables and chairs, can accommodate two officers.
46	Kaveripauk (Tank).	Do.	Sholinghur, 6 miles.	Do.
47	Panapakam ... ..	Do.	Sholinghur, 18 miles.	Do.
<p>CHETTYAR DIVISION.</p> <p><i>Chettyar Taluk.</i></p>				
48	Dusi ... ..	P.W.D.	Conjeevaram, 6 miles.	Furnished with tables and chairs, can accommodate two officers.
49	Kovilur ... ..	Do.	Arni, 25 miles.	Two sets of rooms with furniture such as long arm and ordinary chairs, two spring cots, tatties, bath tubs and commodes and punkas, etc.





## IV.—List of Travellers' Bungalows—cont.

Serial number.	Taluks and stations.	By whom maintained.	Nearest Railway station, if any, and the distance from it.	Nature of accommodation.
(1)	(2)	(3)	(4)	(5)
	CHEYYAR DIVISION—cont.			
	<i>Cheyyar Taluk—cont.</i>			
50	Moranam * ...	L.F.D.	Ranipet, 19 miles.	Tiled, one hall, one bath room, one cook room, one store room, one stable, furnished with one arm chair, one table, and one cot. No food is supplied.
51	Tiruvattur * ...	Do.	Conjeevaram, 19 miles.	Terraced; two halls, two bath rooms, two verandahs, one cook room, furnished with one easy chair, two arm chairs, one cot, one dining table, one washing stand, two commodes, one bathing tub, one lantern, one bucket and one punka. No food is supplied. A watchman is kept.
52	Veerambakkam ...	P.W.D.	Conjeevaram, 18 miles.	Two sets of rooms with furniture such as long arm and ordinary chairs, two spring cots, tatties, bath tubs and commodes and punkas, etc.
	<i>Wandiwash Taluk.</i>			
53	Avaniapuram (Cheyyar anicut).	P.W.D.	Arni, 16 miles.	Two sets of rooms with furniture such as long arm and ordinary chairs, two spring cots, tatties, bath tubs and commodes and punkas, etc.
54	Nedungunam ...	Forest Department.	Arni, 18 miles.	Two rooms and a hall, kitchen and stables attached.
55	Wandiwash * ...	L.F.D.	Acharapakam, 19 miles.	Tiled, being half of Police station, one room, two verandahs, one cook room, one store room, one
	stable, furnished with two easy chairs, two arm chairs, one dining table, one washing table, one dressing stand, two commodes, one cot, one bathing tub and two lanterns, one watchman is kept. No food is supplied.			
	VELLORE DIVISION.			
	<i>Vellore Taluk.</i>			
56	Amerdi ...	Forest Department.	Kaniyambadi, 7 miles.	Tiled, with two rooms.
57	Arsambat ...	Do.	Valathur, 17 miles.	Tiled, with one room and stable.
58	Asanambat ...	Do.	Ambur, 25 miles.	Do.
59	Ambur ...	Do.	Ambur, 1 furlong.	Tiled, with one room.



IV.—List of Travellers' Bungalows—*cont.*

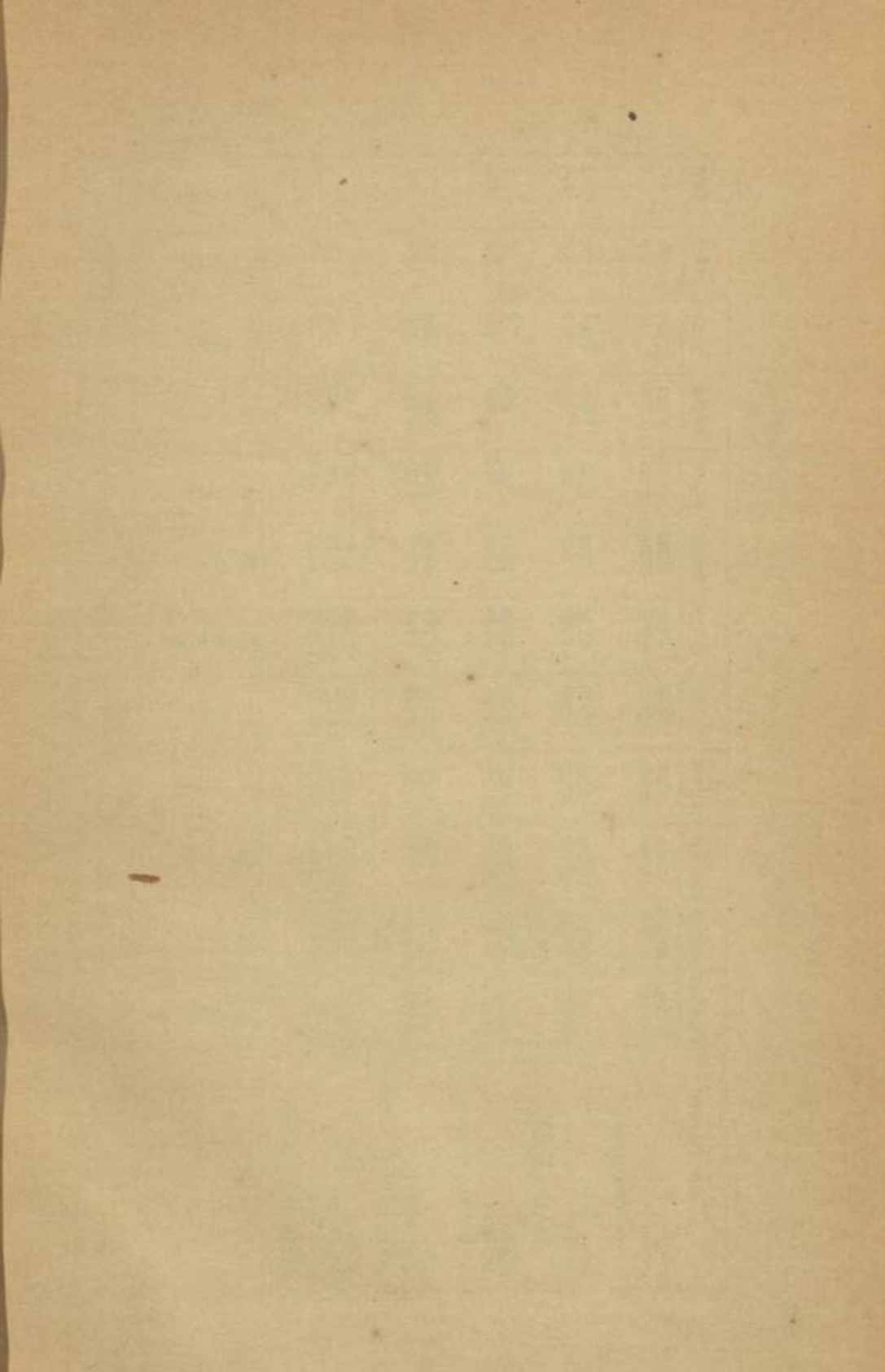
Serial number.	Taluks and stations.	By whom maintained.	Nearest Railway station, if any, and the distance from it.	Nature of accommodation.
(1)	(2)	(3)	(4)	(5)
	VELLORE DIVISION— <i>cont.</i>			
	<i>Vellore Taluk—cont.</i>			
60	Kaniyambadi * ...	L.F.D.	Kaniyambadi, 1 mile.	Thatched building with two rooms, a bathing room and verandahs in front and rear. No furniture except
	two punkas. There is a separate kitchen which is a tiled one and stable with a thatched roof. Besides these, there are five more round sheds. There is a watchman for the bungalow on Rs. 4 per mensem.			
61	Kylasagiri ... ..	Forest Dept.	Vellore, 7 miles.	Tiled, with three rooms.
62	Naickeneri ... ..	Do.	Ambur, 5 miles.	Thatched, with one room.
63	Odugathur ... ..	Do.	Valathur, 10 miles.	Tiled, with one room and stable.
64	Pallikonda * ..	L.F.D.	Gudiyattam, 3½ miles.	Main building tiled and the out-houses thatched, two main rooms, one bath room,
	one verandah, one cook room, one store room, one table, furnished with one easy chair, one dining table, one cot with cotton mattress, two chairs, one galvanized iron bath tub, one tripod stand with enamel basin and punka. A watchman is kept. No food is supplied.			
65	Panankatteri ... ..	Forest Department.	Ambur, 8 miles.	Thatched roof with one room.
66	Pinnathorai ... ..	Do.	Valathur, 7 miles.	Tiled, with one room.
	Arni Division.			
67	Arni ... ..	P.W.D.	Arni, 6½ miles.	Two sets of rooms with furniture such as long arm and ordinary chairs. Two spring cots, tatties, bath tubs, commodes and punkas, etc.

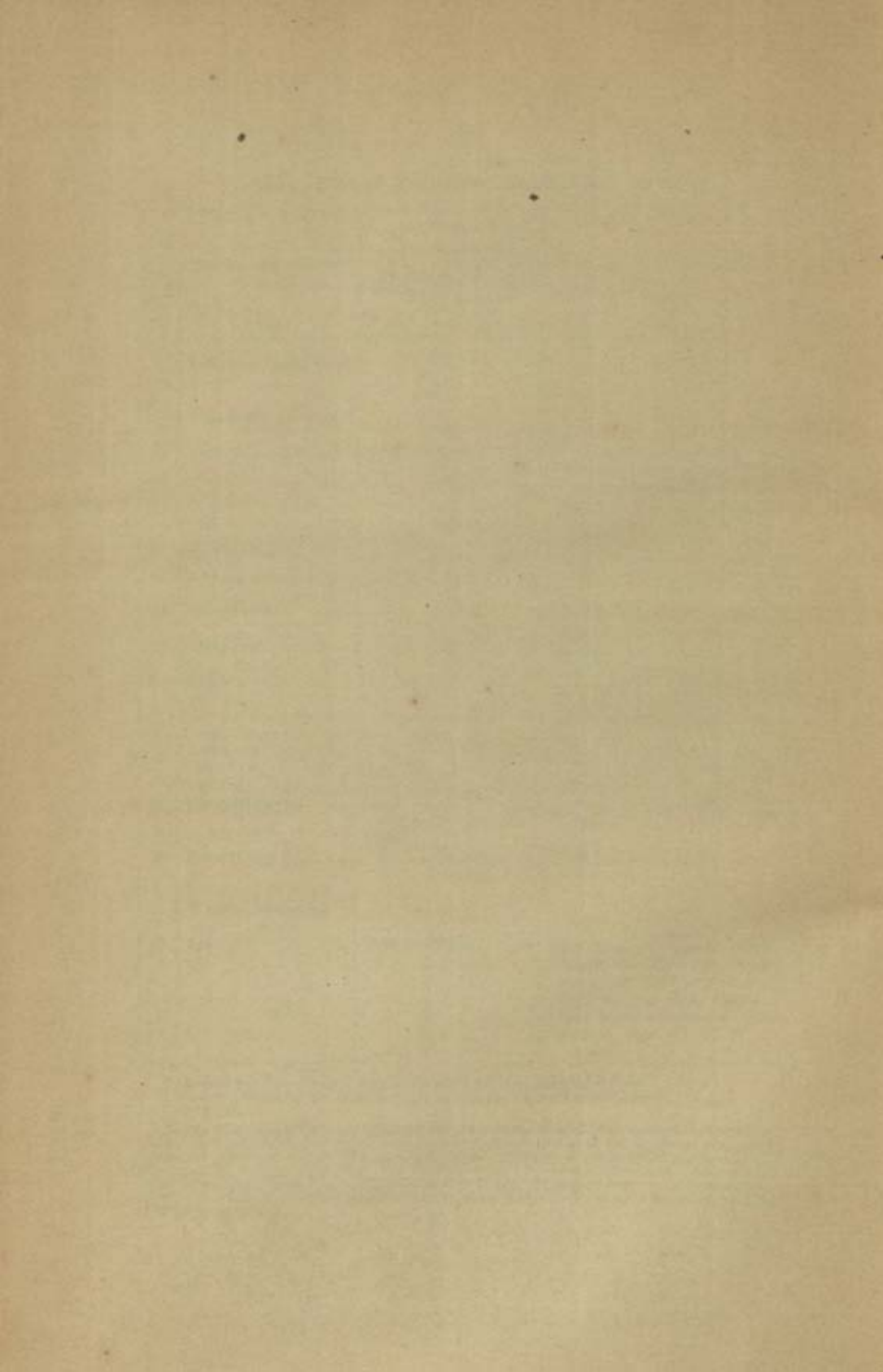
\* Charges per diem : 6 As. for an adult and 8 As. for a married couple.

† Charges per diem : As. 12 for an adult and Rupee 1 for a married couple.

‡ Rent free.

NOTE.—Gazetted officers, non-gazetted officers with the special permission of the Collector, and members of the general public with the previous permission of the Collector occupying bungalows in charge of Public Works department or Forest department (other than those which can be occupied rent free), are charged a day's fee of As. 8 for a single person, and As. 12 for a married couple for occupation of over 12 and less than 24 hours, half-day's charge for an occupation of over three and less than 12 hours, and a charge of As. 4 for an occupation of three hours or less.





V.—Religions in 1911.

6

Taluka.	Hindus.			Musalmans.			Christians.			Others.		
	Total.	Males.	Females.	Total.	Males.	Females.	Total.	Males.	Females.	Total.	Males.	Females.
(1)	(2)	(3)	(4)	(5)	(6)	(7)	(8)	(9)	(10)	(11)	(12)	(13)
TIRUPATTUR DIVISION.												
Tirupattur ...	182,090	89,246	92,844	23,170	10,713	12,457	1,971	975	996	31	12	19
Gadivattam ...	186,323	91,884	94,439	18,997	8,922	10,075	1,514	742	772	1	1	...
Kangundi ...	65,727	32,765	32,962	2,437	1,269	1,168	46	25	21	...	...	...
TIRUVANAMALAI DIVISION.												
Tiruvannamalai ...	296,843	133,758	163,085	9,608	5,034	4,574	8,304	4,161	4,233	796	409	387
Polar ...	154,970	76,601	78,369	5,459	2,735	2,724	8,369	4,049	4,320	759	362	397
RANIPET DIVISION.												
Walajpet ...	199,105	98,324	100,842	14,951	6,881	8,070	2,388	1,104	1,284	290	137	153
Arkonam ...	159,076	79,570	79,506	3,637	1,954	1,683	1,691	867	824	8	7	1
CHEYYAR DIVISION.												
Cheygar ...	144,333	71,765	72,568	2,082	1,060	1,022	911	446	465	1,029	503	526
Wandiwaah ...	151,327	75,679	75,648	3,957	1,956	2,001	3,052	1,569	1,483	4,284	2,145	2,139
VELLORE DIVISION.												
Vellore ...	190,163	93,669	96,494	29,823	14,182	15,641	2,326	1,139	1,187	17	9	8
Arni ...	101,337	49,710	51,627	3,788	1,928	1,860	2,160	1,079	1,081	1,659	827	832
District Total ...	1,801,355	892,971	908,384	117,906	56,534	61,375	32,822	16,156	16,666	8,874	4,412	4,462

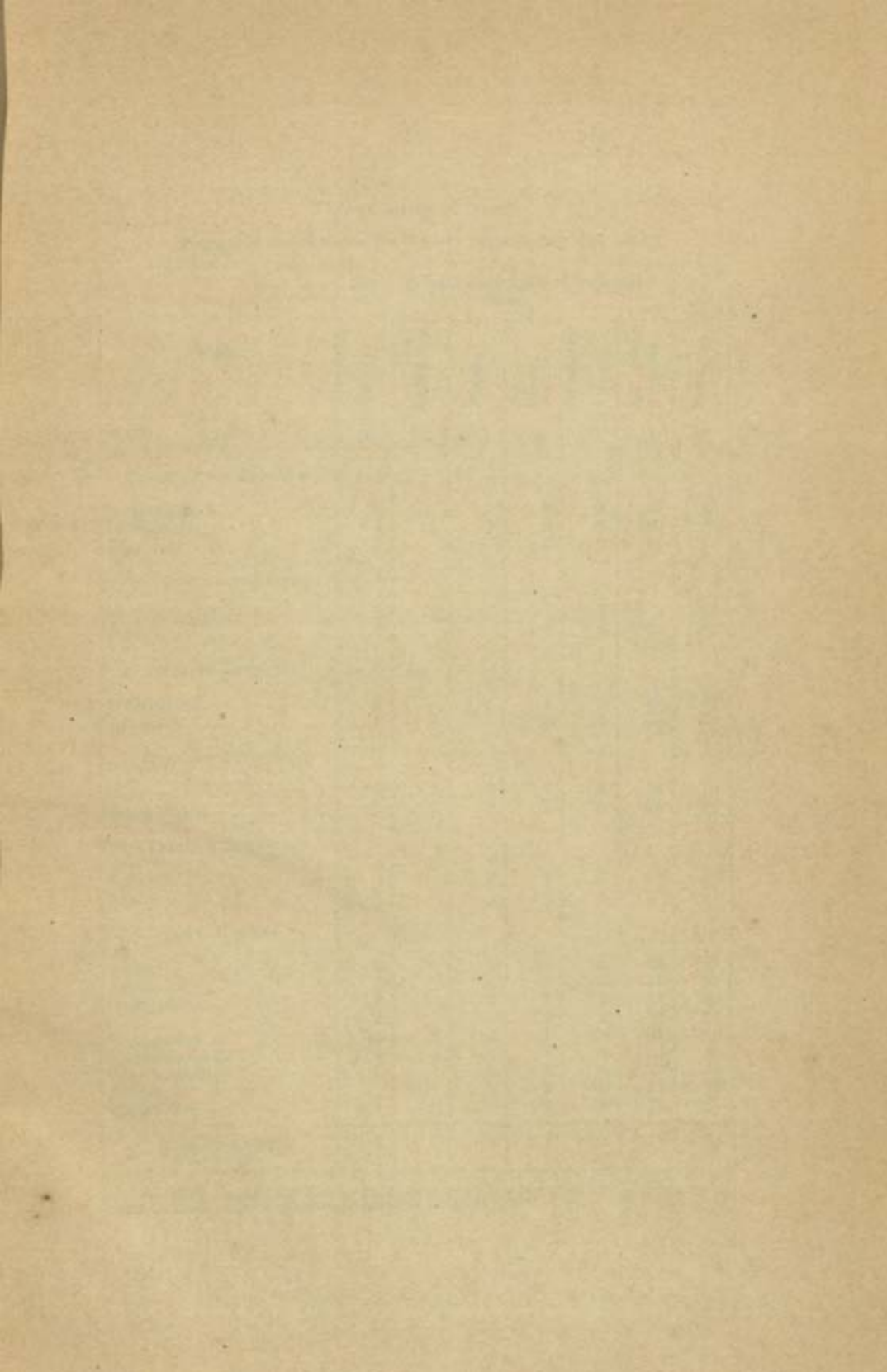


## VI.—Vital Statistics.

Taluka.	Ratio per 1,000 of population of			
	Births.		Deaths.	
	1911.	1912.	1911.	1912.
(1)	(2)	(3)	(4)	(5)
<b>TIRUPPATTUR DIVISION.</b>				
Tiruppattur ... ..	23	28	15	20
Gudiyattam... ..	28	28	14	25
Kangundi ... ..	24	25	16	18
<b>TIRUVANNAMALAI DIVISION.</b>				
Tiruvannamalai ... ..	26	29	17	19
Polur ... ..	33	34	19	23
<b>RANIPET DIVISION.</b>				
Walajahpet ... ..	21	27	13	16
Arkonam ... ..	25	33	19	21
<b>CHEYGAR DIVISION.</b>				
Cheygar ... ..	26	38	15	23
Wandiwash ... ..	30	6	18	22
<b>VELLORE DIVISION.</b>				
Vellore ... ..	22	25	13	21
Arni ... ..	31	36	17	23
<b>TOWN CIRCLES.</b>				
Ambur ... ..	43	38	23	43
Arcot ... ..	41	25	27	27
Gudiyattam... ..	32	25	24	55
Polur ... ..	27	13	22	19
Tiruppattur ... ..	50	59	43	73
Tiruvannamalai ... ..	39	35	42	34
Vaniyambadi ... ..	34	29	24	38
Vellore ... ..	36	41	26	35
Walajahpet ... ..	42	37	30	32
Total for the District ...	27	32	17	23

NOTE.—Particulars are given only for the two years 1911 and 1912 as the territorial limits of the district were revised on 1st April 1911.

This table includes statistics relating to Europeans and Eurasians.





## VII.—Causes of Death.

(Average of the statistics for the two years ending with 1912.)

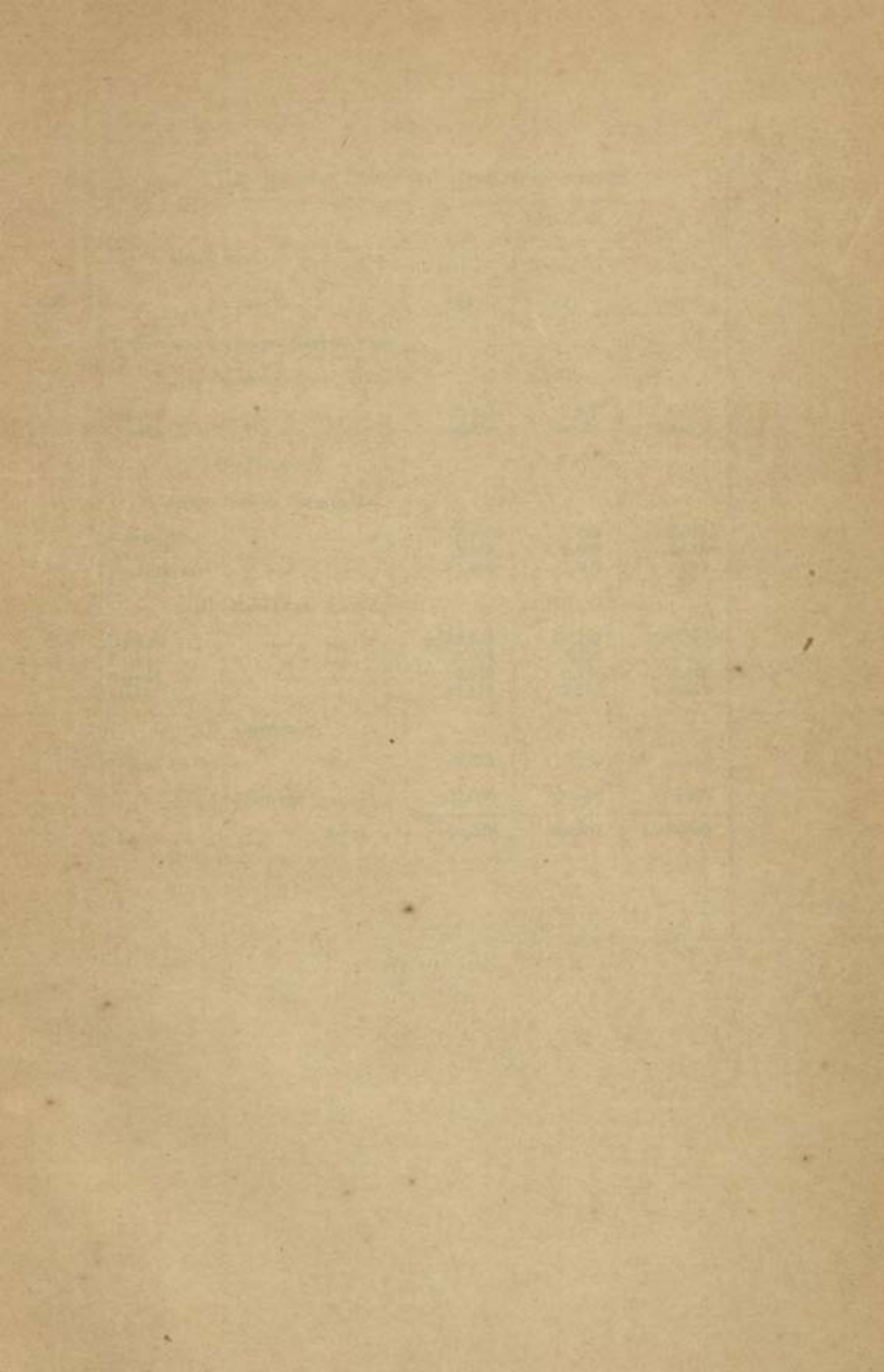
Taluka.	Ratio of deaths per 1,000 of population from						Total.
	Cholera.	Small-pox.	Plague.	Fever.	Dysentery and diarrhoea.	All other causes.	
(1)	(2)	(3)	(4)	(5)	(6)	(7)	(8)
<b>TIRUPPATTUR DIVISION.</b>							
Tiruppattur ... ..	2	...	1	3	2	10	18
Gudiyattam ... ..	4	1	1	2	2	10	20
Kangundi ... ..	2	...	...	2	2	11	17
<b>TIRUVANNAMALAI DIVISION.</b>							
Tiruvannamalai ... ..	2	1	...	4	2	9	18
Polur ... ..	2	...	...	3	3	13	21
<b>RANIPET DIVISION.</b>							
Walajahpet ... ..	2	...	...	1	2	10	15
Arkonam ... ..	2	1	...	1	1	15	20
<b>CHEYGAR DIVISION.</b>							
Cheygar ... ..	2	1	1	1	1	13	19
Wandiwash ... ..	1	1	1	1	2	15	21
<b>VELLORE DIVISION.</b>							
Vellore ... ..	4	...	1	2	1	9	17
Arni ... ..	1	1	...	5	4	10	21
<b>TOWN CIRCLES.</b>							
Ambar ... ..	9	2	1	...	2	18	32
Arcot ... ..	6	...	...	2	2	17	27
Gudiyattam ... ..	2	...	16	5	5	12	40
Polur ... ..	2	...	...	3	3	13	21
Tiruppattur ... ..	10	1	10	6	8	23	58
Tiruvannamalai ... ..	4	2	...	4	4	24	38
Vaniyambadi ... ..	9	1	2	1	2	16	31
Vellore ... ..	...	...	1	2	6	21	30
Walajahpet ... ..	1	2	...	4	3	21	31
District Average ...	2	1	1	2	2	12	20

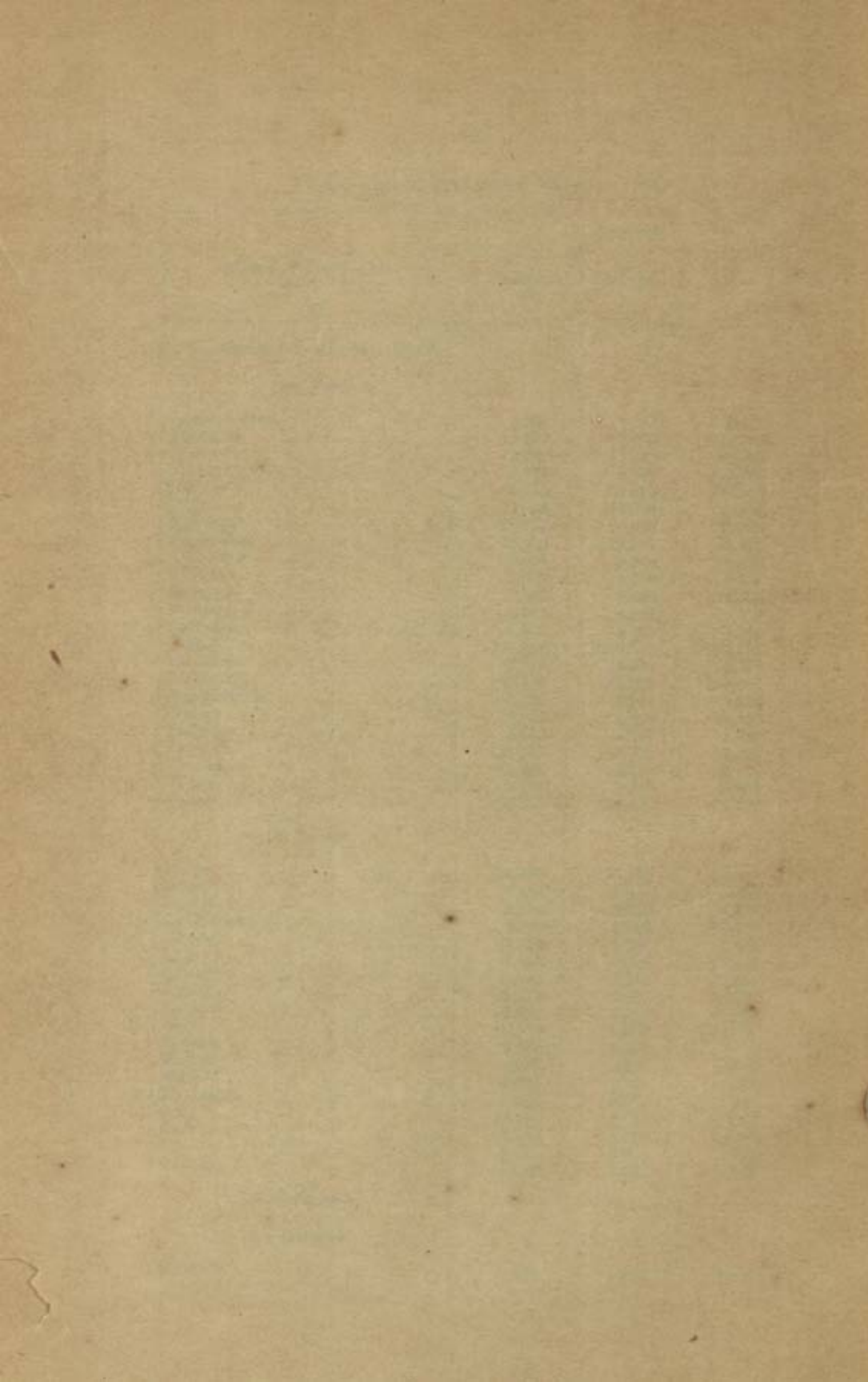
NOTE.—The average has been worked out only for the two years 1911 and 1912, as the territorial limits of the district were revised on 1st April 1911.



## VIII.—Castes, Tribes and Races in 1911.

Caste, Tribe or Race. (1)	Strength.		
	Males. (2)	Females. (3)	Total. (4)
I.—HINDU AND ANIMIST CASTES.			
(a) Tamil.			
Agamudaiyan ... ..	4,518	4,757	9,275
Ambattan ... ..	11,223	11,380	22,603
Brahman ... ..	13,032	13,339	26,371
Chetti ... ..	3,025	2,755	5,781
Idaiyan ... ..	51,116	51,209	102,325
Irula ... ..	11,525	12,028	23,553
Kaikolan ... ..	26,031	26,058	52,089
Kammalan ... ..	17,302	18,311	35,613
Kanakkann ... ..	9,009	9,088	18,077
Kuravan ... ..	4,340	4,390	8,730
Kusavan ... ..	7,455	7,350	14,805
Muttiriyar ... ..	3,084	3,093	6,177
Nattaman ... ..	2,557	2,301	4,758
Palli ... ..	238,303	243,878	482,181
Pandaram ... ..	2,778	2,374	5,152
Paraiyan ... ..	149,846	153,235	303,081
Sembadavan ... ..	3,522	3,774	7,296
Shanan ... ..	8,041	8,075	16,116
Valluvan ... ..	4,073	4,647	8,720
Vaniyan ... ..	14,502	14,189	28,691
Vannan ... ..	11,405	11,211	22,616
Vedan ... ..	2,712	2,583	5,295
Vellala ... ..	108,099	109,007	217,106
(b) Telugu.			
Baliya ... ..	34,593	35,698	70,291
Boya ... ..	2,534	2,365	4,899
Brahman ... ..	2,534	2,656	5,190
Chakkiliyan ... ..	9,322	9,599	18,921
Devanga ... ..	3,601	3,543	7,144
Idiga ... ..	6,117	6,629	12,646
Janappan ... ..	1,192	1,391	2,583
Kamma ... ..	22,311	22,251	44,562
Kamsala ... ..	1,832	1,917	3,749
Kapu ... ..	15,572	16,063	31,635
Komati ... ..	5,366	5,438	10,804
Madiga ... ..	2,997	2,707	5,704
Mala ... ..	5,324	5,286	10,610
Mutracha ... ..	9,246	9,462	18,708
Odde ... ..	18,405	18,650	37,055
Razu ... ..	1,573	1,816	3,389
Sale ... ..	2,320	2,404	4,724
Velama ... ..	1,050	1,065	2,115
(c) Malayalam.		Nil.	
(d) Canarese.			
Brahman ... ..	991	1,121	2,112





VIII.—Castes, Tribes and Races in 1911—*cont.*

Caste, Tribe or Race. (1)	Strength.		
	Males. (2)	Females. (3)	Total. (4)
<b>I. HINDU AND ANIMIST CASTES—<i>cont.</i></b>			
(d) <i>Canarese</i> — <i>cont.</i>			
Jangam ... ..	2,059	2,276	4,335
Kuruba ... ..	9,979	10,053	20,032
(e) <i>Oriya</i>			
		Nil	
(f) <i>Other Madras Languages.</i>			
Kshatriya ... ..	1,400	1,179	2,579
Mahrati ... ..	2,455	2,559	5,014
Patnulkaran ... ..	1,459	1,502	2,961
<b>II. MUSALMAN.</b>			
Labbai ... ..	23,525	26,948	50,473
Pathan ... ..	3,601	3,426	7,027
Saiyad ... ..	6,562	6,766	13,328
Sheik ... ..	21,172	22,500	43,672
<b>III. CHRISTIAN.</b>			
Indian Christian ... ..	15,628	16,166	31,794
<b>IV. OTHERS</b>			
	27,855	28,638	56,493
Total ...	970,073	990,887	1,960,960



IX.—Classification of area and principal crops in Faali 1322 (1912-13).

Items.	Tirupattur Division.				Tiruvannamalai Division.		Ranipet Division.		Chayyar Division.		Vellore Division.		District Total.
(1)	Tirupattur Taluk.	Gudiyatham Taluk.	Kanumudi Division.	(4)	Tiruvannamalai Taluk.	Polar Taluk.	Walajahpet Taluk.	Arko-nam Taluk.	Chayyar Taluk.	Wandi-wash Taluk.	Vellore Taluk.	Arni Division.	(13)
	(2)	(3)	(4)	(5)	(6)	(7)	(8)	(9)	(10)	(11)	(12)		
	ACS.	ACS.	ACS.	ACS.	ACS.	ACS.	ACS.	ACS.	ACS.	ACS.	ACS.	ACS.	ACS.
Government (Byelward) land ...	223,788	273,981	...	694,732	306,847	220,535	183,077	193,174	205,714	297,982	...	...	2,537,730
Minor man ...	3,463	12,480	...	8,302	7,175	12,883	8,461	8,221	9,089	6,318	...	...	77,141
Whole man ...	4,350	350	32,022	4,795	175	...	7,714	8,220	2,483	2,346	...	...	75,640
Zamindari ...	105,560	...	187,761	8,378	...	...	3,584	...	...	...	115,398	...	413,511
Total area by survey ...	345,171	285,581	221,083	646,222	374,201	222,884	201,288	209,025	217,286	270,576	115,398	...	3,148,915
Forests	105,297	101,506	2,010	202,016	103,776	21,175	2,330	6,797	10,821	129,371	...	...	777,688
Not available for cultivation ...	39,375	24,010	122,872	150,089	40,050	67,552	45,277	61,882	50,791	37,811	54,408	...	734,008
Culturable waste other than fallow ...	9,082	38,214	4,716	41,610	3,634	24,098	30,605	19,167	29,456	11,569	15,116	...	219,191
Current fallows ...	31,951	16,437	8,815	57,446	25,001	27,050	37,941	16,357	25,884	14,908	...	...	252,160
Net area cropped ...	138,156	105,225	52,076	185,190	102,080	112,000	96,846	105,422	109,304	82,317	45,784	...	1,105,208
Area shown in village accounts ...	345,171	285,581	221,083	646,222	374,201	222,884	201,288	209,025	217,286	270,576	115,398	...	3,148,915
Irrigated by Government canals	2,607	7,300	50	1,879	...	8,686	1,315	3,658	215	6,250	...	...	31,358
Do. by private canals ...	...	8,821	6,730	36,784	31,479	...	40,401	40,257	37,062	8,906	1,177	...	2,541
Do. by tanks ...	13,400	17,840	420	20,889	6,372	9,374	7,359	2,081	6,375	11,182	15,437	...	281,409
Do. by wells ...	...	7,229	7,500	2,118	1,716	761	1,038	710	46	619	14,658	...	83,101
Do. by other sources ...	1,276	...	...	...	...	...	...	...	...	...	...	...	37,691
Total area irrigated ...	17,273	41,308	15,292	62,422	39,207	54,033	50,133	47,000	43,638	20,950	32,472	...	430,000





[illegible]



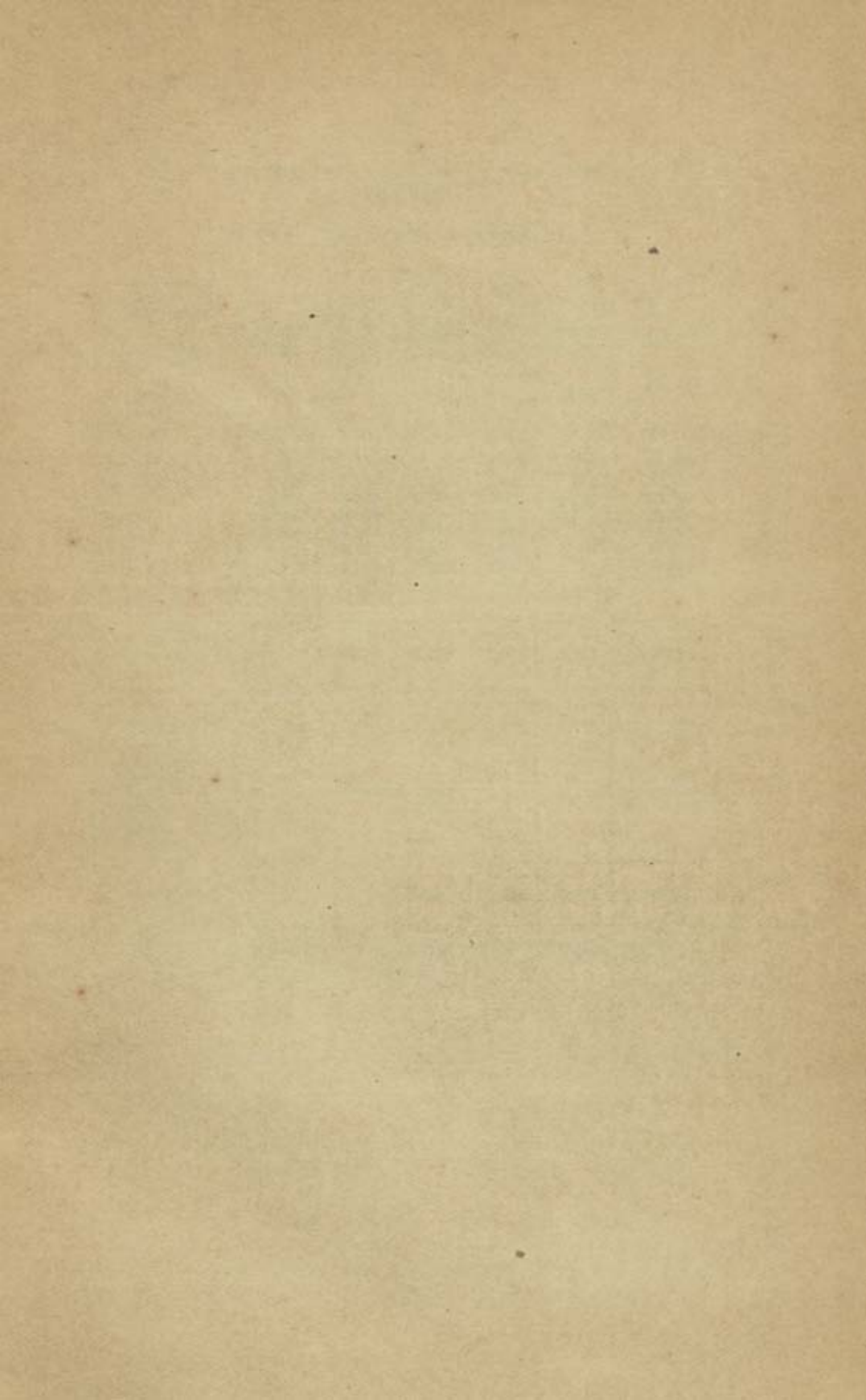
**X.—Reserved forest and area proposed for reservation  
(in square miles) on 30th June 1913.**

Taluka.	Reserved forest.	Area proposed for reservation.	Total of columns 2 and 3.	Area of taluk.	Percentage of column 4 to cultivated area.
(1)	(2)	(3)	(4)	(5)	(6)
<b>TIRUPPATTUR DIVISION</b>					
Tiruppattur ... ..	166.09	...	166.09	539.32	67.21
Gudiyattam ... ..	158.428	.002	158.43	446.22	96.26
Kangundi ... ..	4.08	...	4.08	346.39	4.95
<b>TIRUVANNAMALAI DIVISION.</b>					
Tiruvannamalai ...	315.65	...	315.65	1,009.72	103.57
Polur ... ..	302.77	...	302.77	584.69	189.82
<b>RANIPET DIVISION.</b>					
Walajahpet ... ..	33.09	...	33.09	395.13	18.89
Arkonam .. ...	3.95	...	3.95	319.20	2.61
<b>CHEYYAR DIVISION.</b>					
Cheyyar ... ..	10.60	.02	10.62	327.54	6.45
Wandiwash ... ..	16.91	...	16.91	339.51	9.90
<b>VELLORE DIVISION.</b>					
Vellore ... ..	203.55	...	203.55	432.15	158.26
Arni ... ..	...	...	...	180.31	...
<b>Total ...</b>	<b>1,215.118</b>	<b>.022</b>	<b>1,215.14</b>	<b>4,920.18</b>	<b>69.46</b>

NOTE.—The area entered in the Forest Administration Report for the year differs from that given above, in that it includes an extent of 29,965.69 acres of forest in the villages of Chittoor and Palmaner taluks transferred to Gudiyattam Forest Range without any change in the revenue jurisdiction over that area and excludes 2,636 acres of forest in Kangundi and Timmajai Ammal estate notified under sections 26 and 32 (b) of the Madras Forest Act.

Net revenue realised under forests during				Total
			RS.	RS.
1911-12—Vellore, North Division	...	...	79,050	1,92,312
Vellore, South Division	..	...	1,13,262	
1912-13—Vellore, North Division	...	...	89,402	2,96,941
Vellore, South Division	...	...	2,07,539	

NOTE.—The territorial limits of the district were revised on 1st April 1911.





XI.—Classification of area and money rates according to resettlement.

(Part I. Area under each money rate.)

*Dry.*

Particulars	Vellore Taluk.	Gudi-yattam Taluk.	Walajahpet Taluk.	Arko-nam Taluk.	Cheygar (North.)	Total.
Money rates.						
(1)	(2)	(3)	(4)	(5)	(6)	(7)
RS. A.	ACS.	ACS.	ACS.	ACS.	ACS.	ACS.
3 8 ... ..	349	781	23	23	10	1,186
2 9 ... ..	9,746	5,440	1,670	317	339	17,512
2 0 ... ..	18,401	18,925	10,568	2,609	4,726	55,229
1 9 ... ..	18,337	20,824	27,170	14,135	13,610	94,076
1 1 ... ..	13,484	25,565	30,721	22,775	15,078	107,623
0 13 ... ..	9,671	15,563	18,436	22,312	5,168	71,210
0 8 ... ..	1,777	2,760	3,382	8,611	1,254	17,784
0 6 ... ..	...	171	703	889	...	1,763
Total ...	71,765	90,059	92,673	71,671	40,215	366,883
Special rates	45	81	485	579	114	1,304
Grant and Kayampatta.	150	50	...	...	...	200
Free hold ..	6	...	...	...	...	6
Bagayat ..	...	2,107	213	...	...	2,320
Original settle-ment of Mangadu.	...	...	628	...	...	628
Grand Total...	71,966	92,297	93,999	72,250	40,329	370,841

NOTE.—(1) Figures for Tirupattur and Tiruvannamalai taluks are given separately.

(2) The resettlement of the taluks of Polur, Wandiwash and South Cheyyar is in progress and revised figures are not yet available.



XI.—Classification of area and money rates according to resettlement—*cont.*

(Part 1. Area under each money rate)—*cont.*

*Wet (Single crop).*

Particulars.	Vellore Taluk.	Gudiyattam Taluk.	Walajahpet Taluk.	Arko-nam Taluk.	Cheyyar (North).	Total.
Money rates.						
(1)	(2)	(3)	(4)	(5)	(6)	(7)
Rs. A.	ACS.	ACS.	ACS.	ACS.	ACS.	ACS.
10 0 ...	...	...	4	38	...	42
9 6 ...	12	10	68	68	102	260
8 12 ...	...	24	308	182	177	691
8 2 ...	419	1,654	2,531	1,792	790	7,096
7 8 ...	312	773	2,563	1,274	904	5,826
6 14 ...	1,459	3,176	6,996	5,909	2,783	19,423
6 9 ...	...	128	2,381	1,496	462	4,467
6 4 ...	972	1,495	2,681	2,787	1,969	9,904
5 15 ...	1,360	3,033	6,092	6,618	3,112	20,215
5 10 ...	272	344	1,749	2,524	773	5,662
5 5 ...	733	1,793	2,402	3,526	1,984	10,438
5 0 ...	802	814	3,247	5,040	1,870	11,773
4 11 ...	151	351	1,031	1,462	601	3,596
4 6 ...	231	460	1,105	1,621	786	4,202
4 1 ...	223	314	907	2,027	497	3,968
3 12 ...	204	455	754	1,369	407	3,189
3 2 ...	9	252	378	606	298	1,543
2 8 ...	1	21	...	78	10	90
Total ...	7,160	15,097	34,297	38,307	17,524	112,385
Grant and Kayampatta.	39	...	...	...	...	39
Bagayat ...	...	42	3	...	...	45
Original settlement of Mangadu village.	...	...	490	...	...	490
Total ...	7,199	15,139	34,790	38,307	17,524	112,959

NOTE—(1) Figures for Tirupattur and Tiruvannamalai taluks are given separately.

(2) The resettlement of the taluks of Polur, Wandiwash and South Cheyyar is in progress and revised figures are not yet available.





XI.—Classification of area and money rates according to  
resettlement—*cont.*

(Part 1. Area under each money rate)—*cont.*

*Wet Double crop (occupied).*

Particulars.	Vellore Taluk.	Gudi- yattam Taluk.	Walaja- pet Taluk.	Arko- nam Taluk.	Cheyyar (North).	Total.
Money rates.	(2)	(3)	(4)	(5)	(6)	(7)
(1)	(2)	(3)	(4)	(5)	(6)	(7)
RS. A.	ACS.	ACS.	ACS.	ACS.	ACS.	ACS.
15 0 ... ..	...	...	46	125	54	225
13 2 ... ..	...	64	280	545	418	1,307
12 8 ... ..	52	84	95	197	30	458
11 4 ... ..	...	129	460	815	1,294	2,698
10 13 ... ..	842	1,788	437	350	463	3,880
9 14 ... ..	...	142	267	720	1,314	2,443
9 6 ... ..	203	99	40	11	60	413
9 3 ... ..	1,622	2,113	483	165	890	5,273
8 7 ... ..	...	...	13	296	298	607
8 4 ... ..	22	10	...	...	...	32
7 15 ... ..	740	673	174	118	1,217	2,922
7 13 ... ..	432	160	62	13	181	848
7 5 ... ..	5	...	...	...	1	6
7 1 ... ..	...	...	...	11	26	37
6 12 ... ..	39	22	16	3	14	94
6 11 ... ..	243	91	44	16	571	965
6 10 ... ..	177	54	28	2	110	371
5 13 ... ..	3	4	...	...	9	16
5 10 ... ..	35	8	...	...	39	82
5 8 ... ..	65	13	5	11	34	128
5 7 ... ..	7	3	3	...	205	218
4 12 ... ..	2	...	...	...	...	2
4 11 ... ..	30	1	1	...	1	33
4 8 ... ..	3	8	2	...	23	36
4 3 ... ..	...	4	18	...	31	53
3 15 ... ..	...	53	...	...	...	53
3 10 ... ..	3	10	...	...	...	13
Total ..	4,525	5,533	2,474	3,398	7,283	23,213
Compounded under well- rules.	5,159	3,255	783 4 *	431	768	10,340
Total ...	9,684	8,788	3,261	3,829	7,991	33,553

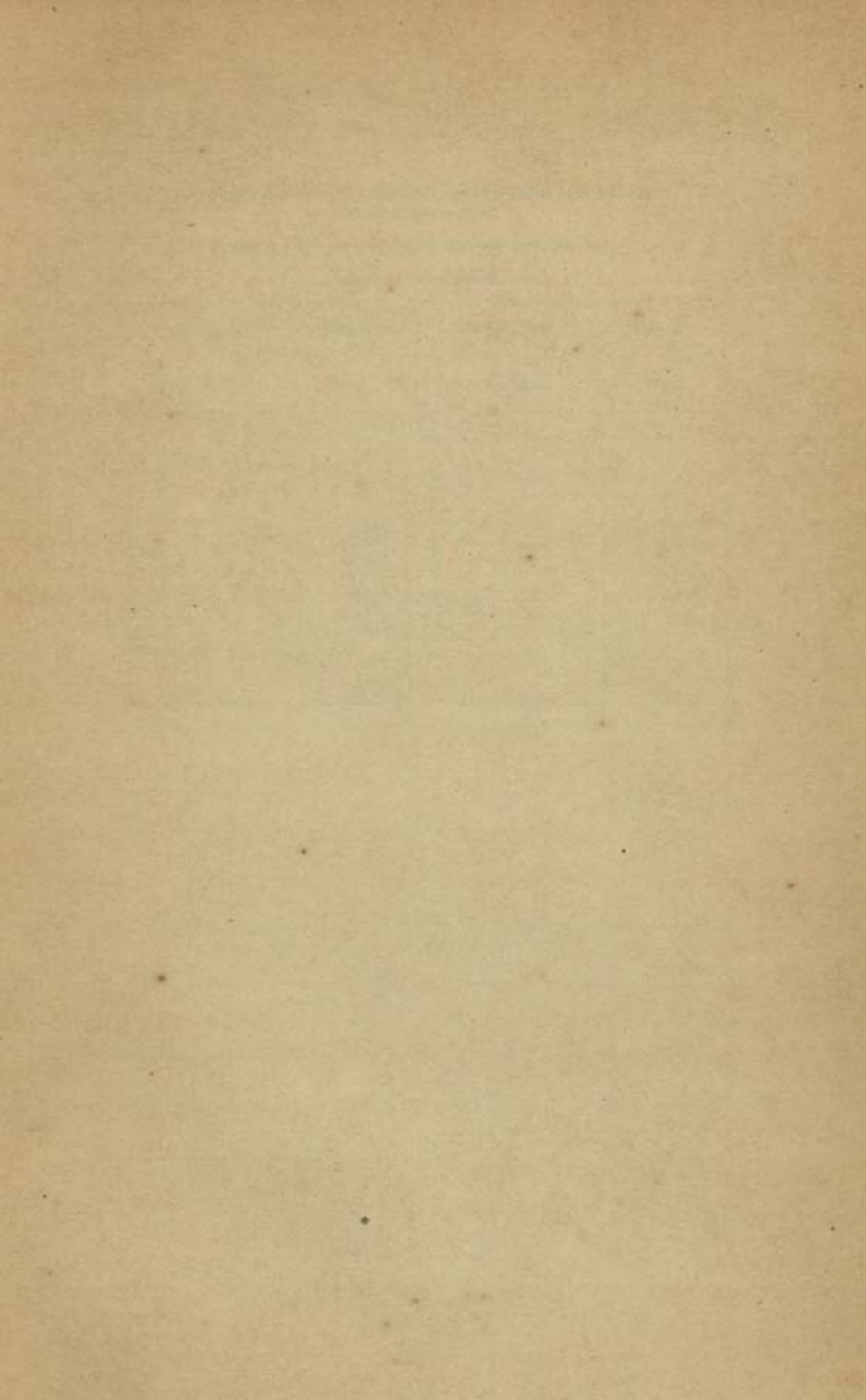
\* Original settlement of Mangadu village.

NOTE.—(1) Figures for Tiruppattur and Tiruvannamalai taluks are given separately.

(2) The resettlement of the taluks of Polur, Wandiwash and South Cheyyar is in progress and revised figures are not yet available.









XI.—Classification of area and money rates according to  
resettlement—*cont.*

(Part 1. Area under each money rate)—*cont.*

Tiruvannamalai Taluk.

Particulars.				Extent.	Particulars.				Extent.
Money rates.				Dry.	Money rates.				Wet.
RS.	A.			ACS.	RS.	A.			ACS.
3	8	...	...	...	9	0	...	...	...
3	0	...	...	...	8	0	...	...	...
2	8	...	...	...	7	0	...	...	552
2	0	...	...	2,315	6	0	...	...	3,435
1	8	...	...	15,483	5	0	...	...	7,152
1	4	...	...	42,552	4	8	...	...	9,322
1	0	...	...	67,616	4	0	...	...	5,693
0	12	...	...	65,313	3	8	...	...	2,346
0	8	...	...	28,127	3	0	...	...	407
0	6	...	...	4,819	2	8	...	...	76
Special rate				...					
2	8	...	...	477					
Grand Total				226,702	Grand Total				28,983



**XI.—Classification of area and money rates according to  
resettlement—*cont.***

(Part 2. Classes and sorts included under each money rate.)

Wet lands.									
Soils.					Irrigation class.				
III	IV	V	VII	VIII	First Class.	Second Class.	Third Class.	Fourth Class.	Fifth Class.
					RS. A.	RS. A.	RS. A.	RS. A.	RS. A.
...	1	...	...	...	10 0	9 6	8 12	8 2	7 8
1	2	...	1	...	8 12	8 2	7 8	6 14	6 4
2	3	1	2	1	7 8	6 14	6 4	5 10	5 0
3	4	2	3	2	6 9	5 15	5 5	4 11	4 1
4	5	3	4	3	5 10	5 0	4 6	3 12	3 2
5	...	4	5	4	4 11	4 1	3 12	3 2	2 8
...	...	5	...	5	3 12	3 2	3 2	2 8	2 8
Dry lands.									
III	IV	V	VII	VIII	Taram.	First Group.	Taram.	Second Group.	
						RS. A.		RS. A.	
1	1	...	...	...	1	3 8	2	2 9	
2	2	...	1	...	2	2 9	3	2 0	
3	3	1	2	1	3	2 0	4	1 9	
4	4	2	3	2	4	1 9	5	1 1	
5	5	3	4	3	5	1 1	6	0 13	
...	...	4	5	4	6	0 13	7	0 8	
...	...	5	...	5	7	0 8	8	0 6	

NOTE.—(1) The above classification applies only to the lands in the resettled taluks of Vellore, Gudiyattam, Walajahpet, Arkonam and North Cheyyar.

The rates of composition sanctioned for wet lands in these taluks are 1/2, 1/3, 1/4, 1/5 and 1/6 of single wet-crop charges according as the source is 1st, 2nd, 3rd, 4th or 5th class.

(2) Particulars relating to the taluks of Tiruvannamalai and Tirupattur are given separately.

(3) The resettlement of the taluks of Polur, Wandiwash and South Cheyyar is in progress.





XI.—Classification of area and money rates according to  
resettlement—*cont.*

(Part 2. Classes and sorts included under each money rate)—*cont.*

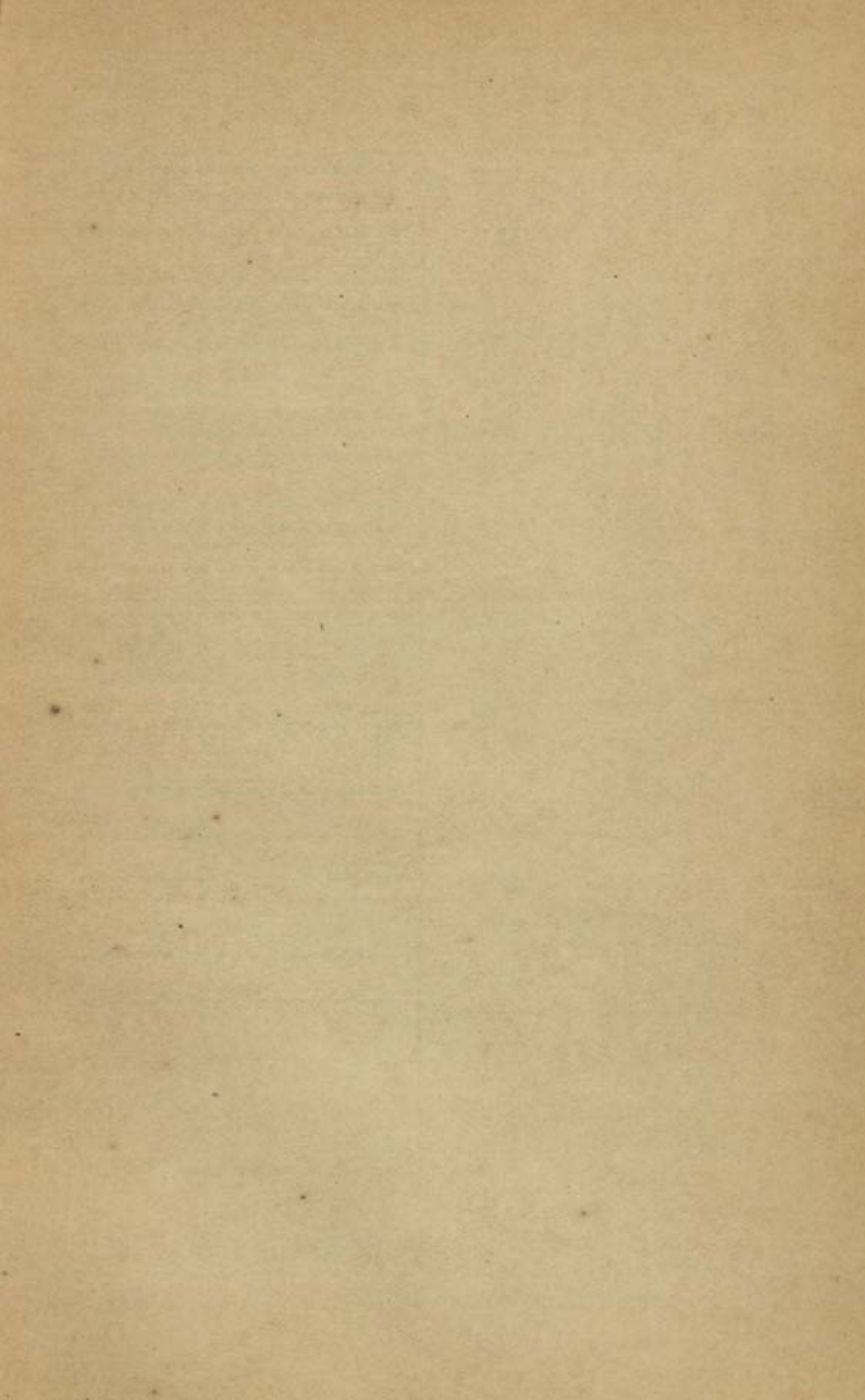
*Tirupattūr Taluk.*

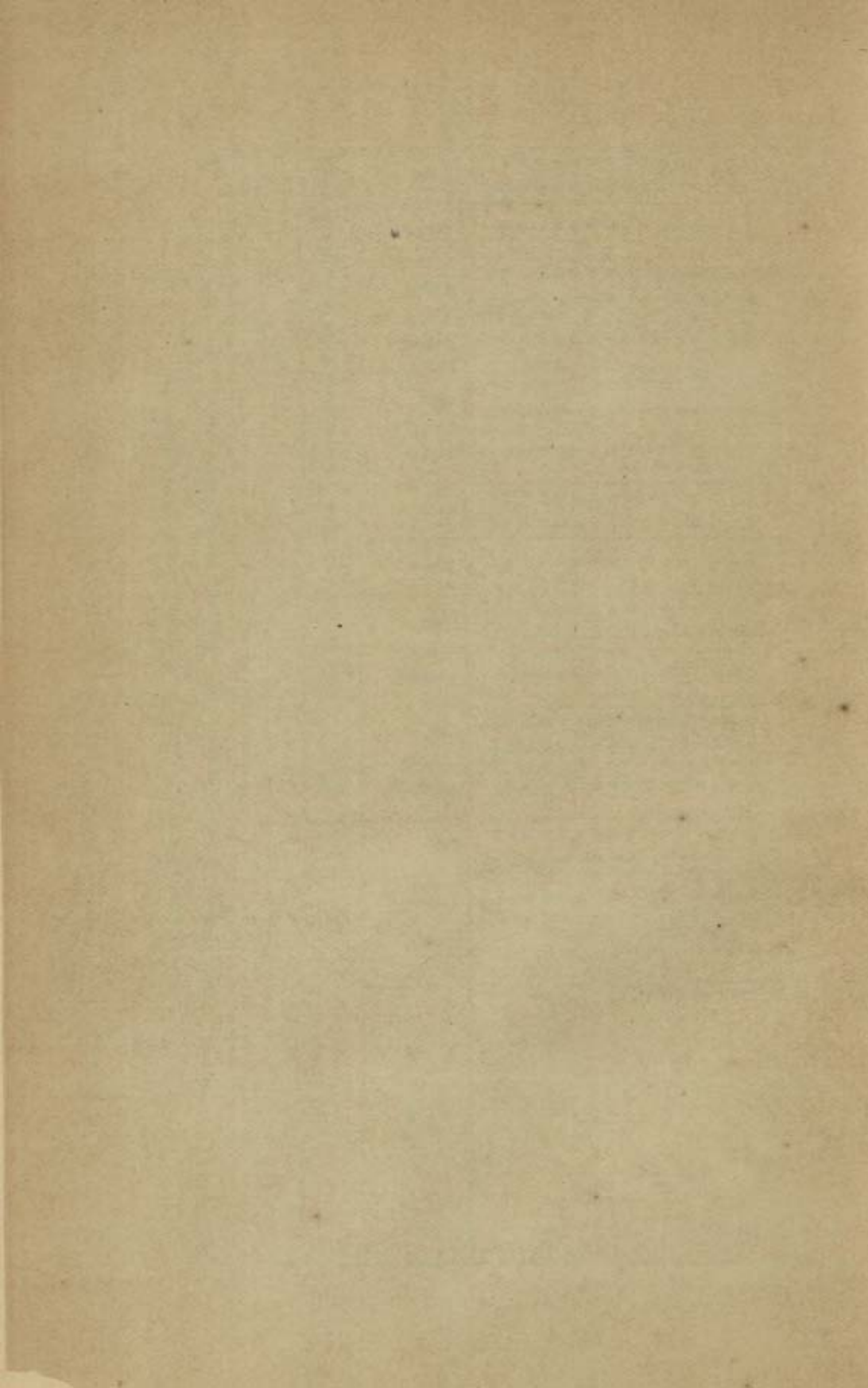
Dry.													
Soil classification.					Second Group.		Third Group.		Fourth Group.		Fifth Group.		
III	IV	V	VII	VIII	Taram.	Rate.	Taram.	Rate.	Taram.	Rate.	Taram.	Rate.	
						RS. A.		RS. A.		RS. A.		RS. A.	
...	1	...	...	...	4	2 12	5	2 0	6	1 6	...	...	
1	2	...	1	1	5	2 0	6	1 6	7	1 2	8	0 14	
2	3	1	2	2	6	1 6	7	1 2	8	0 14	9	0 9	
3	4	2	3	3	7	1 2	8	0 14	9	0 9	11	0 6	
4	5	3	...	...	8	0 14	9	0 9	10	0 7	...	...	
5	...	4	4	4	9	0 9	10	0 7	11	0 6	12	0 4	
...	...	5	5	5	10	0 7	12	0 4	12	0 4	13	0 3	

Wet.														
Soil classification.					First Class.		Second Class.		Third Class.		Fourth Class.		Fifth Class.	
III	IV	V	VII	VIII	Taram.	Rate.	Taram.	Rate.	Taram.	Rate.	Taram.	Rate.	Taram.	Rate.
						RS. A.		RS. A.		RS. A.		RS. A.		RS. A.
...	1	...	...	...	2	10 12	3	9 8	5	8 8	7	7 4	9	6 4
...	2	...	1	...	4	9 0	6	8 0	8	6 12	10	5 10	11	4 8
1	3	1	2	1	6	8 0	8	6 12	10	5 10	11	4 8	12	3 6
2	...	2	3	2	8	6 12	10	5 10	11	4 8	12	3 6	13	2 12
3	4	3	4	3	10	5 10	11	4 8	12	3 6	13	2 12	14	2 4
4	5	4	5	4	11	4 8	12	3 6	13	2 12	14	2 4	15	1 12
5	...	5	...	5	12	3 6	13	2 12	14	2 4	15	1 12	16	1 6













## XII.—Rainfall.

Names of rain-gauge stations.	Average rainfall (1870—1900) in inches in													
	(1)	(2)	(3)	(4)	(5)	(6)	(7)	(8)	(9)	(10)	(11)	(12)	(13)	(14)
TIRUPPATUR TALUK.														
Tirupattur	...	0.23	0.26	0.43	1.19	4.18	2.01	3.45	5.46	7.23	5.55	3.27	1.21	35.07
Vaniyambadi	...	0.38	0.18	0.28	0.91	5.01	2.17	2.53	4.79	0.90	5.51	3.57	1.70	33.02
GUDIYATTAM TALUK.														
Gudiyattam	...	0.42	0.36	0.33	0.86	3.58	2.67	3.19	4.88	7.15	6.87	4.70	2.07	35.78
KANGUNDI DIVISION.														
Kangundi †	...	0.26	0.28	0.25	1.22	3.83	1.91	2.33	4.45	.42	5.65	3.12	1.14	30.86
TIRUVANNAMALAI TALUK.														
Chengam ‡	...	0.69	0.40	0.77	1.60	3.16	.90	2.52	5.37	6.41	7.72	4.94	2.37	37.55
Tiruvannamalai	...	0.72	0.62	0.48	0.76	3.44	1.09	2.87	5.08	6.55	7.11	5.97	2.73	37.97
POLUR TALUK.														
Polur	...	0.57	0.41	0.22	0.58	2.71	2.15	2.65	5.85	7.59	7.09	5.72	2.90	58.03
WALLAJAPET TALUK.														
Arcot	...	0.58	0.53	0.42	0.73	3.59	2.97	3.73	6.18	6.70	6.48	6.09	3.97	40.36
Sholinghur §	...	2.18	0.11	0.27	0.73	3.30	3.03	3.04	7.40	5.50	6.49	5.83	3.14	40.45
Wallajapet	...	0.46	0.36	0.43	0.57	2.53	3.15	3.79	5.96	6.50	6.66	6.34	3.18	39.83



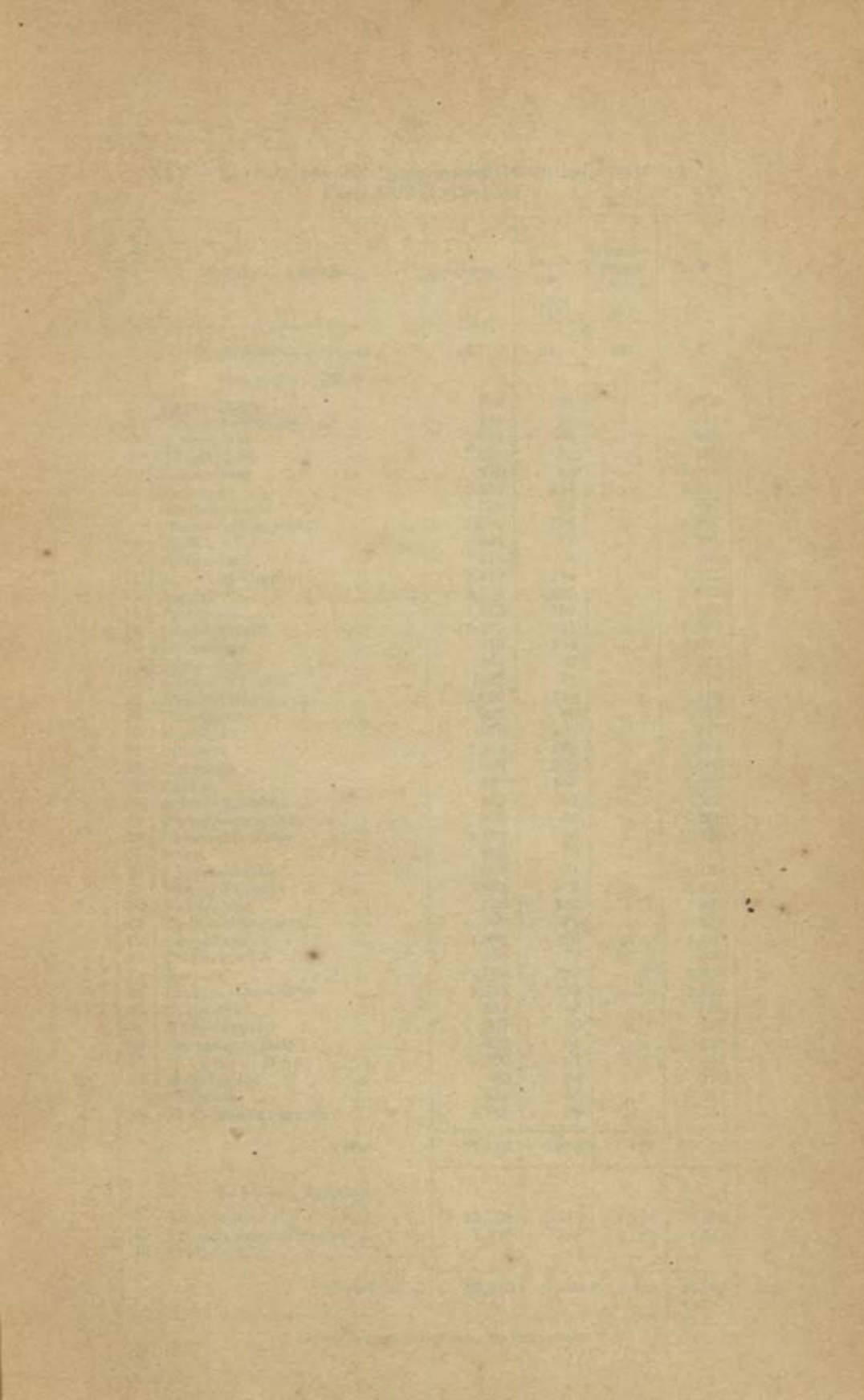


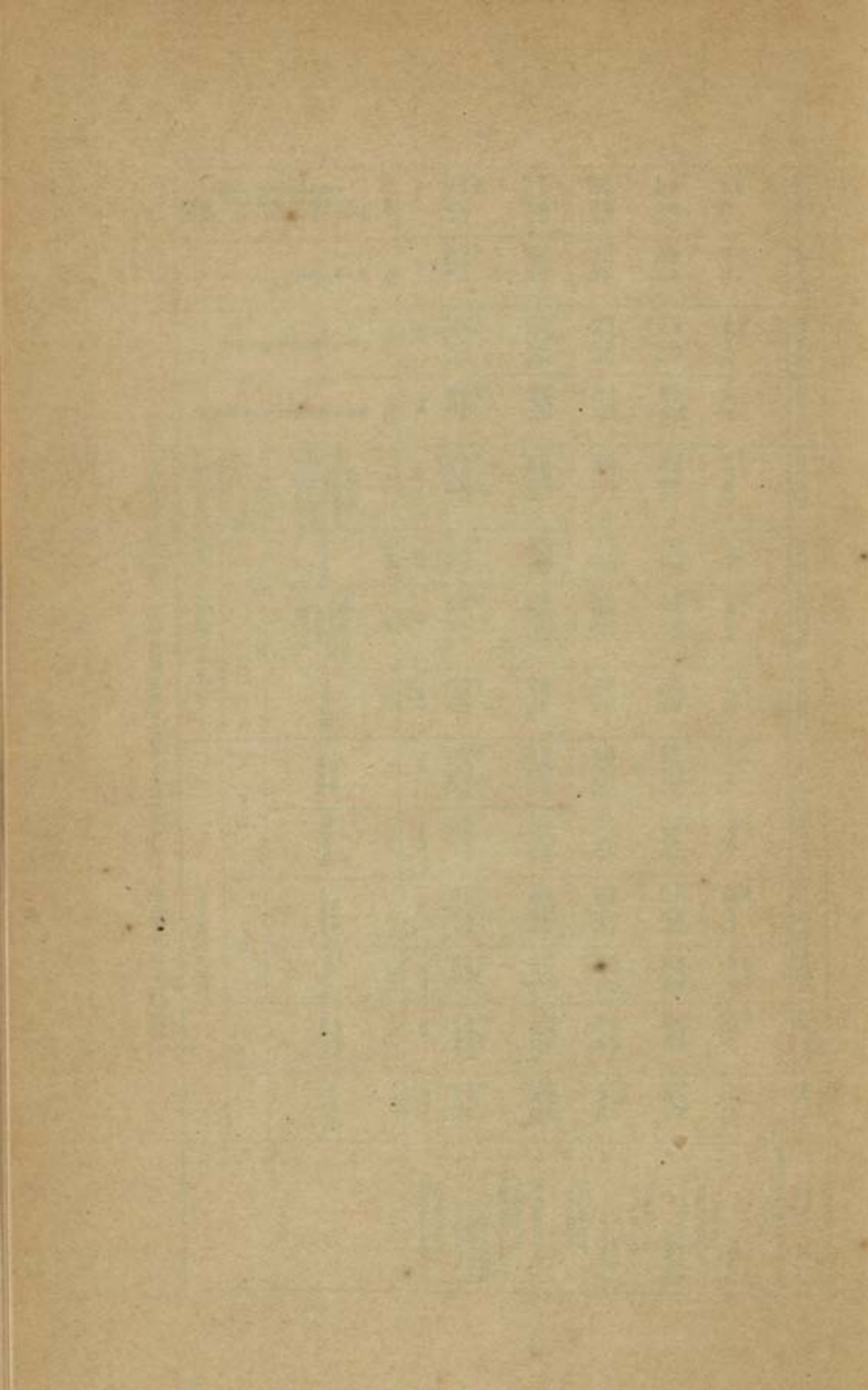




# XIII.—Holdings, Cultivation and Demand in Fasal 1322 (1912-13).

Taluka.	Total holdings.						Cultivation including waste charged.						Miscellaneous revenue.	Total ryotwar demand	Land Cesses.	Total demand of Land Revenue Ryotwar, Miscellaneous and Cesses.		
	Dry.		Wet.		Total.		Dry.		Wet.		Assessment including water-rate.	Extent.					Assessment including second-crop charge.	Extent.
	Extent.	Assessment.	Extent.	Assessment.	Extent.	Assessment.	Extent.	Assessment.	Extent.	Assessment.								
(1)	(2)	(3)	(4)	(5)	(6)	(7)	(8)	(9)	(10)	(11)	(12)	(13)	(14)	(15)				
TIRUPPATTUR DIVISION.																		
Tirupattur	77,793	84,034	8,276	61,124	86,009	1,35,168	77,524	85,072	8,232	50,802	7,100	1,41,415	9,595	1,50,941				
Gudiyar	79,594	1,05,508	23,972	1,46,758	163,568	2,52,325	79,535	1,13,736	23,964	1,82,546	24,256	2,53,649	19,153	3,02,802				
Kangundi	6	14	1	4	7	18	6	14	1	4	200	218	9	227				
TIRUVANMALAI DIVISION.																		
Tiruvannamalai	181,593	1,81,611	29,519	1,38,554	211,112	3,29,165	180,882	2,18,474	29,482	1,60,301	31,580	3,88,571	25,087	4,13,658				
Polar	86,994	88,917	28,372	1,83,487	115,366	2,22,464	86,693	1,02,348	28,548	1,48,211	23,535	2,70,256	17,399	2,87,658				
RANIPET DIVISION.																		
Wallajpet	79,465	95,781	37,290	1,96,611	116,005	2,92,392	79,398	1,11,368	37,190	2,17,614	25,229	3,36,298	23,851	3,62,149				
Arkonam	63,829	65,461	40,652	2,07,698	104,781	2,75,769	63,860	82,525	40,602	2,24,266	19,841	3,24,540	21,139	3,45,679				
CHEYYAR DIVISION.																		
Cheyyar	61,328	76,597	39,533	2,19,557	100,601	2,95,824	61,311	89,958	39,279	2,42,269	28,362	3,57,047	22,316	3,80,363				
Wandiwash	86,464	98,355	31,317	1,65,830	117,721	2,63,794	86,404	1,15,514	31,596	1,82,034	29,957	3,21,443	20,598	3,42,441				
VELLORE DIVISION.																		
Vellore	68,932	97,075	16,977	1,46,106	83,269	2,63,155	68,298	1,03,357	16,997	1,07,537	15,929	2,21,095	14,430	2,35,525				
Arul	21	43	17	145	38	188	21	43	17	145	56	244	16	259				
HUZUR COLLECTIONS																		
Total	783,190	9,03,010	225,936	13,65,493	1,64,135	22,68,603	783,791	10,22,389	253,458	14,76,829	2,69,542	29,40,975	1,74,923	32,24,898				







XIV.—Revenue payable by permanently-settled estates in  
Fasli 1322 (1912-13).

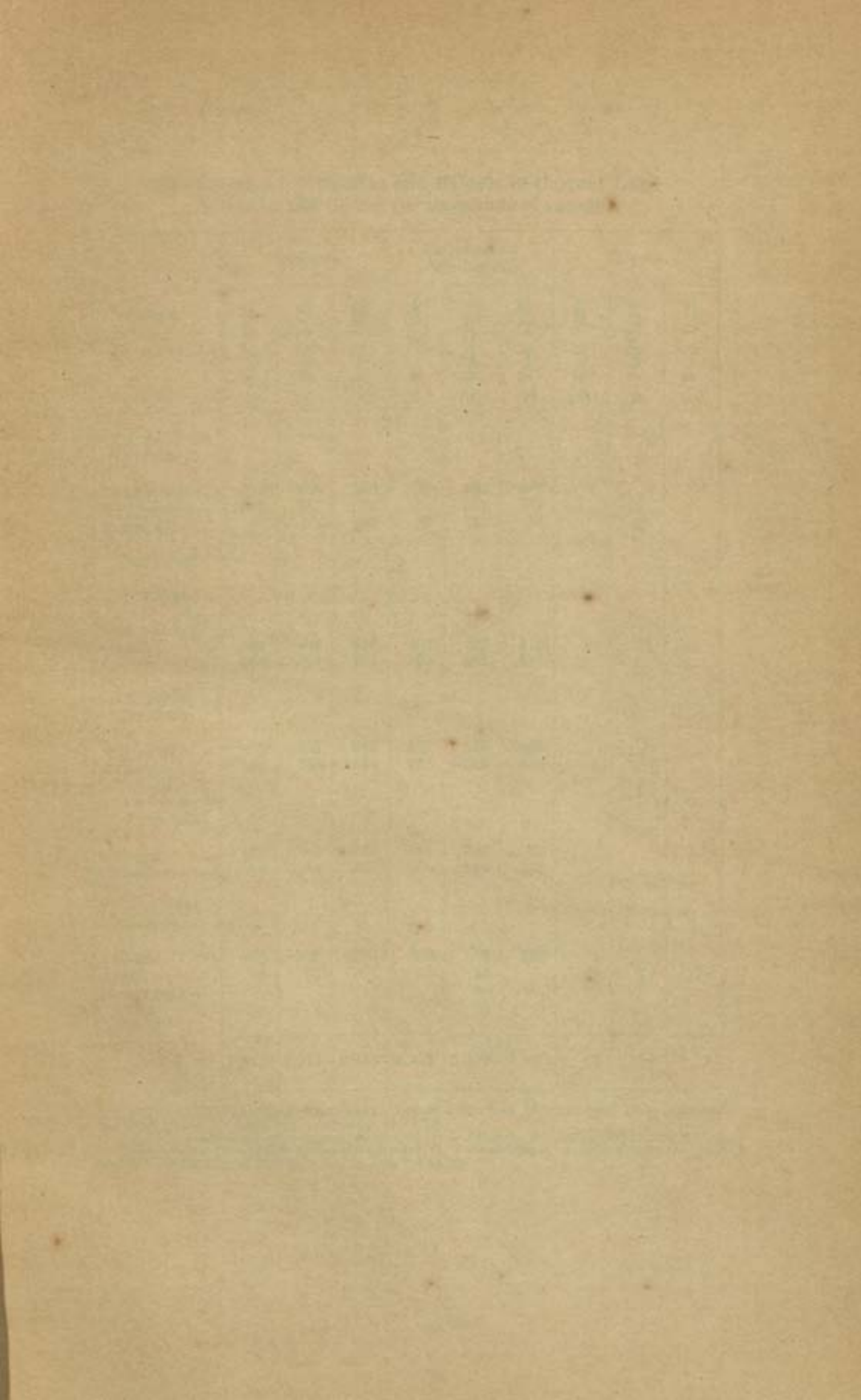
Serial number.	Taluka and estates.	Peishcush.	Land- cess.	Miscella- neous revenue.	Total.
(1)	(2)	(3)	(4)	(5)	(6)
<b>TIRUPPATTUR DIVISION.</b>					
<i>Tiruppattūr Taluk.</i>					
		RS.	RS.	RS.	RS.
1	Elayanagaram ... ..	334	29	...	363
2	Chikkanankuppam ... ..	183	21	...	214
3	Alinjekalam ... ..	781	69	...	850
4	Madananjeri ... ..	391	39	...	430
5	Devastanam ... ..	943	84	...	1,027
6	Amburpet ... ..	2,405	234	...	2,639
7	Govindapuram ... ..	772	65	...	837
8	Chinnaveppambattu ... ..	1,889	178	...	1,867
9	Vallipattu ... ..	764	87	...	851
10	Pallipattu ... ..	545	64	...	609
11	Sammandikuppam ... ..	1,410	115	...	1,525
12	Elagiri ... ..	5,736	1,216	...	6,952
13	Pathavalli ... ..	1,073	159	...	1,232
14	Selandampalli ... ..	3,325	351	...	3,676
15	Periagaram ... ..	915	104	...	1,019
16	Narasampatti ... ..	834	88	...	922
17	Kadramangalam ... ..	657	71	...	728
18	Karinaiyakampatti ... ..	1,093	126	...	1,219
19	Puthagaram ... ..	927	85	...	1,012
20	Mukkaner ... ..	876	101	...	977
21	Pillaneri ... ..	2,604	289	...	2,893
22	Tiriyalam ... ..	1,899	209	...	2,108
23	Pachal ... ..	899	163	...	1,062
24	Achamangalam ... ..	472	57	...	529
25	Melachamangalam ... ..	396	62	...	458
26	Chinnasamudram ... ..	1,460	156	...	1,616
27	Aneri ... ..	892	79	...	971
28	Puchamaugalam ... ..	1,038	91	...	1,129
29	Bommaikoppam ... ..	5,461	467	...	5,928
30	Kakangarai ... ..	837	105	...	942
31	Periyakannalapatti ... ..	743	71	...	814
32	Periyakandili ... ..	1,438	270	...	1,708
33	Chinnakandili ... ..	454	72	...	526
34	Nattam ... ..	2,598	265	...	2,863
35	Lakkisayakampatti ... ..	1,697	415	...	2,412
36	Narianeri ... ..	352	42	...	394
37	Hanumanpatti ... ..	307	79	...	386
38	Badananadi East ... ..	370	51	...	421
39	Do. West ... ..	370	67	...	437
40	Mankuppam ... ..	86	84	...	170
41	Pallapalli ... ..	379	38	...	417
42	Mantalansayanagunta ... ..	385	68	...	453
	Total ...	51,100	6,488	*19	506,75
<b>KANGUNDI DIVISION.</b>					
43	Kangundi estate ... ..	21,589	6,913	1,734	30,236
44	Thimmajiammal's estate ... ..	1,347	389	81	1,817
45	Govindapalle ... ..	4	1	...	5
	Total ...	22,940	7,303	1,815	32,058

\* Details are not forthcoming for this figure.



XIV.—Revenue payable by permanently-settled estates in  
Fasli 1322 (1912-13)—*cont.*

Serial number.	Taluk and estates.	Peishcush.	Land- cess.	Miscella- neous revenue.	Total.
(1)	(2)	(3)	(4)	(5)	(6)
	<b>TIRUVANNĀMALAI DIVISION.</b>	RS.	RS.	RS.	RS.
	<i>Tiruvannāmalai Taluk.</i>				
46	Vettavalam estate ... ..	33	690	30	753
	<b>RANIPET DIVISION.</b>				
	<i>Arkonam Taluk.</i>				
47	Arigalavady Mittah ... ..	2,018	311	387	2,714
	<b>VELLORE DIVISION.</b>				
48	Arni Jaghir ... ..	5,015	16,374	259	21,648
	<b>District Total</b> ... ..	81,104	31,164	2,510	1,14,778





**XV.—Demand, Collection and Balance of Current Land Revenue and Cesses (in thousands of rupees).**

Taluks.	Demand.			Collected or written off.			Balance.		
	Fasli 1320.	Fasli 1321.	Fasli 1322.	Fasli 1320.	Fasli 1321.	Fasli 1322.	Fasli 1320.	Fasli 1321.	Fasli 1322.
(1)	(2)	(3)	(4)	(5)	(6)	(7)	(8)	(9)	(10)
<b>TIRUPPATTUR DIVISION.</b>									
Tiruppattūr ...	213	208	212	210	206	211	3	2	1
Gudiyattam ...	310	281	303	310	281	303	...	...	...
Kangundi ...	36	35	32	36	35	32	...	...	...
<b>TIRUVANNAMALAI DIVISION.</b>									
Tiruvannāmalai ...	421	408	416	402	407	416	19	1	...
Polur ...	294	285	287	294	285	287	...	...	...
<b>RANIPET DIVISION.</b>									
Wallajapet ...	363	355	365	363	355	365	...	...	...
Arkonam ...	360	343	354	355	343	354	5	...	...
<b>CHEYGAR DIVISION.</b>									
Cheygar ...	391	388	388	391	388	388	...	...	...
Wandiwash ...	339	354	342	339	354	342	...	...	...
<b>VELLORE DIVISION.</b>									
Vellore ...	240	218	236	239	218	236	1	...	...
Arni ...	45	32	...	6	13	...	39	19	...
Huzur collections ...	...	4	3	...	4	3	...	...	...
<b>Total ...</b>	<b>3,012</b>	<b>2,911</b>	<b>2,938</b>	<b>2,945</b>	<b>2,889</b>	<b>2,937</b>	<b>67</b>	<b>22</b>	<b>1</b>

NOTE.—(1) As the district was newly formed with effect from 1st April 1911, statistics are reported for the years beginning with fasli 1320.

(2) The particulars of demand, collection and balance for fasli 1322 in respect of Arni jaghir have been shown to be nil under orders of Government directing that the dues from this estate for the fasli falls due in July following.



## XVI.—Remissions (in thousands of rupees).

Taluka.	Waste remitted.								Other seasonal remissions (excluding fixed remissions).			
	Wet.				Dry.							
	Fasli 1320.	Fasli 1321.	Fasli 1322.	Total.	Fasli 1320.	Fasli 1321.	Fasli 1322.	Total.	Fasli 1320.	Fasli 1321.	Fasli 1322.	Total.
(1)	(2)	(3)	(4)	(5)	(6)	(7)	(8)	(9)	(10)	(11)	(12)	(13)
TIRUPPATTUR DIVISION.												
Tiruppattur ...	...	6	2	8	...	...	...	...	...	5	1	6
Gudiyattam ...	1	8.4	...	8.5	...	...	...	...	6	5.5	2	6.3
TIRUVANNAMALAI DIVISION.												
Tiruvannamalai ...	...	4	...	4	...	...	...	...	4	4	3	1.1
Polur ...	...	3	1	4	...	...	...	...	2	3	5	1
RANIPET DIVISION.												
Wallajpet ...	...	1	...	1	...	...	...	...	...	3	3	6
Arkonam ...	...	1	9	1	...	...	...	...	3	4.6	2	5
CHEYYAR DIVISION.												
Cheygar ...	...	...	2	2	...	...	...	...	3	2	1.2	1.7
Wandiwash ...	...	...	3	3	...	...	...	...	5	3	8	1.6
VELLORE DIVISION.												
Vellore ...	...	1	7.6	...	7.7	...	...	...	2	3.8	...	4
District Total ...	3	19.2	8	20.3	...	...	...	...	2.5	15.9	3.6	22

NOTE.—The district was formed on 1st April 1911 and hence figures for three faslis only have been reported.





## XVII.—Land Improvement and Agriculturists' Loans.

Taluka.	Total amount advanced under the Land Improvement and Agriculturists' Loans Acts in			Total re- covered from 11th April to 30th June 1913.
	Faali 1321.	Faali 1322.	Total including out- standing balance on 31st March 1911.	
(1)	(2)	(3)	(4)	(5)
TIRUPATTŪR DIVISION.				
	RS.	RS.	RS.	RS.
Tirupattūr ... ..	...	500	2,387	637
Gudiyattam ... ..	1,300	3,400	49,381	12,541
TIRUVANNAMALAI DIVISION.				
Tiruvannamalai ... ..	850	2,700	67,642	12,035
Polur ... ..	3,550	8,250	62,123	19,023
RANIPET DIVISION.				
Walajapet ... ..	475	2,975	32,929	10,678
Arkonam ... ..	2,000	2,245	37,800	10,370
CHEYYAR DIVISION.				
Cheygar ... ..	2,100	6,545	53,953	12,881
Wandiwash ... ..	3,800	7,425	97,201	25,702
VELLOBE DIVISION.				
Vellore ... ..	1,575	3,475	22,865	7,840
Arni ... ..	...	500	500	...
District total ...	15,650	33,015	426,761	111,707

NOTE.—The district was formed from 1st April 1911. Hence no particulars are reported for faalis 1314 to 1320.



## XVIII.—Prices in seers per rupee.

Fasli.	Tirupattur Division.			Tiruvannamalai Division.		Ranipet Division.		Cheyyar Division.		Vellore Division.			(9) District Average.		
	(2) Tirupattur.	(3) Vaniyambudi.	(4) Gudiyattam.	(5) Kangundi.	(6) Tiruvannamalai Taluk.	(7) Polar.	(8) Walajapet.	(9) Arcot.	(10) Arkonam.	(11) Tiruvattur.	(12) Wandiwash.	(13) Vellore.		(14) Ambur.	(15) Arni.
1313	121	141	123	126	142	152	139	135	147	...	156	138	140	148	140
1314	...	...	...	...	...	...	...	...	...	...	...	...	...	...	...
1315	943	976	1028	931	949	1100	934	1048	1004	...	1084	1029	985	997	1001
1316	89	93	88	83	88	101	93	94	92	...	97	92	91	91	92
1317	...	...	...	...	...	...	...	...	...	...	...	...	...	...	...
1318	78	84	75	79	82	89	83	86	79	...	88	78	87	81	82
1319	...	...	...	...	...	...	...	...	...	...	...	...	...	...	...
1320	96	91	101	88	96	102	83	98	87	...	98	84	96	95	93
1321	94	104	103	107	96	114	99	72	93	107	108	94	102	103	100
1322	85	89	91	85	88	97	84	...	85	92	99	83	93	88	90
...	...	...	...	...	...	...	...	...	...	...	...	...	...	...	...
...	70	69	79	77	75	84	73	...	69	74	84	70	76	72	75

Rice (second sort).





## Paddy (first sort).

1313	...	16.5	21.5	21.7	21.0	23.0	23.1	21.7	21.6	...	...	20.3	22.8	22.9	21.5
1314	...	16.0	19.2	19.5	16.6	18.7	19.0	18.1	17.5	...	...	17.7	19.6	19.0	18.3
1315	...	13.03	12.85	14.52	13.02	14.77	14.68	15.50	15.05	...	...	14.71	14.68	15.88	14.42
1316	...	13.1	13.0	12.6	12.3	13.8	14.0	15.0	13.7	...	...	13.1	14.5	13.9	13.5
1317	...	12.0	12.0	9.7	11.9	13.1	13.3	12.4	12.7	...	...	11.2	12.8	12.9	12.2
1318	...	11.8	11.3	8.8	9.9	12.3	12.2	11.2	12.2	...	...	10.8	11.4	12.5	11.3
1319	...	14.2	12.4	12.2	13.0	14.8	14.8	13.6	14.5	...	...	13.0	14.3	14.1	13.7
1320	...	14.9	14.0	14.0	16.4	15.7	17.1	15.6	15.1	...	17.4	13.9	16.4	16.0	15.6
1321	...	12.7	13.3	11.6	13.7	14.2	14.5	13.9	...	...	15.2	12.9	14.0	14.4	13.7
1322	...	10.7	10.7	10.0	11.8	11.7	12.4	11.4	...	...	12.0	11.0	11.3	11.7	11.3

## Paddy (second sort).

1313	...	21.6	24.0	23.1	21.5	24.7	25.4	23.9	22.6	...	...	22.7	24.3	25.9	24.2
1314	...	20.3	21.1	20.7	17.6	19.7	20.8	20.1	19.3	...	...	19.1	20.4	20.6	20.1
1315	...	16.06	15.58	15.62	14.25	15.37	16.88	16.18	16.55	...	...	15.67	15.67	16.95	15.98
1316	...	14.1	15.2	13.8	...	14.4	15.6	15.5	15.2	...	...	15.5	15.3	15.7	14.9
1317	...	13.0	13.4	10.9	13.2	13.5	14.3	13.2	13.3	...	...	14.1	13.9	14.3	13.2
1318	...	12.7	11.9	10.0	10.5	13.1	13.3	13.1	13.0	...	...	13.7	12.4	13.5	12.4
1319	...	15.3	15.0	13.4	14.1	15.4	16.2	16.7	16.7	...	...	15.7	16.4	16.2	15.4
1320	...	15.8	17.6	15.4	18.1	16.2	19.2	16.4	16.3	...	...	19.7	17.8	17.8	17.1
1321	...	13.3	14.7	12.5	14.7	14.8	15.8	14.7	...	...	16.5	13.7	14.7	15.7	14.8
1322	...	11.4	11.7	10.6	12.9	12.0	13.9	12.4	...	...	13.0	11.3	11.6	13.2	12.3

## Horsegram.

1313	...	27.2	28.6	25.8	30.3	24.6	22.5	23.6	23.4	19.9	...	19.3	24.2	23.1	24.4
1314	...	20.4	18.4	19.0	19.7	19.0	17.1	17.8	17.5	16.0	...	15.8	18.5	19.3	18.3
1315	...	13.74	13.17	13.46	14.45	12.53	13.27	11.88	13.11	11.73	...	11.82	14.30	13.12	13.0
1316	...	14.5	14.4	13.8	14.5	13.7	13.2	12.3	13.6	12.5	...	12.0	14.6	14.6	13.6
1317	...	16.7	16.2	15.0	14.4	15.9	16.0	15.6	16.1	14.5	...	13.3	16.8	17.3	16.1
1318	...	12.5	13.3	13.6	13.9	12.6	12.2	12.0	11.7	12.8	...	11.7	14.0	14.3	12.8
1319	...	10.8	10.4	10.5	12.2	10.4	10.3	10.5	10.7	11.9	...	9.8	11.0	11.1	10.4
1320	...	14.8	13.4	13.7	16.0	12.1	13.1	13.7	13.4	11.4	15.3	12.5	14.6	14.0	13.8
1321	...	15.5	15.4	16.0	1.3	14.7	14.8	14.8	...	13.6	13.8	13.8	16.5	15.4	15.4
1322	...	14.2	15.0	14.6	16.2	14.1	13.9	14.2	...	12.9	13.6	12.8	14.7	13.9	14.2



XVIII.—Prices in seers per rupee—*cont.*

(1)	Tirupattur Division.				Tiruvannamalai Division.		Ranipet Division.		Cheyyar Division.	Vellore Division.				(16)	(17) District Average.
	Tirupattur Taluk.	Vaniamambadi.	Gudiyattam Taluk.	Kangundi Division.	Tiruvannamalai Taluk.	Polar Taluk.	Walajapet Taluk.	Walajapet Taluk.	Arakonam Taluk.	Tiruvattur.	Wandiwasah Taluk.	Vellore.	Ambur.	Arni.	
1313	25.3	26.6	25.8	31.4	25.9	27.4	...	24.4	...	...	...	26.4	27.4	25.8	26.7
1314	18.2	18.0	17.5	23.6	16.2	18.1	...	21.6	...	...	...	19.2	19.3	18.6	19.0
1315	14.33	14.50	13.91	16.94	14.40	15.35	...	...	...	...	...	15.69	14.90	14.86	14.95
1316	13.2	14.2	13.0	15.0	12.6	13.3	...	...	...	...	...	14.1	13.8	13.1	13.6
1317	11.3	11.1	11.3	14.2	11.3	11.5	...	...	...	...	...	11.6	12.1	10.9	11.7
1318	9.7	10.0	10.3	11.1	9.9	10.3	...	...	...	...	...	11.1	11.0	10.6	10.4
1319	11.4	13.3	12.3	14.4	11.8	12.9	...	...	...	...	...	12.7	16.9	12.2	13.1
1320	17.6	18.2	13.9	22.9	16.4	16.7	...	...	...	...	...	13.3	21.0	16.0	17.3
1321	14.6	14.0	12.0	14.5	13.8	13.9	12.3	...	...	12.3	...	12.4	14.1	14.0	13.4
1322	10.8	9.9	10.1	13.1	11.4	10.3	9.8	...	...	10.1	...	11.1	11.8	10.4	10.8

Cumb.





## Varegu.

1313	...	...	...	...	48.2	54.0	...	52.8	...	...	...	...	54.0	52.3
1314	...	...	...	...	50.1	40.1	...	37.8	...	...	...	...	41.4	42.4
1315	...	...	...	...	22.40	31.31	...	...	...	...	...	...	29.22	27.64
1316	...	...	...	...	27.3	28.1	...	...	...	...	...	...	...	27.7
1317	...	...	...	...	...	26.9	...	...	...	...	...	...	...	26.9
1318	...	...	...	...	...	23.5	...	...	...	...	...	...	...	23.5
1319	...	...	...	...	...	25.7	...	...	...	...	...	...	...	25.7
1320	...	...	...	...	...	29.5	...	...	...	...	...	...	...	29.5
1321	...	...	...	...	...	27.3	...	...	...	...	...	...	...	30.0
1322	...	...	...	...	...	24.4	...	...	...	...	...	...	...	24.4

## Fagi.

1313	...	...	...	...	25.7	25.4	22.8	25.1	24.0	...	22.5	26.0	25.9	24.0	25.7
1314	...	...	...	...	19.0	18.5	18.2	19.8	18.0	...	18.8	21.5	20.7	18.4	19.8
1315	...	...	...	...	14.90	14.51	13.62	14.50	13.96	...	14.26	16.23	15.75	14.52	15.13
1316	...	...	...	...	12.9	13.0	11.7	12.2	11.8	...	12.4	14.4	14.0	13.1	13.3
1317	...	...	...	...	13.0	13.0	11.9	12.8	11.9	...	12.2	12.7	13.8	12.7	12.9
1318	...	...	...	...	12.0	11.9	10.9	11.8	11.8	...	11.6	12.8	12.1	11.6	11.7
1319	...	...	...	...	13.3	13.0	11.7	12.7	11.8	...	12.5	13.6	13.4	12.2	12.7
1320	...	...	...	...	12.7	13.4	13.1	14.2	13.0	...	13.6	15.1	16.0	13.9	14.3
1321	...	...	...	...	13.6	12.9	12.7	...	13.0	...	13.4	14.6	14.4	13.4	13.7
1322	...	...	...	...	13.1	12.1	11.6	...	12.3	...	12.1	12.6	13.2	11.4	12.4

## Salt.

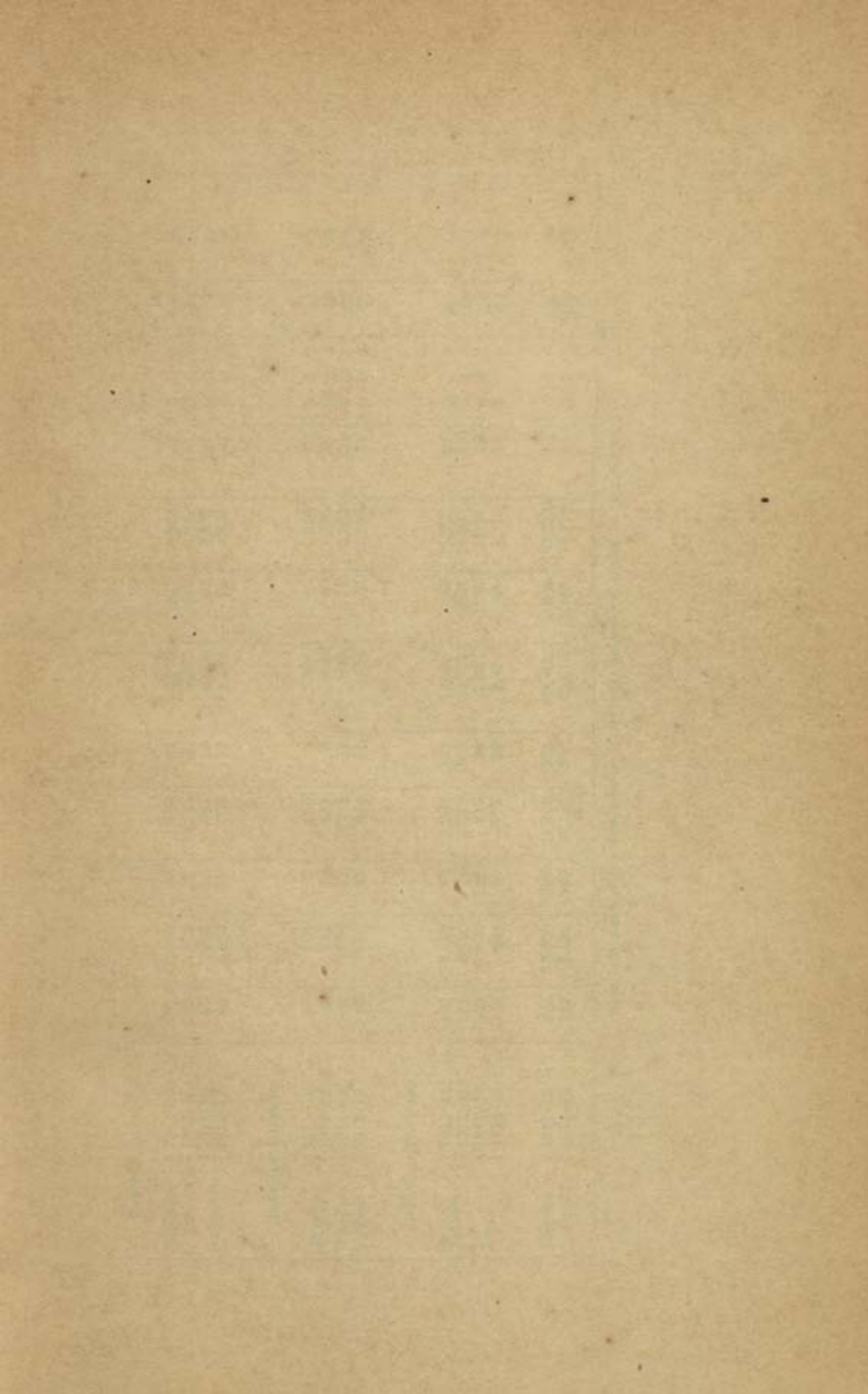
1313	...	...	...	...	15.0	15.2	15.1	15.2	15.2	...	15.2	15.6	15.2	14.8	15.1
1314	...	...	...	...	16.0	15.2	14.8	14.9	15.9	...	16.1	16.8	15.1	14.6	14.9
1315	...	...	...	...	17.45	16.21	16.43	18.17	19.19	...	19.25	19.40	16.79	16.60	17.28
1316	...	...	...	...	16.2	18.8	20.0	18.9	20.0	...	20.6	20.8	18.0	19.0	19.1
1317	...	...	...	...	23.7	23.8	25.4	23.2	24.3	...	23.7	23.2	22.0	23.8	23.1
1318	...	...	...	...	24.1	24.5	25.3	22.6	24.1	...	24.0	24.8	21.1	22.4	22.5
1319	...	...	...	...	23.0	23.6	23.8	23.2	24.4	...	23.0	23.6	19.6	21.1	22.5
1320	...	...	...	...	24.5	23.5	23.5	23.5	24.3	...	23.4	24.0	20.5	22.9	23.1
1321	...	...	...	...	24.6	23.8	23.4	...	23.6	...	23.1	24.0	21.0	23.1	23.0
1322	...	...	...	...	23.5	23.5	23.7	...	23.1	...	24.2	22.7	30.5	21.8	22.7



XIX.—Income-tax,

(Part IV, "Other sources" only.)

Taluk.	Rs. 1,000 to Rs. 1,500.		Rs. 1,500 to Rs. 2,000.		Above Rs. 2,000.		Total.		Incidence of tax.		Objection petitions.	
	Number of assesses.	Amount of tax.	Number of assesses.	Amount of tax.	Number of assesses.	Amount of tax.	Number of assesses.	Amount of tax.	Per head of assesses.	Per head of population.	Number.	Percentage of these, wholly or partially successful.
(1)	(2)	(3)	(4)	(5)	(6)	(7)	(8)	(9)	(10)	(11)	(12)	(13)
TIRUPPUR DIVISION.												
Tiruppur- tar.	44	1,122	41	1,646	68	6,011	153	8,778	57	0 0 8	65	22
Gudiyat- tam.	48	1,144	52	2,090	46	5,617	146	8,791	60	0 0 8	61	23
Kangundi.	52	1,272	30	1,155	35	3,929	117	6,356	54	0 0 6	49	18
	51	1,286	33	1,230	38	4,055	120	6,521	54	0 0 6	50	4
	25	560	11	336	11	1,482	47	2,378	51	0 0 7	13	50
	40	896	14	511	11	1,422	65	2,829	44	0 0 8	41	20
TIRUVANMALAI DIVISION.												
Tiruvanna- malai.	57	1,332	37	1,344	38	4,074	132	6,750	51	0 0 5	63	5
Polar.	80	1,776	34	1,299	48	4,904	162	7,979	49	0 0 6	88	15
	47	1,028	13	504	17	1,434	77	2,966	39	0 0 4	14	15
	46	962	16	651	16	1,424	78	3,097	41	0 0 4	29	12





RANIPET DIVISION.		97	2,068	40	1,723	54	4,015	191	7,806	41	0 0 7	81	14
Wallaja- pet.	{ 1911-12 ...	132	2,804	57	2,184	54	4,851	243	9,889	41	0 0 9	114	14
	{ 1912-13 ...	40	908	15	581	14	1,516	69	3,005	44	0 0 4	34	18
	{ 1911-12 ...	63	1,539	19	763	12	1,544	94	3,846	41	0 0 5	53	17
CHETTYAR DIVISION.													
Chettyar.	{ 1911-12 ...	31	708	7	266	4	376	42	1,350	32	0 0 2	23	4
	{ 1912-13 ...	32	712	13	483	5	456	50	1,651	33	0 0 2	39	23
	{ 1911-12 ...	40	895	21	724	11	843	72	2,463	34	0 0 3	68	6
Wandi. wash.	{ 1912-13 ...	46	976	17	644	12	948	75	2,568	34	0 0 3	37	24
VELLORE DIVISION.													
Vellore.	{ 1911-12 ...	119	2,748	60	2,222	101	12,490	290	17,450	62	0 1 3	139	15
	{ 1912-13 ...	152	3,456	74	2,870	105	12,577	331	18,903	57	0 1 4	139	21
	{ 1911-12 ...	42	828	22	812	19	2,321	83	4,061	49	0 0 7	16	9
Arni.	{ 1912-13 ...	43	964	20	777	21	2,478	84	4,219	50	0 0 8	14	12
District Total.	{ 1911-12 ...	594	13,570	297	11,312	372	38,491	1,263	63,373	50	0 0 6	565	16
	{ 1912-13 ...	733	16,495	349	13,442	366	40,276	1,448	70,213	48	0 0 7	660	13

NOTE.—Statistics are given only for two years as the district was formed on 1st April 1911.



## XX.—Abkāri and Opium.

	1911-12.	1912-13.
<i>Country spirits.</i>		
Number of retail shops licensed ...	478	446
Issues in imperial proof gallons ...	110,256	134,166
Number of persons per retail shop.	4,102	4,397
Gross receipts from duty ... Rs.	7,27,137	8,43,896
Do. rentals ..	2,02,857	2,42,674
<i>Toddy.</i>		
Number of retail shops licensed ...	755	711
Number of persons per shop ...	2,597	2,758
Gross receipts from tree-tax Rs.	4,26,911	4,78,411
Do. rentals ..	3,39,912	4,03,276
<i>Ganja—Bhang.</i>		
Number of retail shops licensed ..	18	17
Quantity sold in seers ...	1,168	1,302
Number of persons per shop ...	108,942	115,350
Gross receipts from duty ... Rs.	8,097	7,807
Do. rentals ..	8,641	12,170
<i>Opium.</i>		
Number of retail shops licensed ...	17	15
Quantity sold in seers ...	724	794
Number of persons per shop ...	115,350	130,730
Gross receipts from duty Rs.	15,178	20,330
Do. rentals ..	12,896	14,524

NOTE.—The territorial limits of the district were revised with effect from 1st April 1911.

## XXI.—Revenue Receipts.

	1911-1912.	1912-1913.
	RS.	RS.
Land Revenue ... ..	27,40,130	28,30,717
Stamps ... ..	3,36,050	3,60,917
Excise ... ..	17,43,659	20,22,980
Income-tax, including penalties ...	75,318	84,098
Forests (a) ... ..	3,45,953	4,29,347
Registration (b) ... ..	1,06,223	1,22,185
Opium ... ..	28,074	34,854
Salt (c) ... ..	206	432

(a) The figures are for fiscal years.

(b) The figures are for the calendar years.

(c) The figures shown under Salt are for the Arcot Sub-Division.

NOTE.—The territorial limits of the district were revised on 1st April 1911.







## XXIII.—Income and Expenditure of Local Boards in 1912-13.

(1)	District Board.	Taluk Boards including Unions in them.					Total.
		Tirup-patur.	Tiru-vanna-malai.	Rani-pet.	Chey-yar.	Vellore.	
(1)	(2)	(3)	(4)	(5)	(6)	(7)	(8)
<b>REVENUE AND RECEIPTS.</b>	RS.	RS.	RS.	RS.	RS.	RS.	RS.
Land Revenue—							
House-tax ... ..	...	2,704	1,950	11,450	3,493	9,529	20,128
Rents, etc., of fisheries ... ..	...	1,674	1,188	5,788	3,607	540	12,806
Miscellaneous ... ..	...	18	11	174	23	...	226
Local rates—							
Cess on land ... ..	1,60,433	21,657	22,658	23,254	23,883	15,982	2,18,867
Railway cess ... ..	...	...	...	...	...	...	...
Interest—							
On Government securities, etc.	205	52	0	329	1	179	775
Law and Justice—Courts of Law—							
Fines under Police and other Acts.	...	182	337	502	131	971	2,123
Education—							
School fees ... ..	...	1,054	1,864	480	685	4,433	8,536
Contributions ... ..	1,550	5,139	2,608	7,678	3,233	7,635	27,933
Other receipts ... ..	...	9	1	...	2	30	51
Medical—							
Hospital receipts ... ..	...	...	...	...	23	54	77
Contributions ... ..	10,816	565	169	2,298	175	352	14,375
Other receipts ... ..	71	97	89	603	56	573	1,489
Minor Departments—							
Veterinary, etc., receipts ...	241	...	...	...	...	...	241
Miscellaneous—							
Choultry receipts ... ..	7	432	55	1,205	387	59	2,235
Market and slaughter-house receipts.	...	3,532	1,701	9,007	249	3,111	17,600
Contributions ... ..	...	...	...	4,961	...	...	4,961
Other receipts ... ..	126	121	152	686	259	497	1,841
Railways—							
Net receipts ... ..	...	...	...	...	...	...	...
Civil Works—							
Ferry receipts ... ..	...	...	...	...	...	...	...
Tolls ... ..	28,309	...	...	...	...	...	28,309
Contributions—							
Contribution from Govern-ment.	94,900	10,425	8,520	26,356	2,250	11,635	1,63,176
Other contributions ... ..	11,787	4,541	505	718	1,290	409	19,250
Debt, deposit and advances.	56,816	2,709	2,623	3,618	542	651	66,359
Total Receipts ...	3,14,441	63,911	43,930	1,01,197	40,300	56,609	6,20,448
<b>EXPENDITURE.</b>							
Refunds—							
Land revenue and local rates.	...	...	10	27	23	14	74
Interest—							
On loans, etc. ... ..	...	...	...	...	...	...	...
General administration—							
General establishment of local funds.	2,617	1,156	941	2,434	1,235	1,737	10,120
Other expenditure ... ..	7,307	731	643	677	582	922	10,652
Education—							
Secondary schools ... ..	...	...	...	...	...	2,734	2,734
Elementary schools ... ..	...	9,884	9,646	13,236	7,171	11,906	51,933
Other schools ... ..	186	...	125	...	...	...	311
Other expenditure ... ..	450	...	155	143	...	250	1,007
Medical—							
Hospitals and dispensaries.	7,423	6,089	2,785	5,976	3,263	3,510	29,046
Vaccination ... ..	3,897	473	744	...	...	434	5,548
Plague ... ..	11,979	...	...	...	...	...	11,979
Other epidemics ... ..	...	394	124	267	243	161	1,189
Other expenditure ... ..	3,710	...	...	...	...	...	3,710
Sanitation ... ..	3,730	2,110	1,577	5,802	1,525	5,619	20,363



XXIII.—Income and Expenditure of Local Boards in  
1912-13—*cont.*

—  (1)	District Board.  (2)	Taluk Boards including Unions in them.					Total.  (8)
		Tirup- pattur. (3)	Tiru- vanna- malai. (4)	Rani- pet. (5)	Chey- yar. (6)	Vellore. (7)	
EXPENDITURE— <i>cont.</i>	RS.	RS.	RS.	RS.	RS.	RS.	RS.
Minor departments—							
Public exhibition and fairs.	...	...	...	...	...	...	...
Veterinary and other charges.	2,087	...	...	...	...	...	2,087
Superannuation, etc.—							
Pensions, gratuities, etc. ...	3,810	101	85	181	141	284	4,502
Stationery and Printing—							
Stationery supplied from central stores.	...	...	...	...	...	...	...
Printing work at Govern- ment and private presses.	906	469	193	196	48	276	2,088
Miscellaneous—							
Markets and slaughter- houses.	...	79	42	340	...	36	497
Choultryes ... ..	263	142	108	2,583	40	...	3,076
Lighting ... ..	...	295	314	1,571	483	1,828	4,493
Other expenditure ... ..	167	13	11	59	...	53	303
Civil Works—							
Civil buildings ... ..	664	1,708	5,434	7,561	2,441	3,447	21,285
Communications ... ..	1,17,609	18,343	16,648	28,362	12,301	10,911	2,03,784
Sanitary works and other works of public improve- ments.	7,318	6,389	4,941	17,385	2,483	5,305	43,121
Establishment, tools and plant.	35,970	1,000	1,000	1,731	616	654	40,971
Contributions ... ..	...	...	...	...	...	...	...
Other expenditure ... ..	168	93	66	54	80	77	538
Debt, deposit and advances.	15,625	2,350	1,738	3,360	1,196	1,097	25,436
Total Expenditure ...	2,25,546	52,019	46,430	91,973	33,873	51,354	5,01,197





XXIV.—Income and Expenditure of Municipalities in  
1912-13.

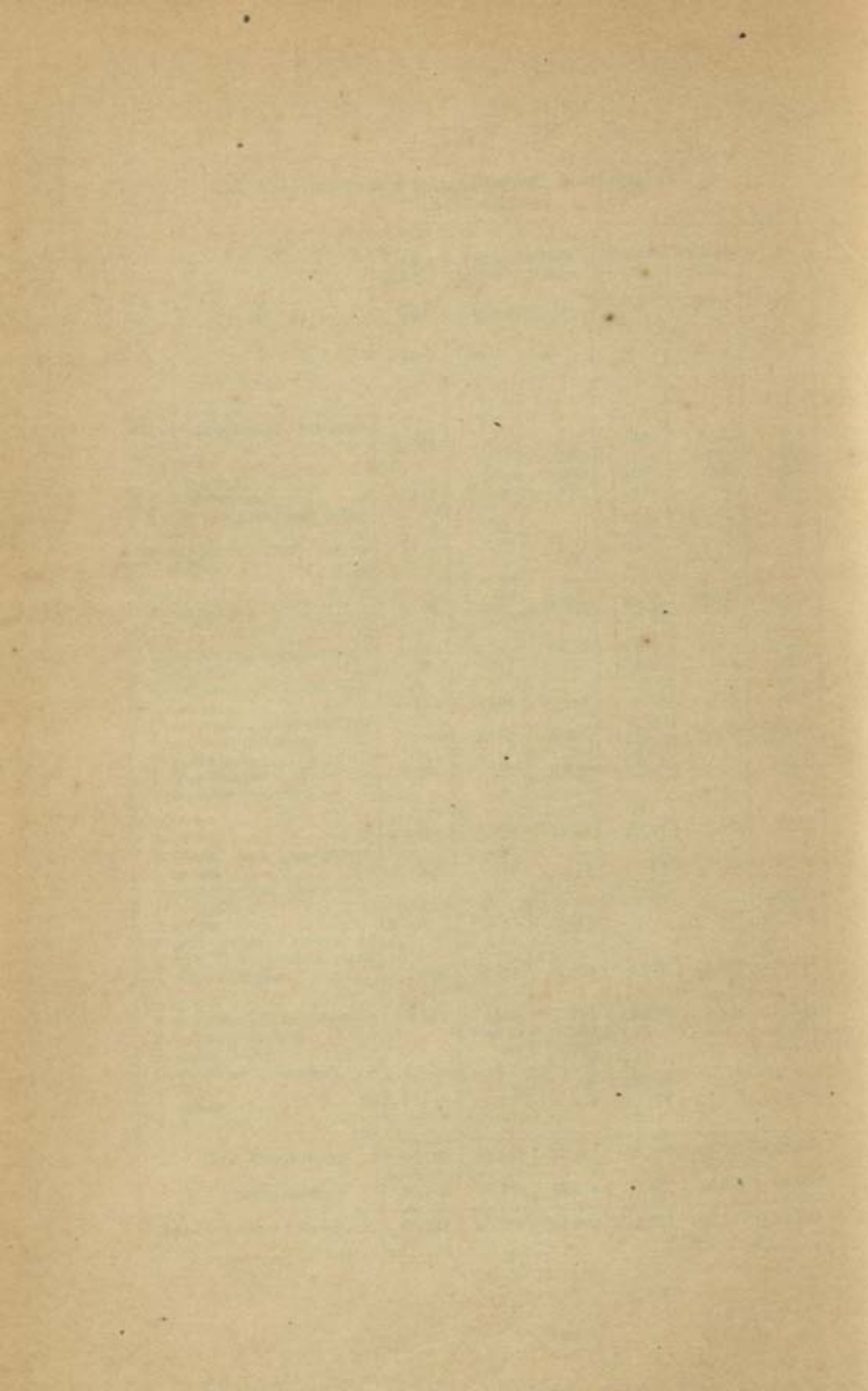
	Tirup- pattūr.	Vāni- yambadi	Gudi- yattam.	Tiruvān- namalai.	Wallaja- pet.	Vellore.
(1)	(2)	(3)	(4)	(5)	(6)	(7)
Opening balance ... ..	Rs. 10,885	Rs. 419	Rs. 3,651	Rs. 34,326	Rs. 7,091	Rs. 10,756
<b>RECEIPTS.</b>						
Tax on buildings and lands ...	8,660	20,240	3,490	6,406	4,086	24,226
Water and drainage tax on buildings and lands ...	...	...	2,646	...	...	16,554
Tax on vehicles with springs, animals and carts ...	1,565	1,629	1,630	2,498	1,331	5,539
Tax on arts ... ..	1,463	1,652	1,790	2,243	1,330	5,691
Tolls ... ..	4,461	4,104	2,573	12,000	2,619	7,276
Tax on private, menial and domestic servants ...	...	...	...	...	...	...
Realizations under special Acts ... ..	113	82	62	14	2	209
Rent of lands, buildings, etc., and sale-proceeds of lands, etc. ... ..	267	562	179	1,057	326	2,643
Conservancy receipts ...	144	40	369	282	762	6,006
Fees and revenue from—						
Educational institutions ...	5,607	214	301	2,258	5,819	2,210
Medical ... ..	100	30	7	...	31	546
Markets and slaughter-houses.	1,707	3,199	3,624	11,580	742	15,214
License fees ... ..	841	926	199	400	398	2,016
Other fees ... ..	137	109	55	843	61	654
Fines under Municipal and other Acts ... ..	231	943	465	537	186	462
Interest on investments and premium on loans ...	...	...	...	...	...	185
Grants and contributions from—						
Government ... ..	25,340	20,673	24,648	34,709	17,285	35,973
Local Boards ... ..	741	807	450	1,000	815	1,300
Other sources ... ..	...	...	...	165	...	...
Recoveries for services rendered to private indi- viduals ... ..	3,834	3,857	467	1,495	523	4,391
Miscellaneous ... ..	648	161	1,072	60	30	736
Sale-proceeds of Government securities and realizations of sinking funds ...	...	...	...	...	...	...
Loans ... ..	...	7,000	...	...	...	...
Advances recovered ... ..	18	98	6,122	1,950	156	658
<b>Total Receipts</b>	<b>55,907</b>	<b>66,216</b>	<b>50,149</b>	<b>79,107</b>	<b>36,502</b>	<b>1,32,889</b>
<b>Total including balance ...</b>	<b>66,792</b>	<b>66,635</b>	<b>53,800</b>	<b>1,13,833</b>	<b>43,593</b>	<b>1,43,645</b>
<b>EXPENDITURE.</b>						
<b>GRANT 1—</b>						
Communications ... ..	2,252	3,351	815	10,557	1,022	5,611
Buildings ... ..	2,108	3,382	1,589	11,563	2,056	4,292



XXIV.--Income and Expenditure of Municipalities in  
1912-13—cont.

	Tirup- pattūr.	Vani- yambadi.	Godi- yattam.	Tiruvan- namalai.	Wallaja- pet.	Vellore.
(1)	(2)	(3)	(4)	(5)	(6)	(7)
EXPENDITURE—cont.	RS.	RS.	RS.	RS.	RS.	RS.
Grant 1—cont.						
Miscellaneous public improve- ments ... ..	2,421	...	...	460	...	522
Drainage ... ..	...	...	190	...	1,494	1,504
Water-supply ... ..	...	219	8,353	4,000	352	5,477
Establishment ... ..	141	448	499	409	182	797
Tools and plant and other stores ... ..	15	54	...	464	28	66
Contributions for public works ... ..	...	...	150	...	...	750
Grant 2—						
Education ... ..	9,730	2,940	3,666	3,418	7,656	9,838
Grant 3—						
Hospitals and dispensaries.	3,838	2,583	2,069	3,585	1,783	9,228
Vaccination ... ..	182	112	141	262	143	523
Registration of births and deaths ... ..	154	104	146	132	172	590
Conservancy, road-cleaning and road-watering ...	7,362	7,730	4,976	14,027	3,860	28,824
Contributions ... ..	255	...	10	127	...	50
Plague charges ... ..	2,508	3,777	3,929	...	...	3,034
Veterinary charges... ..	...	...	...	...	...	120
Grant 4—						
Lighting ... ..	1,282	1,471	1,351	4,934	784	5,157
Markets and slaughter- houses ... ..	229	179	154	13	72	1,458
Choultries and travellers' bungalows ... ..	...	...	...	85	...	4,777
Avenues ... ..	...	...	83	...	88	143
Public garden, survey of land, fire, pounds and other charges ... ..	1,448	3,187	1,006	4,273	3,972	3,097
Grant 5—						
Supervision and management	2,141	2,896	1,950	2,345	1,802	8,141
Repayment of debt ...	...	8,549	1,559	...	...	7,711
Interest on debt ... ..	...	66	1,201	...	...	6,177
Discount on investment ...	...	...	...	...	...	...
Advances ... ..	...	5	40	2,250	1,550	...
Refunds ... ..	23	...	4	22	...	50
Investments ... ..	...	...	...	...	...	...
Total Expenditure ...	36,089	41,053	33,881	63,266	27,016	1,07,946
Closing balance ...	30,703	25,582	19,919	50,467	16,578	35,699
Total including balance ...	66,792	66,635	53,800	1,13,833	43,594	1,43,645





## XXV.—Education in 1911.

Taluka.	Number of literates.		Literates per thousand of population.		Literates in English.	
	Males.	Females.	Males.	Females.	Males.	Females.
(1)	(2)	(3)	(4)	(5)	(6)	(7)
<b>TIRUPPATTUR DIVISION.</b>						
Tiruppattur ..	11,132	795	110	7	999	153
Gudiyattam ...	11,959	588	118	6	699	30
Kangundi ...	2,183	78	64	2	169	1
<b>TIRUVANNAMALAI DIVISION.</b>						
Tiruvannamalai ..	19,634	698	137	5	505	20
Polur ...	8,873	289	106	3	253	9
<b>ERANIPET DIVISION.</b>						
Walajahpet ...	17,668	1,412	166	13	1,171	102
Arkonam ...	11,931	757	145	9	966	155
<b>CHEYGAR DIVISION.</b>						
Cheygar ...	10,277	366	139	5	196	2
Wandiwash ...	9,519	217	117	3	149	4
<b>VELLORE DIVISION.</b>						
Vellore ...	20,890	2,125	187	19	2,160	174
Arni ...	7,481	443	140	8	379	19
<b>District Total ...</b>	<b>131,077</b>	<b>7,768</b>	<b>135</b>	<b>8</b>	<b>7,646</b>	<b>669</b>
<b>Hindus ...</b>	<b>113,090</b>	<b>5,221</b>	<b>127</b>	<b>6</b>	<b>5,907</b>	<b>51</b>
<b>Musalmanas ...</b>	<b>14,148</b>	<b>1,347</b>	<b>250</b>	<b>22</b>	<b>654</b>	<b>7</b>
<b>Christians ...</b>	<b>2,172</b>	<b>1,183</b>	<b>134</b>	<b>71</b>	<b>1,064</b>	<b>608</b>
<b>Others ...</b>	<b>1,667</b>	<b>17</b>	<b>378</b>	<b>4</b>	<b>21</b>	<b>3</b>



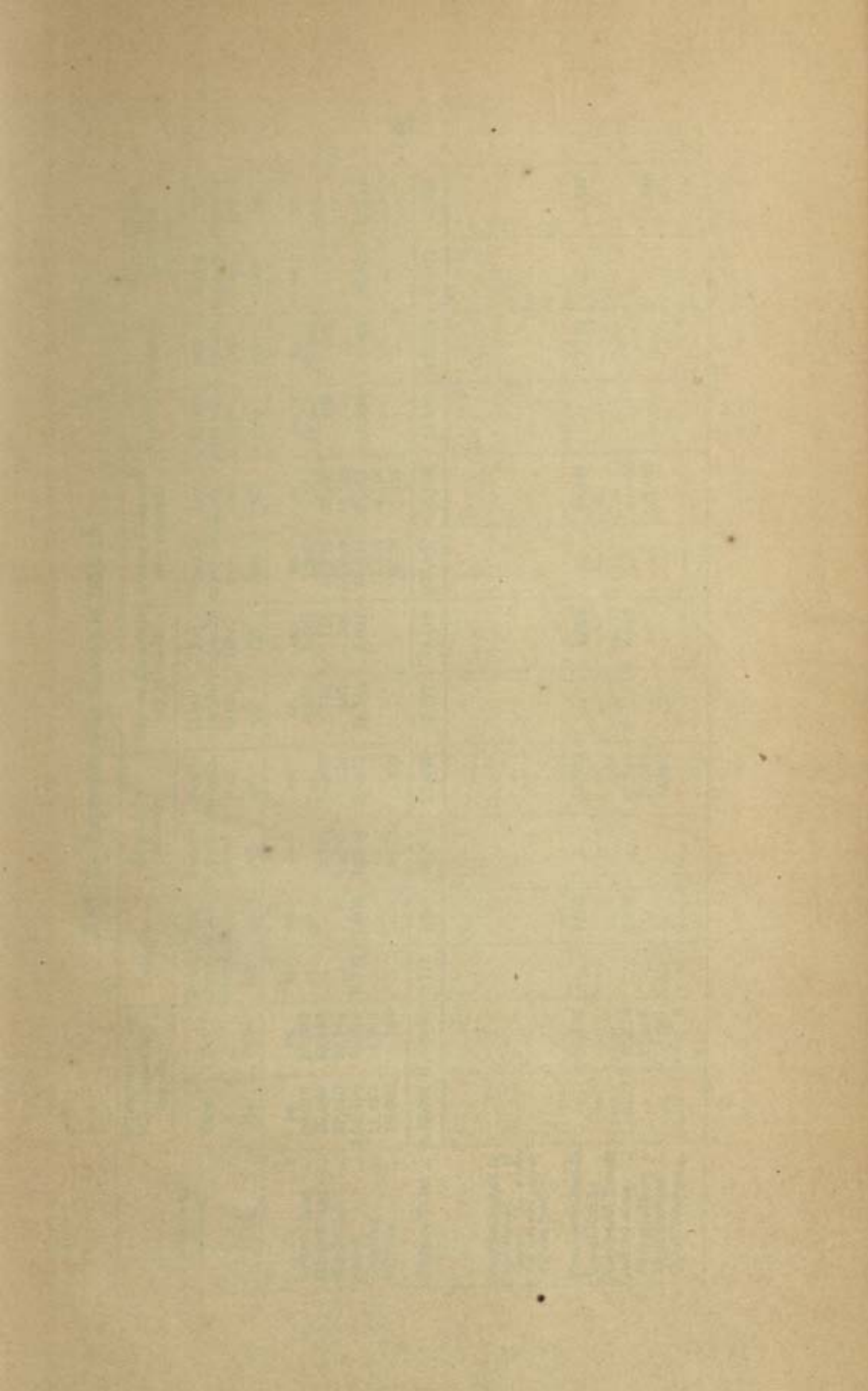
## XXVI.—Schools and Scholars on the 31st March 1913.

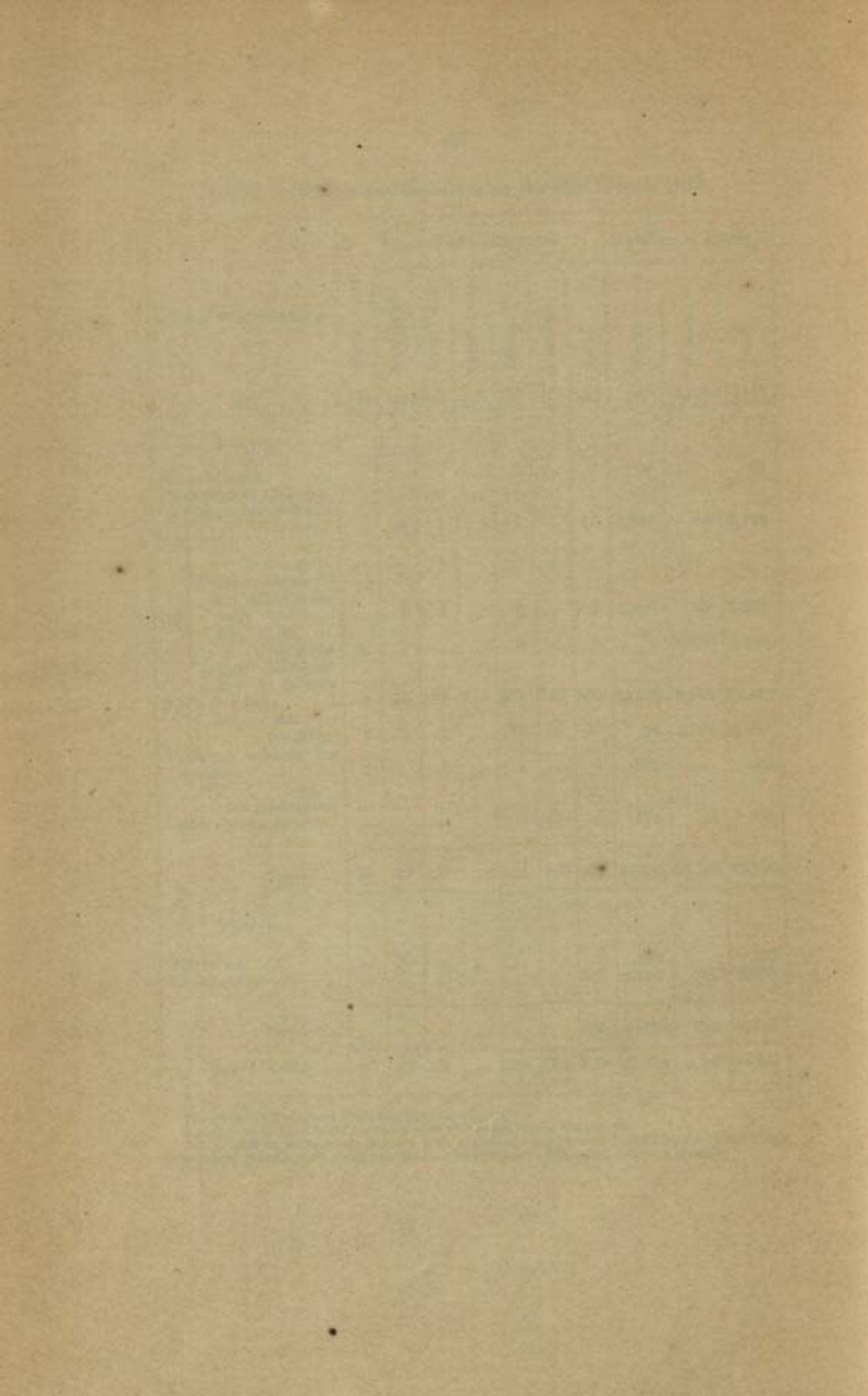
Classes of institutions.	Number of institutions.							Number of scholars.		
	Government	Municipal.	Local Fund.	Native States.	Aided.	Unaided.	Total.	Males.	Females.	Total.
(1)	(2)	(3)	(4)	(5)	(6)	(7)	(8)	(9)	(10)	(11)
<b>PUBLIC.</b>										
Arts Colleges ...	...	...	...	...	1	...	1	61	...	61
Professional Colleges. ...	...	...	...	...	...	...	...	...	...	...
(a) { Secondary schools for boys. ...	...	3	1	...	7	...	11	2,657	63	2,720
Do. do. for girls. ...	...	...	...	...	...	...	...	...	...	...
(b) { Higher Elementary schools for boys ...	...	1	1	...	6	...	8	1,266	89	1,355
Do. do. for girls. ...	6	...	...	...	2	...	8	2	1,262	1,264
(c) { Lower Elementary schools for boys ...	1	35	167	...	481	182	866	35,336	3,151	38,487
Do. do. for girls. ...	2	3	6	...	23	3	37	24	2,761	2,785
Training schools for masters ...	1	...	2	...	1	...	4	162	...	162
Do. do. for mistresses. ...	...	...	...	...	3	...	3	124	39	163
Other special schools. ...	...	...	...	...	...	...	...	...	...	...
Total ...	10	42	177	...	524	185	938	30,632	7,365	46,997
<b>PRIVATE.</b>										
Advanced ...	...	...	...	...	...	...	6	236	...	236
Elementary ...	...	...	...	...	...	...	230	5,826	782	6,608
Total ...	...	...	...	...	...	...	236	6,062	782	6,844
Grand Total ...	10	42	177	...	524	185	1,174	45,694	8,147	53,841

(a) Includes European High and Middle schools.

(b) Relates to Elementary schools with standards above the fourth.

(c) Relates to Elementary schools with standards up to and including the fourth and Elementary schools with standards below the fourth and European Primary schools.





## XXVII.—Expenditure on Schools in 1912-13.

Nature of schools.	Expenditure on all classes of schools.		Colleges.		Secondary schools.		Higher Elementary schools.		Lower Elementary schools.		Training schools.		Technical and Industrial schools.	
	Total.	Net.	Total expenditure.	Net expenditure.	Total expenditure.	Net expenditure.	Total expenditure.	Net expenditure.	Total expenditure.	Net expenditure.	Total expenditure.	Net expenditure.	Total expenditure.	Net expenditure.
(1)	(2)	(3)	(4)	(5)	(6)	(7)	(8)	(9)	(10)	(11)	(12)	(13)	(14)	(15)
Government ...	Rs. 20,918	Rs. 20,322	Rs. ...	Rs. ...	Rs. ...	Rs. ...	Rs. 8,403	Rs. 8,062	Rs. 1,822	Rs. 1,570	Rs. 10,663	Rs. 10,690	Rs. ...	Rs. ...
Local Board ...	55,580	46,552	...	...	2,731	...	776	711	51,157	45,387	916	916	...	...
Municipal ...	37,010	20,244	...	...	14,749	1,116	367	305	21,904	18,823	...	...	...	...
Aided ...	2,01,499	61,249	6,771	1,304	72,544	10,343	12,341	5,041	80,644	28,857	5,122	962	24,077	16,742
Unaided ...	11,354	5,733	...	...	...	...	...	...	11,354	5,733	...	...	...	...
Private ...	16,960	746	...	...	9,974	460	...	...	6,986	296	...	...	...	...
District Total ...	3,43,021	1,54,846	6,771	1,304	99,698	11,447	21,877	14,119	1,73,867	98,666	16,731	12,568	24,077	16,742
Receipts (taken in abatement of charges in working out net expenditure) from--														
Provincial Funds	...	65,102	...	1,600	...	14,603	...	2,831	...	38,421	...	4,180	...	3,487
Local Funds	...	...	...	...	...	...	...	...	...	...	...	...	...	...
Municipal Funds	...	...	...	...	...	...	...	...	...	...	...	...	...	...
School Fees ...	...	90,714	...	3,867	...	47,720	...	4,927	...	34,200	...	...	...	...
Subscriptions ...	...	28,155	...	...	...	21,727	...	...	...	2,080	...	...	...	...
Endowments ...	...	4,201	...	...	...	4,201	...	...	...	...	...	...	...	3,848
Other sources ...	...	3	...	...	...	...	...	...	...	...	...	3	...	...









## XXIX. - Vaccination.

Taluk and Municipalities.	Number of persons successfully vaccinated.			Registered birth-rate per 1,000 of population in.			Average number of successful cases of vaccination on children under one year during the three years ending 1912-13.
	1910-11.	1911-12.	1912-13.	1910.	1911.	1912.	
(1)	(2)	(3)	(4)	(5)	(6)	(7)	(8)
<b>TIRUPPATTUR DIVISION.</b>							
Tiruppattur ...	...	4,943	6,195	...	23	28	2,006
Gudiyattam ...	5,227	6,056	5,312	...	28	28	3,700
Kangundi ...	...	1,659	1,819	...	24	25	759
<b>TIRUVANNAMALAI DIVISION.</b>							
Tiruvannamalai ...	...	6,530	6,863	...	26	29	2,135
Polar ...	3,900	4,835	4,737	...	32	34	1,901
<b>RANIPET DIVISION.</b>							
Walajahpet ...	5,338	5,488	4,759	...	21	27	2,799
Arkonam ...	3,654	4,109	3,632	..	25	33	2,238
<b>CHEYGAR DIVISION.</b>							
Cheygar ...	2,134	3,770	3,446	...	26	38	1,616
Wandiwash ...	6,360	5,153	4,295	...	30	36	2,439
<b>VELLORE DIVISION.</b>							
Vellore ...	4,475	5,864	4,748	...	22	25	3,245
Arni ...	...	3,714	3,898	...	31	36	1,202
<b>MUNICIPALITIES.</b>							
Gudiyattam ...	874	798	492	...	32	25	529
Tiruppattur ...	614	504	529	...	50	59	297
Tiruvannamalai ...	719	730	791	..	39	35	588
Vaniyambadi ...	924	721	430	...	34	29	86
Vellore ...	1,933	1,718	1,836	...	36	41	1,356
Walajahpet ...	445	461	415	...	42	37	47
Total ...	36,597	57,053	54,197	...	27	32	26,943

OTE.—The territorial limits of the district were revised on 1st April 1911.



## XXX.—Civil Justice.

(Average of the statistics for the ten years 1903—12.)

Class of Courts.	Number of all original suits disposed of.	Average value of suits of which value was estimable in money.	Number of appealable decrees passed in disposed of cases.	Appeals preferred.	Appeals decided.	Decisions confirmed.	Percentage of decisions confirmed to total disposals.
Village Courts* ... ..	2,398	Rs. †	...	...	...	...	...
Revenue Courts* ... ..	231	24	219	73	85	71	84
District Munsifs' Courts ...	4,423	184	4,800	174	168	117	69
Subordinate Judge's Court ...	30	21,127	17	3	2	2	100
District Judge's Court ...	25	33,870	23	20	†	†	†

\* Average of the years 1911 and 1912.

† Information not available.

‡ No figures available for columns 6 to 8.





## XXXI.—Criminal Justice.

(Number of persons convicted of certain offences in the years 1911-12.)

Offence.	1911	1912
Murder ... ..	...	...
Culpable homicide ... ..	...	...
Hurts and assaults ... ..	391	366
Other offences against the person ... ..	25	30
Dacoity ... ..	...	...
Robbery ... ..	24	21
House-breaking ... ..	43	53
Cattle theft ... ..	39	51
Other theft ... ..	389	448
Other offences against property ... ..	245	213
Offences against public tranquillity (Chapter VIII) ... ..	258	237
Other offences against the Penal Code ... ..	705	695
Total ...	2,119	2,114
Security for keeping the peace and for good behaviour ...	83	71
Offences under Madras Salt Act (IV of 1889) ... ..	...	...
Offences under Madras Abkūri Act (I of 1886) ... ..	459	606
Offences under Madras Forest Act (V of 1882) ... ..	638	998
Offences under Madras District Municipalities Act (IV of 1884) ... ..	410	412
Other offences against special and local laws ... ..	3,975	4,569
Grand Total ...	7,684	8,770

NOTE.—The district was formed only on 1st April 1911.

## XXXII.—Work of Criminal Courts.

(Average of the statistics for the years 1911-12.)

Class of Courts.	Number of original cases instituted.	Number of appeals received.
Village Magistrates ... ..	745	...
Bench " ... ..	2,241	...
Special " ... ..	459	...
Stipendiary Subordinate Magistrates ... ..	8,697	...
Deputy, Assistant and Joint Magistrates ... ..	420	268
District Magistrate ... ..	1	18
Court of Sessions ... ..	90	72

NOTE.—The district was formed only on the 1st April 1911.



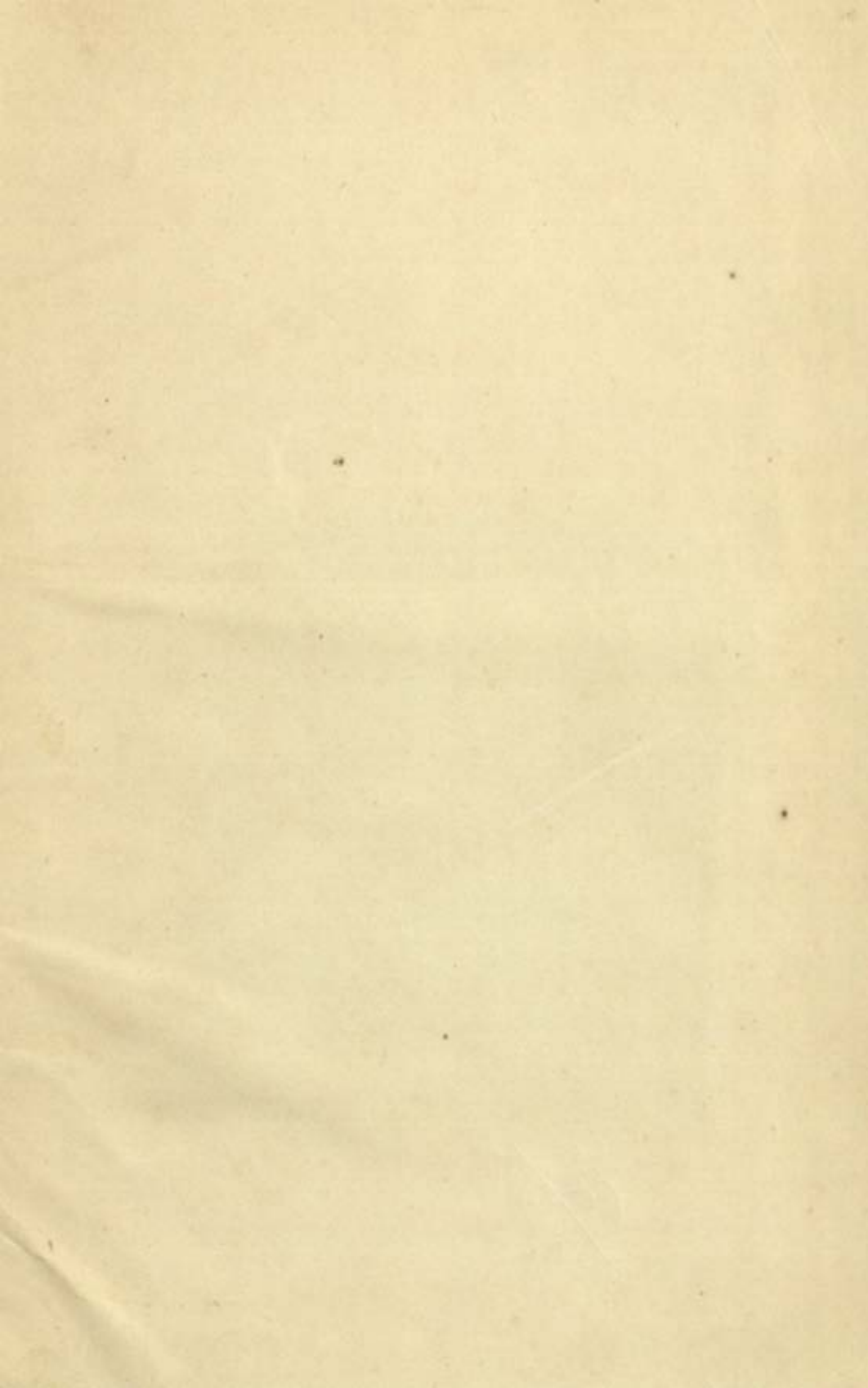
## XXXIII.—Police and Jails in 1912.

Taluk.	Number of Police		Police Force.						Number of known-depredators.	Number of sub-jails.	Total accommodation in them.
	Stations.	Out-posts.	Inspectors	Sub-Inspectors.	Head Constables.	Constables.	Police Talukaries.	Revenue Talukaries.			
(1)	(2)	(3)	(4)	(5)	(6)	(7)	(8)	(9)	(10)	(11)	(12)
CHEYGAR DIVISION.											
Wandiwash ...	5	2	1	6	16	104	...	174	60	1	16
Cheygar ...								184		1	20
RANIPET DIVISION.											
Walajahpet ...	7	2	1	8	22	134	4	198	78	1	20
Arkonam ...								182		1	18
TIRUPATTUR DIVISION.											
Tirupattur ...	8	2	1	10	29	160	...	95	161	2	48
Kangundi Zamin-dari.										1	16
TIRUPATTUR AND VELLORE DIVISIONS.											
Gudiyattam ...	5	1	1	6	17	108	15	222	51	1	27
Vellore ...										1	16
TIRUVANNAMALAI DIVISION.											
Tiruvannamalai ...	13	...	1	5	17	110	21	183	69	2	48
TIRUVANNAMALAI AND VELLORE DIVISIONS.											
Arni ...	5	1	1	5	13	94	...	161	44	1	15
Polur ...										1	16
VELLORE DIVISION.											
Vellore ...	2	1	1	3	11	88	4	177	35	1	34
Total ...	45	9	7	43	125	798	44	1,576	498	14	294

NOTE.—Particulars for each taluk are reported to be not available separately.









S. Cab  
21/3/77

*"A book that is shut is but a block"*

CENTRAL ARCHAEOLOGICAL LIBRARY

GOVT. OF INDIA  
Department of Archaeology  
NEW DELHI.

Please help us to keep the book  
clean and moving.

S. B. 148. N. DELHI.

See Vol. 7