

GOVERNMENT OF INDIA
ARCHAEOLOGICAL SURVEY OF INDIA

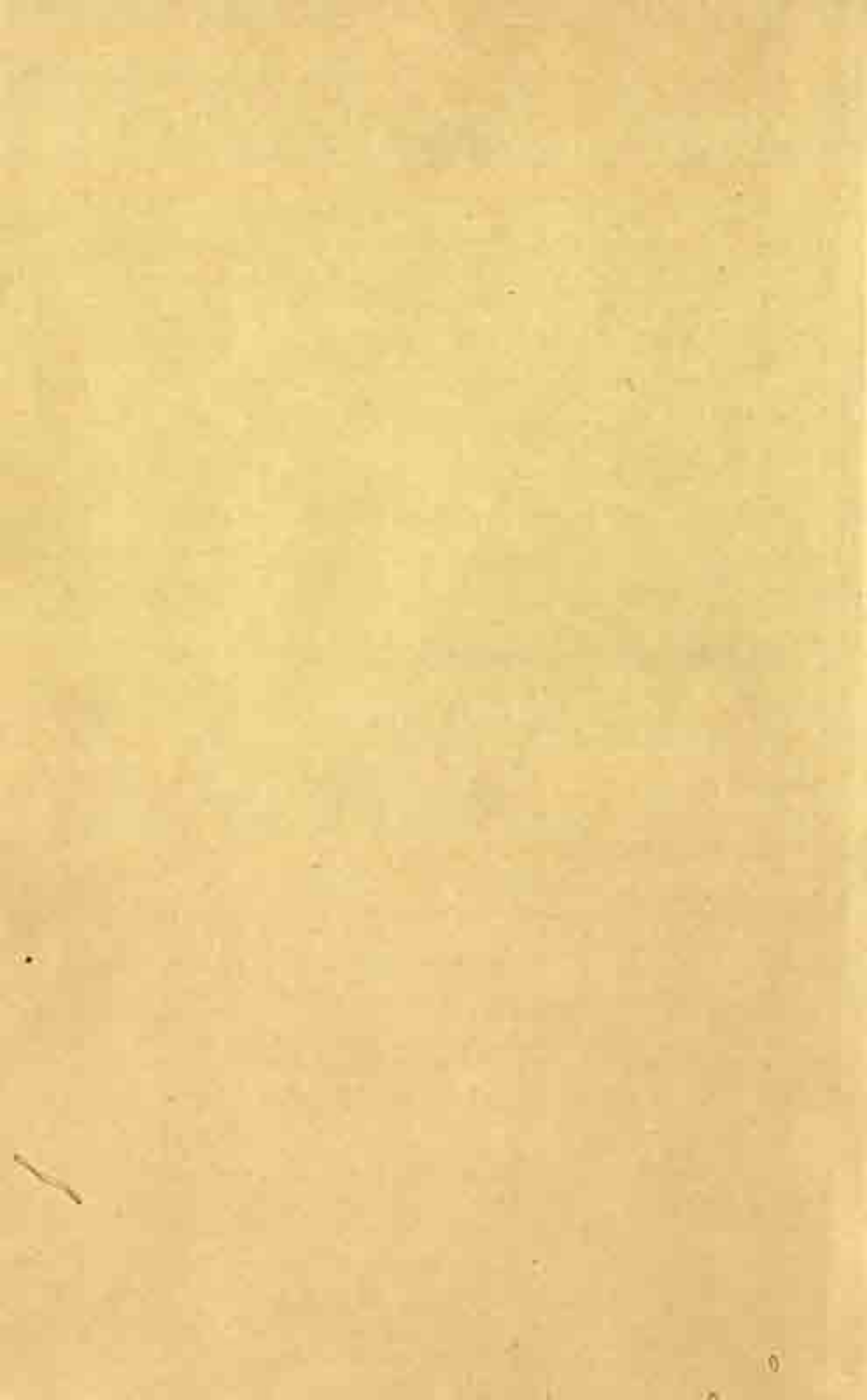
CENTRAL
ARCHAEOLOGICAL
LIBRARY

ACCESSION NO 36454

CALL No. 069.53095435
S M B

D.G.A. 79





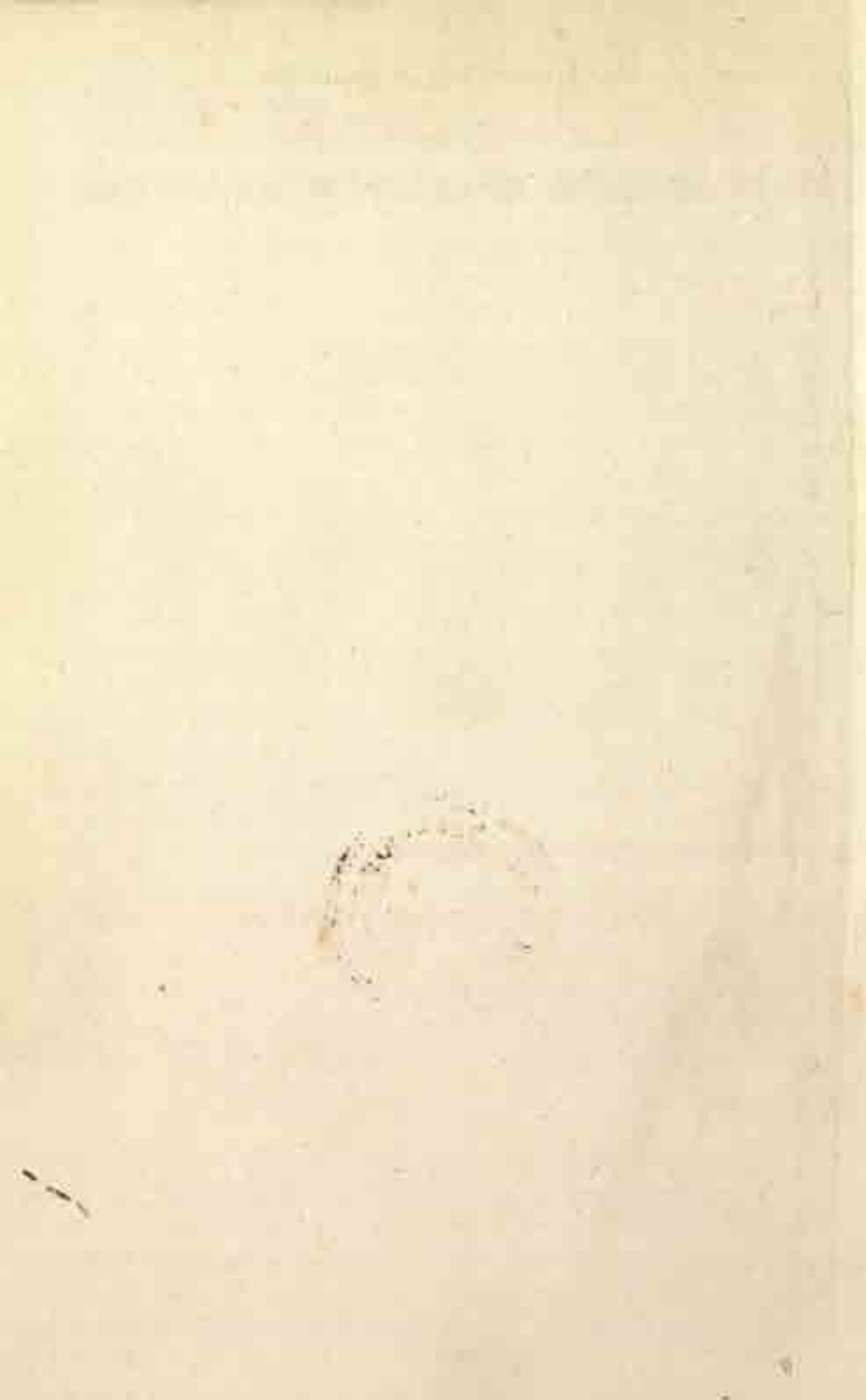
36454

CATALOGUE & GUIDE

262

To

STATE MUSEUM, BHARATPUR (RAJASTHAN)



CATALOGUE & GUIDE

To

STATE MUSEUM, BHARATPUR (RAJASTHAN)

36454



069.53095435

S.M.B.



1960-61

Published by

DEPARTMENT OF ARCHAEOLOGY & MUSEUMS,
GOVERNMENT OF RAJASTHAN, JAIPUR

Museum Timings :

Summer 7-30 to 10-30 a.m. 3-30 to 6-00 p.m.

Winter 10 a.m. to 4-30 p.m.

Closed on Fridays & Gazetted Holidays.

1st Edition : 1961

1000 Copies

CENTRAL ARCHAEOLOGICAL
LIBRARY, NEW DELHI.

Acc. No. 36454.....

Date 16-11-62.....

Call No. 069.53095435.....

S. M. B.

CONTENTS

	Pages
Frontispiece	vi
Introduction — Guide	1 — 8
Archaeology Section	9 — 44
Armoury Section	45 — 70
Arts, Crafts & Industry Section	71 — 79
Children Section	80 — 88
Miscellaneous Section	89 — 94
Illustrations	Plates I — XII



Krishna with his consort. Late 19th century; Jaipur.

INTRODUCTION

Bharatpur has occupied an important place in the cultural history of Rajasthan. It is one of the ancient regions of the State and formed part of the territory of *Śurasenas* — one of the Sixteen *Mahā-janapadas* of the Pali Literature and closely associated with *Matsyadeśa*. From this region have been discovered not only unique but earliest pieces of plastic art. The sculptural relics, inscriptions, coins etc., collected in this region, will give us a clear glimpse into the glory that was once Bharatpur. These wonderful sculptural relics are legible pictorial scripts through which the masses received education in religious subjects and imbibed the symbolism and the truth of their faith. The craftsman had, therefore, not only to bring out the spirit and mood of the *deity* but symbolise *Him* in action as if He could speak to the worshipper, move him to his depth and give him hope, strength and solace.

An idea arose in the minds of the then authorities of the Bharatpur Government in 1939 to preserve the cultural heritage of the State. The work was started with the collection of sculptures and a few other exhibits, which were on display in a room in the Public Library. These were shifted to the present building of Kachheri Kalan, in the Fort, in A.D. 1944 under the patronage of the present H.H. the Maharaja Sawai Brijendra Singh, who still evinces keen interest in the Museum. Within a short span of sixteen years, it gradually developed into a full-fledged State Museum, under its first Curator, Rawat Shri Chaturbhujdas Chaturvedi. Later on the Kamra Khas Buildings were added to it, which once housed in it the Armoury of the Rulers, which, now, forms a section to the Museum. The following are the sections of this Museum :

1. Archaeology
2. Armoury
3. Arts, Crafts & Industry
4. Children
5. Miscellaneous.

1. **ARCHAEOLOGY** Section is the most important and is being re-organized with the subsidy of the Government of India. Wooden pedestals have been provided to the sculptures. This has given a better show besides giving facilities for their display anywhere without any dislocation. Attempts have also been made to display a particular piece at its place, e.g., door lintel with jamb and the sill of early mediaeval period have been so set as to form the *Doorway* of a Shrine (No. 78, Pl. I). The marble Parikar (canopy) of some Jaina Tirthaṅkara (No. 79) with inscription of Samvat 1679 (A.D. 1622) of the time of Mughal Emperor Jahāngīr, has also been displayed likewise. The exhibits in the Catalogue have been briefly described with type of material, size, period, register number, and the year of acquisition.

In this section are some of the ancient, rare and unique collections from Noh, Mallah, Bareh, Bayana etc. etc. These clearly prove that the history of the region may be pushed back a few centuries before the Christian era, if not even earlier. These sculptures range in date from the Mauryan period down to the 19th century A.D. in chronological sequence and represent almost all the Hindu gods and goddesses and Jaina Tirthaṅkaras. A single specimen of Bodhisattva Maitreya (No. 6, P. II) of the Kushāṇa period also shows Buddhist influence in this region. Other interesting pieces are Standing Human Figure (Raja ?) with seal in left hand (No. 1, Pl. III), Kubera (No. 3), 60 inches high Ekmukhi Śiva-*lingam* (No. 4, Pl. IV), Seated Dwarfish Figure (Kumbha Rishi ?) (No. 5, Pl. V), Navagraha Panel (No. 8) preceded by Śiva *lingam*, Sarvatobhadra Ādinātha (No. 12), Marriage

Scene of Umā-Maheśa (No. 17), Śiva and Bhairava (No. 18), Dancing Śiva and Chāmūṇḍā (Nos. 22 & 23), Huge Panel depicting the Ten Incarnations of Viṣṇu (No. 43), Colossal Image of Pārśvanātha (No. 66), with inscription of Samvat 1077 (A.D. 1020), Bust of Viṣṇu (No. 70), Mahishāsura-mardini (No. 158)—and Panel depicting typical Rajasthan Love Scene of Dholā-Mārū (No. 87). In epigraphy, mention may be made of a Persian inscription (No. 165) from Bayana of the time of Mughal Emperor Bābar wherein his son Kāmraṇ has been shown Governor of the region in 1526 A.D. In Numismatic, the ten Gupta gold coins of the famous Bayana Hoard deserve notice. These include coins of Samudragupta, Chandragupta II and Kumāragupta I. The Lion-slayer type coin (No. 298, Pl. VI) of Chandragupta II is very important and interesting.

Besides, the collection in the Museum, mention may also be made of the colossal 7 ft. high *yaksha* at Noh, similar to the one now preserved in the Curzon Museum of Archaeology at Mathura (U.P.) from Parkham, of the Kushāṇa period. The cult of these *yaksha* and *yakshi*, noticeable as the earliest specimen of Indian plastic art, was indigenous, in origin, with these non-Aryan deities or Genii. These were supposed to be endowed with powers of wealth and fertility which they could confer on the devotee. The typical Gupta period art depiction in the colossal 27 ft. long rock-cut images of Baldeoji, his consort Reoti, Lakshmi-Nārāyaṇa and Pāṇḍava hero Yudhisṭhira with Viṣṇu and other devotees sustaining on his head, are outstanding work of plastic art at Roopbas, a place about 25 miles distance from Bharatpur by direct route. This place is now being connected by a pacca road.

Recently a hoard of Jaina sculptures has been noticed at village Dahina in the bed of river Gambhir. It appears there were Jaina shrines, which were totally raised to the ground by the iconoclasts and not a single Jaina family

now resides in the village. There are a large number of ancient mounds which await exploration.

2. ARMOURY Section — The rulers held their weapons in high esteem in days gone-by. It was with them that they had won their possessions and it was with them they held them. A living example of this may be seen in the collection and storage of arms in the private apartments, where they used to reside and did business.

Here, one finds displayed all kinds of weapons used in battles of old days. These include Swords, Daggers, Guns, Match-locks, Revolvers, Lance, Bow and Arrow, Canons etc. Swords are of different kinds having various types of Hilts (Pl. VII). These are made of steel and have been termed as of 'Faulad', 'Sakela', 'Ispat' and have fine work on their hilts in gold and silver according to the choice of the user. This work is called 'Koft', 'Zar Nishan', 'Tah-nishan' etc. Mention may be made of the sword (No. 324) the blade of which, on one side, is of Faulad and on the other of Sakela, the former is strong in action and the latter non-breakable. Other noteworthy swords are *Zulfikar* (No. 330) of Sakela — having two pangs on end to catch hold of enemy's sword thus rendering him inactive, *Una* of Faulad (No. 340), *Khurasani* (No. 343), *Zafar-Tagia* (No. 688), which can be kept under Pillow and used in emergency, *Katti* (No. 352), and *Kirch* (No. 436) of Ispat. Amongst the Daggers are *Peshqabz* of Faulad and Sakela (No. 441), *Chhuri* (No. 444) with inside another *Chhuri*, *Chhuri* (No. 504) with jade horse-head handle, *Khukhri* (No. 445) and *Katar* (No. 446).

The Guns (*Banduq*) are of several types, e.g., *Topidar*, *Toridar*, *Pathridar*, *Kartusi*, *Eknali*, *Donali*, *Char-fer*, *Chhe-fer* (four and six rounds), *Ramchangi* (No. 724) 10 ft. long, *Sher Bachcha* (No. 684, Pl. VIII); gun *Toridar Desi* (No. 714) with gold *Koft* work; gun fitted with empty brass ball for air used in killing birds (No. 710). Foreign and country made revolvers are of four to eight rounds,

one of these has automatic system of bullet and lance (No. 677). Cannons include *Chaddars* (miniatures) two sets of eleven each (No. 768-69) and are of historical importance and are easy to be handled and forceful in action. Lance (No. 771), *Gupti Banduq* (No. 780), *Jagnol*, *Bhujali*, *Farsa*, *Gurj*, *Bagh Panja* are other types of weapons used in face to face combat. The *Bagh Panja* (No. 839) is a typical weapon said to have been used by Marahatta Sardar Shivaji in killing Afzal Khan in the open court of Aurangzeb. Bows and arrows are few. Shields (*Dhal*) of leather and steel, of which No. 818 is interesting inasmuch as it can be used both for defence and offence as four revolvers are fitted in it. Armours of iron rings (No. 852) are also interesting.

3. ARTS, CRAFTS & INDUSTRY Section has been so arranged as to give a comparative idea of exhibits manufactured in Bharatpur region, in Rajasthan, in India and foreign lands. These have been represented by Exhibits of Earthenware, Pottery, Glass, Wood, and stone. Those deserving special notice are Sandlewood and Ivory FLY-WHISKS (No. 854-56), HAND FANS (No. 865-66, Pl. IX); the art of weaving in stiff material like wood and ivory is a remarkable performance of the artist of Bharatpur; ANTIMONY BOX (Shringardan and Itradan) having ivory inlaid and overlaid works; embroidered cotton SKIRT (No. 877) worn by the ladies of a Muslim agricultural caste called *Meo*, earthenware, pottery and metal utensils for domestic purposes, include vases and goblets having fine gold floral work on lacquer from Bikaner; incised and embossed works on brass utensils from Jaipur, gold floral both overlaid and inlaid work on marble trays, vases from Agra and some pottery and glass FLOWER POTS of foreign make are also interesting.

4. CHILDREN Section has been organized to impart general knowledge to children besides affording them entertainment. In this Gallery have been displayed TOYS made

of Sandlewood, Ivory, Paper-machié, Brass, Stone ; VEGETABLE AND FRUITS ; a few specimen of zoology, e.g., 96 inches long Crocodile (No. 1345), stuffed LION'S CUB (No. 1350), BOAR BABIES (No. 1356-57), VAN MANUSH (No. 1360), WOLF (No. 1359), African MONKEY (No. 1358), EGGS (No. 1400-3) of different types of Birds, Tea-poy and Box (No. 1357) in Elephant Leg ; Life Sketches of Bed-Bugs (No. 1406), Frogs (No. 1407), Mosquitoe (No. 1408) ; Physiology Charts including Map of Mankind (No. 1421-22) ; Collection of Postage Stamps (No. 1413-14) ; Model of a CHARIOT (No. 864, Pl. X) drawn by two bullocks made of sandlewood and Musical Instrument — *Jaltarang* are worthy of notice. A view of 'Progress of Light' has been arranged from an earthenware lamp, kerosene oil lantern, gas lamp and the present-day electricity.

This section ends with an exhibit called *GTAN CHAWSAR* (No. 1198). This belongs to Vikrama Samvat 1667 (A.D. 1610) and depicts such an early art of embroidery in silk. This is interesting inasmuch as that it denotes the results of good and bad deeds of a person. By good deeds one can reach the abodes of Brahmā, Vishṇu, and Mahesha by means of ladders and by bad deeds one goes down to Hell by falling into the mouths of snakes. The game of snake and ladder is probably the outcome of the above representation.

5. MISCELLANEOUS Section begins with the display of PAINTINGS belonging to the Mughal School of the 17th century A.D., and of the different schools of Rajasthan, e.g., Jaipur, Jodhpur, Kotah, Kishangarh, Udaipur, Nathdwara, Bundi and Bharatpur. The Bharatpur Paintings are of the late 18th century A.D. and depict Kṛishṇa-Līlā scenes and some of the incarnations of Vishṇu (No. 1449-68 Pls. XI & XII) ; others include Paintings on *Pipal* leaves (No. 1470-78) and on mica (No. 1549-76). There are nine hand-written Mss., earliest amongst them is *SAHAJ SANEHI* (No. 1579) of Samvat 1667 (A.D. 1610).

Portraits of the Rulers (No. 1433-47), State Coat of Arms, State Flags, Brass & Copper Revenue Stamp Blocks of Bharatpur and Dholpur States (No. 1616-17), Dynastic sketch of the Bharatpur Rulers (No. 1610) have been displayed in the Miscellaneous Section. The model of Girraj-ji's Temple at Goverdhana (No. 1321) is also interesting.

The covenanting State of Bharatpur is a *JAT* principality. The Jats are a branch of the great Goetic race. Though reduced from the rank they once had amongst the "Thirty-six Royal Races" they appear never to have renounced the *Love of Independence*. The name of *Cincinnatus* of the Jats who abandoned his plough to lead his countrymen against their tyrants was *CHURAMAN* (upto A.D. 1722), who assailed the rear army of the Mughal Emperor Aurangzeb in the closing 17th century A.D., when he was proceeding, on his 30 years war, to Deccan.

Raja Badan Singh (1722-55 A.D.), was the first Chief of the Jats who was installed in the town of Deeg. He was succeeded by his eldest son Maharaja Surajmal (A.D. 1755-63) who made his capital at Bharatpur. Maharaja Surajmal and his son Maharaja Jawahar Singh (A.D. 1763-65) made repeated onslaughts on Agra and Delhi and looted the Mughal treasury. Maharaja Ranjit Singh (A.D. 1777-1805) defeated the British Army and retained independence; and it was in 1826 A.D. that the State was surrendered after heavy loss of lives.

The Museum, housing such a collection, is in the Fort which has several other important places inside it and around it, deserving of special mention. These are *Ashtdhati Door Shutters* of the famous Chittor Fort, *Jawahar Burj* with paintings in the ceiling of a *Baradari* and an Iron Pillar containing the genealogy of the Rulers, Palaces, Hamam and Fountains, *Faujdar Devisingh-ki-Kacheri* & *Zenana* Palaces, *Nargarha* and *Kishori Rani-ka-Mahal*, Temples of *Lala Maharaja*, *Bankey Bihariji*, *Syam Murariji*, *Ganga Mandir*, *Lakshmanji's*

Temple, *Santokhiji's Temple*, *Jama Masjid*. *Sikh Gurdwara* has a history behind it. Maharaja Jawahar Singh engaged six thousand Sikhs to help in the victory over Delhi. On the successful termination of the mission, this *Gurdwara* ground was awarded to the Sikhs. By its side stands the Delhi Gate which was constructed to commemorate his victory. *Phoolwari* or the *PHOONS Bungalow* and *Moti Mahal*, the present palaces of the Maharaja, are worth seeing. The old Palaces at Kumher, Rao Holkar's Chhatri at Gangarsoli, Palaces on Venitian pattern and Fort at Deeg, eighty-four pillared Mosque at Kama or Kamavana, *Phoolwari* Palace and Fort at Weir, Bandh Baraitha and the Gupta period Vijay Mandirgarh Fort, 10th century A.D. Usha Temple and several Muslim monuments at Bayana which are at some distances from Bharatpur, are noteworthy. A word may be said here about the description of exhibits in Armoury Section. The description contained herein conforms literally to the one found entered in old registers which are in Devanāgarī script and in Braj Bhāshā, a local dialect of the region. The description has been retained with a view to maintain chastity in description as given by the local technical expert.

SHIV SARAN LAL
CURATOR

ARCHAEOLOGICAL SECTION—SCULPTURES

1. Standing male figure without head ; wears beaded necklace ; elaborate flowing robes tied up in a front knot.
Red Stone. Size : 4'6" × 2'
Mauryan Period
Bareh
1175/149 1960
2. YAKSHINI, upper fragment only ; face chopped off.
Red Stone badly weather-worn. Size : 2'3" × 1'2"
Late Mauryan Period.
Noh
19 1946
3. YAKSHA; probably *Kubera*; badly defaced; headgear, ear-rings, and necklace deserve special notice ; pot-bellied.
Sandstone. Size : 2'6" × 1'7"
2nd century B.C.
Sogar
41 1947
4. COLOSSAL *LINGAM*—EKMUKHI; headgear unique.
Red stone. Size : 5' in height
Śunga Period.
Aghapur
1131/143 1960
5. DWARFISH FIGURE with moustaches; wears bangles, necklace and peculiar ear-rings; upraised hands holding vase decorated with lotus pattern.
Red stone. Size : 1'6" × 9"
Śunga Period
Aghapur
1132/144 1960
6. BODHISATTVA; four standing in a row in an identical pose; holding water-pot in the left hands

while the right hands raised in *abhaya*; wearing typical headgear and ornaments; well preserved

Red stone. Size : 8" × 9"

Kushāṇa Period

Noh

1071/133

1959

7. **BUDDHA HEAD.** The specimen presents Buddha with undulating line on forehead and a circular knot on head.

Sandstone. Size : 10" × 7"

Kushāṇa Period

78

1947

8. **NAVAGRAHA Panel (The Nine Planets).** A unique panel depicting seated Navagraha figures proceeded by Śiva-*lingam*; presented by Chowdhury Sultan Singh of Sikarrā Kherā Tehsil Bari (Dholpur)

Grey Stone. Size : 2'8" × 4"

2nd century A.D.

Sikarrā Kherā (Dholpur)

1038/132

1958

9. Finely carved standing female in tribhaṅga; fully draped and ornamented; *Dvārapālīkā* ?

Red Stone. Size : 2' × 8" × 1'1"

Gupta Period

82

1944

10. **STANDING BHAIRAVA.** The four-handed figure is nude and has prominent *jaṭāmukuta* and *mundamālā*, holding *khadga* (sword) in right hands whereas the left are broken.

Red stone Size : 2'4" × 1'6"

Gupta Period

38

1944

11. **VISHṆU**, standing image without head; with coiled serpent in background; duly ornamented. Wears *vanamālā*.

Sand stone. Size : 3'6" × 2'

Gupta Period

Bareilly

1176/150

1960

12. **STANDING SARVATOBHADRA IMAGE** (Jaina Quadruple); nude; having matted lock on head chiselled in strict accordance with the principles of *Samavaraṣaṇa* of the Jaina pantheon facing the cardinal directions; an outstanding work of the contemporary Jaina art.

Size : 2'7" high × 8" wide

Sand stone. Gupta Period

Jaghina

64

1949

13. **ĀDINĀTHA**—Bust having curly hairs and elongated ear-lobes.

Grey Stone. Size : 6" × 4"

Gupta Period

Jaghina

7

1945

14. **ŚIVA-LĪNGAM** (*Ekṃukhi*) (Presented by H. H. Sri Sawai Brijendra Singhji Bahadur of Bharatpur) : *Śiva*-head with *jaṭā-makuṭa* emerges out of the *līṅga*, on one side.

Sand stone. Size : 1'10" × 8"

Gupta Period

Bharatpur

88

1947

15. **BUST** of male figure; highly ornamented; peculiar, headdress; two hands appear to hold flute-like object.

Grey Stone. Size : 1' × 9"

Gupta Period

Noh

86

1947

16. **NEMINĀTHA**—seated in meditation, *Padmāsana*-pose with half closed eyes and curls on head; conch

symbol carved on pedestal.

Size : 2'4" × 1'6"

Gupta Period

11

1945

17. ŚIVA-PĀRVATĪ; Marriage scene; standing headless figures.

Sand stone. Size : 2'9" × 2'1"

Gupta Period

Noh

1136/148

1960

18. Standing ŚIVA and BHAIKAVA; Śiva shown with Nandi (bull) while Bhairava holds *khadga* (sword) in right hand; well preserved.

Kankar Stone. Size : 2'6" × 1'6"

Gupta Period

Bawen

1177/151

1960

19. BUST of LADY with unique headdress; having ear ornaments and beaded necklace.

Grey Stone Size : 1'2" × 10"

Noh

1194/168

1960

20. TORSO of male figure; right hand holds a cup on full-blown lotus, attached to breast.

Size : 2'3" × 8"

Gupta Period

Noh

1188/162

1960

21. ŚIVA-NATARĀJA wearing skull garland; couchant Nandi at the bottom.

Rough Red Stone. Size : 4'6" × 2'

Late Gupta Period

Mallah

43

1946

22. CHĀMUNDĀ—One of the Mātrikās on corpse in dancing pose having four arms.
Red Stone rough. Size : 4'6" × 2'
Late Gupta Period
Mallah
16 1946
23. YAMA (God of Death), standing figure with sword in right hand; vehicle buffalo stands behind legs.
Rough Spotted Red Stone. Size : 1'7" × 1'3"
Late Gupta Period
Mallah
83 1947
24. VARUṆA (Lord of Water). Holding noose (*pāśa*) in his right hand and vehicle *makara* sitting behind the legs.
Size : 2'6" × 1'6"
Late Gupta Period
Mallah
35 1946
25. SARASVATĪ (Goddess of Learning) shown squatted between two pillars with her knees upon a double-petalled lotus pedestal; holds a *pustaka* in her left hand.
Sand Stone, red and creamy. Size : 2'7" × 1'3"
Gupta Period
Bayana
969/97 1953
26. INDRA (King of Gods) standing; holds *ankuśa* in right hand and *amritaghata* in the left; vehicle elephant carved in the background with its prominent tusk.
Red Stone. Size : 2'5" × 1'6"
Late Gupta period
25 1946
27. AGNI (Fire God) standing; two-armed figure holding water vase and *akshmālā*; elaborate headdress and beard; flames of fire rising around the head; couchant ram in the right corner.

- Sand Stone. Size : 1'10" × 1'9"
 8th century A.D.
 Mallah
 29 1946
28. THREE-FACED BRAHMĀ — seated between two
 pilasters.
 Size : 2' × 16" × 1'10"
 8th century A.D.
 Bachchenā
 979/102 1953
29. KĀRTIKEYA (Lord of War) standing ; holds staff
 in right hand ; vehicle peacock shown sitting in left
 corner.
 Red Stone. Size : 3' × 1'9"
 8th century A.D.
 Bayana
 977/160 1953
30. GAJA-ŚĀRDULA (Griffin) upraised by Atlante
 figure ; granite spotted.
 Size : 2'4" × 11"
 8th century A.D.
 Mallah
 39 1946
31. GANEŚA (Lord of Wisdom) having six arms seated
 with Riddhi and Siddhi, his two consorts ; duly
 ornamented.
 Sand Stone. Size : 1'10" × 1'6"
 Mediaeval Period
 Shergarh (Dholpur)
 1016/114 1956
32. KUBERA (God of Wealth) ; seated with purse in
 left hand and cup in the right ; presented by Shri
 Haridattaji, Engineer, P.W.D.
 Rough Red Stone. Size : 9" × 6"
 8th century A.D.
 898/92 1949

33. LADY — standing ; two-armed ; having elongated ear-lobes.
Spotted Red Stone. Size : 3'1" × 1' × 10½"
8th Century A.D.
Bayana
978/101 1955
34. LADY — Door-keeper ; standing ; two-armed.
Red Stone. Size : 2'2" × 1'9"
Late Gupta Period
Mallah
14 1945
35. VARUNA DEVA (God of Rain), standing ; two-armed ; wearing sacred thread.
Grey Stone. Size : 2'7" × 1'3"
Late Gupta Period
Mallah
84 1947
36. AINDRI — standing ; two-armed.
Red Stone. Size : 2'9" × 1'3"
Late Gupta Period
Mallah
59 1947
37. YAMA (God of Death) standing ; having staff and parrot in right and left hands respectively ; buffalo sitting on pedestal ; duly ornamented.
Red Stone. Size : 3'6" × 2'3"
Late Gupta Period
Bayana
976/99 1955
38. PILLAR ; ornamented with full-blown lotus ; vase and foliage designs ; presented by H. H. of Bharatpur.
Red Stone. Size : 6'10" × 11"
Late Gupta Period
Nadbai
36 1946

39. BRACKET PIECE, designed with Kichak.
Red Stone. Size : $1' \frac{1}{2}" \times 10"$
Late Gupta Period
Bharatpur
889/91 1948
40. SŪRYA (Sun God) standing and exquisitely
carved ; hands hold sprouting branches of lotus.
Sand Stone. Size : $1'9" \times 1'4" \times 1'4"$
10th century A.D.
23 1946
41. REVANTA (Lord of Earth) on horse back, preceded
and followed by two attendants on horse back and
others on foot ; one of the attendants, on the extreme
right, is carrying the dead boar.
Sand Stone. Size : $2'2" \times 1'5"$
10th century A.D.
Mallah
63 1947
42. EIGHT ARMED GANEŚA, upper portion only.
Sand Stone Size : $1'3" \times 1'2"$
10th century A.D.
28 1946
43. COLOSSAL DAŚĀVATĀRA SLAB, profusely
carved; above the standing incarnation figures are
seated Sapta Mātṛikās and Navagrahas.
Sand Stone Size : $2'11" \times 4'11"$
10th century A.D.
Kumher
54 1947
44. HALO, in the form of full lotus flanked by Brahmā-
Sāvitri and Umā-Maheśvara.
Sand Stone. Size : $1'9" \times 1'5"$
10th century A.D.
Nadbai
58 1947

45. Facade of a temple ; two male figures with elongated ear-lobes.
Sand Stone. Size : 6'2" × 1'1"
10th century A.D.
Mallah
46 1947
46. VARĀHA AVATĀRA (Bore Incarnation) standing ; four-armed.
Red Stone. Size : 2'11" × 1'4"
10th century A.D.
Mallah
57 1947
47. TĪRTHAṆKARA ; mutilated figure ; Śvetāmbara Sect ; seated on lotus pedestal in meditation.
Sand Stone. Size : 2'1" × 2'
10th century A.D.
4 1945
48. PILLAR, depicting Jaina Tirthaṅkaras on all four sides ; badly defaced.
Sand Stone. Size : 2'2" × 10"
10th century A.D.
Nadbai
60 1947
49. TĪRTHAṆKARA, seated on a raised seat in meditation.
Sand Stone. Size : 2'7" × 2'1"
10th century A.D.
Bayana
968/96 1953
50. FEMALE CHOWRI-BEARER, designed with *kīrtimukha* emitting flames.
Size : 1'5" × 1'1½"
10th century A.D.
Mallah
51 1947

51. *CHOWRI-BEARER*, standing ; duly ornamented pedestal designed with *kirtimukha* emitting flames.
Sand Stone. Size : 1'5½" × 1'2"
10th century A.D.
Mallah
62 1947
52. *BRAHMĀNI*, standing ; four-armed ; duly ornamented. Spotted Red Stone. Size : 1'4" × 1'2"
10th century A.D.
Mallah
61 1947
53. *KUBERA*, standing ; holding money bag.
Size : 1'8½" × 1'6"
10th century A.D.
Mallah
65 1947
54. *FACADE* or Pillar, piece of some shrine, designed with *chaitya*-window type.
Sand Stone. Size : 2'3" × 1"
10th century A.D.
Mallah
50 1947
55. *KĪRTIMUKHA* and Flying Garland Bearer.
Greyish Stone. Size : 9" × 8"
10th century A.D.
Mallah
76 1947
56. *BRAHMĀ*, standing ; having long beard and *mukāṭa*.
Sand Stone. Size : 1'9" × 1'3" × 10"
10th century A.D.
Mallah
66 1947
57. *SŪRYA* (Sun God) standing ; having two arms holding lotus stalks ; profusely ornamented.
Sand Stone. Size : 2'7" × 1'

- Mediaeval Period
Bharatpur
21 1946
58. NRISIMHA AVATĀRA, face broken.
Sand Stone. Size : 1'10" × 1'6"
Mediaeval Period
Mallah
40 1946
59. BHAIRAVA, in dancing pose with elongated ears.
Sand Stone. Size : 1'3" × 10"
Mediaeval Period
Bharatpur
967/95 1953
60. NĀGA COUPLE, standing.
Size : 1'7" × 1'3"
Mediaeval Period
Bharatpur
85 1947
61. LADY with folded hands, seated on *chakra*.
Grey Stone. Size : 1'3" × 9"
Mediaeval Period
Mallah
22 1946
62. VARĀHA AVATĀRA, standing ; holding Earth-
Goddess with folded hands, on left hand.
Sand Stone Size : 2' × 1'6"
Mediaeval Period
Mallah
24 1946
63. RĀMA, standing ; two-armed ; holding an arrow
and bow on the left shoulder.
Sand Stone Size : 2'10" × 1'
Late Mediaeval Period
Mallah
45 1947

64. VISHNU, without head.
Grey Stone
Size : 8" × 8"
Mediaeval Period
Noh
87 1947
65. LADY ornamented with headdress; standing and face rubbed.
Grey Stone Size : 9" × 8"
Late Gupta Period
Noh
1006/112 1956
66. PĀRŚVANĀTHA, colossal piece; on its pedestal is an inscription of Samvat 1077 (A.D. 1020) of one line.
Sand Stone. Size : 6' × 3'9" × 2'6"
Bachchena
992/106 1955
67. PĀRŚVANĀTHA in meditation; on its pedestal is an inscription of three lines of Samvat 1109 (A.D. 1052)
Sand Stone Size : 2'3" × 1'2" × 1'4"
42 1946
68. NEMINĀTHA in meditation; head missing; inscription on its pedestal of one line—Samvat 1110 (A.D. 1053).
Black Stone. Size : 2'3" × 2'3"
Bhusawar
1004/111 1956
69. PĀRŚVANĀTHA; traces of snake coil visible; part of a colossal image.
Sand Stone. Size : 3'10" × 1'10"
11th century A.D.
Jaghina
53 1947

70. BUST OF VISHNU, elegantly carved and highly ornamented *kirtimukata* deserves special notice.
Sand Stone. Size : 1' x 11"
12th century A.D.
Halaina
980/103 1955
71. DOOR JAMB depicting four amorous couples below which there is fine Jamuna figure on tortoise with an umbrella-bearer.
Sand Stone. Size : 4'2" x 1'1"
Late Gupta Period
Mallah
34 1946
72. DOOR JAMB depicting Chāmuṇḍā, Vārāhī and Aindri.
Sand Stone. Size : 2'11" x 1'2"
Mediaeval Period
Mallah
81 1948
73. COUPLE, much mutilated ; to the right side are naked male and female in amorous pose.
Red Stone. Size : 1'8" x 1'9"
13th century A.D.
Mallah
20 1946
74. VISHNU HEAD, finely executed.
Sand Stone. Size : 7" x 3"
Mediaeval Period
1021/119 1956
75. ŚIVA, standing ; Nandi in the background.
Khari Stone. Size : 1'10" x 9"
14th century A.D.
Katara
991/105 1955

76. ŚIVA'S ATTENDANTS (Gaṇa) ; standing.
Red Stone. Size : 1'5" × 1'1"
14th century A.D.
Tuiya Sogar
1000/107 1956
77. DOOR LINTEL PIECE, depicting Navagrahas
preceded by Gaṇeśa and followed by Sarasvatī.
Grey Stone. Size : 4'3" × 1'10"
15th century A.D.
Mallah
31 1946
78. DOOR LINTEL of a Viṣṇu temple ; Brahmā and
Maheśa with consorts on respective vehicles on sides;
in between are standing Navagrahas.
Grey Stone. Size :
Medieval Period
Dholpur
1002/109 1956
79. PARIKAR (Canopy of Jaina Image) inscribed.
Marble. Size : 2'11" × 2'
Samvat 1679 (A.D. 1622)
Brahmabad (Bayana)
1036/131 1957
80. TĪRTHAṆKARA of Digambara sect ; standing.
Marble. Size : 1'2½" × 10"
Samvat 1679 (A.D. 1622)
Brahmabad
1032/127 1957
81. TĪRTHAṆKARA of Digambara sect.
Marble. Size : 1'2½" × 10"
Samvat 1679 (A.D. 1622)
Brahmabad
1033/128 1957
82. FACADE of Jaina Temple with inscription of Nur-ud-
Din ; Jahāngīr's time.

- Marble. Size : 2'3" × 1'
1622 A.D.
Brahmabad
1034/129 1957
83. TĪRTHAṆKARA—Portion above lion missing;
seated in meditation ; inscription on pedestal of
Samvat 1641.
Marble. Size : 1'4" × 7"
1584 A.D.
Bharatpur
5 1945
84. PILLAR OR SCULPTURE PIECE depicting some
Jaina devotee; seated and lion on left side.
Marble. Size : 1' × 10"
Brahmabad
1035/130 1957
85. RISHI, standing with up-turned moustaches and
long beard; wearing sacred thread ; playing on
kartāl.
Size : 1'6" × 9"
17th century A.D.
Bharatpur
33 1946
86. LAKSHMĪ, standing ; four-armed.
Sand Stone. Size : 1'4" × 9"
17th century A.D.
Bharatpur
30 1946
87. DHOLĀ-MĀRŪ, The famous love scene from
Rajasthan depicted in stone.
Greyish Stone. Size : 5'6" × 2'11"
17-18th century A.D.
Dholpur
1001/108 1956
88. NANDI (Bull) Śiva's vehicle.
Grey Stone. Size : 11" × 9"

19th century A.D.

Mallah

56

1947

- 89-90. KĀMADHENU AND KALPAVRIKSHA with two warriors (Sahasrabāhu—Paraśurāma). Presented by H. H. the Maharaja of Bharatpur.

Sand Stone. Size :

19th century A.D.

873/89 and 874/90

1948

91. MALE FIGURE, crudely made wrestler ; might be used by villagers to ward off evils.

Rough Grey Stone. Size : 4' × 3'

19th century A.D.

Sogar

37

1946

92. GIRDHĀRĪ (Kṛishṇa) ; probably converted from some Jaina image of medieval period ; standing.

Sand Stone. Size : 4'8" × 2'10"

19th century A.D.

Bharatpur

3

1945

- 93-94. VISHṆU, standing ; having four arms. Presented by H. H. the Maharaja of Bharatpur ; well draped.

Sand Stone. Size : 2'10" × 1'

19th century A.D.

Bharatpur

48 & 49

1947

95. KṚISHṆA, standing ; knob on head ; broken hands might be supporting flute.

Marble. Size : 1'3" × 7"

19th century A.D.

Bharatpur

1

1944

96. VĀMANA AVATĀRA, standing ; having four arms ; attended by two pairs of devotees.

- Sand Stone. Size : 1'9" x 1'6"
19th century A.D.
Bharatpur
77 1947
97. SATI, Stone piece; crudely made.
Red Rough Stone Size : 10" x 10"
19th century A.D.
Bharatpur
32 1946
98. HEAD with headdress, crudely made.
Rough Stone. Size : 1'6" x 1'
19th century A.D.
Bharatpur
75 1947
- 99- NAVAGRAHAS, seated with respective specific
106. symbols ; all broken.
Sand Stone
19th century A.D.
Bharatpur
67, 68, 69, 70, 71, 72, 73 & 74 1947
107. MOTHER AND CHILD, seated ; headless.
Grey Stone. Size : 4" x 3"
Mediaeval Period
Shargarh (Dholpur)
1027/125 1956
108. HEAD, face damaged ; headdress worth notice.
Red Stone. Size : 10" x 8"
Late Gupta Period
Shergarh
1019/117 1956
109. BUST OF MALE FIGURE.
Grey Stone Rough. Size : 7" x 5"
Mediaeval Period
Shergarh
1020/118 1956

110. COUPLE, standing ; broken.
Rough Red Stone. Size : 1'6" × 1'
Late Mediaeval Period
Shergarh
1017/115 1956
111. CHOWRI-BEARER, standing ; duly ornamented ;
feet broken.
Size : 1'10" × 8"
Late Mediaeval Period
Shergarh
1018/116 1956
112. MALE ATTENDANTS.
Rough White Stone. Size : 1'2½" × 7"
Late Mediaeval Period
Shergarh
1023/121 1956
113. COUPLE, flying garland bearers ; face and hands
broken.
Rough Stone. Size : 7" × 7"
Late Mediaeval Period
Shergarh
1022/120 1956
114. DEVOTEE, seated ; holding water vase with two
hands ; legs broken.
Rough Stone. Size : 6" × 4"
Late Mediaeval Period
Shergarh
1026/124 1956
115. TIRTHANKARA, seated in meditation.
Rough Stone. Size : 10" × 5"
Late Mediaeval Period
Shergarh
1025/123 1956
116. MALE HEAD, lovely face with interesting head-gear.
Red Stone Size : 6½" × 3"

Late Gupta Period

Shergarh

1028/126

1956

117. PILLAR—piece sculptured with various figures.

Rough Grey Stone. Size: $3' \times 2'$

Late Mediaeval Period

Dholpur

1003/110

1956

118. LADY DOOR-KEEPER ; two-armed.

Grey Stone. Size: $1'7\frac{1}{2}" \times 8"$

Late Mediaeval Period

Satwas

901/93

1949

119. COUPLE, standing in lovely pose ; faces broken.

Rough Grey Stone. Size: $1'7" \times 1'5"$

Mediaeval Period

Mallah

15

1945

120. PIECE DEPICTING GANEŚA ON RIGHT SIDE.

Sand Stone. Size: $4" \times 3\frac{1}{2}"$

Mediaeval Period

Noh

2

1944

121. MOTHER GODDESS, standing ; two arms hanging with closed grips ; ornamented.

Slate Stone. Size: $4\frac{1}{2}" \times 3"$

Mediaeval Period

Noh

79

1948

- 122- PILLAR PIECE, designed with Ghaṭa-Pallava ;
123. *kirtimukhas* inter-twined with snakes ; vase and foliage designs ; finely carved.

Sand Stone. Size: $2'4" \times 1'$

Late Gupta Period

Mallah

26 & 27

1946

- 124- **PILLARS** designed with duly ornamented standing
 125. *chowri*-bearers attended by two male and female
 figures ; *kiritmukhas* issuing creepers and supporting
 vase and foliage on head.
 Sand Stone. Size : 4' × 1'
 Early Mediaeval Period
 Mallah
 17 & 18 1946
126. **RIDER** on galloping horse back ; headdress unique ;
 saddle conspicuously shown.
 Reddish Stone
 Size : 1' 11" × 11"
 Early Mediaeval Period
 Shergarh
 1024/122 1956
127. **FACADE** of some temple (*Chaitya*-window type)
 with Śiva's head in centre having Greek influence
 in locks of hair.
 Sand Stone. Size : 2' 5½" × 2'
 Kushāṇa Period
 Mallah
 55 1947
128. **VISHṆU**, having four arms ; lower part broken ;
 ornamented.
 Sand Stone. Size : 5" × 4½"
 18th century A.D.
 Noh
 12 1945
129. **BRICK** ; with finger marks.
 Size : 10½" × 10½"
 Śuṅga Period
 Aghapur
 47 1947
130. **GAṄGĀ** in kneeling pose ; having four arms duly
 ornamented ; riding on *makara*.

Slate Stone. Size : 6" × 4"

19th century A.D.

Paramadra (Deeg)

965/94

1953

131. BULL ; standing sejant, two-horned ; left being broken ; eyes shown with discs and nose with holes.

Terracotta Black

Size : 3" × 4"

Kushāṇa Period

Bawen

975/98

1954

132. TORSO, probably of Mother Goddess.

Terracotta. Size : 5" × 5"

Śuṅga period

Helak Roondh

981/104

1955

133. BRICK, decorated with floral designs; broken.

Size : 5" × 5"

Gupta Period

Helak Roondh

1184/158

1955

134. MAHISHĀSURAMARDINĪ, presented by Chobey Yad Ram.

Black Soap-stone Size : 16" × 2"

18th century A.D.

Bharatpur

1007/113

1956

135. BRICK—light-baked ; rectangular.

Size : 15" × 9" × 2½"

Kushāṇa Period

Au

1123/136

1960

136. TORSO OF VISHṆU, wearing garland.

Sand Stone. Size : 1'8" × 1'

Mediaeval Period

Notha

1121/134

1960

137. LION HEAD—Ayal on shoulder ; mouth open.

Size : 1'6" × 1'6"

Late Mediaeval Period

Notha

1122/135

1960

138. ŚIVA-GAṆA, probably Kubera ; seated ; having two hands.

Red Stone. Size : 11½" × 10"

Mediaeval Period

Karili (Nadbai)

1125/137

1960

139. VISHṆU—standing ; without head and arms ; duly ornamented.

Sand Stone. Size : 3'2" × 2'1"

Mediaeval Period

Ekta

1126/138

1960

140. VISHṆU ; standing on lotus ; face damaged ; four arms ; wearing *vanamālā*, *kuṇḍala*, *bajubandha* ; incarnations on either wings.

Sand Stone. Size : 3'2" × 2'1"

Mediaeval Period

Ekta

1127/139

1960

- 141- ATTENDANTS OF VISHṆU ; only foot signs on
142. pedestals of Vishṇu survives.

Sand Stone. Size : 1'5½" × 1' and 1'5" × 1'7"

Ekta

1128/140 & 1129/141

1960

143. INDRA, standing ; much defaced ; elephant sitting near feet of the god.

Red Stone. Size : 2'10" × 1'9"

Late Gupta Period

Ouchagaon

1130/142

1960

144. DOG—standing ; legs broken.

Terracotta Red. Size : 2" × 2"

Kushāṇa Period

Noh

80

1948

145. TWO LION HEADS ; hairs shown by incised wavy lines.

Rough Red Stone. Size : 9" × 9"

Late Mediaeval Period

Aghapur

1133/145

1960

146. GANDHARVA, seated in flying mood ; having *kuṇḍala* in ears ; face damaged.

Red Stone. Size : 10" × 10"

Late Mediaeval Period

Samna-ka-Nagra

1135/147

1960

147. THREE SEATED GANDHARVAS in a panel.

Kankar Stone. Size : 14" × 24"

Gupta Period

Bawen

1178/152

1960

148. KĀRTIKEYA, seated in *padmāsana* ; weather worn ; having four arms and *kavacha* on belly.

Kankar Stone. Size : 1'5" × 1'5"

Gupta Period

Bawen

1179/153

1960

149. BALARĀMA HALDHARA—Plough in left hand ; standing.

Greyish Stone. Size : 1'5" × 9"

19th century A.D.

- Bawen
1180/154 1960
150. VISHNU—seated ; face broken.
Sand Stone. Size : 10" × 7"
19th century A.D.
Bharatpur
1811/155 1960
151. LAKSHMI—standing on lotus ; attendants on
either sides.
White Stone. Size : 5" × 5"
Early Mediaeval Period
Noh
1182/156 1960
152. VISHNU—Head having high *mukuta*.
Red Stone. Size : 6" × 4"
Late Gupta Period
Noh
1183/157 1960
153. MALE FIGURE, sitting on stool ; probably Gaṇeśa.
Terracotta Red. Size : 3½" × 2"
Śuṅga Period
Aghapur
1185/159 1960
154. HEAD having round open eyes and *jaṭamukuta* ;
damaged.
Red Stone. Size : 8" × 5"
Kushāṇa Period
Noh
1186/160 1960
155. HEAD OF VISHNU with ornamented *kīrti-mukuta*
and *kuṇḍalas*.
Grey Stone. Size 11" × 7"
Mediaeval period
Pathena
1187/161 1960

156. ANIMAL FIGURINE ; headless.
Terracotta. Size : $2'' \times 2\frac{1}{2}''$
Kushāṇa Period
Bharatpur Fort
1190/164 1960
157. ELEPHANT with traces of rider.
Terracotta Red. Size : $2'' \times 3''$
Kushāṇa Period
Bharatpur Fort
1191/165 1960
158. MAHISHĀSURAMARDINĪ ; The ten-armed
standing deity having lotus halo ; is profusely
ornamented. The demon coming out of detruncated
head of buffalo is worth notice.
Sand Stone Size : $3'1'' \times 2'6''$
Mediaeval Period
Sikrori (Kumher)
1189/163 1960
159. MALE FIGURE (head missing) ; flying mood ;
having garland in neck and traces of drapery on legs.
White Stone Size : $7\frac{1}{2}'' \times 8''$
Mediaeval Period
Bayana
1192/166 1960
160. DOOR JAMB with Varāha and Vāmana incar-
nations.
Sand Stone. Size : $8\frac{1}{2}'' \times 7\frac{1}{2}''$
Mediaeval Period
Oonchagaon
1193/167 1960
161. FEMALE HEAD, with peculiar choti.
Red Stone. Size : $4'' \times 3''$
Kushāṇa Period
Aghapur
1134/146 1960

162. INSCRIPTION of nine lines in Kuṭila script ; much defaced ; above are two warriors face to face with bow and arrow ; in left corner two figurines ; down below four Gandharvas in the right corner ; animal trampling a lying person ; in relief ; earliest inscription in Bharatpur Museum.
Red Stone. Size : 4'2" × 2'5"
7-8th century A.D.
13 1945
163. INSCRIPTION of seven lines in Devanāgarī script.
Red Stone Size : 2'8" × 2'
Samvat 1194 (A.D. 1137)
10 1945
164. INSCRIBED PEDESTAL of Sun Image in Devanāgarī script of the reign of Anangpal made by Roopkar (Sculptor) Bhopati.
Sand Stone. Size : 1'6" × 8"
Samvat 1243 (A.D. 1186)
Bayana
52 1947
165. INSCRIPTION in Arabic of nine lines of Zahiruddin Mohammad Babar's time ; Prince Kāmraṇ mentioned as Governor of Bayana.
Red Stone. Size : 3' × 2'6"
Samvat 1583 (A.D. 1526), A.H. 934
9 1945
166. INSCRIPTION of four lines in Devanāgarī script.
Sand Stone. Size : 2'2" × 1'2"
Samvat 1529 (A.D. 1472)
6 1945
167. INSCRIPTION of eight lines in Devanāgarī script along with a few lines in Persian at the right margin.
Kankar Stone. Size : 14" × 17"
Samvat 1586 (A.D. 1529)
8 1945

168. INSCRIPTION, in English. In the memory of those English men who fell dead in the Assault of Bharatpur.

Sand Stone. Size : 4'1" × 2'5"

18th January, 1826 A.D.

44

1947

169. GAJA-LAKSHMI depicted in a perforated frame ; presented by Shri Shambhu Nath Bharagava of Bharatpur.

Sand Stone. Size : 1'11½" × 1'11½"

20th century A.D.

Bharatpur

1195/169

1961

(B) NUMISMATICS

- 170- PUNCH-MARKED COINS—Earliest currency in
189. India ; extensive circulation and are found all over
India. These silver coins are punched with numer-
ous symbols, e.g., sun, hill, tree, *chaitya*, human figures,
elephant, rhinoceros, bull, dog, goat or deer, peacock,
fish, frog, snake, scorpion, bow, arrow etc. On
obverse are found punched several marks, while on
reverse, one two or three or no punch on rare coins.
These coins are crude in execution and circular or
concave in appearance with serrated edge.
Silver
4th century B.C. to 2nd century A.D.
809-828 1947
- 190- KUSHĀṆA COPPER COINS—Five thick and
194. large ; circular in size ; king standing on obverse ;
on the reverse shows deities, e.g. Śiva, Sun-God,
Moon-God, Wind God, etc.
829-833 1947
195. KUSHĀṆA COPPER COIN ; thick and large ;
circular in size ; king standing on obverse while
the Śiva Deity on Bull (rare type) on the reverse.
842 (BMC Catalogue Pl. XX) 1947
196. TINY COPPER COIN—Taxila ; circular.
843/1 1947
197. TINY COPPER COIN—Mathuraji ; circular ; one
side worn out.
843/2 1947
198. TINY COPPER COIN—Ujjain ; king standing with
staff in right hand on obverse ; circular.
843/3 1947
199. TINY COPPER COIN—Rajgiri ; square ; symbols
in high relief.
843/4 1947

200. TINY COPPER COIN—Kosam ; circular.
843/5 1947
201. BASE SILVER COIN—Irregular shape of Raja
Bhoj Deva ; inscription '*Śrīmad Varāha*' in part.
844 1947
202. COIN—Base silver of Raja Jai Chand ; small, thick,
circular ; inscription '*Śrī Ajey deva.*'
841 1947
203. COIN—Silver Rupee of King Nasiruddin Haider of
Oudh ; Reg. year 6 ; Hijri 1249 ; mint—Subah
Oudh ; circular.
838 1947
204. COIN—Silver Rupee of Amjad Ali Shah of Oudh ;
Reg. year 5 ; Hijri 1262 ; mint—Lucknow ; circular.
836 1947
205. COIN—Silver Rupee of King Wajid Ali Shah of
Oudh ; Reg. Year 5 ; Hijri 1267 ; mint—Lucknow ;
circular.
840 1947
206. COIN—Silver Rupee of King Ghaz-i-uddin Haider
of Oudh ; Reg. Year 2 ; Hijri 1236 ; mint—Lucknow ;
circular.
839 1947
207. COIN—Silver Rupee of Mohd. Ali Shah of Oudh ;
circular, ; Reg. Year 3 ; Hijri 1254 ; mint—Lucknow.
837 1947
208. COIN—Silver Rupee—Alwar State ; Queen Victoria
on obverse ; 1882 A.D. ; circular.
834 1947
209. COIN—Silver Rupee—Bikaner State of Maharaja
Ganga Singh ; Queen Victoria on obverse ; 1892
A.D. ; circular.
835 1947

210. COIN—Silver Rupee of Bajrang Garh State.
845 1947
211. COIN—Silver Rupee of Gwalior State.
846 1947
212. COIN—Silver Rupee of Jodhpur State.
847 1947
213. COIN—Silver Rupee of Kotah State.
848 1947
214. COIN—Silver Rupee of Datia State.
849 1947
215. COIN—Silver Rupee of Pertabgarh State.
850 1947
216. COIN—Silver Rupee of Indore State.
851 1947
217. COIN—Silver Rupee of Tonk State.
852 1947
218. COIN—Silver Rupee of Srinagar, Bundelkhand.
853 1947
219. COIN—Silver Rupee of Bundi State.
854 1947
220. SILVER RUPEE, circular ; of Mohd. Afzal Shah
Alam Badshah ; Jalus 40 ; mint—Farrukhabad.
884 1947
221. SILVER CIRCULAR MEDAL of Guru Nanak ;
inscription 'Sat-Kartar' ; 1804 A.D.
885 1948
222. TWO-ANNA PIECE ; Queen Victoria ; 1841 A.D.
888 1948
223. SILVER RUPEE ; Government of India ; 1950 ;
with Aśoka Sthambha.
919 1951

224. TINY SILVER COIN, Circular ; Persian Inscription ; Zalus 44.
886 1948
225. SILVER CIRCULAR MEDAL Rāma Lakshmaṇa Jānki, Jai-bolo Hanumānki.
226. SILVER RUPEE—India ; William ; 1111-1835 A.D.
227. SILVER RUPEE—India ; Victoria ; 1840 A.D.
228. SILVER RUPEE—India ; Victoria ; 1879 A.D.
229. SILVER HALF-RUPEE—East India Co. ; William 1111-1835 A.D.
230. SILVER HALF-RUPEES—Victoria ; A.D. 1840
231. & 1862.
232. SILVER QUARTER-RUPEE ; Victoria ; 1840 A.D.
233. SILVER TWO-ANNA PIECES ; Victoria ; A.D. 1840-1862.
234. SILVER ONE-ANNA PIECE of Udaipur ; V. S. 1985 ; Dosti-London ; Chitrakut-Udaipur.
887 1948
235. SILVER FOUR ANNA—George VI ; 1946.
236. SILVER RUPEE, Square ; of Mohd. Ulhasan, Hijri 987.
993 1956
237. SILVER—BASE PIECE ; hole in the centre ; 5 Mills of Palestine.
238. SILVER—BASE CIRCULAR COIN ; 12 PENCE ; 1811 ; on marjin 'Neath, Silver 'Token' on the otherside 'Payable' at H. Rees's & D. Morgan's.
239. DOLLAR—United States of America ; on obverse—Face, 1904 A.D.
240. HALF DOLLAR—United States of America ; on obverse Lady, Rising Sun, 'IN GOD WE TRUST' ; A.D. 1941.

241. QUARTER DOLLAR, United States of America ;
1941 A.D.
242. FIVE CENTS COIN—United States of America ;
1941 A.D.
243. ONE CENT COIN—United States of America ;
1943 A.D.
244. ONE DIME—United States of America ; 1941 A.D.
- 245- SILVER RUPEES—Thick, Circular, of Maharaja
246. Jaswant Singh ; V. S. 1910 ; Bharatpur ; Victoria
on obverse ; two coins.
160 1944
247. SILVER RUPEE, Thick, circular ; Victoria on
obverse ; 1867 A.D.
160 1944
248. SILVER RUPEES, Thick, circular ; Mint—Bharat-
to pur ; Arabic inscription. Six Muslim Coins.
253. 165 1944(6)
254. SILVER QUARTER RUPEE coin ; Arabic in-
scription. Afghanistan—Hijri 1216.
915 1950
255. ONE ANNA and ONE PICE—Pakistan, 1948 &
256. 1952.
957/25 & 1037/34 1952
257. ONE PICE of Bhawalpur State ; Copper.
1008/31 1956
258. ONE CIRCULAR COPPER COIN ; on reverse
1857 A.D. ; 'To Hanover' ; obverse, Queen Victoria.
914/16 1949
259. COPPER PICE of Ran Amir Shah Zedi.
982 1955
260. TWO THICK COPPER COINS.
261. 995 & 998 1956
262. COPPER COINS—One Arabic inscription ; and

263. the other U.S.A. One Cent.
1030 & 1031 1957
264. COPPER COINS—Indian and foreign ; Two Pice
Coin; Pice ; Half Pice etc.; circular ; 54 in numbers.
160 1944
265. COPPER COINS—Thick, Thin, circular, square-14.
165 1944
266. COPPER COINS—61. Foreign and Indian ; of
different types.
163 1944
267. COPPER COIN—One Pice of Jaipur.
855 1945
268. COPPER COIN—One Pice of Mughal Period.
894 1948
269. COPPER COIN, Large, circular ; Arabic inscription.
953 1951
270. COPPER PICE—India Government 1951.
954 1951
271. COPPER COIN—Navi Uddola Maharaja Zahir.
956 1952
272. COPPER PICE—Sri PRAGMALJI MAHARAJ
1929.
805 1946
273. COPPER COINS—Nepal Government, Sri
to Tribhuwan Vir Vikram Shah Deva, Pashupatinatha ;
279. 1995(3), 2001(1), 2004(2), 1999(1).
933-39 1951
280. GILLET COIN—Nepal Government.
940 1951
281. SILVER COINS—Nepal Government ; Tribhuwan
to Vir Vikram Shah Deo ; 2006(1), 1983(1), 2004(1)
288. 2000(1), 1816(1), 1968(1), 1833(1), 96(1).
925-32 1951

289. GOLD COIN—Nepal Government ; weight 17
Anna-bhar. Obverse—Sri Sri Sri Tribhuwan Vir
 Vikram Shah Deva 2003 ; Reverse—Sri Sri Sri
 Gorakhnatha, Om Bhawani.
 920 1951
290. GOLD COIN—Nepal Government ; weight $7\frac{1}{2}$
Anna-bhar.
 Obverse and reverse as on No. 289.
 921 1951
291. GOLD COIN—Nepal Government ; small ; weight
 4 *Anna-Bhar*.
 Obverse—Sri Prithvi Vir Vikram Shah Deva.
 Reverse—Sri Bhawani 1817.
 922 1951
292. GOLD COIN—Nepal Government ; small ;
 weight 2 *Anna-Bhar*. Same as No. 291, 1823.
 922 1951
293. GOLD TINY COIN—Nepal Government ; weight
 1 *Anna-Bhar*.
 Obverse—Sri Pasupati 76
 Reverse—Sri Sri Tribhuwan.
 883 1948
294. GOLD COIN—Mohd. Shah Badshah ; weight—
 $\frac{1}{2}$ *Ratti* less in 15 annas.
 Obverse—Mohd. Shah Badshah
 Reverse—Jhar, 11 Jalus.
 883 1948
295. GUPTA GOLD COIN — SAMUDRAGUPTA ;
 Standard Type ;
 Variety A ; size '83 ; weight 7.549 gr.
 Obverse—King standing facing right : 328-376 A.D.
 Reverse—Goddess sitting.
 1061 from Bayana Hoard.
 1960
296. GUPTA GOLD COIN — SAMUDRAGUPTA ;
 standard type ; variety C. ; size '88 ; weight 7.518 gr.

Obverse and Reverse same as in 295. C. 328-376 A.D. ; from Bayana Hoard.

1062

1960

297. GUPTA GOLD COIN—CHANDRAGUPTA II ; Archer type ; variety A ; size '85 ; weight 8.014 gr. ; note hair arrangement, *circa* 378-414 A.D. ; from Bayana Hoard.

1063

1960

298. GUPTA GOLD COIN—CHANDRAGUPTA II ; lion slayer type ; size '75 ; weight 7.890 gr ; rare. *Circa* 378-414 A.D. ; from Bayana Hoard.

1064

1960

299. GUPTA GOLD COIN—CHANDRAGUPTA II ; horseman type ; size '7 ; weight 7.929 gr. *Circa* 378-414 A.D. ; from Bayana Hoard.

1065

1960

300. GUPTA GOLD COIN—CHANDRAGUPTA II ; horseman type ; size '75 ; weight 7.816 gr ; from Bayana Hoard.

1066

1960

301. GUPTA GOLD COIN—KUMAR GUPTA I, Archer I type ; variety B ; size '7 ; weight 7.927 gr. ; *circa* 414-55 A.D. ; from Bayana Hoard.

1067

1960

302. GUPTA GOLD COIN—KUMAR GUPTA I ; Archer II type ; Var. A. ; size '78 ; weight 8.318 gr. ; from Bayana Hoard.

1068

1960

303. GUPTA GOLD COIN—KUMAR GUPTA I ; horseman I ; Var. C. ; size '71, weight 8.286 gr. Bayana Hoard.

1069

1960

304. GUPTA GOLD COIN—KUMAR GUPTA I ; horseman II, Var. A. ; size '7 ; weight 8.132 gr.

Bayana Hoard.

1070

1960

305. SILVER COIN—Base, Indo-Sassanian ; presented by Sri Swami Amrit Baghwacharya, Maharaj Gurudev ; size $3/4$ " ; circular ; *circa* 7-8th century A.D. ; from District. Ambala (Punjab).

1196

1960

ARMOURY SECTION

306. SWORD—Una, Sakela; 'Chidia' and 'Brichak' on ivory hilt; foreign; this Herat Blade was presented to Major-General Sir Hough Gough; copper gold-painted cover.
Size: 3'½" long.
SKB 333 1932-51
307. SWORD (Kirch) steel; 'Chidia' and 'Brichak' on ivory hilt; foreign; Seal—Henry Willkinson, London; of the time of H. R. H. Prince of Wales; India 1875-76 & Maharaja Jaswant Singh Bahadur, Bharatpur.
Size: 3'1¾" long
SKB 331 1932-51
308. SWORD—Una, steel (Faulad); bent; silver hilt with crocodile face; Indian; cover with Mohal, Tehnal and Kothi of Silver.
Size: 3'1½" long
SKB 1043 1932-51
309. SWORD—Tega, Sakela, Dunabi; iron hilt with golden Koft work; Parajdar (handle cover); covered with thin wire; seals on blade; Indian.
Size: 3'1" long
SKB 232 1932-51
310. SWORD—Una, Faulad, Irani; Chidia and Brichak on Shermahi (fish-bone) hilt with koft work.
Size: 3'3" long
SKB 345 1932-51
311. SWORD—Una, Faulad; Khurasani, Chidia and Brichak on simple hilt of Shermahi (fish-bone); seal—struck with fish sign.
Size: 3'5" long
346 1932-51
312. SWORD—Sakela; iron hilt Tāḍidār; carved with floral pattern.

Size : 3' long

688

1932-51

313. SWORD—Faulad ; Sirohi (little Bend) ; iron hilt ;
Tādidār.

Size : 3'3" long

689

1932-51

314. SWORD—Sakela ; Dunabi ; 'Dar-me-Kauḍi' ; iron
hilt ; gold koṭ work.

Size : 3' long

704

1932-51

315. SWORD—Faulad ; iron hilt ; Tādidār ; Tarkashi
with gold koṭ work.

Size : 3' long

235

1932-51

316. SWORD—Faulad ; Iron hilt ; simple with cover.

Size : 2'10" long

967

1932-51

317. SWORD—Una, Faulad ; iron hilt with silver work ;
check pattern, cover of ass leather.

Size : 2'3" long

782

1932-51

318. SWORD—Tegha ; Sakela ; Dunabi ; embossed seal ;
iron hilt ; Tarkashi and gold koṭ work ; cover with
'Chhuri and Chimṭā'.

Size : 2' 10" long

976

1932-51

319. SWORD—Deccan ; simple, heavy bend ; Sakela,
Tikki (Dips) four on blade ; iron hilt ;

Size : 2'3" long

851

1932-51

320. SWORD—Una, Faulad ; simple ; iron hilt.

Size : 3'1" long

370

1932-51

321. SWORD—Una, Faulad ; simple ; iron hilt.
Size : 3'1" long
369 1932-51
322. SWORD—Una, Faulad-gadārā; Chidia and Brichak ;
seal—2 carved ; Raindeer horn hilt.
Size : 3'4" long
194 1932-51
323. SWORD—Una, Faulad ; Irani ; Arabi written on
blade ; Raindeer-horn-hilt.
Size : 3'3" long
196 1932-51
324. SWORD—NEEMCHA (miniature) ; Faulad and
Sakela on either sides of blade ; iron hilt with gold
koft work.
Size : 2'1" long
1142 1932-51
325. SWORD—Faulad ; iron hilt with gold koft work.
Size : 3'1" long
675 1932-51
326. SWORD—Tegha; Sakela; Tinābī; seal carved; iron
hilt.
Size : 3'3" long
709 1932-51
327. SWORD—Tinabi ; Sakela ; edge with nali ; iron
hilt with gold koft work of floral design.
Size : 3' long
679 1932-51
328. SWORD—Sakela ; Tinābī ; iron-hilt ; Tāḍidār ;
gold koft work of floral design.
Size : 3'2" long
685 1932-51
329. SWORD—Faulad ; iron hilt; Tāḍidār ; gold koft
work of floral design.
Size : 3'2" long
676 1932-51

330. SWORD—Zulfiqar, Sakela ; four Arabi Ayats on blade; iron hilt—simple.
Size : 2'11" long
236 1932-51
331. SWORD—Faulad; Una; (blade Alemani Sinkiandar with two Kaudis on surface); iron-hilt with Tahnisan work of floral design. Size :
2'8" long
695 1932-51
332. SWORD—Una, Faulad ; Fauladi hilt ; golden edge (Korbandi Sunehri).
Size : 3'1" long
711 1932-51
333. SWORD—Faulad (Seenk Mohar-Sausanadar) ; Faulad hilt with gold koft work.
Size : 2'11" long
708/317 1932-51
334. SWORD—Una, Faulad Khurasani ; iron hilt; Hakim Khani ; gold koft work.
Size : 3' long
472 1932-51
335. SWORD—Faulad; iron hilt ; gold koft work of floral design.
Size : 3'1" long
707 1932-51
336. SWORD—Una, Faulad ; iron hilt with gold koft work of floral design.
Size : 3'1" long
678 1932-51
337. SWORD—Faulad ; both side nali ; one side of blade Sakela ; iron hilt; gold koft work of floral design.
Size : 2'11" long
684 1932-51

338. SWORD—'Alemani'; 'Tholia'; 'Gadhedar' (Cavities in blade); iron hilt; Tāridār (korbandi sunehri) gold edge.
Size: 3' long
674 1932-51
339. SWORD—Zulfiqar, Sakela; iron-hilt; Tāridār; silver work (Rupehra). Size: 3' long
716 1932-51
340. SWORD—Una, Faulad; iron hilt; gold koft work of floral design. Size: 3'4" long
344 1932-51
341. SWORD—Una, Faulad; iron hilt; gold koft work. Size: 3'4" long
677 1932-51
342. SWORD—Una, Faulad; iron hilt; gold koft work. Size: 2'11" long
329 1932-57
343. SWORD—Una Faulad; Khurasani; iron hilt; gold tahnishan work with floral design. Size: 2'11" long.
343 1932-57
344. SWORD—Una, Faulad; iron hilt; gold koft work. Size: 2'10" long.
682 1932-51
345. SWORD—Una, Faulad; iron hilt; gold koft work. Size: 3' long
342 1932-51
346. SWORD—Faulad; iron hilt; Tāridār; gold koft work. Size: 2'11" long
680 1932-51
347. SWORD—Sirohi (little bend), Sakela; 'Ek-Seenk-Nali'; iron hilt; gold tahnishan work. Size: 2'11" long
673 1932-51

348. SWORD—Una, Faulad ; 'Alemani' ;—'Peenth-par do-kaudi-bani'; iron hilt ; Taridar ; golden edge.
Size : 2'9" long
683 1932-51
349. SWORD—Faulad ; iron hilt ; gold koft work.
Size : 3'1" long
715 1932-51
350. SWORD—Neemcha (small with bend), Faulad ; iron hilt with gold koft work. Size : 2'5" long
437 1932-51
351. SWORD—Sakela ;—'Ek-kaudi-Pari'; Faulad hilt ; 'Baldar nathali'; gold koft work. Size : 3' long
706 1932-51
352. SWORD—'Katti Sakela'; (Dar-par-Mohar) seal on blade, Tinābi; Faulad hilt ; 'korbandi sunehri'.
Size : 3'2" long
372 1932-51
353. SANGEEN, Zafar Takia, to be kept below pillow; Ispat. Size : 1'6" long
861 1932-51
354. ZAFAR TAKIA SWORD—Faulad; Qabza (hilt) with Zarnishan work ; can be hidden below pillow and used in emergency.
Size : 2' long.
67 1932-51
355. SWORD—Zafar Takia—hilt of Faulad with silver work.
Size : 2' long
31 1932-51
356. SWORDS with flower (Jhar) hanging from roof ;
371. covered with two shields ; 16 in number.
1932-51
372. SWORDS with flower (Jhar) hanging from roof
385. covered with two shields ; 14 in number. 1932-51

- 386- SWORDS in flower (Jhar), covered with two shields ;
400. 15 in number. 1932-51
- 401- KIRCHES—around State Emblem on wall.
418. 1932-51
- 419- KIRCHES with lion mouth handles on wall.
434. 1932-51
435. KIRCH Ispat ; Chidia ; brass lion mouth ; fitted in Hanuman.
56 1932-51
436. KIRCH Ispat ; Fitted in Hanuman ; ivory hilt.
275 1932-51
437. DAGGER (Chhura) ; Faulad ; handle : Do-ali-loh with fine koft work on handle of fish bone.
Size : 2'7½" long
385 1932-51
438. DAGGER (Chhura) Sakela ; golden koft thick work ; 'Dasta-Dant' (ivory handle), with cover ; deshi.
Size : 2'3" long
387 1932-51
439. DAGGER (Peshqabz) Faulad ; horn handle Doali with golden koft fine work with floral scroll ; with cover. Deshi. Size : 1'7" long
403 1932-51
440. DAGGER (Peshqabz) Faulad ; Ivory handle—Doali with faint golden koft work. Size : 1'8" long
396 1932-51
441. DAGGER (Peshqabz) with handle of Faulad with floral carving on edge ; Seenk Pari Phool Khudai ; with cover.
Deshi. Size : 1'3" long
364 1932-51

442. DAGGER (Peshqabz), Sakela ; presented by H. R. H. the Prince of Wales 1875-76 ; Maker Wilkinson, London ; seals on other side of the blade in English and Urdu ; wooden black handle carved with silver nail and crystal on top ; with cover having two Chhuris ; silver work.
Size : 1'3" long
1932-51
400
443. DAGGER (Peshqabz), Sakela ; iron handle with Ganga-Jamani work (gold-silver koft work) ; with cover. Size : 1'1" long
391
1932-51
444. DAGGER (Chhuri), Faulad ; with inside another Chhuri of ivory handle ; Dasta of gillet with floral carving ; with cover. Size : 1' long
406
1932-51
445. DAGGER (Khukhri), of iron ; horn handle ; with cover. Size : 1'5" long
756
1932-51
446. DAGGER (Katar), Faulad ; Tāḍī gol fauladī handle with golden koft work ; with cover.
Size : 1'6" long
120
1932-51
447. DAGGER (Katar), Faulad ; Tāḍī faulad gadhedar (handle of faulad with depression) ; with cover.
Size : 1'5" long
801
1932-51
448. DAGGER (Katar), Faulad ; 'Tāḍī Loh-kam-koft Sunehra' (iron handle with golden koft work) with cover. Size : 1'10" long
1021
1932-51
449. DAGGER (Peshqabz), Faulad ; ivory handle.
Size : 1'4" long
1205
1932-51

450. DAGGER (Peshqabz), Faulad ; ivory handle.
Size : 1'3" long
1000 1932-51
451. DAGGER (Peshqabz), Faulad ; handle Do-ali, (Pasije-par-kam-koft-sunehra.)
Size : 1'3" long
998 1932-51
452. DAGGER (Peshqabz), Faulad ; horn handle.
Size : 1'6½" long
1196 1932-51
453. DAGGER (Peshqabz), Faulad ; Dasta-Dant.
Size : 1'7" long
1198 1932-51
454. DAGGER (Peshqabz), Faulad ; Dasta-Dant.
Size : 1'5" long
1002 1932-51
455. DAGGER (Peshqabz), Faulad ; Dasta-Dant broken.
Size : 1'5" long
997 1932-51
456. DAGGER (Peshqabz), Faulad ; Dasta-Seeng (broken).
Size : 1'5" long
1204 1932-51
457. DAGGER (Peshqabz), Faulad ; Dasta-Dant.
Size : 1'4" long
865 1932-51
458. DAGGER (Peshqabz), Faulad ; wooden handle.
Size : 1'1" long
1024 1932-51
459. DAGGER ((Chhuri), Faulad ; stone handle.
Size : 10" long
516 1932-51
460. DAGGER (Chhuri), Faulad ; Dasta-Seeng.
Size : 6½" long
38 1932-51

461. DAGGER (Chhuri), Faulad ; wooden handle.
Size : 11½" long
862 1932-51
462. DAGGER (Chhuri), Sakela ; horn handle.
Size : 11" long
44 1932-51
463. DAGGER (Chhuri), Sakela ; ivory handle broken.
Size : 1'1" long
81 1932-51
464. DAGGER (Chhuri), Faulad ; wooden handle.
Size : 1'2½" long
757 1932-51
465. DAGGER (Chhuri), Sakela ; wooden handle.
Size : 1'1" long
85 1932-51
466. DAGGER (Chhuri), Faulad ; broken ivory handle.
Size : 11" long
846 1932-51
467. DAGGER (Chhuri), Faulad ; horn handle.
Size : 11½" long
874 1932-51
468. DAGGER (Chhuri), Faulad ; horn handle.
Size : 1' long
35 1932-51
469. DAGGER : (Chhuri), Faulad ; ivory handle ; Gande-
dar.
Size : 1'1" long
1003 1932-51
470. DAGGER (Chhuri), Sakela ; (gold koft work on
handle) 'Do-nabi Pasije Doale-par-kam-Sunchra'.
Size : 1'3" long
758 1932-51
471. DAGGER (Chhuri), Faulad ; (gold work on edge)
'Do-ali-par-kam-korbandi' ; wooden handle.

- Size : 1'2" long
775 1932-51
472. DAGGER (Chhuri), Faulad ; 'Doali Pasije-par-kam-
koft Sunchra' ; fish bone handle.
Size : 1'1½" long
993 1932-51
473. DAGGER (Chhuri), Faulad ; ivory handle.
Size : 1' long
37 1932-51
474. DAGGER (Chhuri), Faulad ; ivory handle.
Size : 1'1" long
33 1932-51
475. DAGGER (Chhuri), Faulad ; ivory handle.
Size : 1'2" long
1001 1932-51
476. DAGGER (Chhuri), Sakela ; broken ivory handle.
Size : 1'6" long
746 1932-51
477. DAGGERS (Chhuri), Faulad ; ivory handle.
482. Size : 8½" long
1192(6) 1932-51
483. DAGGER (Chhuri), Sakela ; ivory handle.
Size : 9" long
82 1932-51
484. DAGGER (Chhuri), Faulad ; broken ivory handle.
Size : 10" long
80 1932-51
485. DAGGER (Chhuri), Faulad ; horn handle broken.
Size : 1'6" long
747 1932-51
486. DAGGER (Chhuri), Faulad ; 'Pasije Pital' (brass) ;
ivory handle. Size : 10" long.
75 1932-51

487. DAGGER (Chhuri), Faulad ; ivory handle.
Size : $10\frac{1}{2}$ " long
46 1932-51
488. DAGGER (Chhuri), Faulad ; broken fish bone
handle. Size : 9" long
73 1932-51
489. DAGGER (Chhuri), Faulad ; ivory handle.
Size : $9\frac{3}{4}$ " long
77 1932-51
490. DAGGER (Chhuri), Faulad ; ivory handle.
Size : $11\frac{1}{2}$ " long
71 1932-51
491. DAGGER (Chhuri), Faulad ; broken ivory handle.
Size : 1' long
846 1932-51
492. DAGGER (Chhuri), Faulad ; Dasta-stone abardar.
Size : 10" long
1004 1932-51
493. DAGGER (Chhuri), Faulad ; ivory handle.
Size : $11\frac{1}{2}$ " long
70 1932-51
494. DAGGER (Chhuri), Faulad ; ivory handle.
Size : 1' 4" long
1200 1932-51
495. DAGGER (Chhuri), Faulad ; ivory handle.
Size : 1' long
69 1932-51
496. DAGGER (Chhuri), Faulad ; ivory handle.
Size : $7\frac{1}{2}$ " long
74 1932-51
497. DAGGER (Chhuri), Faulad ; gold koft work on
handle (Korbandi Pasiye). Size : 8" long
815 1932-51

498. DAGGER (Chhuri) Sakela; Gadhedar; (with cavities)
wooden handle with golden koft work. Size : 9½" long
84 1932-51
499. DAGGER (Chhuri), Faulad ; with gold koft work.
Size : 11" long
143 1932-51
500. DAGGER (Chhuri), Faulad ; broken ivory handle.
Size : 8" long
91 1932-51
501. DAGGER (Chhuri), Faulad ; Dasta-Dant ; 'kam-
koft-sunchra'. Size : 10" long
144 1932-51
502. DAGGER (Chhuri), Faulad ; (handle stone mixed
with Sankh) Dasta Pathar—Seep. Size : 1' long
142 1932-51
503. DAGGER (Chhuri), Faulad ; marble handle.
Size : 1' long
145 1951
504. DAGGER (Chhuri), Faulad ; 'Pasije Loh-kam-koft-
sunchra'; jade (Sangeyasab) handle with horse head.
Size : 1'1" long
146 1932-51
505. NASTAR ISPAT ; silver handle
Size : 6" long
65 1932-51
506. NEHANI OF ISPAT ; ivory handle broken ; tiny.
Size : 5" long
62 1932-51
507. DAGGER (Peshqabz), Faulad ; fish bone handle.
Size : 1'4" long
376 1932-51
508. DAGGER (Katar), Faulad.
509. Size : 1'10" long
375(2) 1932-51

- 510- DAGGER (Katar)—18 ; used in the formation of
527. Hanumanji. 1932-51
- 528- DAGGER (Katar)—22 ; used in wall decoration.
549. 1932-51
550. SWORD-miniature (Neemcha), Faulad;
Iron handle. Size : 1'3½" long
1082 1932-51
551. SWORD—miniature (Neemcha) Faulad.
Size : 1'7" long
1083 1932-51
552. DAGGER (Bichhua), Faulad; brass handle.
Size : 10" long
983 1932-51
553. DAGGER (Bichhua), Faulad; horn handle.
Size : 1'5" long
1046 1932-51
554. DAGGER (Bichhua), Ispat ; brass handle.
Size : 11" long
30 1932-51
555. DAGGER (Bichhua), Faulad ; iron handle;
Tāḍidār. Size : 1'4" long
984 1932-51
556. SWORD—miniature (Neemcha), Faulad ;
iron handle; Tāḍidār; faint work.
Size : 1'10" long
1136 1932-51
557. SWORD—miniature (Neemcha), Faulad ;
iron handle-kam-rupehara (silver) ;
Size 1'8" long
1137 1932-51
- 558- SANGEENS for decoration (60 in all).
617. 1932-51

- 618- REVOLVERS (Pistols), Foreign ; Chaunali (Four
619. round) ; Kartusi (Bullet) ; horn handle with floral
embossing ; Body of Gillet Nos. 5897 and 5276.
Size : 8" long each
754 1932-51
620. REVOLVER (Pistol), Foreign ; Topidar ; wooden
handle with check carving ; No. 5734 rubbed off.
Size : 10" long
167 1932-51
621. REVOLVER (Pistol), Foreign ; Kartusi ; wooden
handle with check carving ; of five rounds No. 87634
Size : 8" long
180 1934-51
622. REVOLVER (Pistol), Foreign ; Topidar ; improved
revolving pistol ; wooden handle. Size : 9" long
518 1932-51
- 623- REVOLVERS (Pistols), Foreign ; Topidar ; Eknala ;
624. Handle of silver with coloured floral carving.
Size : 6" long each
515 1932-51
625. REVOLVER (Pistol), Deshi ; 'Pathridar' ;
'Eknala' ; wooden handle, plain. Size : 7" long
517 1932-51
626. REVOLVER (Pistol), Foreign ; Topidar ; Donali ;
Sangeen-lagi ; wooden handle. Size : 9" long
514 1932-51
627. REVOLVER (Pistol), Deshi ; Topidar ; Donala ;
wooden handle. Size : 1' long
821 1932-51
628. REVOLVER (Pistol), Deshi ; Pathridar ; Eknala ;
'Gaja', missing ; wooden handle with brass top and

Palki : Rs. 5/- Size : 1'4" long

833

1932-51

629. REVOLVER (Tamancha), Deshi ; Topidar ; 'Nal Loh' ; Eknala ; wooden handle ; costing Rs. 3/-
Size : 1'9½" long

854

1932-51

- 630- REVOLVERS (Pistols-46), Foreign ; unserviceable ;
675. Kartusi Chakkardar ; fitted on round stand.
Size : 10" long each.

656

1932-51

676. REVOLVER (Pistol), Foreign ; Charkhidar ; Kartusi ;
Eknala ; Pertaji-kam.
Size : 11½" long

657

1932-51

677. REVOLVER (Pistol), 'Pathridar, Pitli, Barchha
laga hua' ; with automatic system of bullet and lance.
658

1932-51

- 678- GUNS (Sher Bachchas), Nal Loh ; Pathridar ;
682. Eknala ; wooden butt. Size : 2'9" long each
654(5)

1932-51

683. GUN (Sher Bachcha), Pathridar ; Nal Loh ; broken ;
wooden butt ; Eknala ; wide mouth.
Size : 2'8" long

684. GUN (Sher Bachcha), 'Pathridar' ; Nal Loh ; Eknala ;
wooden butt.
Size : 2'8" long

491

1932-51

685. GUN (Sher Bachcha), 'Pathridar' ; Eknala Loh-ka ;
wooden butt. Size : 2'9" long
483

1932-51

686. SWORD — miniature (Neemcha), Faulad ; Dasta-
Dant ; Chhattar and Katar carved on blade.
Size : 1'10" ; bent

788

1932-51

687. SWORD—miniature (Neemcha Ispat-ka), 'Ek-Seenk ;
Do-Kaudi-Pari' ; Iron handle. Size : 1'9½" long
1131 1932-51
688. SWORD (Zafar Taqia), Faulad ; 'Seenk-Do-Pari-
Kaudi' Do Mohar Khudi ; Qabza Loh.
Size : 1'10" long
982 1932-51
689. GUN (Banduq), Foreign ; Topidar ; Donali ; wooden
butt. Size : 3'8" long
525 1932-51
690. GUN (Banduq), Foreign ; Donali, Topidar ; 'Parde-
me-nifal'. Size : 3'9" long
526 1932-51
691. GUN (Banduq), Foreign ; Donali ; Topidar ;
Palkipar No. 360/2/1. Size : 3'10" long
527 1932-51
692. GUN (Banduq), Foreign ; Donali ; Topidar ; 'Purje-
me-kam-sunehra' (gold work). Size : 4' long
528 1932-51
693. GUN (Banduq), Foreign ; Donali ; Topidar ;
Palkipar No. 3601. Size : 3'10" long
529 1932-51
694. GUN (Banduq), Foreign ; Donali ; Topidar ;
Palki-par No. 5449. Size : 3'9" long
530 1932-51
695. GUN (Banduq), Foreign ; Donali ; Topidar ;
Palki-par No. faint. Size : 3'10" long
531 1932-51
696. GUN (Banduq), Foreign ; Donali ; Topidar ;
Farsi-par No. 170. Size : 3'10" long
532 1932-51
697. GUN (Banduq), Foreign ; Donali ; Topidar.
Size : 3'8" long
533 1932-51

698. GUN (Banduq), Foreign ; Donali ; Pathardar.
Size : 3'9" long
534 1932-51
699. GUN (Banduq), Karben ; Eknali ; Topidar.
Size : 3'4" long
561 1932-51
700. GUN (Banduq), Eknali ; Topidar ; Deshi ; 'Chanp-
par-Sher-Khuda'. Size : 3'10" long
562 1932-51
701. GUN (Banduq), Topidar ; Eknali. Size : 4'6" long
563 1932-51
702. GUN (Banduq), Eknali ; Topidar ; Deshi.
Size : 4'5" long
564 1932-51
703. GUN (Banduq), Eknali ; Topidar ; Deshi.
Size : 3'9" long
565 1932-51
704. GUN (Banduq), Eknali ; Topidar ; 'Nal-par-kam-
Sunehra' (gold work). Size : 3'5" long
566 1932-51
705. GUN (Banduq), Eknali ; Topidar ; Bilayati ;
Athpahlu-nal No. 61. Size : 3'11" long
567 1932-51
706. GUN (Banduq), Eknali ; Topidar ; Bilayati ;
Athpahlu-nal No. 61. Size : 3'10" long
568 1932-51
707. GUN (Banduq), Eknali ; Topidar ; Bilayati ;
Athpahlu-nal ; No. 3598.
Size : 3'8" long
569 1932-51
708. GUN (Banduq), Eknali ; Topidar ; Bilayati.
Size : 4'2" long
570 1932-51

709. GUN (Banduq), Eknali ; Topidar ; Deshi Nal ;
Athpahlu. Size : 4' long
571 1932-51
710. GUN (Banduq), Hawai ; Eknali Lattudar.
711. with brass ball for killing birds.
Size : 4' long each
609(2) 1932-51
712. GUN (Banduq), Charkhidar ; Chhe-fer-ki (Six
rounds) ; broken ; Deshi. Size : 6' long
573 1932-51
713. GUN (Banduq), Eknali ; Rifle ; Topidar ; Bilayati.
Size : 5'2" long
572 1932-51
714. GUN (Banduq), Toḍedar ; Deshi ; gold koft work ;
Bijay Singh marked.
Size : 5'6" long
622 1932-51
715. GUN (Banduq), Toḍedar ; Deshi ; Eknali.
Size : 5' long
857 1932-51
716. GUN (Banduq), Toḍedar ; Deshi.
Size : 5'3" long
631 1932-51
717. GUN (Banduq), Toḍedar ; Deshi ; 'kām-koft-
Rupehra'. Size : 5'4" long
627 1932-51
718. GUN (Banduq), Topidar. Size : 5'5" long
619 1932-51
719. GUN (Banduq), Toḍedar ; Deshi.
Size : 6'3" long
368 1932-51

720. BANDUQ; Toḍedar; Deshi; used in Fort defence.
 721. Size : 7'4" ; 7'1" long.
 650 (2) 1932-51
722. BANDUQ, Ramchangi; Toḍedar; Deshi (long).
 Size : 8'2" long.
 1060 1932-51
723. BANDUQ, Toḍedar; Deshi(long).
 Size : 8'2" long.
 1076 1932-51
724. BANDUQ, Toḍedar; Deshi; sufficiently
 long. Size : 9'10" long.
 317 1932-51
725. BANDUQ, Toḍedar; Deshi.
 Size : 8'1" long
 1052 1932-51
726. BANDUQ, Toḍedar; Deshi.
 Size : 7'5" long
 1028 1932-51
- 727- RIFLES (Banduq), Kartusi; Turkish; Bharatpur
 738. forces got them in the first World War—1914-18.
 Size : 4'2" long
 661 (12) 1932-51
- 739- RIFLES (Banduq), Kartusi; Turkish; Bharatpur
 767. forces got them in the first World War—1914-18.
 Size : 4'2" long
 667 (29) 1932-51
- 768- CHADDAR (Miniature Canons), two sets of 11 each ;
 769. historical ; used in battle with Jaipur forces ; easy
 to handle and forceful in destruction.
 Size : 3'4" long each
 489 & 484 1932-51
770. LANCE—Barchhi; 'Sangnuma Lohe-ki.'
 Size : 6'7" long
 379 1932-51

771. LANCE—'Barchha'; coloured Ivory work (Kam-Hathi-Dant-Rang-ka).
Size : 7'9" long
578 1932-51
772. LANCES — 'Ballam Mangdar'.
773. Size : 7'9" long each
651 1932-51
774. LANCE.
Size : 7'9" long
575 1932-51
775. LANCE—'Barchhi ; Loh-ki.' Size : 5'7" long.
576 1932-51
776. LANCE—"Sang Loh-ki-Tame-Ghundi-Hatta-ki."
Size : 6'2" long
577 1932-51
777. LANCE—'Barchhi ; Lohe-ki.' Size : 6'8" long
579 1932-51
778. LANCE—'Barchhi Loh-ki-Tame-Ghundi-Hatta-ki.'
Size : 5'9" long
580 1932-51
779. GUPTI—Secret weapon; Lohe-ki ; Teen Tookki'
(three pieces) ; handle of Silver Mooth Chandi-ki.
Size : 4'5" long
16 1932-51
780. GUPTI—Secret weapon; Loh; Dasta Loh.'
Size : 3' long
14 1932-51
781. GUPTI—dar Ispat ki Danti nikle ; myan Chandi ;
Pertaji-me-Dasta-Dank-Surkh. Size : 2'9½" long
8 1932-51
782. GUPTI—dar Ispat, Koft-ka-kam ; (parrot mouth
on handle) ; Kam-jal-Badrin-ka. Size : 3' long
11 1932-51
783. JOGNI (Zagnol), Sakela ; Wooden handle (Dandi
Chobi).

- Size : 11" long
1048 1932-51
784. JOGNI (Zagnol), Faulad ; 'Dasta Loh Mullamma Rupehra, Myan-Faulad-kam-Korbandi-Sunehra.'
Size : 9' long \times 1'8"
1037 1932-51
785. BHUJALI, Faulad ; ivory handle (Dasta Dant).
Size : 2' long
1036 1932-51
786. TABAL, Ispat ; wooden handle. Size : 5" long
804 1932-51
787. FARSA (Small), Ispat.
Size : 5" long
859 1932-51
- 788- JHANDA (Local Military flag or Nishan) ; 'Baisi-
791 Paltan of Fojdar Devi Singh Mantri, Bharatpur Raj' ; damaged.
1291(4) 1932-51
- 792- GHUTATI—Nishan of Paltan, carried in the front
793 in Battlefield ; very long.
597(2) 1932-51
- 794- JHANDA(2)—Nishan Paltan ; one of the monogram
795 of Bharatpur State and the other Hanumanji on both
sides ; gold embroidery work on silk ; used in the
front in Battlefield.
1932-51
- 796- SEENGRA Gun Powder containers of conch.
800. (Barud-Rakhne-ki-Sceпки) (5) ; Size : 7" each
381 1932-51
801. SEENGOTA (Gun Powder container), 'Seeng-ka-Munh' peethpar-kam-Dant-ka (ivory inlay work on mouth and back). Size : 4"
1053 1932-51

802. KUPPI (copper gun powder container). Size : 10"
1086 1932-51
803. GAITISH, Faulad ; Leg covers with fine golden
koft work in floral design used by warriors in
Battlefield for safeguard of legs.
Size : 1'3½" long each
899(2) 1932-51
804. DASTANE, Faulad ; Arm covers with faint golden
koft work used by warriors for the safeguard of arms.
Size : 1'
901(2) 1932-51
805. JUTA JORI, A Shoe pair of leather with Faulad
nails inserted. Size : 10"
902(2) 1932-51
- 806- AINE, Breast covers of Faulad with gold faint koft
809. work on border ; Arabi written. Size : 9" each
803(4) 1932-51
810. TOPI, 'Faulad Kalangi Lagi' ; A helmet of Faulad
with faint golden koft work. Size : 8"
904 1932-51
- 811- TOPI, iron caps with sun and moon carved ;
814. Size : 6" each
1246(4) 1932-51
815. TOPI, iron helmet.
Size : 8"
905 1932-51
816. DHAL (Shield), Faulad ; (golden koft work).
Size : 1'
1075 1932-51

817. DHAL (Shield), Faulad ; Fine Moghul Shield with Arabi inscription in koft work, embossed with floral designs on edge at both inside and outside;
Size : 1'7"
1049 1932-51
818. DHAL (Shield), leather shield with four revolvers fitted in; used both for defence and offence in battle.
Size : 1'5"
374 1932-51
819. DHAL (Shield), 'Chamde-ki-Kamal-Loh-Khuda-hua'.
Size : 1'9"
1286 1943-51
- 820- DHAL (Shield), 'Chhoti Pitli, Tame-Phool-Pital-ke-
821. char'. Size : 10" each
1247(2) 1932-51
822. DHAL (Shield); 'Pitli—Tame-Phool-Char-Pital-ke'.
Size : 9"
1954 1932-51
- 823- DHAL, Leather 'Chamre-ki' (leather shield).
828. Size : 1'10" each
1264(6) 1932-51
- 829- DHAL, Leather 'Chamre-ki'.
830.
831. DHAL—Leather 'Chamre-ki' ; white painted.
Size : 1'10" each
1264 1932-51
832. KHAL, (Rhinoceros leather used in shield-making).
Size : 2'
1270 1932-51
- 833- RANJAK DANI (Gun Powder flasks).
834.

Size : 7" each

127 & 253 1932-51

835- DAMKALA GOLA NUMA, 'Pital-ka' ; 'Hawa-ki-

836. Banduq-ka'(2). Size : 6"

271 & 292 1932-51

837- GOLA TOP KA with iron stands (2); (Bomb shells

838. empty of canon) ; very heavy. Size : 10" each

662 & 665 1932-51

839. BAGH PANJA, Loh-ka ; three Nakhoon, used in
self-defence. Size 3"

380 1932-51

840- KAMAN (Bows of Bamboo) ; used in old warfare.

841. 1960

842. ARROWS (12) ; used in old warfare and hunting birds
etc.

843. PHOOL—DHAL KE (12).

844. BARCHHA—BURI (24).

845. BAZ; of wood with inside miniature tools; damaged.
1932-51

846. CHAKU ISPAT ; (knife) 'Dasta Dant' (Handle of
ivory).

63

847. CHAKU (Knife) ; Handle of ivory (Dasta Dant)
with *ari* and four blades.

583 1932-51

848. TORPEDO in the form of Aeroplane for destroying
the ship in sea-water (bomb shell).

849. CANON : large (Machine Gun); presented to G.H.I.
Force by the British Government in 1914-18.

1297 1947-51

850. GUN (Canon) ; Turkish; damaged.

1305 1948-51

851. GURJ FAULAD ; 'Kam-korbandi-sunehra-ura-hua,
Dantedar Kamarkhi ; Dasta-Loh-kam-koft-sunehra-
ura-hua.' Size : 2'6"
1035 1932-51

852- ARMOURS OF RINGS—One large and the other
853. waist-cut used by warriors in battle.

ARTS, CRAFTS & INDUSTRY SECTION

- 854- FLY-WHISKS (Chanwars), of Sandalwood ;
damaged.
Size : 1'8" & 1'5"
410 1946
856. FLY-WHISK of ivory ; damaged.
Size : 1'8"
417 1944
857. FLY-WHISKS—Three in number ; of Khajur with
pat-binding of beads and cowry. Size : 2' each
K. 312 1944
858. HAT (Sun Helmet), of sandalwood ; intricate
weaving in sandalwood ; unique art of Bharatpur.
Size : 1'1"
399 1944
859. HAND-BAG ; of sandalwood with intricate weaving
on both sides. Size : 8" × 5"
943 1951
860. ANTIMONY CASE (Itradan) of sandalwood with
intricate weaving on cover. Size : 7" × 5"
996 1956
- 861 COT (Palang) ; miniature of sandalwood with
intricate weaving. Size : 10" × 6"
942 1951
862. ANTIMONY CASE (Sringardan) ; of sandalwood
with intricate weaving mixed with silver thread.
Size : 1'2½" × 7"
902 1949
863. RAHANT ; of sandalwood with four toys.
Height : 1'1"
901 1949
864. CHARIOT ; driven by two horses ; of sandalwood
with intricate weaving in silver thread.
Size : 1'5" × 10" × 6"
941 1951

865. HAND FAN ; of sandalwood with intricate weaving.
740 1944
866. HAND FAN ; of ivory with intricate weaving.
497 1944
- 867- HAND FANS ; of *Sirki-cheep* & *Pot work* ; fine rural
868. art.
984 & 291 1944
869. INK-POT STAND ; with three pen-holders of
sandalwood.
K. 293-296 1944
- 870- ANTIMONY BOXES ; with coloured woollen
871. flower-coverings.
K. 116 & 286 1944
872. ANTIMONY BOX—Hexagonal, with paintings on
glass above, and on wood inside.
- 873- ANTIMONY BOXES (Itradans) ; with ivory in-lay
874. and over-lay work ; damaged.
493-494 1944
875. ANTIMONY BOX (Itradan) ; with Brass work
over-laid.
495 1944
876. ANTIMONY BOX (Itradan) ; of sandalwood with
ivory over-lay work ; damaged.
293 1944
877. TROUSER, Lady's Garment of Meoni ;—an agri-
cultural Muslim caste.
411 1945
878. TABLE COVER with Print.
412 1945
879. GLASS BANGLES—five in number ; with typical
joints.
276 1944
880. PURSE (Nauri) ; of cotton thread used by Meos—
an agricultural Muslim caste.
808 1945

881. PITCHER SUSTAINER ON HEAD, depicting
typical rural art.
496 1944
882. *MOONJ BAN*; very thin; four in number.
122 1946
883. DANCING PEACOCK; of sandalwood.
997 1956
884. *EARTHEN-WARES* from Nagar (Bharatpur);
utensils used in domestic work; TEA-SET—six in
number.
145 1944
885. MINIATURE CANNON.
123 1944
- 886- SMOKING POTS & VASES (CHILAM) with
891. cover etc.
124, 136, 138, 139, 141 & 142. 1944
- 892- FLOWER VASES (GHAMLA).
893. 126 & 140 1944
894. INK POT.
125 1944
895. FIRE STAND with pan.
127 1944
896. CASE with punched flower designs.
128 1944
- 897- SMALL VASES (HANDIA).
898. 129 & 131 1944
899. GLASS; for drinking water; with incised decora-
tion. 130 1944
900. *KHATOTTI*; with incised flower decoration.
132 1944
901. DIBIA of kerosene oil (lamp); kept with 'Progress
of Light.'
133 1944

902.	TOY WITH SOUND (Jhunjhuna).	
	134	1944
903.	YAM-PUKHAR—a type of fountain used in Deepawāli Festival.	
	135	1944
904.	BELAN—sound-making.	
	137	1944
905.	SPOUTED VASES, with cover in some cases.	
911.	143-44, 147-49 & 152-53	1944
912.	GOBLET (Surahi), round in shape.	
	146	1944
913.	LAMPS with 'Progress of Light'.	
914.	150 & 157	1944
915.	HUKKA (Smoking vase).	
916.	154 & 159	1944
917.	STONE-WARE of Bharatpur ; chain (<i>sankal</i>).	
	114	1944
918.	CANE.	
	110	1944
919.	KUNDI.	
	111	1944
920.	TEA-POT (Ketli).	
	112	1944
921.	SEMIE-Making MACHINE.	
	116	1944
922.	PARROT ; damaged.	
	119	1944
923.	JALI (perforation work in stone).	
	47	1944
924.	MARBLE WORK of MAKRANA—HANDIS, one	
927.	with cover.	
	335	1944

928.	BOWL with cover.	
	335	1944
929.	VASE with golden work.	
	335	1944
930.	TRAY with golden flower painting.	
	406	1944
931.	GLASS with cover, with golden work.	
	113	1944
932-	SMALL TRAYS with inlaid flower work,	
935.	including two large trays.	
	226, 227	1944
936.	PAPER WEIGHT with fine inlaid coloured work.	
		1944
937.	LID with knob.	
	334	1944
938.	FLOWER VASE of foreign make.	
	332	1944
939-	<i>POTTERY</i> from Bikaner, Jaipur etc., five	
943.	small vases and goblets with fine gold work depicting floral designs from Bikaner.	
	1164-68	1960
944-	FLOWER POTS & A VASE, with floral	
946.	pattern from Jaipur.	
	1161-63	1960
947-	BLACK GOBLETS with HANDLE, with	
948.	embossed and inlaid works from Bengal.	
	151 & 156	1944
949-	GOBLETS with handle.	
951.	331	1944
952-	FLOWER POTS.	
957.	325 & 331	1944
958-	PAIR OF BOWLS.	
959.	325	1944

960.	Jug. 141	1944
961.	SOAP-CASE. 141	1944
962.	Large BOWL (Chilamchi).	1944
963-	JAR (<i>Ghara</i>) and Wooden Stand.	
964.	785 & 221	1944
965-	STANDS of FLOWER-POTS.	
967.	332 (3)	1944
968-	FLOWER POTS ; foreign make.	
971.	323 (4).	1951
972.	FLOWER POT ; foreign make. 326	1951
973.	GLASS-WARE—BLUE TRAY ; foreign make. 224	1951
974-	FLOWER POTS of different types ; foreign make.	
990.	326-28 (17)	1951
991-	VASES with LIDS of semi-precious stone ;	
992.	foreign make. 330	1951
993.	JAR of Green Colour ; foreign make. 336	1951
994.	SPOUTED VASE ; foreign make. 897	1951
995.	BRASS-WARE from Jaipur and other places. VASE with COVER, two parrots attached. 1152	1960
996.	ROSE WATER SPRINKLER. 1153	1960
997.	WATER VESSEL ; enamelled. 1154	1960

998.	Circular SALVER with embossed work. 1155	1960
999.	CIGARETTE CASE ; Enamelled. 1156	1960
1000.	Circular TRAY with Carving. 1157	1960
1001.	SPOUTED VASE with Cover ; 17 garnets fitted in it. 1158	1960
1002.	JAR with embossed figurines. 1159	1960
1003.	Oval TRAY with lion hunting scene. 1160	1960
1004.	WATER VASE with Cover and handle duly carved. 96	1951
1005.	ANTIMONY CASE ; enamelled. 203	1951
1006-	Copper PITCHERS (<i>Kalash</i> and <i>lota</i>). 1007. 102-3	1951
1008-	VASES of different kinds. 1012. 97-99 & 107-8 (5).	1951
1013.	GLASS for drinking water. 105	1951
1014.	COOKING POT. 109	1951
1015-	BOWLS. 1016. 100 & 106 (2)	1951
1017.	CUP with STAND. 101	1951
1018.	WOOD WORK—DISH from China. 268	1951

1019.	BOWL with Lid of several pieces. 287	1951
1020.	ANTIMONY BOX of Sandalwood with embossed carving of religious scenes from Mysore. 118	1951
1021.	CASE or BOX of Black colour ; carved. 271.	1951
1022.	BOOK STAND. 499	1951
1023.	Coloured and painted circular CASES.	
1024.	117 & 316 (2)	1951
1025	Small TRAY carved with pair of goose 317	1951
1026-	SPOONS and FORKS.	
1029.	250(4)	1951
1030.	FORK with floral designs carved on it. 320	1951
1031-	Black circular RODS carved with animals.	
1034.	299(4)	1951
1035-	ANTIMONY CASES with cover.	
1036.	273(2)	1951
1037.	Small CASE with fine floral paintings. 220	1951
1038.	BOOK COVER with fine floral paintings. 289.	1951
1039.	Hexagonal CHOWKI, finely carved. 307	1951
1040.	Square CHOWKI with Chess lay-out. 78	1944
1041-	WALL-FRAMES finely carved ; 8 in number.	
1048.		1949

- 1049- Papier-Maché VASES with fine paintings on
 1050. lacquer work from Kashmere. 1951
 337(2)
- 1051- CHARTS, 12 in number, showing different Indus-
 1062. tries, e.g., Paper, Silk, Pottery, Pencil, Nib-making
 of Great Britain. 1949
 172, 175-81 & 184-87.

CHILDREN SECTION

1063-1070.	BRASS TOYS representing Gaṇeśa, Brahmā Vishṇu, Maheśa, Durgā and Hanumān and Vasudeva-cup.	
	751-58-64 & 179-80/K (8)	1951
1071-1073.	Incense Burner.	
	201/K (3)	1951
1074-1076.	Christian Deities.	
	176/K (3)	1951
1077-1079.	Hindu Musicians	
	172/K (3)	1951
1080-1081.	English Dance Depictions.	
	186/K (2)	1951
1082-1094.	European Bands-men with musical instruments.	
	176/K (13)	1951
1095-1096.	Woman Plying Wheel (<i>Charkha</i>).	
	756 & 189/K (2)	1951
1097	Ploughman with two Bullocks.	
	184/K	1951
1098-1099.	Water-men with Carriers.	
	755 & 757	1951
1100.	Camel with Dholā-Mārū on its back.	
	397	1951
1101.	African <i>Havshi</i> of Bronze.	
	192/K	1951
1102.	Elephant with Howdah.	
	86	1951
1103.	Inkpot Stand with Coiled Snake.	1951
1104.	Inkpot Stand with European Lady.	1951
1105.	European Deity holding book of Bronze.	
	232/K	1951

1106.	Standing European Deity of Bronze 190/K	1951
1107.	Brass Bell. 513	1948
1108.	Large Fish. 184/K	1951
1109-	Horses of different sizes.	
1114.	174/K (6)	1951
1115-	Elephants with Howdah.	
1116.	210/K (2)	1951
1117-	Three Lions.	
1119.	372, 391 & 177/K	1951
1120.	Deer of different sizes, 4 in number. 390, 393, 395 & 181/K	1951
1121-	Kangaru Pair.	
1122.	394 & 396	1946
1123.	Fighting <i>Mendhās</i> . 368	1946
1124-	Two Yaks.	
1125.	367	1946
1126.	Dogs fighting, made of bronze. 188/K	1946
1127-	Two Scorpions.	
1128.	369 & 371	1946
1129.	Four Peacocks.	
1132.	387-89 & 392.	1946
1133-	Pair of Cranes.	
1134.	452-53	1946
1135-	Pair of Hen.	
1136.	398 & 194/K	1951
1137.	Dancing Pigeon. 175/K	1951

1138.	Bird on Pedestal	
	373	1946
1139.	Camel of German Silver	1951
1140-	<i>STONE TOYS</i> —Two Elephants of Marble	
1141.	and Slate.	
	210/K	1951
1142.	Cow with Calf and Rādhā-Kṛishṇa.	
	213/K	1951
1143-	Dogs of Marble and slate.	
1144.	211/K	1951
1145-	<i>SANDALWOOD TOYS</i> —depicting Kṛishṇa-	
1147.	<i>Līlā</i> .	
	473, 482 & 490	1948
1148-	Elephants of different sizes of black wood.	
1153.	474-79 (6)	1948
1154-	Elephants of Coconut.	
1155.	471-72 (2)	1948
1156-	Two Bullocks.	
1157.	486-87	1948
1158.	Cow.	
	481	1948
1159.	Raindeer.	
	385	1946
1160-	<i>PAPIER-MACHÉ TOYS</i> —Different types of	
1174.	animals	
	877(15)	1953
1175.	Sitting Lion.	
	374	1946
1176.	Elephant.	
	355	1946
1177-	Birds of different types.	
1182.	877(6)	1953
1183-	Pigeons etc.	
1187.	735-39(5)	1953

1188-	Birds of different types.	
1193.	278/K & 281 (6)	1951
1194-	Two Pairs of Dolls.	
1195.	592-93	1949
1196.	Pair of Crane.	
	354	1946
1197.	Boat House.	
	777	1953
1198.	<i>Gyan Chawsar</i> embroidered on cotton in silk thread	
	308	1951
1199-	Papier Maché Vegetables.	
1220.	200 & 203 (22)	1951
1221-	FRUITS—Mangoes, Bananas, Melons etc.	
1254.	(34)	1951
1255-	Dry FRUITS etc., 6 in number.	
1260.		
1261-	SOAP-STONE—Models of Taj Mahal, Baradari.	
1263.	407 & 163/K (3)	1946
1264-	Soap-Stone—Flower and Lion.	
1265.	401/K & 403/K (2)	1946
1266.	Black Marble SNAKE.	
	775	1953
1267.	Glass hanging BOWL.	
	309/K	1946
1268-	Beads Hangers.	
1271.	242/K (4)	1946
1272.	Wooden <i>GILI-DANDA</i> for children play.	1953
1273.	Fine perforated carving on conch.	
	235/K	1949
1274-	Glass Bottles with toys inserted inside.	
1280.	741-44 & 251/K (7)	1953
1281-	Ivory Chess with cloth board.	
1282.	503-4	1944

1283.	Playing Cards, circular. 794	1944
1284.	<i>Atharah-Goti</i> an Indian Play Sheet. 305	1944
1285-	<i>Chaupar Bichhat</i> of Beads, <i>Pot</i> work.	
1287.	304 (3)	1944
1288-	Two Sets of ivory dice.	
1289.	795	1944
1290-	<i>CONCH SHELLS & COWRIES</i> —Large conch.	
1291.	228/K (2)	1944
1292-	Conches of different kinds & sizes.	
1307.	770 (16)	1953
1308-	Cowries in garland.	
1311.	771-73	1953
1312-	Wooden Toy Aeroplanes.	
1313.	292(2)	1946
1314.	Small Table-Fan driven by battery. 252/K	1946
1315-	Musical Instruments (<i>Jaltarang</i>)	
1316.	155/K (2)	1946
1317.	Gramophone—Electric driven. 156/K	1946
1318.	Fountain—Electric driven. 317/K	1946
1319.	Chirping Bird in a cage. 253/K	1946
1320.	Wooden Balanced Human Figure.	1960
1321.	Model of <i>Gir-raj</i> Temple.	1944
1322.	Rock Salt. 616	1944
1323.	Cut-Glass. 961	1956

1324.	Bottle with letters written inside. 962	1956
1325.	SĪTĀJĪ and RĀMA & RĀVAṆA with magnet connection.	1944
1326.	Monkey with moving head.	1944
1327.	FLEXIBLE STONE PIECE.	1944
1328.	<i>PROGRESS OF LIGHT</i> —Lantern of kerosene oil.	1951
1329.	German Lantern.	1951
1330.	Lamp in Elephant Leg. 602	1951
1331.	Japanese Lantern. 465	1951
1332.	Hanging Lanterns.	
1333.	460 (2)	1951
1334.	Wax Lamp.	1951
1335.	Carbite Lamp. 461	1951
1336.	Gas Lamp. 806	1951
1337.	Electric Lamps on Brass Lions Hood.	
1338.	471 (2)	1951
1339.	Electric Lamps on Stands.	
1340.	472 (2)	1951
1341.	Perforated Brass Hanging Lamps of Persian type ; four in number.	1951
1345.	<i>ZOOLOGICAL EXHIBITS</i> —Crocodile. 8' long 548	1946
1346.	Crocodile. 5'9" long 549	1946

1347.	Baby Crocodile.	
	362	1951
1348.	Long Mouth of <i>Gharial</i> (Alligator).	
	550	1951
1349.	Mouth of <i>Gharial</i> (Crocodile).	
	551	1951
1350.	Lion's Cub.	
	519	1946
1351.	Fox Head.	
	541	1946
1352.	Elephant's JAW.	
	1169	1960
1353.	Box & Teapoy in Elephant Leg.	1951
1354.	Mountaineer Snake (<i>Sillu Sanp</i>).	
	361	1946
1355.	<i>Usar-Sande</i> .	
	516 (3)	1946
1356.	Two Boar Babies.	
1357.		1946
1358.	African Monkey.	
	364	1946
1359.	Wolf.	
	365	1946
1360.	<i>Van Manush</i> .	
	360	1946
1361.	<i>Ood-Bilau</i> .	
	363	1951
1362.	Coiled Cobra.	1951
1363.	Fish Teeth.	
1364.	344 & 348	1951
1365.	Fish Horn.	
	382	1951

1366.	Jackal Head and Squirrel.	
	520	1951
1367.	Tiger's Head.	
	539	1951
1368.	Panthers' Heads.	
1369.	542 & 544	1951
1370.	Leopards' Heads.	
1371.	546-47	1951
1372.	Heads and Skins of Raindeers, Deer etc.	
1398.	27 in number	1951
1399.	Buffalo Horn. 4½' long	
	558	1951
1400.	EGGS of different kinds of Birds, three sets.	
1402.	356-58	1951
1403.	Human Back Bones.	
	582	1951
1404.	Human Teeth.	
	379	1951
1405.	Australian Sheep Skin with Wool.	
	943	1949
1406.	Life-Sketch of Bed Bugs.	
	911	1949
1407.	Life-Sketch of Frog.	
	910	1949
1408.	Life-Sketch of Mosquito.	
	909	1949
1409.	Fangs of Cobra.	
1410.	379	1951
1411.	Stuffed Birds in Flower Vases.	
1412.	324 (3)	1947
1413.	Map of Mankind.	
	913	1949

1414.	Physiology Charts. 908	1949
1415-	Miscellaneous Used Postage Stamps.	
1418.	168-71 & 944 (4)	1956
1419.	Coloured Drawing of Railway Engine. 595	1951
1420.	Photo depicting Tibbet Yaks. 389	1951
1421.	Embroidery Specimen depicting Maharaja Kishan Singh shown in Car. 600	1946
1422.	Fine Embroidery in Wool depicting Flower Pot, done by a Parsee Lady.	1946
1423.	Marble of Statuette of Mahatma Gandhi. 903	1949
1424.	Plaster-cast Bust of Mahatma Gandhi. 878	1949
1425.	Plaster-cast Bust of Netaji Subhas Bose. 879	1949
1426.	Plaster-cast Buddha. 1197	1960
1427.	Plaster-cast Mendicant. 1198	1960
1428.	Painting on Silk of Mahatma Gandhi. 912	1949
1429.	Painting of Mahatma Gandhi. 890	1949
1430-	Oil Paintings on Glass Sheets.	
1432.	869 (3)	1951

MISCELLANEOUS SECTION

- | | | |
|----------------|--|------|
| 1433. | Enlarged Photo-Paintings of Rulers of Bharatpur—
Thakur Churaman., up to 1722 A.D.
1060 | 1960 |
| 1434. | Raja Badan Singh. 1722-55 A.D.
900 | 1949 |
| 1435. | Maharaja Surajmal. 1755-63 A.D. | 1949 |
| 1436. | Maharaja Jawahar Singh. 1763-65 A.D. | 1949 |
| 1437. | Maharaja Rattan Singh. 1765-69 A.D. | 1949 |
| 1438. | Maharaja Kehri Singh. 1769-77 A.D. | 1949 |
| 1439. | Maharaja Ranjeet Singh. 1777-1805 A.D. | 1949 |
| 1440. | Maharaja Randhir Singh. 1805-23 A.D. | 1949 |
| 1441. | Maharaja Baldeo Singh. 1823-25 A.D. | 1949 |
| 1442. | Maharaja Balwant Singh. 1825-53 A.D. | 1949 |
| 1443. | Maharaja Jaswant Singh. 1853-93 A.D. | 1949 |
| 1444. | Maharaja Ram Singh. 1893-1900 A.D. | 1949 |
| 1445. | Maharaja Kishan Singh. 1900-29 A.D. | 1949 |
| 1446. | Maharaja Sawai Brijendra Singh. 1929-47 A.D.
896 | 1949 |
| 1447. | Portrait of Maharaja Balwant Singh.
588 | 1951 |
| 1448. | Oil Painting of Maharaja Balwant Singh
with Courtiers.
587 | 1951 |
| 1449-
1468. | PAINTINGS of BHARATPUR SCHOOL,
depicting incarnations of Vishnu and Krishna-līlā
Scenes.
1072-91 (20) | 1959 |
| 1469. | PAINTINGS ALBUM.
906 | 1949 |
| 1470-
1478. | PAINTINGS on Peepal Leaves.
859-67 (9) | 1946 |

1479-	PAINTINGS, Alwar School.	
1484.	1120 (6)	1959
1485.	PAINTINGS, Jaipur School. Maharaja Sawai Pratap Singh.	
	971	1957
1486.	SHRI KṚISHṆA AND <i>GOPIS</i> .	
	948	1957
1487-	UNFINISHED PAINTINGS of Rajas etc.	
1502.	973 (16)	1949
1503-	HUNTING SCENES.	
1504.	1039 & 1041 (2)	1960
1505.	KṚISHṆA PLAYING HOLI.	
	1137	1960
1506.	KṚISHṆA lifting Goverdhana.	
	1139	1960
1507.	KṚISHṆA- <i>LILĀ</i> Scenes.	
	1138	1960
1508.	SHRI RĀDHĀ-KṚISHṆA.	
	1140	1960
1509.	RAJPUT LADY enjoying Hookah.	
	989	1949
1510.	SARASWATĪ drawn by Nathulal Artist.	
	1148	1960
1511.	LAṆKĀ-Burning.	
	1147	1960
1512.	ELEPHANTS-FIGHT.	
	1143	1960
1513.	A DAMSEL.	
	971	1957
1514.	SHILA DEVI of Amber.	
	1144	1960
1515.	MOTHER-GODDESS.	
	1141	1960

1516.	LADY being dressed.	
	990	1949
1517.	MAHARAJA PRATAP SINGH AND A DARBARI.	
	988	1949
1518.	<i>KISHANGARH SCHOOL</i> —Raja Nagridasa	
1519.	and Banithani.	
	952	1949
1520.	<i>JODHPUR SCHOOL</i> —Raja and Rani.	
1521.	986-987	1949
1522.	MAHARAJA JASWANT SINGH on Horse- back.	
	1120	1960
1523.	MAHARAJ CHHATRASAL.	
	952	1949
1524.	MAHARAJA MAN SINGH with attendants.	
1526.	952	1949
1527.	<i>UDAIPUR SCHOOL</i> —Rana Hamir Singh.	
	945	1949
1528.	MAHARANA BHIM SINGH.	
	947	1949
1529.	<i>NATHDWARA SCHOOL</i> —Rādhā-Krishṇa.	
	946	1949
1530.	DAMSELS.	
	1040	1960
1531.	<i>BUNDI SCHOOL</i> —Lovers on Horseback.	
	971	1949
1532.	LOVE SCENE.	1949
1533.	NOOR-JAHAN.	
	950	1949
1534.	RAJA AND RANI.	
	971	1949
1535.	RĀGA-RĀGINĪS, Khambat, Śrī Rāga & Todi.	
	971	1949

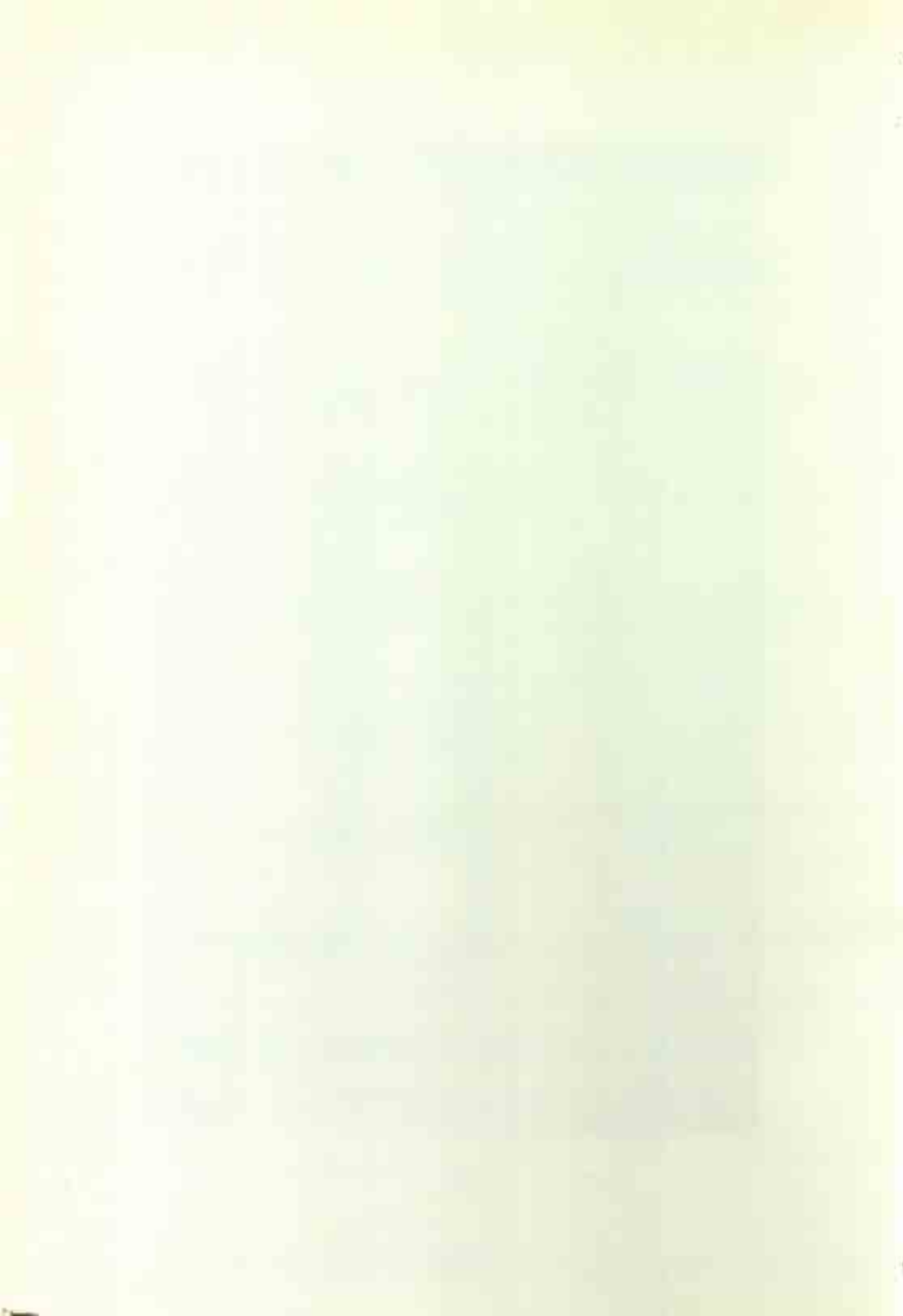
1936. LADY dressing hairs.
901 1949
1537. LADIES in apartment with a blind messenger.
971 1949
1538. LADY enjoying music. 1949
1539. RANI LAKSHMI BAI of Jhansi—
Bundelkhand School.
1146 1960
1540. VISHṆU AND LAKSHMĪ—Kangra School.
971 1949
1541. MOHAMMAD SHAH with Vazir—
Mughal School.
949 1949
1542. BADSHAH AND BEGUM.
951 1949
1543. THREE SITTING LADIES. 1957
1544. PAINTING on Ivory, Jahāngīr with Courtiers.
959 1949
1545. ŚIVA-PĀRVATĪ AND GAṆEŚJĪ.
972 1949
1546. KRISHṆA MAHĀRĀS-LĪLĀ Scene. 1944
1547. JAIN TĪRTHĀNKARAS—Round Plaque.
1142 1960
1548. KRISHṆA Playing Holi.
1145 1960
- 1949-1576. PAINTINGS on Mica depicting religious
scenes and some occupations.—Deccan School.
1092-1119 1960
- 1577- JAPANESE LADY AND GENT.
1578. 1120 1960
1579. MANUSCRIPTS—*Sahaj Sanehi Samvat 1667*
(A.D. 1610) by Poet Mohan with his painting.
905 1949

1880.	SUJAN BILAS—Samvat 1807 (A.D. 1750).	
	907	1949
1581.	BHRAMAR GEET, Samvat 1890 (A.D. 1833).	
	1012	1956
1582.	SHRI RĀM CHARIT MĀNAS— Uttara Kāṇḍa, Samvat 1908 (A.D. 1851)	
	1011	1956
1583.	PUTRA-UTSAVA, Maharaja Balwant Singh, Samvat 1908 (A.D. 1851).	
	1013	1956
1584.	BARVE RĀMĀYAṆA, TULSI KRIT, Samvat 1917 (A.D. 1860).	
	1009	1956
1585.	ADHYĀTMA PRAKĀSHA.	
	1010	1956
1586.	GOPĀL SAHASRA NĀMA.	
	1014	1956
1587.	RĀGA-RĀGINĪS.	
	1015	1956
1588.	MSS. on Tar-Patra, 17 in number.	
	498	1946
1589.	QURAN, printed on Scrolls.	
	895	1949
1590.	BUDDHA's life-sketch in Picture Post-cards.	
	804	1949
1591- 1608.	EIGHTEEN coloured miniature groups of Maharajas of the Covenanting States of Rajasthan.	
	1042-59	1959
1609.	NATIONAL FLAGS of Some countries presented by Dr. Nathi Lal Gupta.	
	999	1958
1610.	DYNASTIC SKETCH of the Bharatpur Rulers.	
		1949

1611.	STATE COAT OF ARMS.	
	892	1949
1612-	STATE FLAGS on Silk, embroidered with	
1615.	Eulogy to Shri Lakshmanji and Shri Gokulendra.	1949
1616-	REVENUE STAMP BLOCKS of Bharatpur	
1617.	and Dholpur States.	
	983	1949
1618-	NARENDRA MANDAL, Delhi Photo Groups	
1619.	(A.D. 1941 & 1943).	1949
1620.	TIGER HUNTING SCENE with	
	H.H. Bharatpur and Maharaj Kumar Danta. 1925.	
	381	1949
1621-	HEAD-DRESSES (Pagaris) of Rajasthan.	
1625.	1170-74	1960
1626.	LARGE IRON KETTLE—DRUM.	
	918	1944
1627-	PAINTINGS of Maharajas of Bharatpur.	
1633.	377	1958
1634.	CATALOGUE of different ancient cloth specimens.	
	899	1949
1635.	MAP OF INDIA showing Museums.	1961



Standing Human figure. Mauryan Period.





Ek-Mukhi Siva Lingam, Sunga Period.





Dwarfish Figure (Kumbha Rashi?) Sunga Period.



Bodhi Sattva, Kushan Period.



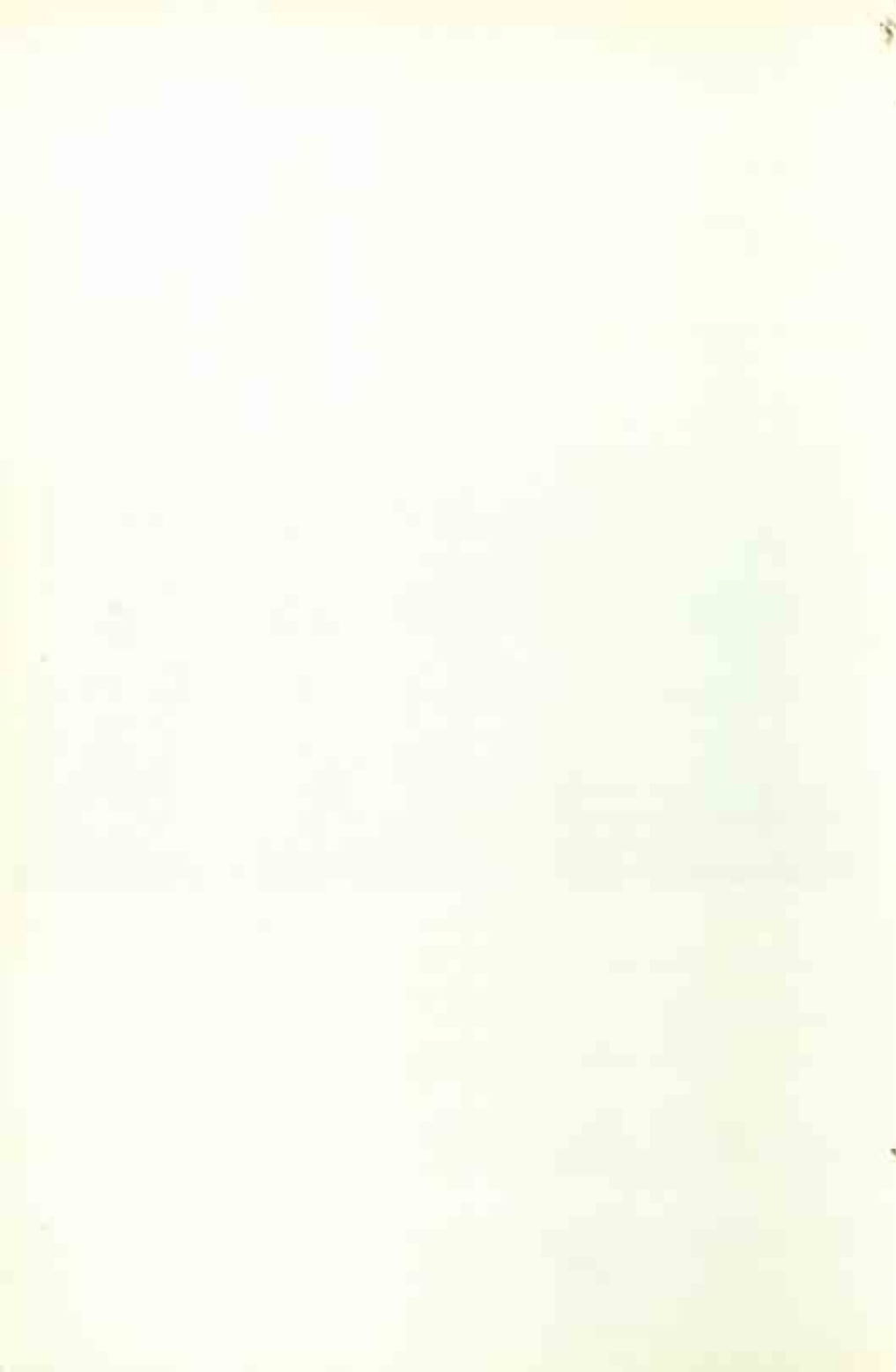
Vishnu. Halaina, 12th Century A.D.



Parikar. Brahmabad, 17th Century A.D.



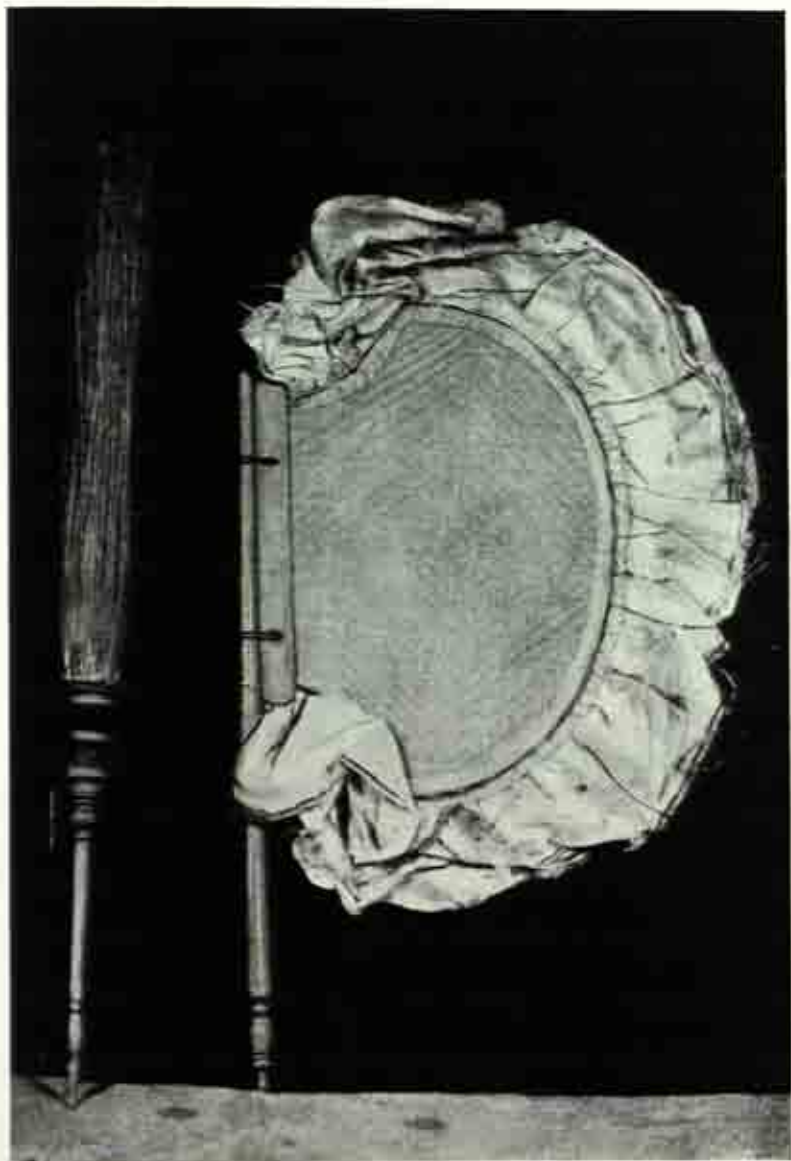
Ḍholā Māru. Dholpur, 17th Century A.D.



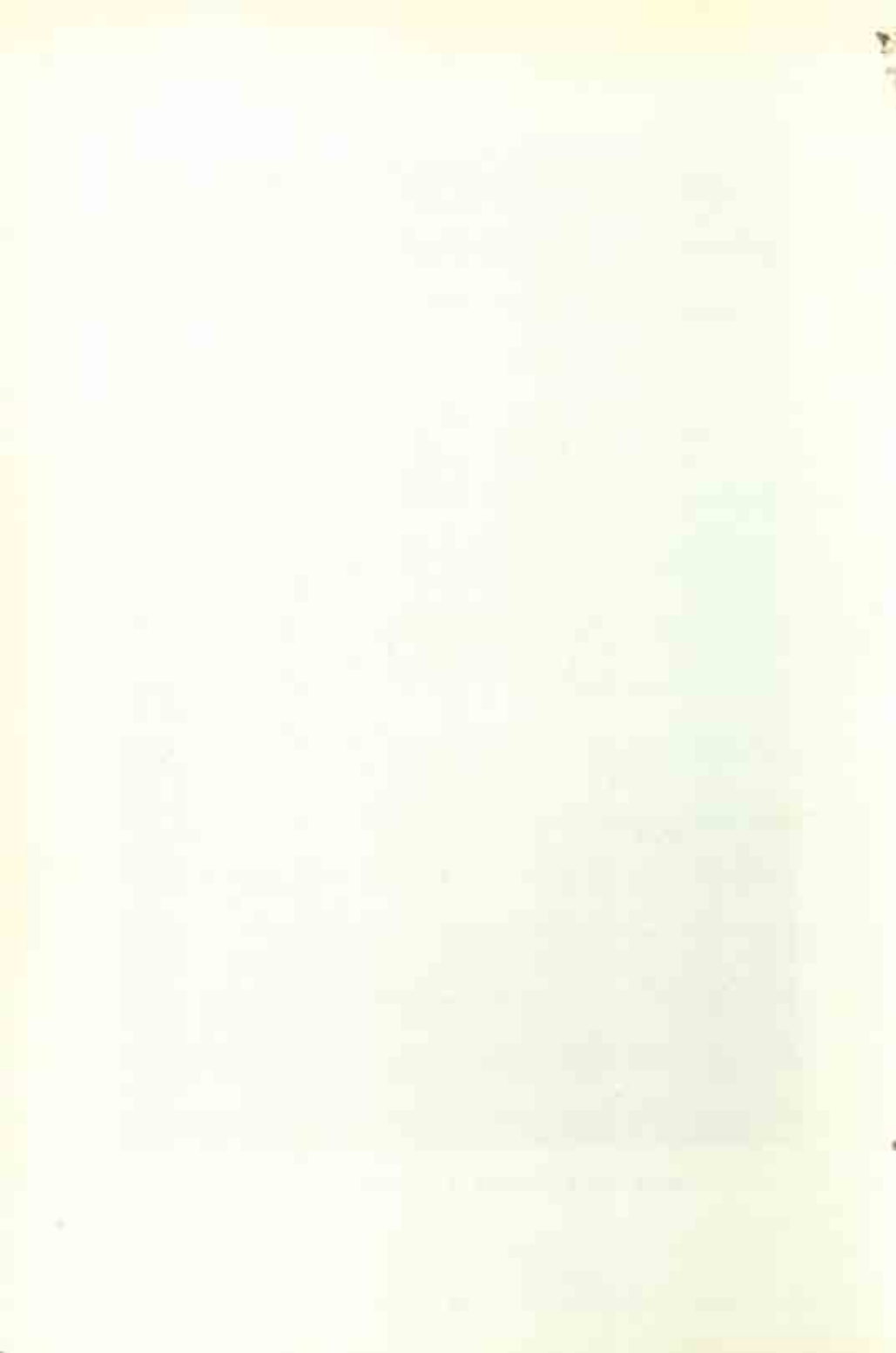


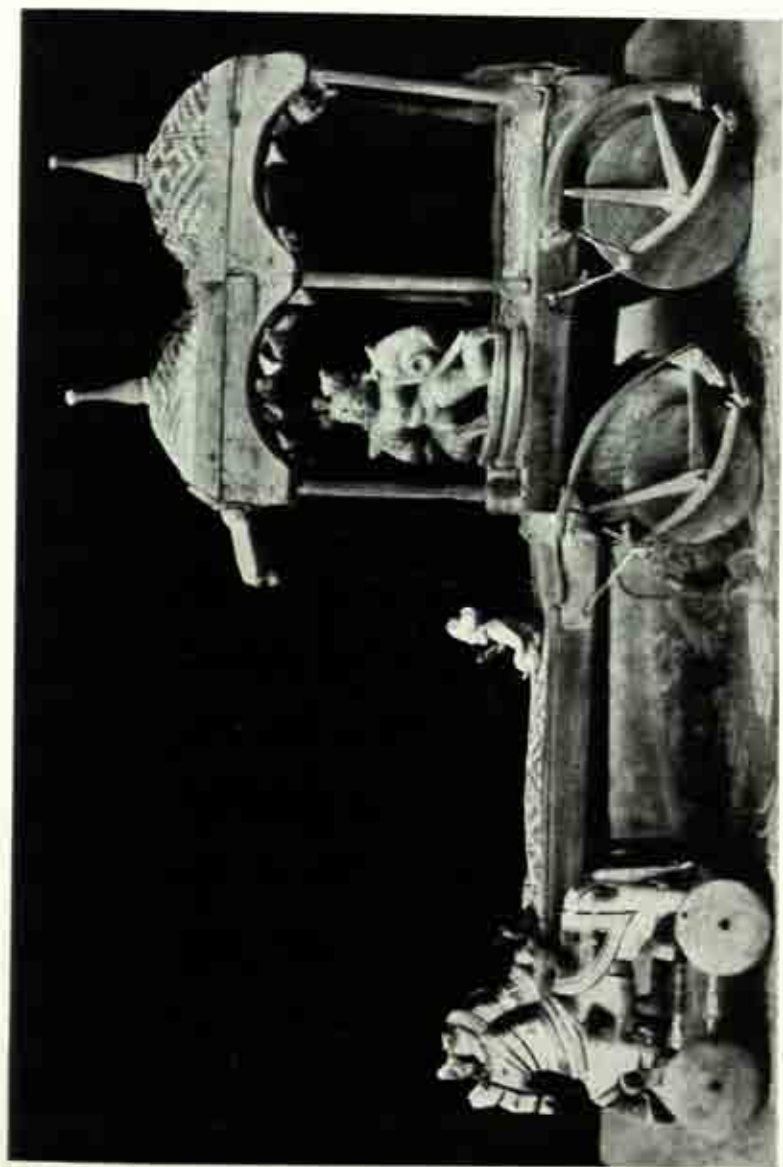
Painting—Vāman Avatar. Bharatpur, 18th cent. A.D.



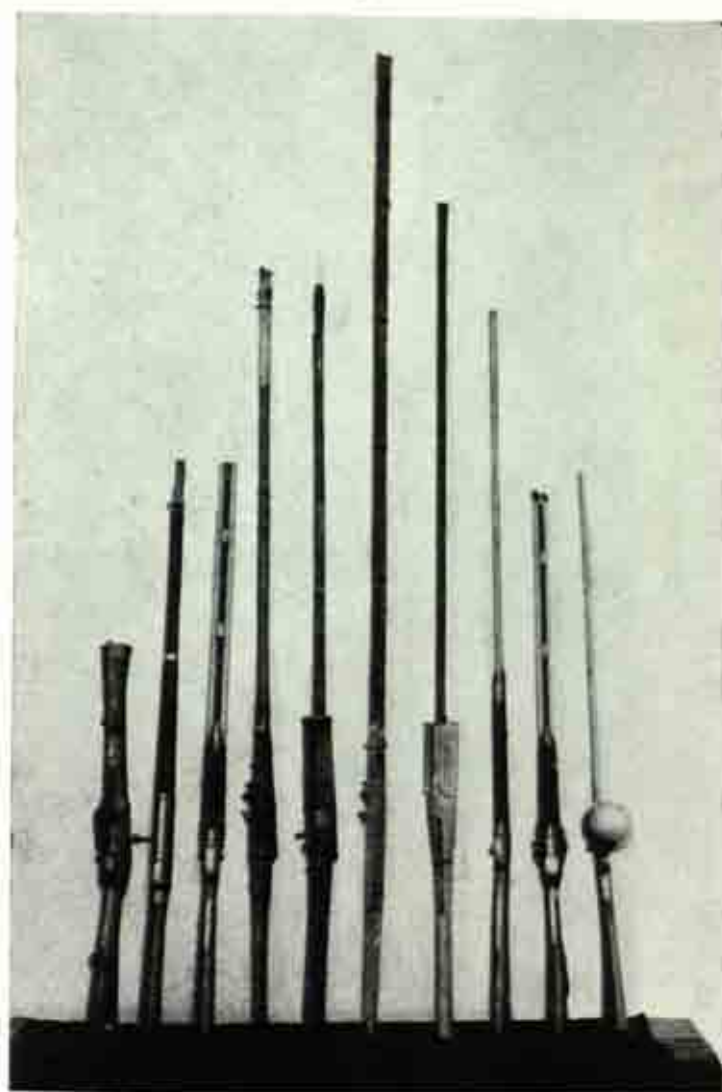


Hand Fans & Fly Whisk of Sandalwood. Local Art.

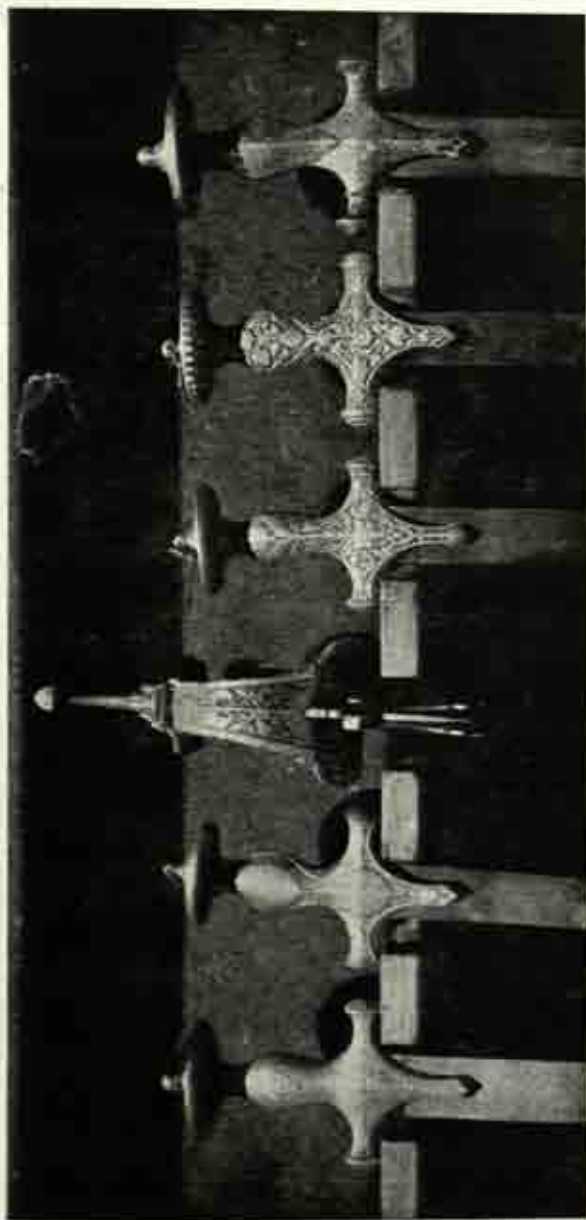




Sandalwood Chariot.

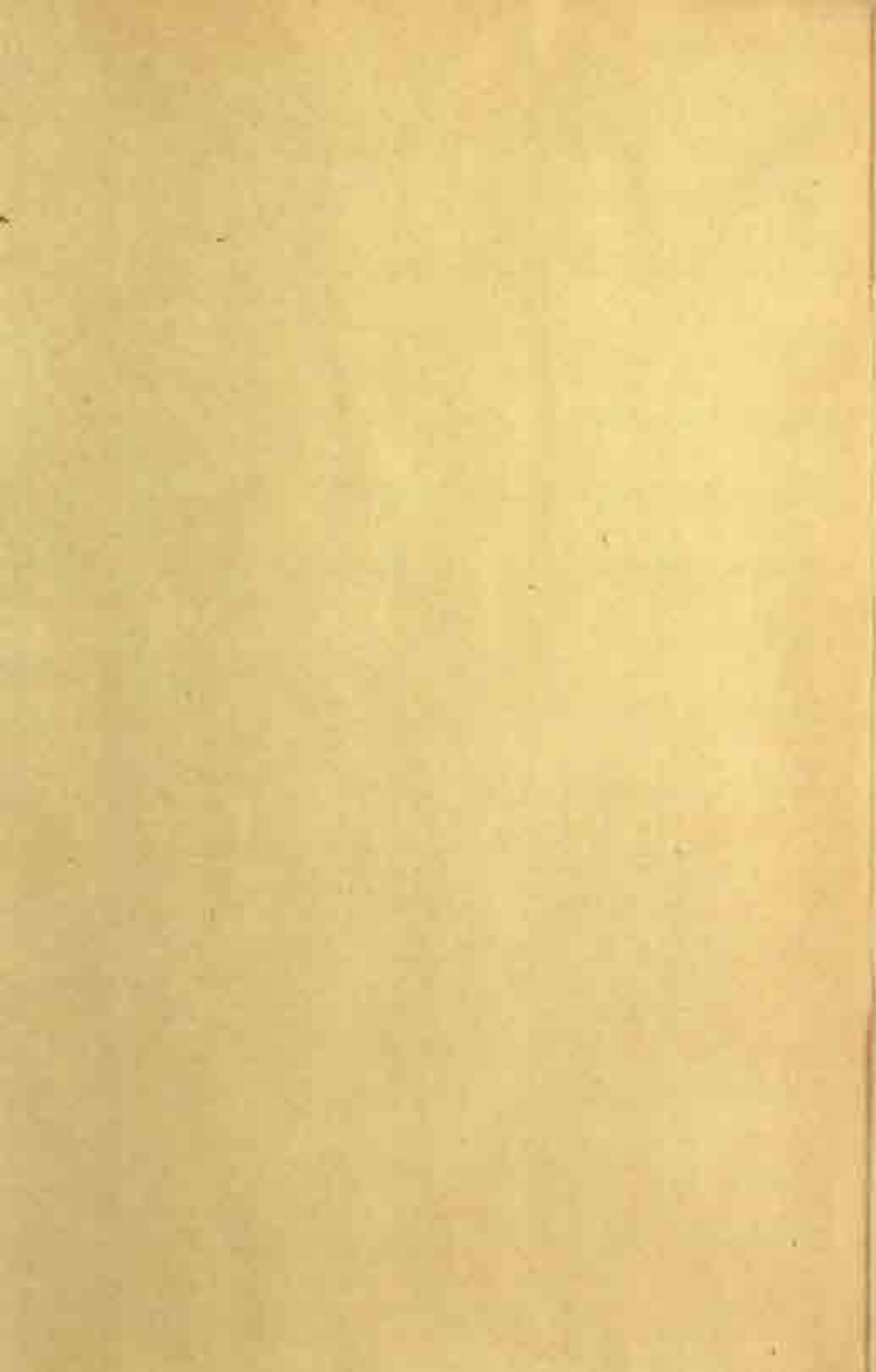


Guns of different types.

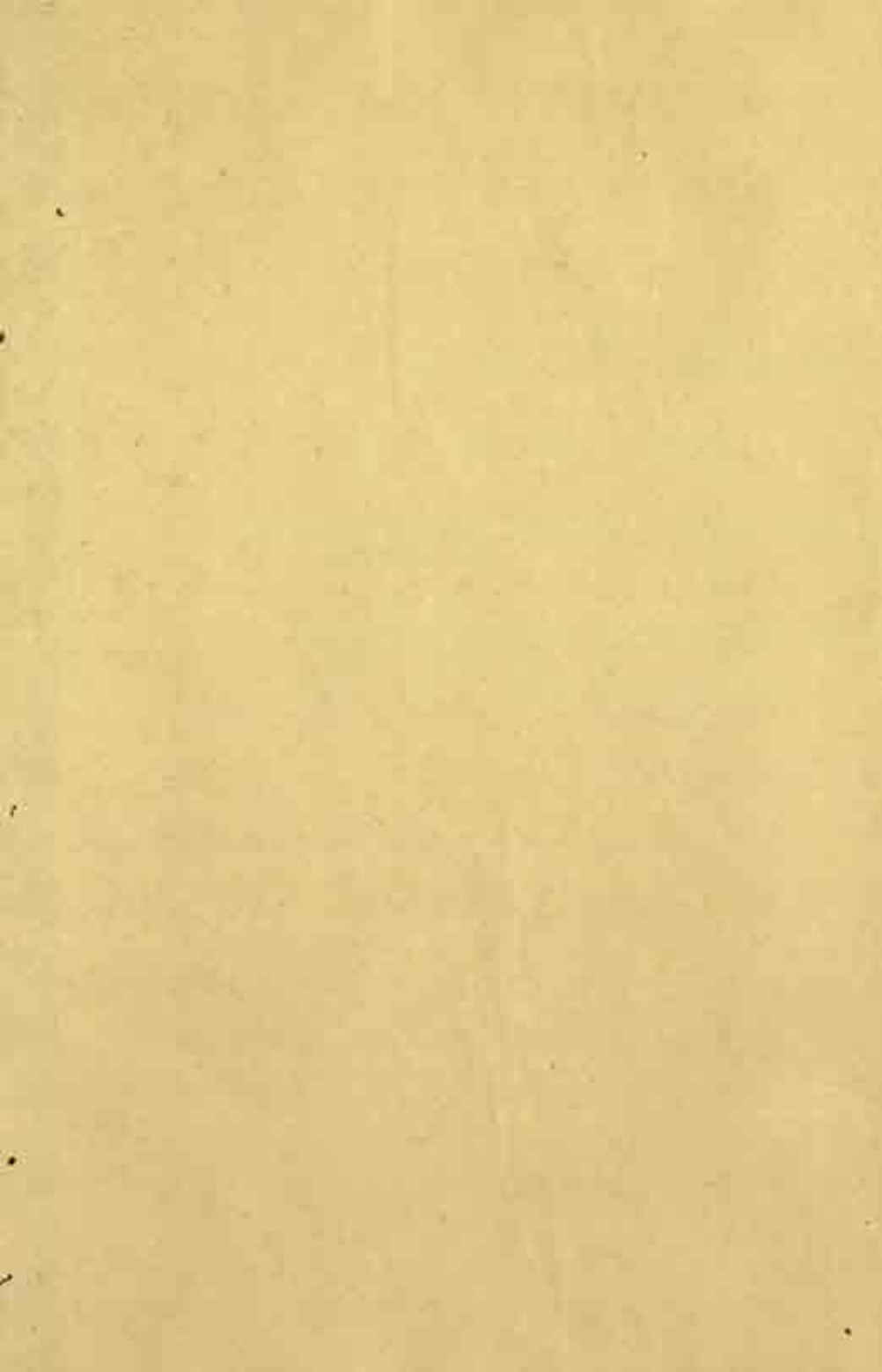


Sword Hilts with Gold Koft, Zarnishan, Jahmishan Work.









Call
7/3/75

Central Archaeological Library,

NEW DELHI,

36454

Call No.

069.53095435

S. M. B.

Author—

Catalogue & Guide to

Title—

State Museum, Bharatpur
(Rajasthan)

"A book that is shut is but a block"

CENTRAL ARCHAEOLOGICAL LIBRARY

GOVT. OF INDIA

Department of Archaeology

NEW DELHI

Please help us to keep the book
clean and moving.