

GOVERNMENT OF INDIA
ARCHÆOLOGICAL SURVEY OF INDIA
ARCHÆOLOGICAL
LIBRARY

ACCESSION NO. 36460

CALL No. 069.53095435
G. C. M. J.

D.G.A. 79



CATALOGUE

260

GOVERNMENT CENTRAL MUSEUM, JAIPUR

PART I

(Metal Objects)

36460



069.53095435

G.C.M.J.



1960-61

Published by

DEPARTMENT OF ARCHAEOLOGY & MUSEUMS,
GOVERNMENT OF RAJASTHAN, JAIPUR

Museum Timings :

Summer 7-30 to 10-30 a.m. 3-30 to 6-00 p.m.

Winter 10 a.m. to 4-30 p.m.

Closed on Fridays & Gazetted Holidays.

1st Edition: 1961

1000 Copies

CENTRAL ARCHAEOLOGICAL
LIBRARY, NEW DELHI.

Acc. No. 36460

Date 16-11-62

Call No. 069.53095435

G.C.M.J.

CONTENTS

| | Pages |
|-----------------------------|-----------|
| Introduction | 1 — 4 |
| Brass Work | 5 — 76 |
| Copper Work | 77 — 89 |
| Silver Work | 90 — 102 |
| Enamel Work | 103 — 110 |
| Bidri Work | 111 — 113 |
| Damascening Work | 114 — 119 |
| Miscellaneous Metal Objects | 120 — 128 |
| Art Plates | |

INTRODUCTION

THE Museum in Jaipur was started with a view to bring to light various industrial arts practised by the artisans of the former Jaipur State. The building of the museum was designed in Indo-Persian style. The collections made in an exhibition held in 1883 served as a nucleus for the museum which was lodged in the present building in 1886. This museum was inaugurated by Sir Edward Bradford, the then agent to the Governor-General. The museum came to be known as the Albert Hall in honour of the Prince of Wales, who had laid the foundation stone in the year 1876. The work of building construction was started in the time of Maharaja Ram Singh but the building was completed in the time of Maharaja Madho Singh under the supervision of the famous Engineer Col. Jacob.

The collection originally comprised of the exhibits of educational importance and was based on Economics, History, Science, Culture, Zoology and Arts.

Col. Hendley was the first Hon. Secretary of the museum. His conscientious efforts deserve special admiration. His main object was to make this museum as perfect type of Museum, housing exhibits of foreign and local character for a comparative study of crafts of both local and international importance. Primarily the museum was designed to be an art and industrial museum. Most of the things in the collection of the museum belong to the time of Col. Hendley under whose advice articles were manufactured at the school of Arts, Jaipur. Varieties in Brass work were introduced and new crafts like enamel, damascening, pottery, etc. attracted the attention of the experts abroad and many good specimens were produced.

An attempt has been made here to present before the readers a catalogue of museum exhibits bearing on metal craftsmanship — brass work — chased, embossed, hammered etc. and also fine works like those of enamel, bidri, filigree,

damascening etc. This is only the 1st part of the catalogue. The other part of the catalogue shall follow in due course. The author would be failing in his duty if he does not point out here that the present catalogue does not deal with only those exhibits of metal section which are on display but also those which are now consigned to godowns for want of space in craft section.

BRASS WORK :

A short note on various types of metal works lodged in the museum is given below :—

Sacred and domestic utensils in brass and copper are made all over India and are usually of the same pattern as we find represented in the oldest Buddhist sculptures and cave paintings. These metal vessels in a native Indian household have the same place as porcelain, glass and silver do in an European family. Hindus even now use brass vessels and Mohammadans copper. Various types of workmanship such as repoussé, chasing, piercing, hammering and engraving are done on articles like drinking cups, *loṭās*, cooking pots, lamps, spice-boxes, *pāṇḍāns*, bells, candelbras, fountains, salvers, caskets, ink-stands idols, bed-chains, all of which are turned out in brass, copper, silver, gold, bronze etc. All articles of household use are made for local consumption in the north of the country at Amritsar, Ambala, Ludhiana, Jalandhar, etc.

Jaipur is famous for its brass work all over the world. Much of fine brass work is still carried on by the artisans but is done in most cases at the request of the local and foreign curio dealers. Jaipur work displays on it Persian patterns. This was probably due to the fact that the Jaipur rulers were closely connected with the Mughal emperors. At Moradabad, tin is soldered on brass, filling the ground portion with a blackened composition of lac. Banaras is famous for the excellence of its cast and sculptured mythological images in brass, copper, gold and silver. In Bengal, places like Burdwan, Chittagong etc. turn out metal work. Nasik, Ahmedabad and Poona in the west, have always been famous for their copper and brass works. Nagpur is distinguished by its traditional forms in brass. Very good

brass work is done at Nellore but the work done at Madura and Tanjore in south is superior to all and is also the finest in India.

DAMASCENING WORK :

This is a collective name derived from the place of practice of this art of workmanship — Damascus. Two types of damascening work are on display in the museum. They are Tahinishan and Koft. In Tahinishan or true damascening, gold wire is forced into deep channels cut in steel. In koft work gold wire or even leaf, are only made to adhere to the ground metal by means of slight grooves with filling and polishing. Bundi, Alwar and Udaipur have served as centres for this type of work, which is found executed mostly on weapons.

ENAMELLING WORK :

Sir George Birdwood has described the enamel work of Jaipur as the master art of the world. One type of enamel work is known as champleve. In this work the ground is excavated into little pits or depression for the reception of enamel colours. These colours are oxides of metal and are made to adhere to gold by heat. The outlines are formed by the gold of the plate and the whole piece is carefully polished or burnished by agates after the oxides are fused. The enamel then becomes strong and does not crack and fly off, as in many European examples of art. As the colours for the most part adhere with different degrees of heat they are applied separately and those which melt at the lowest temperature are put on last of all. The Jaipur work is chiefly noted for the fineness and the beauty of its red hues. Sixty years back the artists were all Sikhs. They practised their art, in the first place, at Lahore. There are still artists in Jaipur who make articles of very fine quality. Partapgarh and Nathdwara in Mewar are also centres of this art. Partapgarh is notable only for the work on glass.

BIDRI WORK :

There are four seats of Bidri manufacture. These are Lucknow, Purniah, Bidar and Moorshidabad. The mode of manufacture is very nearly the same at all the places. The manufacture of Bidri work is carried on under a system

of division of labour. The different processes are generally performed by three classes of people, viz., the moulder, the carver and the inlayer. The moulder prepares the alloyed metal casts of the vessels and turns them into proper shapes by a lathe. The carver engraves the pattern on the surface of the vessel and the inlayer designs the patterns, inlays the ornament of gold and silver and finally colours and polishes the object. In Bidri the metal ground is a compound of copper, lead and tin, made black on the surface by the use of the solution of amoniac saltpetre, salt and blue vitriol. Then the required pattern is engraved over the article and inlaid with silver. Finally, the ground of the vessels is blackened and its silver ornamentations scoured to the brightest polish.

SILVER WORK :

In Rajasthan, Jaipur and Bikaner are famous for the production of silver objects of domestic use. The designs on the objects are either engraved or embossed. Kashmir in north, Cutch in west, Mysore and Trichinopoly in south are noted centres for the manufacture of silver objects.

Burmah and Kandi in Ceylon have Buddhist motive represented on their objects.

The metal section of the Central Museum, Jaipur, characteristic features of which have been dilated upon in the foregoing pages, is rich in both quality and quantity. A comparative study of the crafts of the same type in a single field leads one to feel how, in the midst of diversity in techniques, unity exists. A dispassionate study of crafts on a collection basis in the museum makes one feel that our present workmanship in certain fields shows a marked deterioration and it is high time that we should make efforts to revive some of the old and forgotten techniques as well as designs and meet the challenge of the critics that even in our popular regime, we are alive to our own responsibilities and are making headway in the field of cottage industries. Let modern craftsmen make use of the artistic crafts preserved and displayed in the museum and steal a march over the past record. Amen !

M. L. Gupta M.A.

Dip. in Fine Arts,
Curator.

BRASS WORK

Section—A

1. LIZARD VASE.
Size : Ht. 5½"
Rajasthani. Nineteenth Century. 1000
2. LIZARD VASE.
Size : Ht. 5½"
Rajasthani. Nineteenth Century. 2399
3. WATER VESSEL — with spout and a human head at the top 'Gangajal', used to hold the sacred water of the Ganges. Engraved.
Size : Ht. 6"
Rajasthani. Nineteenth Century. 1045
4. WATER POT — used by religious devotees; *kamandala*, Gourd shaped, with handle covered with engraved figures.
Size : Ht. 10"
Rajasthani, Nineteenth Century. 967
5. WATER VESSEL — *kamandala*, Gourd shaped with handles, brass Engraved.
Size : Ht. 17½"
Rajasthani. Nineteenth Century. 2388
6. COFFEE POT — Yarkand shaped; floral and mythological patterns Engraved.
Size : Ht. 13"
Rajasthani. Nineteenth Century. 2421
7. COFFEE POT — Bokhara pattern; the central ornament of the bowl is set with garnets. The whole surface is covered with engraved figures.
Size : Ht. 13"
Rajasthani. Nineteenth Century. 975
8. WATER JUG, fluted. Pattern taken from the Kamrakh or Averhoa Carambola fruit.
Size : Ht. 13"
Rajasthani. Nineteenth Century. 964
9. WATER VESSEL — *Chambu*. Engraved. Banaras. Reproduction at Jaipur.
Size : Ht. 10"
Rajasthani, Nineteenth Century. 2392
10. WATER VESSEL — *Chambu*. Engraved. Banaras. Reproduction at Jaipur.
Size : Ht. 10"
Rajasthani. Nineteenth Century. 991

11. INCENSE BURNER—Supported on three Garuḍas (the vulture king or vehicle of Viṣṇu). Āgḍān.
Size: Ht. $3\frac{1}{2}$ " Width. 5"
Rajasthani. Nineteenth Century. 2415
12. WATER POT—Used by religious devotees; *kamaṇḍala*; Gourd shaped with engraved figures.
Size: Ht. 10"
Rajasthani. Nineteenth Century. 2432
13. HASTAWA or WATER VESSEL—with spout.
Size: Ht. 13"
Rajasthani. 2266
14. TEA KETTLE—Supported by monkeys. European design.
Size: Ht. $11\frac{1}{2}$ "
Rajasthani. Nineteenth Century. 2429
15. INCENSE BURNER—Supported on three garuḍas.
Size: Ht. $3\frac{1}{2}$ " Wdth. 5"
Rajasthani. Nineteenth Century. 995
16. KIOSK—Model of a Chhatri or Cenotaph of a Rajput.
Size: Ht. 18"
Rajasthani. Nineteenth Century. 80
17. COFFEE POT—Engraved; Turkish design.
Size: Ht. $7\frac{1}{2}$ "
Rajasthani. Nineteenth Century. 2453
18. KIOSK—Model of a Chhatri or Cenotaph.
Size: Ht. $10\frac{1}{2}$ "
Rajasthani. Nineteenth Century. 993
19. BETEL BOX—*Pāṇḍāni*; perforated and engraved.
Size: $4\frac{1}{2}$ " \times $3\frac{1}{2}$ " and Ht. 2"
Rajasthani. Nineteenth Century. 1009
20. BETEL BOX—*Pāṇḍāni*; perforated and engraved.
Size: $4\frac{1}{2}$ " \times $3\frac{1}{2}$ " and Ht. $1\frac{3}{4}$ "
Rajasthani. Nineteenth Century. 1008
21. BOWL—for holding hot ashes for smokers; Āgḍān; supported by a Garuḍa, the vulture king on which Viṣṇu rides.
Size: Ht. $4\frac{1}{2}$ "
Rajasthani. Nineteenth Century. 969
22. BETEL BOX—*Pāṇḍān*; perforated and engraved.
Size: Ht. $2\frac{1}{2}$ "
Rajasthani. Nineteenth Century. 2407

23. EWER — with wide mouth and bowl with vertical grooves. Spout, elephant head-shaped with a long tube projecting from it; Nepal pattern.
Size: Ht. 11"
Rajasthani. Nineteenth Century. 2450
24. COFFEE POT — engraved; Turkish design.
Size: Ht. 10"
Rajasthani. Nineteenth Century. 2457
25. COFFEE POT — Bokhara pattern; engraved; set with garnets.
Size: Ht. 13½"
Rajasthani. Nineteenth Century. 2404
26. COFFEE POT — Bokhara pattern; engraved with mythological figures and set with garnets.
Size: Ht. 13½"
Rajasthani. Nineteenth Century. 2423
27. EWER — Wide mouth with vertical grooves; elephant head-shaped spout with a long tube projecting from it. Nepal pattern.
Size: Ht. 11½"
Rajasthani. Nineteenth Century. 2449
28. SEAT — for the *Lingam* God supported by Nandi, the sacred bull, vehicle of Śiva.
Size: Ht. 4"
Rajasthani — Nineteenth Century. 999
29. WATER VESSEL — Cockshaped; engraved.
Size: Ht. 9½"
Rajasthani. Nineteenth Century. 998
30. WATER VESSEL — Cockshaped; engraved.
Size: Ht. 9½"
Rajasthani. Nineteenth Century. 2235
31. TEA KETTLE — Tibetan Lhasa shape copied from a photograph of an original shown at the Lahore Exhibition 1886.
Size: Ht. 8"
Rajasthani. Nineteenth Century. 2436
32. VASE — with cover and grooved bowl. Two parrots on the neck. Engraved.
Size: Ht. 5½"
Rajasthani. Nineteenth Century. 2254

33. KAMANDALA — a large vase with chased and engraved figures (Hindu deities and women) in scrolls of asparagus flowers deeply cut in the metal. If the interstices were filled with niello or enamel it would be like the best of Moradabad ware.
Size : Ht. 18½"
Rajasthani. Nineteenth Century. 2096
34. KAMANDALA — a large Fakeer's bowl, engraved with ground filled in with red lac.
Size : Ht. 19"
Rajasthani. Nineteenth Century. 2094
35. TEA POT — with cover spout and handle inscribed Urdu all around; Turkish design.
Size : Ht. 6"
Rajasthani. Nineteenth Century.
36. VASE — with cover and grooved bowl; engraved. Two parrots on the neck.
Size : Ht. 6½"
Rajasthani. Nineteenth Century. 2401
37. BOX — with cover. Amrit Ban with large oval medallions of bouquets of flowers.
Size : Ht. 9½"
Rajasthani. Nineteenth Century. 2389
38. BOX — with cover; figure of Ganeśa on the top of the cover.
Size : Ht. 8"
Rajasthani. Nineteenth Century. 1034
39. WATER VESSEL — *Jhārā*, with fine floral diapers round the bowl.
Size : Ht. 7½"
Rajasthani. Nineteenth Century. 2238
40. EWER — Ornamented with medallions with bands of flowers.
Size : Ht. 17"
Rajasthani. Nineteenth Century. 2385
41. WATER BOTTLE — *Surāhī*, with vertical bands of creepers and birds in repoussé.
Size : Ht. 14½"
Rajasthani. Nineteenth Century. 2426
42. TEA-POT — with floral bands of ornament in repoussé. Kashmir pattern.
Size : Ht. 8"
Rajasthani. Nineteenth Century. 2403

43. EWER — with fine diaper ornament over the bowl; copied from an old Moradabadi design.
Size: Ht. 14"
Rajsthani. Nineteenth Century. 2448
44. EWER — *Hastawa*, with repoussé ornament of flowers and animals in medallions. Copper and brass.
Size: Ht. 14"
Rajsthani. Nineteenth Century. 2405
45. TEA-POT — with fine medallions of flowers. Tibetan pattern.
Size: Ht. 11"
Rajsthani. Nineteenth Century. 2418
46. BOX — for food with cover; floral ornament.
Size: Ht. 8"
Rajsthani. Nineteenth Century. 2397
47. WATER BOTTLE — *Surāhi*; repoussé with delicate flowers on the bowl and twisted band in the stem.
Size: Ht. 11½"
Rajsthani. Nineteenth Century. 2420
48. EWER — with diaper repoussé ornament. *Badron-ka-jal*.
Size: Ht. 10½"
Rajsthani. Nineteenth Century. 2393
49. EWER — *Hastawa*, with copper enrichment, animals fighting in medallions.
Size: Ht. 10"
Rajsthani. Nineteenth Century. 2413
50. GENSER — Copied from a drawing of a Russian original at the South Kensington Museum. Brass with silver-plated raised ornament.
Size: Ht. 10"
Rajsthani. Nineteenth Century. 2391
51. FLOWER VASE — with floral ornament and hunting scenes in medallions; repoussé.
Size: Ht. 12½"
Rajsthani. Nineteenth Century. 2431
52. WATER VESSEL — *Jhārā*; bowl with vertical strips alternatively plain with bands of flowers in repoussé.
Size: Ht. 8½"
Rajsthani. Nineteenth Century. 2434

53. WATER VESSEL — with cover and handles; Gamia. Krishna, Rādhā and nine *gopīs* or milkmaids stand on the lid. Round the bowl are: (i) a line of ten of the greater Gods in their vehicles; (ii) the incarnations of Vishnu, (iii) the personified planets all in repoussé.
Size: Ht. 13½"
Rajasthani. Nineteenth Century. 2408
54. RĀMĀYANA VASE — Globular with a flat lid on which is placed a figure of Rāvaṇa. There are scenes in repoussé on the bowl which are taken from the *Rām Nāmah*.
Size: Ht. 10"
Rajasthani. Nineteenth Century. 2400
55. OIL FLASK — medallions of animals fighting and flowers creeper round the stem. Repoussé.
Size: Ht. 9½"
Rajasthani. Nineteenth Century. 2416
56. WATER VESSEL — with spout Dharwadar. *Hastawa*; engraved.
Size: Ht. 11½"
Rajasthani. Nineteenth Century. 2260
57. WATER BOTTLE — *Surāhi*; copied from a painting of *Rām Nāmah* pattern — Embossed grotesque figures with floral ornament.
Size: Ht. 11"
Rajasthani. Nineteenth Century. 972
58. BOX — On three feet, Garuḍa on the cover and medallions with animals fighting round the bowl.
Size: Ht. 10"
Rajasthani. Nineteenth Century. 2422
59. COFFEE POT — with sun in the centre. *Suraj-ka-Hastawa*. Yarkana shaped brass and copper.
Size: Ht. 15"
Rajasthani. Nineteenth Century. 1033
60. VASE — with Krishna on the cover; Isphan model; embossed.
Size: Ht. 12"
Rajasthani. Nineteenth Century. 992
61. VASE — with Krishna on the cover; Isphan model; embossed.
Size: Ht. 12"
Rajasthani. Nineteenth Century. 2417
62. WATER BOTTLE — with a snake-shaped handle.
Size: Ht. 15½"
Rajasthani. Nineteenth Century. 2387

63. WATER VESSEL — with spout; engraved on the bowl are embossed medallions reproduced from *Razm Nāmah*.
Size : Ht. 13½"
Rajasthani. Nineteenth Century. 1006
64. WATER VESSEL — Camel-shaped (spout).
Size : Ht. 10"
Rajasthani. Nineteenth Century. 2083
65. SANP-KA-HASTAWA — Vase; embossed with figures of the principal gods and winged attendants.
Size : Ht. 12½"
Rajasthani. Nineteenth Century. 2427
66. WATER BOTTLE — *Surahi*; with two handles, repoussé with floral ornamentation.
Size : Ht. 13½"
Rajasthani. Nineteenth Century. 2428
67. CENSER — Copied from a Russian original bowl with alternate lobes and perforations.
Size : Ht. 8½"
Rajasthani. Nineteenth Century. 2234
68. WATER BOTTLE — *Surāhi*; peacock on the top.
Size :
Rajasthani. Nineteenth Century. 2438
69. KAMRAKHI HASTAWA — Water jug; fluted. Pattern taken from the *Astirrhā*. Carambola fruit.
Size : Ht. 13"
Rajasthani. Nineteenth Century. 2386
70. HASTAWA — with dome shape cover and handle.
Size :
Rajasthani. Nineteenth Century.
71. BELL — with Garuḍa on the top.
Size : Ht. 7"
Rajasthani. Nineteenth Century. 9936
72. COFFEE POT — Bokhara pattern. The central ornament of the bowl is set with garnets. The whole surface is covered with engraved figures.
Size : Ht. 13"
Rajasthani. Nineteenth Century. 2425
73. PAŅCHA PĀTRA — Vessel for holding water in the sacrificial service with diagonal copper bands.
Size : Ht. 3½"
Rajasthani. Nineteenth Century. 9979

74. BELL — with figure of Garuḍa on the top.
Size : Ht. 11"
Rajasthani. Nineteenth Century. 9933
75. THRONE — for idols.
Size : Ht. 8"
Rajasthani. Nineteenth Century. 10024
76. COFFEE POT — Yarkand pattern; engraved. Scroll design.
Size : Ht. 12"
Rajasthani. Nineteenth Century. 2419
77. BETEL BOX — *Pāṇḍāni*; perforated.
Size : L. 4½", W. 3½", H. 2"
Rajasthani. Nineteenth Century. 1036
78. PAÑCHA PĀTRA — Of peculiar shape. It has a bowl on the top of which is a long flattened handle with spout hollowed out into a receptacle for flower with a curved spoon.
Size : Ht. 2", Length 9½"
Rajasthani. Nineteenth Century. 10002
79. HINḌOLĀ — Swing for Śiva — Pañchāyatana.
Size : Ht. 8½"
Rajasthani. Nineteenth Century. 10035
80. VĀSUDEVA GLASS — Tantalus cup, to commemorate the retreating of the waters of Yamuna, when Vasudeva was carrying Kṛishṇa.
Size : Ht. 4½"
Rajasthani. Nineteenth Century. 10036
81. ATTARDĀN — in a circular tray.
Size : Ht. about 4"
Rajasthani. Nineteenth Century.
82. ATTARDĀN — in a circular tray.
Size : Ht. about 4"
Rajasthani. Nineteenth Century.
83. SALVER — Circular and engraved.
Size : Di. 12"
Rajasthani. Nineteenth Century. 1037
84. ATTARDĀN — Brass centre; a bowl supported by a pigeon carrying a flower in its mouth. Four small bowls or sprays from the base. The stand is polished to imitate water and has a border from which green glass beads are pendant.
Size : Ht. 5"
Rajasthani. Nineteenth Century. 2241

85. FISH — flexible.
Size : Length 10½"
Rajasthani. Nineteenth Century. ,
86. BOX — X-Shaped; used for keeping betel leaves. *Pāndān*.
Size : Ht. 4"
Rajasthani. Nineteenth Century. 1014
87. SALVER — Circular — Hammered; pattern taken from west side of Batashewala's tomb at Delhi.
Size : Di. 24"
Rajasthani. Nineteenth Century. 2131
88. SALVER — Circular; embossed.
Size : Di. 30"
Rajasthani. Nineteenth Century. 9367
89. SALVER — Circular; plain, drawing room pattern.
Size : Di. 30"
Rajasthani. Nineteenth Century. 2114
90. SALVER — Circular; Dravidian pattern; carved stem with beautiful flowers.
Size : Di. 18"
Rajasthani. Nineteenth Century. 2152
91. SALVER — Circular; from the soft dripstone at Fatehpur Sikri. Handsome floral drops in raised bands.
Size : Di. 18"
Rajasthani. Nineteenth Century. 2153
92. SALVER — Circular; plain wide margin, short centre without mat ground.
Size : Di. 18"
Rajasthani. Nineteenth Century. 2130
93. SALVER — Circular; embossed. Pattern taken from the east side of Batashewala's tomb at Delhi.
Size : Di. 16"
Rajasthani. Nineteenth Century. 2109
94. SALVER — Circular; with wide centre border ornamented; pattern Dravidian scroll. Formed of a curved stem with flowers.
Size : Di. 18"
Rajasthani. Nineteenth Century. 2160
95. SALVER — Circular; with wide centre. Dravidian pattern curved stem with buds.
Size : Di. 18"
Rajasthani. Nineteenth Century. 2161

96. SALVER — Circular; scalloped border; Arabesque pattern taken from the tomb of Humayun at Delhi.
Size: Di. 18"
Rajasthani. Nineteenth Century. 2110
97. SALVER — Circular; pattern taken from the tomb of Humayun at Delhi.
Size: Di. 14"
Rajasthani. Nineteenth Century. 2123
98. SALVER — Circular; pattern taken from the tombs at Delhi.
Size: Di. 16"
Rajasthani. Nineteenth Century. 2124
99. SALVER — Trefoil-shaped; engraved with mythological figures in the centre. Sub: Kṛishṇa and Rādhā in a swing with two female attendants on either side.
Size: Di. 12"
Rajasthani. Nineteenth Century. 2125
100. TRAY — Octagonal; engraved. Sub: Churning of the ocean by the Gods.
Size: Di. 12"
Rajasthani. Nineteenth Century. 2126
101. SALVER — Circular; scalloped border. Arabesque pattern.
Size: Di. 24"
Rajasthani. Nineteenth Century. 2108
102. SALVER — Circular; with border of twelve scallops. Engraved with coloured mythological subjects on the margins and in the centre imitation of Moradabad work.
Size: Di. 25"
Rajasthani. Nineteenth Century. 2132
103. SALVER — Circular; with wide centre and ornamented border. Dravidian pattern, alternating conventional flowers and circular petras.
Size: Di. 18"
Rajasthani. Nineteenth Century. 2164
104. SALVER — Circular; with wide centre and ornamented border. Pattern: Dravidian scroll with diapers.
Size: Di. 18"
Rajasthani. Nineteenth Century. 2165
105. SALVER — Circular; with wide centre ornamented border. Pattern: Dravidian Chain.
Size: Di. 18" , 2162

106. SALVER — Circular; with wide centre and ornamented borders. Dravidian interlaced double loop pattern.
Size: Di. 18"
Rajasthani. Nineteenth Century. 2163
107. SALVER — Circular; from the soffit of a dripstone at Fatehpur Sikri. Handsome floral drops in raised bands.
Size: Di. 18"
Rajasthani. Nineteenth Century. 2153
108. SALVER — Circular border; pattern taken from the soffit of a dripstone; Sultan's house, Fatehpur Sikri.
Size: Di. 18"
Rajasthani. Nineteenth Century. 2154
109. SALVER — with wide border of eight large scallops; embossed; brass; Design taken from a tomb of Delhi.
Size: Di. 30"
Rajasthani. Nineteenth Century. 501
110. TRAY — Ornamental plain frosted floral border.
Size: Di. 16"
Rajasthani. Nineteenth Century. 2166
111. SALVER — Circular with ornamented border.
Size: Di. 18"
Rajasthani. Nineteenth Century. 2167
112. SALVER — with mythological subjects from the *Mārkeṇḍeya Purāṇa* in medallions round the edge. Dash Mahāvidyā or ten forms of Kālī. In the centre Śiva as the Lord of the Himalayas.
Size: Di. 13"
Rajasthani. Nineteenth Century. 2159
113. PLAQUE — Repoussé; Subject taken from the *Razm Nāmah*. Rāma and his allies, the monkeys and the bears, crossing the island of Laṅkā on the bridge.
Size: 15" × 11½"
Rajasthani. Nineteenth Century. 2112
114. PLAQUE — repoussé; Sub: Arjuna in his battle with Śusarman king of Trigarta; shoots an arrow which produces serpents. His foe meets it with one which brings forth the Garuḍa bird, the enemy of snakes (from *Razm Nāmah*).
Size: 16" × 12"
Rajasthani. Nineteenth Century. 2113
115. SALVER — Circular border and centre ornamented with mythological figures.
Size: Di. 15"
Rajasthani. Nineteenth Century. 2127

116. PLAQUE — repoussé; subject taken from *Razm Nāmah*.
Size : 16" × 12"
Rajasthani. Nineteenth Century. 2128
117. MAHĀBHĀRATA SHIELD — Circular; Sub : Cast from *Razm Nāmah*.
Size : 56" × 40"
Rajasthani. Nineteenth Century.
118. RĀMĀYAṆA SHIELD — Oval; sub : Taken from *Razm Nāmah*.
Size : 56" × 40"
Rajasthani. Nineteenth Century.
119. ASHVAMEDHA YAJÑA SHIELD — Oval; Sub : taken from *Razm Nāmah*.
Size : Di. 68"
Rajasthani. Nineteenth Century.
120. SALVER — with fourteen semi-circles which form a flower design in centre; plain.
Size : Di. 30"
Rajasthani. Nineteenth Century.
121. SALVER — with fourteen semi-circles which form a flower design in centre; plain.
Size : Di. 30"
Rajasthani. Nineteenth Century.
122. SALVER — Circular; with plain centre.
Size : Di. 30"
Rajasthani. Nineteenth Century.
123. SALVER — Circular.
Size : Di. 30"
Rajasthani. Nineteenth Century.
124. BASIN — with stand.
Size : Ht. 4'
Rajasthani. Nineteenth Century.
125. LAMP — dome-shaped; perforated work.
Size : Ht. 5½'
Rajasthani. Nineteenth Century.
126. MASKS — (Eight).
Size : 15" × 12"
Rajasthani. Nineteenth Century.
134. SALVER — Circular; with plain wide centre. From Fatehpur Sikri. Border of diapers in a beaded frame-work.
Size : Di. 24"
Rajasthani. Nineteenth Century. 2158

135. WATER POT — *Hastawa, Badna*; fluted and engraved.
Size : Ht. $8\frac{1}{2}$ "
Rajasthani. Nineteenth Century. 966
136. ROSE WATER SPRINKLER — *Gulābdāni*.
Size : Ht. 10"
Rajasthani. Nineteenth Century. 2244
137. TEA POT — Turkish shape; without cover and spout.
Size : Ht. 6"
Rajasthani. Nineteenth Century.
138. SURAHI — Small; Bokhara pattern; engraved.
Size : Ht. 6"
Rajasthani. Nineteenth Century.
139. EWER — with lobed body and engraved ornament.
Size : Ht. 12"
Rajasthani. Nineteenth Century. 961
140. WATER JUG — fluted pattern taken from the *Kamrakh* or *averrhoa carambola* fruit.
Size : Ht. 13"
Rajasthani. Nineteenth Century. 964
141. PĀRĀSVANĀTHA — image; the 23rd Jain Lord or deified saint.
Size : Ht. 7"
Rajasthani. Nineteenth Century. 988
142. COFFEE POT — Small; engraved. Turkish shape.
Size : Ht. 6"
Rajasthani. Nineteenth Century. 2455
143. MILK JUG — engraved. Turkish pattern.
Size : Ht. $5\frac{1}{2}$ "
Rajasthani. Nineteenth Century. 2456
144. CENSER — Russian pattern.
Size : $6\frac{1}{2}$ "
Rajasthani. Nineteenth Century. 977
145. CENSER — Copied from a Russian original at South Kensington Museum; silver plated.
Size : $10\frac{1}{2}$ "
Rajasthani. Nineteenth Century. 978
146. CENSER — Copied from a Russian original; bowl with alternate lobes and perforations.
Size : $7\frac{3}{4}$ "
Rajasthani. Nineteenth Century. 986

147. IMARTI — with figures of Gods and foliage.
Size :
Rajasthani. Nineteenth Century. 2306
148. WATER BUCKET — *Dol*; without ornament plain.
Size :
Rajasthani. Nineteenth Century. 976
149. FLOWER VASE — in repoussé.
Size : Ht. 9½"
Rajasthani. Nineteenth Century. 2250
150. LIQUEUR VESSEL — *Chuski*.
Size : Ht. 4½"
Rajasthani. Nineteenth Century. 2390
151. ROSE WATER SPRINKLER — Repoussé.
Size : Ht. 9½"
Rajasthani. Nineteenth Century. 2251
152. VESSEL — for drinking wine; *Chuski*.
Size :
Rajasthani. Nineteenth Century. 2396
153. FOUR GLOBULAR VESSELS — with covers attached to each other by brass rods and with handle.
Size :
Rajasthani. Nineteenth Century.
154. ROSE WATER SPRINKLER — *Gulābdānī*.
Size : Ht. 10"
Rajasthani. Nineteenth Century. 2248
155. LIQUEUR VESSEL — *Chuski*; used by the Rajputs.
Size :
Rajasthani. Nineteenth Century. 973
156. SALVER — Circular; scalloped border. Arabesque pattern taken from the tomb of Humayun.
Size : Di. 18"
Rajasthani. Nineteenth Century. 957
157. BETEL BOX — Cylindrical; Naliya.
Size : L. 7"
Rajasthani. Nineteenth Century. 1011
158. BETEL BOX — Cylindrical; Naliya.
Size : L. 6"
Rajasthani. Nineteenth Century. 1013

159. ROSE WATER SPRINKLER — *Gulāhdānī*.
Size : 10"
Rajasthani. Nineteenth Century. 1022
160. INCENSE BURNER — with perforated designs in circles.
Size : Ht. about 8½"
Rajasthani. Nineteenth Century.
161. TRAY — Circular; with repoussé broad border and plain centre.
Size : Di. about 16"
Rajasthani. Nineteenth Century.
162. SALVER — Circular; engraved.
Size : Di. 12"
Rajasthani. Nineteenth Century. 2258
163. TRAY — Circular.
Size : Di. 12"
Rajasthani. Nineteenth Century. 1015
164. SALVER — Circular; engraved.
Size : Di. 12"
Rajasthani. Nineteenth Century. 1005
165. SALVER — Circular; embossed.
Size : Di. 30"
Rajasthani. Nineteenth Century. 8722
166. SALVER — Hammered; circular. Pattern taken from the
West side of Batashewala's tomb at Delhi.
Size : Di. 24"
Rajasthani. Nineteenth Century. 1050
167. TRAY — Circular; chased and engraved.
Size : Di. 10"
Rajasthani. Nineteenth Century. 3098
168. TOILET BOX — Circular; with peacock on the top and sup-
ported by three legs.
Size : Ht. 5", Di. 2½"
Rajasthani. Nineteenth Century. 1481
169. HANGING LAMP — elephant cut; supported with chains.
Size : Ht. 3'
Rajasthani. Nineteenth Century.
170. WATER VESSEL — *Chambu*; engraved and lacquered. Orna-
mented with interlaced floral branches round the bowl on a
frosted ground.
Size : Ht. 7"
Rajasthani.

171. WATER VESSEL — *Chambu*; engraved and lacquered painted; ornamented with interlaced floral branches round the bowl and frosted ground.
Size : Ht. 7"
Rajasthani. Nineteenth Century.
172. BRASS WATER VESSEL — with spout; *Hastawa*; used in Bengal.
Size : Ht. 10"
Rajasthani. 387
173. BRASS WATER VESSEL — with spout; *Hastawa*; used in Bengal.
Size : Ht. 10"
Rajasthani. 389
174. TOP OF A THRONE — *Kalasa*.
Size : Ht. 2½"
Rajasthani. 1517
175. BRASS BELL — for a bullock cart; jang.
Size : Ht. 2½"
Rajasthani. 1539
176. BRASS YONI — used in pouring water.
Size : Ht. 4"
Rajasthani. 9960
177. MILK POT — without cover.
Size : Ht. 2"
Rajasthani.
178. BRASS SAMPATNI — used in offering flowers.
Size : Ht. 1½"
Rajasthani. 9953
179. INCENSE BURNER.
Size : Ht. 4"
Rajasthani. 9984
180. FIGURE OF HORSE — mounted on four wheels.
Size : Ht. 4½"
Rajasthani. 1493
181. ELEPHANT — with driver.
Size : Ht. 3½"
Rajasthani. 1483
182. TOILET BOX — with a peacock on the top.
Size : L. 4½"
Rajasthani. 1470

183. ELEPHANT — with a peacock on its back.
Size : Ht. 5"
Rajasthani. 9827
184. ANTIMONY HOLDERS — Fish-shaped.
185. Size : L. 8 $\frac{3}{4}$ "
Rajasthani. 1616-17
186. CUP — holds the sandal paint; used by all sects.
Size : Ht. 1 $\frac{1}{4}$ "
Rajasthani. 9978
187. ELEPHANT — with rider.
Size : Ht. 11 $\frac{3}{4}$ "
Rajasthani. 1468
188. ANTIMONY HOLDER — Fish-shaped.
Size : Ht. 9"
Rajasthani. 1618
189. ARIES — sign of Zodiac.
Size : Ht. 4 $\frac{1}{2}$ "
Rajasthani. 1490
190. SCORPION — *Bichhoo*.
Size : L. 2", Ht. 1 $\frac{1}{4}$ "
Rajasthani. 1566
191. ANTIMONY HOLDER — with probe and peacock.
Surmādānī.
Size : Ht. 3"
Rajasthani. 1570
192. SURMĀDĀNĪ — Antimony holder.
Size : Ht. 3"
Rajasthani. 1518
193. SURMĀDĀNĪ — Antimony holder with probe.
Size : Ht. 2 $\frac{3}{4}$ "
Rajasthani. 1569
194. BULL — The vehicle of Śiva. Rude figure of Nandi.
Size : Ht. 4 $\frac{1}{4}$ "
Rajasthani. 9900
195. LAMP — with two peacocks in the centre, one on another.
Size : Ht. 4 $\frac{1}{4}$ "
Rajasthani. 9944

196. INCENSE BURNER — Peacock-shaped.
Size : Ht. $3\frac{3}{4}$ "
Rajasthani. 9924
197. ELEPHANT — with raised trunk.
Size : Ht. 3"
Rajasthani. 1484
198. HORSE RIDER — with lance.
Size : Ht. 3"
Rajasthani. 1495
199. BULL (NANDI) — The vehicle of Śiva; engraved.
Size : Ht. 2"
Rajasthani. 9896
200. LION — The vehicle of Devī.
Size : Ht. 3"
Rajasthani. 9903
201. BRAZEN PEACOCK.
Size : Ht. 3"
Rajasthani. 1538
202. ANTIMONY HOLDERS — Surmādānī; fish-shaped.
Size : L. 5"
Rajasthani. 1541
203. INCENSE BURNER — Hollow in the form of a crane.
Size : Ht. 7"
Rajasthani. 9828
204. SKIN SCRATCHER — with two peacocks at the top. Jhawa.
Size : Di. $1\frac{3}{4}$ "
Rajasthani. 1540
205. DISH — supported on a bull.
Size : Ht. $5\frac{3}{4}$ "
Rajasthani. 9909
206. WATER BOTTLE — with conical cover and dragon-headed spout set with garnets.
Size : Ht. $2\frac{3}{4}$ "
Rajasthani. 2093
207. WATER BOTTLE — *Surāhī*; with a peacock on the cover.
Size : Ht. $10\frac{1}{4}$ "
Rajasthani. 2100
208. GANGAJALI — Vessel to hold the sacred water of Ganges.
Size : Ht. $6\frac{1}{4}$ "
Rajasthani. 9923

209. WATER VESSEL — Gourd-shaped with handle; *Kamaṇḍala*.
Size : Ht. $7\frac{3}{4}$ "
Rajasthani. 398
210. LOṬĀH — Drinking vessel.
Size : Ht. $2\frac{3}{4}$ "
Rajasthani. 1474
211. DRINKING VESSEL — *Loṭāh*.
Size : Ht. 3"
Rajasthani. 1682
212. WATER VESSEL — *Kamaṇḍala*; Gourd-shaped.
Size : Ht. $6\frac{1}{2}$ "
Rajasthani. 1602
213. YONI-LINGAM — used for pouring water drop by drop on
Yoni-Liṅgam.
Size : Ht. $8\frac{1}{2}$ "
Rajasthani. 9962
214. BOX GROOVED BOWL — Oval.
Size : L. $4\frac{1}{2}$ ", W. 4", Ht. $2\frac{1}{4}$ "
Rajasthani. 1600
215. WATER POT — Ābhkhorā; Partapgarhi.
Size : Ht. 5"
Rajasthani. 1601
216. VESSEL — to hold water in the sacrificial service; engraved.
Size : Ht. $5\frac{1}{2}$ "
Rajasthani. 10027
217. BUCKET — engraved with mythological figures on the bowl.
Size : Ht. $4\frac{1}{2}$ "
Rajasthani. 2102
218. BELL — with serpent's hood and two figures of Hanumān at the top.
Size : Ht. $10\frac{1}{2}$ "
Rajasthani. 400
219. BELL — surmounted by Nandi, the bull vehicle of Śiva; used by the Śaivites.
Size : Ht. $8\frac{1}{4}$ "
Rajasthani. 9938
220. INCENSE BURNER.
Size : Ht. 4"
Rajasthani. 9985

221. STIRRUP — Paira; engraved.
Size : L. $4\frac{3}{4}$ "
Rajasthani. 1565
222. PAIR OF STIRRUPS — Paira.
223. Size : L. 4"
Rajasthani. 1560-61
224. BEDSTEAD LEG — Perforated.
Size : Ht. $6\frac{1}{4}$ "
Rajasthani. 1639
225. BELL — for Bullock Cart; Jang.
Size : Ht. 6"
Rajasthani. 1663
226. DRINKING CUP.
Size : Ht. 3"
Rajasthani. 1545
227. PEN CASE AND INK STAND — with Pyramidal cover; old
Indian shape.
Size : L. 11" Ht. $6\frac{1}{2}$ "
Rajasthani. 1684
228. COOKING POT WITH COVER — *Loṭāh* and *Ḍhākni*; (Domestic utensils).
Size : Ht. $5\frac{1}{2}$ "
Rajasthani. 1652
229. SNUFF BOX — Oval.
Size : L. 2" Ht. $5/8$ "
Rajasthani. 1471
230. BOX WITHOUT COVER — Mango-shaped; perforated.
Size : Ht. 3"
Rajasthani. 1592
231. VESSEL — to hold fire for burning incense, supported by chains.
Size : Ht. 2"
Rajasthani. 10025
232. PAÑCHAPĀTRA — Vessel for holding water in the sacrificial
service of all Gods; engraved.
Size : Ht. $1\frac{1}{2}$ "
Rajasthani. 9958
233. BETEL BOX — *Pāndān*; perforated.
Size : Ht. $6\frac{1}{4}$ " Di. $7\frac{1}{4}$ "
Rajasthani. 1636

234. FOUR TRACERIES — *Jalee*.
 237. Size : L. $6\frac{1}{2}$ " W. $4\frac{3}{4}$ "
 Rajasthani. 1657-60
238. ELEPHANT WITH DRIVER.
 Size : Ht. $7\frac{3}{4}$ "
 Rajasthani. 1488
239. VESSEL — for sacred water of the Ganges. *Gangajali*; engraved.
 Size : Ht. 5"
 Rajasthani. 1683
240. TOP OF THE WALKING STICK — Curved.
 Size : L. $5\frac{1}{2}$ " Di. 1"
 Rajasthani. 1559
241. TRAY — Octagonal; engraved and perforated.
 Size : L. $10\frac{1}{2}$ " W. $8\frac{3}{4}$ "
 Rajasthani. 1641
242. PAÑCHAPĀTRA — Vessel for holding water in the sacrificial service; with figures of flowers, a horse and an elephant engraved upon it.
 Size : Ht. 3"
 Rajasthani. 9959
243. SPITTOON — *Pickdān*.
 Size : Ht. 4"
 Rajasthani. 1678
244. DRINKING CUP — Ābkhora; plated with zinc. There are brass and plated floral bands running alternately round the bowl on the outside, whilst the inside is entirely plated.
 Size : Ht. 3"
 Rajasthani. 1478
245. VESSEL — For sacred water of the Ganges. *Gangajali*; engraved.
 Size : Ht. 5"
 Rajasthani. 1686
246. SALVER — Circular; *Rakābi*; engraved.
 Size : Di. $8\frac{1}{4}$ "
 Rajasthani. 1620
247. DRINKING VESSEL — *Jagannāthi*.
 Size : Ht. $2\frac{1}{4}$ "
 Rajasthani. 1475
248. ANTIMONY HOLDER — Mango-shaped; engraved.
 Size : L. $1\frac{3}{4}$ "
 Rajasthani. 1495

249. WATER VESSEL — Engraved; brass.
Size : Ht. $5\frac{1}{4}$ "
Rajasthani. 10033
250. BOX FOR HOLDING LIME — *Choonāddānī*.
Size : L. 2", Di. $\frac{3}{4}$ "
Rajasthani. 1521
251. TOP OF A WALKING STICK — Lion-headed.
Size : L. $2\frac{1}{4}$ "
Rajasthani. 1525
252. BOWL — Engraved.
Size : Ht. $2\frac{1}{4}$ " Di. $4\frac{1}{4}$ "
Rajasthani. 1619
253. PEACOCK — used as a skin scratcher and also to amuse children.
Painted red, yellow and black.
Size : L. $5\frac{1}{2}$ " Ht. $6\frac{1}{4}$ "
Rajasthani. 1543
254. DRINKING CUP — Ābkhora; engraved.
Size : Ht. $2\frac{3}{4}$ "
Rajasthani. 1479
255. TRAY — Octagonal with perforated border and engraved centre.
Size : L. $10\frac{3}{4}$ " W. $8\frac{3}{4}$ "
Rajasthani. 1637
256. SHIELD — *Dhāl* with four bosses and a border; engraved with
a floral pattern round them.
Size : Di. $11\frac{1}{4}$ "
Rajasthani. 496
257. DRINKING CUP — Ābkhora; plated with zinc.
Size : Ht. 3"
Rajasthani. 1476
258. A PAIR OF SANDALS — plated with zinc; engraved and
painted red on the sides.
Size :
Rajasthani. 1603
259. RĀMĀYAṆA VASE — globular; with a flat lid on which is
placed a figure of Rāvaṇa.
Size : Ht. $20\frac{1}{4}$ "
Rajasthani. 989
260. FLAT CIRCULAR BOX — engraved with figures.
Size : Di. 4"
Rajasthani. 983

261. IMARTI — Water vessel; engraved with floral designs.
Size : Ht. 4"
Rajasthani. 2305
262. TUMBI — or devotee's small bowl with engraved figures.
Size : Ht. 3½"
Rajasthani. 2316
263. WATER BOTTLE — with a snake-shaped handle; *Surāhi Sānpkī*.
Size : Ht. 15½"
Rajasthani. 1004
264. SALVER — circular; floral. Plain wide margin, short centre without mat ground.
Size : Di. 18"
Rajasthani. 2130
265. SMALL WATER POT — Ābkhora; engraved with figures.
Size : Ht. 3"
Rajasthani. 981
266. WATER VESSEL — with two handles and embossed floral ornaments; shape taken from the *Razm Nāmah*.
Size : Ht. 12½"
Rajasthani. 984
267. COFFEE POT — with sun in the centre, *Suraj-ka-hastawa*; yarkand shaped.
Size : Ht. 15"
Rajasthani. 2414
268. HASTĀWA — or water vessel with spout.
Size : Ht. 11"
Rajasthani. 2266
269. WATER VESSEL — with spout, *Mahabharat-ka-Hastawa*; engraved on the bowl are embossed medallions reproduced from the originals in the Emperor Akbar's *Razm Nāmah*.
Size : Ht. 13½"
Rajasthani. 2402
270. WATER VESSEL — *Chambu*; engraved.
Size : Ht. 8½", W. 9"
Rajasthani. 2261
271. TRAY — circular; *Rakabi Rasmandal-ki*; engraved Scene — Kṛishṇa dancing with the *gopīs* or milkmaids.
Size : Di. 10½"
Rajasthani. 2257

272. SALVER—circular. Floral bands of ornament. Centre-Krishna and Rādhā.
Size: Di. 12"
Rajasthani. 2255
273. SALVER—Repoussé work. Subject: one dancing girl.
Size: Di. 10½"
Rajasthani. 2223
274. TRAY—in high relief on which are represented two heavenly nymphs pouring out wine. A reproduction in brass of stone figures on the cenotaph of Maharaja Sawai Jai Singh, the founder of Jaipur.
Size: Di. 19½"
Rajasthani. 2526
275. SALVER—circular; embossed and engraved. Pattern—A female pouring wine into a cup, held by another female while both are dancing. Frosted ground.
Size: Di. 20"
Rajasthani. 1057
276. WATER VESSEL—with spout; embossed and raised with medallions in the centre. Gaṇeśa, Śiva, Sarasvatī etc. Pedestal grooved.
Size: Ht. 16"
Rajasthani. 1016
277. WATER BOTTLE—*Mahabharat-ki-Surahi*. Copied from a painting in the Emperor Akbar's *Razm Nāmah*. Embossed grotesque figures with floral ornament.
Size: Ht. 11"
Rajasthani. 2459
278. SALVER—with border medallions of flowers and birds in repoussé; centre subject: Garuḍa killing a lion-headed monster.
Size: Di. 12"
Rajasthani. 2262
279. TRAY—Oval; engraved. 'Tiger-hunt'.
Size: Di. 2'6"
Rajasthani. 1047
280. CUP—for sipping spirit; *Chuski*, used by Rajputs.
Size: Ht. 6"
Rajasthani. 965
281. VESSEL—for sipping wine; *Chuski*.
Size: Ht. 4½"
Rajasthani. 1025

282. VASE — with cover; bowl-grooved. Two parrots round the neck; engraved.
Size : Ht. $5\frac{1}{2}$ "
Rajasthani. 1023
283. COFFEE POT — Engraved. Turkish design.
Size : Ht. $6\frac{1}{4}$ "
Rajasthani. 2458
284. MARDAN.
Size : Ht. 6"
Rajasthani. 2265
285. BOWL — with a ribbed centre; boat-shaped.
Size : L. $8\frac{1}{2}$ " W. $5\frac{1}{4}$ "
Rajasthani. 1021
286. FIGURE OF A HORSE — *Ghara*.
Size : Ht. $1\frac{1}{4}$ "
Rajasthani. 1031
287. FIGURE OF AN ELEPHANT — without the trappings; *Hathi nangipith*.
Size : Ht. $1\frac{1}{4}$ "
Rajasthani. 1032
288. FIGURE OF AN ELEPHANT — with a state howdah; *Ambawari-ka-Hathi*.
Size : Ht. $1\frac{3}{4}$ "
Rajasthani. 1030
289. FIGURE OF A STAG — *Bara Singha*.
Size : Ht. $1\frac{1}{4}$ "
Rajasthani. 1028
290. FIGURE OF THE SACRED BULL — *Bail*.
Size : Ht. $1\frac{1}{4}$ "
Rajasthani. 1029
291. SMALL DRINKING VESSEL — used by Rajputs. *Chuski* with ribbed bowl.
Size : Ht. 4"
Rajasthani. 2394
292. TRAY — circular. Pattern taken from an old damasened steel tray.
Size : Di. 10"
Rajasthani. 1046

293. WATER BOTTLE — *Surahi*; grooved bowl.
Size : Ht. 12½"
Rajasthani. 2412
294. WATER VESSEL — *Abkhora*; lobed body.
Size : Ht. 6"
Rajasthani. 960
295. WATER BOTTLE — *Surahi*; grooved.
Size : Ht. 8"
Rajasthani. 1002
296. TRAY — Lotus pattern.
Size : Di. 12"
Rajasthani. 1035
297. ROSE WATER SPRINKLER — *Gulabdani*.
Size : Ht. 10"
Rajasthani. 2248
298. COFFEE POT — engraved. Turkish design.
Size : Ht. 10"
Rajasthani. 2454
299. SALVER — Circular; plain ornamental; wide margin without
mat ground.
Size : Di. 30"
Rajasthani. 2116
300. SALVER — Circular; hammered; Pattern taken from the west
side of Batashewala's tombs at Delhi. Frosted ground.
Size : Di. 28"
Rajasthani. 2111
301. SALVER — with a scalloped short centre; frosted.
Size : Di. 30"
Rajasthani. 2121
302. SALVER — Circular, Scalloped; wide centre pattern. Frosted
ground.
Size : Di. 30"
Rajasthani. 2119
303. ZODIAC SALVER.
Size : Di. 30"
Rajasthani. 2156
304. SALVER — Circular; with wide border of eight large scallops.
Embossed. Design taken from a tomb in Delhi.
Size : Di. 30"
Rajasthani. 2129

305. SALVER — Repoussé. Mythological designs round the edge representing the 30 days of the month.
Size : Di. 29"
Rajasthani. 2157
306. SALVER — Circular; old T-pattern; scalloped short centre; frosted.
Size : Di. 30"
Rajasthani. 2122
307. SALVER — Circular with a scalloped wide centre. Frosted.
Size : Di. 30"
Rajasthani. 2118
308. SALVER — Circular. Drawing room pattern. Frosted.
Size : Di. 32"
Rajasthani. 2117
309. SALVER — Circular. Scalloped; short centre.
Size : Di. 30"
Rajasthani. 2120
310. SALVER — Circular. Plain ornamental.
Size : Di. 28"
Rajasthani. 2115
311. PHARSI HUKKAH — *Bādroon-kā-Jāl* in the middle; engraved.
Size : Ht. 7½"
Rajasthani. 431
312. PHARSI HUKKAH — Plated with zinc and engraved.
Size : Ht. 8½"
Rajasthani. 442
313. PHARSI HUKKAH — Plated with zinc and engraved.
Size : Ht. 8½"
Rajasthani. 452
314. HUKKAH — ornamented medallions, flowers and leaves represented.
Size : Ht. 6½"
Rajasthani.
315. HUKKAH — on base, ornamented peacock handle; mango-shaped.
Size : Ht. 4½"
Rajasthani.
316. HUKKAH.
Size : Ht. 4½"
Rajasthani.

317. HUKKAH — Pharsi; with vertical grooves.
Size: Ht. $8\frac{1}{2}$ "
Rajasthani. 484
318. HUKKAH — Pharsi; plated with zinc; engraved.
Size: Ht. $5\frac{1}{2}$ "
Rajasthani. 445
319. HUKKAH — Pharsi; engraved in trees and birds.
Size: Ht. 8"
Rajasthani. 425
320. HUKKAH — Pharsi; engraved in vertical design in columns.
Size: Ht. $7\frac{3}{4}$ "
Rajasthani. 449
321. FAKIR'S CHILLUM — Sulphi. Clay inside, and net work of wire outside.
Size: Ht. 8"
Rajasthani. 550
322. GLOBULAR HUKKAH — grooved.
Size: Ht. 8", Di. 7"
Rajasthani. 2078
323. SMOKING PIPE — circular.
Size: Di. $3\frac{1}{4}$ "
Rajasthani. 1520
324. HUKKAH.
Size: Ht. $4\frac{1}{4}$ "
Rajasthani. 547
325. HUKKAH BASE — *Chau-Phooli-ki-buti* in the middle and grooves engraved right down on the bottom.
Size: Ht. $4\frac{1}{4}$ "
Rajasthani. 557
326. HUKKAH BASE — engraved.
Size: Ht. 5"
Rajasthani. 549
327. HUKKAH BASE — engraved in zig-zag in the middle and bottom.
Size: Ht. 5"
Rajasthani. 540
328. HUKKAH.
Size: Ht. $4\frac{3}{4}$ "
Rajasthani. 538

329. HUKKAH — Zinc; with brass mouthpiece.
Size : Ht. $4\frac{3}{4}$ "
Rajasthani. 556
330. HUKKAH — Zinc; with brass mouthpiece, wooden fire bowl
and boiler.
Size : Ht. 3" and 9"
Rajasthani. 543
331. HUKKAH.
Size : Ht. 4"
Rajasthani. 546
332. HUKKAH — Pharsi.
Size : Ht. 5"
Rajasthani. 562
333. CHILLUM — Sulphi.
Size : Ht. $3\frac{7}{8}$ "
Rajasthani. 566
334. HUKKAH — Pharsi; rose water sprinkler engraved in the
medallions.
Size : Ht. 6"
Rajasthani. 429
335. HUKKAH — with fire bowl.
Size : Ht. $15\frac{1}{2}$ "
Rajasthani. 555
336. ĀRTIKĀ or LAMP — for waving before the idol with a row of
five lamps held by engraved female figure.
Size : Ht. $3\frac{3}{4}$ "
Rajasthani. 10008
337. ĀRTIKĀ or LAMP — for waving before the idol.
Size : Ht. $1\frac{1}{4}$ "
Rajasthani. 10004
338. ĀRTIKĀ or LAMP — for waving before the idol.
Size : Ht. $1\frac{1}{2}$ "
Rajasthani. 10006
339. ĀRTIKĀ or LAMP — for waving before the idol.
Size : Ht. $1\frac{1}{4}$ "
Rajasthani. 9996
340. ĀRTIKĀ or LAMP — for waving before the idol.
Size : Ht. $1\frac{1}{4}$ "
Rajasthani. 9997

341. SAKHI LAMP — fine specimen.
Size: Ht. 12"
Rajasthani. 9802
342. ĀRTIKĀ or LAMP — for waving before an idol; having three wicks.
Size: Ht. 1½"
Rajasthani. 9947
343. ĀRTIKĀ or LAMP — for waving before the idol. There are twelve bowls for wicks supported by a female figure and a large bowl.
Size: Ht. 6"
Rajasthani. 10007
344. FEMALE FIGURE — holding lamp on a perforated pedestal; engraved.
Size: Ht. 13¾"
Rajasthani. 2410
345. FEMALE FIGURE — holding two lamps on a perforated pedestal; engraved.
Size: Ht. 13¾"
Rajasthani. 2406
346. HANGING PARROT-LAMP.
Size: Ht. 14"
Rajasthani. 1628
347. SAKHI LAMP — a female with a serpent's hood; engraved.
Size: Ht. 19¼"
Rajasthani. 9961
348. LAMP — peacock-shaped.
Size: Ht. 6"
Rajasthani. 9948
349. ĀRTIKĀ or LAMP — with one large bowl for waving before the idol.
Size: Ht. 3"
Rajasthani. 9980
350. LAMP BOWL — supported by a peacock.
Size: Ht. 9"
Rajasthani. 9999
351. SAKHI — holding a lamp in one hand and in the other a mirror; standing upon a tortoise.
Size: Ht. 6½"
Rajasthani. 9779

352. ROLLING LAMP.
Size: Di. 6"
Rajasthani. 971
353. SAKHI — holding a lamp.
Size: Ht. 10½"
Rajasthani. 9777
354. SAKHI — holding a lamp. The *Sakhi* is the female attendant on a deity.
Size: Ht. 10"
Rajasthani. 9775
355. CANDLE STICK — similar to No. 1466.
Size: Ht. 13¾"
Rajasthani. 1469
356. ĀRTIKĀ or LAMP — for waving before an idol. It has five triangular projections for wicks.
Size: Ht. 2¼"
Rajasthani. 9940
357. ĀRTIKĀ or LAMP — for waving before an idol.
Size: Ht. 3¼"
Rajasthani. 9941
358. SAKHI — Attendant on a goddess; standing on a pedestal and holding tray in her hands. Fine example.
Size: Ht. 12"
Rajasthani. 9935
359. STAND — for rolling lamp; Tiktee.
Size: Di. 5"
Rajasthani. 963
360. LAMP WITH BOWLS — for wicks.
Size: Ht. 6"
Rajasthani. 10011
361. SAKHI LAMP.
Size: Ht. 6¼"
Rajasthani. 9787
362. SAKHI LAMP.
Size: Ht. 5½"
Rajasthani. 9829
363. SAKHI LAMP.
Size: Ht. 6"
Rajasthani. 9831

364. LAMP — peacock-shaped.
Size : 5"
Rajasthani. 9945
365. ĀRTIKĀ or LAMP — for waving before the idol.
Size : Ht. 2"
Rajasthani. 9981
366. LAMP — parrot-shaped.
Size : Ht. 6" L. 6"
Rajasthani. 994
367. LAMP — with perforated round tray. Indented border.
Size : Ht. 6"
Rajasthani. 9982
368. LAMP ON SNAKE.
Size : Ht. 8½"
Rajasthani. 2095
369. YASODĀ — mother of Kṛishṇa holding her son in her arms.
More realistic than such images usually are very similar to many Roman Catholic images of the Virgin Mary.
Size : Ht. 7½"
Rajasthani. 9851
370. GROTESQUE FIGURE — sitting with a serpent's hood over its head, which supports a similar figure on its head.
Size : Ht. 5"
Rajasthani. 9805
371. LAKSHMĪ.
Size : Ht. 3½"
Rajasthani.
372. IMAGE OF DATTĀTREYA — son of Atri and Anusuyā. A Brahman saint in whom a portion of Brahmā, Viṣṇu and Śiva or more particularly Viṣṇu, was said to be incarnated.
Size : Ht. 4"
Rajasthani. 9778
373. GARUḌA — The vehicle of Viṣṇu.
Size : Ht. 4"
Rajasthani. 9780
374. MODEL OF PANIHĀRIN — Woman carrying a water-pot.
Size : Ht. 5½"
Rajasthani. 2082

375. CHATURBHUJA — or the four-armed Vishṇu.
Size : Ht. $4\frac{3}{4}$ "
Rajasthani. 9799
376. HINDOLĀ — or Swing; for Śiva or a group of five Hindu household deities. In the centre is the *liṅgam* over-shadowed by the cobra which is coiled round the *Yoni*; behind is Gaṇeśa, and in front are Pārvatī as Annapurnā Devī and Nandi.
Size : Ht. $16\frac{1}{2}$ "
Rajasthani. 9994
377. BRAHMĀ.
Size : Ht. $1\frac{3}{4}$ "
Rajasthani. 9895
378. IMAGE OF CHATURBHUJA.
Size : Ht. $2\frac{1}{4}$ "
Rajasthani. 9801
379. GROTESQUE IMAGE OF GAṆEŚA — the God of Wisdom.
Size : Ht. $1\frac{3}{4}$ "
Rajasthani. 9821
380. INFANT KṚISHṆA — Bālamukunda.
Size : Ht. 2"
Rajasthani. 9852
381. GROTESQUE IMAGE OF ANNAPURNĀ — or the Goddess of Plenty.
Size : Ht. $1\frac{1}{4}$ "
Rajasthani. 9819
382. ANNAPURNĀ DEVĪ — the Goddess of Plenty.
Size : Ht. 2"
Rajasthani. 9782
383. THRONE — for idols.
Size : Ht. 12"
Rajasthani. 10028
384. IMAGE OF BĀLAMUKUNDA — or infant Kṛishṇa.
Size : Ht. $1\frac{1}{2}$ "
Rajasthani. 9918
385. IMAGE OF BĀLAMUKUNDA — or infant Kṛishṇa.
Size : Ht. 2"
Rajasthani. 9919
386. BĀLAMUKUNDA — or the infant Kṛishṇa, worshipped by the Vallabhāchāryas.
Size : Ht. $2\frac{1}{4}$ "
Rajasthani. 9786

387. IMAGE OF KRISHṆA.
Size : Ht. 3½"
Rajasthani. 9915
388. IMAGE OF RĀDHIKĀ — Kṛishṇa's consort.
Size : Ht. 3½"
Rajasthani. 9920
389. GROTESQUE IMAGE OF PĀRVATĪ — Wife of Śiva.
Size : Ht. 3½"
Rajasthani. 9823
390. IMAGE OF A HINDU WOMAN — with white enamelled eyes.
Size : Ht. 4½"
Rajasthani. 9781
391. FIGURE OF HINDU FEMALE — standing.
Size : Ht. 4"
Rajasthani. 9776
392. RĀMA WITH SĪTĀ — or Jānkī, his wife, seated on his thigh.
Size : Ht. 4"
Rajasthani. 9784
393. FIGURE OF A BOY — with his right hand raised upwards.
Size : Ht. 2-1/3"
Rajasthani. 1523
394. SAKHI — with a mirror in one hand and a lotus in the other.
Size : Ht. 8"
Rajasthani. 9788
395. HINDU MILKMAID — with a pot of milk on her head.
Size : Ht. 8½"
Rajasthani. 9783
396. IMAGE OF KRISHṆA.
Size : Ht. 4½"
Rajasthani. 9917
397. IMAGE OF RĀDHIKĀ — Kṛishṇa's consort.
Size : Ht. 4½"
Rajasthani. 9916
398. HORSE RIDER — with four hands.
Size : Ht. 5"
Rajasthani. 1486
399. FIGURE OF A GIRL — in a dancing attitude, standing on a pedestal. A good example of the Hindu artist's idea of grace and beauty.
Size : Ht. 10"
Rajasthani. 9773

400. GARUDA — the Vulture King sitting on a throne having a cobra-hood above him, he being the enemy and devourer of all serpents.
Size : Ht. 10½"
Rajasthani. 9814
401. GODDESS — with white enamelled eyes; standing on a pedestal.
Size : Ht. 8¼"
Rajasthani. 9817
- 402- BRASS PATTERN — repoussé-pattern taken from dados on
403- wall.
Size : Ht. 21½"
Rajasthani.
- 404- BRASS PATTERN — repoussé-pattern taken from dados on
405- wall.
Size : 27½"
Rajasthani.
406. ROLLING LAMP — opened to show construction.
Size : Di. 6"
Rajasthani. 982
407. ĀRTIKĀ or lamp for waving before the idol with handsome peacock-shaped handle.
Size : Ht. 2¾"
Rajasthani. 10005
408. ROLLING LAMP — It is hung like a ship's compass.
Size : Di. 6"
Rajasthani. 962
409. PEDESTAL LAMP — with shrine — the back of this lamp is formed of large volutes or scrolls of copper. The God is Vishṇu on a lotus.
Size : Ht. 27"
Rajasthani. 2047
410. BRAZEN SERPENT — in triangular curls.
Size : L. 2"
Rajasthani. 1537
411. ŚIVA AND PĀRVATĪ — riding on a bull with Gaṇeśa on the lap of Pārvatī.
Size : Ht. 7½"
Rajasthani. 9800
412. SHIELD — with raised ornamentation in the centre.
Size : Di. 18"
Rajasthani. 1049

413. BETEL BOX — X-shaped; perforated.
Size: L. 4" B. 3"
Rajasthani.
414. BETEL BOX — pierced-brass-silver plated; floral ornamentation with birds.
Size: $3\frac{1}{2}$ " \times $2\frac{1}{4}$ "
Rajasthani. 858
415. WATER POT — *Hastawa* or *Badna*; fluted and engraved.
Size: Ht. $8\frac{1}{2}$ "
Rajasthani. 959
416. COFFEE POT — Bokhara pattern; the whole surface is covered with engraved figures.
Size: Ht. 13"
Rajasthani. 975
417. CLUB — with tiger-shaped head; *Ghota Nahar-mukhi*; silver-plated brass.
Size: L. 28"
Rajasthani. 1038
418. WATER BUCKET — *Dol*; used at wells; engraved designs.
Size:
Rajasthani. 987
419. SALVER — circular; with wide border.
Size: Di. 16"
Rajasthani.
420. HASTAWA — with dome-shaped cover and handle.
Size: Ht. 13"
Rajasthani.
421. HASTAWA — with dome-shaped cover and handle.
Size: Ht. 13"
Rajasthani.
422. WATER BOTTLE — *Surāhi*.
Size: Ht. 8"
Rajasthani. 2259
423. SALVER — circular; with wide centre and ornamented border. From soffit of dripstone; Sultana's house, Fatehpur Sikri.
Size: Di. 18"
Rajasthani. 2167
424. LAMP STAND — Stem-shaped; like a peacock.
Size: Ht. $3\frac{3}{4}$ "
Rajasthani. 9785

425. KATORDAN — food receptacle; circular.
Size : Ht. $3\frac{1}{2}$ " and Di. $5\frac{1}{2}$ "
Rajasthani. 1604
426. HASTAWA — Water bottle; elaborately ornamented with engraved floral figures.
Size : Ht. 8"
Rajasthani. 2104
427. SALVER — circular; pattern taken from the tombs at Delhi.
Size : Di. 16"
Rajasthani. 1018
428. SALVER — circular; embossed pattern taken from the east side of Batashewala's tomb at Delhi.
Size : Di. 16"
Rajasthani. 1055
429. SALVER — circular; embossed pattern taken from Nadir's tomb at Delhi.
Size : Di. 18"
Rajasthani. 1053
430. SHIELD — with bold raised work in the centre.
Size : Di. 20"
Rajasthani. 1058

BRASS WORK

Section B (Non-Rajasthani)

- | | | |
|------|---|------|
| 431. | TRAY — Circular; engraved. Size : $9\frac{1}{2}$ " Poona. Nineteenth Century. | 163 |
| 432. | TRAY — arch-shaped ends. Size : $8\frac{1}{2}$ " \times $4\frac{1}{2}$ " Poona. Nineteenth Century. | 161 |
| 433. | TRAY — Circular. Size : Di. 7" Poona. Nineteenth Century. | 160 |
| 434. | BOX WITH COVER — * <i>Lotā</i> with Ganeśa at the top. Size : Ht. $6\frac{1}{2}$ " Poona. Nineteenth Century. | 175 |
| 435. | TOILET BOX — used by the Maharatta ladies. Size : $4\frac{1}{2}$ " Poona. Nineteenth Century. | 168 |
| 436. | PAPER KNIFE — with perforated blade. Size : L. 11" Poona. Nineteenth Century. | 180 |
| 437. | BOWL — Small; Chiniot. Size : Ht. $1\frac{3}{4}$ " Poona. Nineteenth Century. | 2273 |
| 438. | VASE — in a lady's hand. Size : $7-1/8$ " Poona. Nineteenth Century. | 147 |
| 439. | BOX WITH COVER. Size : Ht. $4\frac{1}{2}$ " Poona. Nineteenth Century. | 176 |
| 440. | BOX — with cover and flowers in repoussé. Size : Ht. $3\frac{1}{2}$ " Poona. Nineteenth Century. | 172 |
| 441. | TOILET BOX — used by the Maharatta ladies. Size : Ht. $4-5/8$ " Poona. Nineteenth Century. | 167 |
| 442. | BOX — with cover ovoid on three legs. Size : Ht. $6\frac{1}{4}$ " Poona. Nineteenth Century. | 173 |

443. VASE — with two human figures.
Size : Ht. $8\frac{1}{4}$ "
Poona. Nineteenth Century. 148
444. VASE — in a lady's hand.
Size : Ht. 6"
Poona. Nineteenth Century. 149
445. BELL — with Hanuman-shaped handle.
Size : Ht. 8"
Poona. Nineteenth Century. 145
446. WATER VESSEL — *Loṭā*.
Size : Ht. $4\frac{1}{4}$ "
Poona. Nineteenth Century. 177
447. CANDLE STICK — in form of a woman holding a bowl.
Size : Ht. 5"
Poona. Nineteenth Century. 144
448. BELL — with Hanuman-shaped handle.
Size : Ht. $7\frac{1}{4}$ "
Poona. Nineteenth Century. 143
449. SALVER — engraved.
Size : Di. 26"
Banaras. Nineteenth Century. 913
450. WATER BOTTLE — engraved.
Size : Ht. 19"
Banaras. Nineteenth Century. 912
451. FLOWER VASE — engraved.
Size : Ht. $7\frac{1}{4}$ "
Banaras. Nineteenth Century. 922
452. FLOWER VASE — engraved.
Size : Ht. $7\frac{1}{4}$ "
Banaras. Nineteenth Century. 919
453. BOWL — engraved.
Size : Di. $5\frac{1}{4}$ "
Banaras. Nineteenth Century. 937
454. TRAY — engraved; circular.
Size : Di. $6\frac{1}{2}$ "
Banaras. Nineteenth Century. 929
455. Tray — engraved.
Size : Di. $6\frac{1}{2}$ "
Banaras. Nineteenth Century. 924

456. BISCUIT BOX — perforated.
Size : Ht. $11\frac{1}{2}$ "
Banaras. Nineteenth Century. 914
457. BOWL — engraved.
Size : Di. $5\frac{1}{2}$ "
Banaras. Nineteenth Century. 942
458. BOWL — engraved.
Size : Di. $5\frac{1}{2}$ "
Banaras. Nineteenth Century. 930
459. TRAY — engraved.
Size : Di. 10"
Banaras. Nineteenth Century. 933
460. BOWL — engraved.
Size : Di. $5\frac{1}{2}$ "
Banaras. Nineteenth Century. 921
461. FLOWER VASE — engraved.
Size : Di. $7\frac{1}{2}$ "
Banaras. Nineteenth Century. 934
462. WATER BOTTLE — engraved.
Size : Ht. 19"
Banaras. Nineteenth Century. 915
463. WATER VESSEL — *Lotā*; engraved.
Size : Ht. $5\frac{1}{2}$ " and Di. $6\frac{1}{2}$ "
Banaras. Nineteenth Century. 925
464. BELL — engraved; surmounted with a figure of Hanuman.
Size : Ht. $9\frac{1}{2}$ "
Banaras. Nineteenth Century. 920
465. TRAY — *Thāl*; engraved.
Size : Di. $12\frac{1}{2}$ "
Banaras. Nineteenth Century. 916
466. WATER BOTTLE — *Surāhī*; engraved.
Size : Ht. $13\frac{1}{4}$ "
Banaras. Nineteenth Century. 917
467. TRAY — engraved.
Size : Di. $12\frac{3}{4}$ "
Banaras. Nineteenth Century. 927
468. WATER BOTTLE — *Surāhī*; engraved.
Size : Ht. $13\frac{1}{4}$ "
Banaras. Nineteenth Century. 910

469. TRAY — *Thāl*; engraved.
Size : 12½"
Banaras. Nineteenth Century. 911
470. BELL — engraved; surmounted with a figure of Hanuman.
Size : Ht. 9½"
Banaras. Nineteenth Century. 932
471. WATER VESSEL — *Loṭāh*; engraved.
Size : Di. 6½", Ht. 5½"
Banaras. Nineteenth Century. 928
472. TRAY — Octagonal; with cover and chased figures.
Size : 19½" × 15½"
Banaras. Nineteenth Century. 949
473. FLOWER VASE — engraved.
Size : Ht. 7½"
Banaras. Nineteenth Century. 931
474. BOWL — engraved.
Size : Di. 5½"
Banaras. Nineteenth Century. 945
475. VASE — engraved.
Size : Ht. 14½"
Banaras. Nineteenth Century. 91
476. TRAY — Octagonal; engraved.
Size : Di. 18"
Banaras. Nineteenth Century. 940
477. VASE — engraved.
Size : Ht. 14½"
Banaras. Nineteenth Century. 909
478. SALVER — circular with scalloped edges.
Size : Di. 16½"
Banaras. Nineteenth Century. 952
479. BOWL — engraved.
Size : Di. 5½"
Banaras. Nineteenth Century. 926
480. FLOWER VASE — engraved.
Size : Ht. 7½"
Banaras. Nineteenth Century. 941
481. TRAY — Oval; engraved.
Size : 20"
Banaras. Nineteenth Century. 905

482. BOWL — engraved.
Size: Di. $5\frac{1}{2}$ "
Banaras. Nineteenth Century. 923
483. LOTĀ — or water pot with trays, spoon, and cup used in worship by Maharattas; Brass and copper.
Size: Ht. 4"
Nasik. Nineteenth Century. 10032
484. LOTĀ — or water pot with handle for holding water in the sacrificial services.
Size: Ht. $4\frac{1}{2}$ "
Nasik. Nineteenth Century. 10029
485. CUP — with tray and spoon, used in worship by the Maharattas.
Size: Ht. 4"
Nasik. Nineteenth Century. 10031
486. SPITTOON.
Size: Ht. $13\frac{1}{2}$ "
Nasik. Nineteenth Century. 133
487. LOTĀ.
Size: $5\frac{5}{8}$ "
Nasik. Nineteenth Century. 132
488. BETEL BOX — betel leaf shaped.
Size: $6\frac{3}{8}$ "
Nasik. Nineteenth Century. 139
489. BETEL BOX — betel leaf shaped.
Size: $10\frac{3}{8}$ " \times $4\frac{3}{8}$ "
Nasik. Nineteenth Century. 131
490. BOWL — Small; Chiniot.
Size: Ht. $2\frac{1}{4}$ "
Jhang. 2272
491. DRINKING CUP — *Gilar*; grooved.
Size: $3\frac{1}{4}$ "
Nagpur. Nineteenth Century. 141
492. DRINKING CUP — *Ābkhora*; grooved.
Size: $3\frac{1}{4}$ "
Nagpur. Nineteenth Century. 142
493. DRINKING CUP — *Brahmpuri Ābkhora*.
Size: Ht. $4\frac{1}{4}$ "
Nagpur. Nineteenth Century. 88

494. WATER VESSEL — *Lopāh* with spout; old shape.
Size : Ht. 6"
Bhandara. 138
495. KHASDAN — a vessel to hold betel for presentation to guests;
engraved.
Size : Ht. 6" Di. 7½"
Jhang. 2268
496. WATER VESSEL — with handle and spout; *Hastawa*; ribbed
bowl.
Size : Ht. 13½"
Surat. 381
497. BRASS JAR — with cover; bowl engraved with floral bands;
Chiniot.
Size : Ht. 7"
Jhang. 2270
498. BOWL — incised with floral bands.
Size : Ht. 3½"
Bhawalpur. Nineteenth Century. 2271
499. WATER VESSEL — with a fluted bowl, *Kamrakhi Hastawa*.
Size : 11½"
Bombay. Nineteenth Century. 390
500. GANGĀJALI — or bottle for the sacred waters of the Ganges.
It has a globular bowl and tapering neck.
Size : Ht. 9½"
Bombay. Nineteenth Century. 10014
501. KAMANDALU — or devotees' gourd-shaped begging bowl with
spout.
Size : Ht. 8½"
Bombay. Nineteenth Century. 10012
502. WATER POT — with spout for holding the sacred waters of the
Ganges.
Size : Ht. 8"
Ujjain. Nineteenth Century. 10010
503. WATER VESSEL — *Lopā* with ornamentation in repoussé.
Size : 6½"
Tanjore. Nineteenth Century. 174
504. PAÑCHAPĀTRA — or vessel to hold water at the time of reli-
gious functions; engraved.
Size : Ht. 1½"
Trichinapalli. Nineteenth Century. 10026

505. TRAY—circular; on the outer ridge ten depressions each containing a bird in repoussé and chased.
Size: Di. 18"
Madras. 3094
506. SALVER — Grotesque birds inlaid in copper on brass. Encrusted with Tanjore design with central boss of flowers.
Size: Di. 12"
Madras. 3087
507. SALVER — brass with copper inlaid ornamentation. Central boss, representing a bird in copper. Foliage and birds in medallions.
Size: Di. 12"
Madras. 3088
508. TRAY — Octagonal; embossed. Subject: Grotesque animals and birds in repoussé arabesque borders; edge perforated.
Size: Di. 24"
Madras. 3096
509. PAN BOX — perforated.
510. Size: Di. 1-5/8"
Ahmedabad. 165 & 166
511. BOX — ribbed.
Size: Ht. 3 1/2"
Kanpur. 93
512. DRINKING CUP — *Kamandali*.
Size: Ht. 4"
Kanpur. 86
513. POWDER BOX — used by Maharatta ladies in feasts for making a space for guests at dinner. It has two cylinders perforated to form a floral pattern on the ground *Rangoli*.
Size: Ht. 1 1/4"
Indore. Nineteenth Century. 158
514. POWDER BOX — used by Maharatta ladies in feasts for making a space for guests at dinner. It has two cylinders perforated to form a floral pattern on the ground *Rangoli*.
Size: Ht. 1 1/4"
Indore. Nineteenth Century. 159
515. TRAY — engraved.
Size: Di. 15 1/4"
Jhansi. 938
516. TRAY — engraved.
Size: Di. 15 1/4"
Jhansi. 944

517. TRAY — embossed.
Size : $7\frac{1}{2}$ "
Lucknow. 935
518. TRAY — embossed.
Size : Di. $7\frac{1}{2}$ "
Lucknow. 946
519. BOX — for betel; embossed.
Size : Ht. $8\frac{1}{2}$ "
Lucknow. 936
520. SALVER — circular; brass coloured.
Size : Di. $17\frac{1}{2}$ "
Shahjehanpur. 531
521. WATER BOTTLE — brass, lacquered; painted.
Size : Ht. 11"
Amritsar. 2284
522. FAKEER'S BOWL — *Tumbi*; lacquered; painted; an old specimen.
Size : Ht. 5"
Amritsar. 2283
523. CUP — brass; zinc plated.
Size : Ht. 4"
Indian. 153
524. BOWL — engraved with floral band.
Size : Ht. 4"
Indian. 2269
525. VASE — brass; on a circular stand of copper which has three feet. Eight figures of gods in high relief are placed round the upper part of the vase. The whole forms an *Attardān*.
Size : Di. 10"
Chillumbrum. 219
526. BOWL — or *Kātorā*.
Size : Ht. $1\frac{1}{4}$ " Di. 5"
Indian. 2275
527. WATER VESSEL.
Size : Ht. $5\frac{1}{8}$ "
Indian. 129
528. LAMP — for candles.
Size : Ht. 9"
Indian.

529. TRAY — circular.
Size : Di. $6\frac{1}{2}$ "
Moradabad. Nineteenth Century. 164
530. BOWL — *Pyālā*.
Size : Ht. $2\frac{3}{4}$ " and Di. $5\frac{1}{4}$ "
Moradabad. Nineteenth Century. 87
531. DRINKING CUP — with spout.
Size : Ht. $3\frac{1}{2}$ "
Moradabad. Nineteenth Century. 94
532. ROSE WATER SPRINKLER — *Gulābdānī*.
Size : Ht. $2\frac{1}{4}$ "
Moradabad. Nineteenth Century. 113
533. TUMBLER — with cover.
Size : Ht. $5-5\frac{1}{8}$ "
Moradabad. Nineteenth Century. 90
534. CYLINDRICAL BOX.
Size : Ht. $2\frac{3}{4}$ " Di. $4\frac{1}{4}$ "
Moradabad. Nineteenth Century. 115
535. WATER BOTTLE — *Surāhī*.
Size : Ht. $8-1\frac{1}{8}$ "
Moradabad. Nineteenth Century. 108
536. ROSE-WATER SPRINKLER — *Gulābdānī*.
Size : $11\frac{1}{4}$ "
Moradabad. Nineteenth Century. 111
537. WATER BOTTLE — *Surāhī*; pattern *Asparagus Racemosus*, a climbing plant in geometrical tracery.
Size : Ht. $13\frac{1}{4}$ "
Moradabad. Nineteenth Century. 103
538. TUMBLER.
Size : Ht. $4\frac{3}{4}$ "
Moradabad. Nineteenth Century. 117
539. TRAY.
Size : Di. $11-5\frac{1}{8}$ "
Moradabad. Nineteenth Century. 96
540. TRAY.
Size : Di. $11\frac{3}{4}$ "
Moradabad. Nineteenth Century. 95

541. SALVER — Circular.
Size : Di. $6\frac{1}{4}$ "
Moradabad. Nineteenth Century. 107
542. TUMBLER — engraved and lacquered.
Size : Ht. 5"
Moradabad. Nineteenth Century. 89
543. CYLINDRICAL BOX.
Size : Ht. $2\text{-}3\frac{7}{8}$ ", Di. $4\frac{1}{4}$ "
Moradabad. Nineteenth Century. 110
544. SPHERICAL BOX.
Size : Ht. $2\frac{3}{4}$ ", Di. $4\frac{1}{4}$ "
Moradabad. Nineteenth Century. 114
545. SALVER — Circular.
Size : Di. 15"
Moradabad. Nineteenth Century. 106
546. WATER JUG — *Hastawa*.
Size : Ht. $17\frac{1}{4}$ "
Moradabad. Nineteenth Century. 112
547. KAMANDALU — or devotee's small bowl; plated brass.
Size : Ht. $2\frac{1}{2}$ "
Moradabad. 2303
548. SALVER — with floral ornamentation.
Size : Di. $29\frac{1}{2}$ "
Moradabad.
549. TRAY — plated.
Size : $11\frac{3}{4}$ "
Moradabad. Nineteenth Century. 134
550. TUMBLER — plated; square designs; with flowers depicted in.
Size : Ht. 7"
Moradabad. Nineteenth Century.
- 551-556. SIX TUMBLERS — plated; Square designs; with flowers depicted in.
Size : Ht. 7" to 5"
Moradabad. Nineteenth Century.
557. WATER POT — Small *Ābkhora*; plated.
Size : Ht. 3"
Moradabad. Nineteenth Century. 2278
558. INSCRIPTION — Arabic in Imitation.
Size : Di. $29\frac{1}{2}$ "
Moradabad.

559. TRAY — Oval
Size : $11\frac{3}{4}'' \times 9''$
Moradabad. Nineteenth Century. 105
560. SPHERICAL CUP — with saucer.
Size : Di. $3\frac{3}{4}''$ and $6\frac{3}{4}''$ respectively.
Moradabad. Nineteenth Century. 116
561. ATTARDĀN.
Size : H. $5''$
Moradabad. Nineteenth Century. 109
562. SALVER — Circular; plain centre.
Size : Di. $9\frac{1}{4}''$
Moradabad. Nineteenth Century. 104
563. TUMBLER — Syah *kalam*; engraved, lacquered and painted.
Size : Ht. $5''$
Moradabad. Nineteenth Century. 91
564. SALVER — with big flower vase.
Size : Di. $48''$ and Ht. $24''$
Moradabad. 1052
565. SALVER — iron inlaid with gold, old Moradabad work.
Size : Di. $9\frac{1}{4}''$
Indian. 72
566. HEXAGONAL INK POT.
Size : Ht. $1\frac{3}{4}''$, Di. $2''$
Bombay. 1512
567. BOX WITH PYRAMIDAL COVER.
Size : Di. $2\frac{1}{4}''$ H. $2\frac{1}{4}''$
Bombay. 1513
568. TOILET BOX — with plum-shaped boss on the top of the cover.
Size : Ht. $3-1/3''$, Di. $2-5/8''$
Bombay. 1506
569. TOILET BOX — Kamrakh-shaped; used by Maharatta women in the Maharashtra State.
Size : Ht. $2\frac{3}{4}''$ Di. $3\frac{1}{4}''$
Bombay. 1508
570. TOILET BOX — similar to No. 1504.
Size : Ht. $3-1/8''$ Di. $2''$
Bombay. 1507
571. INK POT — with a ribbed bowl and supported on three legs.
Size : Ht. $3\frac{1}{4}''$
Bombay. 1551

572. TOILET BOX — Peacock-shaped; opens into two compartments.
Size : Ht. 9"
Bombay. 9874
573. BOX — Fish-shaped.
Size : L. 4½"
Bombay. 1548
574. Hearth — with chains.
Size : Di. 9½"
Bombay. 1596
575. PARSI — *Lotā, Toombi*.
Size : H. 7"
Bombay. 1676
576. WATER POT — *Gurwa; Gangā-Jamni*.
Size : Ht. 6"
Bombay. 1614
577. BETEL BOX — X-shaped *Pāndān*.
Size : L. 4½" W. 3½"
Bombay. 1496
578. BOX — Mango-shaped.
Size : Di. 2½" L. 4½"
Bombay. 1472
579. BOX — *Dabā*; engraved.
Size : Di. 9" Ht. 4"
Bombay. 1668
580. TRAY — with foliated border; *Kamal-ki-Rakabi*.
Size : Di. 11½"
Bombay. 1685
581. GANGĀJALI — or Bottle for the sacred water of the Ganges;
engraved.
Size : Ht. 3½"
Bombay. 10015
582. BETEL BOX — *Pāndān*; oblong.
Size : 7" × 4½" × 3½"
Bombay. 1615
583. BOX FOR BETELS — *Pāndān*; oval.
Size : L. 8" W. 5" Ht. 3"
Bombay. 1597
584. TOILET BOX — with dome-shaped cover.
Size : Ht. 5½"
Bombay. 1514

585. BOX WITHOUT COVER — Mango-shaped; perforated.
Size : L. $2\frac{1}{2}$ "
Bombay. 1535
586. THRONE FOR AN IDOL.
Size : Ht. $7\frac{1}{4}$ "
Bombay. 9866
587. TOP OF A LANCE — engraved.
Size : L. $4\frac{3}{4}$ "
Bombay. 1534
588. WATER VESSEL — Gourd-shaped; without handle.
Size : Ht. $4\frac{1}{4}$ "
Bombay. 402
589. DRINKING CUP — *Imārti*.
Size : Ht. $3\frac{1}{2}$ "
Bombay. 1455
590. WATER VESSEL — Gourd-shaped; without handle; inlaid with copper; *Kamandalu*, *Gangajamni*.
Size : Ht. 7"
Bombay. 401
591. WATER VESSEL — with spout, *Hastawa*; engraved with patterns of flowers in a geometrical framework.
Size : Ht. $12\frac{1}{4}$ "
Bombay. 386
592. TOILET BOX — with six partitions. *Pañchpura*; used by Maharatta women.
Size : Di. $3\frac{1}{4}$ "
Poona. 1556
593. WATER VESSEL — with cover supported on a circular brass stand with three legs.
Size : Ht. $13\frac{1}{2}$ "
Rewa. 1666
594. BETEL-SHAPED BOX — with peacock on the cover and supported on three legs, used by Maharatta women.
Size : Ht. 4" L. 6"
Ratlam. 1482
595. SEAT FOR THE *LINGAM* GOD — shaped like a lotus with folding leaves.
Size : Ht. $4\frac{1}{4}$ "
Nasik. 9870

596. DISH — supported on a pedestal and a tortoise for Vishṇu.
Size : Ht. $3\frac{1}{4}$ "
Nasik. 9907
597. TOILET BOX — *Karanda*.
Size : Ht. $1\frac{1}{4}$ " Di. 2"
Nasik. 1510
598. LOTUS SEAT — for God Vishṇu on the back of a tortoise.
Size : Ht. $6\frac{1}{4}$ "
Nasik. 9901
599. CANDLE — Lamp stand.
Size : Ht. 6"
Nasik. 9998
600. TOILET BOX — similar to No. 1508.
Size : Ht. $2\frac{1}{4}$ " Di. $2\frac{1}{2}$ "
Nasik. 1511
601. SEAT FOR *LINGAM* GOD — shaped like a Lotus with folding leaves.
Size : Ht. 5"
Nasik. 9869
602. DISH — supported on a bull for Śiva.
Size : Ht. 6"
Nasik. 9908
603. LOTUS SEAT FOR THE *LINGAM* — composed of a bowl with separate leaves which can be closed so as to cover the symbol when placed in the receptacle. The whole borne on the back of the bull *Nandi*.
Size : Ht. $9\frac{1}{4}$ "
Nasik. 9865
604. DISH FOR THE GOD GAṆEŚA or Gaṇapati — supported on a rat with its fore legs raised holding a ball of sweetmeat. The rat is the Vehicle of Gaṇeśa.
Size : Ht. $5\frac{1}{4}$ "
Nasik. 9906
605. DISH — supported on a winged monster with elephant trunk.
Size : Ht. 5"
Nasik. 9904
606. DISH — supported on a horse, the vehicle of *Sūrya* or the Sun.
Size : Ht. $5\frac{1}{4}$ "
Nasik. 9826

607. STAG — Incense burner.
Size : Ht. $4\frac{1}{2}$ "
Nasik. 9867
608. DISH — supported by a goose, the vehicle or *vāhana* of Sarasvatī,
daughter of Brahmā.
Size : Ht. $6\frac{1}{4}$ "
Nasik. 9825
609. DISH — supported on a copper engraved bull.
Size : Ht. 6"
Nasik. 9910
610. CRANE — Incense burner.
Size : Ht. $6\frac{3}{4}$ "
Nasik. 9868
611. DRINKING VESSEL — with a spout in the form of a tiger's
mouth.
Size : Ht. $5\frac{1}{4}$ "
Nasik. 9926
612. INK POT — with spire-shaped cover.
Size : Ht. $12\frac{1}{4}$ "
Nasik. 392
613. INK POT — Square.
Size : Ht. $2\frac{1}{4}$ " Di. $2\frac{3}{8}$ "
Nasik. 1473
614. BOWL — Plain.
Size : Ht. $1\frac{1}{2}$ " Di. $4\frac{1}{4}$ "
Nasik. 1621
615. BETEL BOX — X-shaped; with knobs at the four corners.
Size : L. 6", W. 4"
Nasik. 1504
616. DRINKING VESSEL — with a spout in the form of a crocodile's
mouth.
Size : Ht. 2 $\frac{1}{4}$ ".
Nasik. 9925
617. ROSE-WATER SPRINKLER — *Gulābdānī*.
Size : Ht. $3\frac{3}{4}$ "
Nasik. 397
618. DRINKING CUP — *Pyālā*.
Size : Ht. $2\frac{1}{2}$ ", Di. $2\frac{3}{4}$ "
Nasik. 1509

619. DISH — supported on a pedestal with a tortoise at the bottom;
also a seat for Vishnu.
Size : Ht. $5\frac{3}{4}$ "
Nasik. 9902
620. TOILET CASE — circular.
Size : Ht. $1\frac{1}{2}$ " and Di. $2\frac{3}{4}$ "
Nasik. 9950
621. TOILET BOX — *Karanda*; engraved.
Size : Di. 7", Ht. $4\frac{1}{2}$ "
Nasik. 1665
622. ANTIMONY HOLDER and a probe.
Size : Ht. $3\frac{1}{4}$ "
Surat. 1533
623. TOILET BOX — fish-shaped.
Size : L. $4\frac{1}{4}$ "
Surat. 1547
624. ANTIMONY HOLDER.
Size : Ht. $5\frac{3}{4}$ "
Surat. 1595
625. WATER VESSEL — with spout; *Jam-boonuma*; *Hastawa*; *Toontidar*.
Size : Ht. 8"
Surat. 385
626. COFFEE POT — copper.
Size : Ht. $9\frac{1}{4}$ "
Surat. 391
627. WATER VESSEL — *Lofā*; *Brahmpuri*.
Size : Ht. $4\frac{1}{2}$ "
Nagpur. 1662
628. WATER VESSEL — with long spout; *Hastawa*.
Size : Ht. $6\frac{3}{4}$ "
Surat. 395
629. INK POT — with spire-shaped cover.
Size : Ht. $10\frac{1}{4}$ "
Surat. 406
630. TOILET BOX — square.
Size : Ht. 2", Di. $1\frac{1}{2}$ "
Surat. 1532
631. BETEL BOX — *Pāndān*; circular; plated with zinc.
Size : Ht. $2\frac{1}{4}$ ", Di. 4"
Surat. 1687

632. SPITTOON — engraved
Size : Ht. $2\frac{3}{4}$ "
Surat. 1598
633. BOX FOR HOLDING LIME — round; *Choonādānī*; engraved.
Size : Di. 2"
Surat. 1528
634. WATER BOTTLE — *Surāhi*, with oblique ribs on the neck and bowl.
Size : Ht. $9\frac{1}{2}$ "
Surat. 383
635. WATER VESSEL — with handle and spout.
Size : Ht. $13\frac{3}{4}$ "
Surat. 382
636. STIRRUP — *Pairā*; perforated.
Size : L. 4"
Burhanpur. 1562
637. SKIN SCRATCHER — with peacock at the top. Jawa;
perforated.
Size : Ht. $3\frac{3}{4}$ ", Di. $2\frac{3}{4}$ "
Burhanpur. 1546
638. STIRRUP — *Pairā*; perforated.
639 Size : L. $4\frac{1}{2}$ "
Burhanpur. 1563-64
640. HORSE RIDER — with a Lance.
Size : Ht. $5\frac{3}{4}$ "
Vizagapattam. 1487
641. HORSE RIDER.
Size : Ht. $5\frac{1}{2}$ "
Vizagapattam. 1489
642. DISH — supported on a bull (for the *lingam*) holding in its mouth
a lamp and an incense burner.
Size : Ht. $5\frac{1}{2}$ "
Nagpur. 9905
643. PEACOCK — vehicle of Kartikeya, the God of War.
Size : Ht. $4\frac{1}{2}$ "
Nagpur. 9830
644. VESSEL — for clarified butter.
Size : Ht. 5"
Nagpur. 1656

645. WATER VESSEL. — *Jagannāthi*; inlaid with copper.
Size : Ht. 3"
Nagpur. 1550
646. WATER VESSEL. — *Loṭā*.
Size : Ht. 3"
Nagpur. 1611
647. UMBRELLA — with peacock at the top; perforated.
Size : Ht. 7½"
Nagpur. 1594
648. LAMP — Octagonal; with perforated dome and eight arches.
Size : Di. 13¾", Ht. 29"
Nagpur. 1593
649. FIGURE OF A TORTOISE — *Kachhuwā*; engraved; Mandalay.
Size : L. 3" Ht. ¾"
Burmah. 1557
650. WATER VESSEL. — *Loṭā*; engraved.
Size : Ht. 4¾"
Bhandara. 1673
651. JAIN INCENSE BURNER.
Size : Ht. 9"
Ujjain. 544
652. INK STAND — flat.
Size : L. 3¾", W. 3¼", Ht. 2½"
Ujjain. 1544
653. PEN CASE — *Kalamdān*; old shape; cylindrical; perforated.
Size : Di. 1½", L. 11¾"
Ujjain. 1606
654. OLD JHARI — Dragon handle.
Size : Ht. 7"
Nepal.
655. WATER POT — to hold the sacred waters of the Ganges.
Size : Ht. 6"
Banaras. 403
656. WATER VESSEL — *Kamrakhi loṭā*; oblique flutes on the bowl.
Size : Ht. 4¾"
Cawnpur. 396
657. EATING BOWL — with a ribbed ornament; *Pyālā Kamrakhi*.
Size : Di. 4", Ht. 2½"
Cawnpur. 1552

658. SYRINGE — *Pichkārī*; plated with zinc.
Size : L. $6\frac{1}{4}$ "
Indore. 1522
659. DRINKING CUP — *Imārātī*.
Size : Ht. $2\frac{3}{4}$ "
Central India. 9922
660. COOKING POT — *Toḷā*; Mirzapuri.
Size : Ht. $4\frac{1}{4}$ "
Mirzapur. 1608
661. VESSEL — for clarified butter. Ghilowri with spout and a peacock on the cover; lacquered and painted.
Size : Ht. $6\frac{1}{4}$ "
Palanpur. 1681
662. MODEL OF A BUDDHIST TOPE — Kandi.
Size : Ht. 28"
Ceylon. 9820
663. WATER POT — *Loṭā*.
Size : Ht. 6"
Trichinopally. 471
664. WATER BOTTLE — *Surāhī*; mixed metal; zinc ground; ornamented.
Size : Ht. 12"
Trichinopally. 470
665. TRAY — Similar work as No. 470, made by Palaminuthasari. Perambalur.
Size : Di. $10\frac{1}{4}$ "
Trichinopally. 472
666. LIME BOX — round; engraved.
Size : Di. $1\frac{3}{4}$ "
Ahmedabad. 1554
667. WATER BOTTLE — *Surāhī*; zinc.
Size : Ht. $12\frac{1}{4}$ "
Rewari. 384
668. WATER BOTTLE — *Surāhī*; zinc.
Size : Ht. $12\frac{1}{2}$ "
Rewari. 380
669. KAMAṆḌALU — begging bowl or water pot; engraved; used by a Hindu religious devotee or *Bairāgi*.
Size : Ht. 11"
Bengal. 10045

670. PHARSI HUKKAH — ornamented all around in carving.
Size: Di. & Ht. $11\frac{1}{2}$ "
Burhanpur. 433
671. GAṆEŚA — The God of Wisdom; invoked at the beginning of all work; sitting on a throne. The Hindu Janus.
Size: Ht. 3"
Burhanpur. 9813
672. HANUMĀN — The deified chief of the monkeys, carrying the healing herb, Sanjivani, with the mountain Himalaya in one hand and a mace in the other.
Size: Ht. $3\frac{1}{4}$ "
Burhanpur. 9812
673. HINDU FEMALE.
Size: Ht. 5"
Nagpur. 9789
674. LAMP — with branches to hold wicks. Each branch is surrounded by a figure of a peacock; engraved.
Size: H. 20"
Nagpur. 1467
675. ĀRTIKĀ OR LAMP — held in the hand of a female.
Size: Ht. 5"
Nagpur. 9832
676. CANDLE STICK — with two semi-circular arched branches for holding lights; supported on a circular tray.
Size: Ht. $13\frac{1}{4}$ "
Surat. 1466
677. CANDLE STICK — in the form of a woman holding a bowl.
Size: Ht. 5"
Poona. 146
678. LAMP ON STAND.
Size: Ht. $5\frac{1}{4}$ "
Nasik. 9943
679. LAMP ON STAND — with pentagonal top.
Size: Ht. $5\frac{1}{4}$ "
Nasik. 9942
680. LAMP — with a *Yoni*-shaped bowl.
Size: Ht. $8\frac{1}{4}$ "
Nasik. 10003
681. LAMP — with a *Yoni*-shaped bowl.
Size: Ht. $8\frac{1}{4}$ "
Nasik. 10009

682. LAMP — on stand with a ring for suspension.
Size : Ht. 19"
Nasik. 140
683. JALAHRI — or seat for the *Līngam* God with a hood of serpents;
a fine specimen.
Size : Ht. 2½"
Nasik. 9995
684. LAMP — with branches to hold wicks.
Size : Ht. 19"
Bombay. 1465
685. LAMP — to hold six wicks; supported on a flat tray and with a
peacock on the top and in centre.
Size : Ht. 33" Di. 14"
Bombay. 1567
686. CANDELABRA — with three branches for lamps.
Size : Ht. 9½"
Bombay. 9951
687. ŚIVA PAÑCHĀYATANA — or a group of the five household
deities, all highly finished. Śiva supports his wife, Pārvatī, and
his son Gaṇeśa. In front is Nandi, his bull, and behind are two
attendants, while musicians blow horns in his honour in front.
Size : Ht. 8½"
Bombay. 9806
688. DISH — supported on the back of Garuḍa, used to hold offerings
to the idol, in this case Viṣṇu. Kanwal.
Size : Ht. 5"
Bombay. 9824
689. A GAMING TABLE — supported by four legs.
Size : 7½" × 5"
Bombay. 1529
690. ŚIVA'S SEAT — for the *Līngam* God with serpents over-
shadowing it.
Size : Ht. 6"
Bombay. 9809
691. TRACERY — *Jali*.
Size : L. 6½", W. 5½"
Indian. 1661
692. BETEL BOX — leaf-shaped; engraved and perforated.
Size : L. 5", Ht. 1½"
Indian. 2086

693. A FISH—large, with lion's figure on it.
Size: L. 17"
Indian.
694. PAÑCHPĀTRA—water vessel; used in worship to contain water for libation.
Size: Ht. 3"
Indian. C.N. 2089
695. HUKKAH—Pharsi; engraved in Jhar and Persian tree design vertically.
Size: Ht. 10"
Indian.
696. HUKKAH—vertical lines; engraved in semi-circles in the middle.
Size: Ht. 5½"
Burhanpur.
697. PEDESTAL LAMP—the figure at the back of this shrine is the Sun God driving his car of seven horses, while on either sides of him is a minor deity with a bow bent for action.
Size: Ht. 28"
Indian. 2065
698. ĀRTIKĀ—with six *batties* and a handle.
Size: Ht. 3"
Indian.
699. UDHATTI—or incense burner for holding incense sticks.
Size: Ht. 3½"
Indian. 2087
700. PEDESTAL LAMP—the shrine back is double and is formed by scrolls of conventional flowers. God is the six-armed Vishṇu.
Size: Ht. 3'11"
Indian. 2063
701. ĀRTI—or temple lamp with bowls; for fifteen wicks. An elephant carrying a set of five bowls supports a *Nāga-kanyā* who carries a similar set in her hands and another on the top of the serpent's hood which is above her head.
Size: Ht. 9"
Indian. 2085
702. ĀRTIKĀ—or lamp for waving before the idol.
Size: Ht. 2"
Indian. 9946
703. PEDESTAL LAMP—with conventional tree and flowers in bloom, while from the margin rise flame-like projections. Below

- is the goddess Durgā and god Gaṇeśa. The space in front is for the reception of offerings.
Size : Ht. 42"
Indian. 2081
704. HANGING LAMP — parrot-like.
Size : Ht. 14"
Indian.
705. SIKANDA — or prayer lamp.
Size : Ht. 7"
Indian. 2071
706. LAMP — Hanging to a chain with seven wick-holders.
Size : Ht. 8"
Indian. 9939
707. CANDLE STICK.
Size : Ht. 4½"
Indian. 150
708. SIKANDA — or prayer lamp; *Ārtikā*, *Śeṣh-nāga* with one hood seated on the top of *Ābhora*, Lord Gaṇeśa on the top of the lamp.
Size : Ht. 3½"
Indian. 2046
709. PEDESTAL LAMP — the shrine back is formed of two trees or shrubs (*Daodi* or *Chrysanthemum*, Indian) springing from two vases. Birds are perched in the foliage, the deity is the eighteen armed Devī as *Mahishāsūramardinī*; the leaf pendants are perforated.
Size : Ht. 3½"
Indian. 2076
710. PEDESTAL LAMP — in it will be found a cobra or *Nāga*, the snake which is so inseparably connected with the Hindu faith and the aboriginal worship generally. The top expands into a lamp with four bowls and is crowned by a lotus.
Size : Ht. 2"
Indian. 2053
711. PEDESTAL LAMP — the stem is perforated having a bowl with leaf pendants.
Size : Ht. 24"
Indian. 2054
712. ĀRTIKĀ — prayer lamp; *Śeṣh-nāga* with five hoods seated on the *Ābhora* head and Lord Gaṇeśa on the top of the lamp.
Size : Ht. 7"
Indian. 2060

713. **ĀRTIKĀ** — prayer lamp with a spoon.
Size : Ht. 6"
Indian. 2058
714. **HANGING LAMP** — with an arch which hangs on a long chain.
Size : Ht. 10½"
Indian. 2066
715. **ĀRTIKĀ** — prayer lamp; the handle is formed of a single massive serpent.
Size : Ht. 9½"
Indian. 2059
716. **PRAYER LAMP** — *Yoni*-shaped *Ārtikā*.
Size : Ht. 7"
Indian. 2075
717. **ĀRTIKĀ** — prayer lamp.
Size : Ht. 5½"
Indian. 2048
718. **HANGING LAMP** — with chain.
Size : 1' 9"
Indian. 504
719. **ĀRTIKĀ** — *Śeṣha-nāga* on *Ābhorā's* head with five hoods and Gaṇeśa on the top of the lamp.
Size : Ht. 4"
Indian. 2072
720. **PEDESTAL LAMP** — with Śiva, Pārvatī, Gaṇeśa and Kārttikeya. Immediately behind is a perforated pedestal formed of handsome leaves.
Size : Ht. 22"
Indian. 2056
721. **ĀRTIKĀ** — the heads of snakes with interlaced tails protect a Nāga-kanyā and Gaṇeśa overlooks the bowl which is supported by two female figures.
Size : Ht. 10½"
Indian. 2061
722. **LAMP** — with nine bowls in a square tray.
Size : Ht. 3½"
Indian.
723. **LAMP** — with oil dish on the top in the form of a *yonī*.
Size : Ht. 6½"
Indian. 9833

724. INCENSE BURNER — with two oval bowls below and a circular one above. It is also used for holding sandal paste, flowers and rice for worship or *poojā*.
Size : Ht. 5"
Indian. 9913
725. MODEL — showing a man and his wife with three children kneeling before a lamp bowl.
Size : Ht. 5"
Indian. 2068
726. BUDDHIST SAINT — on a seated elephant.
Size : Ht. 5½"
Indian.
727. GARUDA — vehicle of Vishṇu, snakes all round it, in kneeling position with two wings and a *gadā* in hand.
Size : Ht. 25"
Indian.
728. IMAGE — of a Devī with shrine back.
Size : Ht. 5"
Indian. 2057
729. THRONE — infant Kṛishṇa seated on it.
Size : Ht. 2"
Indian. 9811
730. CHATURBHUJA — with a cobra-shaped back piece.
Size : Ht. 10"
Indian.
731. ARGHAPĀTRA — for pouring libations in honour of Sūrya.
Size : Ht. 2¼"
Indian. 9956
732. HANUMĀN.
Size : Ht. 3½"
Indian. 9853
733. JALHARI — with *Pañchamūrti* or court of five gods.
Size : Ht. 3"
Indian. 9807
734. IMAGE — Buddhist deity.
Size : Ht. 3"
Indian. 2045
735. PĀRŚVANĀTHA — with cobra-headed hood.
Size : Ht. 7¼"
Indian.

736. BĀLAMUKUNDA — with a perforated crown.
Size : Ht. 6½"
Indian.
737. BĀLAMUKUNDA — infant Kṛiṣṇa as worshipped by the
Vallabhāchāryas or the sect which reveres Kṛiṣṇa as a child.
Size : Ht. 4½"
Indian. 2074
738. JAINA GOD — standing.
Size : Ht. 9"
Indian.
739. HINDU FEMALE FIGURE — standing.
Size : Ht. 4½"
Indian.
740. JAGANNĀTHA — as worshipped at Puri in Orissa.
Size : Ht. 5½"
Indian. 9807
741. GAṆEṢA — the God of Wisdom with a brass stand; two standing
female figures on either side of the stand.
Size : Ht. 8"
Indian. 9914
742. ANNAPURṆĀ — the goddess of plenty.
Size : Ht. 5"
Indian. 9864
743. SĪTĀ — brass image.
Size : Ht. 4½"
Indian. 9854
744. ĀRTIKĀ — in the hand of a female figure; without wick-holder.
Size : Ht. 5"
Indian.
745. LAKSHMAṆA — brother of Rāma, the hero of *Rāmāyaṇa*.
Size : Ht. 4½"
Indian. 9863
746. DEVĪ — with four hands.
Size : Ht. 4½"
Indian. 9860
747. RĀDHIKĀ — standing figure.
Size : Ht. 6"
Indian. 9861

748. KRISHNA — without flute.
Size : Ht. 6½"
Indian. 9855
749. KAUSALYĀ — the mother of Rāma, holding a lamp in her hand
with fire wicks.
Size : Ht. 5"
Indian. 9856
750. DISH — supported on a bull standing on two sprigs of a flower
over a circular pedestal.
Size : Ht. 7"
Ujjain. 9912
751. GARUDA — vehicle of Vishṇu with two wings.
752. Size : Ht. 7½" & 8"
Indian.
753. BĀLAMUKUNDA.
Size : Ht. 4½"
Indian. 9862
754. PĀRVATĪ — wife of Lord Śiva.
Size : Ht. 5"
Indian. 2049
755. HANDLES — for bells used in worship.
756. Size : Ht. 6"
Indian. 10037-38
757. IMAGE — standing.
Size : Ht. 13"
Indian.
758. CHATURBHUJA — with horse face.
Size : Ht. 2½"
Indian.
759. BĀLAMUKUNDA — with a ball.
Size : Ht. 5½"
Indian. 9859
760. KRISHNA — with two attendants and cows.
Size : Ht. 8½"
Indian.
761. HANGING LAMPS — with chains, grotesque figures on either
762. side; perforated leaves as pendant.
Size : Ht. 19"
Indian.

763. HANGING LAMPS — with wick cover; three lines on the three sides of the wicks; leaf-shaped pendant.
Size : Ht. 16"
Indian.
764. LAMP — with chain; two grotesque figures on either side; leaf-shaped pendants.
Size : Ht. 19"
Indian.
765. BOX — on the upper lid *Rajatilaka* of Lord Râma Chandra, in repoussé work in oval and floral ornamentation on all sides *Draupadi Chitra Harâṇa* and *Mahâbhârata* scenes depicted.
Size : 18" × 9"
Indian.
766. GAṆEŚA KAṬORĀ — engraved with floral bands on the bowl; handles shaped like snakes; the image of Gaṇeśa on the top.
Size : Ht. 7½"
Indian. 2398
767. GAṆEŚA KAṬORĀ — a vase with two handles; the image of Lord Gaṇeśa on the lid; repoussé.
Size : Ht. 7½"
Indian. 2411
768. WATER VESSEL — two-handled; embossed; done in floral ornamentation; subject taken from *Razm Nāmāh*.
Size : Ht. 11"
Indian. 2452
769. BOX — for holding perfume powder. It stands on a peacock and has another on the cover.
Size : Ht. 5¼"
Indian. 9970
770. JALHARIS — (Two) seats for Śiva *Līṅgam*.
771. Size : Ht. 1" & 1½"
Indian.
772. KAṬORĀ.
Size : Ht. 2½"
Indian.
773. SPITTOON — engraved.
Size : 5¼"
Indian. 2099

774. WATER VESSEL — *Chamboo*; engraved; Banaras.
Size: Ht. 9" W. 9"
Indian. 1019
775. BOX — for keeping betel leaves. *Pāndān*; betel-leaf shaped;
perforated.
SURAT.
Size: L. 5", Ht. 3"
Indian. 1017
776. TOILET BOX — or *Pañchpura* used by Maharatta ladies.
POONA.
Size: Ht. 6"
Indian. 2062
777. FIGURE OF A LIZARD. Trichinopoly.
Size: L. 13½" Ht. 3"
Indian. 1571
778. LOTĀ — water vessel. Nagpur.
Size: H. 4½"
Indian. 1669
779. WATER POT — with spout. Indore.
Size: Ht. 3½"
Indian. 1607
780. CREAM BOWL — with cover; plain work.
Size: Ht. 4", Di. 5½"
Indian.
781. ASH-TRAY — small.
Size: 3" × 2"
Indian.
782. BOX — with persian work.
Size: 11" × 6½" × 9½"
Indian.
783. WATER BOTTLE — camel-shaped.
Size: Ht. 15"
Indian. 2083
784. TEA-POT — *Hastana*.
Size: Ht. 9½"
Indian.

785. VESSEL — to hold water for the sacrificial service; engraved.
Size: Ht. 4"
Indian. 10023
786. DRINKING VESSEL — engraved.
Size: Ht. 4½"
Indian. 9927
787. CHAMBU — chased and engraved.
Size: Ht. 7"
Indian. 10020
788. WATER POT — *Kalāṣa*; engraved.
Size: Ht. 5½"
Indian. 2050

BRASS WORK

Section—C

- | | | |
|------|--|-----|
| 789. | BATHROOM LAMP — pierced. Size : Ht. 13" Persian. Seventeenth Century. | 461 |
| 790. | FLATTENED BOX — pierced. Size : Di. 10" Persian. Seventeenth Century. | 460 |
| 791. | FLATTENED BOX — pierced. Size : Di. 9" Persian. Seventeenth Century. | 458 |
| 792. | FLOWER VASE — perforated. Size : Ht. 13" Persian. Seventeenth Century. | 435 |
| 793. | BATHROOM LAMP — pierced. Size : Ht. 12" Persian. Seventeenth Century. | 476 |
| 794. | CAMEL — perforated. Size : 9½" Persian. Seventeenth Century. | 438 |
| 795. | INCENSE BURNER — with medallions of chased figures. Size : Ht. 16½" Persian. Seventeenth Century. | 427 |
| 796. | CUP — engraved. Size : Ht. 1¼", Di. 3½" Persian. Seventeenth Century. | 443 |
| 797. | FRUIT BOX — perforated. Size : Ht. 8½" Persian. Seventeenth Century. | 436 |
| 798. | BOWL — with pierced cover. Size : Di. 8½" Persian. Seventeenth Century. | 459 |
| 799. | VASE — with cover; human figures in grips; pierced work. Size : Ht. 8" Persian. Seventeenth Century. | 426 |
| 800. | BOWL — on stand; pierced. Size : Di. 8½", Ht. 12" Persian. Seventeenth Century. | 456 |

801. VASE.
Size: Ht. 17"
Persian. Seventeenth Century. 455
802. LAMP STAND — perforated and chased.
Size: Ht. 10 $\frac{1}{4}$ "
Persian. Seventeenth Century. 432
803. TRAY — set with false stones; turquoise and garnets; engraved.
Size: Di. 5"
Persian. Seventeenth Century. 2317
804. CHILAM — or fire receptacle for smoking tobacco; fixed on stand; set with false stones and engraved with brass wooden hanging chains.
Size: Ht. 7"
Persian. Seventeenth Century. 2313
805. VASE — perforated.
Size: Ht. 10 $\frac{1}{4}$ "
Persian. Seventeenth Century. 437
806. FRUIT BOX — perforated.
Size: Ht. 8 $\frac{1}{2}$ "
Persian. Seventeenth Century. 434
807. VASE — perforated.
Size: H. 10 $\frac{1}{4}$ "
Persian. Seventeenth Century. 428
808. SALVER — circular; engraved and chased. Sub: hunting scene.
Size: Di. 9"
Persian. Seventeenth Century. 444
809. CAMEL — engraved.
Size: Ht. 3 $\frac{1}{4}$ "
Persian. Seventeenth Century. 450
810. BOWL — on stand; pierced.
Size: Di. 7 $\frac{1}{2}$ " & Ht. 11"
Persian. Seventeenth Century. 469
811. VASE — with cover-pierced work.
Size: Ht. 9 $\frac{1}{4}$ "
Persian. Seventeenth Century. 430
812. VASE — with human figures in oblong; pierced work.
Size: Ht. 10"
Persian. Seventeenth Century. 424

813. CHAH — GOSH — ewer-shaped; with spout.
Size : Ht. 9"
Persian. Seventeenth Century.
814. VASE — with cover; pierced work.
Size : Ht. 18"
Persian. Seventeenth Century. 454
815. VASE — embossed sun in the centre.
Size : Ht. 7"
Persian. Seventeenth Century. 4295
816. FIGURE — in an attitude of prayer.
Size : Ht. 2½"
Burmah. 9770
817. FIGURE OF BUDDHA — erect; engraved; with the right hand raised as a preacher of the law. Kandi.
Size : Ht. 10"
Ceylon. 9772
818. BUDDHA — erect; engraved. Kandi.
Size : Ht. 3½"
Ceylon. 9822
819. BUDDHA — seated with legs crossed and flame head ornament. Kandi.
Size : Ht. 2"
Ceylon. 9771
820. BUDDHA — seated on the coils of a large cobra or *Nāga* which overshadows his head. The image of Buddha is crowned with the usual flames. Kandi.
Size : Ht. 9"
Ceylon. 9768
821. TORCH-STAND — pierced work.
Size : Ht. 20"
Ispahan, Persia. 457
822. ŚIVA — four-headed, with Pārvaṭī. Śiva embracing and kissing Pārvaṭī.
Size : Ht. 12"
Nepal.
823. FIGURE OF A DEVIL — holding his tail with the left hand and a mace in the right.
Size : Ht. 6½"
Burmah. 1492

824. FIGURE OF A DEVIL — with sword in the left hand and a large cup in the right.
Size : Ht. $8\frac{1}{2}$ "
Burmah. 1491
825. IMAGE — of Gautama; erect; pointing to the city of Mandalay hill.
Size : Ht. $7\frac{1}{4}$ "
Burmah. 9769
826. SALVER — circular; engraved.
Size : Di. 9"
Persian. Seventeenth Century. 448
827. BOWL — wide-mouthed; chased work.
Size : Ht. $4\frac{1}{2}$ ", Di. $8\frac{1}{2}$ "
Persian. Seventeenth Century.
828. SALVER — circular; with two engraved and chased borders of mythological figures.
Size : Di. $11\frac{1}{2}$ "
Persian. Seventeenth Century. 441
829. SALVER — engraved; in the centre there are medallions with figures and around them runs a band of mythological figures of gods and fairies.
Size : Di. $13\frac{1}{2}$ "
Persian. Seventeenth Century. 451
830. CAMEL — perforated; brass.
Size : Ht. $3\frac{1}{4}$ "
Persian. Seventeenth Century. 440
831. HANGING LAMPS (Five) — for candles; excludes the cover
835. and the bottom, the rest portion is made of cloth.
Size : Ht. 2"
Turkish.
836. TRAY — with birds and mosques.
Size : Di. 21"
Damascus. 3092
837. TRAY — with silver letters.
Size : Di. $19\frac{3}{4}$ "
Damascus. 3093
838. TRAY — plain.
Size : Di. 15"
Constantinople. 3095

839. TOBACCO POT — brass; with silver encrusted ornament.
Size : Ht. $4\frac{1}{2}$ " Di. $3\frac{1}{2}$ "
Constantinople. 4329
840. FINGER BOWL — from Damascus.
Size : Di. 6"
Constantinople. 4331
841. FINGER BOWL — from Damascus; brass; with silver ornament;
Arabesque pattern.
Size : Di. $5\frac{1}{2}$ "
Constantinople. 4328
842. BOWL — engraved.
Size : Di. $5\frac{1}{2}$ "
Arabian. 4333
843. BOWL — engraved.
Size : Di. $21\frac{1}{4}$ "
Arabian. 2433
844. BOWL — engraved; Arabesque ornament.
Size : Di. $5\frac{1}{2}$ " Ht. $2\frac{1}{4}$ "
Arabian. 4338
845. SOLDIER.
Size : Ht. 9"
846. JHARI — dragon-handled.
Size : Ht. 7"
Nepal.
847. BUDDHA — seated on a throne.
Size : Ht. 57"
Nepal.
848. BUDDHA — images (Three).
850. Size : Ht. 7"
Nepal.

COPPER WORK

Section-A

851. VISHNU — standing on a pedestal with the many headed *Seshanāga*; the snake king overshadowing him.
Size: Ht. 6½"
Rajasthani. 9816
852. ARGHAPATRA — or cornucopia for holding the offerings (for pouring water).
Size: L. 5½"
Rajasthani. 9986
853. KRISHNA — rude figure with four hands.
Size: Ht. 11"
Rajasthani. 9893
854. SURĀHĪ — water bottle with silver inlays; imitation of Tanjore work.
Size: Ht. 8", W. 4"
Rajasthani. 2199
855. WATER BOTTLE — *Surāhī*, copper; with silver incrustation; imitation of Tanjore work.
Size: Ht. 9" W. 4"
Rajasthani. 2205
856. ĀBKHORĀ — *Imārātī*, or water vessel; copper with silver inlays; imitation of Tanjore work.
Size: Ht. 3½"
Rajasthani. 2202
- 857-860. PLATES — electroplated with silver and engraved.
Size: Di. 5½"
Rajasthani. 587, 88, 89 and...
861. ROSE WATER SPRINKLER.
Size: Ht. 11"
Rajasthani.
862. HUKKAH — Pharsi; perforated; copper.
Size: Ht. 5½"
Rajasthani. 560
863. POLE — for a royal canopy; *Durbari Shamyane-ki-Chob*; copper-plated with silver.
Size: L. 6'3"
Rajasthani. 1048

864. BOX — *Katordan*; embossed and perforated with elaborate ornamentation.
Size: Di. $13\frac{1}{2}$ "
Rajasthani. 2079
865. SNUFF BOX — oval.
Size: L. $2\frac{1}{4}$ ", W. $1\frac{3}{4}$ "
Rajasthani. 1526
866. TRAY — octagonal; engraved.
Size: L. $14\frac{1}{2}$ " W. $10\frac{1}{2}$ "
Rajasthani. 1645
867. MUSICAL INSTRUMENT — *Bhoombhara*.
Size: Ht. $28\frac{1}{2}$ "
Rajasthani. 1644
868. POLE — for a royal canopy; *Durbari Shamyane-ki-Chob*; copper
870. plated with silver.
Size: L. $6'3"$
Rajasthani. 1054, 1052 and 1059
871. EWER — *Hastava*; floral diaper ornament round the bowl.
Size: Ht. $12'$
Rajasthani. 2451
872. STAND — circular; on four feet; shaped like the paws of a lion.
Size: Ht. $2'$, Di. $5'$
Rajasthani. 11221
873. TEA-KETTLE — Tibetan pattern; copper with brass handle and
spout in the form of a monster.
Size: Ht. $11'$
Jaipur. 2308

COPPER WORK

Section — B

874. BISCUIT BOX.
Size : Ht. $9\frac{1}{4}$ "
Poona. 178
875. WATER VESSEL — flowers in repoussé.
Size : Ht. $3\frac{1}{2}$ "
Poona. 170
876. TRAY — engraved.
Size : Di. $11\frac{1}{4}$ "
Lucknow. 499
877. SALVER — circular; embossed; Sub: a tiger killing a stag in the centre.
Size : Di. $18\frac{1}{4}$ "
Lucknow. 493
878. TRAY — engraved.
Size : Di. 11"
Lucknow. 500
879. BOX — embossed.
Size : Ht. 9" Di. $13\frac{1}{4}$ "
Lucknow. 477
880. TRAY.
Size : Di. $7\frac{1}{4}$ "
Lucknow. 498
881. WATER VESSEL — *Pañchapātra*; engraved.
Size : Ht. $2\frac{3}{8}$ "
Poona. 169
882. ROSEWATER SPRINKLER — *Gulābdānt*; very much ornamented.
Size : Ht. $11\frac{1}{2}$ "
Poona. 151
883. WATER VESSEL — with cover.
Size : Ht. $5\frac{3}{4}$ "
Poona. 171
884. WATER VESSEL — *Loṭā*.
Size : Ht. 9"
Madras. 4311
885. VASE — repoussé; ornamented.
Size : Ht. 16"
Madras. 4314

886. EWER — electrotpe; cast, ornamented with a foliated pattern.
Size : Ht. 12", Di. 6½"
Kashmir. 505
887. EWER — electrotpe; cast; ornamented with diaper; sunk and raised leaf patterns.
Size : Ht. 12½", Di. 6½"
Kashmir. 502
888. LAMP — repoussé; floral ornamentation; snake-handled; fitted with a holder for a candle.
Size : Ht. 1¼"
Kashmir. 2274
889. LAMP — snake-handled.
Size : Ht. 1¼"
Kashmir. 2276
890. HOOKAH-BASE — electrotpe; with spherical and floral patterns.
Size : Ht. & Di. 5½"
Kashmir. 506
891. EWER — electrotpe; chased with floral ornament.
Size : Ht. 8½", Di. 4½"
Kashmir. 520
892. TEA-POT — electrotpe; parcel gilt; twelve sided and ornamented with diaper and floral patterns.
Size : Ht. 13½", Di. 7"
Kashmir. 509
893. HOOKAH BASE — electrotpe; with spherical body; divided into foliated panels; containing sprays of flowers.
Size : Ht. 6¼" Di. 6"
Kashmir. 508
894. BUCKET — with handle; cast.
Size : Ht. 8½" Di. 7½"
Kashmir. 512
895. EWER — electrotpe; pyriform and flattened shape; used by Muslims.
Size : Ht. 14½" W. 8"
Kashmir. 516
896. JAR — with cover; repoussé ornament.
Size : Ht. 9"
Kashmir. 2310

897. TRAY — shaped like a sycamore leaf; engraved with floral ornamentation and perforated.
Size: 9" x 9"
Kashmir. 2312
898. PEN CASE — engraved and embossed; ornamented with floral pattern; supported on a dish having a perforated and engraved border.
Size: Ht. 3", Lt. 9½", Wt. 3½"
Kashmir. 2304
899. BOWL — electrotpe; chased with bands and lozenge shaped panels with foliated ornaments and with inscriptions on the rim.
Size: Ht. 4", Di. 6½"
Kashmir. 529
900. EWER — electrotpe; ribbed and ornamented with a scroll pattern.
Size: Ht. 10¾", Di. 7"
Kashmir. 504
901. LOTĀH — electrotpe; chased and ornamented with birds and foliages.
Size: Ht. 4¾" Di. 5½"
Kashmir. 514
902. WATER POT — with dragon-shaped handle; engraved scroll pattern.
Size: Ht. 11"
Kashmir. 515
903. VASE — electrotpe; ornamented with conventional flowers.
Size: Ht. 6", Di. 5"
Kashmir. 513
904. HOOKAH BASE — electrotpe; with spherical body ornamented with conventional flowers.
Size: Ht. 5½", Di. 6"
Kashmir. 507
905. VASE — repoussé; with ornamentation in floral design.
Size: Ht. 6½"
Kashmir. 2311
906. JUG — with handle spout and a cover; carved work.
Size: Ht. 12"
Kashmir.
907. BOWL — electrotpe; chased with foliated scroll pattern and with inscription on the rim.
Size: Ht. 5¾" Di. 9"
Kashmir. 527

908. HOOKAH BASE — electrotpe; with spherical body decorated with diaper patterns.
Size : Ht. $6\frac{1}{8}$ " Di. 6"
Kashmir. 517
909. BOWL — electrotpe; divided into panels and chased with foliated patterns and with inscriptions at the base and on the rim.
Size : Ht. $4\frac{3}{4}$ " Di. $7\frac{1}{2}$ "
Kashmir. 521
910. BOWL — electrotpe; chased with foliated panels and with inscription on the rim.
Size : Ht. $4\frac{1}{2}$ " Di. $6\frac{1}{2}$ "
Kashmir. 518
911. BOWL — electrotpe; chased with foliated scroll patterns with bands of inscription round the centre and rim.
Size : Ht. $4\frac{1}{2}$ " Di. $5\frac{1}{2}$ "
Kashmir. 423
912. COFFEE POT — electrotpe; repoussé; with perforated lid and body decorated with conventional flower ornaments.
Size : Ht. $11\frac{1}{8}$ " Di. $4\frac{1}{2}$ "
Kashmir. 510
913. LOTĀ — electrotpe; chased with conventional floral pattern and with an inscription at the base.
Size : Ht. $4\frac{1}{8}$ " Di. 5"
Kashmir. 528
914. BOWL — electrotpe; chased with star-shaped panel containing foliated ornamentation.
Size : Ht. $3\frac{1}{8}$ " Di. $6\frac{1}{4}$ "
Kashmir. 517
915. BOWL — electrotpe; divided into panels and chased with foliated patterns and with an inscription on the rim.
Size : Ht. $2\frac{3}{4}$ " Di. 5"
Kashmir. 522
916. BOWL — electrotpe; chased with arabesques.
Size : Di. $5\frac{1}{8}$ and $2\frac{3}{4}$ "
Kashmir. 524
917. BOWL — electrotpe; chased with arabesques of animals and floral ornamentation.
Size : Ht. $3\frac{1}{4}$ " Di. $6\frac{1}{4}$ "
Kashmir. 525

918. BOWL — with foot; electrotype; chased on the body with foliated panels containing sprays of flowers and conventional flowers on the rim.
Size : Ht. $4\frac{1}{4}$ "
Kashmir. 526
919. WATER BOTTLE — copper-tinned.
Size : Ht. $12\frac{1}{4}$ "
Kashmir. 621
920. GOBLET — copper-tinned.
Size : Ht. $9\frac{1}{2}$ ", Di. $3\frac{1}{4}$ "
Kashmir. 597
921. GOBLET — copper-tinned.
Size : H. $9\frac{1}{2}$ ", Di. $3\frac{1}{4}$ "
Kashmir. 592
922. SALVER — Ruddy coloured; embossed pattern. There is a broad border with the ten incarnations of Vishnu in repoussé round a floral medallion in the centre.
Size : Di. 28"
Kashmir. 530
923. PLATE — electroplated with silver and engraved.
Size : Di. $5\frac{1}{2}$ "
Kashmir. 585
924. GOBLET — electroplated with silver and engraved.
Size : Di. $5\frac{1}{2}$ "
Kashmir. 579
925. TRAY — engraved.
Size : Di. $5\frac{1}{2}$ "
Kashmir. 593
926. TRAY — engraved.
Size : Di. $5\frac{1}{2}$ "
Kashmir. 595
927. VASE — copper-tinned.
Size : Ht. 2", Di. $2\frac{3}{4}$ "
Kashmir. 607
928. TRAY — copper-tinned.
Size : Di. $5\frac{1}{4}$ "
Kashmir. 603
929. TRAY — copper-tinned.
Size : Di. $5\frac{1}{4}$ "
Kashmir. 602

| | | |
|------|--|-----|
| 930. | WATER VESSEL — <i>Loṭā</i> ; copper-tinned. Size : Ht. $3\frac{1}{2}$ " Kashmir. | 615 |
| 931. | TRAY — copper-tinned. Size : Di. $5\frac{1}{2}$ " Kashmir. | 605 |
| 932. | TRAY — copper-tinned. Size : Di. $5\frac{1}{2}$ " Kashmir. | 609 |
| 933. | TRAY — copper. Size : Di. $5\frac{1}{2}$ " Kashmir. | 581 |
| 934. | TRAY — copper. Size : Di. $5\frac{1}{2}$ " Kashmir. | 594 |
| 935. | TRAY — copper. Size : Di. $5\frac{1}{2}$ " Kashmir. | 598 |
| 936. | TRAY — copper. Size : Di. $5\frac{1}{2}$ " Kashmir. | 583 |
| 937. | WATER BOTTLE — <i>Surāhi</i> ; copper-tinned. Size : Ht. 12" Kashmir. | 599 |
| 938. | TRAY — copper. Size : Di. $5\frac{1}{2}$ " Kashmir. | 582 |
| 939. | GOBLET — copper-tinned. Size : Ht. $9\frac{1}{2}$ " Di. $3\frac{1}{4}$ " Kashmir. | 584 |
| 940. | TRAY — copper; engraved. Size : Di. $5\frac{1}{2}$ " Kashmir. | 580 |
| 941. | TRAY — copper; engraved. Size : Di. $5\frac{1}{2}$ " Kashmir. | 596 |
| 942. | PLATE — electroplated with silver and engraved. Size : Di. $5\frac{1}{2}$ " Kashmir. | 586 |

943. TRAY (11) — copper-tinned.
Size: Di. 5 $\frac{1}{2}$ "
Kashmir. 620, 612, 616, 618, 619, 610, 611, 601, 608, 604 & 617
954. TRAY — circular; repoussé ornamented with a running scroll round the margin; in the centre a figure seated on a throne.
Size: Di. 11"
Kashmir. 2170
955. BOWL — *Katorā*; chased with foliated scroll patterns with bands of inscription round the middle and rim.
Size: Ht. 6 $\frac{1}{2}$ " Di. 10"
Kashmir. 519
956. TRAY — octagonal; perforated; ornament of running scroll diapers.
Size: Di. 14"
Kashmir. 2171
957. TRAY — oval; perforated; ornament of running scrolls on the margin and fish and crescent in the centre.
Size: Di. 28"
Kashmir. 2169
958. WATER BOTTLE (2) — *Surāhi*; copper with silver inlays.
Size: Ht. 8", W. 4"
Tanjore. 2199 & 2205
960. ĀBKHORĀ — Imarti; water vessel; copper with silver inlay.
Size: Ht. 3 $\frac{1}{2}$ "
Tanjore. 2202
961. POT — big; with designs from Ajanta.
Size: 4"
962. PANEL — with foliage and birds in *alto rilievo*.
Size: 14 $\frac{1}{2}$ " \times 7 $\frac{3}{4}$ "
Madras. 2616
963. PANEL — with foliage and birds in *alto rilievo*.
Size: 14 $\frac{1}{2}$ " \times 7 $\frac{3}{4}$ "
Madras. 2617
964. PANEL.
Size: 14 $\frac{1}{2}$ " \times 7"
Madras. 2942
965. PANEL.
Size: 14 $\frac{1}{2}$ " \times 7"
Madras. 2943
966. SALVER — octagonal; copper ground in the centre; Kṛishṇa is represented playing the flute as the Lord of Cows under the

Kadamba tree. Round him are cowherdesses or *gopīs* and *Nāga-Kanyās* or virgin daughters of the Snake king.

Size : 18" × 13"

Indian.

213

967. BOX — with cover.

Size : Ht. 4"

Indian.

217

968. BOX — with cover.

Size : Ht. 5"

Indian.

216

969. WATER VESSEL — with repoussé ornamentation on the bowl.

Size : Ht. 5½"

Indian.

2309

970. CRANE — copper-silver-plated.

Size : Ht. 21"

Indian.

971. WATER POT — *Hastawa*; embossed.

Size : Ht. 6½"

Lucknow.

939

972. BOX — for betel; *Pāndān*; perforated and embossed.

Size : Ht. 7", Di. 6½"

Lucknow.

947

973. DRINKING CUP — Nasik.

Size : Ht. 3½"

Indian.

1477

974. TOILET BOX — with five partitions and a peacock on the cover.

Size : Di. 4½"

Indian.

1480

975. BULL — for the *Liṅgam* God; without dish.

Size : Ht. 5½"

Indian.

9911

976. TRAY — engraved figures.

Size : 9½" × 8½"

Indian.

977. HUKKAH — Pharasi; copper fishes, moon and flower-embossed.

Size : Ht. 6½"

Indian.

978. BUDDHIST DEITY — Copper.

Size : Ht. 2½"

Indian.

9810

979. TORTOISE — the symbol of Vishṇu in the *Machhātāra*.
Size : L. $1\frac{1}{4}$ "
Indian. 9897
980. HANUMĀN — erect.
Size : Ht. $2\frac{1}{2}$ "
Bombay. 9815
981. ARGHAPĀTRA — or vessel for pouring libations in honour of
Sūrya, the Sun God.
Size : L. 1"
Nasik. 10018
982. BETEL BOX — circular; plated with zinc.
Size : Ht. $2\frac{1}{4}$ ", Di. 4"
Surat. 1687
983. CHARMA — *Sūrya Tantra*; the different names of the sun are
engraved; worshipped by the Sauras or Sun-worshippers, who
fast on Sunday.
Size : $3\frac{1}{2}$ " \times $3\frac{1}{2}$ "
Nasik. 9928
984. CHARMA — engraved with hymn giving the names of the Sun
used in his worship.
Size : 3 " \times 3 "
Nasik. 9894
985. RĀMA — with Sītā on his thigh, sitting on a brass throne with
carved back piece.
Size : Ht. $7\frac{1}{4}$ "
Bombay. 9808
986. DATTĀTREYA — a sage in whom a portion of Trinity (*Trimūrti*)
became incarnate. Behind is a bull licking his feet and beside
him two dogs; all very natural.
Size : Ht. $7\frac{1}{4}$ "
Bombay. 9803
987. DISH — supported on a copper bull.
Size : Ht. 6"
Nasik. 9910
988. COFFEE POT.
Size : Ht. $9\frac{1}{2}$ "
Surat. 391
989. WATER VESSEL — Brahmapuri.
Size : Ht. $4\frac{1}{2}$ "
Nagpur. 1662
990. VESSEL — square shaped; to contain holy fire at the time of
Havana.
Size : Ht. $2\frac{3}{4}$ "
Nasik. 9921

COPPER WORK

Section—C

991. AFTABA — plated with zinc; a simple ornament is formed by incising the latter down to the copper. A good classical pattern.
Size : Ht. 13"
Peshawar. 2277
992. AFTABA — spouted jug.
Size : Ht. 13"
993. EWER — *Chahgash*.
Size : Ht. 12"
994. SHIELD — The pilgrims' progress shield. The subject from Bunyan's *Pilgrims' Progress*; oval.
Size : 2'11" × 2'2"
Roman. 532
995. BOX — with cover.
Size : Di. 7"
Constantinople. 4332
996. VEGETABLE DISH — copper.
Size : Di. 5"
Constantinople. 4316
997. TEA POT — engraved and plated.
Size : Ht. 15"
Peshawar. 467
998. HOOKAH — plated and engraved.
Size : Ht. 7"
Peshawar. 462
999. BOWL — engraved and plated.
Size : Ht. 2" Di. 6½"
Peshawar. 464
1000. SPOON AND LADLE.
1001. Size : L. 19½"
1002. BOWL — boat-shaped; with a thin chain to suspend it; engraved and plated.
Size : L. 7½"
Peshawar. 468

1003. BREAD POT — engraved and plated.
Size : Ht. $13\frac{1}{4}$ "
Peshawar. 466
1004. SPOON — used by Mohammedans.
Size : 21 "
Peshawar. 486
1005. JUG — spouted; *Aflaba*; engraved and plated.
Size : Ht. $13\frac{3}{4}$ "
Peshawar. 465
1006. LADLE — engraved and plated.
Size : L. $19\frac{1}{4}$ "
Peshawar. 463

SILVER WORK

Section — A

1007. TRAY — Filigree work.
Size: Di. $13\frac{1}{4}$ "
Rajasthani.
1008. GULAB PASH — Filigree work.
Size: Ht. $13\frac{1}{4}$ "
Rajasthani.
1009. TRAY — on three feet; plated.
Size: Di. $4\frac{1}{2}$ "
Rajasthani. 860
1010. GREASE JUG — with engraved band round the margin. The handle is shaped like a snake with Krishna feeding it. The bowl stands on three feet.
Size: Di. 3"
Rajasthani. 847
1011. SALVER — circular; with grooved border chased and embossed ornament.
Size: Di. $9\frac{1}{2}$ "
Rajasthani. 881
1012. KARANI.
Size: L. $6\frac{1}{2}$ "
Rajasthani. Twentieth Century.
1013. FINGER RING — with a portrait of H.H. the Maharaja of Jaipur, Sawai Madho Singh.
Size: Di. $\frac{3}{4}$ "
Rajasthani. 281
1014. PHOTO FRAME — embossed with a ivory miniature; bust of H.H. Maharaja Madho Singh.
Size: L. 5", W. 4"
Rajasthani. Nineteenth Century.
1015. ATTARDĀN — Filigree work; Cuttuck; in the centre a bowl surrounded with lotus leaves.
Size: Di. 8", Ht. $7\frac{1}{2}$ "
Rajasthani. Twentieth Century. 882
1016. TUMBLER — perforated and embossed with birds.
Size: Ht. $5\frac{1}{2}$ "
Rajasthani.
1017. ORNAMENT — for neck; used by the women; *Pañchmānya*.
Size: L. 18"
Rajasthani. 283

1018. PEACOCK.
Size : L. 25"
Rajasthani. Twentieth Century.
1019. BOX — with cover and supported by three crocodiles; embossed figure of Ganeśa on the top.
Size : Di. 5"
Rajasthani. Twentieth Century. 851
1020. BOWL — parcel gilt; with engraved ornament.
Size : Di. 4½"
Rajasthani. 848
1021. ROSE WATER SPRINKLER — *Gulābdāni*; with peacocks on sides.
Size : Ht. 11"
Rajasthani. Twentieth Century.
1022. ROSE WATER SPRINKLER — with mangoes and parrots on sides.
Size : Ht. 11"
Rajasthani. Twentieth Century.
1023. DANDA — boys play on *Ganeśa Chauth*.
Size : L. 10½"
Rajasthani. Twentieth Century.
1024. ATTARDĀN — Parcel gilt; in centre a bowl supported by a pigeon carrying a flower in its mouth. Four small bowls on sprays spring from the base. The stand polished to imitate water; and has a gilt border from which green glass beads are pendant.
Size : Di. 6", Ht. 5"
Rajasthani. Twentieth Century. 854
1025. ROSE WATER SPRINKLER.
Size : Ht. 10½"
Rajasthani.
1026. SĀRI PIN — in a beautiful rose pattern.
Size : 1" × ¾"
Rajasthani.
1027. ATTARDĀN — with leaves and branches hanging down like a tree.
Size : Ht. 12"
Rajasthani.
1028. NECK ORNAMENT — *Hansli*; silver, set with garnet.
Size : Di. 6"
Rajasthani. 6679

1029. NECKLACE of Six garnet beads and five silver-shaped pendants set with garnets.
Size: L. $7\frac{1}{4}$ " 6680
1030. SALVER — circular; border perforated; set with garnets and engraved.
Size: Di. 7"
Rajasthani. 6678
- 1031- SĀRI PINS — set in the forms of scarf set with garnets.
1032. Size: $1\frac{1}{2}$ " \times 3"
Rajasthani.
1033. BANGLE — set with garnets.
Size: Di. $2\frac{1}{2}$ "
Rajasthani. 6688
1034. FLOWER — five, set with garnets attached to branches.
Size: Ht. 3"
Rajasthani. 6707
1035. BROOCH — or Breast pin; Horse-shoe-pattern set with garnets.
Size: Di. $1\frac{1}{4}$ "
Rajasthani. 6711
1036. SCARF PIN — set with garnets.
Size: L. $1\frac{1}{2}$ "
Rajasthani. 6702
1037. SCARF PIN — in a form of a scarf set with garnets.
Size: L. $1\frac{3}{4}$ "
Rajasthani.
1038. SCARF PIN — circular; flower pattern.
Size: L. $1\frac{1}{4}$ "
Rajasthani.
1039. BRACELET — of flowers linked together; set with garnets.
Size: L. 8"
Rajasthani. 6691
1040. SCARF PIN — elephant form set with garnets.
Size: L. $1\frac{1}{2}$ "
Rajasthani.
1041. SĀRI PIN — in the form of a flower linked in a branch.
Size: L. $2\frac{3}{4}$ "
Rajasthani. 6706
- 1042- BANGLE — set with garnets.
1043. Size: Di. $2\frac{1}{4}$ "
Rajasthani. 6685-86

1044. BRACELET — set with garnets; perforated.
Size : Di. $2\frac{1}{2}$ "
Rajasthani. 6693
1045. BRACELET — of oval garnet piece set in silver and strung together.
Size : L. $5\frac{1}{2}$ "
Rajasthani. 6692
1046. SARI PIN — set with 11 garnets.
Size : L. 2"
Rajasthani. 6690
1047. SCARF PIN — Butter-fly pattern; set with garnets.
Size : L. $2\frac{1}{4}$ "
Rajasthani. 6697
1048. NECKLACE — with double row of large stones.
Size : L. 17"
Rajasthani. 3625
1049. NECKLACE — with round and fish-shaped pendants.
Size : L. $17\frac{1}{2}$ "
Rajasthani. 3623
1050. NECKLACE.
Size : L. $18\frac{1}{2}$ "
Rajasthani. 3622
1051. NECKLACE — chain with square and triangular pendant.
Size : L. $18\frac{1}{2}$ "
Rajasthani. 3621
1052. NECKLACE — with small round garnet.
Size : L. $17\frac{1}{2}$ "
Rajasthani. 3626
1053. BRACELETS — garnet silver-mounted.
1056 Size : L. $9\frac{1}{2}$ ", 9", 11" and $8\frac{1}{4}$ "
Rajasthani. 3757-60
1057. BRACELET.
Size : L. $7\frac{1}{2}$ "
Rajasthani. 3727
1058. NECKLACE.
Size : L. 17"
Rajasthani. 3658
1059. BRACELET.
Size : L. 9"
Rajasthani. 3726

1060. BRACELET.
Size : L. 7"
Rajasthani. 3728
- 1061- BRACELETS.
1066. Size : Di. 2½"
Rajasthani. 3538-3643
1067. BRACELET.
Size : L. 6½"
Rajasthani. 3725
1068. SĀRI PIN — in the form of a circular button.
Size : L. 2½"
Rajasthani. 6689
1069. BANGLE — set with garnets.
Size : Di. 2½"
Rajasthani. 6687
1070. HUKKAH — Filigree work; chains hanging down and Nai
turned upside down.
Size : Ht. 20"
Rajasthani.

SILVER WORK

Section — B

1071. HUKKAH — pharsi; six medallions in the centre ornamented in floral designs; the bottom fringe ornamented.
Size : Di. 12"
Indian.
1072. DRINKING CUP — *Ābkhora*; parcel gilt; fine engraved ornamentation.
Size : Ht. 4½"
Kashmir. Twentieth Century. 856
1073. CUP — pedestal engraved; parcel gilt.
Size : Di. 2½" Ht. 2½"
Kashmir. Twentieth Century. 853
1074. CUP — gourd shaped; *Tumbi*; engraved ornament.
Size : Ht. 4½"
Kashmir. Twentieth Century. 855
1075. SUGAR BASIN — Kang-shaped with handle; silver ornament; cone pattern with foliage engraved.
Size : Ht. 3½" W. 4"
Kashmir. 852
1076. CUP — Gourd shaped; *Tumbi*; silver gilt cone pattern.
Size : Ht. 4"
Kashmir. 857
1077. WATER-BOTTLE — *Surāhi*; parcel gilt; engraved ornament.
Size : Ht. 10¾"
Kashmir. 859
1078. WINE FLAGON — with snake band; foliage with snakes and birds raised on minutely engraved ground.
Size : Ht. 13½"
Kashmir. 874
1079. CLARET JUG — with snake handle; parcel gilt; cone pattern in arabesque raised medallions.
Size : Ht. 13½"
Kashmir. 873
1080. BELT — ornament silver filigree with floral ornament in Cloisonne enamel.
Size : 3" × 1¾"
Delhi. 869
1081. ATARDĀN — silver filigree with enamel cover to the inside box which contains beside the compartments for *Pāna compass*.
Size : Di. 3½"
Delhi. 868

1082. VASE — with wide mouth; repoussé ornament; foliage on mat ground; Japanese shape.
Size: Ht. 10 $\frac{1}{4}$ " Di. 5 $\frac{1}{2}$ "
Cutch. 861
1083. SALVER — Circular; border foliated embossed ornament.
Size: Di. 8"
Cutch. 885
1084. FISHES — or Antimony holders; one pair (Two).
1085. Size: L. 5 $\frac{1}{2}$ "
Bengal. 340-41
1086. TIP MOUNT — of sword scabbard; pierced foliage.
Size: L. 7 $\frac{3}{8}$ "
Bombay. 862
1087. CIGARETTE PIPE.
Size: L. 7 $\frac{1}{4}$ "
Indian.
1088. HOOKAH TOP — geometrical.
Size: Di. 4 $\frac{1}{2}$ "
Kulu. 880
1089. PEPPER CASTOR — with mythological figures in high relief in cartouches on a ground of flowers. Swami work.
Size: Ht. 3 $\frac{1}{2}$ "
Trichanapali. 221
1090. SALVER — hexagonal; fabulous bird in the centre.
Size: Di. 10 $\frac{1}{4}$ "
Tanjore. 214
1091. NECKLACE — of four rows of small imitation coins.
Size: L. 19"
Trichinapalli. 270
1092. FLOWER — ornamented; filigree work; chains hanging.
Size: L. 5"
Trichinapalli. 271
1093. RAT.
Size: L. 7"
Mathura.
1094. HORSE.
Size: Ht. 3 $\frac{1}{2}$ "
Mathura.

1095. BEAR.
Size : Ht. $2\frac{1}{2}$ "
Mathura.
1096. HORSE.
Size : Ht. $2\frac{1}{2}$ "
Mathura.
1097. ELEPHANT.
Size : Ht. $3\frac{1}{2}$ "
Mathura.
1098. DEER.
Size : Ht. 3"
Mathura.
1099. MONKEY.
Size : Ht. $3\frac{1}{4}$ "
Mathura.
1100. TIGER.
Size : Ht. $2\frac{3}{4}$ "
Mathura.
1101. PEACOCK.
Size : Ht. $3\frac{1}{4}$ "
Mathura.
1102. PARROT.
Size : Ht. $2\frac{1}{4}$ "
Mathura.
1103. PEACOCK.
Size : Ht. $3\frac{1}{4}$ "
Mathura.
1104. LOCKET — with chain silver.
Size : L. 16"
Indian. 225
1105. SLOW MATCH HOLDER — for lighting cigars.
Size : L. $6\frac{1}{2}$ "
Indian. 223
1106. BRACELET — with six figures on separate pieces.
Size : $3" \times 2\frac{1}{2}"$
Indian. 224

SILVER WORK

Section — C

1107. BOX — *Hippawa*; repoussé; the horns at the end terminate in dragon's head; on the lids and sides are figures in the midst of foliage.
Size: L. 5½"
Ceylon. 870
1108. BRACELET — repoussé; foliage.
Size: Di. 3"
Ceylon. 863
- 1109-1110. SPOON — one pair; like apostle, spoons with images at the top and base of shaft.
Size: L. 6"
Ceylon. 886-87
1111. SALVER — circular; outer border scrolls of foliage with figures; inner border foliage with gilt ground; centre composed of four raised Swans with interturned peaks on a gilt ground.
Size: Di. 9½"
Ceylon. 883
1112. BOX — oblong; with rounded ends. Lid ornamented with foliage in repoussé; sides with animals and flowers chased and in low relief.
Size: 4½"
Ceylon. 867
1113. BOX — oval; *Hippawa*; with high lid; repoussé; an animal's head in the midst of foliage on the lid and sides; chased animals and foliage at the bottom.
Size: L. 2½"
Kandi, Ceylon. 865
1114. BOX — oval; *Hippawa*; repoussé; an elephant's head in the centre of the lid with birds in the midst of foliage.
Size: L. 4½"
Ceylon. 871
1115. SUGAR BASIN — repoussé.
Size: Ht. 3½"
Burmah. 7916
1116. CREAM JUG — repoussé.
Size: Ht. 3½"
Burmah. 7918
1117. BOWL — repoussé.
Size: Ht. 2½", Di. 3½"
Burmah. 7917

1118. BOWL — repoussé; formed of three Kailins or dragons.
Size: Ht. $2\frac{1}{2}$ " Di. $3\frac{1}{2}$ "
Burmah. 4315
1119. BOWL — formed of three griffins.
Size: Ht. $2\frac{1}{2}$ " Di. $3\frac{1}{2}$ "
Burmah. 4312
1120. BOWL — repoussé.
Size: Ht. $2\frac{1}{2}$ " Di. $3\frac{1}{2}$ "
Burmah. 7911
1121. FLAGON — the bowl is double. The inner one is smooth, the outer is composed of figures in relief with pierced and chased foliage. The stem is a female figure standing on a base on which is a Burmese inscription.
Size: Ht. $9\frac{1}{4}$ "
Burmah. 866
1122. NECKLACE.
Size: L. 11"
Burmah. 331
1123. SALT CELLAR.
Size: Ht. $3\frac{1}{4}$ "
Burmah. 222
1124. HOOKAH MOUTHPIECE.
Size: L. $3\frac{3}{4}$ "
Burmah. 322
1125. BROOCH — betel-shaped; filigree work.
Size: L. $2\frac{1}{2}$ "
Burmah. 318
1126. DALIZAN — or forehead ornament, made up of a net-work of small round filigree ornaments hanging from a broad interwoven band; used as a necklace in Europe.
Size: L. 16"
Burmah. 384
1127. WATER LADLE — used by a minister of the Burmah.
Size: L. 14"
Burmah. 338
1128. NECKLACE — fine wire work; twisted.
Size: L. 10"
Burmah. 333
1129. BOWL — repoussé; a series of figures in high relief in niches in the midst of foliage surrounding the bowl.
Size: H. $7\frac{1}{2}$ " Di. $10\frac{1}{4}$ "
Burmah. 864

1130. BOWL — repoussé.
Size : Ht. $2\frac{1}{2}$ " , Di. $3\frac{1}{4}$ "
Burmah. 7915
1131. BOWL — repoussé.
Size : Ht. $2\frac{1}{2}$ " , Di. $3\frac{1}{4}$ "
Burmah. 7912
1132. NECKLACE — of oblong plaques with several cross pendants;
filigree work.
Size : L. 17"
Dacca.
1133. BROOCH — floral pattern; filigree work.
Size : L. 2"
Dacca.
1134. EARRING — filigree work.
Size : L. $1\frac{1}{4}$ "
Dacca.
1135. EARRING — filigree work.
Size : L. $1\frac{3}{4}$ "
Dacca.
1136. EAR PENDANT — flower-shaped.
Size : L. 2"
Dacca.
1137. EAR PENDANT — flower-shaped; filigree work.
Size : L. 2"
Dacca.
1138. NECKLACE — of square plaques; filigree work.
Size : L. 12"
Dacca.
1139. HAIR PINS — (Three) butter-fly shaped; filigree work.
1141. Size : L. $2\frac{1}{2}$ "
Dacca.
1142. EARRING — filigree work.
Size : L. $1\frac{1}{2}$ "
Dacca.
1143. EARRING — filigree work.
Size : L. $1\frac{1}{4}$ "
Dacca.
1144. BRACELET — filigree work.
Size : Di. $2\frac{1}{4}$ "
Dacca.

1145. BRACELET — filigree work.
Size : Di. $2\frac{1}{4}$ "
Dacca.
1146. BRACELET — floral pattern; filigree work.
Size : Di. $2\frac{1}{4}$ "
Dacca.
1147. BRACELETS (one pair) — filigree work.
1148. Size : Di. $2\frac{1}{4}$ "
Dacca.
1149. HAIR PINS (one pair) — filigree work; butterfly-shaped.
1150. Size : L. $2\frac{1}{2}$ "
Dacca.
1151. HAIR PIN — arrow-shaped.
Size : L. $4\frac{1}{2}$ "
Dacca.
1152. NECKLACE — oval plaques with cross pendant.
Size : L. $12\frac{1}{4}$ "
Dacca.
1153. NECKLACE — of floral plaques with chains; filigree work.
Size : L. $12\frac{3}{4}$ "
Dacca.
1154. HAIR ORNAMENT — with chains and pendants; filigree work.
Size : L. $4\frac{1}{4}$ "
Dacca.
1155. TRAY — circular; filigree work.
Size : Di. 7"
Dacca.
1156. HUKKAH — having fire pot downwards and the water upwards connected with tubes running down making its feet leaves emerging out on the top and the bottom, gold plated. Nai made of cloth done in *Neem Zari*, having the mouth piece in the form of a female hand.
Size : Ht. 20"
Punjab.
1157. NECKLACE — with large Dalizan; triangular pendant.
Size : L. 16"
Burmah.

1158. TEA SPOON — gilt wire. Bowl circular; handle ends in three circles.
Size: L. $4\frac{1}{2}$ "
Norway. 7595
1159. TEA SPOON — gilt wire. Bowl with five curved sections with translucent enamel. Handle ends in three leaves.
Size: $4\frac{1}{2}$ "
Norway. 7596
1160. SPOON — blade gilt wire and translucent enamel handle; open work; wire, with enamelled leaves.
Size: L. $8\frac{1}{2}$ " W. blade $2\frac{3}{4}$ "
Norway. 7593
1161. TEA SPOON — gilt wire; blade oval; handle terminated in a flower and a scroll of leaves is entwined round it.
Size: L. $4\frac{3}{4}$ "
7593
1162. SALT CELLAR — triangular; parcel gilt and enamel.
Size: L. $2\frac{1}{4}$ "
Norway. 7597
1163. DISH — oval with handles resting on volutes of wire, supported by four feet; silver wire; parcel interstices filled in with translucent enamel.
Size: L. $16\frac{1}{2}$ " W. 3" Ht. $1\frac{1}{4}$ "
Norway. 7594

ENAMEL WORK

Section — A

1164. TUMBLER — silver champleve.
Size : Ht. Di. $1\frac{1}{4}$ "
Rajasthani. 771
1165. CUP — with cover and handle; silver champleve enamel;
ornamented with four medallions with animal subjects.
Size : Ht. $4\frac{1}{2}$ "
Rajasthani. 772
1166. CUP — with cover pyriform; *Abkhorā*; silver champleve enamel;
ornamented with four medallions with animal subjects.
Size : Ht. $5\frac{1}{2}$ " Di. $3\frac{1}{4}$ "
Rajasthani. 773
1167. INK STAND — in the form of a boat with a peacock's head.
The pen forms the mast silver champleve enamel.
Size : Lt. $6\frac{1}{2}$ " Ht. $5\frac{1}{2}$ "
Rajasthani. 802
1168. HANDLE — of a devotee's crutch; blue enamel ground encrusted
with ornament in gold on iron.
Size : $4\frac{1}{2}$ " \times $3\frac{1}{2}$ "
Rajasthani. 803
1169. TRAY — silver enamel; four medallions of hunting subjects.
Size : Di. $7\frac{1}{4}$ "
Rajasthani. 844
1170. EYES (one pair) — for images; copper enamelled.
1171. Size : L. $2\frac{1}{4}$ "
Rajasthani. 795-96
1172. TOP OF BOX — the sosan flowers are lilies of very fine red
enamel.
Size : $2\frac{1}{4}$ " \times $1\frac{1}{4}$ "
Rajasthani. 240
1173. BRACELET — round in section; terminates in the heads of
two dragons; *Azdaha*.
Size : Di. $2\frac{1}{2}$ "
Rajasthani. 239
1174. FINGER RING — made in the shape of fish united by their
heads and tails.
Size : Di. 2 cms.
Rajasthani. 248
1175. BROOCH — or clasp.
Size : L. $2\frac{1}{4}$ "
Rajasthani. 242

1176. CHARM — a plaque with the foot-prints of Krishna as worshipped at Nathdwara on one side and the words *Sri-Nath* or the *Holi-Lord* on the other side.
Size: $1\frac{1}{4}'' \times 1''$
Rajasthani. 245
1177. BRACELET — port bonheur.
Size: Di. $2\frac{1}{4}''$
Rajasthani. 243
1178. CHARM — mango-shaped gold enamel.
Size: Lt. $1''$
Rajasthani. 246
1179. BELT — Quasi enamel.
Size: $13'' \times 10\frac{1}{2}''$
Rajasthani. 268
1180. NECKLACE — with three gold star-shaped pendants.
Size: L $3\frac{1}{4}''$
Rajasthani. 247
1181. NECKLACE — of seven octagonal and two obovate plaques, with a fringe of fish-shaped pendant to which are attached tassels of pearls and blue beads. The front discs of the plaques are set with large dark green crystals in imitation of emeralds, but the backs are more beautiful as they are enamelled in the best style.
Size: L $8\frac{1}{2}''$
Rajasthani. 237
1182. WHISTLE (one pair).
1183. Size: L. $1\frac{1}{4}''$
Rajasthani. 251-52
1184. FINGER RING.
Size: Di. 2 c.m.
Rajasthani. 249
1185. FLAT LOCKET — oval; gold enamelled.
Size: $\frac{3}{4}'' \times \frac{1}{4}''$
Rajasthani. 339
1186. CUP — with cover and handle; the lower margin top of cover and handle are set with diamonds. There are five oval medallions on the cup and six heart-shaped ones on the cover. The ornament is chiefly floral but there are two sporting subjects on the cover. A good example of the best class of work, not too overloaded with ornament. Made by Ghoma Singh, Sikh.
Size: Ht. $4\frac{1}{2}''$
Jaipur, Rajasthani. 236

1187. PLATE — enamelled.
Size : Di. $3\frac{1}{4}$ "
Rajasthani. 241
1188. BELT — Silver-gold-plated enamel.
Size : L. $23\frac{1}{2}$ "
Rajasthani.
- 1189- EAR PENDANTS — golden, studded with turquoise and
1190. white gems.
Size : Ht. 6"
Rajasthani.
1191. BOX — Designed with Lion attacking deer on the top human
figures, enamelled.
Size : $3\frac{1}{2}$ " \times $2\frac{1}{4}$ "
Rajasthani.
1192. SALVER — with big flower vase.
Size : Di. 48", Ht. 36"
Rajasthani.

ENAMEL WORK

Section — B

1193. WATER BOTTLE — 'Surāhī'; copper enamel parcel gilt.
Size : Ht. 7"
Kashmir. 798
1194. COFFEE POT — copper enamel parcel gilt.
Size : Ht. 5½"
Kashmir. 806
1195. COFFEE POT — copper enamel parcel gilt.
Size : Ht. 6½"
Kashmir. 770
1196. SUGAR BASIN — copper enamel parcel gilt; double-handled.
Size : Ht. , Di. 4"
Kashmir. 779
1197. TUMBLER — copper enamel — lotus flowers in turquoise on blue ground.
Size : Ht. 5"
Kashmir. 776
1198. HOOKAH — Copper enamel parcel gilt.
Size : Di. 6½", Ht. 8½"
Kashmir. 804
1199. DRINKING CUP — copper enamel parcel gilt.
Size : Ht. 4½"
Kashmir.
1200. TUMBLER — Niello on silver; snake and animal pattern.
Size : Ht. 4½"
Kashmir. 777
1201. SALT CELLARS — (one pair) on feet; silver, enamel.
Size : Di. 2", Ht. 1½"
Kashmir. 774-75
1203. BOX — in the form of a temple, copper enamel.
Size : Ht. 9½"
Kashmir. 797
1204. CUP — with cover — Ābkhora; copper enamel.
Size : Ht. 4½"
Kashmir. 784
1205. SALVER — Circular — champleve enamel; copper parcel gilt.
Size : Di. 6"
Kashmir. 837

1206. HOOKAH — Figures in enamel; coconut shape; upper part separate.
Size : Ht. 9"
Kashmir.
1207. TUMBLER — copper enamel parcel gilt.
Size : Ht. 4½"
Kashmir. 780B
- 1208- TRAY — (Two) copper enamelled without gilding; square
1209. shaped with indented borders.
Size : 11" × 11"
Kashmir. 563 & 552
1210. TRAY (Brass) enamelled.
Size : Di. 10"
Kashmir. 542
1211. TRAY (Brass) — enamelled.
Size : Di. 12½"
Kashmir. 537
1212. TRAY — copper enamelled.
Size : Di. 10"
Kashmir. 539
1213. BISCUIT BOX — brass enamel.
Size : Ht. 8"
Kashmir. 614
1214. FLOWER VASE — brass enamel with three branches.
Size : Ht. 7"
Kashmir. 613
1215. TRAY — oval; brass enamel.
Size : 17" × 14"
Kashmir. 558
1216. TRAY — brass enamelled.
Size : Di. 10"
Kashmir. 548
1217. TRAY — brass enamelled.
Size : Di. 10"
Kashmir. 545
1218. WATER POT — brass enamelled.
Size : Di. 9½"
Kashmir. 591
1219. TEA POT — brass enamelled.
Size : Ht. 12"
Kashmir. 606

1220. CUP — brass enamelled.
Size : Ht. $4\frac{1}{2}$ "
Kashmir.
1221. PEN BOX — Silver parcel gilt champleve enamel. Floral pattern.
Size : L. $8\frac{1}{2}$ "
Kashmir. 764
1222. SALVER — Circular; silver parcel gilt; champleve enamel; ornamented with a band of flowers and animals round the centre.
Size : Di. $6\frac{3}{8}$ "
Lucknow. 827
1223. BOWL — Parcel gilt silver enamel; ornamented with bands of flowers and animals.
Size : Di. $2\frac{3}{8}$ "
Lucknow. 781
1224. ARM ORNAMENT — Bajuband; Silver pattern in gold with blue enamel ground.
Size : L. $3\frac{1}{4}$ "
Kangra. 782
- 1225- ARM ORNAMENTS — (One Pair) 'Bāju Joḍī'; silver enamel
1226- plaques strung together by wires.
Size : L. $5\frac{1}{4}$ "
Kangra. 833-34
1227. NECKLACE of ten oval plaques; silver enamel.
Size : L. $14\frac{1}{2}$ "
Multan. 828
1228. TUMBLER — enamel in silver (champleve).
Size : Ht. 2", Di. $2\frac{1}{4}$ "
Multan. 825
1229. VASE — with cover Ābkhora; silver enamelled (champleve).
Size : Ht. $7\frac{1}{2}$ "
Multan. 826B
1230. BRACELET — oval — silver enamel.
Size : Di. $2\frac{1}{2}$ "
Delhi. 768
1231. BRACELET — oval — silver enamel.
Size : Di. $2\frac{1}{2}$ "
Delhi. 769
1232. WAIST CLASP — silver filigree, with flower in cloissone enamel.
Size : $4" \times 1\frac{3}{4}"$
Delhi. 876

1233. CUP — enamelled blue ground; iron.
Size : Di. $5\frac{1}{4}$ "
Khasgar. 10852
1234. BELT — of 24 plaques; Enamel on glass.
Size : L. 31 "
Orisian.
1235. HEXAGONAL CUP — on stand.
Size : Ht. 3 "
Indian.
1236. CIGAR SET — containing cigar case, cigarette case, an ash tray,
a match box and a tray.
Size : 15×11 "
Indian.

ENAMEL WORK

Section — C

1237. BOWL — with Saucer; enamelled.
1238. Size : Di. $4\frac{1}{2}$ ", Cup Ht. $2\frac{1}{2}$ "
Persian. 10853-54
1239. CANDLE STICK STAND.
Size : Ht. $7\frac{1}{2}$ "
English; Eighteenth Century. 4303
1240. NECKLACE — enamelled on gold 10 pearls, 25 pendants of
semi-precious stones.
Size : L. 9"
Chinese.

BIDRI WORK

- | | | |
|-------|---|-----|
| 1241. | WATER BOTTLE — fish pattern. Size : Ht. $5\frac{1}{2}$ " Lucknow. | 102 |
| 1242. | WATER BOTTLE — with stopper fish pattern. Size : Ht. $6\frac{1}{2}$ " Lucknow. | 101 |
| 1243. | WATER BOTTLE — with stopper; Surāhī. Size : Ht. 11" Lucknow. | 99 |
| 1244. | WATER BOTTLE — with stopper; Surāhī. Size : Ht. $11\frac{3}{8}$ " Lucknow. | 97 |
| 1245. | WATER BOTTLE — with stopper; fish pattern. Size : Ht. $11\frac{1}{2}$ " Lucknow. | 98 |
| 1246. | WATER BOTTLE — with stopper; Surāhī. Size : Ht. 7" Lucknow. | 100 |
| 1247. | WATER BOTTLE — Surāhī. Size : Ht. 14" Bengal. | 474 |
| 1248. | PHARSI HOOKAH — with four large medallions, each containing a flower round its mouth. Size : Ht. 7" Bengal. | 473 |
| 1249. | HOOKAH — with four large flowers at the mouth. Size : Ht. 7" Bengal. | 482 |
| 1250. | SPITTOON. Size : Ht. $7\frac{1}{2}$ " Bengal. | 483 |
| 1251. | PAN BOX — with comical cover. Size : Ht. $5\frac{1}{2}$ ", Di. $5\frac{3}{8}$ " Bengal. | 479 |
| 1252. | TUMBLER — with cover. Size : Ht. 6" Bengal. | 478 |

| | | |
|-------|---|-----|
| 1253. | WATER POT — with cover; small 'Kulri'. Size : Ht. $3\frac{1}{2}$ " Bengal. | 489 |
| 1254. | FLAT BOX. Size : Ht. 3", Di. $4\frac{1}{2}$ " Bengal. | 490 |
| 1255. | HOOKAH — with four small medallions round its mouth. Size : Ht. $6\frac{3}{4}$ " Bengal. | 475 |
| 1256. | TRAY. Size : Di. 7" Murshidabad. | 481 |
| 1257. | TUMBLER — with cover. Size : Ht. $6\frac{1}{4}$ " Murshidabad. | 480 |
| 1258. | SALVER — oval. Size : L. $10\frac{1}{2}$ " B. $7\frac{1}{4}$ " Indian. | 202 |
| 1259. | BOX — oblong. Size : L. $4\frac{3}{8}$ ", B. $3\frac{1}{4}$ ", Ht. 3" Indian. | 203 |
| 1260. | BOX — oblong. Size : L. $3\frac{3}{8}$ ", B. $2\frac{1}{4}$ ", Ht. $1\frac{1}{4}$ " Indian. | 204 |
| 1261. | BOX. Size : L. $3\frac{1}{2}$ ", B. $2\frac{1}{4}$ ", Ht. $1\frac{1}{4}$ " Indian. | 205 |
| 1262. | SPITTOON. Size : Ht. $6\frac{1}{4}$ " Indian. | 206 |
| 1263. | TOBACCO HOOKAH. Size : Ht. $9\frac{1}{4}$ " Indian. | 207 |
| 1264. | TOBACCO HOOKAH. Size : Ht. $12\frac{1}{4}$ " Indian. | 208 |
| 1265. | SALVER — floral pattern. Size : Di. $6\frac{1}{4}$ " Indian. | 210 |

1266. SALVER — fish pattern.
Size : Di. $6\frac{3}{4}$ "
Indian. 211
1267. SALVER — In this salver more ground is shown and the floral pattern is done in small pieces of silver.
Size : Di. 7"
Indian. 212
1268. HOOKAH.
Size : Ht. 7"
Indian. 10867
1269. HOOKAH.
Size : Ht. $6\frac{1}{4}$ "
Indian.
1270. HOOKAH.
Size : Ht. $6\frac{1}{4}$ "
Indian.
1271. SALVER — fish pattern.
Size : L. 7"
Indian. 209
1272. HASTAVA — Water vessel with handle. Handsome gold diaper pattern ornament.
Size : Ht. $11\frac{1}{2}$ "
Ujjain. 388
1273. HUKKAH BOWL — circular.
Size : Ht. $7\frac{1}{2}$ "
Indian.
1274. HUKKAH BOWL — Badroon-ka-Jal in gold and silver.
Size : Ht. $7\frac{3}{4}$ "
Indian. 2280

DAMASCENING WORK

Section — A

- | | | |
|-------|--|------|
| 1275. | FLOWER VASE — Steel with gold damascened ornament. Size : Ht. 9" Rajasthani. | 5 |
| 1276. | HATCHET — worked in gold koft. Size : L. 18" Rajasthani. | 1010 |
| 1277. | WATER BOTTLE — 'Surāhī'; steel damascened in gold. Size : Ht. 6½", W. Rajasthani. | 2200 |
| 1278. | WATER BOTTLE — 'Surāhī'; steel damascened in gold. Size : Ht. 6" Rajasthani. | 2201 |
| 1279. | TRAY — Steel; damascened in gold. Size : Di. 6" Rajasthani. | 2236 |
| 1280. | TRAY — Steel; four-cornered; damascened in gold. Size : 4½" × 4½" Rajasthani. | 2237 |
| 1281. | TRAY — damascened in gold. Size : Di. 4½" Rajasthani. | 2252 |
| 1282. | TRAY — Steel; damascened in gold. Size : Di. 4½" Rajasthani. | 2253 |
| 1283. | TRAY — Steel; damascened in gold. Tahnishan work in wire inlays. Size : Di. 7" Rajasthani. | 2245 |
| 1284. | HATCHET — Gold; damascened. Size : L. 18" Rajasthani. | 1007 |
| 1285. | WATER BOTTLE — Steel; damascened in gold. Size : Ht. 4½", Width 1½" Rajasthani. | 2203 |
| 1286. | TRAY — Six cornered; steel; damascened in gold; oval-shaped. Size : 5" × 1½" Rajasthani. | 2242 |

1287. TRAY — damascened in gold.
Size : Di. $4\frac{7}{8}$ "
Rajasthani. 2240
1288. SHIELD — the ground and four bosses are covered with fine work in gold. The raised silver-plated leaves and stems are placed around the inner margin, and the bosses are surrounded by snake-like coils in gold in form of quatre foils and alternate knots. School of Arts, Jaipur.
Size : Di. $14\frac{1}{4}$ "
Rajasthani. 32
1289. SHIELD — Steel ; damascened in gold.
Size : Di. 15 "
Rajasthani. 19
1290. DAGGER — Ornamented with beautiful landscapes in damascene.
Size : L. $18\frac{1}{2}$ "
Rajasthani. 17
1291. SWORD — blade steel; side pieces of hilt are made of ivory; sheath mounted by four iron medallions done in damascene.
Size : L. 38 "
Rajasthani. 57
1292. DAGGER — blade ordinary, side guards inscribed in Sanskrit verses in damascene along with foot prints in circular spaces.
Size : L. $14\frac{1}{2}$ "
Rajasthani.
1293. CRUTCH — used by Bairāgi or Hindu devotee; pattern in gold. The head terminates in a dragon's head.
Size : L. 22 "
Rajasthani. 18
1294. SWORD STICK — 'Gupti'; the steel blade ends in a tiger-shaped handle. Ornament in bold gold diaper pattern in damascene.
Size : L. $3'$
Rajasthani. 13
1295. SWORD — curved; blade steel, upon which the name of sword maker is written; handle with knuckle guard and tip mount damascened with large flowers.
Size : L. 39 "
Rajasthani. 52
1296. SOUDAIT — moudait or straight sword; blade gajbel; embossed in goddess Kālī, outline of which is done in koft; hilt done in bold

- koft; other side of the blade bearing a circular mark inscribed in Hindi.
Size: L. 40"
Rajasthani.
- 1297- SWORD HILTS — Indian patterns damascened with gold wire.
1300. Specimen of true damascening, has a long inscription over the whole surface in honour of Devī. The others are covered with floral patterns.
Size: L. 6½" to 8"
Rajasthani. 7-10
- 1301- GAUNTLETS — (Two pairs) and chain hand guards of steel,
1304. ornamented with floral patterns; damascened in gold.
Size: L. 12"
Rajasthani. 2, 3,&.....
1305. DAGGER — elephant-fighting and dragon and stag-fighting represented in relief on steel in two halves of the blade. Side guards done in damascene.
Size: L. 18"
Rajasthani.
1306. DAGGER — Side guards worked in koft or damascene representing deer, panther, lion and flowers.
Size: L. 16"
Rajasthani. 14
1307. SWORD HILT — with knuckle guard. The head is parrot-shaped. The eyes of the birds are formed of turquoises. The ornament in bold gold, damascene work.
Size: L. 6½"
Rajasthani. 12
1308. SWORD — curved; steel; hilt done in koft or damascene; circular marks ornamented around.
Size: L. 6½"
Rajasthani.
1309. SWORD — Curved; Steel; hilt done in koft or damascene; circular marks ornamented around.
Size: L. 37"
Rajasthani. 71
1310. HELMET — with three plum-holders and nasal; damascened in gold.
Size: Ht. 7"
Rajasthani. 28
1311. CUIRASS — of four pieces forming the four mirrors or *chār āina* of the Persian ornament etc.
Size: Ht. 11"
Rajasthani. 4

DAMASCENING WORK

Section — B

1312. QAMA — done in koft or false damascening; two channels, done in the middle of the blade and Persian female figures made right down the hilt on the blade mount and sheath of iron done in silver koft.
Size : L. 14" 54
1313. JAMBIA — Arabic inscription on the blade. Iron hilt done in silver koft.
Size : L. 17" 54
1314. SWORD — steel; handle done in koft work in gold and silver; embossed flower set all over it, Kabza Hakim Khani Mohar in damascening on either side. Sheath of steel Nathli and Bundh done in koft.
Size : L. 37"
1315. SNAKE SWORD — steel; having mohars in damascening work on either side of the blade; hilt ivory.
Size : L. 33½"
1316. ARROW — steel; with gold koft ornament.
Size : L. 25"
Indian. 33
1317. SHIELD — steel; damascened in gold.
Size : Di. 15" 19
1318. SHIELD — steel; damascened on the border and bosses.
Size : Di. 15"
1319. SALVER — damascened in gold.
Size : Di. 12"
Gujarat. 536
1320. SALVER — koft gold and silver; *Gangājamni*.
Size : Di. 18"
Gujarat. 535
1321. SALVER — sides and edges damascened.
Size : Di. 12½"
Gujarat. 21
1322. SALVER — bold floral ornamentation in damascene.
Size : Di. 11½"
Gujarat. 20
1323. ANTIMONY HOLDER — fish-shaped.
Size : L. 5½"
Gujarat. 27

1324. TRAY CIRCULAR — with raised border; koft work.
Size : Di. $8\frac{1}{4}$ "
Gujarat. 30
1325. TRAY — circular.
Size : Di. $8\frac{1}{4}$ "
Gujarat. 29
1326. SALVER — with edges formed of four points alternating with four semi-circles. The surface is covered with elaborate, Arabesque ornament in gold and silver.
Size : Di. $8\frac{1}{4}$ "
1327. SILVER — with elegant curved border; koft work with judicious contrast of open and finally drawn ornament.
Size : Di. 12" 31
- 1328- SHERBET BOWL and tray; iron; richly chased and damas-
1329. cened in gold and silver. 4325-26
Size : Di. $7\frac{1}{4}$ " & $9\frac{1}{4}$ "
1330. SALVER — circular; damascened with gold and silver.
Size : Di. $21\frac{1}{4}$ " 2098

DAMASCENING WORK

Section—C

1331. DAGGER—blade curved on the end; side guards done in damascene; buffalo, lion and stag fighting.
Size: L. 21"
Persian. 497
1332. SHIELD—damascened in silver; arabesque patterns with inscriptions and figures in medallions.
Size: Di. 11"
Persian. 492
1333. SHIELD—damascened in gold with pierced medallions behind which red foil has been placed between two lines of inscription in gold. There is a broad band of engraved figures.
Size: Di. 18"
Persian. 4322-23
- 1334- SHERBET BOWL—and tray; iron; damascened in gold.
1335- Size: Di. 7½" & 9½"
Persian. 4376
1336. CHURRI—*Hancha*; set with coral and turquoise Stambul, blade done in koft representing a dome shaped floral design.
Size: L. 9"
Constantinople. 23-24
- 1337- PAPER KNIVES—ornamentation on the blade and hilts,
1338- hilts having a form of match-lock pistols. Triangular ornamentation done on the blades in koft.
Size: L. 8½"

MISCELLANEOUS METAL OBJECTS

1339. WATER BOTTLE — *Jhari*; with a brass mouthpiece.
Size : Ht. 11 $\frac{1}{4}$ "
Indian. 1642
1340. BOWL — *Kaforā*; for drinking milk.
Size : Di. 6 $\frac{1}{2}$ "
Rajasthan. 1612
1341. WATER VESSEL — *Imarati*.
Size : Ht. 3 $\frac{1}{4}$ "
Indian. 1609
1342. ROSE WATER SPRINKLER — without upper portion. Gods
and goddesses depicted in six medallions.
Size : Ht. 5 $\frac{1}{2}$ "
Indian.
1343. TRAY — silver plated; embossed; depicting an orchard and a
palace in the centre.
Size : Di. 16"
Indian.
1344. TRAY — scene of a tiger hunting a deer.
Size : Di. 8 $\frac{1}{2}$ "
Indian.
1345. DHUPDĀN — or incense burner.
Size : Ht. 5"
Indian. 2077
1346. SPITTOON — with cover.
Size : Ht. 4"
Indian.
1347. TELDĀNI OR LAMP — in the form of a handsome tazzar.
Size : Ht. 3"
Indian. 2091
- 1348-1360. SPECIMENS OF CHAMBER — water vessels used by pilgrims
to bring to their homes the sacred water of the Ganges—*Gangājal*.

A small quantity of Ganges water is poured into the mouths of the dying by Hindus, as they are supposed to be assured of salvation. The vessel has a large flattened bowl and stands on a small foot. It is sealed at the river with a lead disc.

The largest is a good example; it is engraved with figures arranged in bands as follows. The surface is divided into compartments by conventional cypress trees.

i) (1) Vishṇu and Lakshmī, (2) Hanumān bowing before Rāma, (3) Nāndī, the bull, (4) The Liṅgam, (5) Gaṇeśa.

ii). Band — The words *Jay Rāma* 'Victory to Ram' repeated many times.

iii) Band — Board 1 to 10. The ten incarnations of Viṣṇu.

Gaṇeśa, 12. Śiva from whose head flows the Ganges through the fourth and sixth bands down to the seventh where it spreads out and falls on to a tortoise, in a river representing the sacred stream.

The fifth band, according to Mr. Rivett Carnac represents the holy places in the road round Banaras symbolized by Liṅgam shrines.

Size: Ht. varies from 7" to 2½"

Indian.

9834-46

1361. KATORĀ.

Size: Ht. 1"

Indian.

1362. IMARATI — small water vessel for Ganges water.

Size: Ht. 2½"

Indian.

10034

1363. WATER POT — with spout.

Size: Ht. 3½"

Indian.

1364. ĀBKHORĀ.

Size: Ht. 3½"

Indian.

1365. IMARTI — water pot; engraved with floral pattern.

Size: Ht. 4"

Indian.

2090

1366. ROSE WATER SPRINKLER.

Size: Ht. 9½"

Indian.

1367. IMARTI — engraved with figures.

Size: Ht. 2½"

Indian.

9847

1368. BOX — circular with cover.
Size : Ht. 8"
Indian.
1369. SURĀHĪ — water bottle; flowers carved in relief in diaper fashion over the bowl.
Size : Ht. 11½"
Indian. 2041
1370. CHAMBU — the middle band is washed with copper.
Size : Ht. 8"
Indian. 9850
1371. LOTĀ — water vessel with engraved cones round the bowl.
Size : Ht. 2½"
Indian. 9848
1372. WATER VESSEL — peacock-shaped.
Size : Ht. 15"
Indian. 2092
1373. LOTĀ — water vessel.
Size : Ht. 3"
Indian.
1374. SURĀHĪ — water bottle. It has a long neck with flowers carved in relief in diaper fashion over the bowl.
Size : Ht. 11¼"
Indian. 2042
1375. SPITTOON.
Size : Ht. 4½"
Indian.
1376. HANGING BASKET — of open work; used for the reception of offerings.
Size : Ht. 11½"
Indian. 2043
1377. JĀLĪ OR CHĀLNĪ.
Size : Di. 10"
Indian.
1378. LORD GANĒṢA — God of Wisdom.
Size : Ht. 5½"
Indian. 9858
1379. CHARIOT.
Size : Ht. 14"
Indian.

- 1380- JALAHARIS — Seats for Śiva Liṅgam.
 1381. Size: Ht. 1" and 1½"
 Indian.
- 1382 HORSE — with rider.
 Size: Ht. 4½"
 Indian.
1383. WATER POT — it has a fine fluted bowl with a straight spout which springs from the mouth of a monster.
 Size: Ht. 12"
 Indian. 2040
1384. HASTAVA — with spout.
 Size: Ht. 8"
 Indian.
1385. WATER POT — with handle.
 Size: Ht. 4½"
 Indian. 2069
1386. CHAMBU — the third row in this vessel has interval vertical bands of plain and engraved ornament.
 Size: Ht. 5½"
 Indian. 9849
1387. WATER VESSEL — *Chambu*; engraved with alternate vertical ribs.
 Size: Ht. 5½"
 Indian. 2103
1388. HUKKAH VASE — pharsi; zinc; engraved in floral design.
 Size: Ht. 6½"
 Indian. 1643
- 1389- HUKKAHS — leather and brass.
 1391 Size: Ht. 9"
 Indian. 2105-2107
1392. HOOKAH BOWL — the ornament is of the kashmir shawl pattern with flowers in alternate vertical bands.
 Size: Ht. 6"
 Indian. 2282
1393. PHARSI HUKKAH — floral engraving in the middle; fishes just right above it.
 Size: Ht. 6"
 Indian. 447
1394. GLOBULAR HUKKAH — Jal Badrun pattern represented.
 Size: Ht. 9"
 Indian.

1395. HUKKAH — pharsi; ornamented in vertical designs.
Size : Ht. $8\frac{1}{4}$ "
Indian. 439
1396. HUKKAH — Ram-shaped.
Size : Ht. 7"
Indian. 2088
1397. HUKKAH and NAICHA.
Size : Ht. 10"
Indian. 561
1398. HUKKAH BASE — zink and copper; carved in the middle.
Size : Ht. 5"
Indian. 541
1399. CHILLUM — engraved in crosswise design in the middle.
Size : Ht. 3"
Indian.
1400. CHILLUM — engraved in crosswise design in the middle.
Size : Ht. $3\frac{1}{2}$ "
Indian.
1401. HUKKAH — soap stone; globular; finely carved.
Size : Ht. 9"
Indian.
1402. HUKKAH — with fire bowl; zinc, coconut shaped.
Size : Ht. $5\frac{1}{4}$ "
Indian. 565
1403. HUKKAH — with wooden naicha; made by several rings,
sockets and chillum thereupon.
Size : Ht. 27"
Indian.
1404. HUKKAH PHARSI — octagonal; embossed in flowers and
trees vertically.
Size : Ht. 6"
Indian.
1405. HUKKAH BOWL — with scroll ornament along each of the
vertical flutes.
Size : Ht. 6"
Indian. 2067
1406. HUKKAH — pharsi; square base.
Size : Ht. $7\frac{1}{4}$ "
Indian. 559
1407. SITA — brass image.
Size : Ht. $4\frac{1}{2}$ "
Indian. 9857

1408. HANDLES — for bells used in worship.
 1409. Size: Ht. 6"
 Indian. 10039-40
1410. THRONE — for idols; plated with zinc; engraved.
 Size: Ht. 4½"
 Indian. 9931
1411. ĀBKHORĀ.
 Size: Ht. 10"
 Indian.
1412. A PIECE OF NECKLACE — silver; flexible.
 Size: L. 4½"
 Indian.
1413. WATER POT — small.
 Size: Ht. 3½", Di. 3½"
 Indian. 219
1414. WATER POT — *Loṭā*.
 Size: Ht. 5½", Di. 5"
 Indian. 218
1415. SALVER — hexagonal. In the centre is a fabulous bird.
 Size: Di. 10½"
 Indian. 214
1416. PEACOCK — steel, broad expanded tail, covered with figures which are chased and engraved. Sub: A king surrounded by a court of demons and female attendants.
 Size: Ht. 3' 453
1417. INCENSE BURNER — casting a long handled cup with cover.
 Size: Ht. 10" 487
1418. JHAR'S, FRYING SPOONS.
 1419. Size: L. 19½"
1420. HOOKAH — *Chilam*.
 Size: Ht. 6"
1421. HASTAVA — with a handle and spout; engraved work.
 Size:
1422. SHRINE — silver plated; intended to contain a small clay image; used by Buddhists in Tibet; embossed in front with figures.
 Size: 9937
1423. TIN BOX — with glass inlays.
 Size: L. 8", W. 7", Ht. 4½" 1042

| | | |
|-------|--|-------|
| 1424. | BOWL — with cover. Size: Di. $5\frac{1}{2}$ " , H. 3" | 4335 |
| 1425. | BOX — Cylindrical; without cover. Size: Ht. $1\frac{3}{4}$ " , Di. $2\frac{1}{4}$ " | 4337 |
| 1426. | INKPOT — painted and lacquered. Size: Ht. $6\frac{3}{4}$ " | 4330 |
| 1427. | ORNAMENT — egg-shaped; painted; Iran. Size: L. 11" | 4324 |
| 1428. | SPITTOON — painted and lacquered; Persia. Size: Ht. 9" | 4292 |
| 1429. | BYZANTINE BOWL — used in the church service; Christ rising from the tomb. Size: Di. 6" | 4334 |
| 1430. | SALVER — inlaid with patterns in silver and gold. Size: Di. $11\frac{1}{2}$ " | 10869 |
| 1431. | SHERBET BOWL. Size: Di. $7\frac{1}{4}$ " | 4327 |
| 1432. | DRINKING CUP — <i>Ābkhora</i> . Size: Ht. 4" | 154 |
| 1433. | DRINKING CUP — <i>Ābkhora</i> . Size: Ht. $4\frac{1}{4}$ " | 155 |
| 1434. | ROSE WATER SPRINKLER — <i>Gulābdāni</i> . Size: Ht. $9\frac{1}{4}$ " | 152 |
| 1435. | DRINKING CUP — <i>Gilās</i> . Size: Ht. $4\frac{1}{4}$ " | 156 |
| 1436. | ROSE WATER SPRINKLER — <i>Gulābdāni</i> . Size: Ht. $8\frac{1}{2}$ " | 157 |
| 1437. | TRAY — plated. Size: Di. $11\frac{1}{4}$ " | 134 |
| 1438. | DRINKING CUP — with spout; white metal with flowers in brass. Size: Ht. $3\frac{1}{2}$ " | 94 |
| 1439. | ROSE WATER SPRINKLER — <i>Gulābdāni</i> . Size: Ht. $12\frac{1}{4}$ " | 113 |
| 1440. | TUMBLER — with cover; <i>Gilās</i> . Size: Ht. $6\frac{1}{4}$ " | 90 |

| | | |
|----------------|--|-----------|
| 1441. | BOX — cylindrical. Size : Ht. $2\frac{3}{4}$ " , Di. $4\frac{1}{4}$ " | 115 |
| 1442. | WATER BOTTLE — <i>Surāhi</i> . Size : Ht. $8\frac{1}{2}$ " | 108 |
| 1443. | ROSE WATER SPRINKLER — <i>Gulābdāni</i> . Size : Ht. $11\frac{3}{4}$ " | 111 |
| 1444. | WATER BOTTLE — <i>Surāhi</i> ; pattern <i>Asparagus Racemosus</i> , a climbing plant; in geometrical tracery. Size : Ht. $13\frac{1}{2}$ " | 103 |
| 1445. | TUMBLER. Size : Ht. $4\frac{3}{4}$ " | 117 |
| 1446. | TRAY. Size : Di. $11\frac{1}{2}$ " | 96 |
| 1447. | TRAY. Size : Di. $6\frac{1}{4}$ " | 107 |
| 1448. | TUMBLER — <i>Syah kalam</i> ; engraved and lacquered. Size : Ht. 6" | 89 |
| 1449. | CYLINDRICAL BOX. Size : Ht. $2\frac{3}{8}$ " , Di. $4\frac{1}{4}$ " | 110 |
| 1450. | BOX — spherical. Size : Ht. $2\frac{3}{8}$ " , Di. $4\frac{1}{4}$ " | 114 |
| 1451. | SALVER — circular. Size : Di. 15" | 106 |
| 1452. | WATER JUG — <i>Hastava</i> . Size : Ht. $17\frac{1}{4}$ " | 112 |
| 1453. | TRAY — repoussé; perforated border. Size : Di. 13" | 2534 |
| 1454. | DEVOTEE'S TONGS — a pair. Size : Ht. 36" | 2315 |
| 1455. | TONGS — a pair; carved and ornamented; used by devotees. Size : Ht. 36" | 2314 |
| 1456. | BAIRĀGĪ'S OR DEVOTEE'S CRUTCH. Size : Ht. 20" | 2307 |
| 1457- 1464. | TRAYS — eight; illustrating the various processes of making a tray from the very beginning till the work is completed and the tray is finished. Size : Di. 8" | 2439-2446 |

1465. WALL BRACKET — wooden; with metal work; painted in blue, yellow, etc.
Size: Ht. 20"
1466. COBRA OR SNAKE — holding a frog in its mouth; steel.
Size: L. 8" Ht. 4½" 2302
- 1467- HANDLES — for bells used in worship.
1470. Size: Ht. 6"
Indian. 10041-44
1471. Arghapatra: For pouring libations in honour of Suryd.
Size: Hl. 2½"
Indian.



S. N. 7.

COFFEE POT—engraved. Brass.
Rajasthani.

975 . 6

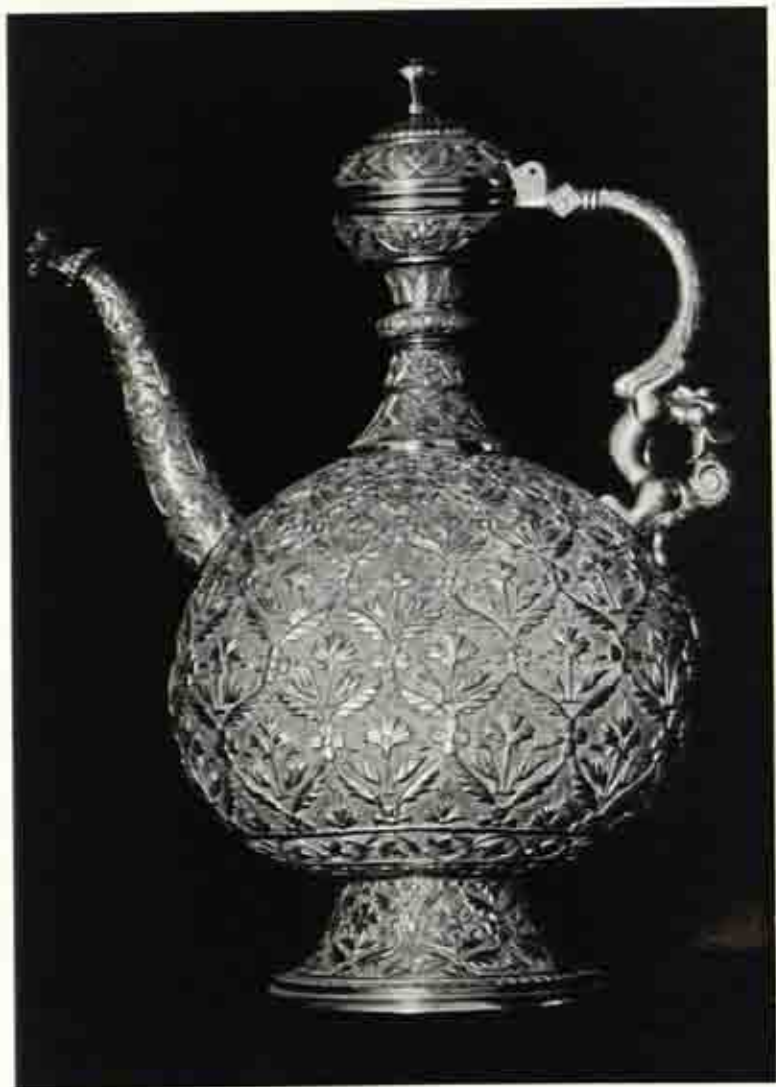




S. N. 42.

TEA-POT. Brass.
Rajasthani.

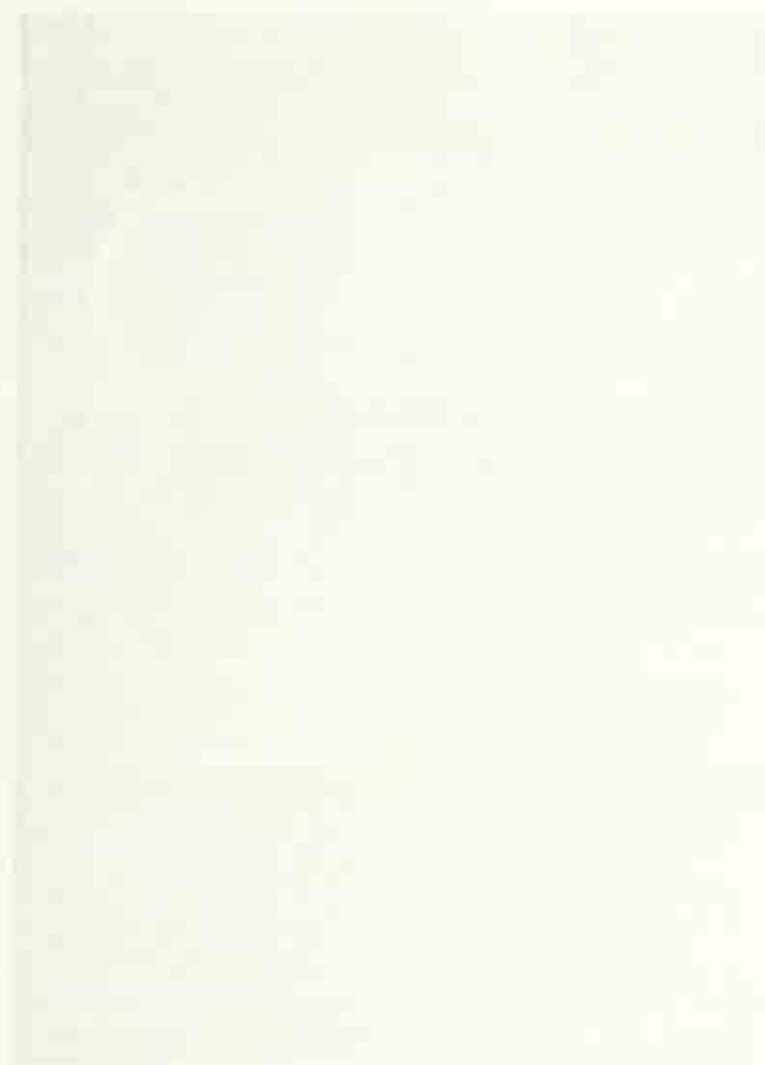
2403



S. N. 43.

EWER—with fine diaper ornament. Brass.
Rajasthani.

2448





S. N. 54.

RAMAYANA VASE. Brass.
Rajasthani.

3400





S. N. 274.

TRAY—in high relief. Brass.
Rajasthani.

2526





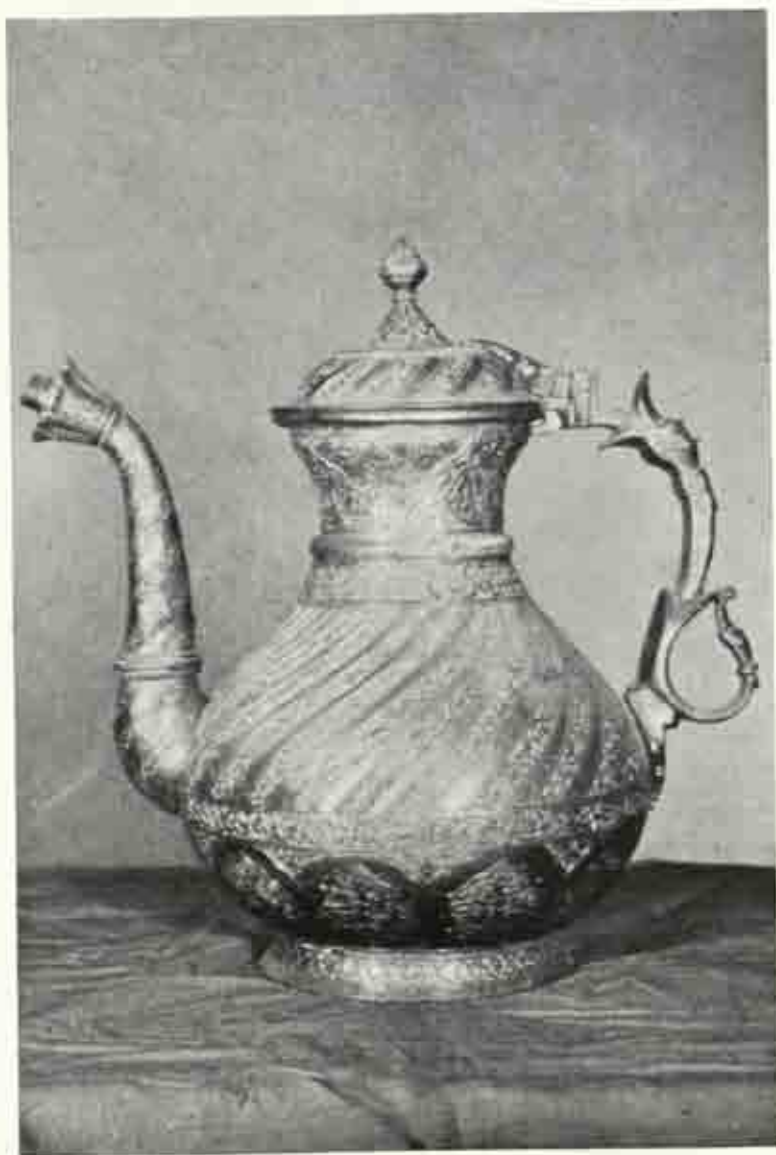
S. N. 792.

FLOWER VASE —perforated. Brass.
Persian.



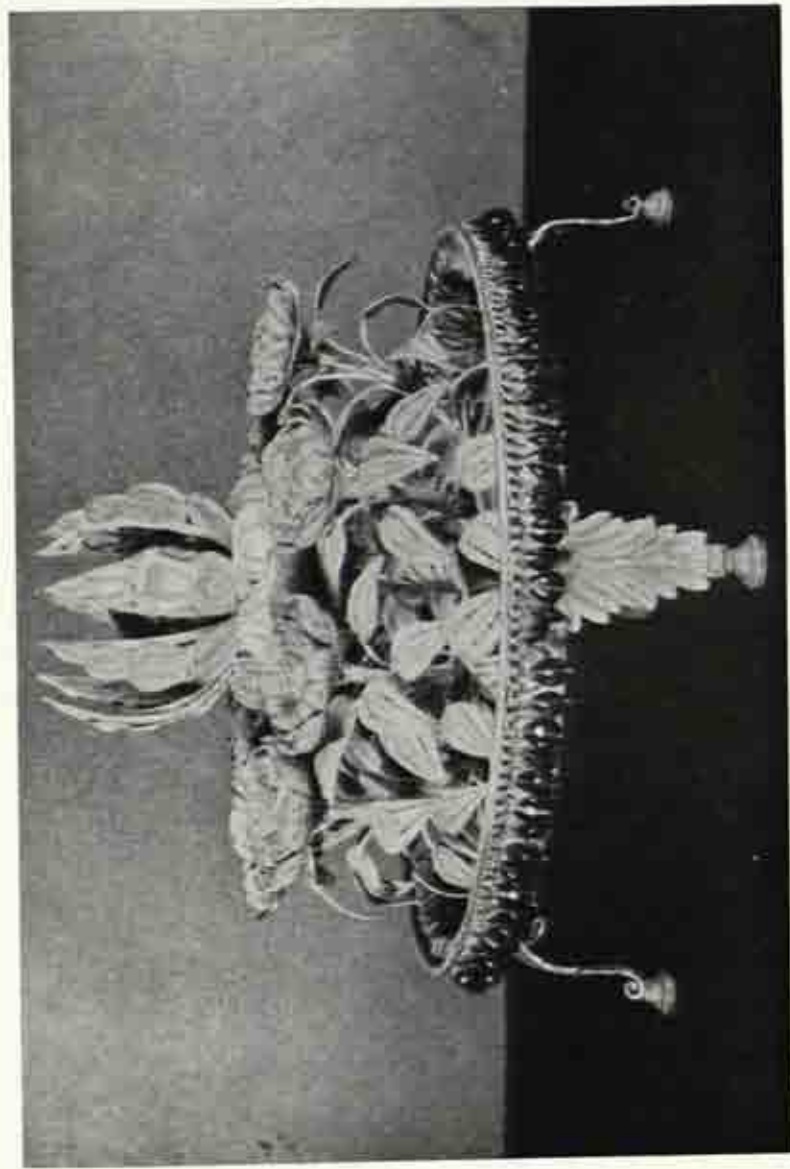
S. N. 822. SIVA & PARVATI — in an amorous pose. Brass.
Nepal.





S. N. 902. WATER POT—engraved scroll pattern. Copper.
Kashmir.

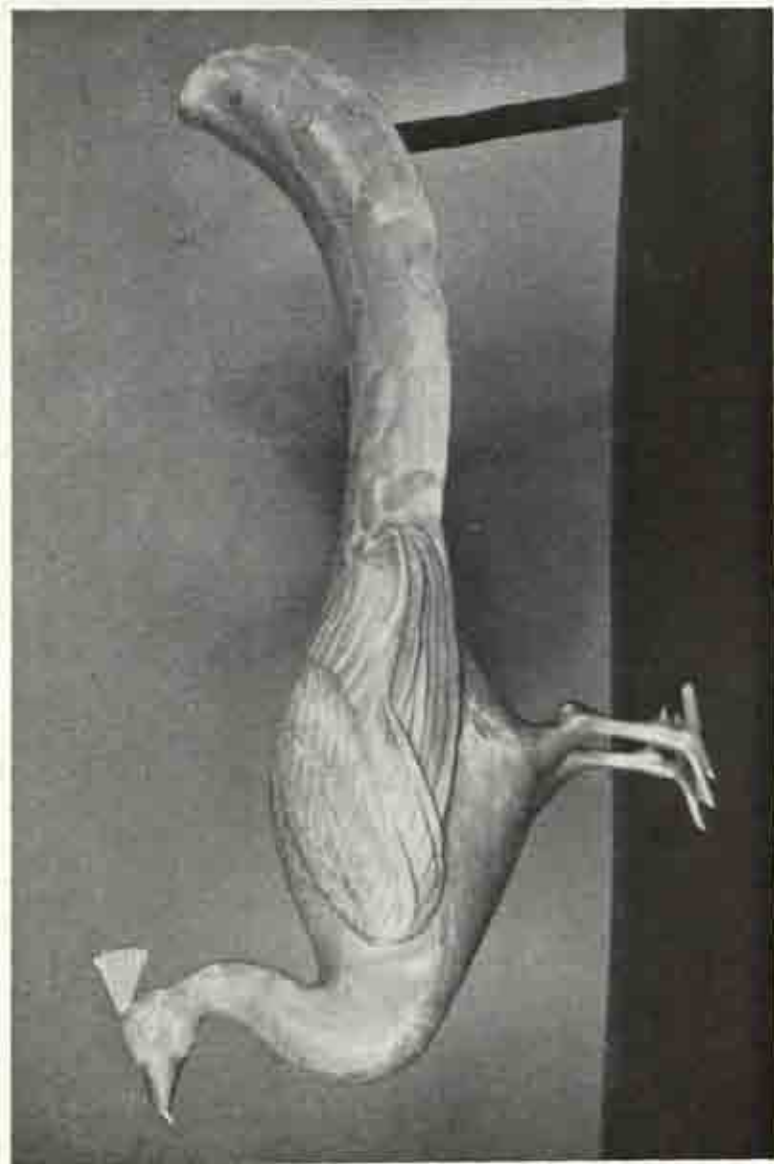




S. N. 1015.

ATTARDAN — Filigree work. Silver.
Rajasthan.





PEACOCK. Silver.
Rajasthani.

S. N. 1018.



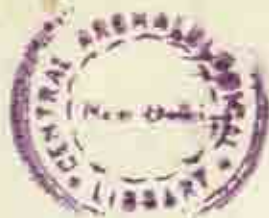


S. N. 1186. CUP—of gold, with cover and handle. Enamelled.
Rajasthani.





S. N. 1245. WATER BOTTLE—fish pattern. Bidri Work.
Lucknow.





100
3/13/75

"A book that is shut is but a block"

CENTRAL ARCHAEOLOGICAL LIBRARY

GOVT. OF INDIA
Department of Archaeology
NEW DELHI

Please help us to keep the book
clean and moving.