

GOVERNMENT OF INDIA

DEPARTMENT OF ARCHAEOLOGY

**CENTRAL ARCHAEOLOGICAL  
LIBRARY**

---

CALL No. 709.52084 Hen-Pai

D.G.A. 79.

# ORIENTAL ART

SERIES O SECTION III

## JAPANESE ART

16415

Edited by

HAROLD GOULD HENDERSON

ROBERT TREAT PAINE, JR.



709.52084

Hen/Pai

THE UNIVERSITY PRINTS

11 BOYD STREET, NEWTON, MASSACHUSETTS

GOVERNMENT OF INDIA  
DEPARTMENT OF ARCHAEOLOGY  
**CENTRAL ARCHAEOLOGICAL  
LIBRARY**

---

CALL No. 709.52084 Hen-Pai

D.G A. 79.

ORIENTAL ART

SERIES O SECTION III

JAPANESE ART

16415

Edited by

HAROLD GOULD HENDERSON

ROBERT TREAT PAINE, JR.



709.52084

Hen/Pai

THE UNIVERSITY PRINTS

11 BOYD STREET, NEWTON, MASSACHUSETTS

Received from Mrs. Mrs. C. A. Almond - 6 on 10/2/55  
Rs. 100.00

**PUBLISHER'S ACKNOWLEDGMENT**

We wish to express our appreciation of the courtesy and friendly interest of all persons and institutions called upon for help during the preparation of the Japanese Art Series. In particular we should like to acknowledge the services of: the Imperial Household Museum, Tōkyō; the Institute of Art Research, Tōkyō; Kokusai Bunka Shinkōkai, Tōkyō; Asuka-en, Nara; the Rubel Asiatic Research Bureau, the Fogg Museum of Art, Cambridge; and the Museum of Fine Arts, Boston.

**NOTE.** Names of Japanese collectors are given in the Japanese word order, in which the surname precedes the personal name.

Japanese Art Periods with corresponding dates (A.D.) are listed below for convenient reference:

Period	Date
Suiko	552-646
Hakuhō	646-710
Tempyō	710-794
Jōgan	794-897
Fujiwara	897-1185
Kamakura	1185-1392
Ashikaga	1392-1568
Momoyama	1568-1615
Tokugawa	1615-1867

**CENTRAL ARCHAEOLOGICAL  
LIBRARY, NEW DELHI.**

Acc. No. .... 16415 .....

Date. .... 28/2/59 .....

Call No. 709. 52084 Ken/Pai.

## Series O, Section III Japanese Art

EDITED BY

Harold G. Henderson of Columbia University and  
Robert T. Paine, Jr. of the Museum of Fine Arts, Boston

### ARCHAIC PERIOD (Before 552 A.D.)

- O 251 The Great Shrine (architecture) ..... Izumo

### SUIKO PERIOD (552-646)

- O 252 General View of Temple (architecture) ..... Hōryūji, Nara

#### Sculpture

- O 253 Kwannon ..... Yumedono Hall, Hōryūji, Nara  
O 254 "Kudara" Kwannon ..... Hōryūji, Nara  
O 255 Yakushi, by Tori Busshi ..... Hōryūji, Nara  
O 256 Shaka Trinity, by Tori Busshi ..... Hōryūji, Nara  
O 257 Bodhisattva in Meditation ..... Chūgūji, Nara  
O 258 Bishamonten ..... Hōryūji, Nara

#### Painting

- O 259 Tamamushi Shrine: Door ..... Hōryūji, Nara  
O 260 Tamamushi Shrine: Base ..... Hōryūji, Nara

### HAKUHŌ PERIOD (646-710)

#### Sculpture

- O 261 Tachibana Shrine: Trinity ..... Hōryūji, Nara  
O 262 Tachibana Shrine: Screen ..... Hōryūji, Nara  
O 263 Yakushi ..... Yakushiji, Nara  
O 264 Shōkwannon ..... Yakushiji, Nara

#### Painting

- O 265 Amida Enthroned (fresco) ..... Hōryūji, Nara  
O 266 Tachibana Shrine: Door (drawing)  
Kwannon (fresco) ..... Hōryūji, Nara

**TEMPYŌ PERIOD (710-794)**

- 267 Pagoda (architecture) ..... Yakushiji, Nara

**Sculpture**

- 268 Ashura ..... Kōfukuji, Nara  
 ○ 269 Bonten ..... Hokkedō, Tōdaiji, Nara  
 ○ 270 Zōchōten ..... Kaidanin, Tōdaiji, Nara  
 ○ 271 Shikkongōjin ..... Tōdaiji, Nara  
 ○ 272 Buddha, incised on lotus petal ..... Tōdaiji, Nara  
 ○ 273 Lantern Panel: Musician ..... Tōdaiji, Nara  
 ○ 274 Eleven-headed Kwannon ..... Shōrinji, Nara  
 ○ 275 Thousand-armed Kwannon ..... Tōshōdaiji, Nara  
 ○ 276 Priest Ganjin ..... Tōshōdaiji, Nara  
 ○ 277 Shōkwannon ..... Museum, Boston

**Painting**

- 278 Sūtra of Causes and Effects Scroll ..... Art School, Tōkyō  
 ○ 279 Bodhisattva Banner ..... Shōsōin, Nara  
 ○ 280 Lady Under a Tree ..... Shōsōin, Nara  
 ○ 281 Kichijōten ..... Yakushiji, Nara  
 ○ 282 Lacquer Mirror Box ..... Shōsōin, Nara

**JŌGAN PERIOD (794-897)****Sculpture**

- 283 Yakushi ..... Gangōji, Nara  
 ○ 284 Hachiman as Priest ..... Yakushiji, Nara  
 ○ 285 Eleven-headed Kwannon ..... Hokkeji, Nara  
 ○ 286 Bonten ..... Kōdō, Kyōōgokokuji (Tōji), Kyōto

**Painting**

- 287 Jizō Aureole ..... Murōji  
 ○ 288 Red Fudō ..... Myōōin, Mt. Kōya  
 ○ 289 Dainichi, detail of Mandala ..... Kojimadera

**FUJIWARA PERIOD (897-1185)**

- 290 Hōdō (architecture) ..... Byōdōin, Uji

## Sculpture

- O 291 Amida of Hōddō, by Jōchō (?) ..... Byōdōin, Uji  
 O 292 Canopy and Ceiling of Hōddō ..... Byōdōin, Uji  
 O 293 Meikira, One of the Twelve Generals ..... Kōfukuji, Nara  
 O 294 Daitoku Myōō ..... Museum, Boston  
 O 295 Ichijikinr ..... Chūsonji  
 O 296 Kichijō ..... Jōruriji  
 O 297 Gigaku mask ..... Museum, Boston

## Paintings

- O 298 Amida and Twenty-five Bodhisattvas ..... Mt. Kōya  
 O 299 Hōddō Door; Paradise Scene ..... Byōdōin, Uji  
 O 300 Nirvana ..... Kongōbuji  
 O 301 Shaka Rising from his Coffin ..... Chōhōji, Kyōto  
 O 302 Hōrokaku Mandala ..... Freer Gallery, Washington  
 O 303 Horse-headed Kwannon ..... Museum, Boston  
 O 304 Muryōrikiku ..... Mt. Kōya  
 O 305 Fugen ..... Imperial Museum, Tōkyō  
 O 306 Genji Monogatari Scroll, by Takayoshi (?)  
 Marquis Tokugawa Collection  
 O 307 Animal Caricature Scroll, by Toba Sōjō (?) Kōzanji, Kyōto  
 O 308 Shigisan Engi Scroll: Flying Granary ..... Chōgōsonshiji  
 O 309 Sūtra, dedicated by the Taira Family ..... Itsukushima  
 O 310 Landscape Screen ..... Kyōgokokuji (Tōji), Kyōto

## KAMAKURA PERIOD (1185-1392)

- O 311 Shariden (architecture) ..... Engakuji, Kamakura

## Sculpture

- O 312 Daimichi, by Unkei ..... Enjōji, Nara  
 O 313 Hossō Patriarch, by Unkei ..... Kōfukuji, Nara  
 O 314 Miroku, by Kaikei ..... Museum, Boston  
 O 315 Lantern-bearer, by Kōben ..... Kōfukuji, Nara  
 O 316 Basu-sennin ..... Sanjūsangendō, Kyōto  
 O 317 Kongōrikishi, by Jōkei (?) ..... Kōfukuji, Nara



- O 318 The Great Buddha ..... Kamakura  
 O 319 Benzaiten ..... Hachimangū, Kamakura  
 O 320 Uesugi Shigefusa ..... Meigetsuin, Kamakura  
 O 321 Aizen  
 Hachiman as Priest, by Kōshun ..... Museum, Boston

### Painting

- O 322 Descent of Amida ..... Ueno Collection  
 O 323 Descent of Amida ..... Chionin, Kyōto  
 O 324 Hashiri Fudō ..... Marquis Inoué Collection  
 O 325 Jizō ..... Metropolitan Museum, New York  
 O 326 Kōbō Daishi as a Child ..... Murayama Collection  
 O 327 Nachi Waterfall ..... Nezu Collection  
 O 328 A Rakan ..... Museum, Boston  
 O 329 Yoritomo; Mongaku. By Takanobu (?) ..... Jingoji, Kyōto  
 O 330 Kibi Scroll ..... Museum, Boston  
 O 331 Gakizōshi Scroll ..... Sōgenji  
 O 332 Thirty-six Poets Scroll, by Nobuzanē (?)  
 ex-Sataké Collection  
 O 333 Saigyō Monogatari Scroll, by Tsunetaka (?)  
 Ōhara Collection  
 O 334 Burning of the Sanjō Palace Scroll ..... Museum, Boston  
 O 335 Imperial Mounted Guards Scroll... Baron Ōkura Collection  
 O 336 Hōnen Shōnin Scroll ..... Chionin, Kyōto  
 O 337 Fast Oxen Scroll ..... Imperial Museum, Tōkyō  
 O 338 Ippen Shōnin Scroll, by Enj ..... Kankikōji, Kyōto  
 O 339 The Four Sleepers, by Mokuan  
 Marquis Maeda Collection  
 O 340 Lacquer Box ..... Museum, Boston

### ASHIKAGA PERIOD (1392-1568)

- O 341 Golden Pavilion (architecture) ..... Rokuonji, Kyōto

### Painting

- O 342 The Master Shōichi, by Chō Densu ..... Tōfukuji, Kyōto  
 O 343 Landscape, by Chō Densu (?) ..... Konchiin, Kyōto

- O 344 Catfish and Gourd, by Josetsu ..... Taizōin, Kyōto  
 O 345 Landscape, by Shūbun ..... Museum, Boston  
 Landscape, by Sesshū ..... Imperial Museum, Tōkyō  
 O 346 Winter Landscape, by Sesshū ... Imperial Museum, Tōkyō  
 O 347 Cranes under a Pine Tree, by Sesshū ... Ōhashi Collection  
 O 348 Monkeys, by Sesshū ..... Museum, Boston  
 O 349 Sage Riding a Donkey, by Shūkō ..... Museum, Boston  
 O 350 Summer Landscape, by Jasoku. Count Tokugawa Collection  
 O 351 Landscape, by Kei Shoki ..... Nezu Collection  
 O 352 Jittoku Laughing at the Moon, by Geiami  
 Museum, Boston  
 O 353 Chinese Landscape, by Sōami  
 Metropolitan Museum, New York  
 O 354 Tethered Horses and Figures ..... Museum, Cleveland  
 O 355 Keikaboku and Fukurokuju, by Masanobu  
 Museum, Boston  
 O 356 Crane, by Motonobu ..... Reijūin, Kyōto  
 O 357 Rapids, by Motonobu ..... Hara Collection  
 O 358 Boat Returning in a Storm, by Sesson ... Nomura Collection  
 O 359 Picnic under Maples, by Hideyori  
 Viscount Fukuoka Collection

**MOMOYAMA PERIOD (1568-1615)**

- O 360 Hiunkaku (architecture) ..... Nishi Honganji, Kyōto

**Painting**

- O 361 Trees and Birds (two panels of screen), by Eitoku  
 Jūkōin, Kyōto  
 O 362 White Eagle on a Pine Tree, by Eitoku ... Art School, Tōkyō  
 O 363 Peonies, by Sanraku ..... Daikakuji, Kyōto  
 O 364 Uji Bridge, by Sanraku (?) ..... Mizoguchi Collection  
 O 365 Tiger, by Tōhaku ..... Museum, Boston  
 O 366 Pine Trees, by Tōhaku ..... Viscount Fukuoka Collection  
 O 367 Chinese Landscape, by Tōgan ..... Museum, Boston  
 O 368 Crane, by Yūshō ..... Museum, Boston

## TOKUGAWA PERIOD (1615-1867)

## Architecture

- O 369 Sanbōin Garden ..... Daigoji  
 O 370 Castle ..... Nagoya  
 O 371 Tōshōgū Shrine: Yōmeimon Gate ..... Nikkō

## Painting

- O 372 Shrike on a Withered Tree, by Niten . . . . Nagao Collection  
 O 373 Deer Scroll  
     Painting, by Sōtatsu  
     Calligraphy, by Kōetsu . . . . . Mutō Collection  
 O 374 Lotus and Waterbirds, by Sōtatsu . . . . . Sakai Collection  
 O 375 Wind and Thunder Gods, by Sōtatsu . . . . Kenninji, Kyōto  
 O 376 Waves at Matsushima, by Sōtatsu  
     Freer Gallery, Washington  
 O 377 Lady Viewing Chrysanthemums, by Matabei  
     Hosaka Collection  
 O 378 Apricot Altar, by Tanyū . . . . . Museum, Boston  
 O 379 Po I and Shu Ch'i, by Naonobu . . . . . Museum, Boston  
 O 380 Cloth-bleaching Dance, by Itchō . . . . . Tōyama Collection  
 O 381 Genji Album, by Mitsunori . . . . Freer Gallery, Washington  
 O 382 Red and White Plum Trees, by Kōrin  
     Count Tsugaru Collection  
 O 383 Lacquer Ink-stone Box, by Kōrin. Imperial Museum, Tōkyō  
     Dish, designed by Kōrin, made by Kenzan  
     Museum, Boston  
 O 384 Flower Baskets, by Kenzan . . . . . Hara Collection  
 O 385 Four Sages of Mt. Shang, by Shōhaku . . . Museum, Boston  
 O 386 Hozu River, by Ōkyo . . . . . Nishimura Collection  
 O 387 Peacocks and Peonies, by Ōkyo . . . . . Emmanin, Onjōji  
 O 388 Jūben Album, by Taiga . . . . . Masuya Collection  
 O 389 Spring Landscape, by Buson . . . . . Suzuki Collection  
 O 390 Willow and Heron, by Goshun . . . . . Ueno Collection  
 O 391 Autumn Flowers, by Keibun . . . . . Kiyōumi Collection  
 O 392 Deer, by Ganku . . . . . Museum, Boston  
 O 393 Takami Senseki, by Kazan . . . . . Takami Collection

**Prints**

- O 394 Book Illustrations from *Wakoku Shōshoku Ezukushi*, by  
Moronobu ..... Museum, Boston
- O 395 Actor Matsumoto Shigemaki as a Woman, by Kiyomasu  
Museum, Boston
- O 396 Calendar Print for 1765; by Harunobu . Museum, Boston  
Lovers under Umbrella in Snow, by Harunobu  
Ledoux Collection, New York
- O 397 Coming Ashore (Triptych), by Kiyonaga  
Art Institute, Chicago
- O 398 Famous Geisha, by Utamaro . . . . . Art Institute, Chicago  
Ichikawa Ebizō IV, by Sharaku  
Metropolitan Museum, New York
- O 399 Thirty-six Views of Fuji: The Wave, by Hokusai  
Museum, Boston
- O 400 Fifty-three Stages of the Tōkaidō: Shōno, by Hiroshigé  
Museum, Boston

# The University Prints

## Series O

### GENERAL INFORMATION

**Description:** Black and white half-tone prints.

**Size:** Standard size of all University Prints,  $5\frac{1}{2} \times 8$  inches.

**Price:** Individual prints, 2 cents each.

Section I, Series O, Early Indian Art (85 prints) \$1.25.

Section II, Series O, Early Chinese Art (165 prints) \$2.50.

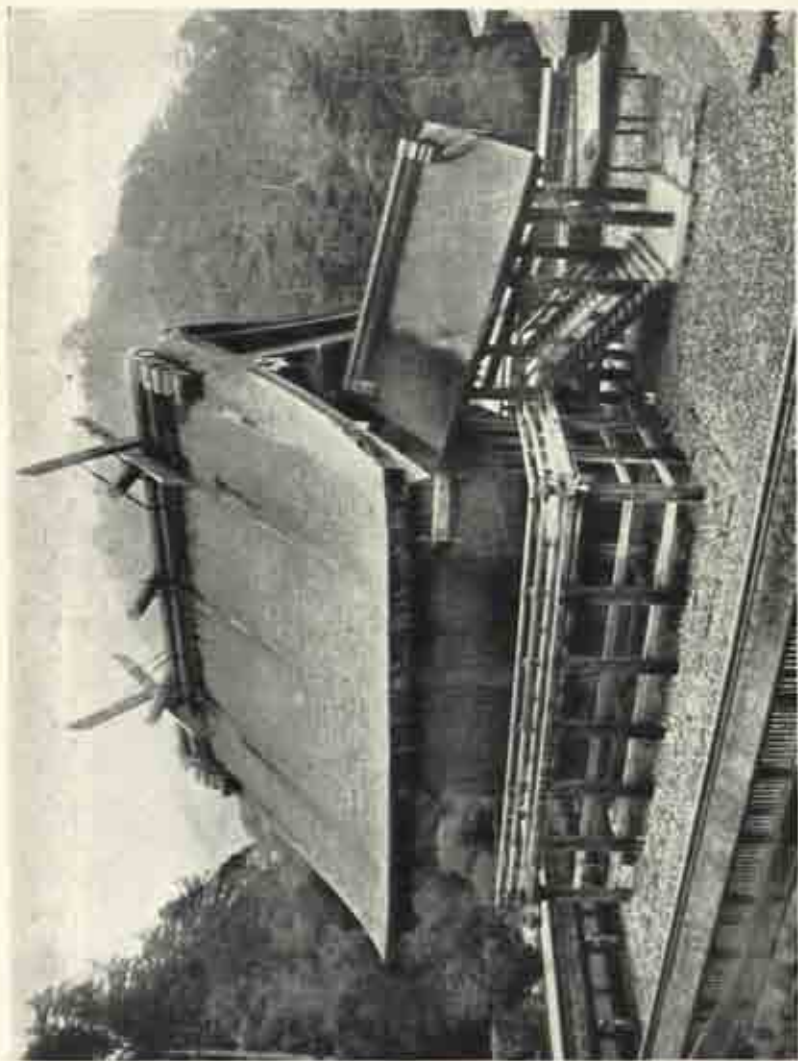
Section III, Series O, Japanese Art (150 prints) \$2.25.

**Slides:** Lantern slides (from original photographs) may be ordered by letter and number from our catalogue in either  $3\frac{3}{4}'' \times 4''$  or  $2'' \times 2''$  size. As these slides are made to order, please specify date when needed. Please indicate size.

Price of slides: 68 cents each, plus postage.







THE GREAT SHRINE OF IZUMO  
*Mimase Prefecture*

THE UNIVERSITY PRINTS  
BOSTON

STYLE OF THE ARCHAIC PERIOD  
BEFORE 551 A. D.





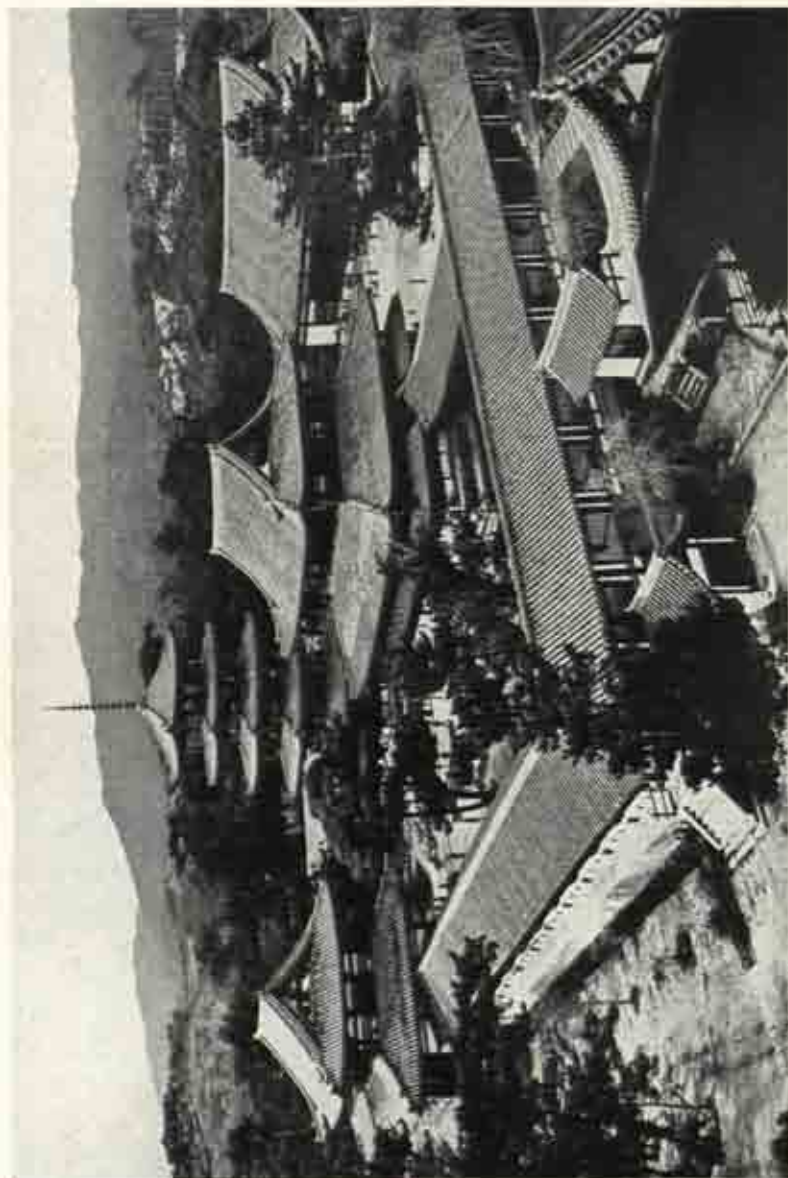


Photo. Japan Tourist Bureau

GENERAL VIEW OF HŌRYŪJI TEMPLE  
*Nara Prefecture*

THE UNIVERSITY PRINTS  
BOSTON

VII CENT.  
SUIKO PERIOD





Photo, Anliu-411

KWANNON (Wood)

*Yumedōn Hill, Hōryūji Temple*





Photos. Anjū-en

“KUDARA” KWANNON (Wood)  
*Hiragūji Temple*





Photo. Asuka-en

**YAKUSHI (BRONZE)**  
*Golden Hall, Hōryū-ji Temple*

THE UNIVERSITY PRINTS  
BOSTON

TORI BUSSHI. DATED 607  
SUIKO PERIOD



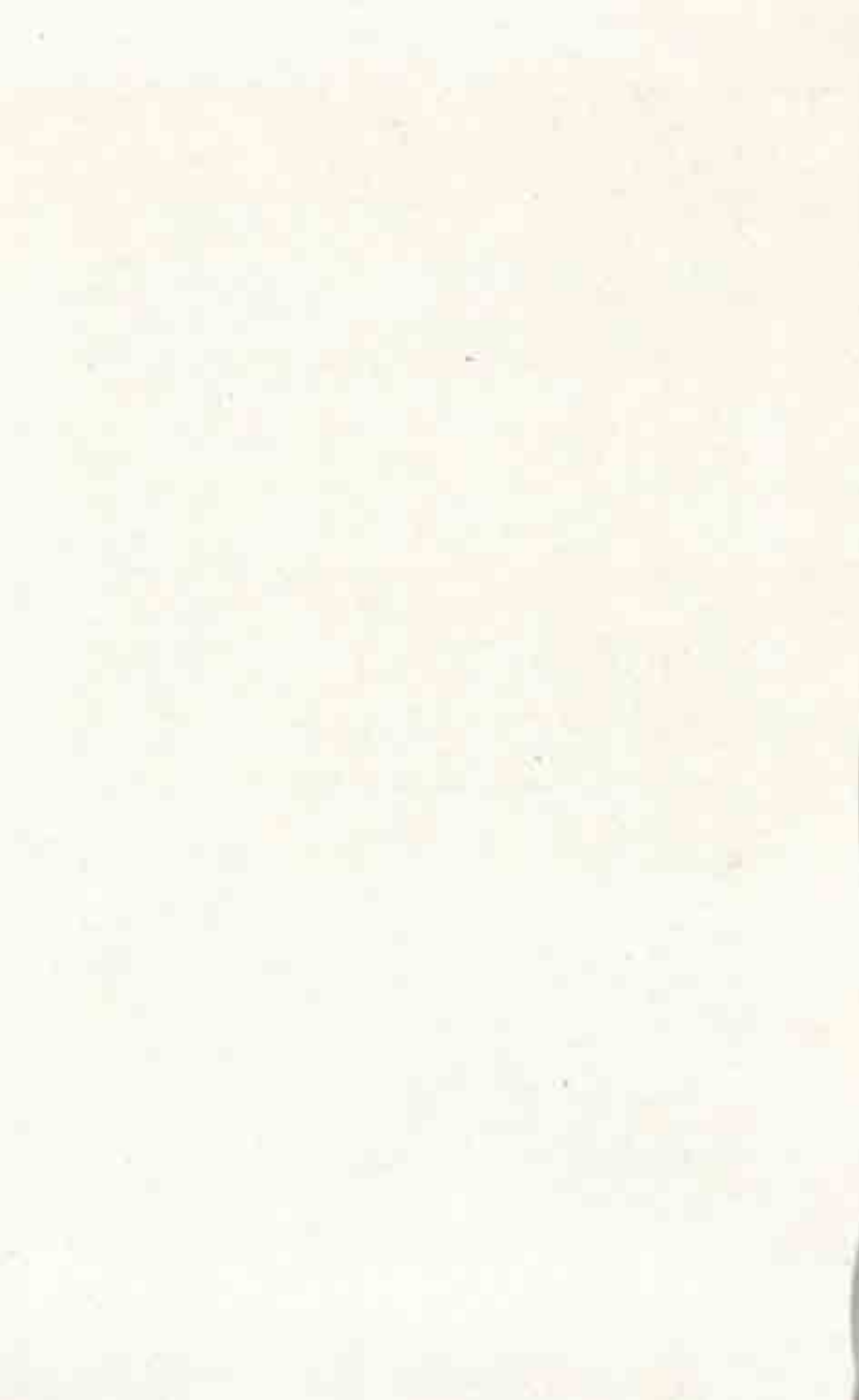




Photo: Asuka-en

**SHAKA TRINITY (Bronze)**

*Golden Hall, Hōryūji Temple*

**THE UNIVERSITY PRINTS  
BOSTON**

**TORI BUSSHI, DATED 623  
SUIKO PERIOD**





Photo: Amiko-en

**BODHISATTVA IN MEDITATION (Wood)**

*Chōgūji Nunnery, Nara Prefecture*

THE UNIVERSITY PRINTS  
BOSTON

VII CENT.  
SUIKO PERIOD





BISHAMONTEN (Wood)

*Golden Hall, Hōryūji Temple*





Photo. Anka-en

DOORS OF TAMAMUSHI SHRINE: BODHISATTVAS

*Golden Hall, Hōryūji Temple*

THE UNIVERSITY PRINTS  
BOSTON

VII CENT.  
SUIKO PERIOD





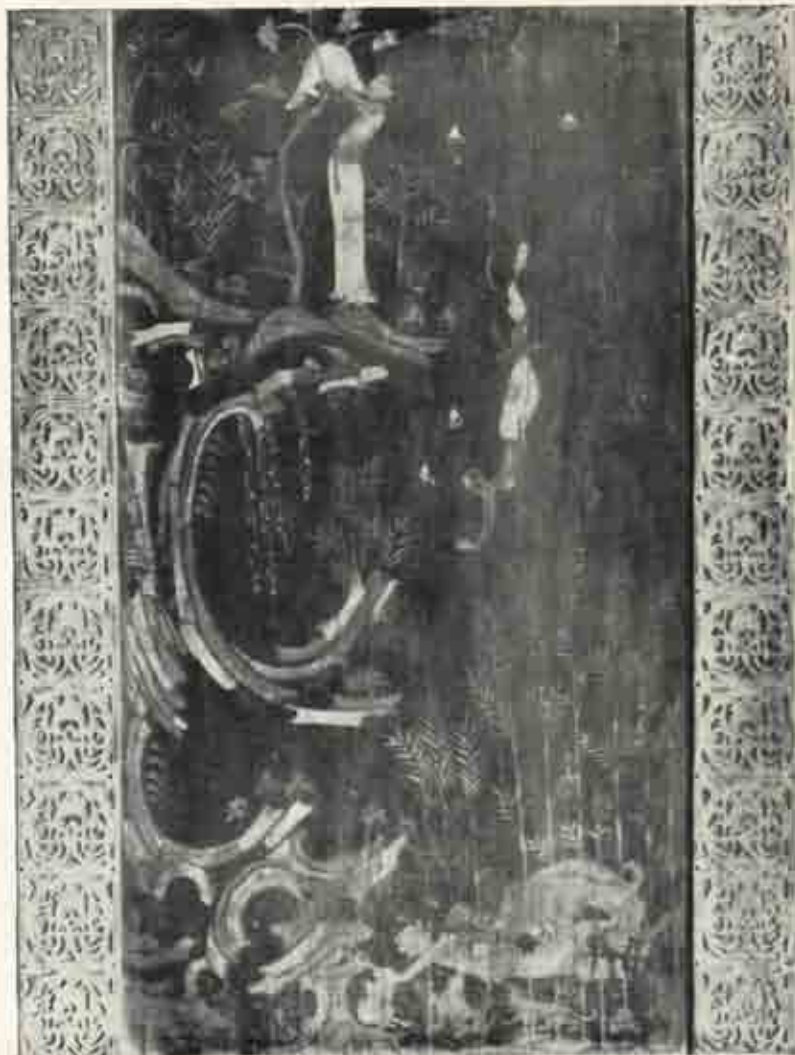


Photo. Anika-en

BASE OF TAMAMUSHI SHRINE: SACRIFICE FOR THE TIGER CUBS  
*Golden Hall, Hōryū-ji Temple*

THE UNIVERSITY PRINTS  
BOSTON

VII CENT.  
SUIKO PERIOD





Photo. Amika-en

LADY TACHIBANA'S SHRINE: AMIDA TRINITY (BRONZE)  
*Golden Hall, Hōryūji Temple*

THE UNIVERSITY PRINTS  
BOSTON

LATE VII CENT.  
HAKUHŌ PERIOD

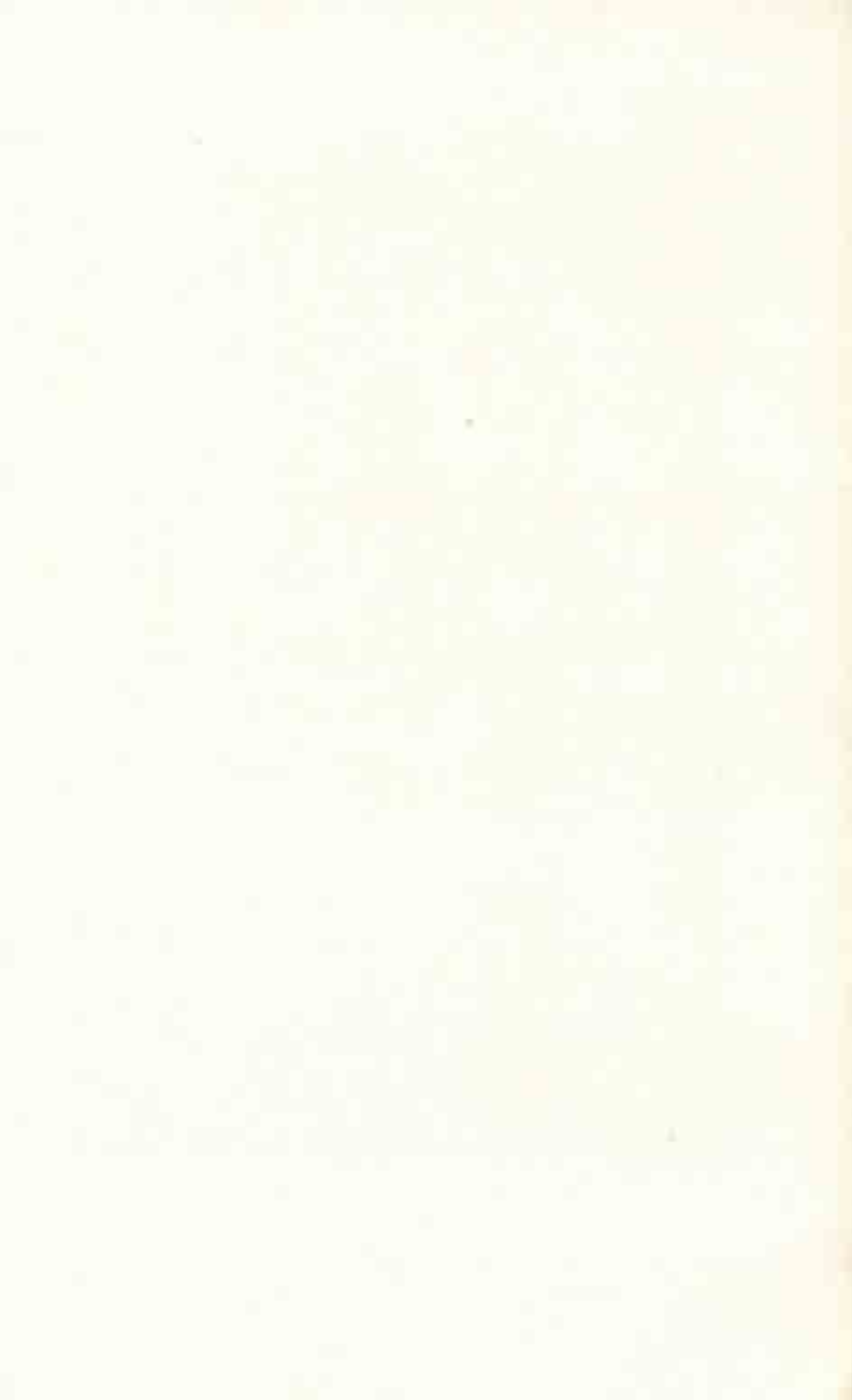




Photo. Anshu-rit

SCREEN AND HALO OF LADY TACHIBANA'S SHRINE (Bronze)

*Golden Hall, Mikoyū Temple*

LATE VII CENT.  
NAKUHO PERIOD

THE UNIVERSITY PRINTS  
BOSTON





Photo, Asuka-en

YAKUSHI (Bronze)

*Kondō, Yakushi-ji Temple, Nara Prefecture*

THE UNIVERSITY PRINTS  
BOSTON

VII—VIII CENT.  
HAKUHŌ PERIOD







Photo. Anka-en

SHŌKWANNON (Bronze)  
*Yūdō Hall, Yakushiji Temple*

THE UNIVERSITY PRINTS  
BOSTON

VII—VIII CENT.  
HAKUHŌ PERIOD





Photo. Ando-ry  
AMIDA ENTHRONED IN THE WESTERN PARADISE (Wall Painting)  
*Golden Hall, Horyū Temple*

THE UNIVERSITY PRINTS  
BOSTON

LATE VII CENT.  
HAKUHO PERIOD





*Print, Asuka-en*

TACHIBANA SHRINE  
BOOHISATTVA  
(Outline Drawing)



WESTERN PARADISE  
KWANNON  
(Wall Painting)

*Golden Hall, Hōryū Temple*

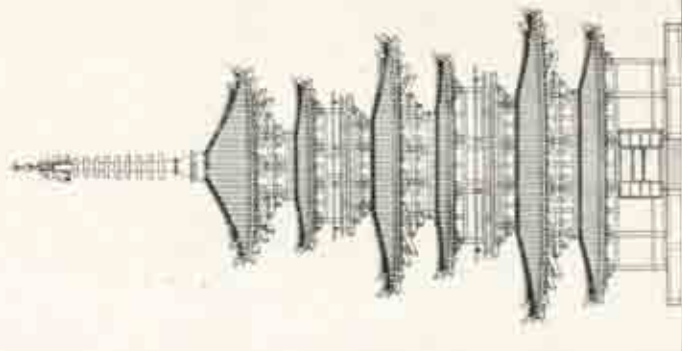
THE UNIVERSITY PRINTS  
BOSTON

LATE VII CENT.  
HAKUHŌ PERIOD



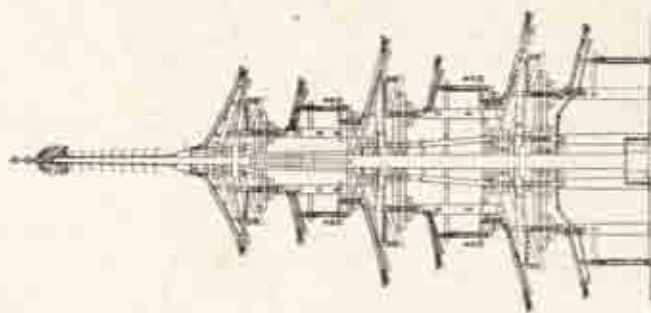


THREE-STORIED PAGODA  
*Yakushiji Temple, Nara Prefecture*



ELEVATION

THE UNIVERSITY PRINTS  
BOSTON



SECTION

EARLY VIII CENT.  
TEMPYO PERIOD







Photo. Anaka-en

ASHURA (Dry Lacquer)  
*Kōfukuji Temple, Nara*

THE UNIVERSITY PRINTS  
BOSTON

EARLY VIII CENT.  
TEMPYŌ PERIOD





Photo, Asuka-en

**BONTEN (Clay)**

*Hokkedō, Tōdaiji Temple, Nara*





Photos. Amika-en



ZŌCHŌTEN (Clay)  
*Kaidanin, Tōdaiji Temple, Nara*





Photo. Asuka-en

SHIKKONGŌJIN (Claky)  
*Hokkedō, Tōdaiji Temple, Nara*







Photo, Aniki-en

**BUDDHA IMAGE ON LOTUS PETAL (Bronze, Incised)**  
*The Great Buddha, Todaiji Temple, Nara*

THE UNIVERSITY PRINTS  
BOSTON

DATED 752  
TEMPYŌ PERIOD





Photo. Anka-en

LANTERN PANEL: HEAVENLY MUSICIAN (Bronze)  
*In front of Tōdaiji Temple, Nara*

THE UNIVERSITY PRINTS  
BOSTON

TEMPYŌ PERIOD  
710—794





Photo. Anaka-en

ELEVEN-HEADED KWANNON (Dry Lacquer)  
*Shōrinji Temple, Nara*





Photo. Asuka-en

**THOUSAND-ARMED KWANNON (Dry Lacquer)**  
*Tōkōdōji Temple, Nara Prefecture*







Photo, Asuka-en

**THE PRIEST GANJIN (Dry Lacquer)**  
*Kiisan-dō, Tōshōdai-ji Temple, Nara*





SHŌKWANNON

*Museum of Fine Arts, Boston.*





SŪTRA OF CAUSES AND EFFECTS (Detail)

Imperial School of Art, Tokyo

TEMPYŌ PERIOD  
710-794THE UNIVERSITY PRINTS  
BOSTON





Courtesy, Imperial Household Museum, Tokyo

**BODHISATTVA BANNER**  
*Shōsōin, Nara*

THE UNIVERSITY PRINTS  
BOSTON

TEMPYŌ PERIOD  
710—794







Courtesy, Imperial Household Museum, Tokyo

LADY UNDER A TREE (Screen Panel)

*Shōshū, Kato*

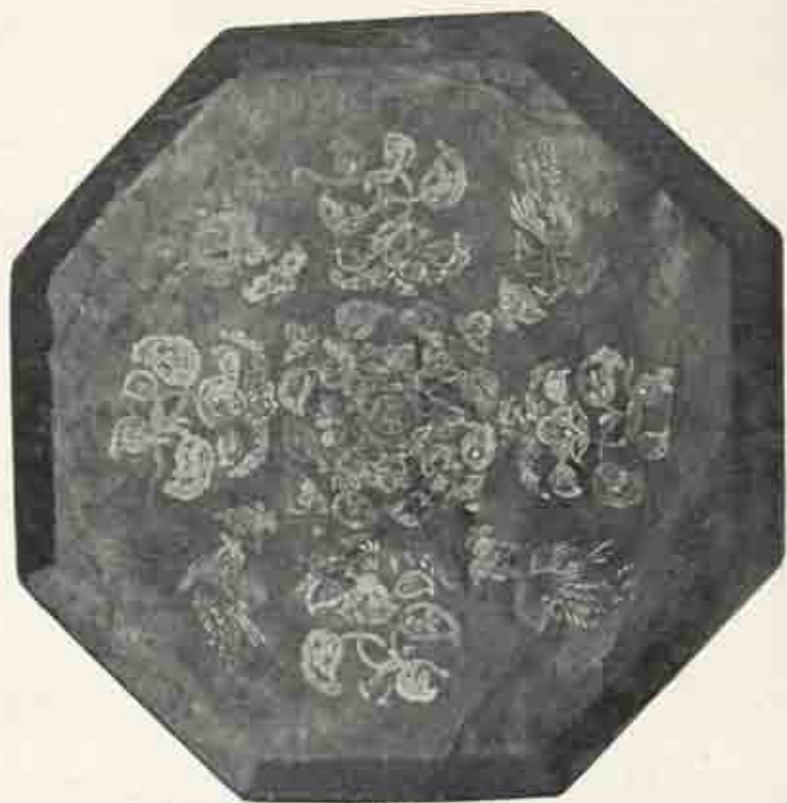




Photo. Asuka-en

KICHIJÖTEN  
*Yakuhiji Temple, Nara*





Courtesy, Imperial Household Museum, Tokyo

LACQUER MIRROR BOX  
*Shikin, Nara*

THE UNIVERSITY PRINTS  
BOSTON

TEMPYŌ PERIOD  
710-754





Photo, Anaka-ett

YAKUSHI (Wood)  
Gangji Temple, Nara







Photo. Amako-en

HACHIMAN AS PRIEST (Wood)  
*Yakushiji Temple, Nara*

THE UNIVERSITY PRINTS  
BOSTON

JŌGAN PERIOD  
794—897





Photo, Anka-en

ELEVEN-HEADED KWANNON (Wood)  
*Hokkaji Temple, Nara*





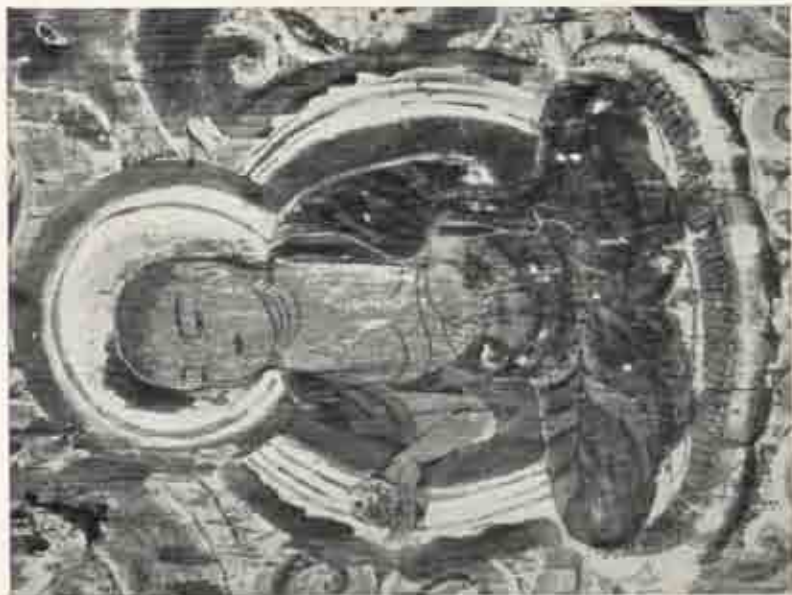
Photo. Asuka-en

**BONTEN (Wood)**  
*Kidō, Kyōōgokokuji Temple (Tōji), Kyōto*

THE UNIVERSITY PRINTS  
BOSTON

JŌGAN PERIOD  
794—897





JIZŌ AUREOLE AND DETAIL (Painted on Wood)  
*Kondo, Maruyama Temple, Nara Prefecture*



Photos. Aniki-en







RED FUDŌ

*Myōōin Temple, Mt. Kōga*





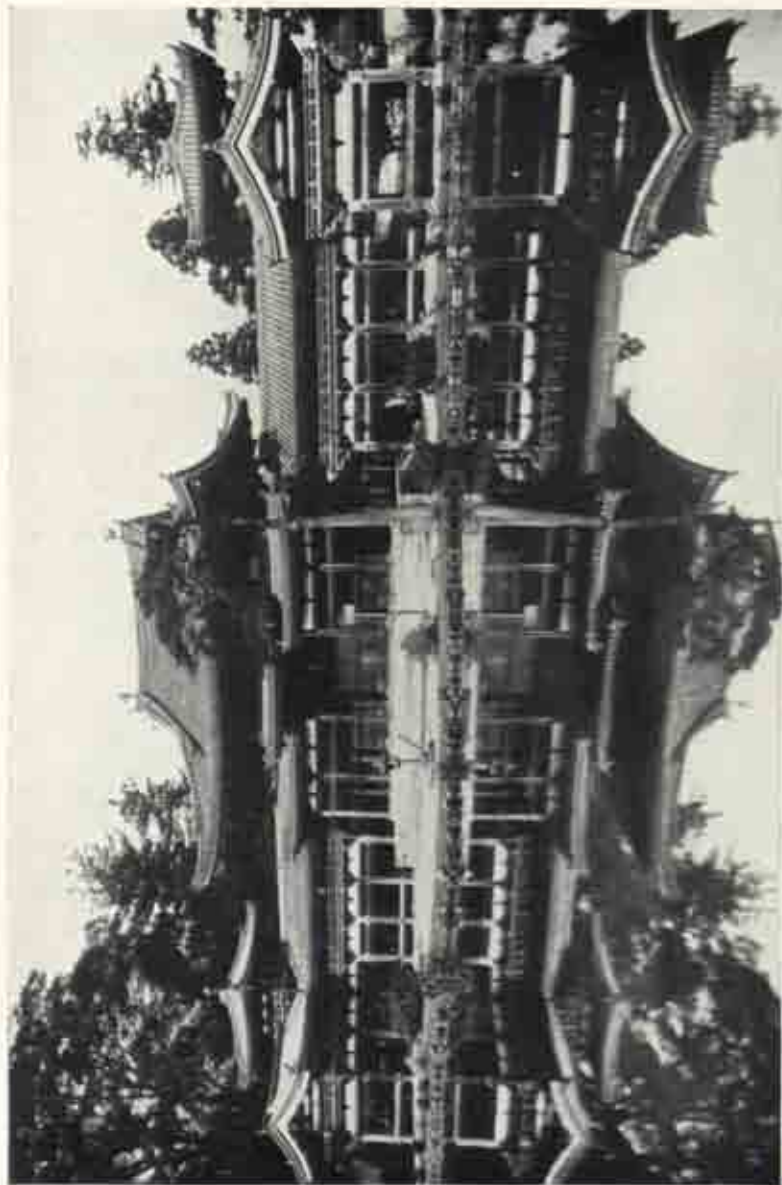
Photo, Asuka-en.

MANDALA OF THE TWO BUDDHIST WORLDS: DAINICHI  
*Kōtōdera Temple, Nara Prefecture*

THE UNIVERSITY PRINTS  
BOSTON

JŌGAN PERIOD  
794—897





PHOENIX HALL (HŌŌDŌ)  
*Byōdōin Temple, Uji, Kyoto Prefecture*

THE UNIVERSITY PRINTS  
BOSTON

DATED 1053  
FUJIWARA PERIOD





Photo, Anika-en

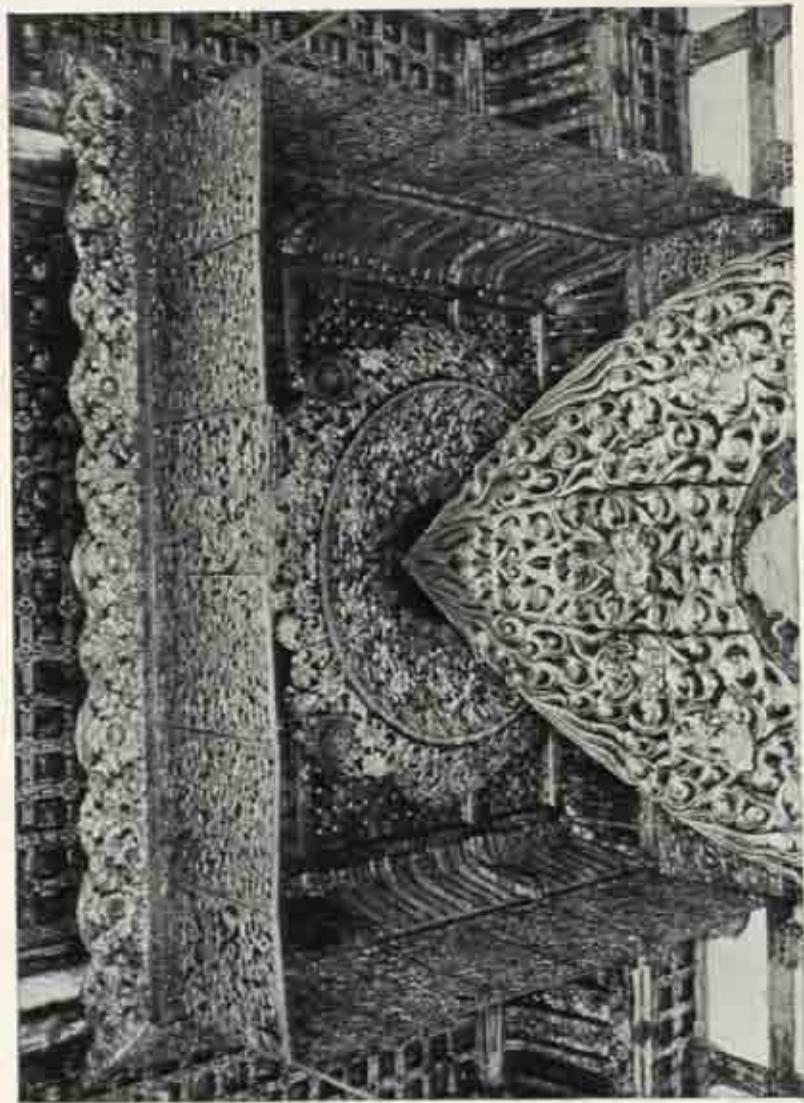
AMIDA OF HŌŌDŌ (Wood)  
*Hōōdōin Temple, Uji, Kyōto Prefecture*

THE UNIVERSITY PRINTS  
BOSTON

ATTRIBUTED TO JŌCHŌ (d. 1057)  
FUJIWARA PERIOD







CANOPY AND CEILING OF HŌŌDŌ (WOOD)  
*Byōdōin Temple, Uji, Kyoto Prefecture*

DATED 1053  
FUJIWARA PERIOD

THE UNIVERSITY PRINTS  
BOSTON





MEIKIRA, ONE OF THE TWELVE GENERALS  
(Wood, Half-relief)  
*Tōkondō, Kōfuhjō Temple, Nara*





DAITOKU MYŌŌ (WOOD)

*Museum of Fine Arts, Boston*





Photo. Asuka-en

ICHIJIKINRIN (Wood)  
*Chūsonji Temple, Iwate Prefecture*







Photo. Anaka-en

KICHIJŌTEN (Wood)  
*Jinryūji Temple, Kyōto Prefecture*





GIGAKU MASK:  
*Museum of Fine Arts, Boston*





AMIDA AND TWENTY-FIVE BODHISATTVAS  
(Central Panel and Detail of Bodhisattvas)  
*Dainin Hokujūkain, M. Kōga*





PAINTED DOORS OF HŌŌDŌ: PARADISE SCENE (Detail)  
*Byōdōin Temple, Uji, Kyoto Prefecture*

THE UNIVERSITY PRINTS  
BOSTON

DATED 1083  
FUJIWARA PERIOD





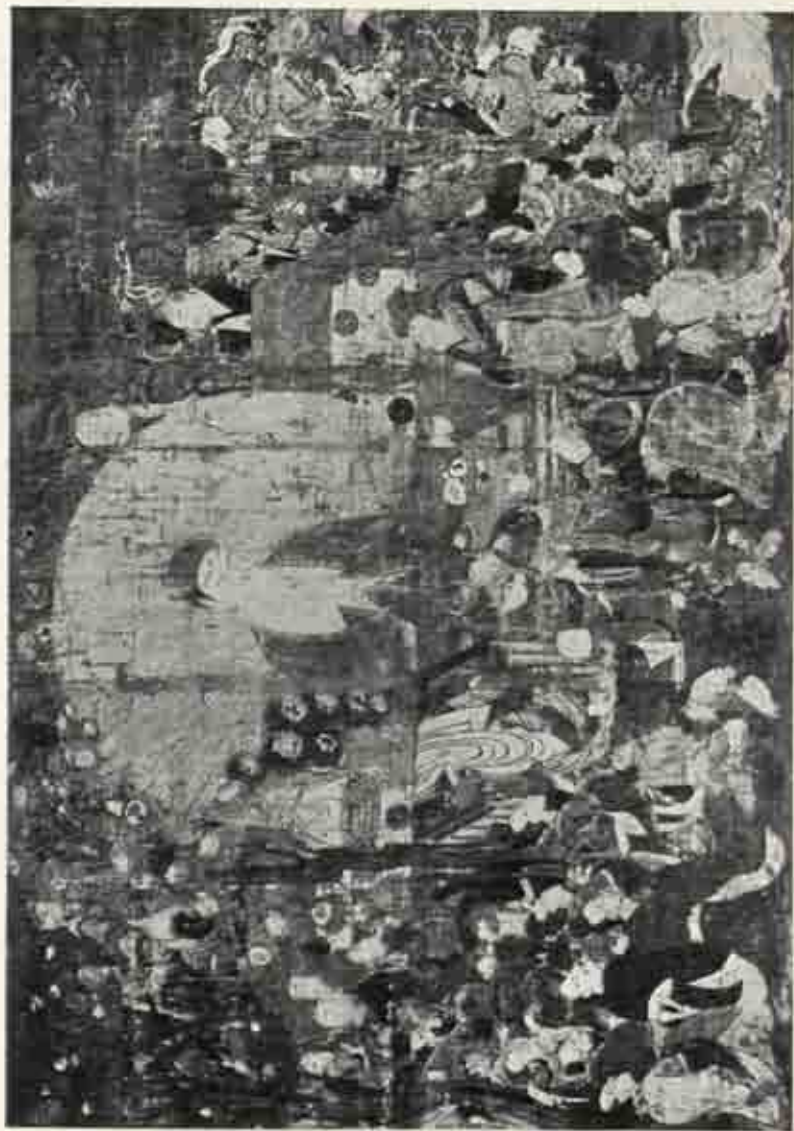


DATED 1086  
FUJIWARA PERIOD



NIRVANA  
*Kōyōji Temple, Mt. Kiyū*





SHAKA RISING FROM HIS COFFIN  
*Okunōji Temple, Kyoto Prefecture*

THE UNIVERSITY PRINTS  
BOSTON

FUJIWARA PERIOD  
897—1185





HÖROKAKU MANDALA  
*Freer Gallery of Art, Washington*





HORSE-HEADED KWANNON  
*Museum of Fine Arts, Boston*







MURYŌRIKIKU  
*Dalein NakaJōkokuin, Mt. Koya*





FUGEN

*Imperial Household Museum, Tokyo*

100

100

100

100

100



GENJI MONOGATARI. EASTERN HOUSE

*Murquls Tokugawa Collection, Tokyo*

ATTRIBUTED TO TAKAYOSHI. XII CENT.  
FUJIWARA PERIOD

THE UNIVERSITY PRINTS  
BOSTON





ANIMAL CARICATURES (Detail)

*Kan'ei Tensho, Kyoto*

ATTRIBUTED TO TOBA SŌJŌ, XII CENT.  
FUJIWARA PERIOD.

THE UNIVERSITY PRINTS  
BOSTON







SHIGISAN ENGI: THE FLYING GRANARY (Detail)

*(Shigisanengishi) Temple, Nani Prefecture*

XII CENT.  
FUJIWARA PERIOD

THE UNIVERSITY PRINTS  
BOSTON





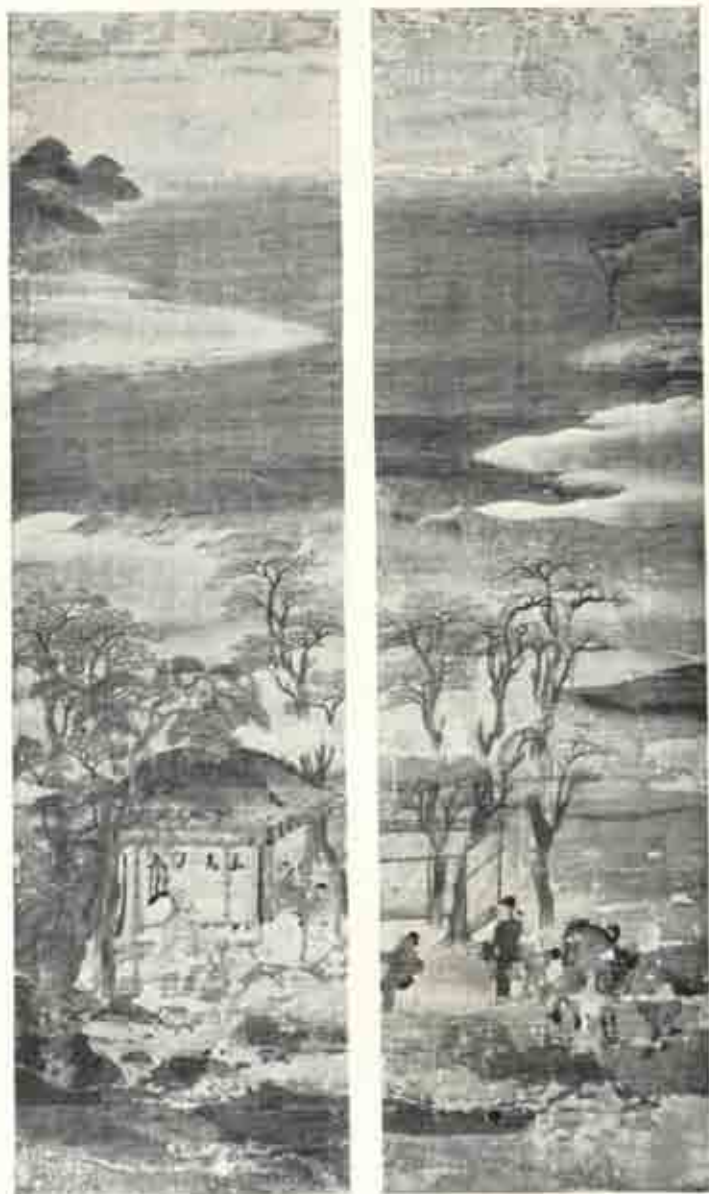
SŪTRA DEDICATED BY THE TAIRA FAMILY  
*Hakusaijima Shrine, Mizushima Prefecture*

C. 1184

FUJIWARA PERIOD

THE UNIVERSITY PRINTS  
 BOSTON





LANDSCAPE (Two Panels of a Screen)  
*Kyūgokuhiji Temple (Yaki), Kyoto*



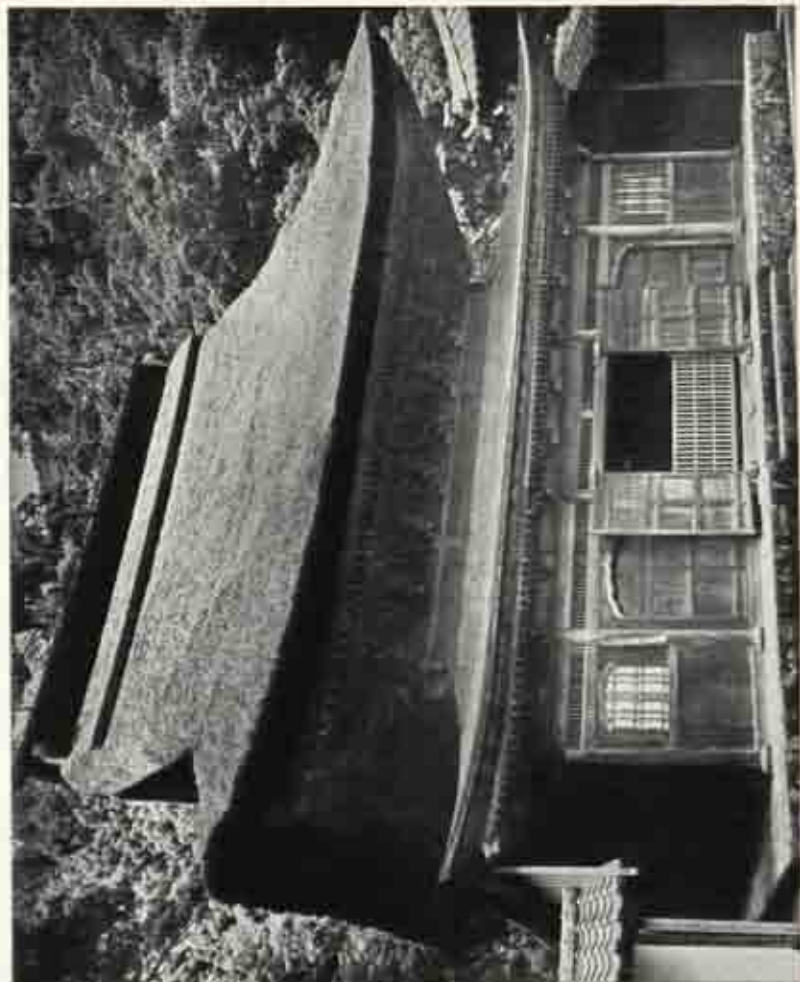


Photo. Anzaka-en

SHARIDEN

*Engakuji Temple, Kamakura*

LATE XIII CENT.  
KAMAKURA PERIOD

THE UNIVERSITY PRINTS  
BOSTON







Photo. Anika-en

DAINICHI (Wood)  
*Enjūji Temple, Nara Prefecture*





Photo. Amku-en

**HOSSŌ PATRIARCH MUCHAKU (Wood)**

*Hokusanō, Kōfukuji Temple, Nara*





MIROKU (Wood)  
*Museum of Fine Arts, Boston*

the 1990s, the number of people in the labour force has increased by 1.5 million, and the number of people in the labour force aged 65 and over has increased by 1.2 million. The number of people aged 65 and over in the labour force has increased from 1.2 million in 1990 to 2.4 million in 2000.

As a result of the increase in the number of people in the labour force aged 65 and over, the number of people in the labour force aged 65 and over has increased from 1.2 million in 1990 to 2.4 million in 2000. The number of people aged 65 and over in the labour force has increased from 1.2 million in 1990 to 2.4 million in 2000.

The number of people in the labour force aged 65 and over has increased from 1.2 million in 1990 to 2.4 million in 2000. The number of people aged 65 and over in the labour force has increased from 1.2 million in 1990 to 2.4 million in 2000.

The number of people in the labour force aged 65 and over has increased from 1.2 million in 1990 to 2.4 million in 2000. The number of people aged 65 and over in the labour force has increased from 1.2 million in 1990 to 2.4 million in 2000.

The number of people in the labour force aged 65 and over has increased from 1.2 million in 1990 to 2.4 million in 2000. The number of people aged 65 and over in the labour force has increased from 1.2 million in 1990 to 2.4 million in 2000.

The number of people in the labour force aged 65 and over has increased from 1.2 million in 1990 to 2.4 million in 2000. The number of people aged 65 and over in the labour force has increased from 1.2 million in 1990 to 2.4 million in 2000.

The number of people in the labour force aged 65 and over has increased from 1.2 million in 1990 to 2.4 million in 2000. The number of people aged 65 and over in the labour force has increased from 1.2 million in 1990 to 2.4 million in 2000.

The number of people in the labour force aged 65 and over has increased from 1.2 million in 1990 to 2.4 million in 2000. The number of people aged 65 and over in the labour force has increased from 1.2 million in 1990 to 2.4 million in 2000.

The number of people in the labour force aged 65 and over has increased from 1.2 million in 1990 to 2.4 million in 2000. The number of people aged 65 and over in the labour force has increased from 1.2 million in 1990 to 2.4 million in 2000.

The number of people in the labour force aged 65 and over has increased from 1.2 million in 1990 to 2.4 million in 2000. The number of people aged 65 and over in the labour force has increased from 1.2 million in 1990 to 2.4 million in 2000.



Photo. Atsuka-en

DEMON LANTERN-BEARER (Wood)  
*Kōfukuji Temple, Nara*



# THE HISTORY OF THE UNITED STATES

The history of the United States is a story of growth and change. From the first European settlers to the present day, the nation has evolved through various stages of development. The early years were marked by exploration and the establishment of colonies. The American Revolution led to the birth of a new nation, and the subsequent years saw the expansion of territory and the growth of industry. The Civil War was a pivotal moment in the nation's history, leading to the abolition of slavery and the strengthening of the federal government. The 20th century brought significant social and economic changes, including the rise of the industrial revolution and the emergence of the United States as a global superpower. Today, the United States continues to play a leading role in the world, facing new challenges and opportunities.



Photo, Anko-en

**BASU-SENNIN (Wood)**  
*Sanjūsanzendō Temple, Kyōto*

**THE UNIVERSITY PRINTS**  
**BOSTON**

**UNKEI STYLE, XIII CENT.**  
**KAMAKURA PERIOD**





Photo. Anaka-en

KONGÖRIKISHI (Wood)  
*Kōfukui Templo, Nara*

THE UNIVERSITY PRINTS  
BOSTON

ATTRIBUTED TO JŌKEI, XIII CENT.  
KAMAKURA PERIOD





THE GREAT BUDDHA (Bronze)  
*Kamakura*

THE UNIVERSITY PRINTS  
BOSTON

DATED 1252  
KAMAKURA PERIOD





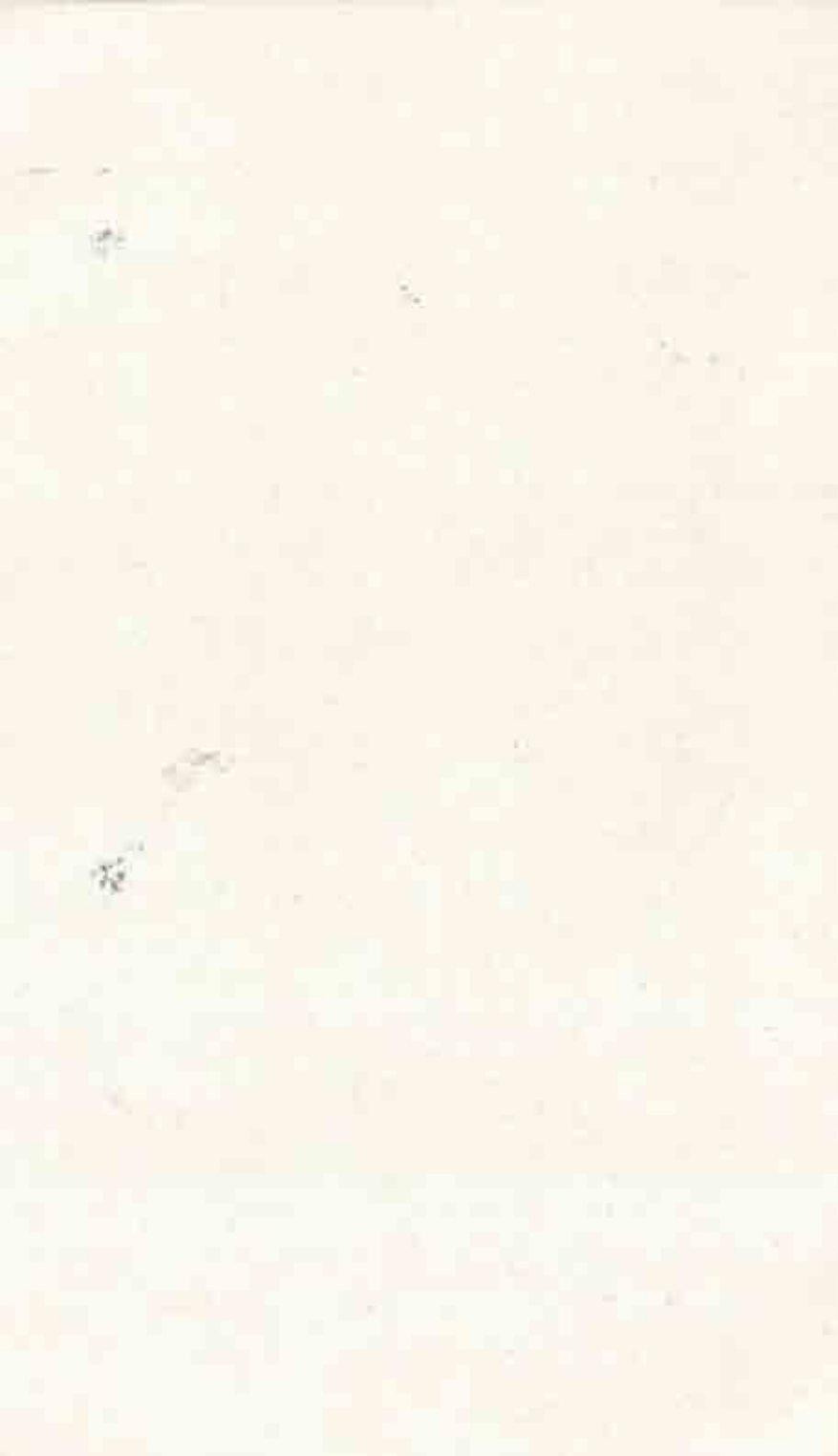
**BENZAITEN (Wood)**

*Tsurugaoka Hachiman-gū Shrine, Kamakura*

THE UNIVERSITY PRINTS  
BOSTON

DATED 1266  
KAMAKURA PERIOD







JIESUGI SHIGEFUSA (Wood)  
*Meigetsudo Temple, Kamakura*

THE UNIVERSITY PRINTS  
BOSTON

XIII CENT.  
KAMAKURA PERIOD





AIZEN (Wood)

THE UNIVERSITY PRINTS  
BOSTON



HACHIMAN AS PRIEST (Wood)

KÔSHUN, DATED 1324  
KAMAKURA PERIOD

*Museum of Fine Arts, Boston*

XIV CENT.  
KAMAKURA PERIOD





DESCENT OF AMIDA  
*Ueno Seichi Collection, Osaka*





DESCENT OF AMIDA  
*Chion-in Temple, Kyoto*

THE UNIVERSITY PRINTS  
BOSTON

XIII CENT.  
KAMAKURA PERIOD







HASHIRI FUDŌ

*Marquis Inoue Collection, Tokyo*





JIZŌ

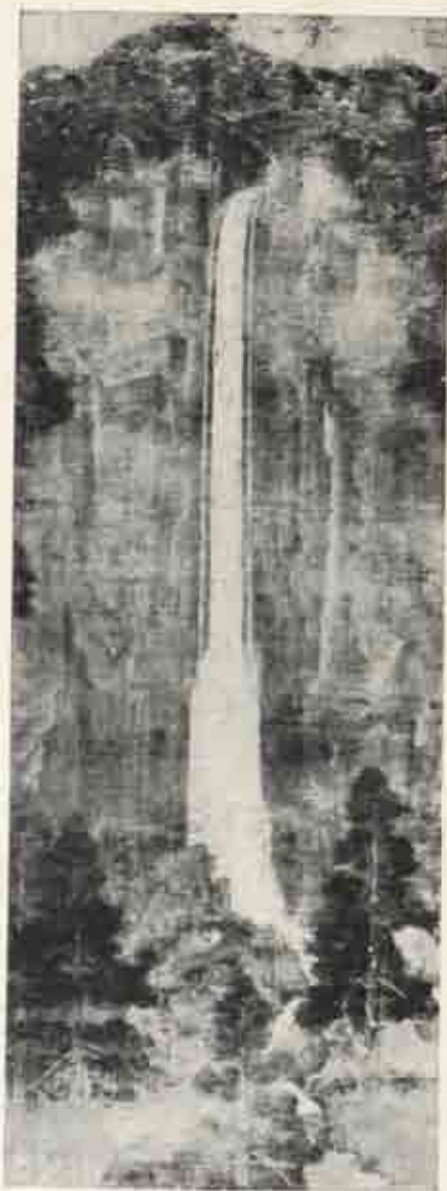
*Metropolitan Museum, New York*





KŌBŌ DAISHI AS A CHILD  
*Murayama Gōkoku Collection, Miyaagi*





NACHI WATERFALL  
*Nezu-Katakirō Collection, Tôkyô*







A RAKAN  
*Museum of Fine Arts, Boston*



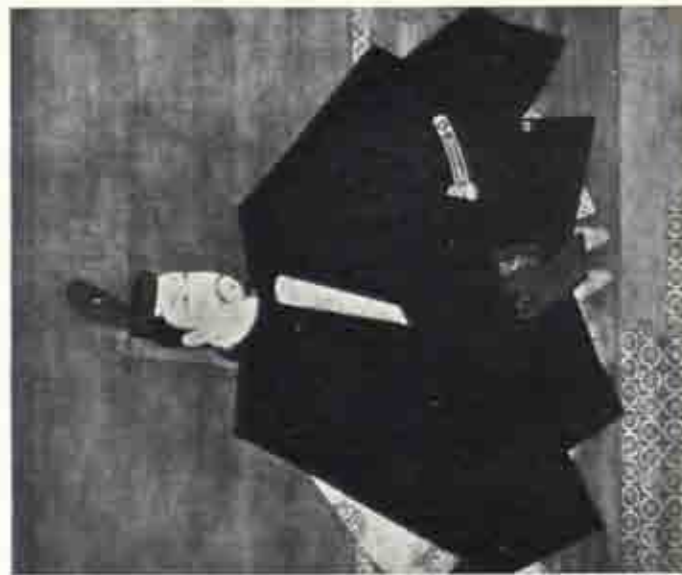


Photo. Ashikaga  
MINAMOTO NO YORITOMO

THE UNIVERSITY PRINTS  
BOSTON



MONGAKU (Detail)

*Mingof Tenmei, Kyoto*

ATTRIBUTED TO TAKANOBU, 1181-1204  
KAMAKURA PERIOD

1875

1876

1877

1878



KIBI'S ADVENTURES IN CHINA (Detail)  
*Museum of Fine Arts, Boston*

XII CENT.  
KAMAKURA PERIOD

THE UNIVERSITY PRINTS  
BOSTON





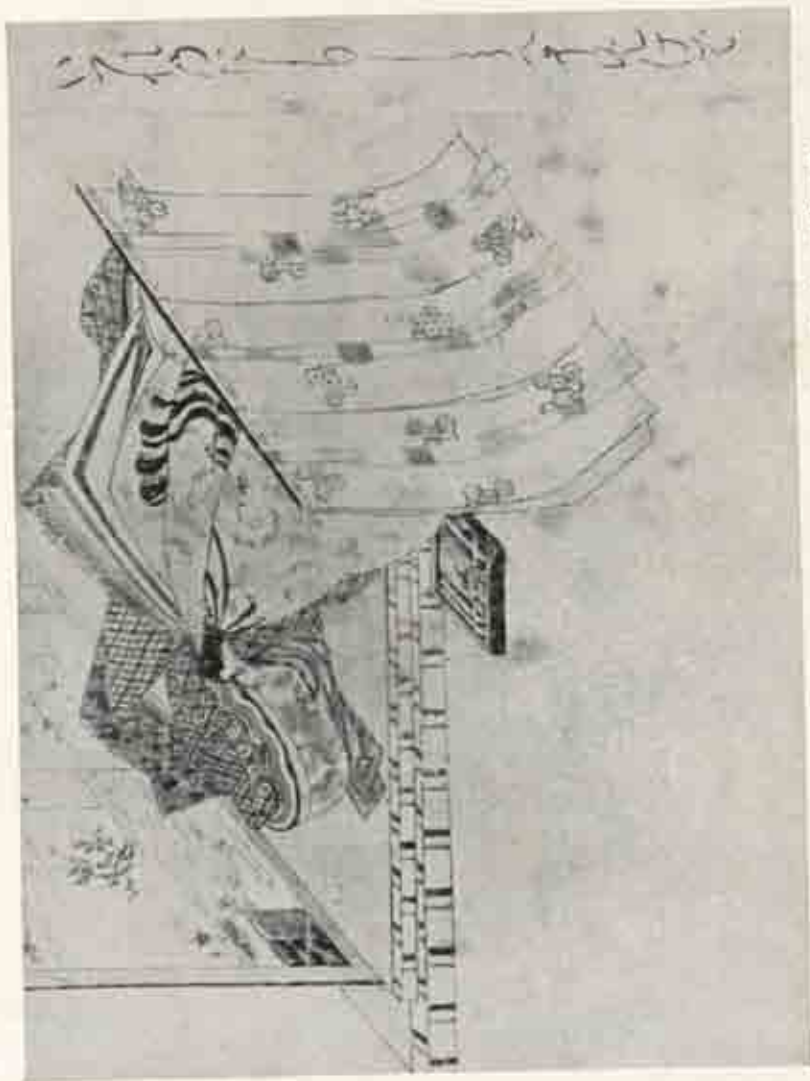
GAKIZŌSHI: WATER OFFERING  
*Sogenji Temple, Ohigama*

EARLY XIII CENT.  
KAMAKURA PERIOD

THE UNIVERSITY PRINTS  
BOSTON







THE THIRTY-SIX POETS: ITSUKI NO MIYA NO NYOGO (Sections of Scrolls)  
*Formerly Marquis Sibiraf Collection*

ATTRIBUTED TO NOBUZANE, 1177-1265  
KAMAKURA PERIOD

THE UNIVERSITY PRINTS  
BOSTON





SAIGYŌ MONOGATARI (Detail)  
*From Miyauchi Collection, Aoyama-ji*

ATTRIBUTED TO FUJIWARA NO TSUNETAKA  
EARLY XIII CENT. KAMAKURA PERIOD

THE UNIVERSITY PRINTS  
BOSTON





HEIJI MONOGATARI: THE BURNING OF THE SANJŌ PALACE (Detail)

*Museum of Fine Arts, Boston*

MIDDLE, XIII CENT.  
KAMAKURA PERIOD.

THE UNIVERSITY PRINTS  
BOSTON





IMPERIAL MOUNTED GUARDS (Detail of Scroll)  
*Baron Ōgura Collection, Tokyo*







LIFE OF HŌNEN SHŌNIN (Daitai)  
*Chōjūjin Temple, Kyōto*

THE UNIVERSITY PRINTS  
BOSTON

C. 1300  
KAMAKURA PERIOD



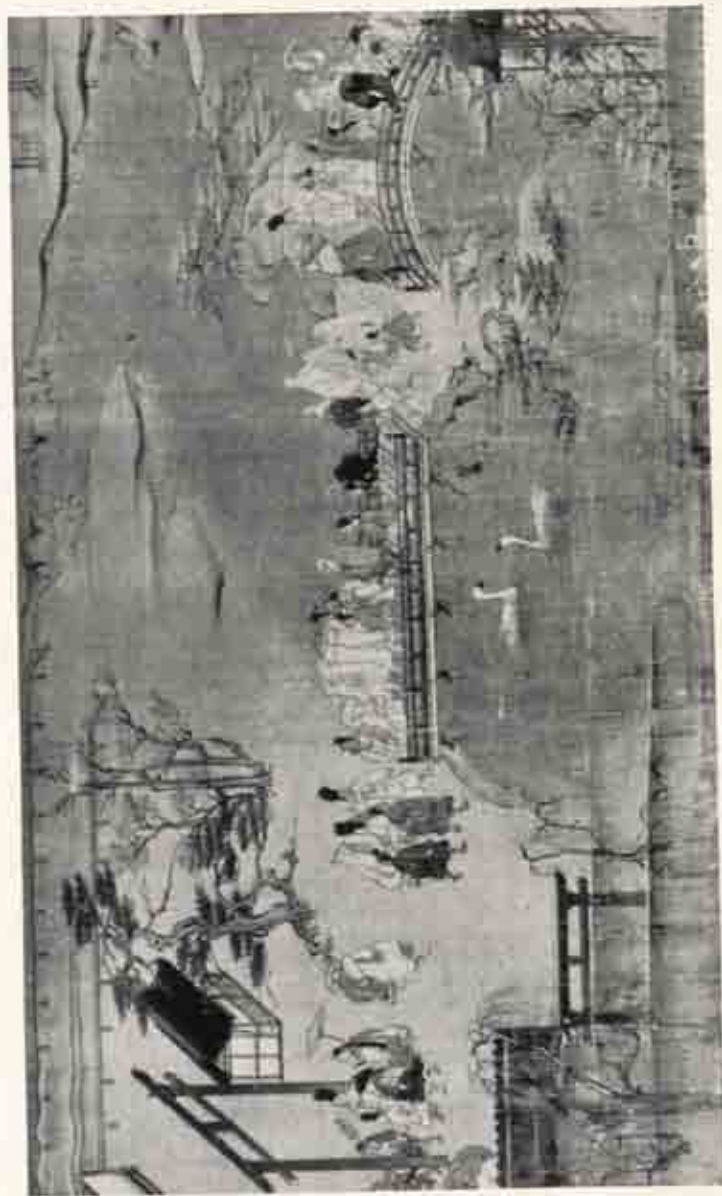


FAST OXEN (Section of Scroll)  
*Imperial Household Museum, Tokyo*

KAMAKURA PERIOD  
1185—1392

THE UNIVERSITY PRINTS  
BOSTON





LIFE OF IPPEN SHŌNIN (Detail)  
*Kōkokuji Temple, Kyōto*

ENI, DATED 1299  
KAMAKURA PERIOD

THE UNIVERSITY PRINTS  
BOSTON





THE FOUR SLEEPERS  
*Marquis Maeda Collection, Tokyo*







LACQUER BOX  
*Museum of Fine Arts, Boston*

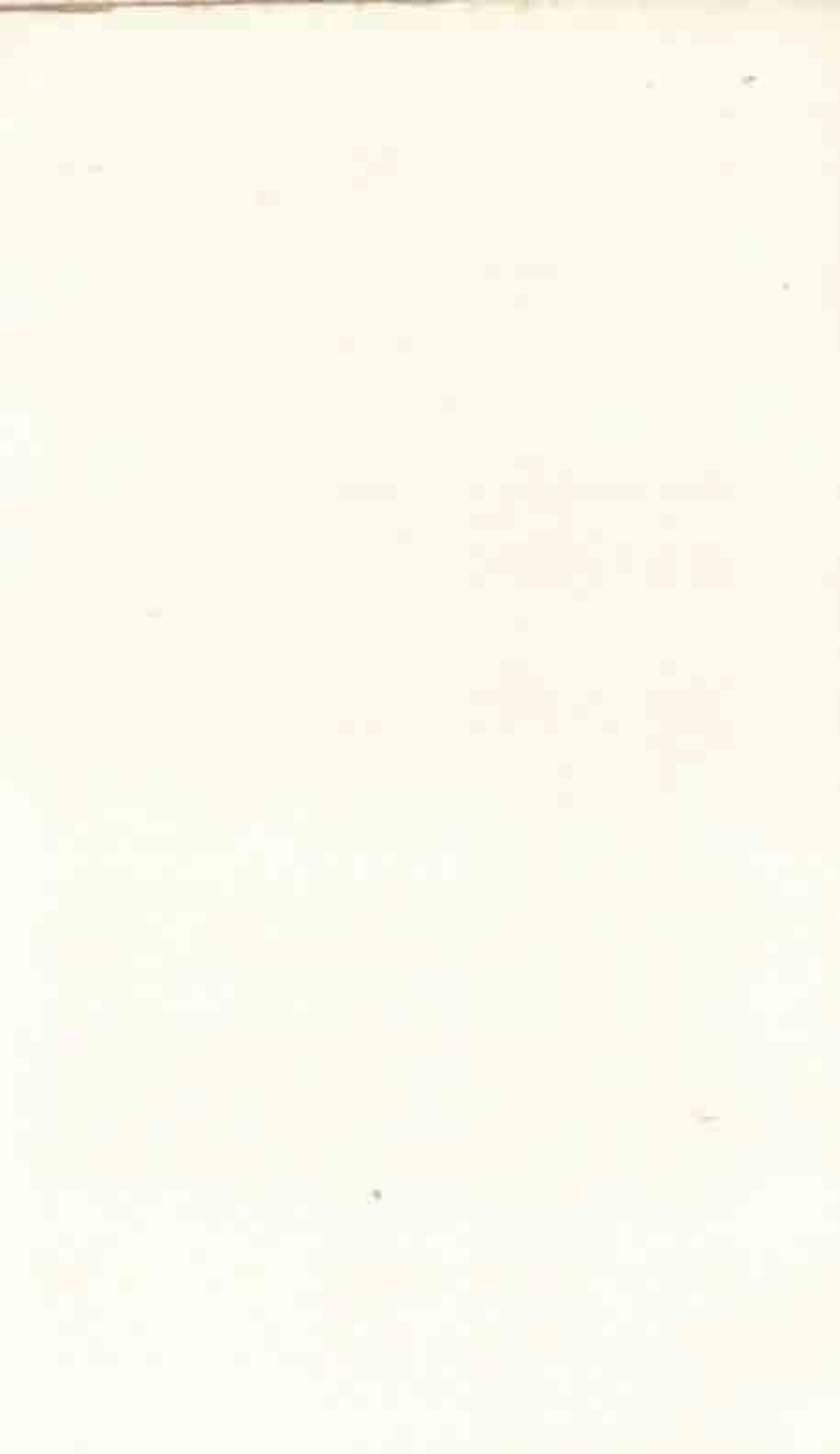


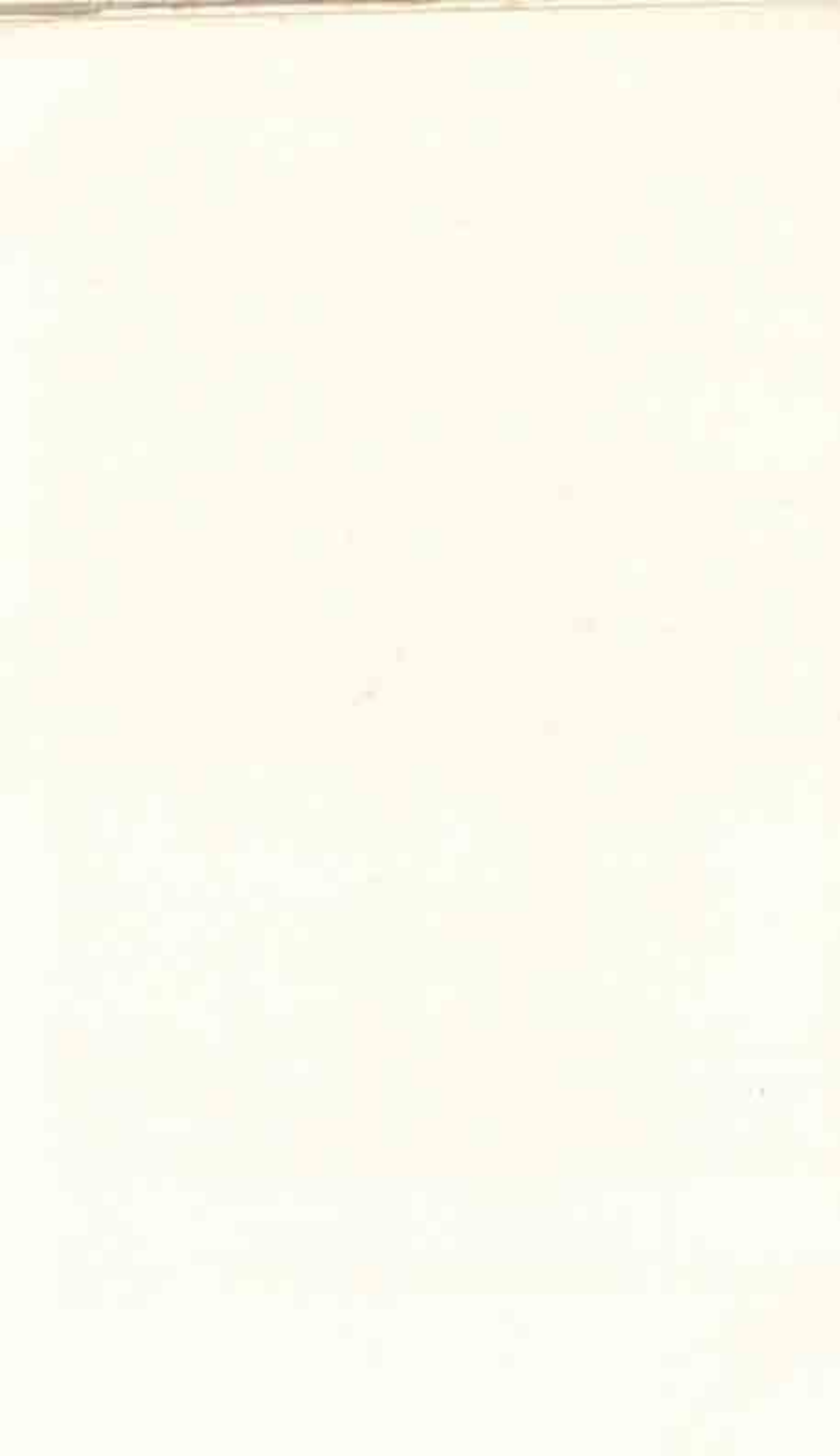


Photo: Akira-eb

GOLDEN PAVILION  
*Kinkaku-ji Temple, Kyoto*

DATED 1397  
AEHIKAGA PERIOD

THE UNIVERSITY PRINTS  
BOSTON





THE MASTER SHŌICHI  
*Tōfukujī Temple, Kyoto*





LANDSCAPE

*Konchōin Temple, Kyōto*

THE UNIVERSITY PRINTS  
BOSTON

ATTRIBUTED TO CHŌ DENSU (MINCHŌ)  
1352—1431. ASHIKAGA PERIOD







CATFISH AND GOURD  
*Tuzurin Tenaghi, Kyōto*

JOSETSU, C. 1394—1404  
ASHIKAGA PERIOD

THE UNIVERSITY PRINTS  
BOSTON



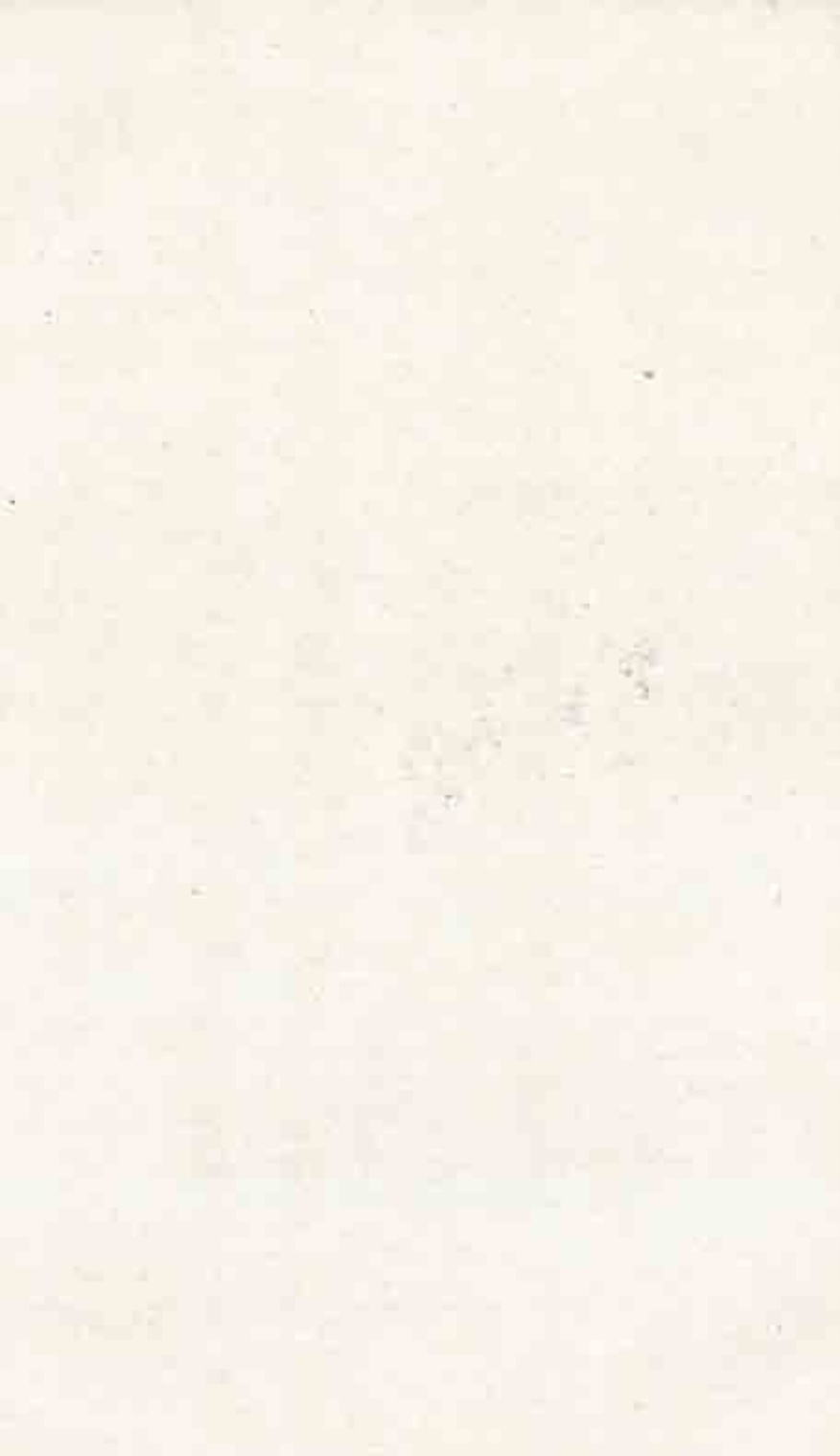


LANDSCAPE

*Museum of Fine Arts, Boston*SHŪBUN. MIDDLE. XV CENT.  
ASHIKAGA PERIOD

HABOKU LANDSCAPE

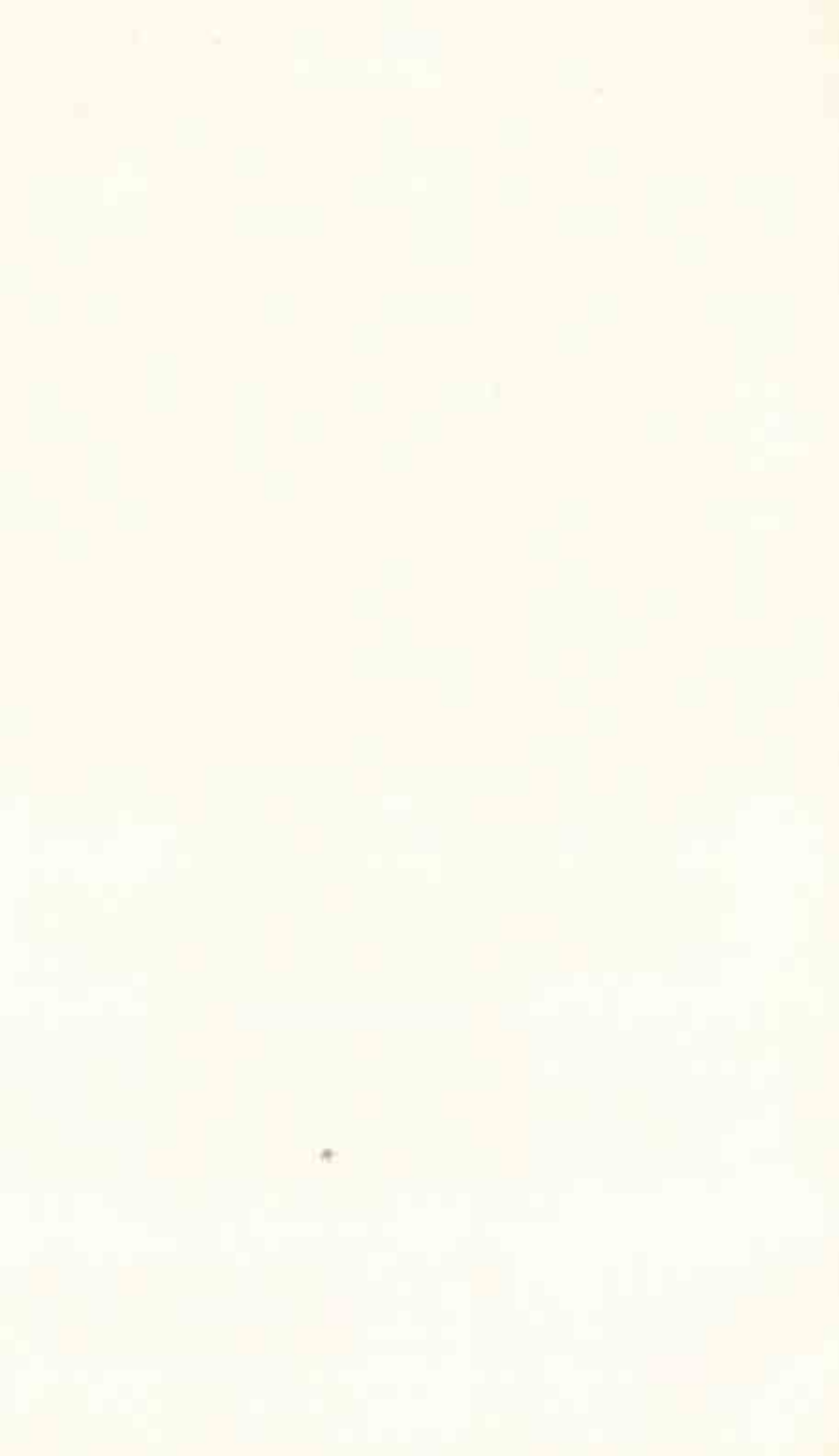
*Imperial Household Museum, Tokyo*SESSHŪ. DATED 1495  
ASHIKAGA PERIOD





WINTER LANDSCAPE

*Imperial Household Museum, Tokyo*





CRANES UNDER A PINE TREE  
*Onishi Shintaro Collection, Tokyo*

THE UNIVERSITY PRINTS  
BOSTON

SESSHU: 1420—1500  
ASHIKAGA PERIOD







MONKEYS

*Museum of Fine Arts, Boston*

THE UNIVERSITY PRINTS  
BOSTON

SESSHU, 1420—1500  
ASHIKAGA PERIOD





SAGE RIDING A DONKEY

*Museum of Fine Arts, Boston*





SUMMER LANDSCAPE  
*Count Tokuyama Collection, Tokyo*





LANDSCAPE

*Nezu Kachirō Collection, Tōkyō*

THE UNIVERSITY PRINTS  
BOSTON

KEI SHOKI (SHŌKEI). XV CENT.  
ASHIKAGA PERIOD



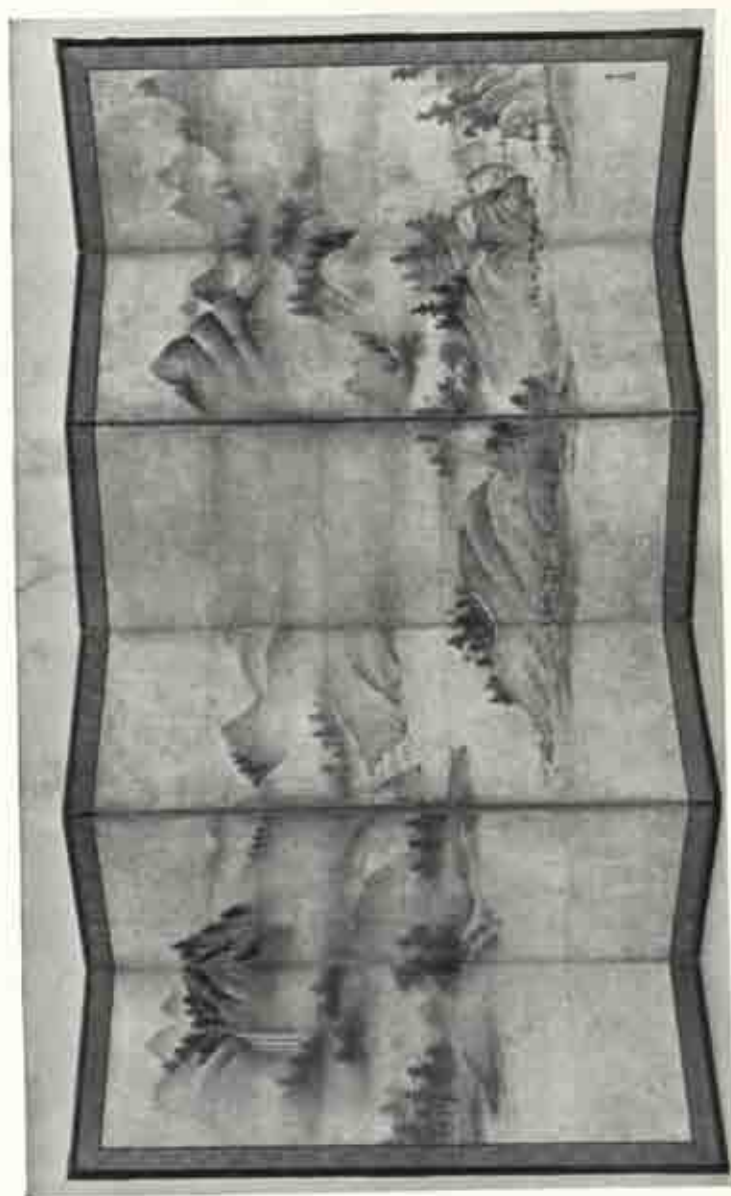




JITTOKU LAUGHING AT THE MOON

*Museum of Fine Arts, Boston*





CHINESE LANDSCAPE

*Mrs. John D. Rockefeller, Jr. Collection, New York*

SŌAMI, C. 1500.  
ASHIKAGA PERIOD

THE UNIVERSITY PRINTS  
BOSTON





TETHERED HORSES AND FIGURES (Detail of Screen)

*Museum of Art, Cleveland*

TOSA SCHOOL, LATE XV CENT.  
ASHIKAGA PERIOD

THE UNIVERSITY PRINTS  
BOSTON





KEIKABOKU AND FUKUROKUJU  
*Museum of Fine Arts, Boston*







CRANE (Sliding Screen Panel)  
*Reinjin Temple, Kyōto*





RAPIDS

*From Sessho Collection, Fushinuma*

THE UNIVERSITY PRINTS  
BOSTON

KANO MOTONOBU, 1476—1559  
ASHIKAGA PERIOD





BOAT RETURNING IN A STORM

*Komuro, Tokuhideki Collection, Ōtoko*

SESSION, XVI CENT.  
ASHIKAGA PERIOD

THE UNIVERSITY PRINTS  
BOSTON





PICNIC UNDER MAPLES (Detail of Screen)  
*Viscount Fukuoka Collection, Tokyo*

THE UNIVERSITY PRINTS  
 BOSTON

KANO HIDEYORI. XVI CENT.  
 ASHIKAGA PERIOD







HIYUNKAKU

*Atsuta Honganji Temple, Kyoto*

MOMOYAMA PERIOD

1568—1615

THE UNIVERSITY PRINTS

BOSTON





TREES AND BIRDS (Detail of Screen)  
*Shōkoku Tōmei, Kyoto*

KANO EITOKU, 1543-1590  
MOMOYAMA PERIOD



THE UNIVERSITY PRINTS  
BOSTON



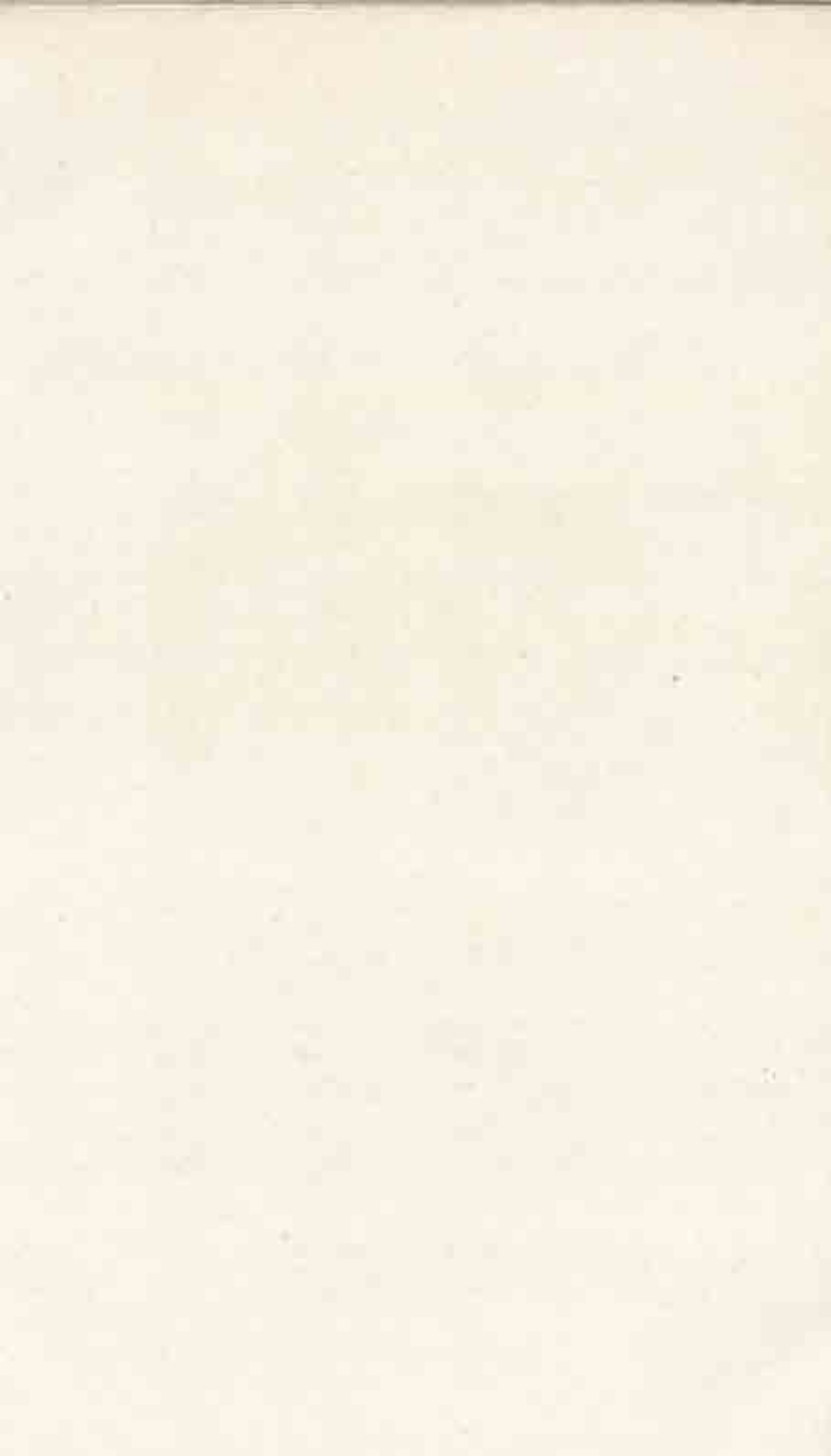


WHITE EAGLE ON A PINE TREE

*Imperial School of Art, Tokyo*

THE UNIVERSITY PRINTS  
BOSTON

KANO EITOKU, 1543-1590  
MOMOYAMA PERIOD





PEONIES (Sliding Screen Panels)

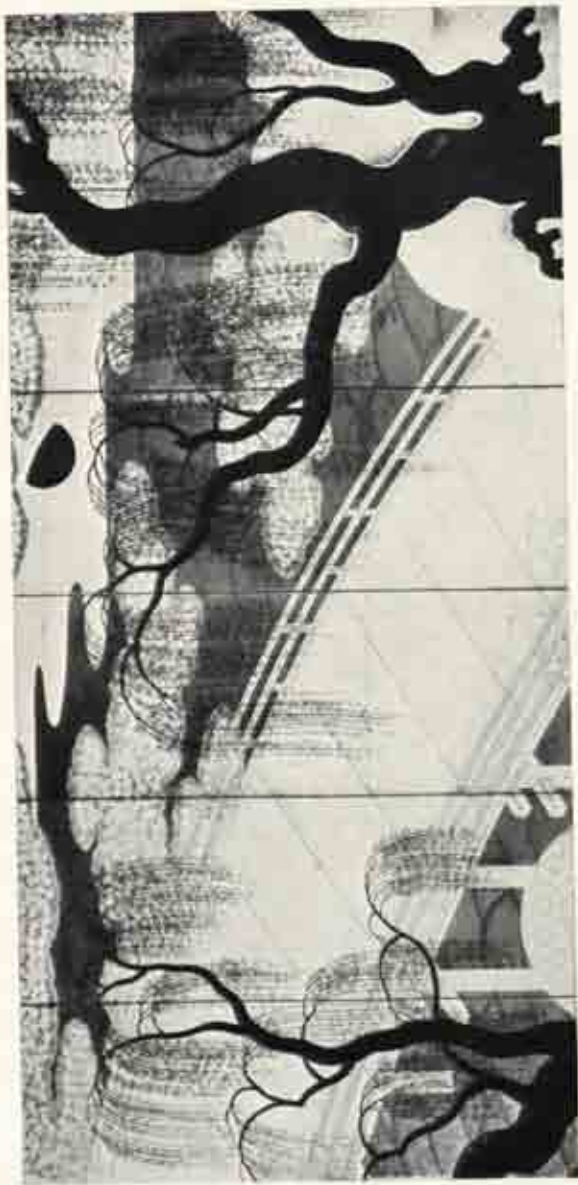
*Daihakufu Tsumaki, Kyoto*

THE UNIVERSITY PRINTS  
BOSTON

KANO SANRAKU. 1558—1635.  
MOMOYAMA PERIOD







UJI BRIDGE

*Mizoguchi Museum Collection, Tokyo*

ATTRIBUTED TO SANRAKU, 1559—1635  
MOMOYAMA PERIOD

THE UNIVERSITY PRINTS  
BOSTON

1890



TIGER

*Museum of Fine Arts, Boston*

THE UNIVERSITY PRINTS  
BOSTON

HASEGAWA TŌHAKU, 1539—1610  
MOMOYAMA PERIOD





PINE TREES

*Vicount Fukushima Collection, Tokyo*

HASEGAWA, TOHAKU, 1538—1610  
MOMOYAMA PERIOD

THE UNIVERSITY PRINTS  
BOSTON





CHINESE LANDSCAPE  
*Museum of Fine Arts, Boston*

UNKOKU TOGAN, 1547-1618  
MOMOYAMA PERIOD

THE UNIVERSITY PRINTS  
BOSTON



1. 24



CRANE

*Museum of Fine Arts, Boston*





Photo, Anika-en

SANBŌIN GARDEN  
*Daigoji Temple, Kyoto Prefecture*

THE UNIVERSITY PRINTS  
BOSTON

TOKUGAWA PERIOD  
1615—1867



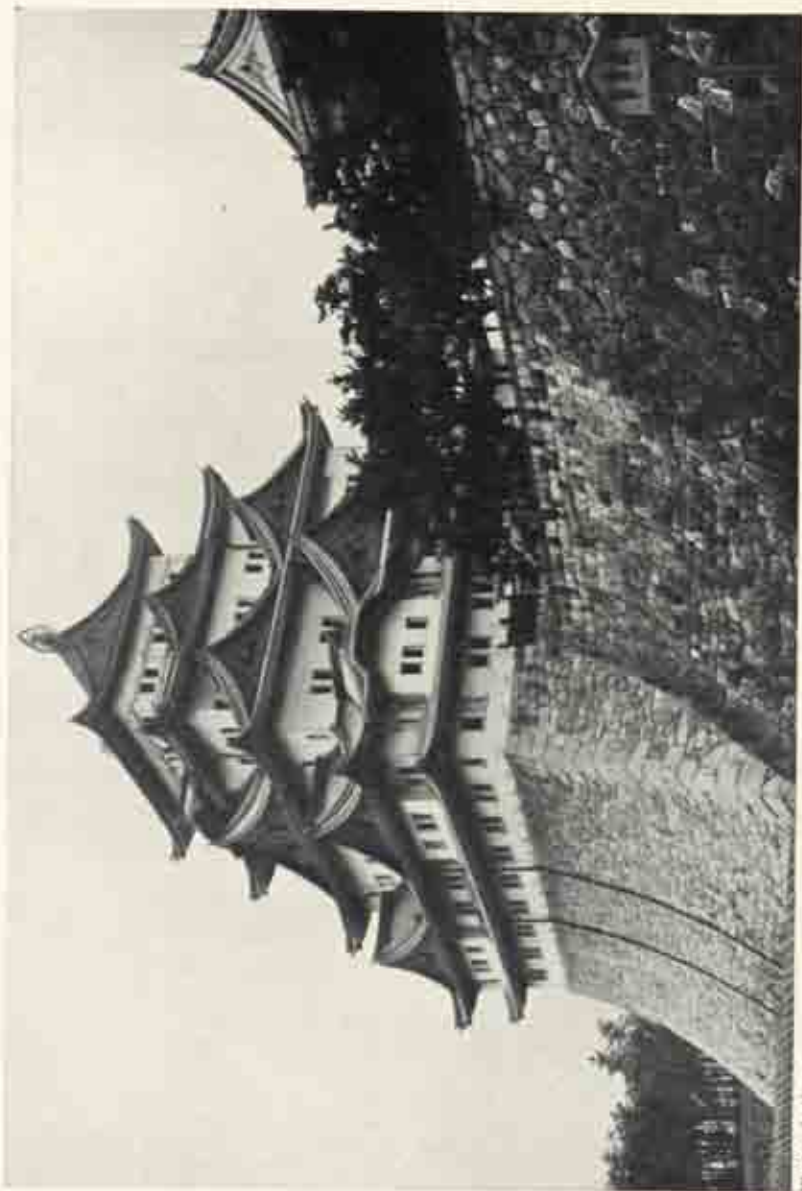


Photo: Asaka-en

CASTLE  
*Himeji*

THE UNIVERSITY PRINTS  
BOSTON

DATED 1611  
TOKUGAWA PERIOD



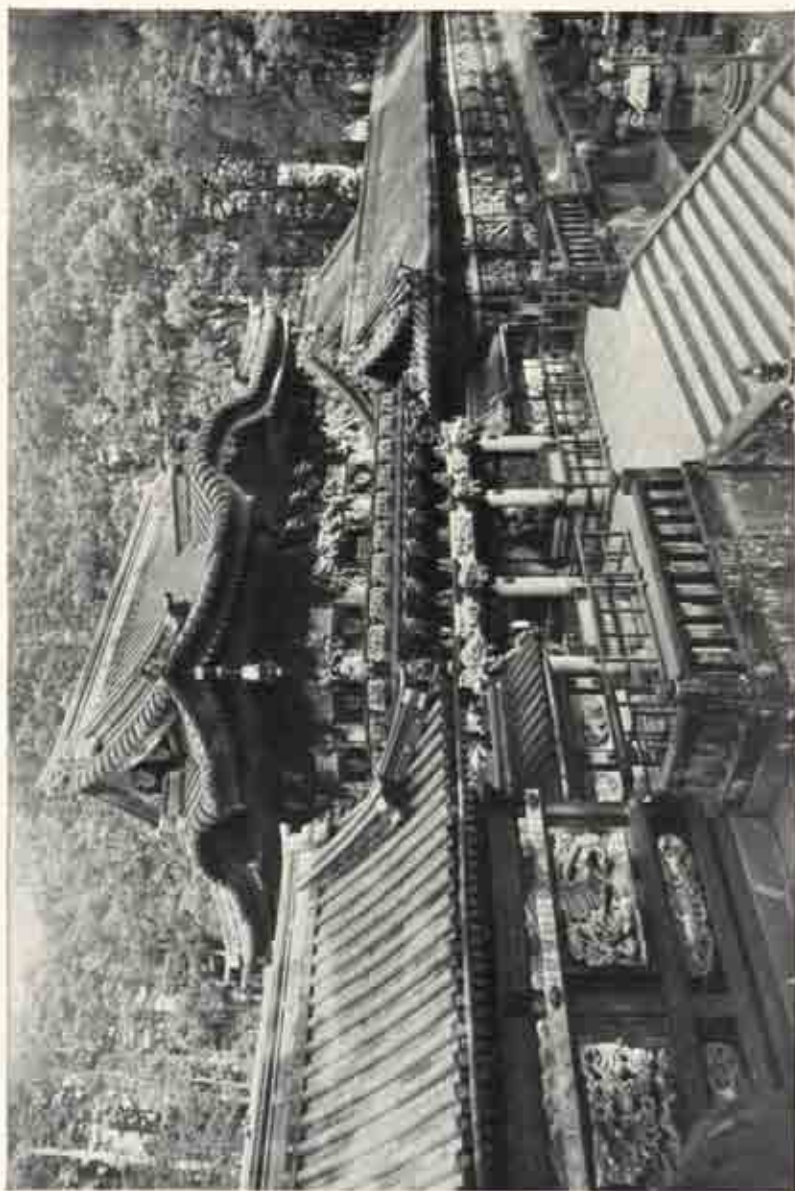


Photo: Japan Tourist Bureau

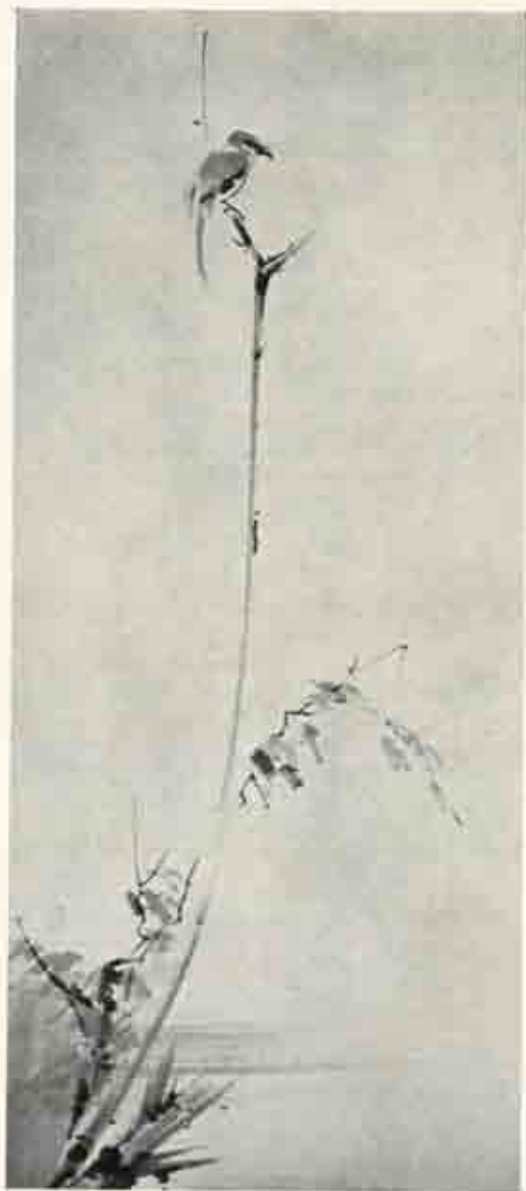
YŌMEIMON GATE, TŌSHŌGŪ SHRINE  
*Nikkō, Tochigi Prefecture*

THE UNIVERSITY PRINTS  
BOSTON

XVII CENT.  
TOKUGAWA PERIOD

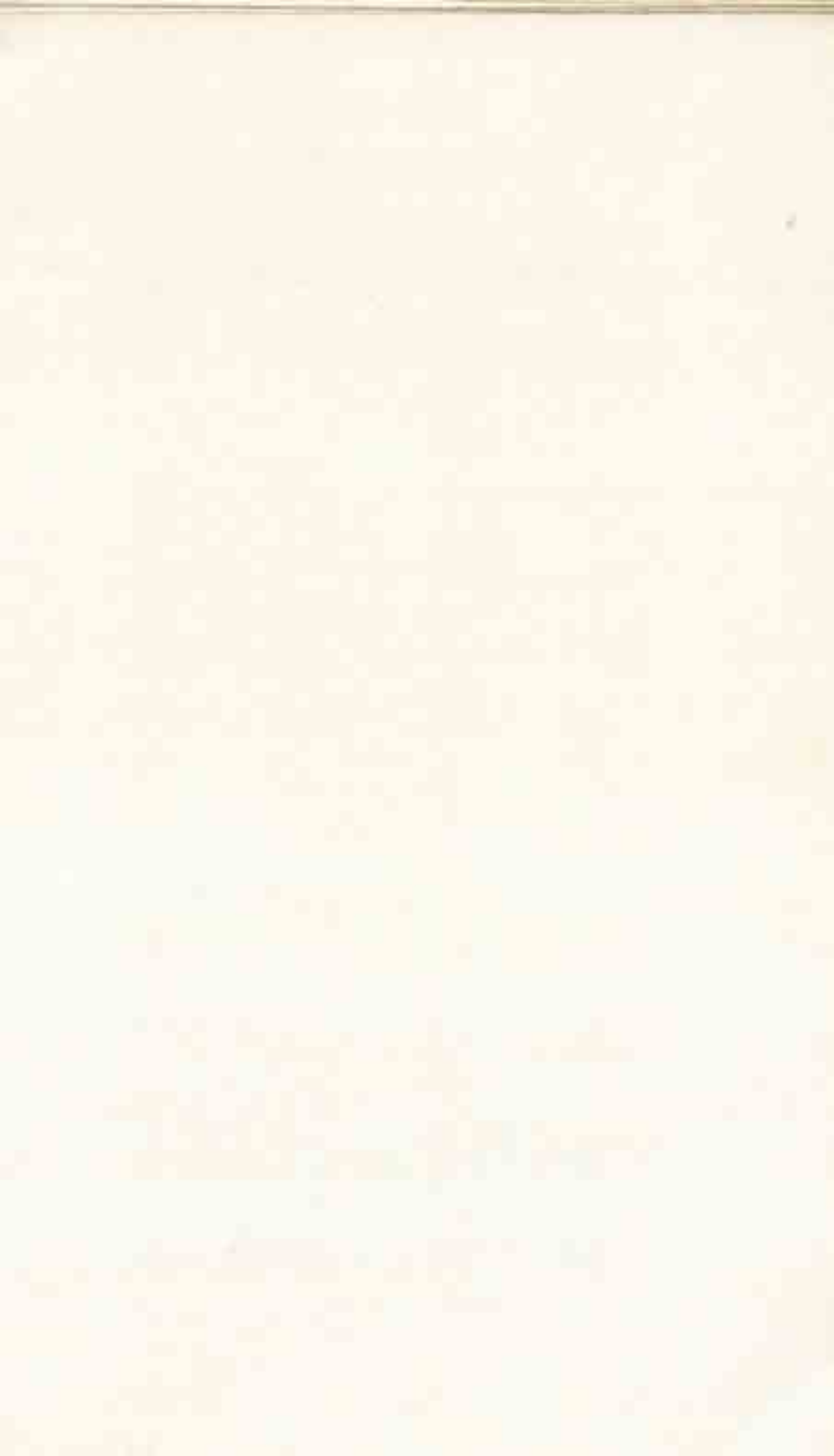






SHRIKE ON A WITHERED TREE

*Nagao Kingu Collection, Tokyo*





DEER SCROLL (DEERII)  
*Musō Kōmei Collection, Nippon*

CALLIGRAPHY BY HONNAMI KÔETSU, 1668—1637  
PAINTING BY NONOMURA SÔTATSU  
FIRST HALF, XVII CENT.

THE UNIVERSITY PRINTS  
BOSTON





LOTUS AND WATERBIRDS  
*Sakai Masagoe's Collection, Tôkyô*





WIND GOD

*Kenninji Tensho, Kyoto*

NONOMURA SŌTATSU, FIRST HALF, XVII CENT.  
TOKUGAWA PERIOD

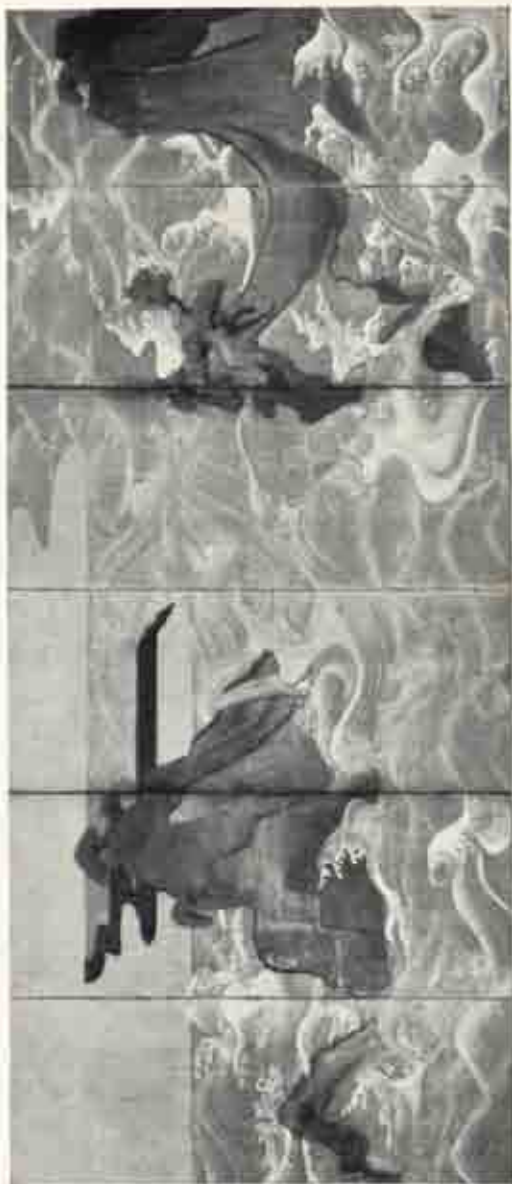


THUNDER GOD

THE UNIVERSITY PRINTS  
BOSTON







WAVES AT MATSUSHIMA.  
*Free Gallery of Art, Washington*

THE UNIVERSITY PRINTS  
BOSTON

NONOMURA SŌYATSU, FIRST HALF, XVII CENT.  
TOKUGAWA PERIOD





LADY VIEWING CHRYSANTHEMUMS  
*Hosaka Junji Collection, Tokyo*





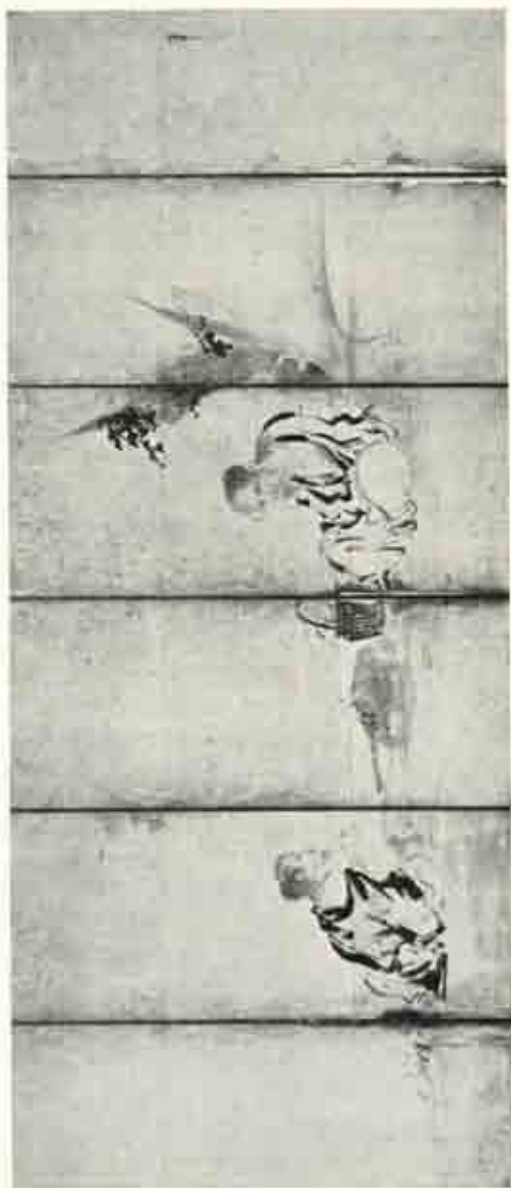
THE APRICOT ALTAR, CONFUCIUS AND TWO DISCIPLES

*Museum of Fine Arts, Boston*

THE UNIVERSITY PRINTS  
BOSTON

KANO TANYŪ, 1602—1674  
TOKUGAWA PERIOD





PO I AND SHU CH'I  
*Museum of Fine Arts, Boston*

KANO NAONOBU, 1607—1650  
TOKUGAWA PERIOD

THE UNIVERSITY PRINTS  
BOSTON







CLOTH-DRYING DANCE

*Tōyama Mokokuza Collection, Tokyo*

HANABUSA ITCHŌ, 1852—1724  
TOKUGAWA PERIOD

THE UNIVERSITY PRINTS  
BOSTON





GENJI MONOGATARI ALBUM: BARRIER HOUSE  
*Freer Gallery of Art, Washington*

THE UNIVERSITY PRINTS  
BOSTON

TOSA MITSUNORI: 1583-1638  
TOKUGAWA PERIOD





OGATA KORIN, 1658—1716  
TOKUGAWA PERIOD



RED AND WHITE PLUM TREES  
*Count Tsunoda's Collection, Tokyo*

THE UNIVERSITY PRINTS  
BOSTON





LACQUER INK-STONE BOX

*Imperial Household Museum, Tokyo*

OGATA KÖRIN, 1658—1718

TOKUGAWA PERIOD

THE UNIVERSITY PRINTS  
BOSTON

DISH

*Museum of Fine Arts, Boston*

DESIGNED BY OGATA KÖRIN

MADE BY OGATA KENZAN, 1663—1743







## FLOWER BASKETS

Hara Tomitarō Collection, Yokohama





THE FOUR SAGES OF MT. SHANG

*Museum of Fine Arts, Boston*

THE UNIVERSITY PRINTS  
BOSTON

SOGA SHONAKU, 1730—1783  
TOKUGAWA PERIOD





HOZU RIVER

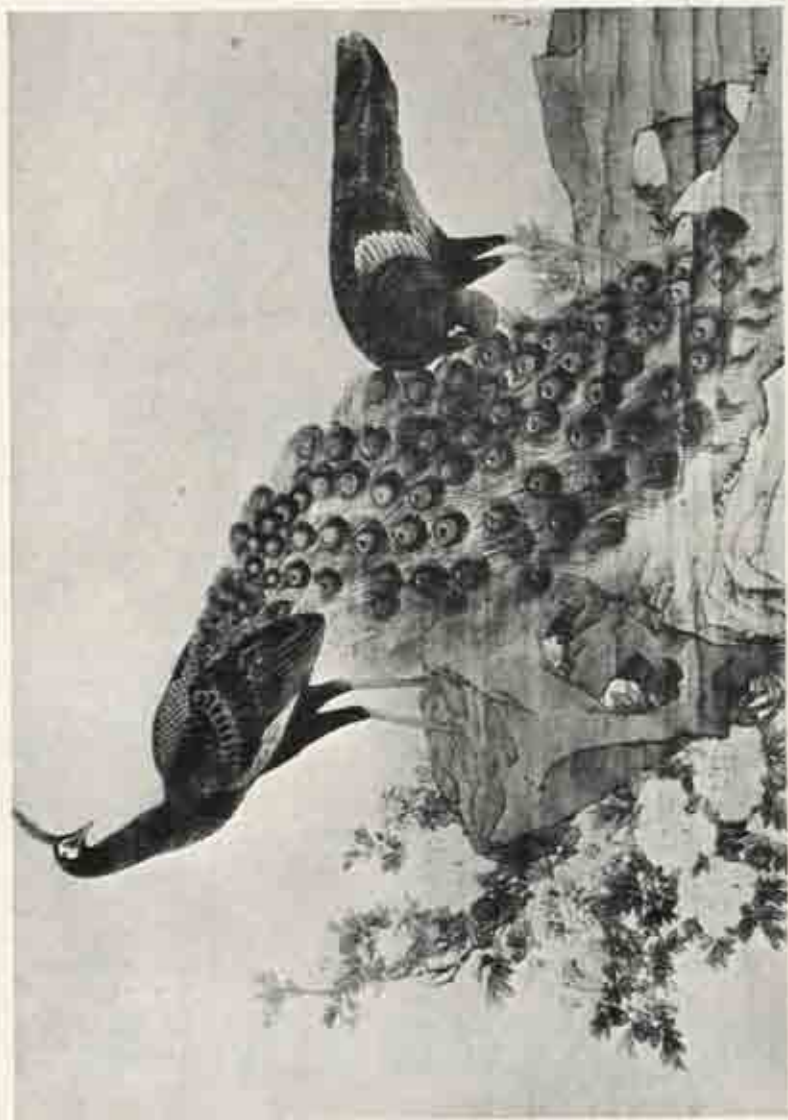
*Nishimura Sasamori Collection, Kyoto*

MARUYAMA ŌKYO, 1733—1795

TOKUGAWA PERIOD

THE UNIVERSITY PRINTS  
BOSTON





PEACOCKS AND PEONIES  
*Emusariki, Onaji Temple, Ota*

MARUYAMA OKYO, DATED 1771  
TOKUGAWA PERIOD

THE UNIVERSITY PRINTS  
BOSTON



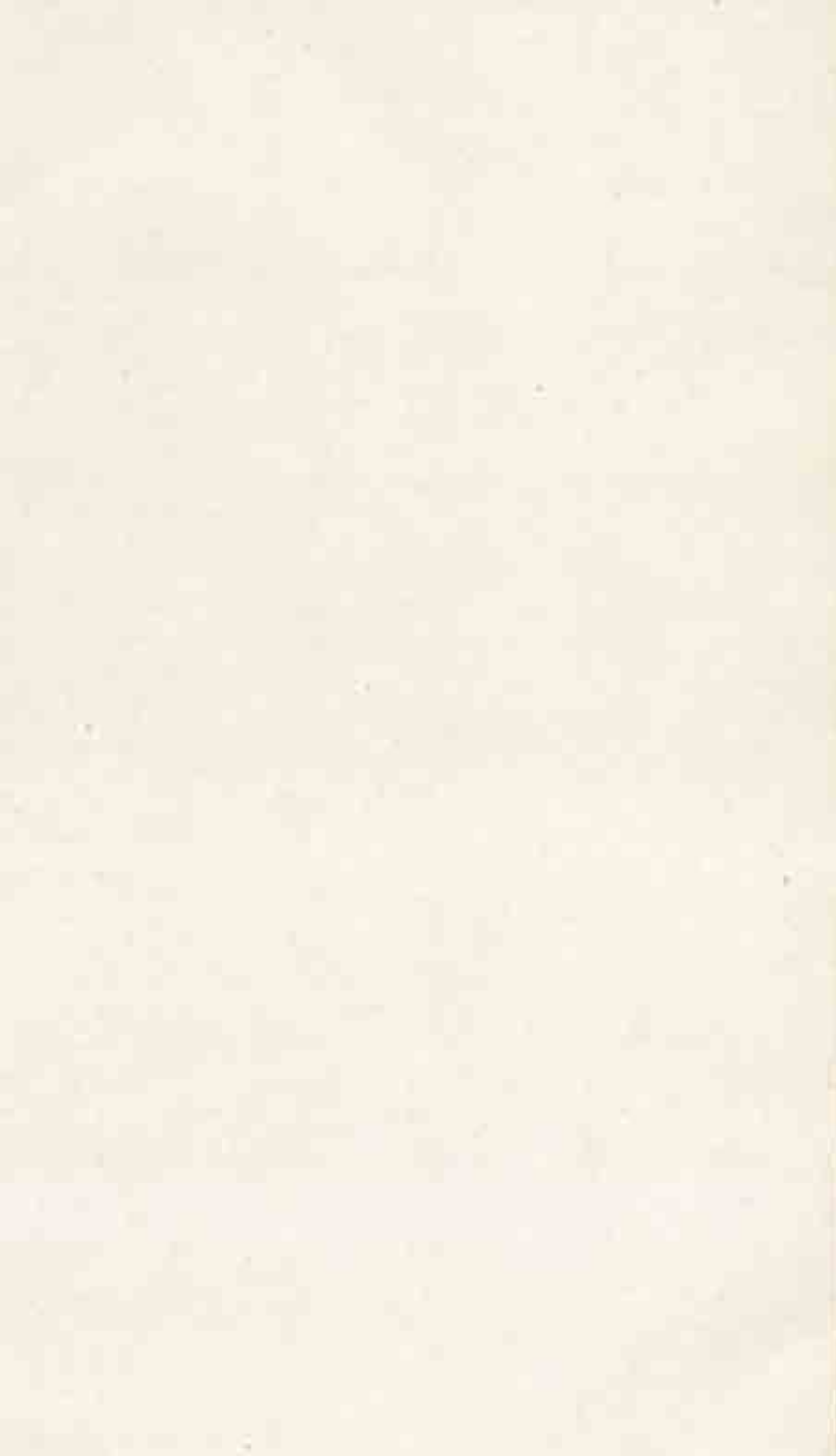




## JŪBEN ALBUM

Masaya Haruhira Collection, Shimomaseki

THE UNIVERSITY PRINTS  
BOSTONIKÉ NO TAIGA 1723-1778  
TOKUGAWA PERIOD

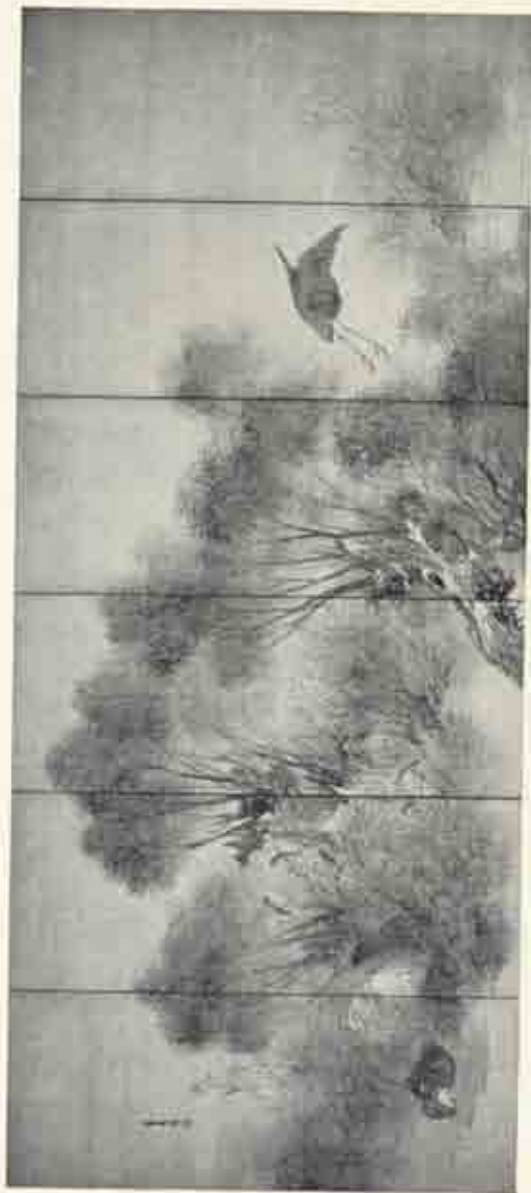




SPRING LANDSCAPE

*Sazaki Okuemon Collection, Shiga Prefecture*





WILLOW AND HERON

*Mon. Shinawake Ukiyoe, Giza*

THE UNIVERSITY PRINTS  
BOSTON

MATSUMURA GOSHUN, 1752—1811  
TOKUGAWA PERIOD





## AUTUMN FLOWERS

*Kiyomi Matsuburō Collection, Ōsaka*THE UNIVERSITY PRINTS  
BOSTONMATSUMURA KEIBUN, 1779—1843  
TOKUGAWA PERIOD







DEER

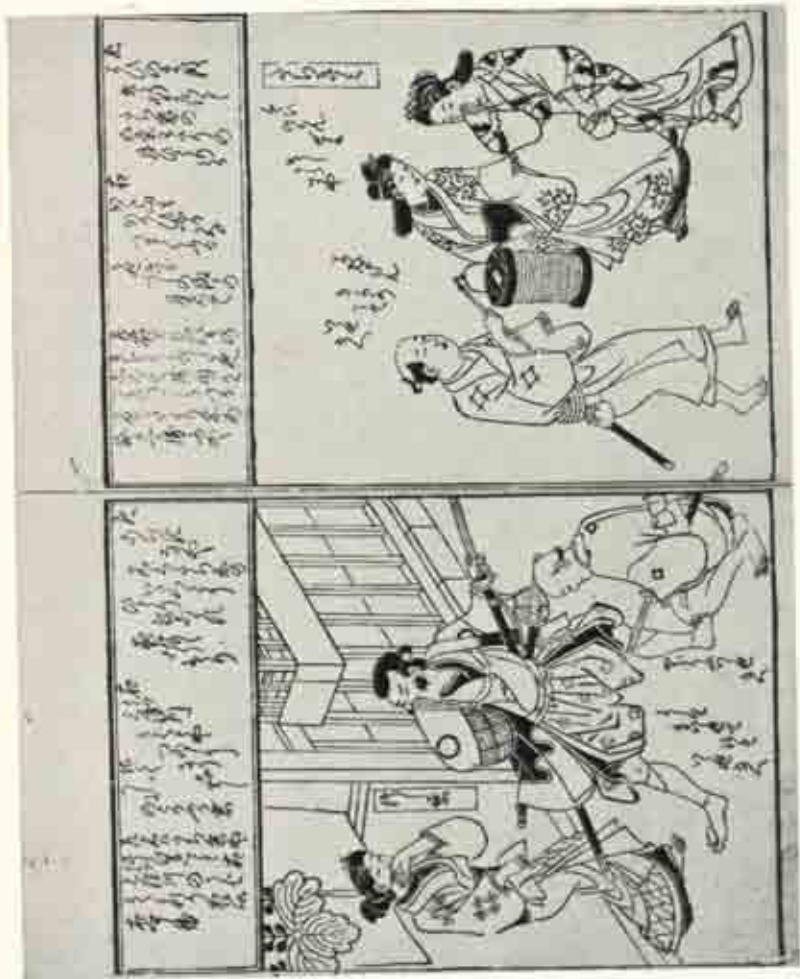
*Museum of Fine Arts, Boston*





PORTRAIT OF TAKAMI SENBEKI  
*Takami Kyūtarō Collection, Tōkyō*





WAKOKU SHOSOKU EZUKUSHI; TWO PAGES  
 (Illustrations of Various Occupations in Japan)

*Museum of Fine Arts, Boston*

HISHIKAWA MORONOBU, PUBLISHED 1685  
 UKIYOÉ SCHOOL, TOKUGAWA PERIOD

THE UNIVERSITY PRINTS  
 BOSTON





THE ACTOR MATSUMOTO SHIGEMAKI AS A WOMAN.

*Museum of Fine Arts, Boston.*

THE UNIVERSITY PRINTS  
BOSTON

TORII KIYOMASU, c. 1715.  
UKIYOE SCHOOL, TOKUGAWA PERIOD





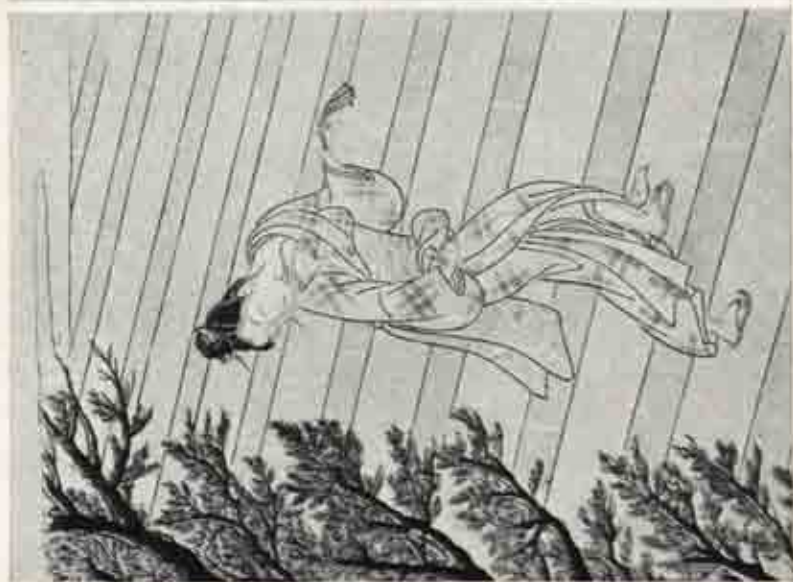


LOVERS UNDER UMBRELLA IN SNOW

*Louis V. Lefranc Collection, New York*

SUZUKI HARUNOBU, c. 1765

UKIYOË SCHOOL, TOKUGAWA PERIOD



YOUNG WOMAN ON TEMPLE STEPS

*Museum of Fine Arts, Boston*

SUZUKI HARUNOBU

CALENDAR PRINT FOR 1765

THE UNIVERSITY PRINTS

BOSTON





COMING ASHORE (Triblyach)  
*The Art Institute of Chicago*

THE UNIVERSITY PRINTS  
BOSTON

TORII KIYONAGA, 1785  
UKIYO E SCHOOL, TOKUGAWA PERIOD





ICHIKAWA EBIZO IV AS WASHIZUKA KWANDAYU(?)

*Metropolitan Museum, New York*

TOSHUSAI SHARAKU, 1794  
UKIYO-E SCHOOL,  
TOKUGAWA PERIOD



FAMOUS GEISHA IN A NIWAKA PERFORMANCE

*The Art Institute of Chicago*

KITAGAWA UTAMARO, C. 1793  
THE UNIVERSITY PRINTS  
UKIYO-E SCHOOL,  
TOKUGAWA PERIOD  
BOSTON





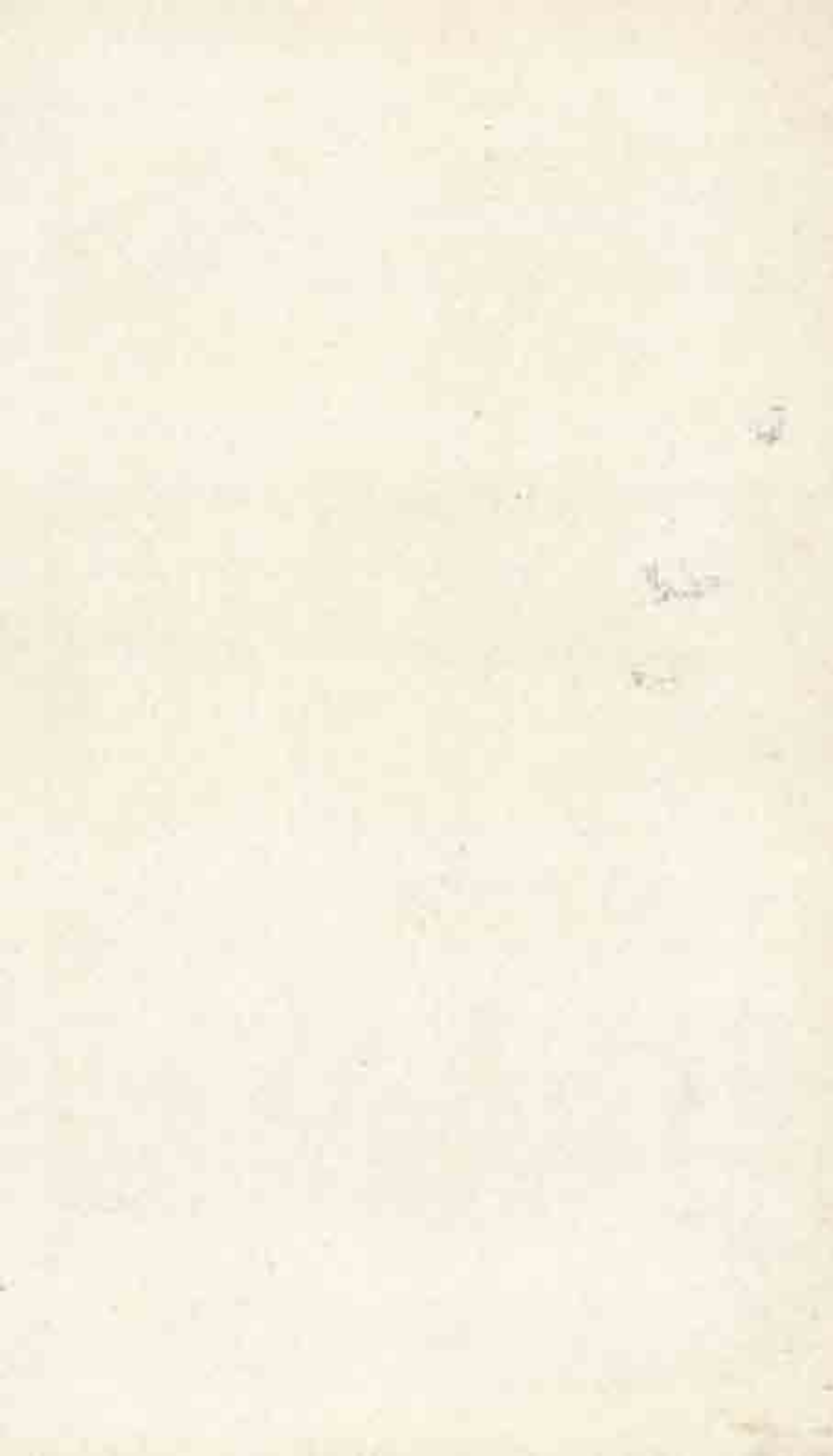
THIRTY-SIX VIEWS OF FUJI: THE WAVE

*Museum of Fine Arts, Boston*

KATSUSHIKA HOKUSAI, 1760—1849  
UKIYOË SCHOOL, TOKUGAWA PERIOD

THE UNIVERSITY PRINTS  
BOSTON







FIFTY-THREE STAGES OF THE TŌKAI DŌ SHŪNŌ

*Museum of Fine Arts, Boston*

ANDŌ HIROSHIGE, 1797-1858  
UKIYOE SCHOOL, TOKUGAWA PERIOD

THE UNIVERSITY PRINTS  
BOSTON



*"A book that is shut is but a block"*

CENTRAL ARCHAEOLOGICAL LIBRARY

GOVT. OF INDIA  
Department of Archaeology  
NEW DELHI.

Please help us to keep the book  
clean and moving.