

GOVERNMENT OF INDIA
ARCHAEOLOGICAL SURVEY OF INDIA
ARCHAEOLOGICAL
LIBRARY

ACCESSION NO. **31068**

CALL No. **312.0954/C.I.(21)**

D.G.A. 79

OF INDIAN OFFICIAL
S.

e, W. C., London.

n.

ster, S. W., London.

8-74, Carter Lane, E. C., and 39, New

V., London.

W. THACKER & Co., 2, Creed Lane, London, E. C.
LUZAC & Co., 46, Great Russel Street, London, W. C.
B. H. BLACKWELL, 50 & 51, Broad Street, Oxford.
DEIGHTON BELL & Co., Limited, Cambridge.
T. FISHER UNWIN, Limited, 1, Adelphi Terrace, London, W. C.
WHELDON & WESLEY, Limited, 2, 3 & 4, Arthur Street, New Oxford Street, London,
W. C. 2.
ERNEST LEROUX, 28, Rue Bonaparte, Paris.
MARTINUS NIJHOFF, The Hague.
OTTO HARRASSOWITZ, Leipzig.
FRIEDLANDER AND SOHN, Berlin.

IN INDIA.

HIGGINBOTHAM & Co., Madras.
V. KALYANARAMA IYER & Co., Madras.
P. R. RAMA IYER & Co., Madras.
THACKER, SPINK & Co., Calcutta.
W. NEWMAN & Co., Calcutta.
S. K. LAHIRI & Co., Calcutta.
R. CAMBRAY & Co., Calcutta.
THE ASSOCIATION PRESS, Calcutta.
THACKER & Co., Limited, Bombay.
SUPERINTENDENT, GOVERNMENT PRINTING AND STATIONERY, Poona.
D. B. TARAPOREVALA, SONS & Co., Bombay.
GOPAL NARAYEN & Co., Booksellers, etc., Bombay.
Mrs. RADHABAI ATMARAM SAGOON, Bookseller, etc., Bombay.
RAMCHANDRA GOVIND & SON, Booksellers, etc., Bombay.
BOMBAY TRACT AND BOOK SOCIETY, Bombay.
N. B. MATHUR, N. K. H. Press, Allahabad.
MANAGER, THE "HITAVADA," Nagpur.
MANAGER, NYAYASHRAYA PRESS, Poona.
RAMA KRISHNA & SONS, Lahore.
SUNDAR PANDURANG (RAMNATH SUNDAR, the Successor), Bombay.
MANAGER, NEW KITABKHANA, Poona.
KARSANDAS NARANDAS & SONS, Surat.
N. M. TRIPATHI & Co., Booksellers, etc., Bombay.
MANGALDAS HARKISANDAS, Bookseller, etc., Surat.
KING & Co., Bombay.
MANAGER, SHRI SANKAR KARNATAKA PUSTAKA BHANDARA, Dharwar.*
MANAGER, BUTTERWORTH & Co., Ltd., Booksellers, Calcutta.
MANAGER, INDIAN BOOK DEPOT, Bombay.
THE OXFORD BOOK AND STATIONERY COMPANY, Delhi.

* For the sale of official Kanarese publications in the Belgaum, Dharwar, Bijapur and Kanara districts.

D3465
vol. 8

CENSUS OF INDIA, 1921

VOLUME VIII

~~A N~~
~~7724~~

BOMBAY PRESIDENCY

31068

PART III

REPORT AND TABLES—ADEN

BY

E. M. DUGGAN

CHAIRMAN, ADEN SETTLEMENT COMMITTEE
IN CHARGE OF CENSUS OPERATIONS, ADEN



312.0954
C. I. (21)



BOMBAY
PRINTED AT THE GOVERNMENT CENTRAL PRESS
1923

THE UNIVERSITY OF CHICAGO

LIBRARY

THE UNIVERSITY OF CHICAGO

LIBRARY

THE UNIVERSITY OF CHICAGO

LIBRARY

THE UNIVERSITY OF CHICAGO

LIBRARY

THE UNIVERSITY OF CHICAGO

LIBRARY

THE UNIVERSITY OF CHICAGO

LIBRARY

THE UNIVERSITY OF CHICAGO

LIBRARY

THE UNIVERSITY OF CHICAGO

LIBRARY

THE UNIVERSITY OF CHICAGO

LIBRARY

THE UNIVERSITY OF CHICAGO

LIBRARY

THE UNIVERSITY OF CHICAGO

LIBRARY

THE UNIVERSITY OF CHICAGO

LIBRARY

THE UNIVERSITY OF CHICAGO

LIBRARY

THE UNIVERSITY OF CHICAGO

LIBRARY

THE UNIVERSITY OF CHICAGO

LIBRARY

REPORT.

PREVIOUS ENUMERATIONS.

1. The first Census of the Bombay Presidency (of which Aden is administratively speaking a part) was held in 1854 when an estimate of the population was made but it was not till 1872 that the first enumeration was attempted and its accuracy is extremely doubtful. From 1881 inclusive however organized counts have been taken at ten-year intervals and the general results will be found in Imperial Table II. The Census of the 18th March 1921 may therefore be said to be the seventh of any description, the sixth based on an actual count and the fifth of reasonable accuracy. The reader who wishes to obtain a general idea of the results of this last Census with the minimum of trouble should turn to paragraph 9 hereafter.

CONDUCT OF PRESENT ENUMERATION.

2. The Chairman of the Aden Settlement Committee was appointed as the Officer in charge of the Census Operations and commenced work in July 1920. Captain J. Gordon of the Bombay Political Department who was acting as Chairman during my absence on leave was the Officer in charge of the operations until the end of September 1920 when Major J. C. Tate of the same Department took over charge until my return from leave in the middle of October. The first step taken was the preparation of the General Village Register in which was shown a complete list of the various divisions of Aden and its dependencies, the number of houses and the number of workers available for the enumeration. The divisions were then divided into blocks, 50 houses on the average going to a block in the Crater, Maalla and Tawahi divisions and 100 houses on the average going to a block in Sheikh Othman. The blocks were grouped into circles and the circles into charges. The numbers are shown below:—

Charges	8
Circles	27
Blocks	170

All the charge Superintendents, supervisors and enumerators were engaged from Government and Local Fund offices. One outsider volunteered to do work as enumerator and only two paid men had to be engaged. All charge Superintendents, supervisors and enumerators were given a practical demonstration by me of what they had to do. The need for this and the difficulty involved in the taking of a Census in a place of this nature was well illustrated by the answer of an enumerator who, when asked by me as to what entry he would make for the age of a *purdah* lady whom he could not see and whose male relative refused to give it, replied "I would make a guess at it!" I admit the problem defeated me so I told him to leave the entry blank. As the schedules were filled in, they were gradually checked and rechecked by all Superior Officers right up to the Census night. The only exception was in the case of the enumeration of houseless people and of the Port population which took place on the final night of the Census. A very slight dislocation was caused owing to the unavoidable absence on that night of certain enumerators but their places were filled up without difficulty by reserve enumerators. The date selected for the final Census did not coincide with any big holiday. The Aden Jews who live for the most part in the Crater division abstain from doing any work or business between 6 p.m. on Fridays and 6 p.m. on Saturdays, but although the final Census night—the 18th March 1921—was a Friday this caused no practical inconvenience and everything passed off smoothly and well. All enumerators went out as soon as it was dark to take the final check. New comers and newly born children were added to the list and persons who were absent on that date from Aden and its dependencies were struck off the list. The next morning all enumerators, supervisors and Charge Superintendents met together. The enumerators checked each other's totals. The supervisor then combined the block totals into a circle total. The Charge Superintendents then added up the totals of all the blocks and furnished them to me. Every one concerned worked with a will and I was able to telegraph the totals to the Census Commissioner at Simla and to the Provincial Superintendent at

Poona on the 19th March 1921 or on the day after the Census night. Special care was taken that these provisional totals showing the numbers of occupied houses, males, females and total population should be as accurate as possible and the final recorded result only varied from the revised provisional totals by about 0.12 per cent. The revised provisional total was 56,571 and the finally recorded total was 56,500. The total number of Census Officers employed was 255 or 0.4 per cent. of the subsequently ascertained population. Owing to the large number of houseless people in Aden 63 Census Officers were employed in enumerating them on the night of the final Census.

STATISTICS DECIDED ON.

3. Certain changes in the volume of Imperial Tables etc. were ordered in General Department Order No. 466 dated the 13th January 1921 and it was decided by Government that information regarding Aden should be excluded from the Imperial Tables of 1921 except Tables I and II and that the information excluded should be printed by the Chairman, Aden Settlement, in the form of a separate volume. Correspondence then ensued with the Provincial Superintendent of Census Operations, Poona, and details as to the working and salaries of the Abstraction office were arranged with him. He very kindly supplied me free of cost with the requisite number of slips, sorter's tickets, abstraction tables, etc., etc.

In my letter No. 390 dated the 31st May 1921 I stated that I had decided to print the following tables :

Imperial Tables Nos. I, II, VI, VII, VIII, X, XII, XIII (on the same lines as last Census), XV, XVI(a) and XVI(b), XVII, XXII (all parts) and Provincial Table No. 1.

The above arrangements were reported both to the Provincial Superintendent of Census Operations and to the Census Commissioner, Simla. No returns of Registers were sent to the Provincial Superintendent of Census Operations as in his letter No. Abs./23 dated the 9th June 1921 he had left the whole matter to me.

TABULATION OF RESULTS.

4. An Abstraction office was opened early in April 1921 in the Aden Settlement office and three temporary whole-time clerks were engaged in copying, sorting and preparing the Census Tables. Four half-time checkers, one half-time supervisor and one Deputy Superintendent were appointed to check and supervise the whole thing. Owing to the work of the Aden Settlement certain changes had to be made in the personnel but fortunately only among the checkers. There was practically no change from the procedure of 1911. The first thing done was to copy out from the schedules the particulars of each individual on to a slip 2" x 4½". The colour of the slips indicated the religion; civil condition was shown by a symbol of varying shape and sex by the symbol being solid for a male and merely outlined for a female. The remaining details such as age, caste, occupation, birth-place, language, literacy, knowledge of English and infirmities had to be written up in pencil. This copying and checking was completed by the end of June 1921.

Sorting was then commenced. Pigeon-holes were provided and slips were arranged therein in accordance with the details required for each table. Bundles of a hundred were tied up in the great majority of cases and the requisite figures were entered on sorter's tickets. This method enabled a good and continuous check to be exercised by the supervising staff and the sorters had no opportunity to conceal or make away with slips. When any discrepancy arose Register A was at once referred to and the mistakes were corrected; on one occasion (sorting of table VII) one slip was found missing and all the general schedules had to be looked up again and the particular slip was re-written. Fortunately except for this incident nothing worth mentioning took place and the sorting passed off successfully and was completed on the 30th September 1921. Side by side with the sorting one temporary clerk was detached to do the preparation of all tables from the sorter's tickets. This work was practically completed on the 25th October 1921. All the sorter's tickets and tables were then finally checked and the whole work of tabulation was completed by the 25th October 1921.

COST.

5. The cost of the present Census has been Rs. 4,718 as compared with Rs. 1,873 in that of 1911. This cost is shared in equal proportions between the Government and the Aden Settlement Fund. The increase is due partly to the increase of the population enumerated but mainly to the great rise in wages and the cost of all materials.

SUGGESTIONS FOR THE NEXT CENSUS.

6. The following brief suggestions may be of use to the officer who is placed in charge of the next Census Operations:—

Preliminary and final enumeration.

The general arrangements should be much the same as those made in the present Census. The work should commence early in July or August at the latest and all necessary details must be settled before January so as to be ready for the Census to be taken in March of the next year. Care should be taken to employ as many men as possible who have worked in the present Census and who may be in Aden at the time. The great thing to do is to select the present *supervisors* for this work if they are still available.

Census Abstraction.—Copyists and sorters.

Intelligent whole-time men should be employed for this work, as it is rather technical and requires a good deal of local knowledge.

Checkers.

In the present Census men in the permanent employ of the Aden Settlement were working half time only and were given a bonus of Rs. 60 each.

This work requires careful supervision and was done under great difficulties. I would very strongly recommend that full-time men be employed for this work and that they should temporarily be taken from the permanent staff for the purpose.

Supervisor.

This officer should also be a full-time man and should conduct all correspondence, keep charge of the records and supervise the working of the checkers as soon as their portion of the work is finished.

Deputy Superintendent of Census.

This officer should also be a full-time officer and should devote his whole time and energy to Census work right from the beginning of July or so up to August of the next year.

ACKNOWLEDGMENTS.

7. My thanks are due in the first place to the whole population of Aden both Civil and Military, official and non-official, as without their hearty co-operation and help the conduct of the Census would have been a much more difficult matter than it was. In spite of the heterogeneous nature of the people and of the fact that so large a proportion of them are illiterate immigrants from comparatively uncivilized areas no trouble of any sort arose—a striking tribute to the good sense and amiability of the people and to the tact exercised by the enumerators in paying their house-to-house visits. Among the actual workers the first and foremost was Mr. E. R. Kanga, the Secretary and Head Assessor to the Aden Settlement Committee. He was appointed Deputy Superintendent of Census for Aden and placed on whole-time special duty for the work. His experience gained in the previous Census and his whole-hearted devotion to duty in the present one were invaluable and I owe him a deep debt of gratitude.

The following gentlemen also rendered material help and co-operation both in the actual enumeration and in the tabulation work afterwards:—

- | | |
|---------------------------|--|
| 1. Mr. Premji Meghji | .. Supervisor, Charge A, and Supervisor of Census Abstraction and Tabulation work. |
| 2. Mr. J. N. Pajnigar | .. Supervisor, Charge C, and Checker of Census Tables. |
| 3. Mr. Sayed M. Irshadali | .. Supervisor, Charge C. |
| 4. Mr. Abdul Habib | .. Supervisor, Port Limits. |
| 5. Mr. W. A. Morris | .. Supervisor, Perim Coal Co. Division. |

6. Mr. Ismail Abdulla	.. Enumerator and outsider Volunteer.
7. Mr. Ali Ahmed Khan	.. Sheikh Othman Houseless Block Supervisor.
8. Mr. Mohamed A. Rahim	.. Supervisor, Perim.
9. Mr. Ajedya Singh	.. Census Enumerator, Military Limits.
10. Mr. Saeed Moosa	.. Enumerator and Checker.
11. Mr. Saeed S. Bamadhaf	.. Do.
12. Mr. Dulpatram Samji	.. Do.
13. Mr. Shapurji Sorabji	.. Do.
14. Mr. Mohamed Lall Khan	.. Do.
15. Mr. Sayed Mohamed Hydershaw	.. Do.

Lastly I wish especially to mention the Military and the Aden Police to whose tactful help and assistance the complete absence of disturbances of any kind was largely due.

DESCRIPTION OF ADEN.

8. Before proceeding to the results of the Census a brief description of the place will, it is hoped, not be unwelcome. The Settlement, as it is called, of Aden consists of four parts. The first of these and the most important is Aden itself, a rocky peninsula of volcanic origin and about 20 square miles in area bearing in many respects a strong resemblance to Gibraltar. This is connected to the mainland of Arabia by a sandy isthmus about three miles long and one broad called Khor Maksar and on the mainland near the end of this isthmus is the large village or small town of Sheikh Othman with its outlying hamlets of Imad and Hiswa. Between the Peninsula of Aden itself to the South and the mainland to the North lies the bay forming the harbour which is bounded on the East by the Isthmus of Khor Maksar and on the West by another rocky peninsula known as Little Aden. The above make up the British territory of Aden but in addition to it this Census deals also with the small British island of Perim at the Southern entrance to the Red Sea. In addition to its importance as a fortress Aden is a coaling station and oil fuel depôt for both ships of war and mercantile vessels. It also has a flourishing export trade in coffee, hides, skins, gums, spices, ostrich feathers, pearls and other commodities produced in the surrounding countries but for all of these it is an entrepot or collecting centre only and it serves in a similar manner as a distributing centre for imported piece-goods, hardware, kerosine oil and grain, etc. The sole local product of any importance to which Aden itself can lay claim is salt which is made by evaporating sea water and of which about 150,000 tons are exported annually, most of it going to Calcutta.

The assorted nature of its trade is reflected in the kaleidoscopic variety of the inhabitants of the place and of the languages they speak. English, Americans, French, Italians and Greeks, Somalis and Abyssinians, Arabs of all descriptions and Arabian Jews and every kind of Indian with a sprinkling of Persians, Chinese and other Asiatics earn their livelihood on the barren rocks of Aden though not a single one of them by agriculture. Their meat in the shape of sheep and goats comes from Somaliland, their grain and rice from India, their vegetables such as they are from Lahej 30 miles away on the mainland, their drinking water is either distilled sea water or that from brackish and salt impregnated wells which might make the fortune of a Spa but is certainly unpleasant in its effects when used as a daily diet. In fact everything they eat is imported except the excellent fish which swarm in the surrounding seas.

GENERAL RESULTS.

9. I have already had occasion to use the results of the Census for various purposes such as water supply and electricity schemes, etc., and have found that admirable though they may be for general statistical purposes the standard tables laid down are not fully suitable for local investigations, mainly owing to the fact that the population of Aden is concentrated in certain well-defined and separated areas. I have therefore prepared the additional tables which will be found immediately after this report and before the standard tables. The Special Table 1 gives the results of the present and past counts in moderate detail. Special Table 2 is a summary and Special Table 3 gives the percentage increase in population in the various localities over the decennial periods.

From the Special Table I it will be seen that the population counted in 1921 amounted to 56,500 made up as follows:—

Place.	Males.	Females.	Total	Ratio of females to males; 1 to
Crater	12,245	8,183	20,428	1·5
Maalla	2,206	1,185	3,391	1·9
Tawahi and St. Point	5,903	2,127	8,030	2·8
Port	1,647	83	1,730	20·
Total in civil limits in Fortress	22,001	11,578	33,579	1·9
Sheikh Othman and hamlets	6,430	4,876	11,306	1·3
Total in civil limits in Aden Settlement	28,431	16,454	44,885	1·7
Cantonment and Military	8,287	1,253	9,540	6·6
Total in Fortress	32,194	17,538	49,732	1·8
Total in Settlement	35,330	17,702	53,032	2·
Perim	1,676	399	2,075	4·2
Grand Total	38,394	18,106	56,500	2·1

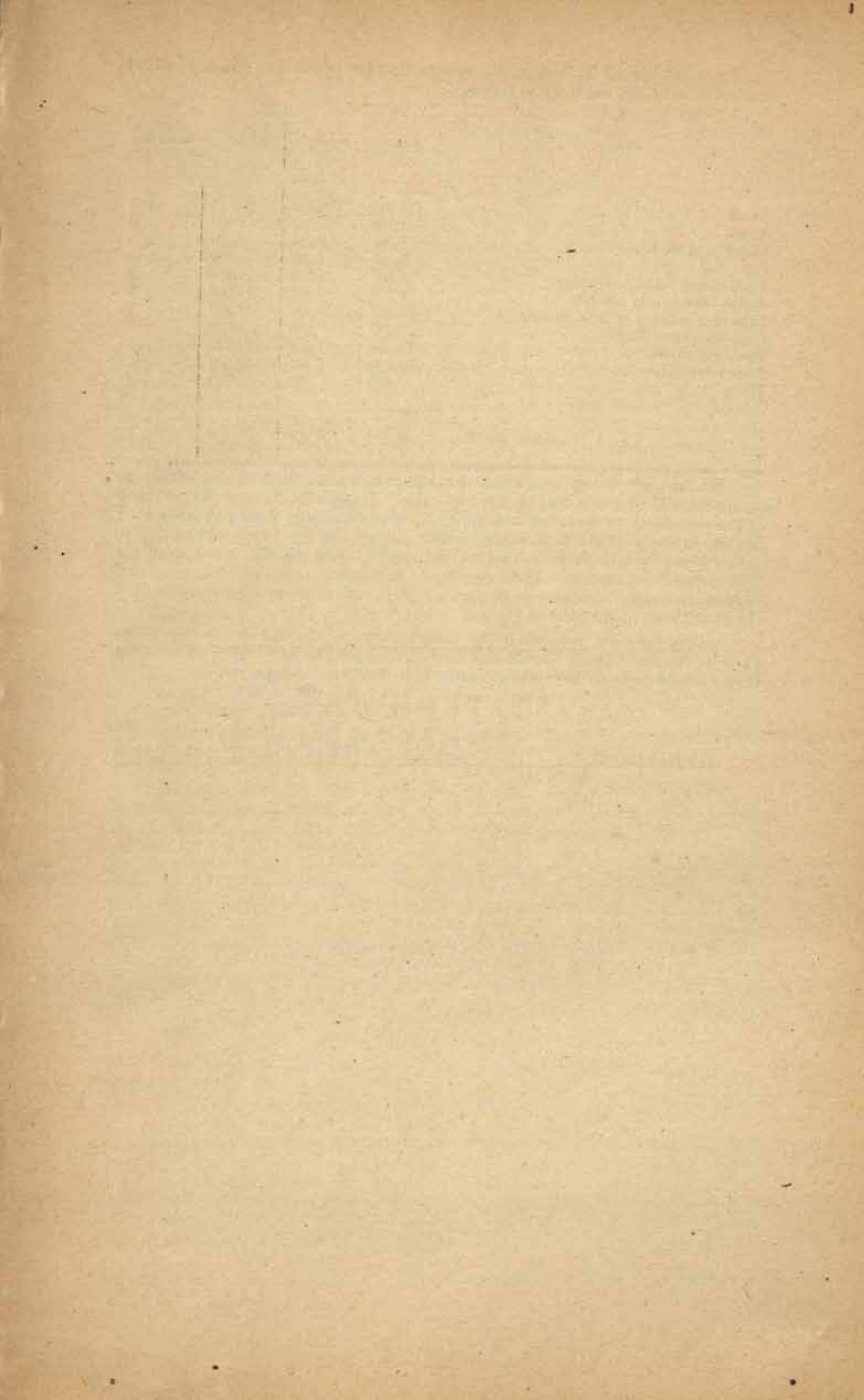
The high percentage of males to females even among the civil population as compared with Western countries is noticeable. It is due to the fact that so many of the population of Aden are males who come there only to work and leave their families in the Hinterland or wherever their homes may be. It is satisfactory to notice from Special Table 3 that we are steadily reducing the numbers of the "Houseless" population. These people are immigrant coolies and labourers and beggars the control of whom constitutes one of our difficulties in Aden and who are a constant thorn in the side of the sanitarian.

Among the civil population the main increase in the last decade has taken place at Sheikh Othman, Maalla and Tawahi and for the time being at least the Crater would seem to have about reached the limits of its capacity.

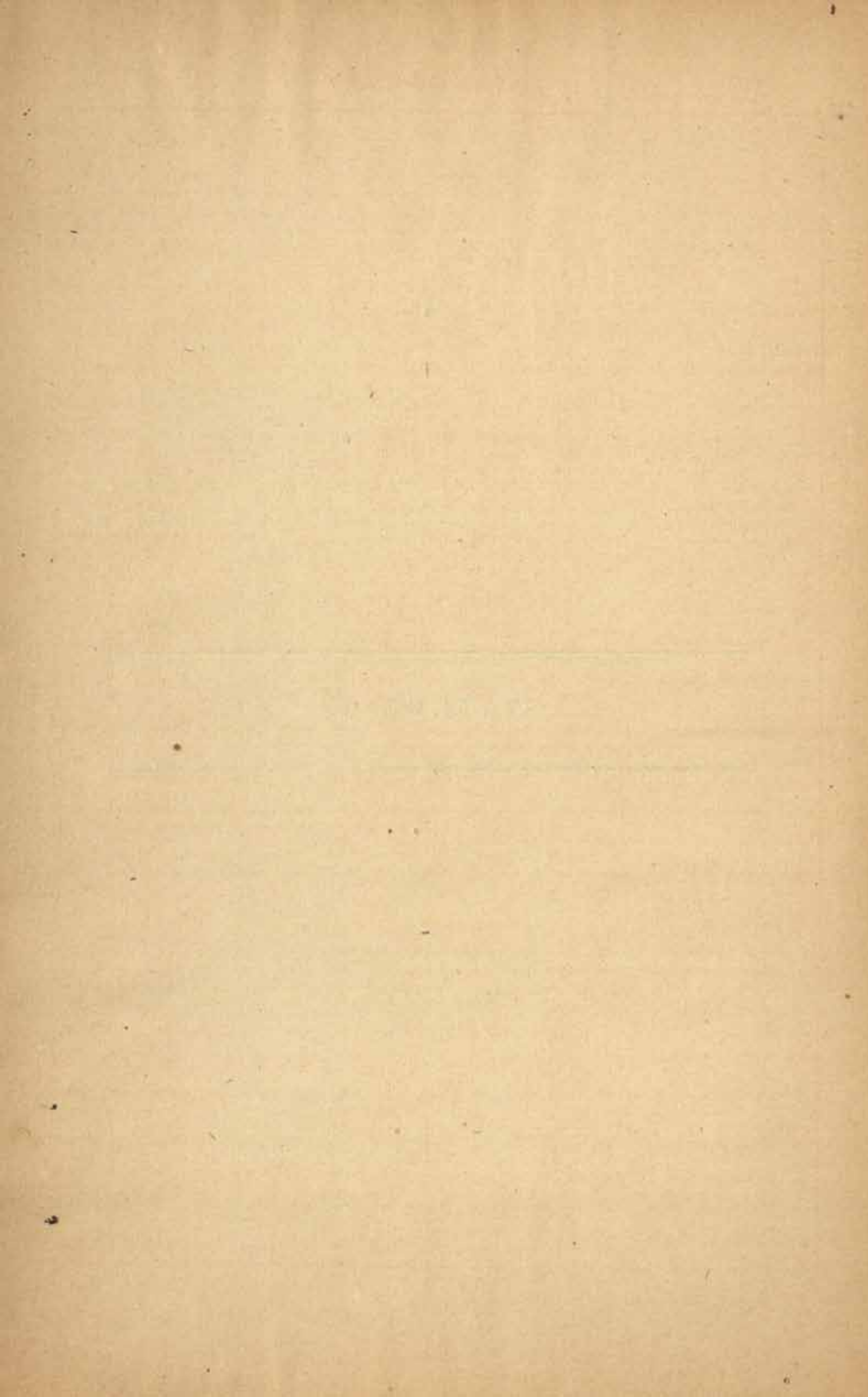
E. M. DUGGAN,

Chairman, Aden Port Trust and Aden Settlement
Committee, and Officer in charge of the Census.

15th March 1923.



STATEMENTS



SPECIAL TABLE No. 1.

Section.	Number of occupied houses.	Males.					Females.				Total population.			
		Census of					Census of				Census of			
		1921.	1891.	1901.	1911.	1921.	1891.	1901.	1911.	1921.	1891.	1901.	1911.	1921.
CIVIL.														
Crater A	403	3,266	2,574	5,840	
Crater B	217	1,403	556	1,959	
Crater C	422	2,144	1,855	3,999	
Crater D	270	1,973	1,291	3,174	
Crater E	238	603	603	1,206	
Crater F	337	1,650	1,385	3,035	
Crater Houseless	2,382	2,486	2,627	1,200	54	48	35	0	2,436	2,484	2,662	1,215	
Crater total	1,917	11,381	10,806	12,220	12,245	6,439	6,719	7,631	8,183	17,820	17,524	19,851	20,428	
Maalla	327	526	854	1,205	1,650	369	602	931	1,163	895	1,456	2,136	2,815	
Maalla Houseless	345	291	785	544	14	15	24	22	359	306	809	566	
Maalla Barrier Gate	12	12	
Maalla total	327	871	1,145	1,990	2,206	383	617	955	1,185	1,254	1,762	2,945	3,391	
Tawahi, Hedjuff and Steamer Point	591	4,261	3,703	3,953	4,109	1,253	1,374	1,671	2,125	5,514	5,167	5,624	6,234	
Tawahi Houseless	1,884	1,188	1,339	1,456	43	31	15	2	1,927	1,219	1,354	1,452	
Hedjuff Houseless	568	316	190	344	568	316	190	344	
Tawahi, Hedjuff and Steamer Point total	591	6,715	5,297	5,482	5,903	1,296	1,405	1,686	2,127	8,009	6,702	7,168	8,030	
Port, on land	35	..	49	67	95	..	2	6	14	..	42	73	109	
Port, afloat	11	2,095	2,778	2,390	1,552	27	96	8	69	2,122	2,874	2,398	1,621	
Fortress Civil Limits total	2,881	21,060	20,066	22,149	22,001	8,145	8,838	10,296	11,578	29,305	28,904	32,435	33,579	
Sheikh Othman	2,242	3,241	2,921	3,647	5,485	3,560	2,746	3,174	4,137	6,891	5,667	6,821	9,922	
.. Houseless	389	567	335	486	53	32	5	27	412	599	338	513	
Sheikh Othman total	2,242	3,631	3,488	4,082	5,971	3,593	2,778	3,177	4,464	7,314	6,266	7,159	10,435	
Imad Hissa and Little Aden	205	316	362	461	459	236	329	370	412	552	682	831	871	
Aden Settlement Civil Limits total	5,328	24,997	23,916	26,692	28,431	11,974	11,936	13,833	16,454	36,971	35,862	40,520	44,845	
IN CANTONMENT AND MILITARY LIMITS														
Tawahi and Steamer Point	311	942	1,633	1,283	1,370	270	383	305	358	1,312	2,110	1,585	1,728	
Crater, Isthmus and Maalla	524	2,191	1,675	1,863	2,393	556	401	290	726	2,657	2,076	2,183	3,119	
Fortress total	839	3,043	3,308	3,146	3,763	826	784	595	1,084	3,869	4,192	3,761	4,847	
Khor Makkar	192	292	117	263	581	131	134	150	94	443	151	412	685	
Sheikh Othman	236	29	2,543	70	29	2,615	
Aden Settlement Cantonment and Military total	1,267	3,335	3,425	3,437	6,899	977	918	745	1,248	4,312	4,343	4,182	8,147	
Outside Settlement	1,388	5	1,393	
Cantonment and Military total	1,267	3,335	3,425	3,437	8,287	977	918	745	1,253	4,312	4,343	4,182	9,540	
Total in the Settlement of Aden	6,535	28,332	27,341	30,139	35,330	12,951	12,854	14,578	17,702	41,283	40,195	44,717	53,032	
Perim	866	1,236	1,048	1,002	1,678	109	188	297	399	1,345	1,236	1,299	2,075	
Grand total of the whole population counted	6,841	29,568	28,389	31,141	36,994	13,060	13,042	14,875	18,106	42,628	41,431	46,016	55,509	

SPECIAL TABLE No. 2.

Section.	Population in			
	1891	1901	1911	1921
Houseless Crater	2,436	2,484	2,062	1,215
.. Maalla	359	306	809	566
.. Hedjuff	568	316	190	344
.. Tawahi	1,927	1,219	1,354	1,452
.. Total Fortress	5,290	4,325	4,415	3,577
.. Shaikh Othman	413	599	338	513
.. Total	5,703	4,924	4,753	4,090
(The above are included in the figures that follow).				
Crater	17,820	17,524	19,851	20,428
Maalla	1,254	1,762	2,945	3,391
Tawahi and Steamer Point	8,009	6,702	7,168	8,030
Port	2,122	2,916	2,471	1,730
Total in Civil limits in the Fortress or Peninsula of Aden proper	29,205	28,904	32,435	33,579
Shaikh Othman	7,214	6,266	7,159	10,435
Imad Hiswa and Little Aden	552	682	831	871
Total in Civil limits in the Aden Settlement	36,971	35,852	40,525	44,885
Cantonment and Military in the Fortress	3,869	4,192	3,741	4,847
In Shaikh Othman and Khor Maksar	443	151	441	3,300
Total in the Fortress	33,074	33,096	36,176	38,426
Total in Shaikh Othman and Imad Hiswa and Little Aden	8,209	7,099	8,431	14,606
Total in the Settlement of Aden (omitting Perim)	41,283	40,195	44,607	53,032

SPECIAL TABLE No. 3.

Section.	Percentage increase in population between		
	1891 and 1901	1901 and 1911	1911 and 1921
Houseless population (included in figures that follow)	-14	- 4	- 14
Crater	- 3	+ 13	+ 2
Maalla	+42	+ 67	+ 15
Tawahi and Steamer Point	-17	+ 6	+ 12
Port	+37	- 16	- 30
Total in Civil limits in the Fortress or Peninsular of Aden proper	- 2	+ 12	+ 3
Shaikh Othman	-14	+ 14	+ 45
Imad Hiswa and Little Aden	+23	+ 21	+ 4
Total in Civil limits in Aden Settlement	- 3	+ 13	+ 10
Cantonment and Military in Fortress	+ 8	- 11	+ 29
.. .. . in Shaikh Othman and Khor Maksar	-65	+192	+748
Grand total in Fortress	+0.06	+ 9	+ 6
.. .. . Shaikh Othman, Imad Hiswa and Little Aden	-13	+ 18	+ 73
Grand total in the Settlement of Aden (excluding Perim)	- 2	+ 10	+ 18

REGISTER A—POPULATION OF CHARGES BY SEX AND RELIGION.

9

(CIVIL, CANTONMENT, MILITARY, PORT AND RAILWAY LIMITS.)

Charge Nos. A to H

District Aden.

Names of Charges.	Names of Sections.	Numbers of occupied houses.	TOTAL POPULATION.			HINDUS.		MAHOMEDANS.		JAINS.		PARSIS.	
			Males.	Females.	Total.	Males.	Females.	Males.	Females.	Males.	Females.	Males.	Females.
			4	5	6	7	8	9	10	11	12	13	14
Charge A ..	Crater, Secs. A, C & E ..	1,063	6,013	5,032	11,045	338	180	3,568	2,923	115	44	61	25
Charge B ..	" " B, D & F ..	854	6,232	3,151	9,383	237	135	5,802	2,947	98	36	11	9
Charge C ..	Maalla, Hedjuff and Tawahi ..	846	7,962	3,279	11,241	132	38	7,293	2,970	4	..	151	52
Charge D ..	Shaikh Othman, Imad Hiswa and Little Aden ..	2,436	6,447	4,672	11,319	48	18	6,146	4,677	9	1
Charge E ..	Cantonment Limits and Military Population ..	1,200	8,241	1,253	9,494	2,469	51	4,227	1,032	1	..	6	..
Charge F ..	Port Limits and Sea-going Vessels ..	46	1,647	83	1,730	10	..	1,359	18	1	..
Charge G ..	Perim ..	306	1,676	399	2,075	17	4	1,520	390	6	..
Charge H ..	Railway Limits ..	90	176	37	213	10	4	152	31	1	..
Total ..		6,841	38,394	18,106	56,500	3,261	430	30,067	14,988	237	81	237	86

Names of Charges.	Names of Sections.	CHRISTIANS.		AHMISTS.		SIKHS.		JEWS.		BUDDHISTS.		INDEFINITE BELIEFS.	
		Males.	Females.	Males.	Females.	Males.	Females.	Males.	Females.	Males.	Females.	Males.	Females.
		15	16	17	18	19	20	21	22	23	24	25	26
Charge A ..	Crater, Secs. A, C & E ..	51	21	2	..	3	..	1,675	1,838	1
Charge B ..	" " B, D & F ..	10	3	2	..	69	21	3
Charge C ..	Maalla, Hedjuff and Tawahi ..	270	142	97	73	15	1	..	3
Charge D ..	Shaikh Othman, Imad Hiswa and Little Aden ..	52	7	1	..	191	169
Charge E ..	Cantonment Limits and Military Population ..	1,239	162	279	3	8	5	8	..	4	..
Charge F ..	Port Limits and Sea-going Vessels ..	192	42	1	..	30	19	13	1	41	3
Charge G ..	Perim ..	92	3	10	2	31
Charge H ..	Railway Limits ..	9	2	3	..	1
Total ..		1,915	383	2	..	389	3	2,281	2,127	70	2	45	7

District Aden.

Name of Revenue Village.	Numbers of occupied houses.	TOTAL POPULATION.			HINDUS.		MUSLIMS.*		JAINS.		PARSIS.		CHRISTIANS.		ANIMISTS.		SIKHS.		JEWS.		BUDDHISTS.		INDEFINITE BELIEFS.		
		Males.		Females.	Males.	Females.	Males.	Females.	Males.	Females.	Males.	Females.	Males.	Females.	Males.	Females.	Males.	Females.	Males.	Females.	Males.	Females.	Males.	Females.	
		3	4	5	6	7	8	9	10	11	12	13	14	15	16	17	18	19	20	21	22	23	24	25	
CIVIL LIMITS, FORTRESS.																									
Section A ..	403	2,266	2,574	5,840	336	180	866	502	115	44	99	11	32	11	2	1,856	1,826	
" B ..	247	1,403	556	1,959	109	100	1,068	394	85	32	4	3	10	3	2	..	19	15	1	
" C ..	422	2,144	1,855	3,999	2	..	2,664	1,830	20	8	6	6	3	..	16	10	1	
" D ..	270	1,973	1,291	3,174	9	7	1,948	1,187	13	4	2	2		
" E ..	238	603	403	1,006	588	591	2	6	10	4	3	3		
" F ..	337	1,850	1,385	3,235	28	19	1,812	1,357	7	6	2	2	4		
Crater, houseless	Houseless	1,206	9	1,215	1	..	1,150	9	40		
Total of Crater ..																									
Section Maalla including Railway	1,917	12,345	8,183	20,428	675	315	9,370	5,870	213	80	72	34	61	24	2	..	5	..	1,944	1,359	8	1	
Maalla, houseless	Houseless	544	22	566	540	22	3	..	15	6	3	..	5	3	
Barrier-Gate, houseless	Houseless	12	..	12	12	
Redjuff including Tawahl and Steamer Pier	591	4,109	2,425	6,534	118	37	3,570	1,894	4	..	149	52	234	138	89	70	15	1	..	3	
Redjuff, houseless	Houseless	314	..	314	314	
Tawahl, houseless	Houseless	1,431	2	1,433	1,431	2	
Tawahl Pier, houseless	Houseless	19	..	19	19	
Port Land Block	35	95	14	109	81	10	11	4	
Port Aden ..	11	3,552	69	3,621	10	..	3,275	8	1	..	181	38	1	..	30	19	12	1	41	3	
Total Civil Limits Aden Fortress ..																									
Sh. Othman including Railway	2,543	5,468	4,457	9,925	51	19	5,199	4,241	9	1	34	7	1	..	191	169	7	
Sh. Othman, houseless	Houseless	459	27	513	456	27	
Inad, Hawa and Little Aden	203	450	412	871	459	412	
Total Civil Limits, Aden Settlement ..																									
	5,328	26,431	16,454	44,335	774	375	24,398	13,366	226	81	225	86	532	217	2	..	10	..	2,263	2,120	31	2	41	7	

[illegible]

31068

IMPERIAL TABLE I.

HOUSES AND POPULATION.

District Aden.

Area 80 square miles.

Divisions of Aden.					Occupied houses.	POPULATION.		
						Persons Total.	Males.	Females.
Crater	(a) Civil Limits	1,917	20,428	12,245	8,183
	(b) Cantonment Limits*	466	2,864	2,216	648
Steamer Point including Tawahi and Hodjuff	(a) Civil Limits	591	8,030	5,903	2,127
	(b) Cantonment Limits†	373	1,983	1,547	436
Maalla	255	3,211	2,059	1,152
Sheikh Othman	2,436	11,319	6,447	4,872
Perim	306	2,075	1,676	399
The rest	(a) Civil Limits	136	1,943	1,823	120
	(b) Cantonment Limits	361	4,647	4,478	169
TOTAL ..					6,541	56,500	33,394	13,106

Civil Population.

	Occupied houses.	Males.	Females.	Total.
*Includes—	127	270	222	532
† Do.	8	117	1	118

VARIATION IN POPULATION SINCE 1872.

District or State.	PERSONS.						Variation increase (+) decrease (-).					Net variation in period 1872 to 1921 increase (+) decrease (-).
	1921	1911	1901	1891	1881	1872	1911 to 1921.	1901 to 1911.	1891 to 1901.	1881 to 1891.	1872 to 1881.	
1	2	3	4	5	6	7	8	9	10	11	12	13
Aden	56,500	46,165	43,974	44,079	34,860	19,288	+10,335	+2,191	-105	+9,219	+15,371	+37,211

District or State.	MALES.						FEMALES.					
	1921	1911	1901	1891	1881	1872	1921	1911	1901	1891	1881	1872
1	14	15	16	17	18	19	20	21	22	23	24	25
Aden	38,394	31,200	30,530	30,914	22,735	11,673	18,106	14,875	13,444	13,165	12,125	7,616

TABLE VI.

RELIGION.

District or State.	POPULATION.			HINDU.			MUSSALMAN.			CHRISTIAN.			BUDDHIST.		
	Per-sons.	Males.	Fe-males.	Per-sons.	Males.	Fe-males.	Per-sons.	Males.	Fe-males.	Per-sons.	Males.	Fe-males.	Per-sons.	Males.	Fe-males.
	1	2	3	4	5	6	7	8	9	10	11	12	13	14	15
Aden	56,500	38,394	18,106	3,691	3,261	430	45,055	30,067	14,988	2,297	1,915	382	72	70	2

District or State.	JAIN.			SIKH.			PARSI.			JEW.			ANIMIST.			INDEFINITE BELIEFS.		
	Per-sons.	Males.	Fe-males.	Per-sons.	Males.	Fe-males.	Per-sons.	Males.	Fe-males.	Per-sons.	Males.	Fe-males.	Per-sons.	Males.	Fe-males.	Per-sons.	Males.	Fe-males.
	16	17	18	19	20	21	22	23	24	25	26	27	28	29	30	31	32	33
Aden	308	227	81	292	289	3	321	237	86	4,408	2,281	2,127	2	2	..	52	45	7

TABLE VII.
AGE, SEX AND CIVIL CONDITION.

A.—All Religions.

Age.	POPULATION.			UNMARRIED.			MARRIED.			WIDOWED.			
	Persons.	Males.	Females.	Persons.	Males.	Females.	Persons.	Males.	Females.	Persons.	Males.	Females.	
	1	2	3	4	5	6	7	8	9	10	11	12	13
0-1	829	450	379	829	450	379
1-2	447	231	216	447	221	226
2-3	868	459	409	867	439	428	1	..	1
3-4	796	431	365	794	420	365	2	2
4-5	729	373	356	722	370	352	7	3	4
5-10	4,608	2,689	1,919	4,587	2,560	2,027	21	9	12
10-15	5,520	3,731	1,789	5,383	3,686	1,697	131	43	88	6	2	4	..
15-20	5,861	4,010	1,851	4,486	3,527	959	1,320	465	565	55	18	37	..
20-25	8,374	6,677	1,697	4,886	4,398	488	3,739	2,138	1,601	349	141	108	..
25-30	8,329	6,047	2,282	2,657	2,394	263	5,273	3,421	1,852	399	232	167	..
30-35	6,801	4,834	1,967	1,148	1,008	145	4,933	3,306	1,537	520	235	285	..
35-40	4,412	3,249	1,163	471	400	71	3,546	2,705	841	395	144	251	..
40-45	3,647	2,548	1,099	329	266	63	2,741	2,145	596	477	147	440	..
45-50	1,659	1,118	541	135	98	37	1,176	950	230	348	70	278	..
50-55	1,643	999	644	100	68	32	1,014	847	167	529	84	445	..
55-60	409	246	163	20	13	7	243	201	42	146	32	114	..
60-65	751	384	367	50	33	15	358	299	57	345	50	295	..
65-70	142	76	66	7	5	2	68	55	13	67	16	51	..
70 and over	351	165	186	19	13	6	124	119	15	198	36	162	..
Age unspecified	24	24	..	24	24
TOTAL	56,500	38,394	18,106	27,961	20,399	7,562	24,705	16,798	7,907	3,834	1,197	2,637	..

B.—Hindu.

0-1	47	27	20	47	27	20
1-2	14	5	9	14	5	9
2-3	31	12	19	31	12	19
3-4	32	15	17	32	15	17
4-5	27	13	14	27	13	14
5-10	133	78	55	132	77	55	1	1
10-15	116	75	41	108	74	34	8	1	7
15-20	194	149	45	166	101	5	82	44	38	6	1
20-25	1,148	1,084	64	552	550	2	827	469	358	67	65
25-30	1,615	962	653	343	341	2	573	525	48	99	96
30-35	456	427	29	103	102	..	298	272	26	56	53
35-40	320	197	123	30	30	..	169	149	20	21	18
40-45	138	119	19	10	10	..	113	98	15	15	8
45-50	62	48	14	3	3	..	37	37	..	13	6
50-55	38	30	8	2	2	..	29	26	3	7	2
55-60	11	11	..	2	2	..	6	6	..	3	3
60-65	14	10	4	8	8	..	6	2
65-70	3	3	2	2	..	1	1
70 and over	3	1	2	1	1	2
TOTAL	3,691	3,261	430	1,542	1,385	177	1,853	1,638	215	290	254	25	..

C.—Zoroastrian.

0-1	7	6	1	7	6	1
1-2	2	..	2	2	..	2
2-3	4	2	1	4	3	1
3-4	3	1	2	3	1	2
4-5	4	2	2	4	2	2
5-10	13	4	9	12	3	9	1	1
10-15	21	7	14	21	7	14
15-20	20	12	8	18	11	7	2	1	1
20-25	44	34	10	37	33	4	7	1	6
25-30	46	36	10	34	31	3	12	5	7
30-35	41	29	12	14	13	1	27	16	11
35-40	31	23	8	5	5	..	25	18	7	1
40-45	29	26	3	5	5	..	23	20	3	1	1
45-50	22	20	2	19	17	2	3	3
50-55	17	15	2	3	1	1	14	13	1	1	1
55-60	9	9	9	9
60-65	2	2	3	3
65-70	5	5	4	4
70 and over	2	1	1	1	..	1	1
TOTAL	323	297	86	168	121	47	147	109	38	8	7	1	..

D.—Musalman.

Age.	POPULATION.			UNMARRIED.			MARRIED.			WIDOWED.		
	Persons.	Males.	Females.	Persons.	Males.	Females.	Persons.	Males.	Females.	Persons.	Males.	Females.
1	2	3	4	5	6	7	8	9	10	11	12	13
0-1	561	294	267	561	294	267
1-2	347	175	172	347	175	172
2-3	683	340	343	683	340	343
3-4	625	348	277	623	346	277
4-5	588	290	278	561	287	274	2	2
5-10	3,733	2,102	1,631	3,716	2,095	1,621	7	3	4
10-15	4,761	3,317	1,434	4,630	3,276	1,354	115	39	76	6
15-20	4,997	3,443	1,554	3,831	3,047	784	1,123	387	735	44	9	35
20-25	6,277	4,120	1,857	3,245	2,833	413	2,857	1,515	1,312	174	72	102
25-30	6,422	4,471	1,951	1,944	1,719	225	4,189	2,623	1,566	289	130	159
30-35	5,333	3,634	1,649	565	740	125	3,995	2,730	1,265	423	164	259
35-40	3,556	2,671	985	363	500	62	2,959	2,261	698	335	110	225
40-45	3,030	2,161	929	264	216	48	2,354	1,768	586	512	117	395
45-50	1,374	915	459	107	80	27	962	779	183	305	56	249
50-55	1,262	808	554	83	57	26	605	676	129	474	75	399
55-60	340	196	144	16	11	5	194	180	34	130	25	105
60-65	634	319	303	39	31	8	294	247	47	391	41	250
65-70	103	55	48	7	5	2	45	37	8	51	13	38
70 and over	295	144	151	15	11	5	115	101	14	164	32	132
Age unspecified	24	24	..	24	24
TOTAL	45,655	30,667	14,988	21,925	15,886	6,039	19,932	13,335	6,597	3,196	846	2,353

E.—Christian.

0-1	30	19	11	30	19	11
1-2	13	7	6	13	7	6
2-3	31	20	11	31	20	11
3-4	19	14	5	19	14	5
4-5	21	13	8	21	13	8
5-10	92	41	51	91	41	50	1	..	1
10-15	53	29	29	58	29	29
15-20	138	118	18	132	118	14	4	..	4
20-25	832	793	39	769	761	8	62	32	30	1	..	1
25-30	339	273	66	301	189	112	137	80	54	1	1	..
30-35	286	206	80	105	101	3	155	103	52	7	1	5
35-40	189	150	33	52	46	6	129	103	26	8	2	1
40-45	114	95	19	34	19	5	88	74	14	2	2	..
45-50	97	71	18	17	11	6	68	59	9	2	1	1
50-55	41	39	2	5	4	1	33	31	..	3	..	1
55-60	13	10	3	1	..	1	11	10	1	1	..	1
60-65	13	9	4	5	2	3	7	7	..	1	..	1
65-70	3	2	1	2	2	..	1	..	1
70 and over
TOTAL	2,397	1,915	382	1,573	1,394	179	697	506	191	27	15	12

F.—Animist.

0-1
1-2
2-3
3-4
4-5
5-10
10-15
15-20
20-25
25-30
30-35	2	2	2	2	..
35-40
40-45
45-50
50-55
55-60
60-65
65-70
70 and over
TOTAL	2	2	2	2	..

G.—Sikh.

0-1
1-2
2-3
3-4
4-5
5-10
10-15	1	2	1	1	2
15-20	40	40	..	33	33	..	7	7
20-25	111	111	..	77	77	..	32	32	..	2	2	..
25-30	73	71	1	46	46	..	24	23	1	2	1	..
30-35	35	34	1	14	14	..	20	19
35-40	20	20	..	7	7	..	12	12
40-45	8	8	8	8
45-50	1	1	1	1
50-55	2	2	..	1	1	..	1	1
55-60
60-65
65-70
70 and over
TOTAL	292	289	3	181	180	1	106	104	2	5	5	..

TABLE VII—concl.

H.—Jew.

Age.	POPULATION.			UNMARRIED.			MARRIED.			WIDOWED.		
	Persons.	Males.	Females.	Persons.	Males.	Females.	Persons.	Males.	Females.	Persons.	Males.	Females.
1	2	3	4	5	6	7	8	9	10	11	12	13
0-1	174	100	74	174	100	74
1-2	64	31	33	64	31	33
2-3	114	62	52	114	62	52
3-4	111	49	62	111	49	62
4-5	104	53	51	104	53	51
5-10	613	333	280	612	333	279	1	..	1
10-15	548	290	258	541	277	264	7	3	4
15-20	423	217	212	380	183	147	89	24	65	4	4	..
20-25	385	174	211	161	100	61	219	72	147	5	2	3
25-30	347	160	187	57	37	20	264	121	160	9	2	4
30-35	462	250	212	40	24	16	393	215	178	29	11	16
35-40	286	155	131	13	10	3	324	137	87	29	8	21
40-45	301	177	124	17	7	10	240	163	77	44	7	37
45-50	109	54	55	7	3	4	80	49	31	22	2	20
50-55	179	101	78	7	3	4	123	94	34	44	4	40
55-60	33	17	16	1	..	1	21	14	7	11	3	8
60-65	96	42	54	8	2	4	43	33	10	47	1	49
65-70	28	11	17	15	10	5	12	7	12
70 and over	51	21	30	2	1	1	18	17	1	31	3	29
TOTAL	4,408	2,281	2,127	2,331	1,275	1,056	1,752	952	810	285	54	331

I.—Buddhist.

0-1
1-2
2-3	1	1	..	1	1
3-4
4-5
5-10
10-15
15-20	1	1	..	1	1
20-25	11	11	..	8	8	..	3	5
25-30	23	22	1	13	13	..	10	10	1
30-35	17	16	1	5	5	..	12	14	1
35-40	6	6	..	2	2	..	4	4
40-45	13	13	..	6	6	..	7	7
45-50
50-55
55-60
60-65
65-70
70 and over
TOTAL	72	70	2	36	36	..	36	24	2

J.—Jain.

0-1	10	4	6	10	4	6
1-2	6	3	3	6	3	3
2-3	4	1	3	3	1	1	1
3-4	6	4	2	6	4	2	1
4-5	4	2	2	4	2	2
5-10	21	10	11	21	10	11
10-15	23	20	3	22	20	2	1
15-20	42	28	14	27	25	10	14	2	12	1	1	..
20-25	57	40	17	26	28	..	23	12	17
25-30	53	42	11	14	14	..	38	27	11	1	1	..
30-35	33	30	3	4	4	..	38	25	11	1	1	..
35-40	21	19	2	..	1	..	30	18	3	1	1	..
40-45	14	12	2	3	3	..	8	7	1	1	2	..
45-50	9	7	2	1	1	..	5	4	1	3	2	1
50-55	3	2	3	3
55-60	2	1	1	..	1	1	..
60-65
65-70
70 and over
TOTAL	308	227	81	149	119	30	148	99	49	11	9	2

K.—Indefinite Beliefs.

0-1
1-2	1	..	1	1	..	1
2-3
3-4
4-5
5-10	2	1	1	2	1	1
10-15	1	1	..	1	1
15-20	8	8	..	8	8
20-25	11	10	1	8	8	..	3	2	1
25-30	12	10	2	5	5	..	6	5	1	1	..	1
30-35	6	6	5	5	..	1	1	..
35-40	3	2	1	3	2
40-45
45-50	4	4	4	4
50-55	1	1	1	1
55-60	1	1	1	1
60-65	1	1	1	1
65-70
70 and over
TOTAL	53	45	7	26	23	3	24	21	3	2	1	1

TABLE VIII.

NOTE.—Details of Literacy among Christians are given below.

Specification.	POPULATION.									LITERATE IN ENGLISH.		
	TOTAL.			LITERATE.			ILLITERATE.					
	Persons.	Males.	Females.	Persons.	Males.	Females.	Persons.	Males.	Females.	Persons.	Males.	Females.
1. TOTAL INDIAN CHRISTIAN ..	297	235	62	205	165	40	92	70	22	159	118	32
1. Protestants ..	1	1	..	1	1	} Details not abstracted.		
2. Roman Catholic ..	269	211	58	182	144	38	87	67	20			
3. Syrians			
4. Sect not returned ..	12	8	4	7	5	2	5	3	2			
5. Anglican Communion ..	8	5	..	8	8			
6. Baptist ..	1	1	..	1	1			
7. Methodist ..	4	4	..	4	4			
8. Presbyterians ..	2	2	..	2	2			
2. OTHER CHRISTIANS ..	2,000	1,680	320	1,797	1,556	241	263	124	79	1,690	1,463	227

TABLE VIII—*contd.*
EDUCATION BY RELIGION AND AGE.

All Religions.

Age.	POPULATION.									LITERATE IN ENGLISH.		
	TOTAL.			LITERATE.			ILLITERATE.			Persons.	Males.	Females.
	Persons.	Males.	Females.	Persons.	Males.	Females.	Persons.	Males.	Females.			
1	2	3	4	5	6	7	8	9	10	11	12	13
0—10 ..	8,277	4,423	3,794	237	164	73	8,040	4,319	3,721	90	45	45
10—15 ..	5,520	3,731	1,789	511	529	82	4,909	3,202	1,707	119	83	36
15—20 ..	5,861	4,010	1,851	1,031	947	84	4,830	3,063	1,767	311	276	35
20 and over ..	36,842	26,170	10,672	8,605	8,209	396	28,237	17,961	10,276	2,661	2,441	220
TOTAL ..	56,500	33,324	18,106	10,484	9,849	635	46,016	28,545	17,471	3,181	2,845	336

Hindu.

0—10 ..	284	150	134	25	18	7	259	132	127	1	1	0
10—15 ..	116	73	41	50	38	12	66	37	29	6	6	0
15—20 ..	194	140	45	88	75	13	106	74	32	9	8	1
20 and over ..	3,097	2,587	210	1,808	1,760	39	9	1,118	171	180	179	1
TOTAL ..	3,591	3,261	430	1,971	1,900	71	1,720	1,381	359	196	194	2

Zoroastrian.

0—10 ..	33	16	17	10	3	7	23	13	10	0	0	..
10—15 ..	21	7	14	18	6	12	3	1	2	3	2	1
15—20 ..	20	12	8	17	10	7	3	2	1	9	6	3
20 and over ..	249	202	47	248	202	46	1	..	1	188	172	16
TOTAL ..	323	257	66	293	221	72	30	16	14	200	180	20

Musalman.

0—10 ..	6,517	3,519	2,968	73	57	6	6,444	3,482	2,962	2	2	..
10—15 ..	4,751	3,317	1,434	354	339	15	4,397	2,978	1,419	27	23	2
15—20 ..	4,997	3,443	1,554	581	509	12	4,416	2,874	1,542	93	93	..
20 and over ..	28,790	19,758	9,032	2,891	2,642	49	25,099	16,116	8,983	525	523	2
TOTAL ..	45,055	30,067	14,988	4,639	4,617	82	40,356	25,450	14,906	647	643	4

Christian.

0—10 ..	206	114	92	74	38	36	132	76	56	71	36	35
10—15 ..	59	30	29	50	24	26	9	6	3	47	22	25
15—20 ..	139	121	18	120	116	14	9	5	4	126	112	14
20 and over ..	1,893	1,930	243	1,748	1,543	205	145	107	38	1,596	1,411	185
TOTAL ..	2,297	1,915	352	2,002	1,721	281	295	194	101	1,840	1,581	259

Animist.

Age.	POPULATION.									LITERATE IN ENGLISH.		
	TOTAL.			LITERATE.			ILLITERATE.			Persons.	Male.	Females.
	Persons.	Males.	Females.	Persons.	Males.	Females.	Persons.	Males.	Females.			
1	2	3	4	5	6	7	8	9	10	11	12	13
0—10
10—15
15—20
20 and over	..	2	2	2	2	2	2	..
TOTAL	..	2	2	2	2	2	2	..

Sikh.

0—10	..	1	..	1	1	..	1
10—15	..	2	2	..	2	2	1	1	..
15—20	..	40	40	..	18	18	..	22	22	1	1	..
20 and over	..	269	247	2	185	183	2	84	61	24	23	1
TOTAL	..	292	289	3	206	203	3	96	85	26	25	1

Jew.

0—10	..	1,180	628	552	49	35	14	1,131	593	538	14	6	8
10—15	..	548	280	268	119	102	17	429	178	251	35	27	8
15—20	..	423	211	212	153	128	25	270	93	187	70	53	17
20 and over	..	2,257	1,162	1,095	677	634	43	1,580	528	1,052	108	92	14
TOTAL	..	4,408	2,281	2,127	998	899	99	3,410	1,382	2,028	225	178	47

Buddhist.

0—10	..	1	1	1	1
10—15
15—20	..	1	1	..	1	1	1	1	..
20 and over	..	70	68	2	57	56	1	13	12	1	17	17	..
TOTAL	..	72	70	2	58	57	1	14	13	1	18	18	..

Jain.

0—10	..	51	24	27	3	3	..	48	21	27
10—15	..	23	20	3	18	18	..	5	2	3
15—20	..	42	28	14	39	26	13	3	2	1	2	2	..
20 and over	..	192	155	37	157	148	9	35	7	28	19	19	..
TOTAL	..	308	227	81	217	195	22	91	32	59	21	21	..

Indefinite Beliefs.

0—10	..	4	1	3	2	..	2	2	1	1	2	..	2
10—15
15—20	..	5	5	..	4	4	..	1	1
20 and over	..	43	39	4	32	30	2	11	9	2	4	3	1
TOTAL	..	52	45	7	38	34	4	14	11	3	6	3	3

RELIGIONS.

Religions.

ASIATIC LANGUAGES.						EUROPEAN AND AFRICAN LANGUAGES.											
ARABIC.			OTHER ASIATIC LANGUAGES.			ENGLISH.			OTHER EUROPEAN LANGUAGES.			SONALI.			OTHER AFRICAN LANGUAGES.		
Persons.	Males.	Females	Persons.	Males.	Females	Persons.	Males.	Females.	Persons.	Males.	Females	Persons.	Males.	Females.	Persons.	Males.	Females.
20	21	22	23	24	25	26	27	28	29	30	31	32	33	34	35	36	37
32,638	22,185	10,453	3,537	1,984	1,553	1,850	1,540	310	335	562	73	6,047	3,790	2,257	540	191	340
Hindu.																	
5	2	3	1	1
Musalman.																	
52,064	21,840	10,224	41	24	7	6	1	5	8,041	3,787	2,254	536	189	347
Jain.																	
..
Zoroastrian.																	
..
Christian.																	
6	6	..	12	8	4	1,832	1,528	304	224	180	35	6	3	3	4	2	2
Animist.																	
..	2	2
Sikh.																	
..
Jew.																	
563	237	226	3,724	1,883	1,841	11	8	3	54	25	29
Buddhist.																	
..	80	50	1	4	4
Indefinite Beliefs.																	
..	6	5	3	45	41	4

TABLE XII.

INFIRMITIES.

Part I.—Distribution by Age.

Age, 1	Population.			Insane.			Deaf-Mute.			Blind.			Lepers.		
	Persons.	Males.	Females.	Persons.	Males.	Females.	Persons.	Males.	Females.	Persons.	Males.	Females.	Persons.	Males.	Females.
1	2	3	4	5	6	7	8	9	10	11	12	13	14	15	16
0—1
1—2
2—3
3—4
4—5
5—10	..	3	3	1	1	..	2	2
10—15	..	5	5	3	3	..	2	2
15—20	..	6	4	2	2	1	3	3	1	..	1
20—25	..	5	5	..	1	1	2	2	..	3	2
25—30	..	10	10	..	4	4	3	2	..	3	3	..	1	1	..
30—35	..	11	11	..	3	3	4	4	..	4	4
35—40	..	8	7	1	1	4	12	2	..	5	4	1
40—45	..	14	14	3	3	..	11	11
45—50	..	10	7	3	5	4	1	5	3	2
50—55	..	8	6	2	1	..	1	7	6	1
55—60	..	2	1	1	1	1	..	1	..	1
60—65	..	6	3	1	1	1	..	5	4	1
65—70
70 and over	..	6	4	2	3	1	1	4	3	1
	94	82	12	11	10	1	30	27	3	51	44	7	2	1	1

TABLE XIII.

CASTE, TRIBE, RACE OR NATIONALITY.

Hindu.

District.	Brahman.		Maratha.		Vanni Sorathia.		Vanni Others.		Other Hindus.		Mochi.	
	Males.	Females.	Males.	Females.	Males.	Females.	Males.	Females.	Males.	Females.	Males.	Females.
1	2	3	4	5	6	7	8	9	10	11	12	13
Aden	896	60	111	35	110	64	140	71	1,953	166	42	24

Musalman.

District.	Arab.		Bohra.		Indian.		Jaberti.		Julaha.		Khadem.		Khoja.		Kokani.	
	Males.	Fe-males.	Males.	Fe-males.	Males.	Fe-males.	Males.	Fe-males.	Males.	Fe-males.	Males.	Fe-males.	Males.	Fe-males.	Males.	Fe-males.
1	2	3	4	5	6	7	8	9	10	11	12	13	14	15	16	17
Aden ..	20,964	9,509	238	144	387	103	217	122	662	532	87	81	87	43	185	29

District.	Meman.		Pathan.		Punjabi.		Rajput.		Shaikh.		Somali.		Other Arabs.		Sayad.		Seedi.	
	Males.	Fe-males.	Males.	Fe-males.	Males.	Fe-males.	Males.	Fe-males.	Males.	Fe-males.	Males.	Fe-males.	Males.	Fe-males.	Males.	Fe-males.	Males.	Fe-males.
1	18	19	20	21	22	23	24	25	26	27	28	29	30	31	32	33	34	35
Aden ..	205	135	516	274	20	4	77	18	1,015	920	3,707	2,844	1,228	120	200	98	272	221

Jain.

District.	Vanni Total.		Vanni Shrimali.		Other Jain.	
	Males.	Females.	Males.	Females.	Males.	Females.
1	2	3	4	5	6	7
Aden ..	102	37	116	39	9	5

Zoroastrian.

District.	Zoroastrian.	
	Males.	Females.
1	2	3
Aden ..	237	86

TABLE XIII—*contd.*

Christian.

District.	European British subject.		Other European and allied races.		Armenian.		Indian Christian.		Anglo Indian.	
	Males.	Females.	Males.	Females.	Males.	Females.	Males.	Females.	Males.	Females.
1	2	3	4	5	6	7	8	9	10	11
Aden	1,362	198	262	94	2	4	235	62	54	24

Jew, Animist, Buddhist and Sikh.

District.	Jew.		Animist.		Buddhist.		Sikh.	
	Males.	Females.	Males.	Females.	Males.	Females.	Males.	Females.
1	2	3	4	5	6	7	8	9
Aden	2,281	2,127	2	..	70	2	289	3

Indefinite Beliefs.

District.	European British subjects.		Other European and allied races.	
	Males.	Females.	Males.	Females.
1	2	3	4	5
Aden	4	3	41	4

TERRITORIAL DISTRIBUTION OF THE CHRISTIAN POPULATION BY SECT AND RACE.

District.	All Denominations.										Anglican communion.							
	Total.			Distribution by race.						Total.			Distribution by race.					
				European and allied races.		Anglo-Indian.		Indian.					European and allied races.		Anglo-Indian.		Indian.	
	Persons.	Males.	Fe- males.	Males.	Fe- males.	Males.	Fe- males.	Males.	Fe- males.	Persons.	Males.	Fe- males.	Males.	Fe- males.	Males.	Fe- males.	Males.	Fe- males.
1	2	3	4	5	6	7	8	9	10	11	12	13	14	15	16	17	18	19
Aden ..	3,297	1,915	382	1,626	236	54	24	235	62	1,262	1,127	135	1,111	131	8	4	8	..

District.	Armenian.										Baptist.							
	Total.			Distribution by race.						Total.			Distribution by race.					
				European and allied races.		Anglo-Indian.		Indian.					European and allied races.		Anglo-Indian.		Indian.	
	Persons.	Males.	Females.	Males.	Females.	Males.	Females.	Males.	Females.	Persons.	Males.	Females.	Males.	Females.	Males.	Females.	Males.	Females.
1	20	21	22	23	24	25	26	27	28	29	30	31	32	33	34	35	36	37
Aden ..	4	..	4	..	4	4	4	..	2	..	1	..	1	..

District.	Congregationalist.										Lutheran.							
	Total.			Distribution by race.							Total.			Distribution by race.				
				European and allied races.		Anglo-Indian.		Indian.						European and allied races.		Anglo-Indian.		Indian.
	Persons.	Males.	Fe- males.	Males.	Fe- males.	Males.	Fe- males.	Males.	Fe- males.	Persons.	Males.	Fe- males.	Males.	Fe- males.	Males.	Fe- males.	Males.	Fe- males.
1	38	39	40	41	42	43	44	45	46	47	48	49	50	51	52	53	54	55
Aden	2	2	..	2	16	16	..	16

District.	Methodist.									Presbyterian.								
	Total.			Distribution by race.						Total.			Distribution by race.					
				European and allied races. *		Anglo-Indian.		Indian.					European and allied races.		Anglo-Indian.		Indian.	
	Persons.	Males.	Fe- males.	Males.	Fe- males.	Males.	Fe- males.	Males.	Fe- males.	Persons.	Males.	Fe- males.	Males.	Fe- males.	Males.	Fe- males.	Males.	Fe- males.
1	56	57	58	59	60	61	62	63	64	65	66	67	68	69	70	71	72	73
Aden ..	59	53	6	48.	6	1	..	4	..	27	26	1	34	1	2	..

TABLE XV—*contd.*

District.	Protestant (unsectarian or sect not specified).										Roman Catholic.								
	Total.			Distribution by race.						Total.			Distribution by race.						
				European and allied races.		Anglo-Indian.		Indian.					European and allied races.		Anglo-Indian.		Indian.		
	Persons.	Males.	Fe-males.	Males.	Fe-males.	Males.	Fe-males.	Males.	Fe-males.	Persons.	Males.	Fe-males.	Males.	Fe-males.	Males.	Fe-males.	Males.	Fe-males.	
I	74	75	76	77	78	79	80	81	82	83	84	85	86	87	88	89	90	91	
Aden	..	143	116	32	111	26	4	4	1	..	670	484	186	233	112	40	16	211	58

District.	Salvationist.									
	Total.			Distribution by race.						
				European and allied races.		Anglo-Indian.		Indian.		
	Persons.	Males.	Fe-males.	Males.	Fe-males.	Males.	Fe-males.	Males.	Fe-males.	
I	82	93	94	95	96	97	98	99	100	
Aden ..	1	1	..	1	

District.	Syrian unspecified.									
	Total.			Distribution by race.						
				European and allied races.		Anglo-Indian.		Indian.		
	Persons.	Males.	Fe-males.	Males.	Fe-males.	Males.	Fe-males.	Males.	Fe-males.	
I	101	102	103	104	105	106	107	108	109	
Aden ..	1	1	..	1	

District.	Sect not returned.									
	Total.			Distribution by race.						
				European and allied races.		Anglo-Indian.		Indian.		
	Persons.	Males.	Fe-males.	Males.	Fe-males.	Males.	Fe-males.	Males.	Fe-males.	
I	110	111	112	113	114	115	116	117	118	
Aden ..	93	75	18	67	14	8	4	

TABLE XVI.—LIST SHOWING THE AGE OF ARMENIANS.

District.	All ages.			15-30		30-40		50 and over.	
	Total.	Males.	Females.	Males.	Females.	Males.	Females.	Males.	Females.
	1	2	3	4	5	6	7	8	9
Aden	6	2	4	2	2	1	1

Note.—Table XVI (a) includes 45 males of Indefinite Beliefs and 7 females of Indefinite Beliefs.

EUROPEAN AND ALLIED RACES AND ANGLO-INDIANS BY RACE AND AGE.

(a) European and allied races (including Armenians).

District.	British Subjects.																			
	Total.			All ages.			0-10		10-16		16-18		18-30		30-40		40-50		50 and over.	
	Total.	Males.	Fe- males.	Total.	Males.	Fe- males.	Males.	Fe- males.	Males.	Fe- males.	Males.	Fe- males.	Males.	Fe- males.	Males.	Fe- males.	Males.	Fe- males.	Males.	Fe- males.
	1	2	3	4	5	6	7	8	9	10	11	12	13	14	15	16	17	18	19	20
Aden	1,974	1,671	303	1,567	1,366	201	54	46	9	4	29	3	1,000	70	196	51	61	20	17	7

District.	Others.																
	All ages.			0-10		10-16		16-18		18-30		30-40		40-50		50 and over.	
	Total.	Males.	Fe- males.	Males.	Fe- males.	Males.	Fe- males.	Males.	Fe- males.	Males.	Fe- males.	Males.	Fe- males.	Males.	Fe- males.	Males.	Fe- males.
	1	2	3	4	5	6	7	8	9	10	11	12	13	14	15	16	17
Aden	407	305	102	50	31	7	16	6	4	127	31	66	14	43	5	19	1

(b) Anglo-Indian.

District.	All Ages.			0-1		1-5		5-10		10-15		16-18		18-20		
	Total.	Males.	Females.	Males.	Females.	Males.	Females.	Males.	Females.	Males.	Females.	Males.	Females.	Males.	Females.	
	1	2	3	4	5	6	7	8	9	10	11	12	13	14	15	16
Aden	78	54	24	1	..	7	1	6	6	3	1	..	3	2	1	..

District.	15-20		20-30		30-40		40-50		50-60		60 and over.	
	Males.	Females.	Males.	Females.	Males.	Females.	Males.	Females.	Males.	Females.	Males.	Females.
	1	2	3	4	5	6	7	8	9	10	11	12
Aden	2	4	15	4	10	6	9	2	1

TABLE XVII.—OCCUPATION OR MEANS OF LIVELIHOOD—GENERAL TABLE.

Note:—The blank groups noted below have been omitted:—

Nos. 1, 2 (a) (b) (c), 3 to 6, 8 to 12, 15, 16, 18 to 22, 24, 25 (a) (b), 26 (a) (b), 27 (a) (b), 28, 30 to 32, 33 to 36, 37 (a) (b), 38 (a), 39, 42, 43, 47, 51, 52 to 54, 56 to 58, 60, 62, 64, 71, 74, 82, 85, 90, 96, 101, 102, Order No. 19, Group Nos. 104, 108, 112, 119, Order No. 28, Group No. 125, Order No. 30, Group Nos. 127, 131, 142, 144, 146, 148, 149, 151, 154, 156, Order No. 43, Group Nos. 158, 160, 164, 166, (a) (b), 175, 179, 183 & 189 (a).

Occupation.	Total workers and depend- ants.	ACTUAL WORKERS.				Depend- ants.	Occupation.	Total workers and depend- ants.	ACTUAL WORKERS.				Depend- ants.
		Total.		Partially agricul- turalists.					Total.		Partially agricul- turalists.		
		Males.	Females.	Males.	Females.				Males.	Females.	Males.	Females.	
TOTAL ALL CLASSES ..	56,500	30,802	1,862	23,836	ORDER 8.—WOOD ..	1,342	429	103	810
1 CLASS A.—PRODUCTION OF RAW MATERIALS ..	1,812	635	8	1,150	44. Carpenters, turners and joiners, etc. ..	1,163	412	2	749
SUB-CLASS I.—EXPLOITATION OF THE SURFACE OF THE EARTH ..	1,798	651	8	1,187	45. Basket makers and other industries of woody material in- cluding leaves ..	179	17	101	61
ORDER 1.—PASTURE AND AGRICULTURE ..	135	63	7	45	ORDER 9.—METALS ..	591	186	3	402
(a) Ordinary Cultivation ..	54	33	3	18	46. Forging and rolling of iron and other metals ..	23	9	14
Groups—							48. Others workers in iron makers of im- plements and tools, principally or ex- clusively of iron ..	267	86	2	179
2. Ordinary cultivators.	54	33	3	18	49. Workers in brass, copper and bell metal ..	88	26	1	61
(b) Growers of special pro- ducts and market gardening ..	71	26	1	44	50. Workers in other metals (tin, zinc, lead, quick-silver, etc.) ..	213	65	148
7. Fruit, flower, vege- table, betel-vine, pepper, spices, areca nut, etc., growers ..	71	26	1	44	ORDER 10.—CERAMICS ..	13	3	4	8
(d) Raising of farm stock ..	10	4	3	3	53. Potters and earthen pipe and bowl makers ..	15	3	4	8
14. Herdsmen, shep- herds, goatherds, etc. ..	10	4	3	3	ORDER 11.—CHEMICAL PRO- DUCTS PROPERLY SO- CALLED, AND ANALO- GOUS ..	145	78	67
ORDER 2.—FISHING AND HUNTING— ..	1,661	588	1	1,072	59. Manufacture of ae- rated and mineral waters and ice ..	1	1
17. Fishing ..	1,661	588	1	1,072	61. Manufacture and refining of vegetable oils ..	92	77	15
SUB-CLASS II.—EXTRACTION OF MINERALS ..	17	4	13	62. Manufacture and refining of mineral oils ..	52	52
ORDER 5.—SALT, ETC.— ..	17	4	13	ORDER 12.—FOOD INDUS- TRIES ..	1,475	465	140	861
23. Rock, sea and marsh salt ..	17	4	13	65. Rice pounders and huskers and flour grinders ..	126	20	60	46
CLASS B.—PREPARATION AND SUPPLY OF MATERIAL SUBSTANCES ..	20,183	11,123	873	14,187	66. Bakers and biscuit makers ..	389	132	87	170
SUB-CLASS III.—INDUSTRY ..	9,641	3,363	692	5,586	67. Grain parchers, etc. ..	37	10	27
ORDER 6.—TEXTILES— ..	1,004	270	296	429	68. Butchers ..	546	158	2	386
25. Cotton ginning, cleaning and press- ing—							69. Fish curers ..	2	2
Unspecified ..	3	2	1	70. Butter, cheese and ghee makers ..	4	1	3
26. Cotton spinning—							72. Sweetmeat makers, preparers of jam and condiments, etc. ..	9	8	1
Unspecified ..	20	10	17	3	73. Brewers and dis- tillers ..	30	15	15
27. Cotton sizing and weaving—							75. Manufactures of tobacco, opium and ganja ..	332	119	213
Unspecified ..	400	174	21	205	ORDER 13.—INDUSTRIES OF DRESS AND THE TOILET ..	1,374	503	115	756
29. Rope, twine and string making ..	402	44	223	130	76. Hat, cap and tur- ban makers ..	5	..	5
37. Dyeing, bleaching, printing, prepara- tion and sponging of textiles—							77. Tailors, milliners, dress makers, darn- ers and embroiders on linen ..	570	115	75	380
Others ..	128	46	82	78. Shoe, boot and sandal makers ..	168	67	101
38.—Market of lace, etc.—							79. Other industries pertaining to dress, gloves, socks, gal- ters, belts, buttons, umbrellas, canes, etc. ..	1	1
Occupations such as "Weaver" insufficiently de- scribed, indicating this order, but not assignable to any particular group ..	41	3	20	9							
ORDER 7.—HIDES, SKINS AND HARD MATERIALS FROM THE ANIMAL KINGDOM ..	73	4	1	68							
40. Makers of leather articles, such as trunks, water bags, saddlery or harness, etc., etc. ..	13	1	12							
41. Furriers and per- sons occupied with fashers, and brist- les; brush makers ..	60	3	1	56							

TABLE XVII—contd.

Occupation.	Total workers and depend- ants.	ACTUAL WORKERS.				Depend- ants.	Occupation.	Total workers and depend- ants.	ACTUAL WORKERS.				Depend- ants.
		Total.		Partially agricul- turalists.					Total.		Partially agricul- turalists.		
		Males.	Females.	Males.	Females.				Males.	Females.	Males.	Females.	
ORDER 13.—INDUSTRIES OF DRESS AND THE TOILET—contd.							ORDER 20.—TRANSPORT BY WATER—contd.						
80. Washing, cleaning and dyeing clothes (see Group 37) ..	373	195	27	131	107. Ship owners and their employees, ship brokers, ship's officers, engineers, mariners and fire- men ..	632	419	1	212
81. Barbers, hairdres- sers and wig makers ..	257	125	8	124	109. Labourers em- ployed on the con- struction and main- tenance of streams, rivers and canals ..	65	40	25
ORDER 14.—FURNITURE INDUSTRIES ..						25	ORDER 21.—TRANSPORT BY ROAD ..						1,562
83. Cabinet makers, carriage painters, etc.	51	26	25	111. Persons (other than labourers) em- ployed on the con- struction and main- tenance of roads and bridges ..	17	17
84. Upholsterers, tent makers, etc. ..	1	1	113. Owners, managers and employes (ex- cluding personal servants) connect- ed with mechan- ically driven vehicles (including trams) ..	635	281	354
ORDER 15.—BUILDING IN- DUSTRIES ..						474	ORDER 22.—TRANSPORT BY RAIL ..						110
86. Excavators, earth- workers and well- sinkers ..	3	1	2	114. Ditto connected with other vehicles ..	1,479	746	3	730
87. Stone cutters and dressers ..	16	13	3	115. Palki, etc., bearers and owners ..	5	4	1
88. Brick layers and masons ..	885	441	3	441	116. Bark elephant, camel, mule, ass and bullock owners and drivers ..	14	6	8
89. House builders, de- corators, painters, tilers, plumbers, etc. ..	47	19	28	117. Porters and mes- sengers ..	913	431	482
ORDER 16.—CONSTRUC- TION OF MEANS OF TRANSPORT ..						3	ORDER 23.—POST OFFICE, TELEGRAPH AND TELE- PHONE SERVICES ..						153
91. Carriage, cart, palki, etc., makers and wheelwrights ..	3	1	2	120. Employees (all grades) on Post Office, Telegraph and Telephone ser- vices ..	345	191	1	153
92. Ship, boat, aero- plane builders ..	1	1	SUB-CLASS V.—TRADE ..						5,738
ORDER 17.—PRODUCTION AND TRANSMISSION OF PHYSICAL FORCES (HEAT, LIGHT, ELECTRICITY, MOTIVE POWER, Etc.) ..						7	ORDER 24.—BANKS, ESTAB- LISHMENTS OF CREDIT, EXCHANGE AND INSUR- ANCE ..						169
93. Gas works and electric light ..	21	14	7	121. Bank Managers, money-lenders, ex- change and insur- ance agents, money changers and bro- kers and their em- ployees ..	236	67	169
ORDER 18.—OTHER MIS- CELLANEOUS AND UN- DEFINED INDUSTRIES ..						1,676	ORDER 25.—BROKERAGE, COMMISSION AND EX- PORT ..						853
94. Printers, litho- graphers, engravers, etc. ..	53	14	39	122. Brokers, commis- sion agents, commer- cial travellers, ware- house owners and their employees ..	1,216	347	16	853
95. Bookbinders and stitchers, envelope makers, etc. ..	2	2	ORDER 26.—TRADE IN TEXTILES ..						247
97. Makers of watches and clocks and op- tical, photographic, mathematical and surgical instruments ..	17	3	14	123. Trade in piece- goods, and textiles of wool, cotton, hair, silk and other fabrics ..	394	143	4	247
98. Workers in precious stones and metals, enamellers, imita- tion jewellery mak- ers, gilders, etc. ..	732	167	3	562							
100. Toy, kite, cage, fishing tackle, etc., makers, taxider- mists, etc. ..	55	15	40							
103. Sweepers, scaven- gers, etc. ..	1,735	699	15	1,021							
SUB-CLASS IV.—TRANSPORT ..						2,863							
ORDER 20.—TRANSPORT BY WATER ..						1,008							
105. Persons (other than labourers) em- ployed in harbour works and dock- yards including pilots ..	50	24	26							
106. Labourers in har- bour works and dockyards ..	1	1							

TABLE XVII—*contd.*

Occupations.	Total workers and depend- ants.	ACTUAL WORKERS				Depend- ants.	Occupations.	Total workers and depend- ants.	ACTUAL WORKERS.				Depend- ants.
		Total.		Partially agricul- turalists.					Total.		Partially agricul- turalists.		
		Males.	Females.	Males.	Females.				Males.	Females.	Males.	Females.	
ORDER 27.—TRADE IN SKINS, LEATHER AND FURS	351	90	1	200	ORDER 38.—TRADE IN FUEL	286	65	56	165
124. Trade in skins, leather furs, fea- thers, horn, etc. ..	351	90	1	260	147. Dealers in fire- wood, charcoal, coal, cowdung cakes, etc. ..	286	65	56	165
ORDER 29.—TRADE IN METALS	7	3	4	ORDER 39.—TRADE IN AR- TICLES OF LUXURY AND THOSE PERTAINING TO LETTERS AND THE ARTS AND SCIENCES ..	19	3	14
126. Trade in metals, machinery, knives, tools, etc. ..	7	3	4	150. Publishers, book- sellers, stationers, dealers in music, pictures, musical instruments and curiosities ..	19	3	14
ORDER 31.—TRADE IN CHEMICAL PRODUCTS ..	19	6	4	9	ORDER 40.—TRADE OF OTHER SORTS ..	2,489	753	8	1,728
128. Trade in chemi- cal products (drugs, dyes, paints, pet- roleum, explosives, etc.) ..	19	6	4	9	152. General store- keepers and shop- keepers otherwise unspecified ..	2,373	700	2	1,671
ORDER 32.—HOTELS, CAFES, RESTAURANTS, ETC.	1,064	449	7	608	153. Itinerant traders, pedlars, hawkers, etc. ..	116	53	6	57
129. Vendors of wine, liquors, aerated waters and ice ..	291	166	5	130	CLASS C.—PUBLIC ADMINIS- TRATION AND LIBERAL ARTS	10,660	7,393	121	3,146
130. Owners and man- agers of hotels, cook- shops, sarais, etc., and their employees.	773	283	2	488	SUB-CLASS VI.—PUBLIC FORCE	8,156	6,706	6	1,444
ORDER 33.—OTHER TRADE IN FOOD-STUFFS ..	2,630	922	79	1,629	ORDER 41.—ARMY ..	6,970	6,293	6	671
132. Grocers and sell- ers of vegetable oil, salt and other con- diments ..	822	297	1	524	155. Army (Imperial) ..	6,970	6,293	6	671
133. Sellers of milk, butter, ghee, poul- try, eggs, etc. ..	457	65	49	343	ORDER 42.—NAVY ..	28	28
134. Sellers of sweet- meats, sugar, gur and molasses ..	46	24	22	157. Navy ..	28	28
135. Cardamom, betel- leaf, vegetables, fruit and areca nut sellers ..	774	309	8	457	ORDER 44.—POLICE ..	1,158	385	773
136. Grain and pulse dealers ..	167	85	3	79	159. Police ..	1,158	385	773
137. Tobacco, opium, ganja, etc., sellers ..	330	113	18	199	SUB-CLASS VII.—PUBLIC AD- MINISTRATION ..	670	220	450
138. Dealers in sheep, goats and pigs ..	23	23	ORDER 45.—PUBLIC AD- MINISTRATION ..	670	220	450
139. Dealers in hay, grass and fodder ..	11	6	5	161. Service of the State (not assigned to any other speci- fic group) ..	435	137	298
ORDER 34.—TRADE IN CLOTHING AND TOILET ARTICLES	48	14	34	162. Service of Indian and Foreign States (not assigned to any other specific group) ..	2	2
140. Trade in ready- made clothing and other articles of dress and the toilet (hats, umbrellas, socks, ready-made shoes, perfumes, etc.) ..	48	14	34	163. Municipal and other Local (not Village) Servants (not assigned to any other specific group) ..	233	81	152
ORDER 35.—TRADE IN FURNITURE	2	1	1	SUB-CLASS VIII.—PROFES- SIONS AND LIBERAL ARTS ..	1,005	316	69	820
141. Trade in furni- ture, carpets, cur- tains, and bedding ..	2	1	1	ORDER 46.—RELIGION ..	226	60	2	164
ORDER 36.—TRADE IN BUILDING MATERIALS ..	15	9	6	165. Priests, ministers, etc. ..	162	46	116
143. Trade in building materials (stones, plaster, cement, sand, thatch, etc.) ..	15	9	6	167. Catechists, read- ers, Church and mission service ..	41	1	2	38
ORDER 37.—TRADE IN MEANS OF TRANSPORT ..	26	15	11	168. Temple, burial or burning ground service, pilgrim con- ductors, circum- cisers ..	23	13	10
146. Dealers and hirers of elephants, camels, horses, cattle, as- ses, mules, etc. ..	26	15	11	ORDER 47.—LAW ..	98	25	73
							169. Lawyers of all kinds including Kazis, law agents and mukhtyars ..	7	2	5

TABLE XVII—contd.

Occupation.	Total workers and depend- ants.	ACTUAL WORKERS.				Depend- ants.	Occupation.	Total workers and depend- ants.	ACTUAL WORKERS.				Depend- ants.
		Total.		Partially agricul- turists.					Total.		Partially agricul- turists.		
		Males.	Females.	Males.	Females.				Males.	Females.	Males.	Females.	
ORDER 47.—LAW— <i>contd.</i>							SUB-CLASS X.—DOMESTIC SERVICE	2,431	1,290	57	1,064
170. Lawyers' clerks, petition writers, etc. ..	91	23	68		ORDER 52.—DOMESTIC SER- VICE	2,431	1,290	57	1,064
ORDER 48.—MEDICINE ..	169	38	49	..	82		181. Cooks, water carriers, door- keepers, watch- men and other in- door servants ..	1,980	1,008	56	916
171. Medical practi- tioners of all kinds including dentists, oculists and veteri- nary surgeons ..	47	24	1	..	22		182. Private grooms, coachmen, dog boys, etc. ..	451	282	1	168
172. Midwives, vac- cinators, compound- ers, nurses, mas- seurs, etc. ..	122	14	48	..	60		SUB-CLASS XI.—INSUFFI- CIENTLY DESCRIBED OCCUPATIONS	15,053	10,066	745	4,242
ORDER 49.—INSTRUCTION ..	336	106	18	..	212		ORDER 53.—GENERAL TERMS WHICH DO NOT INDICATE A DEFINITE OCCUPATION	15,053	10,066	745	4,242
173. Professors and teachers of all kinds ..	331	105	16	..	210		184. Manufacturers, business men and contractors other- wise unspecified ..	196	29	167
174. Clerks and teach- ers connected with education ..	5	1	2	..	2		185. Cashiers, account- ants, book-keepers, clerks and other employees in un- specified offices, warehouses and shops ..	5,794	4,080	31	1,703
ORDER 50.—LETTERS AND ARTS AND SCIENCES ..	176	87	89		186. Mechanics other- wise unspecified ..	322	141	2	179
176. Architects, sur- veyors, engineers, and their employees ..	160	79	81		187. Labourers and workmen otherwise unspecified ..	8,741	5,836	712	2,193
177. Authors, editors, journalists, artists, photographers, sculp- tors, astronomers, meteorologists, bota- nists, astrologers, etc. ..	7	2	5		SUB-CLASS XII.—UNPRODUC- TIVE	360	275	58	27
178. Music composers and masters, play- ers on all kinds of musical instruments (not military), singers, actors, and dancers ..	9	6	3		ORDER 54.—INMATES OF JAILS, ASYLUMS, AND ALMS HOUSES ..	92	92
SUB-CLASS IX.—PERSONS LIVING PRINCIPALLY ON THEIR INCOME ..	829	151	46	..	632		188. Inmates of jails, asylums, and alms houses ..	92	92
ORDER 51.—PERSONS LIV- ING PRINCIPALLY ON THEIR INCOME ..	829	151	46	..	632		ORDER 55.—BEGGARS, VA- GRANTS, PROSTITUTES, ETC. ..	268	183	56	27
180. House rent recol- vers, receivers of stamp duty profits from Patilki and Kulkarni watans, proprietors (other than of agricultural land) fund and scholarship holders and pensioners ..	825	151	46	..	632		189. Beggars and vagrants ..	232	150	28	24
CLASS D.—MISCELLANEOUS ..	17,344	11,831	960	..	5,353		190. Procurers and pro- stitutes ..	20	..	20	3
							191. Other unclassi- fied unproductive occupations ..	7	3	4

TABLE
INDUSTRIAL STATISTICS—
Provincial

Description of Establishment.	Classification of Establishment according to the number of persons employed (including management).	Total Number of Establishments.	Total of persons employed.		Direction, Supervision and			
					Managers.		Supervising and Technical Staff.	
			Males.	Females.	Europeans and Anglo-Indians.	Indians.	Europeans and Anglo-Indians.	Indians.
1	2	3	4	5	6	7	8	9
FOOD INDUSTRIES	TOTAL	4	100	3	1	3
Tobacco Factory in which mechanical power is used	From 10 to 20 persons	1	13	1
Cigarette Factory	Total	3	87	2	1	3
In which mechanical power is used	From 10 to 20 persons	1	12	1
	From 20 to 50 persons	2	75	2	3
METAL INDUSTRIES.								
Work Shop	Total	5	545	4	1	4	2
In which mechanical power is used	From 50 to 100 persons	2	138	2	1	1
	From 100 to 200 persons	3	407	2	1	3	1
PRODUCTION AND TRANSMISSION OF PHYSICAL FORCES.								
Water and Ice Factory in which mechanical power is used	From 100 to 200 persons	1	102	1	2
INDUSTRIES CONNECTED WITH CHEMICAL PRODUCTS.								
Salt Work.								
In which mechanical power is used	From 400 and over	2	846	1	1	3	10
	Grand Total	12	1,593	9	3	12	12

INDUSTRIAL STATISTICS—
Distribution by

Description of Establishment.	District.	Total Number of Establishments.	Total of persons employed.		Direction, Supervision and			
					Managers.		Supervising and Technical staff.	
			Males.	Females.	Europeans and Anglo-Indians.	Indians.	Europeans and Anglo-Indians.	Indians.
1	2	3	4	5	6	7	8	9
FOOD INDUSTRIES	TOTAL	4	100	3	1	3
Tobacco Factory	Aden	1	13	1
Cigarette Factory	"	3	87	2	1	3
METAL INDUSTRIES.								
Work Shop	"	5	545	4	1	4	2
PRODUCTION AND TRANSMISSION OF PHYSICAL FORCES.								
Water and Ice Factory	"	1	102	1	2
INDUSTRIES CONNECTED WITH CHEMICAL PRODUCTS.								
Salt Work	"	2	846	1	1	3	10
	Grand Total	12	1,593	9	3	12	12

PART I.

Summary.

CLASSIFICATION OF PERSONS EMPLOYED.										Remarks.
Clerical Staff.		Skilled Workmen.				Unskilled Labourers.				
Clerical Staff.		Europeans and Anglo-Indians.		Indians.		Aged 14 and over.		Under 14.		
Europeans and Anglo-Indians.	Indians.	Males.	Females.	Males.	Females.	Males.	Females.	Males.	Females.	
10	11	12	13	14	15	16	17	18	19	20
2	3	26	47	15	
....	12*	*Non-Indian Asiatics—Jews 2, Arabs 10.
2	3	14	47	..	15	
..	2	9	
2	1	14†	38	..	15	†Non-Indian Asiatics—Jews 13, Arabs 1.
1	3	4	350	170	6	
..	3	3	55‡	98	5	‡Non-Indian Asiatics—Arabs 22.
1	1	295§	102	1	§Non-Indian Asiatics—Arabs 233.
....	99	
2	18	209	574	..	28	Non-British Europeans—Italians 18.
5	6	22	585	890	49	¶Non-Indian Asiatics—Arabs 191.

PART II.

Districts.

CLASSIFICATION OF PERSONS EMPLOYED.										Remarks.
Clerical Staff.		Skilled workmen.				Unskilled Labourers.				
Clerical staff.		Europeans and Anglo-Indians.		Indians.		Aged 14 and over.		Under 14.		
Europeans and Anglo-Indians.	Indians.	Males.	Females.	Males.	Females.	Males.	Females.	Males.	Females.	
10	11	12	13	14	15	16	17	18	19	20
2	3	26	47	15	
....	12*	*Non-Indian Arabs 10.
2	3	14†	47	15	†Non-Indian Arabs 1.
1	3	4	350‡	170	6	‡Non-Indian 260.
....	99	
2	18	209	574	28	Non-British 18.
5	6	22	585	890	49	..	¶Non-Indian 191.

Industrial Establishments classified according

Description of Establishment.	Total number.	NUMBER OWNED BY					
		Government or local authority.	Registered Companies with Directors who are			Private	
			Europeans or Anglo-Indians.	Indians.	Both.	Europeans or Anglo-Indians.	Hindu.
1	2	3	4	5	6	7	8
FOOD INDUSTRIES, TOTAL	4	..	3	1
Tobacco Factory	1	..	1
Cigarette Factory	3	..	2	1
METAL INDUSTRIES.							
Work Shop	5	2	2
PRODUCTION AND TRANSMISSION OF PHYSICAL FORCES.							
Water and Ice Factory	1	..	1
INDUSTRIES CONNECTED WITH CHEMICAL PRODUCTS.							
Salt Work	2	1	..
Grand Total	12	2	6	1	1

to the class of Owners and Managers.

persons who are			NUMBER MANAGED BY				
Musal-man.	Parsee.	Others.	Europeans or Anglo- Indians.	Hindu.	Musal- man.	Parsee.	Others.
9	10	11	12	13	14	15	16
....	3	1
....	1
....	2	1
....	1	4	1
....	1
1	1	1
1	1	9	1	1	1

Caste or Race and Birth-place of Skilled Workmen classified according to their

Description of Establishment and occupation.	NUMBER OF WORKMEN.				RELIGION, CASTE					
	Adults.		Children under 14.		Mussalmans and Sikhs.	Christians.	Jews.	Parsis.	Hindus	
	Males.	Females.	Males.	Females.					Brahmins and other Writing Castes.	Artisan Castes.
1	2	3	4	5	6	7	8	9	10	11
FOOD INDUSTRIES.										
TOBACCO FACTORY.										
Tobacco cutter	12	10	2
Cigarettes Factory
Tobacco Cutter	3	3
Cigarettes Maker	11	11
METAL INDUSTRIES.										
WORK SHOP.										
Blacksmith	6	2	1	3	..
Striker	2	2
Store keeper	1	1
Fitter	32	28	1	..	1	2	..
Fitter boy	4	2	6
Store boy	1	1
Carpenter	22	19
Carpenter boy	3	5	8
Mason	4	4
Mason boy	3	1	4
Foreman	6	3	2	1	..
Fireman	13	13
Moulder	4	4
Moulder boy	9	9
Boilermaker	24	24
Revetter	58	58
Holder up	8	8
Revet boy	6	12	19
Coppersmith	5	2	3	..
Sailmaker	2	2
Asst. Sailmaker	1	1
Oil engine driver	2	2
Greaser	1	1
Carriage and Waggon examiner	1	*(Sikh) 1
Wheeled Gauger	1	1
Wheeled Taper	1	1
Sign writer	1	1
Painter	2	2
Hammerman	10	10
Malstry	1	1
Crane driver	2	2
Pump driver	1	1
Engineer	1	1
Turner	3	2	1	..
Plumber	1	1
Tindal	25	25
Godown man	1	1
Godown boy	1	1
Succanee	6	2
Khalasi	8	6
Workman	7	7

Description of Establishment and occupation.	NUMBER OF WORKMEN.				RELIGION, CASTE					
	Adults.		Children under 14.		Musalmans and Sikhs.	Christians.	Jews.	Parsis.	Hindus	
	Males.	Females.	Males.	Females.					Brahmins and other Writing Castes.	Artisan Castes.
1	2	3	4	5	6	7	8	9	10	11
METAL INDUSTRIES—contd.										
WORK SHOP—contd.										
Driver	10	10
Clerk	1	1
Dhobi	10	8
Machine boy	1	1
Apprentice	1	1
Coolie	16	16
Penultima of Condenser	5	5
INDUSTRIES CONNECTED WITH CHEMICAL PRODUCTS.										
Salt Work.										
Head overseer	1	1
Engineer	4	3	1	..
Store keeper	2	2
Salt overseer	2	2
Overseer	1	1
Railway overseer	1	1
Mill overseer	3	3
Oilman	9	9
Turner	2	2
Electrical wireman	1	1
Motor car Driver	1	1
Camel Contractor	1	1
Fitter and Turner	1	1
Cook	2	2
Mill operative	6	6
Fitter	5	5
Carpenter	26	22	4
Hammerman	2	2
Blacksmith	2	2
Moulder	1	1
Engine driver	3	3
Brick layer	3	3
Saranj	1	1
Muccadam	43	43
Chowkidar	19	19
Manager	1	1
Cashier	1	*1
Electrician	9	8	1
Midshipman	2	2
Cutler	20	17	3
Worker in Salt	15	12	3
Machinist	14	14
Wind mill operator	18	18
Sinker	1	1
Mason	4	4
Grand Total	586	21	559	22	13	5	11	..

OF RACE.		Foreigners.	BORN.								
and Jains.			In the Province.			In other Provinces.					Not in India.
Marathas, Kunbis and other Cultivating Castes.	Kolis and other labouring Castes.		District of Enumeration.	Contiguous Districts.	Other Districts.	Baroda.	Mysore.	Hyderabad.	Central Provinces and Berar.	Rest of India.	
12	13	14	15	16	17	18	19	20	21	22	23
				10							
										1	
2			2	6						2	
				1							
			1								
			2	14							
				5							
										1	
										1	
										1	1
										2	
										1	
										1	
										3	
			1	6							2
			1							1	
										1	
				1							
			1								
										1	
											2
				5							1
			4	1							
			3	19							4
			1	1							
			1								1
				1							
			1							1	1
				3							
			1								
			1	41							1
			2	17							
											1
											1
				8							1
											2
				17							3
				12							3
				14							
				18							
				1							
				4							
3		3	130	342		1				96	39

Caste or Race and Birth-place of Unskilled Labourers classified according to the

Description of Establishment and occupation.	NUMBER OF LABOURERS.				RELIGION, CASTE					
	Adults.		Children under 14.		Musul- mans and Sikhs.	Chris- tians.	Jews.	Paras.	Hindus	
	Males	Females.	Males.	Females.					Brahmins and other Writing Castes.	Artisan Caste.
1	2	3	4	5	6	7	8	9	10	11
FOOD INDUSTRIES—										
Cigarettes Factory in which mechanical power is used	47	...	15	36	26
METAL INDUSTRIES—										
Work-shop in which mechanical power is used	179	..	6	174	1	1
PRODUCTION AND TRANSMISSION OF PHYSICAL FORCES—										
Water and Ice Factory	99	94	1	3	..
INDUSTRIES CONNECTED WITH CHEMICAL PRODUCTS—										
Salt Work in which Mechanical power is used	574	26	602
Grand Total ..	890	49	906	1	26	1	3	1

D9465
vol. 8

Industry in which they are working in Industries employing Mechanical Power.

OR RACE.			BORN.								
and Jains.		Foreign- ers.	In the Province.			In other Provinces					Net in India.
Marathas, Kunbis and other Cultivat- ing Castes. 1 st	Kolis and other La- bouring Castes. 1 st		District of Enu- meration. 15	Conti- guous Districts. 16	Other Districts. 17	Baroda. 18	Mysore. 19	Hyder- abad. 20	Central Provin- ces and Berar. 21	Rest of India. 22	
....	7	55
....	38	114	10	14
1	17	69	12	1
....	323	276	3
1	385	514	22	18

TABLE XXII—INDUSTRIAL STATISTICS—PART VI.

Details of Power employed.—Section 1.—For Establishments using steam, oil, gas, water, etc.

Description of Establishment.	Number of Establishments employing				Number of engines.				Total Horse-power.			
	Steam.	Oil.	Water.	Gas.	Steam.	Oil.	Water.	Gas.	Steam.	Oil.	Water.	Gas.
1	2	3	4	5	6	7	8	9	10	11	12	13
FOOD INDUSTRIES—												
Cigarette Factory	2	2	12
METAL INDUSTRIES—												
Work Shop	2	3	4	4	65	87
PRODUCTION AND TRANSMISSION OF PHYSICAL FORCES—												
Water and Ice Factory	1	3	70
INDUSTRIES CONNECTED WITH CHEMICAL PRODUCTS—												
Salt Work	1	1	3	4	235	195
GRAND TOTAL ..	4	6	10	10	370	294

*Details of Power employed.—Section 2.—For Establishments using Electric Power generated on the premises—Nil.**Details of Power employed.—Section 3.—For Electric Power supplied from outside—Nil.*

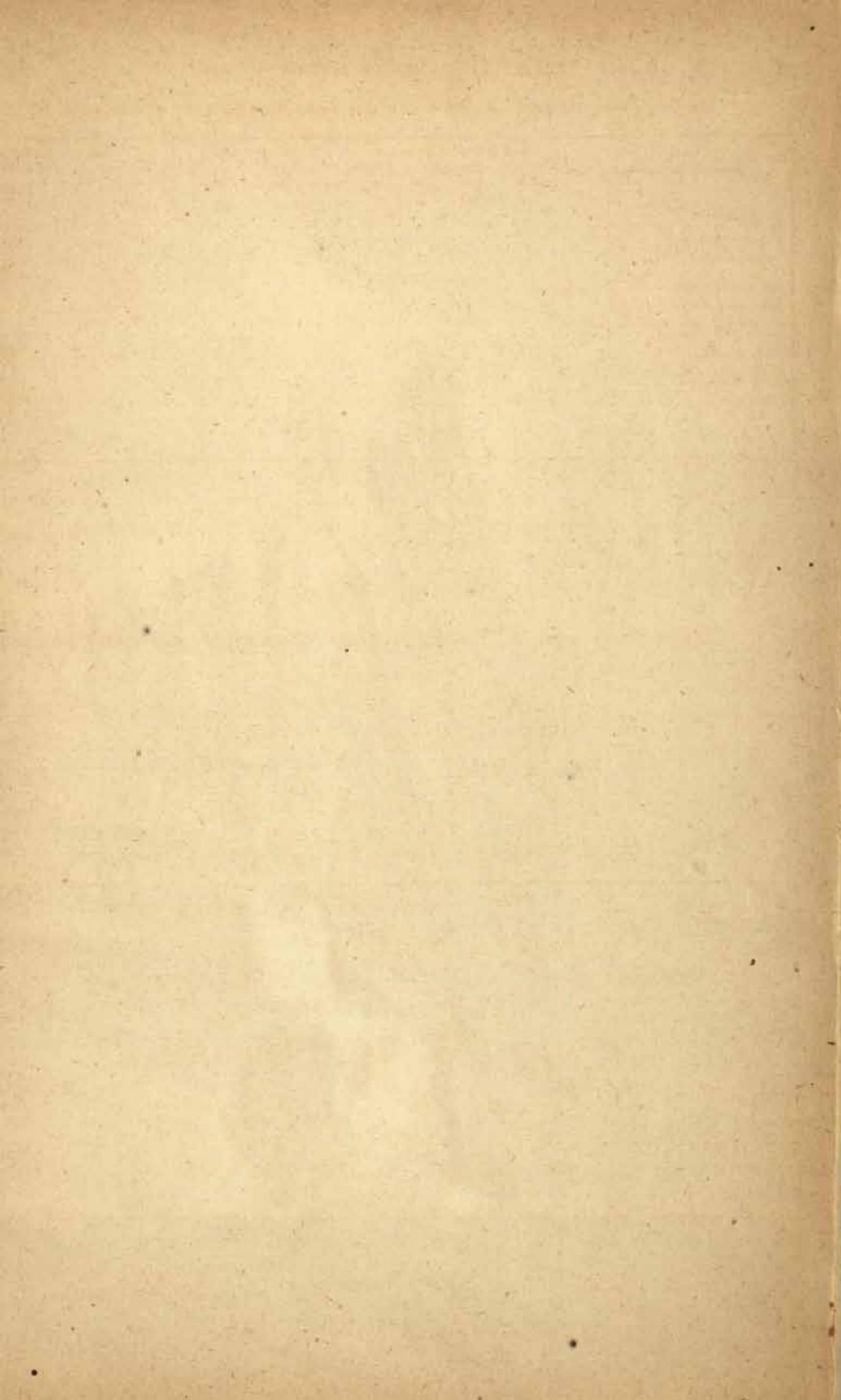
TABLE XXII—INDUSTRIAL STATISTICS—PART VII.

Number of looms in use in Textile Establishments—Nil.

PROVINCIAL TABLE I—AREA AND POPULATION OF THANA (TAHSILS, ETC.).

Thana (Tahalliship) Taluk or Town.	Area in square miles.	Number of Divisions or Aden.	Number of occupied houses.	Population.			1911 (both sexes).	Percentage of variation.		Number of per- sons per square mile in 1921.
				1921.				1911 to 1921.	1901 to 1911.	
				Persons.	Males.	Females.				
1	2	3	4	5	6	7	8	9	10	11
Aden		<div>Orater</div> <div> <div>(a) Civil Limits</div> <div>(b) Cantonment</div> </div> <div> <div>Steamer Point in- cluding Tawahl and Hedjuff.</div> <div> <div>(a) Civil Limits</div> <div>(b) Cantonment</div> </div> </div> <div>Maalla</div> <div>Sheikh Othman</div> <div>Perito</div> <div> <div>The rest</div> <div> <div>(a) Civil Limits</div> <div>(b) Cantonment</div> </div> </div>	<div>1,917</div> <div>466</div> <div>591</div> <div>875</div> <div>255</div> <div>2,456</div> <div>306</div> <div>136</div> <div>361</div>	56,500	28,304	18,196	48,163	+22	+5	706

E. M. DUGGAN,
Chairman, Aden Settlement,
in charge Census Operations, Aden.



Calder
8.5.79

M.C.

CATALOGUED.

"A book that is shut is but a block"

CENTRAL ARCHAEOLOGICAL LIBRARY
GOVT. OF INDIA
Department of Archaeology
NEW DELHI

Please help us to keep the book
and moving.

SOC